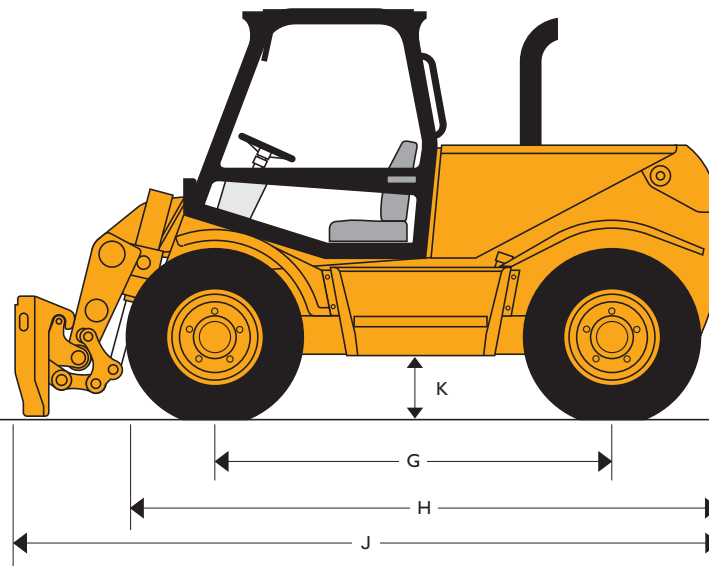
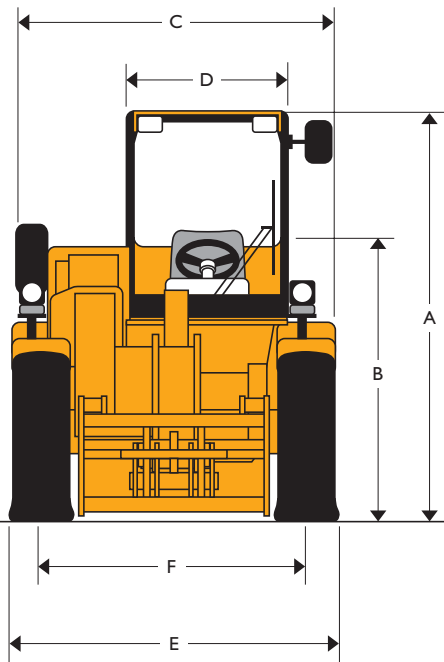




MAX. PAYLOAD: 2.5 tonnes (5510lb)
 MAX. LIFT HEIGHT: 5.0 metres (16ft-5in)
 MAX. HORSEPOWER: 57.5 kW (77hp)



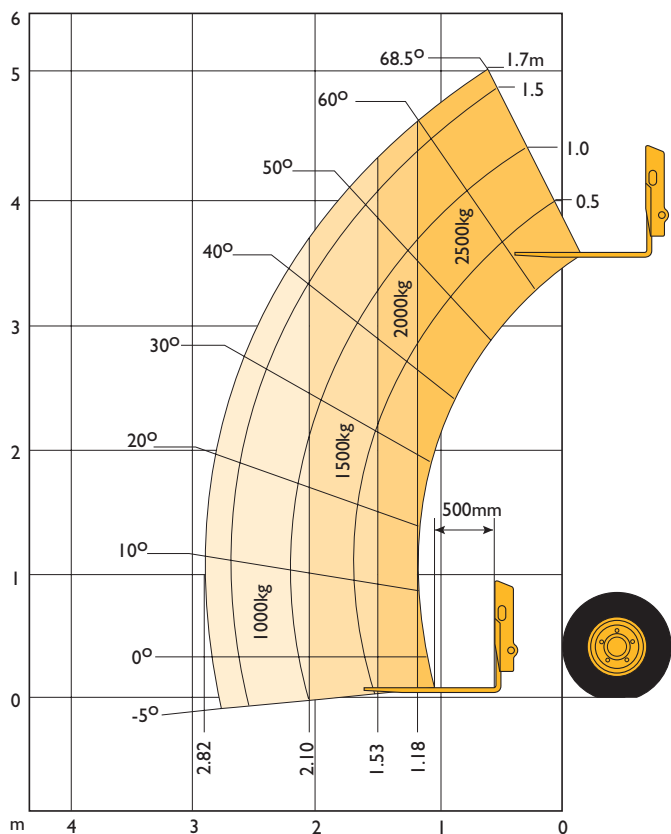
STATIC DIMENSIONS

Machine model	525-50
	m (ft-in)
A Overall height (std cab)	2.19 (7-2)
B Height to top of steering wheel	1.57 (5-2)
C Overall width	1.82 (6-0)
D Inside width of cab	0.83 (2-9)
E Width over tyres	1.82 (6-0)
F Front track	1.49 (4-11)
G Wheelbase	2.00 (6-7)
H Overall length to front tyres	3.13 (10-3)

Machine model	525-50
	m (ft-in)
J Overall length to front carriage	3.62 (11-10)
K Ground clearance	0.36 (1-2)
Outer turn radius over tyres	3.71 (12-1)
Obstruction/departure angle with/without quickhitch	degrees 30°/58°
Weight	kg (lb) 5400 (11002)
Power to weight ratio 57.5kW (77hp) Engine	9.8kW/tonne
Tyres	12.5 x 18 10pr



LIFT PERFORMANCE



LIFT PERFORMANCE

Machine Model	525-50	
Lift capacity to full height	kg (lb)	2500 (5510)
Lift capacity at full reach	kg (lb)	1000 (2204)
Lift height	m (ft-in)	5.00 (16-5)
Reach at max lift height	m (ft-in)	0.50 (1-8)
Maximum forward reach	m (ft-in)	2.82 (9-3)
Reach with 1 tonne load	m (ft-in)	2.82 (9-3)
Placing height	m (ft-in)	4.60 (15-1)

Complies with stability test EN 1459 Annex B.

LOADER PERFORMANCE

Machine Model	525-50	
	Standard GP bucket	
Bucket rated capacity	m ³ (yd ³)	0.90 (1.20)
Bucket struck capacity	m ³ (yd ³)	0.76 (1.02)
Breakout force	kgf (lbf)	2800 (6172)
Dump height (max)	m (ft-in)	4.46 (14-6)
Dump angle at max height	degrees	40°
Loadover height (max)	m (ft-in)	5.09 (16-8)
Rollback angle at ground	degrees	40°
Carriage rotation angle (total)	degrees	150°
Payload (max)	kg (lb)	1620 (3571)
Bucket width	m (ft-in)	1.95 (6-5)

ENGINE

Latest technology and advanced design provides low fuel consumption, reduced noise, high torque and power output, total reliability and minimal maintenance.

Easily replaceable pre-finished dry liners, five bearing, heat treated crankshaft. Expansion controlled pistons. Two-stage, dry type air filter with primary and safety elements.

Engine conforms with EC mobile off-highway emissions regulations (stage I).

Engine	525-50	
Displacement	ltr (in ³)	4.20 (256)
No. of cylinders		4
Bore size	mm (in)	103 (4.06)
Stroke	mm (in)	127 (5)
Aspiration		Naturally aspirated
Power rating @ 2000rpm		
Gross SAE J1349	kW (HP)	57.5 (77)
Torque rating @ 1200rpm		
SAE J1349	Nm (lbf ft)	290 (214)
Noise level directive 2000/14/EC	dBA	104



TRANSMISSION

JCB Syncro Shuttle transmission incorporating torque converter, reversing shuttle and all synchromesh 4-speed gearbox in one resiliently mounted unit.

Electro-hydraulic direction control through a steering column mounted switch for modulated forward/reverse shuttling.

Gear lever and loader control transmission disconnect switches for fast gearchanging.

Travel speed 30km/h (18mph).

Front and rear axles: Epicyclic hub reduction type with drop box on front axle. 4WS and permanent 4WD.

BRAKES

Service brakes: Hydraulically activated, power assisted multi disc type brakes. They are oil immersed for long life and fade free braking. Mounted within the planetary hub means that the brakes are direct acting to each wheel, greatly increasing deceleration and eliminating skid potential.

Parking brake: Is an electro/hydraulically operated oil immersed multi disc brake on the transmission output shaft and will hold the machine on 1 in 4 gradients.

BOOM AND CARRIAGE

Boom is manufactured from high tensile steel.

Low maintenance, hard wearing pads.

JCB tool carrier parallel lift carriage with pin locking accepts fork frame with integral pallet forks and a wide range of attachments.

SAFETY CHECK VALVES

Fitted to carriage tilt, telescopic and boom lift rams.

SERVICE CAPACITIES

Fuel tank	litres (UK gal)	90 (9.5)
Hydraulic tank	litres (UK gal)	70 (15.5)
Coolant	litres (UK gal)	20 (4.4)

HYDRAULICS

Single gear pump, with suction strainer and filter. One boom end auxiliary hydraulic service fitted as standard.

Operating system pressure	bar (psi)	241 (3500)
Flow at system pressure (@ 2200rpm)	ltr/min	65
Cycle times		seconds
Boom raise		7.4
Boom lower		5.3
Extend		5.7
Retract		3.2
Bucket dump		2.3
Bucket crowd		3.2

ELECTRICS

12 V negative earth. 92 AH heavy duty battery with isolator. 65 amp alternator. Full road lighting. Direction indicators. Hazard warning.

CAB

Quiet, safe and comfortable cab conforms to ROPS 86/295/EEC and FOPS 86/296/EEC Directives. Toughened glass all round. Tinted with laminated roof screen. Roof bars, front screen and roof screen wipers and heater/screen demister. Rear opening window with wash/wipe. Audio-visual warning system for coolant temperature, engine oil pressure, air-cleaner, battery charge, transmission oil temperature and pressure. Hourmeter and tachometer. Multi lever direct acting hydraulic control levers with joystick control of lift and crowd, gear lever, parkbrake. Throttle and brake pedals. Adjustable deluxe suspension seat.

Load moment indicator: Automatic eye level audio-visual load moment indicator warning system receiving a signal from a load sensor housed on the rear axle. This system continuously monitors the machine's forward stability and leaves the operator in control at all times.

STEERING

Full power hydrostatic steering. Permanent 4WS with 32° lock front and rear axles provides exceptional manoeuvrability.

4WS is provided by a steer priority flow from the main hydraulic pump. Flow is directed through a steer alignment valve to double acting steer rams (1 per axle).

Steering option: Three steer mode options: front wheel steer; all wheel steer; crab steer; operated from in the cab by a selection switch, with automatic alignment.

OPTIONS AND ACCESSORIES

Options: Low cab, working lights, reversing light, reverse alarm, rotating flashing beacon, fire extinguisher, front screen guard, tinted glass, mechanical or hydraulic tow hitch for maximum gross weight of 5 tonnes. Complete with trailer light socket and trailer tip hydraulics, hydraulic pin locking for attachments, 2 boom end auxiliary services. Low ground pressure bearing tyres, spark arrester, catalyst, air conditioning, limited slip differential in front and rear axle.

Attachments: 525-50 is available with hydraulic quickhitch. Contact your local dealer for details of the comprehensive range.



A GLOBAL COMMITMENT TO QUALITY

JCB's total commitment to its products and customers has helped it grow from a one-man business into Britain's largest privately owned manufacturer of backhoe loaders, crawler excavators, wheeled excavators, telescopic handlers, wheeled loaders, dump trucks, rough terrain fork lifts, industrial fork lifts, mini/midi excavators, skid steer loaders and tractors.

By making constant and massive investments in the latest production technology, the JCB factories have become some of the most advanced in Europe.

By leading the field in innovative research and design, extensive testing and stringent quality control, JCB machines have become renowned all over the world for performance, value and reliability.

And with a global sales and service network of over 400 distributors and agents, the company exports over 70% of its production to all five continents.

Through setting the standards by which others are judged, JCB has become one of Britain's most impressive success stories.

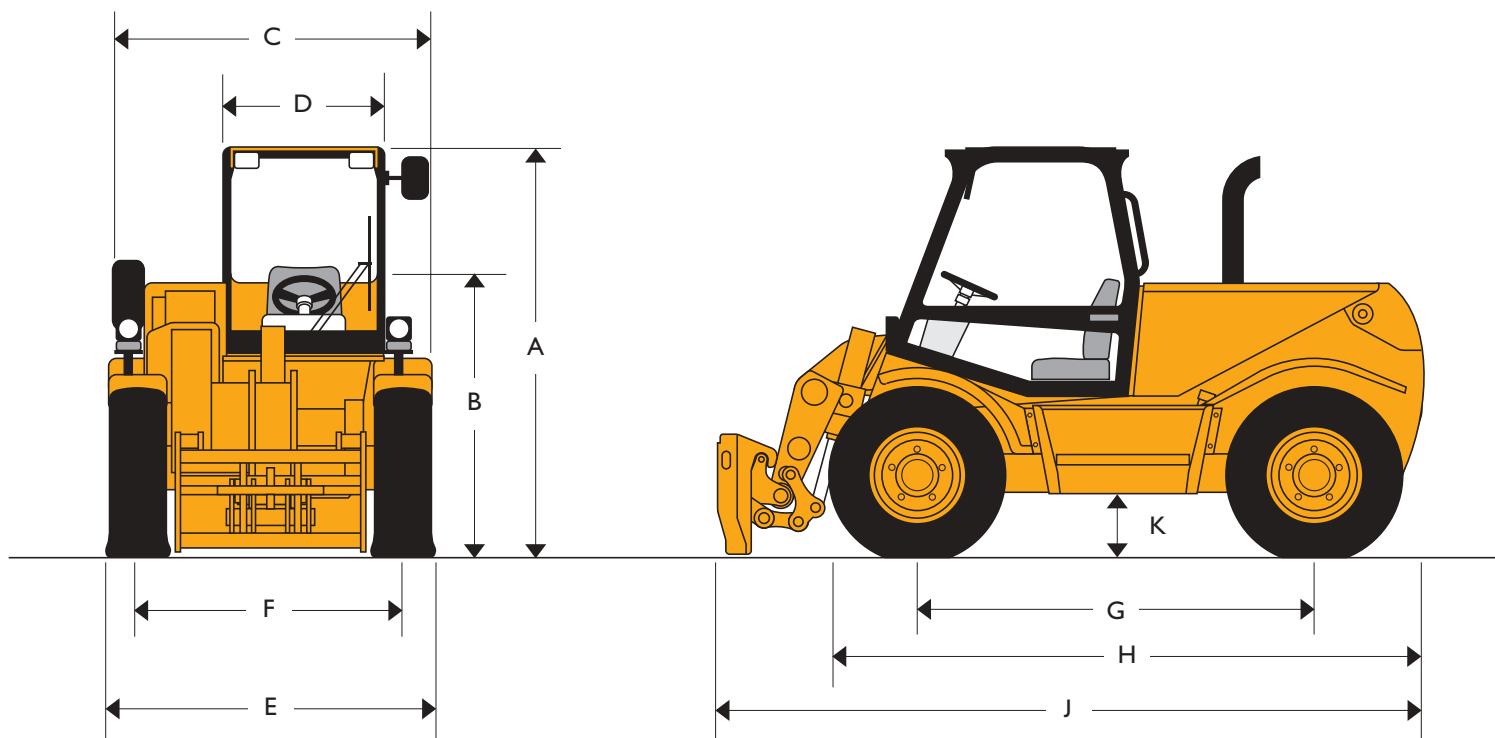




JCB LOADALL FARM SPECIAL | 525-50/525-50S



MAX. PAYLOAD: 2.5 tonnes (5510lb)
 MAX. LIFT HEIGHT: 5.0 metres (16ft-5in)
 MAX. HORSEPOWER: 57.5/74.6 kW (77/100hp)



STATIC DIMENSIONS

Machine model	525-50/525-50S
	m (ft-in)
A Overall height (std cab)	2.19 (7-2)
B Height to top of steering wheel	1.57 (5-2)
C Overall width	1.82 (6-0)
D Inside width of cab	0.83 (2-9)
E Width over tyres	1.82 (6-0)
F Front track	1.49 (4-11)
G Wheelbase	2.00 (6-7)
H Overall length to front tyres	3.13 (10-3)

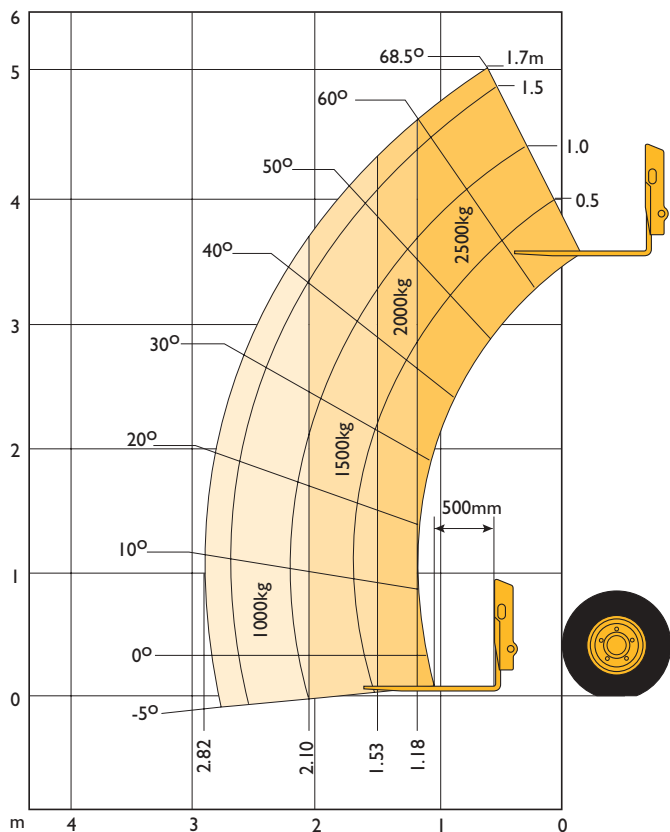
Machine model	525-50/525-50S
	m (ft-in)
J Overall length to front carriage	3.62 (11-10)
K Ground clearance	0.36 (1-2)
Outer turn radius over tyres	3.71 (12-1)
Obstruction/departure angle with/without quickhitch	degrees 30°/58°
Weight	kg (lb) 5400 (11002)
Power to weight ratio 57.5kW (77hp) Engine	9.8kW/tonne
Tyres	12.5 x 18 10pr



JCB LOADALL FARM SPECIAL | 525-50/525-50S



LIFT PERFORMANCE



LIFT PERFORMANCE

Machine Model	525-50/525-50S	
Lift capacity to full height	kg (lb)	2500 (5510)
Lift capacity at full reach	kg (lb)	1000 (2204)
Lift height	m (ft-in)	5.00 (16-5)
Reach at max lift height	m (ft-in)	0.50 (1-8)
Maximum forward reach	m (ft-in)	2.82 (9-3)
Reach with 1 tonne load	m (ft-in)	2.82 (9-3)
Placing height	m (ft-in)	4.60 (15-1)

Complies with stability test EN 1459 Annex B.

LOADER PERFORMANCE

Machine Model	525-50/525-50S	
	Standard GP bucket	
Bucket rated capacity	m ³ (yd ³)	0.90 (1.20)
Bucket struck capacity	m ³ (yd ³)	0.76 (1.02)
Breakout force	kgf (lbf)	2800 (6172)
Dump height (max)	m (ft-in)	4.46 (14-6)
Dump angle at max height	degrees	40°
Loadover height (max)	m (ft-in)	5.09 (16-8)
Rollback angle at ground	degrees	40°
Carriage rotation angle (total)	degrees	150°
Payload (max)	kg (lb)	1620 (3571)
Bucket width	m (ft-in)	1.95 (6-5)

ENGINE

Latest technology and advanced design provides low fuel consumption, reduced noise, high torque and power output, total reliability and minimal maintenance.

Easily replaceable pre-finished dry liners, five bearing, heat treated crankshaft. Expansion controlled pistons. Two-stage, dry type air filter with primary and safety elements.

Engine conforms with EC mobile off-highway emissions regulations (stage I).

Engine options		525-50	525-50S
Displacement	ltr (in ³)	4.20 (256)	3.99 (244)
No. of cylinders		4	4
Bore size	mm (in)	103 (4.06)	100 (3.94)
Stroke	mm (in)	127 (5)	127 (5)
Aspiration		Naturally aspirated	Turbo charged
Power rating @ 2000rpm			
Gross SAE J1349	kW (HP)	57.5 (77)	74.6 (100)
Torque rating @ 1200rpm			
SAE J1349	Nm (lbf ft)	290 (214)	402 (297)
Noise level directive 2000/14/EC	dBA	104	105



JCB LOADALL FARM SPECIAL | 525-50/525-50S



TRANSMISSION

JCB Syncro Shuttle transmission incorporating torque converter, reversing shuttle and all synchromesh 4-speed gearbox (3-speed gearbox in Turbo charged option) in one resiliently mounted unit.

Electro-hydraulic direction control through a steering column mounted switch for modulated forward/reverse shuttling.

Gear lever and loader control transmission disconnect switches for fast gearchanging.

Travel speed 30km/h (18mph).

Front and rear axles: Epicyclic hub reduction type with drop box on front axle. 4WS and permanent 4WD.

BRAKES

Service brakes: Hydraulically activated, power assisted multi disc type brakes. They are oil immersed for long life and fade free braking. Mounted within the planetary hub means that the brakes are direct acting to each wheel, greatly increasing deceleration and eliminating skid potential.

Parking brake: Is an electro/hydraulically operated oil immersed multi disc brake on the transmission output shaft and will hold the machine on 1 in 4 gradients.

BOOM AND CARRIAGE

Boom is manufactured from high tensile steel.

Low maintenance, hard wearing pads.

JCB tool carrier parallel lift carriage with pin locking accepts fork frame with integral pallet forks and a wide range of attachments.

SAFETY CHECK VALVES

Fitted to carriage tilt, telescopic and boom lift rams.

SERVICE CAPACITIES

Fuel tank	litres (UK gal)	90 (9.5)
Hydraulic tank	litres (UK gal)	70 (15.5)
Coolant	litres (UK gal)	20 (4.4)

HYDRAULICS

Single gear pump, with suction strainer and filter. One boom end auxiliary hydraulic service fitted as standard.

Operating system pressure	bar (psi)	241 (3500)
Flow at system pressure (@ 2200rpm)	ltr/min	65
Cycle times		seconds
Boom raise		7.4
Boom lower		5.3
Extend		5.7
Retract		3.2
Bucket dump		2.3
Bucket crowd		3.2

ELECTRICS

12 V negative earth. 92 AH heavy duty battery with isolator. 65 amp alternator. Full road lighting. Direction indicators. Hazard warning.

CAB

Quiet, safe and comfortable cab conforms to ROPS 86/295/EEC and FOPS 86/296/EEC Directives. Toughened glass all round. Tinted with laminated roof screen. Roof bars, front screen and roof screen wipers and heater/screen demister. Rear opening window with wash/wipe. Audio-visual warning system for coolant temperature, engine oil pressure, air-cleaner, battery charge, transmission oil temperature and pressure. Hourmeter and tachometer. Multi lever direct acting hydraulic control levers with joystick control of lift and crowd, gear lever, parkbrake. Throttle and brake pedals. Adjustable deluxe suspension seat.

Load moment indicator: Automatic eye level audio-visual load moment indicator warning system receiving a signal from a load sensor housed on the rear axle. This system continuously monitors the machine's forward stability and leaves the operator in control at all times.

STEERING

Full power hydrostatic steering. Permanent 4WS with 32° lock front and rear axles provides exceptional manoeuvrability. 4WS is provided by a steer priority flow from the main hydraulic pump. Flow is directed through a steer alignment valve to double acting steer rams (1 per axle).

Steering option: Three steer mode options: front wheel steer; all wheel steer; crab steer; operated from in the cab by a selection switch, with automatic alignment.

OPTIONS AND ACCESSORIES

Options: Low cab, working lights, reversing light, reverse alarm, rotating flashing beacon, fire extinguisher, front screen guard, tinted glass, mechanical or hydraulic tow hitch for maximum gross weight of 5 tonnes. Complete with trailer light socket and trailer tip hydraulics, hydraulic pin locking for attachments, 2 boom end auxiliary services. Low ground pressure bearing tyres, spark arrester, catalyst, air conditioning, limited slip differential in front and rear axle.

Attachments: 525-50 is available with hydraulic quickhitch. Contact your local dealer for details of the comprehensive range.



A GLOBAL COMMITMENT TO QUALITY

JCB's total commitment to its products and customers has helped it grow from a one-man business into Britain's largest privately owned manufacturer of backhoe loaders, crawler excavators, wheeled excavators, telescopic handlers, wheeled loaders, dump trucks, rough terrain fork lifts, industrial fork lifts, mini/midi excavators, skid steer loaders and tractors.

By making constant and massive investments in the latest production technology, the JCB factories have become some of the most advanced in Europe.

By leading the field in innovative research and design, extensive testing and stringent quality control, JCB machines have become renowned all over the world for performance, value and reliability.

And with a global sales and service network of over 400 distributors and agents, the company exports over 70% of its production to all five continents.

Through setting the standards by which others are judged, JCB has become one of Britain's most impressive success stories.



JCB LOADALL | 525-50M



FAST FACTS

JCB Military Loadall

- Compact machine designed to work where access and headroom are restricted including ISO containers
- Lifts 2,500kg to a height of 5.0 metres and 1,000kg to full forward reach
- Permanent 4 wheel drive and steering on 4 equal sized wheels for great traction and turning circle
- Military specific options enables correct specification machine for all applications



High Performance
by Design

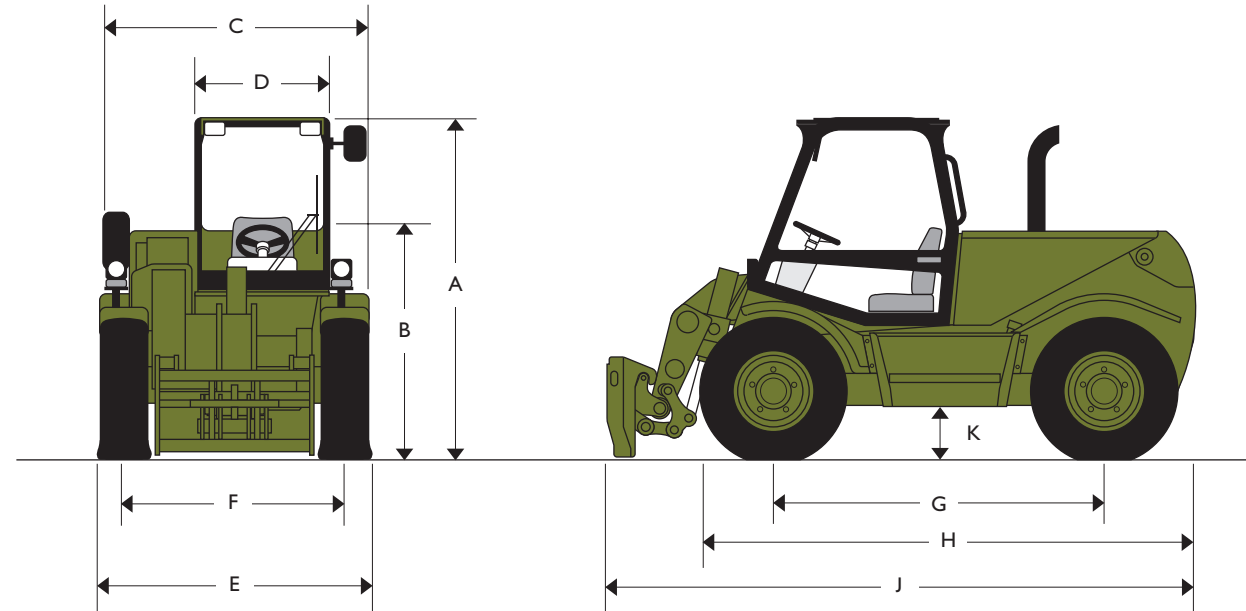




JCB LOADALL | 525-50 MILITARY



MAX. PAYLOAD: 2.5 tonnes (5510lb)
 MAX. LIFT HEIGHT: 5.0 metres (16ft-5in)
 MAX. HORSEPOWER: 57.5/74.6 kW (77/100hp)



STANDARD STATIC DIMENSIONS

Machine model	525-50M
	m (ft-in)
A Overall height (std cab)	2.19 (7-2)
B Height to top of steering wheel	1.57 (5-2)
C Overall width	1.82 (6-0)
D Inside width of cab	0.83 (2-9)
E Width over tyres	1.82 (6-0)
F Front track	1.49 (4-11)
G Wheelbase	2.00 (6-7)
H Overall length to front tyres	3.13 (10-3)

Machine model	525-50M
	m (ft-in)
J Overall length to front carriage	3.62 (11-10)
K Ground clearance	0.36 (1-2)
Outer turn radius over tyres	3.71 (12-1)
Obstruction/departure angle with/without quickhitch	30°/58°
Weight	kg (lb) 5400 (11904)
Power to weight ratio 57.5kW (77hp) Engine	9.8kW/tonne
Tyres – Michelin XM37	335 x 80 R18

STANDARD LIFT PERFORMANCE

Machine Model	525-50M
Lift capacity to full height	kg (lb) 2500 (5510)
Lift capacity at full reach	kg (lb) 1000 (2204)
Lift height	m (ft-in) 5.00 (16-5)
Reach at max lift height	m (ft-in) 0.50 (1-8)
Maximum forward reach	m (ft-in) 2.82 (9-3)
Reach with 1 tonne load	m (ft-in) 2.82 (9-3)
Placing height	m (ft-in) 4.60 (15-1)

Complies with stability test EN 1459 Annex B.

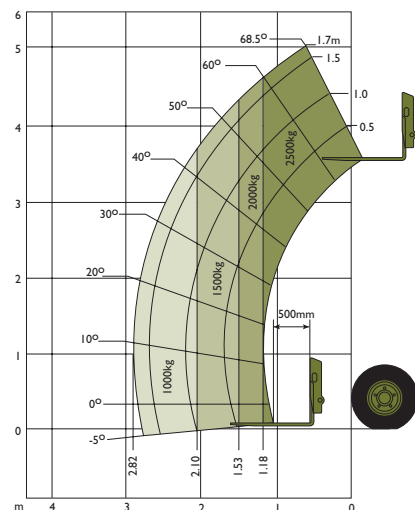


JCB LOADALL | 525-50 MILITARY

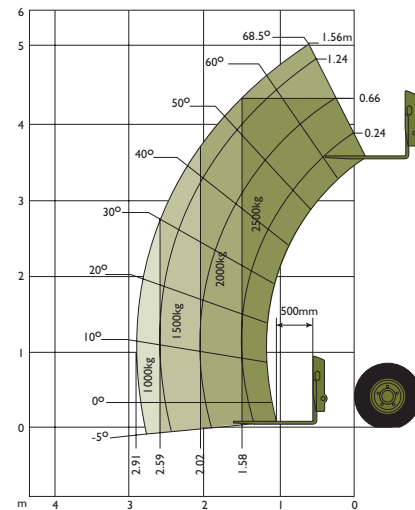


LIFT PERFORMANCE

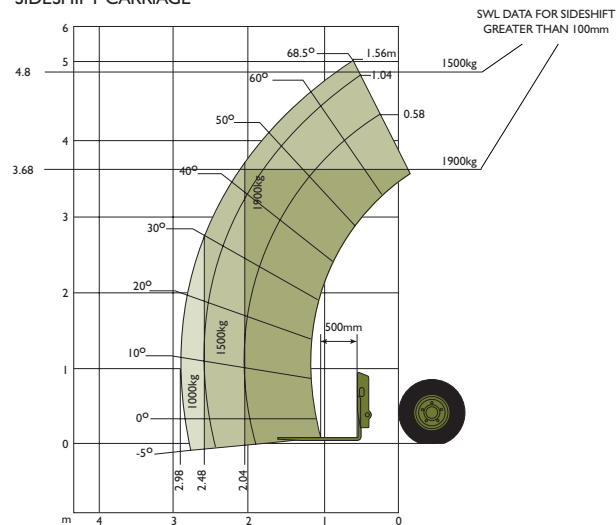
STANDARD CARRIAGE ONLY



FOR MACHINES FITTED WITH 200MM STROKE SIDESHIFT CARRIAGE



FOR MACHINES FITTED WITH 1200MM STROKE SIDESHIFT CARRIAGE



SWL DATA FOR SIDESHIFT LESS THAN 100mm

LOADER PERFORMANCE

Machine Model	525-50M	
	Standard GP bucket	
Bucket rated capacity	m ³ (yd ³)	0.90 (1.20)
Bucket struck capacity	m ³ (yd ³)	0.76 (1.02)
Breakout force	kgf (lbf)	2800 (6172)
Dump height (max)	m (ft-in)	4.46 (14-6)
Dump angle at max height	degrees	40°
Loadover height (max)	m (ft-in)	5.09 (16-8)
Rollback angle at ground	degrees	40°
Carriage rotation angle (total)	degrees	150°
Payload (max)	kg (lb)	1620 (3571)
Bucket width	m (ft-in)	1.95 (6-5)

ENGINE

Latest technology and advanced design provides low fuel consumption, reduced noise, high torque and power output, total reliability and minimal maintenance.

Easily replaceable pre-finished dry liners, five bearing, heat treated crankshaft. Expansion controlled pistons.

Two-stage, dry type air filter with primary and safety elements.

Engine conforms with EC mobile off-highway emissions regulations (stage 1).

Engine options	525-50M	
Displacement	ltr (in ³)	4.20 (256)
No. of cylinders		4
Bore size	mm (in)	103 (4.06)
Stroke	mm (in)	127 (5)
Aspiration	Naturally aspirated	
Power rating @ 2000rpm		
Gross SAE J1349	kW (HP)	57.5 (77)
Torque rating @ 1200rpm		
SAE J1349	Nm (lbf ft)	290 (214)
Noise level directive 2000/14/EC	dBA	104

TRANSMISSION

JCB Syncro Shuttle transmission incorporating torque converter, reversing shuttle and all synchromesh 4-speed gearbox in one resiliently mounted unit.

Electro-hydraulic direction control through a steering column mounted switch for modulated forward/reverse shuttling.

Gear lever and loader control transmission disconnect switches for fast gearchanging.

Travel speed 30km/h (18mph).

Front and rear axles: Epicyclic hub reduction type with drop box on front axle. 4WS and permanent 4WD.

SAFETY CHECK VALVES

Fitted to carriage tilt, telescopic and boom lift rams.

High Performance
by Design



JCB LOADALL | 525-50 MILITARY



BRAKES

Service brakes: Hydraulically activated, power assisted multi disc type brakes. They are oil immersed for long life and fade free braking. Mounted within the planetary hub means that the brakes are direct acting to each wheel, greatly increasing deceleration and eliminating skid potential.

Parking brake: Is an electro/hydraulically operated oil immersed multi disc brake on the transmission output shaft and will hold the machine on 1 in 4 gradients.

STEERING

Full power hydrostatic steering. Permanent 4WS with 32° lock front and rear axles provides exceptional manoeuvrability. 4WS is provided by a steer priority flow from the main hydraulic pump. Flow is directed through a steer alignment valve to double acting steer rams (1 per axle).

Steering option: Three steer mode options: front wheel steer; all wheel steer; crab steer; operated from in the cab by a selection switch, with automatic alignment.

SERVICE CAPACITIES

Fuel tank	litres (UK gal)	90 (9.5)
Hydraulic tank	litres (UK gal)	70 (15.5)
Coolant	litres (UK gal)	20 (4.4)

ELECTRICS

Option 1: 12 V negative earth. 103 AH heavy duty battery with isolator. 65 amp alternator. Full road lighting. Direction indicators. Hazard warning.

Option 2: 24 V negative earth. Twin 115 AH heavy duty battery. 55amp alternator. Full road lighting. Direction indicators. Hazard warning. Lockable battery isolator. Inter-vehicle start socket. heated side and rear screen.

TRANSPORTABILITY

Air transportable in C130, C141 and C-5. Can be slung beneath heavy lift helicopter. Recovery points front and rear. Lifting and tie down points.

ATTACHMENTS

Hydraulic or mechanical quickhitch tool carrier allows rapid change of front end attachments. Standard class 2 carriage. 200mm stroke or 1200mm stroke sideshift fork frame allows placement and recovery of loads from either side of an ISO container. 0.9m³ shovel for loose material handling. Standard carriage load guard.

HYDRAULICS

Single gear pump, with suction strainer and filter. One boom end auxiliary hydraulic service fitted as standard.

Operating system pressure	bar (psi)	241 (3500)
Flow at system pressure (@ 2200rpm)	ltr/min	65
Cycle times		seconds
Boom raise		7.4
Boom lower		5.3
Extend		5.7
Retract		3.2
Bucket dump		2.3
Bucket crowd		3.2

CAB

Quiet, safe and comfortable cab conforms to ROPS 86/295/EEC and FOPS 86/296/EEC Directives. Toughened glass all round. Tinted with laminated roof screen. Roof bars, front screen and roof screen wipers and heater/screen demister. Rear opening window with wash/wipe. Audio-visual warning system for coolant temperature, engine oil pressure, air-cleaner, battery charge, transmission oil temperature and pressure. Hourmeter and tachometer. Multi lever direct acting hydraulic control levers with joystick control of lift and crowd, gear lever, parkbrake. Throttle and brake pedals. Adjustable deluxe suspension seat with retractable seat belt.

Load moment indicator: Automatic eye level audio-visual load moment indicator warning system receiving a signal from a load sensor housed on the rear axle. This system continuously monitors the machine's forward stability and leaves the operator in control at all times.

BOOM AND CARRIAGE

Boom is manufactured from high tensile steel.

Low maintenance, hard wearing pads.

JCB tool carrier parallel lift carriage with pin locking accepts fork frame with integral pallet forks and a wide range of attachments.

OPTIONS AND ACCESSORIES

Options: Low cab, working lights, reversing light, reverse alarm, rotating flashing beacon, fire extinguisher, front screen guard, tinted glass, mechanical or hydraulic tow hitch for maximum gross weight of 5 tonnes. Complete with trailer light socket and trailer tip hydraulics, hydraulic pin locking for attachments, 2 boom end auxiliary services. Low ground pressure bearing tyres, spark arrester, catalyst, air conditioning, limited slip differential in front and rear axle.

Category 'C' protection, 4 tonne NATO tow pintle, jack box and 5 tonne jack, tool box, spare wheel carrier, gun net rack, rifle holder, cab mounted search lights, light guards, winterisation, lifting eyes.





Service Manual

LOADALL

PUBLISHED BY THE
TECHNICAL PUBLICATIONS DEPARTMENT
OF JCB SERVICE; ©
WATERLOO PARK, UTTOXETER,
ST14 5PA, ENGLAND
Tel. 01889 - 590312
PRINTED IN ENGLAND

Publication No. 9803/3650

General Information	1
Care & Safety	2
Routine Maintenance	3
Attachments	A
Body & Framework	B
Electrics	C
Controls	D
Hydraulics	E
Transmission	F
Brakes	G
Steering	H
Engine	K

Introduction

This publication is designed for the benefit of JCB Distributor Service Engineers who are receiving, or have received, training by JCB Technical Training Department.

These personnel should have a sound knowledge of workshop practice, safety procedures, and general techniques associated with the maintenance and repair of hydraulic earthmoving equipment.

Renewal of oil seals, gaskets, etc., and any component showing obvious signs of wear or damage is expected as a matter of course. It is expected that components will be cleaned and lubricated where appropriate, and that any opened hose or pipe connections will be blanked to prevent excessive loss of hydraulic fluid and ingress of dirt. Finally, please remember above all else **SAFETY MUST COME FIRST!**

The manual is compiled in sections, the first three are numbered and contain information as follows:

- 1** = **General Information** - includes torque settings and service tools.
- 2** = **Care & Safety** - includes warnings and cautions pertinent to aspects of workshop procedures etc.
- 3** = **Routine Maintenance** - includes service schedules and recommended lubricants for all the machine.

The remaining sections are alphabetically coded and deal with Dismantling, Overhaul etc. of specific components, for example:

- A** = **Attachments**
- B** = **Body & Framework** ...etc.

The page numbering in each alphabetically coded section is not continuous. This allows for the insertion of new items in later issues of the manual.

Section contents, technical data, circuit descriptions, operation descriptions etc are inserted at the beginning of each alphabetically coded section.

READ the section contents to locate machine types, machine type identification **IS NOT** listed on individual pages.

All sections are listed on the front cover; tabbed divider cards align directly with individual sections on the front cover for rapid reference.

Where a torque setting is given as a single figure it may be varied by plus or minus 3%. Torque figures indicated are for dry threads, hence for lubricated threads may be reduced by one third.

'Left Hand' and 'Right Hand' are as viewed from the rear of the machine facing forwards.

This Service Manual covers the following machines:

520-50 (520 N. Am.) - from Machine Serial Number 754001

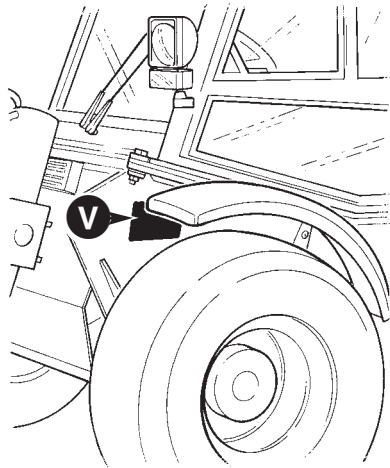
525-50 - from Machine Serial Number 789308

525S - from Machine Serial Number TBA

Contents	Page No.
Identification	1 - 1
Torque Settings	2 - 1
Service Tools	
- Numerical List	3 - 1
- Section C	4 - 1
- Section E	5 - 1
- Section F	6 - 1
- Section H	7 - 1
- Section K	7 - 1
Sealing and Retaining Compounds	8 - 1

Identification Plate

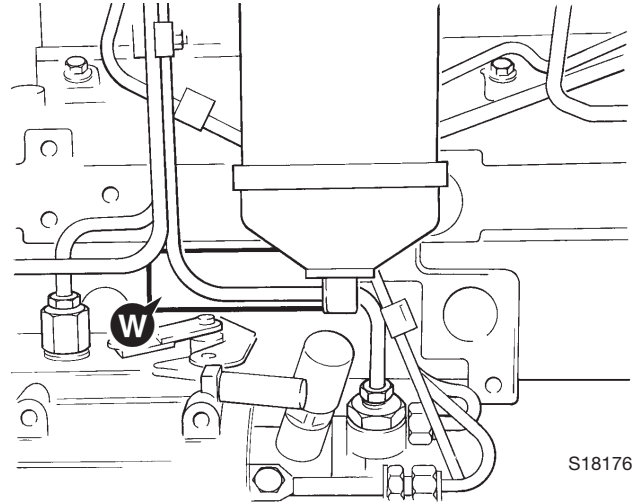
Your machine has an identification plate **V** mounted as shown. The serial numbers of the machine and its major units are stamped on the plate.



S245621

Unit Identification

The engine serial number is stamped on a label **W** which is fastened to the right side of the cylinder block, near the fuel filter.



S181760

Explanation of Vehicle Identification Number (VIN)

SLP52050RE0754001

A B C D E

A	World Manufacturer Identification	SLP = JCB
B	Machine Model	520-50
C	Year of Manufacture	S
	P = 1993	V = 1997
	R = 1994	W = 1998
	S = 1995	X = 1999
	T = 1996	Y = 2000
D	Manufacturing Location	E = England
E	Machine Serial Number	0754001

Machine Model Explanation

520 - 50
F G H

- F** 500 Series machine range
- G** 2.0 tonnes lift capacity
- H** 5.0 meters lift height

The serial number of each major unit is also stamped on the unit itself. If a major unit is replaced by a new one, the serial number on the identification plate will be wrong. Either stamp the new number of the unit on the identification plate, or simply stamp out the old number. This will prevent the wrong unit number being quoted when replacement parts are ordered.

The machine and engine serial numbers can help identify exactly the type of equipment you have.

Typical Engine Identification Number

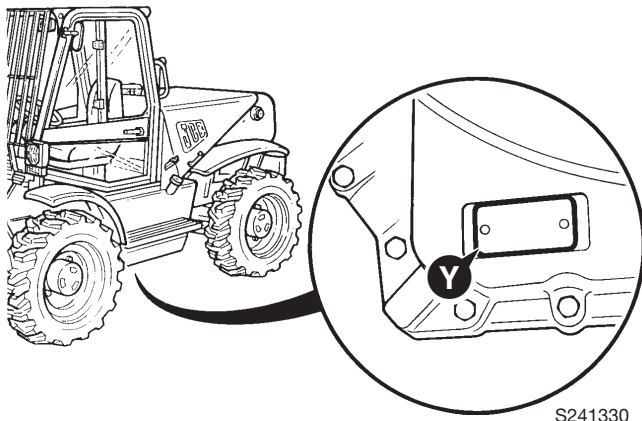
AA 50261 U 500405 P
A B C D E

- A** Engine Type
AA = 4 cylinder naturally aspirated
AB = 4 cylinder turbo
- B** Build Number
- C** Country of Origin
- D** Engine Sequence Number
- E** Year of Manufacture

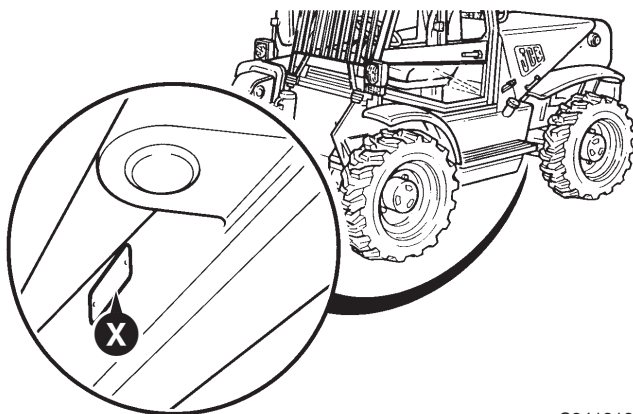
The Transmission serial number is stamped on label **Y** which is mounted on the rear face.

The rear axle serial number is stamped on plate **X** mounted to the front face of the axle.

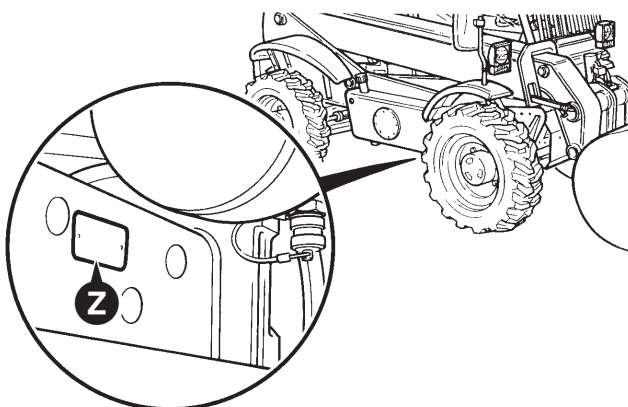
The front axle serial number is stamped on plate **Z** mounted on the rear face of the arm.



S241330



S241310



S241320

Jcb Loadall 525 50 Service Manuals

Full download: <http://manualplace.com/download/jcb-loadall-525-50-service-manuals/>