

Item	Part no.	Change No.	Description	Remarks	Usage code	Qty
1	476/80101		Counterweight, 40kg			16
2	476/80102	Superseded	Frame			1
	477/00665		Frame	Introduced on M636303		1
3	476/80103		Pin, fixing			1
4	476/09700		Link, top			1
5	476/90304		Pin, pivot			2
6	826/01166		Pin, lynch			5
7	476/70607		Ball, CAT 3-2			2
7A	476/06301		Bush, reducer, CAT 3 - CAT 2			1
9	826/01248		Stud, bar	Weight retainer		1
10	1370/0701Z		Nut			2
11	1420/0012Z		Washer			2

## Machine groups

Details

Machine group

From serial no.

To serial no.

CONTRACTOR 150T

FASTRAC 125

FASTRAC 135T

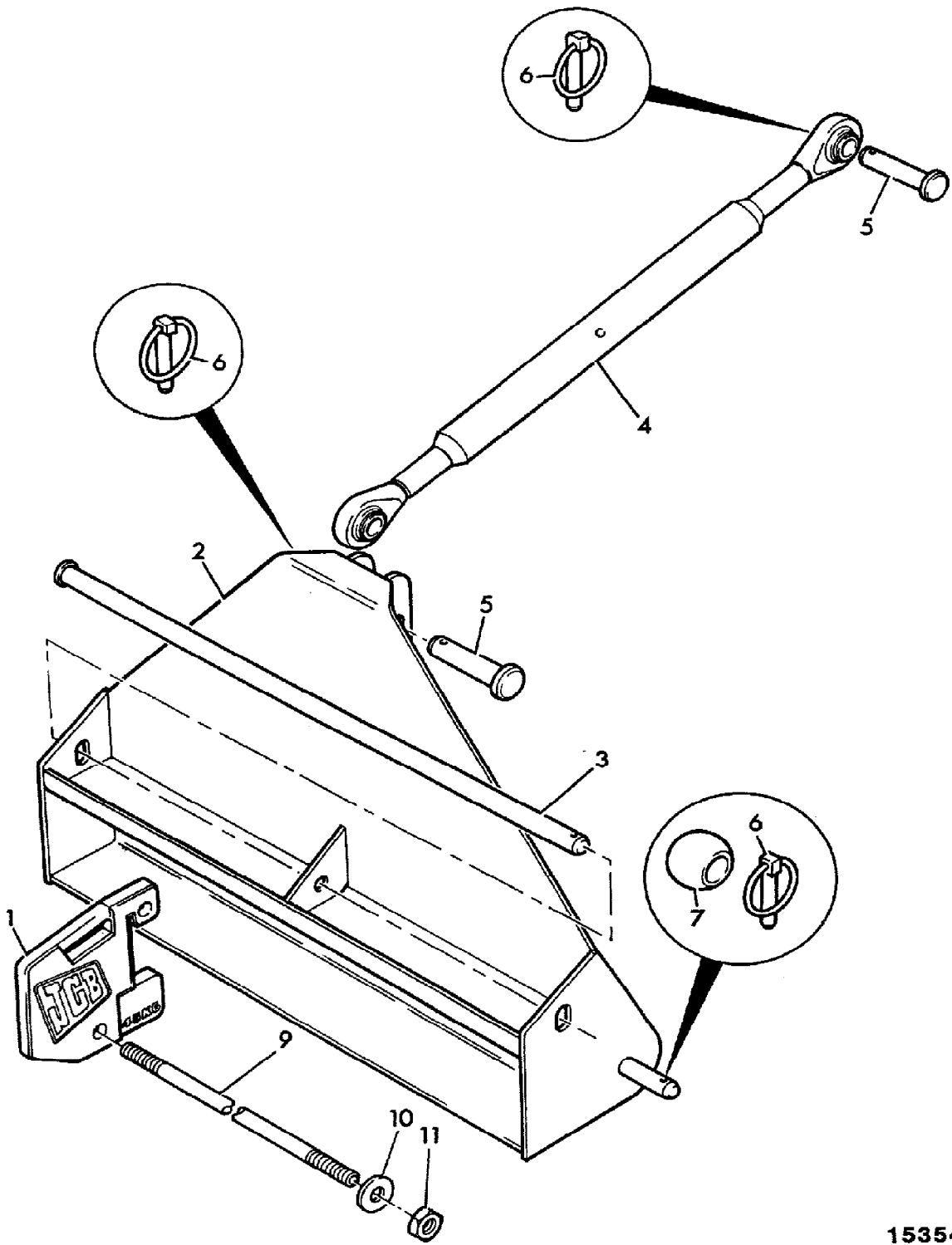
FASTRAC 145T

FASTRAC 155T

FASTRAC 185Ti

FASTRAC-155T

FASTRAC-185Ti



153542

# 9802/6600 A3-1-2 WEIGHT TRAY ASSEMBLY, FRONT, NO HITCH

Illustration

Machines

Top of catalogue

Item	Part no.	Change No.	Description	Remarks	Usage code	Qty
1	477/06400	toS/N636226	Frame, weight tray			1
	477/35400	toS/N636440	Frame, weight tray			1
	477/35900	toS/N637818	Frame, weight tray			1
	480/05500		Frame, weight tray			1
2	476/80101		Counterweight, 40kg			16
3	476/80103		Pin, fixing			1
4	826/01166		Pin, lynch			1
5	826/01248		Stud, bar			1
6	1370/0701Z		Nut			2
7	1420/0012Z		Washer			2
8	835/00102		Plug			4
9	1315/3712Z		Bolt, M16x50M			4
10	1370/0603Z		Nut, M16			4
11	477/00154		Step, access			1
12	1420/0011Z		Washer, M16 plain			8

## Machine groups

Details

Machine group

From serial no.

To serial no.

CONTRACTOR 150T

FASTRAC 125

FASTRAC 135T

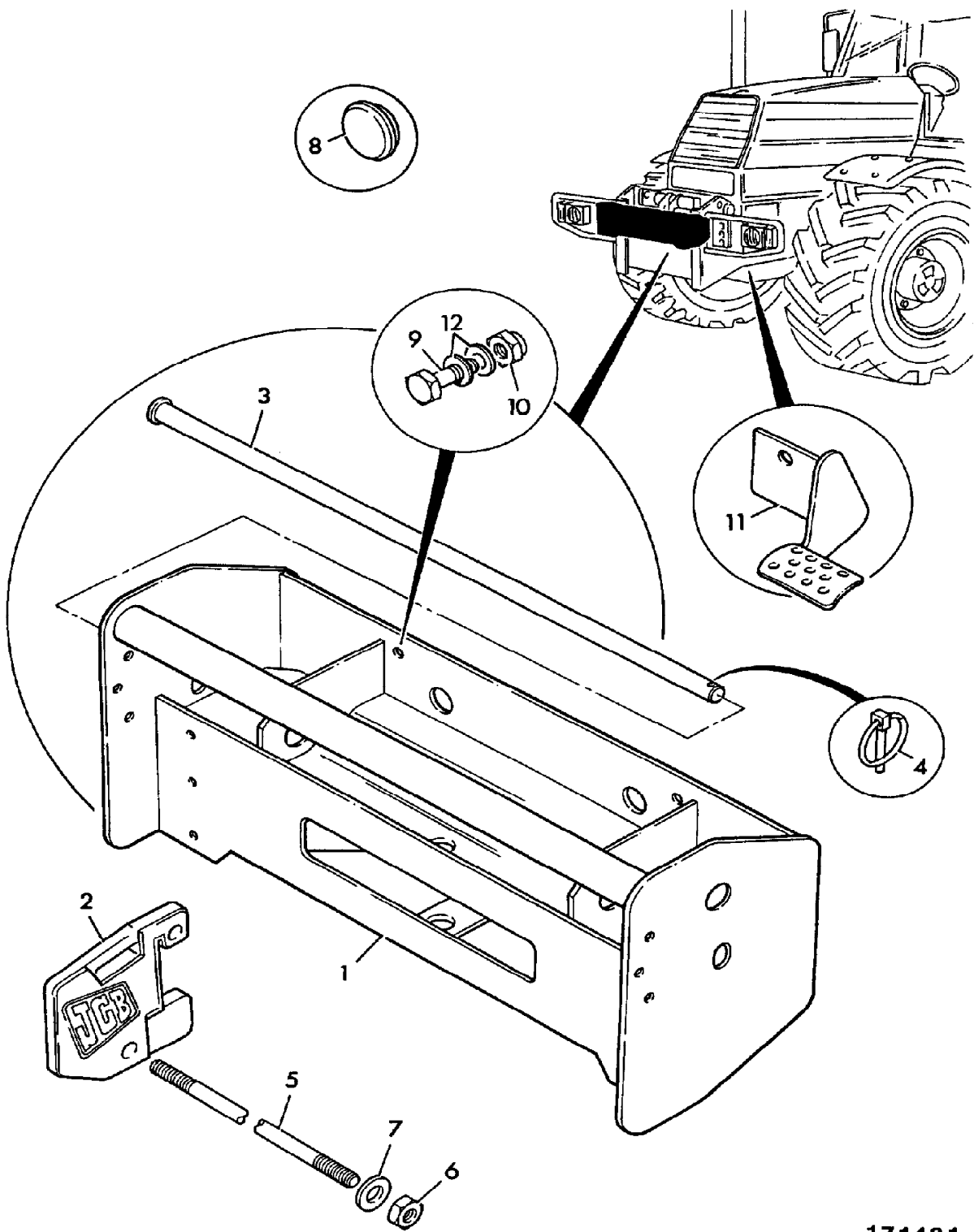
FASTRAC 145T

FASTRAC 155T

FASTRAC 185Ti

FASTRAC-155T

FASTRAC-185Ti



171431

# 9802/6600 A3-10-1 SWINGING DRAWBAR, PITON OPTION, WITH LADDER HITCH

Illustration

Machines

Top of catalogue

Item	Part no.	Change No.	Description	Remarks	Usage code	Qty
1	477/00900		Hitch, ladder, short	SCHARMULLER		1
	476/83400	toS/N636433	Hitch, ladder	ROCKINGER		1
	477/20400		Hitch, ladder	ROCKINGER		1
2	477/00155		Block, bearing pivot			2
3	1420/0012Z		Washer			4
4	1315/3814Z		Bolt, M20 x 60mm			2
5	476/84800		Hitch, drawbar			1
	477/52300		Drawbar, c/w bolt-on clevis	ITALY, 28mm pin		1
	477/51800		Drawbar, c/w bolt-on clevis, no pick-up hitch			1
	477/61200	Superseded	Drawbar, hitch, with bolt on clevis	NORTH AMERICA ONLY		1
	M.S.S		Multi Supersession	PART N.L.A use items 5B,5C with 5A		1
5A	1315/3816Z		:Bolt, M20 x 70			2
5B	477/01286		Drawbar	NORTH AMERICA ONLY		1
5C	477/01287		Clevis	NORTH AMERICA ONLY		1
6	476/80803		Pin, recovery hitch			1
7	1370/0603Z		Nut, M16			2
8	1315/3720Z		Bolt			2
9	477/06500		Frame, PTO drawbar, and PITONFIX assembly			1
9A	477/06600		:Frame, drawbar	No PITONFIX		1
9B	478/19954		:Lever, piton			1
9C	1315/3818Z		:Bolt, M20 x 80mm			1
9D	1370/0703Z		:Nut, M20			1
9E	478/19953		:Kit-pin and clip, piton lever			1
9F	476/84703		:Pin			1
9G	476/84704		:Clip, R			1
9H	478/19951		:Kit-pin and clip, 20mm			2
10	477/00506	toS/N636433	Plate, top link	Use with Rockinger ladder hitch		2

	477/00105	toS/N637024	Plate, top link	Use with Rockinger lader hitch		2
	477/00105	toS/N637024	Plate, top link	Always used with Sharmuller ladder hitch		2
	477/01271		Plate, LH top link	USE WITH ROCKINGER and SCHARMULLER HITCHES		1
	477/01272		Plate, RH top link	USE WITH ROCKINGER and SCHARMULLER HITCHES		1
11	829/00397		Spacer			4
16	477/00011		Bracket, lower link, L.H.			1
	477/01273	S/N637550 on	Bracket, lower link LH short	See note 1 No longer available		1
	477/00226		Bracket, lower link, long casting L.H.	Australian m/c's w/o trailer couplings.		1
	477/01275	S/N637562 on	Bracket, lower link LH long	See note 2 No longer available.		1
17	477/00012		Bracket, lower link, RH			1
	477/01274	S/N637550 on	Bracket, lower link RH short	No longer available. See Note 1.		1
	477/00227		Bracket, lower link, long casting R.H.	Australian m/cs w/o trailer couplings.		1
	477/01276	S/N637562 on	Bracket, lower link RH long.	No longer available. See Note 2.		1
18	1315/3828Z		Bolt, M20 x 180mm long			2
19	1315/3826Z		Bolt, M20 x 160mm long			2
20	476/30002		Shaft, cross, 580mm long, approx 45mm dia			1
21	823/00460		Washer, support, 45mm I.D.			2
22	821/00342		Circlip			2
23	826/01407	Superseded	Capscrew, M20 x 340mm long			2
	826/01480		Capscrew, M20 x 340mm			2
24	1420/0012Z		Washer			12
25	826/01689		Bolt, special			2
26	1370/0703Z		Nut, M20			2
27	1370/0703Z		Nut, M20			6
28	477/01278		Spacer, T=9mm			1

## Note 1

For 185 m/c's, use 477/00011 (L.H.) or 477/00012 (R.H.) with 3 off 477/01278 (item 28).

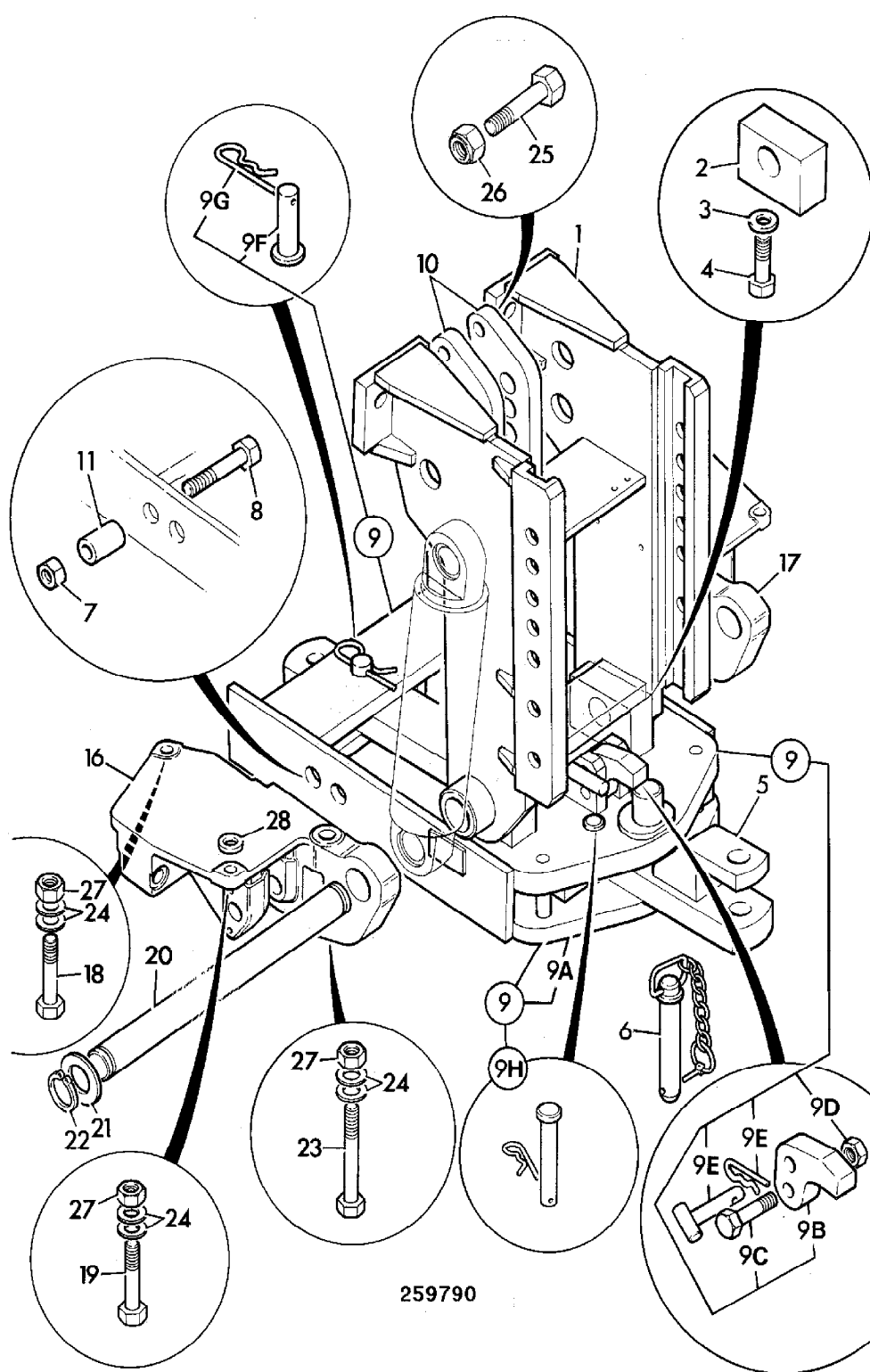
## Note 2

For 185 m/c's, use 477/00226 (L.H.) or 477/00227 (R.H.) with 3 off 477/01278 (item 28).

## Machine groups

Details

Machine group	From serial no.	To serial no.
CONTRACTOR 150T		
FASTRAC 125		
FASTRAC 135T		
FASTRAC 145T		
FASTRAC 155T		
FASTRAC 185Ti		
FASTRAC-155T		
FASTRAC-185Ti		



259790



# 9802/6600 A3-10-5 SWINGING DRAWBAR, PITON OPTION, WITHOUT LADDER HITCH

Illustration

Machines

Top of catalogue

Item	Part no.	Change No.	Description	Remarks	Usage code	Qty
1	476/85201		Spacer, tube, 60mm long	For use WITH rear hitch and rams		2
1A	970/10020	Superseded	Spacer, tube, 100mm long	For use WITHOUT rear hitch and rams		2
	477/01748		Spacer, tube, 100mm long			2
2	477/00155		Block, bearing pivot			2
3	1420/0012Z		Washer			4
4	1315/3814Z		Bolt, M20 x 60mm			2
5	476/84800		Hitch, drawbar			1
	477/52300		Drawbar, c/w bolt-on clevis	ITALY, 28mm dia pin		1
	477/51800		Drawbar, c/w bolt-on clevis, no pick-up hitch			1
	477/61200	Superseded	Drawbar, hitch, with bolt on clevis	NORTH AMERICA ONLY		1
	M.S.S		Multi Supersession	Part N.L.A use items 5B,5C with 5A		1
5A	1315/3816Z		:Bolt, M20 x 70			2
5B	477/01286		Drawbar	NORTH AMERICA ONLY		1
5C	477/01287		Clevis	NORTH AMERICA ONLY		1
6	476/80803		Pin, recovery hitch			1
7	1370/0603Z		Nut, M16			2
8	1315/3720Z		Bolt			2
9	477/06500		Frame, PTO drawbar, and PITONFIX assembly			1
9A	477/06600		:Frame, drawbar	No PITONFIX		1
9B	478/19954		:Lever, piton			1
9C	1315/3818Z		:Bolt, M20 x 80mm			1
9D	1370/0703Z		:Nut, M20			1
9E	478/19953		:Kit-pin and clip, piton lever			1
9F	476/84703		:Pin			1
9G	476/84704		:Clip, R			1
9H	478/19951		:Kit-pin and clip, 20mm			1
11	829/00397		Spacer			4

16	477/00011		Bracket, lower link, L.H.		1
	477/01273	S/N637550 on	Bracket, lower link LH short	See note 1 No longer available.	1
	477/00226		Bracket, lower link, long casting L.H.	Australian m/cs w/o trailer couplings.	1
	477/01275	S/N637562 on	Bracket, lower link LH long	See note 2 No longer available.	1
17	477/00012		Bracket, lower link, RH		1
	477/01274	S/N637550 on	Bracket, lower link RH short	No longer available. See Note 1.	1
	477/00226		Bracket, lower link, long casting L.H.	Australian m/cs w/o trailer couplings.	1
	477/01276	S/N637562 on	Bracket, lower link RH long.	No longer available. See Note 2.	1
18	1315/3828Z		Bolt, M20 x 180mm long		2
19	1315/3826Z		Bolt, M20 x 160mm long		2
20	476/30002		Shaft, cross, 580mm long, approx 45mm dia		1
21	823/00460		Washer, support, 45mm I.D.		2
22	821/00342		Circlip		2
23	826/01407	Superseded	Capscrew, M20 x 340mm long		2
	826/01480		Capscrew, M20 x 340mm		2
24	1420/0012Z		Washer		12
27	1370/0703Z		Nut, M20		6
28	477/01278		Spacer, T=9mm		1

## Note 1

For 185 m/c's, use 477/00011 (L.H.) or 477/00012 (R.H.) with 3 off 477/01278(item 28).

## Note 2

For 185 m/c's, use 477/00226 (L.H.) or 477/00227 (R.H.) with 3 off 477/01278(item 28).

## Machine groups

Details

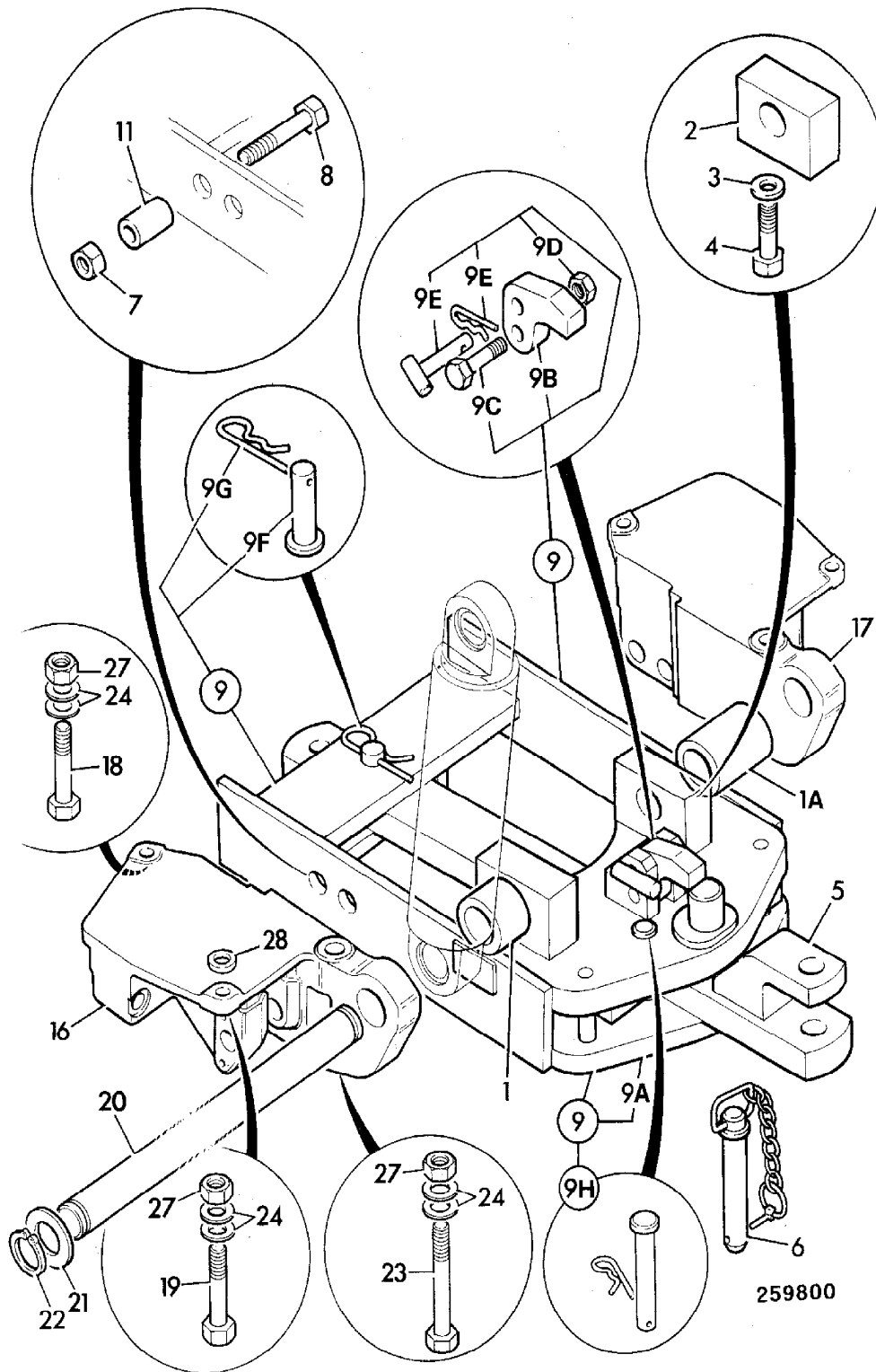
Machine group                      From serial no.                      To serial no.

CONTRACTOR 150T

FASTRAC 125

FASTRAC 135T

FASTRAC 145T  
FASTRAC 155T  
FASTRAC 185Ti  
FASTRAC-155T  
FASTRAC-185Ti



## 9802/6600 A3-11-1 PICK-UP HITCH

Illustration

Machines

Top of catalogue

Item	Part no.	Change No.	Description	Remarks	Usage code	Qty
1	476/30700		Frame			1
2	476/30801		Arm, bracket assembly, right hand			1
3	476/30802		Arm, bracket assembly, left hand			1
4	477/00167		Lock, pawl assembly			1
5	476/30600		Arm, link			2
5A	476/30607		:Bolt, adjustable eye			1
5B	476/30608		:Nut, thin, locking			1
6	476/30805	toS/N637041	Pin			2
	477/01269	S/N637042 on	Pin, pivot, 192mm long			2
	478/01298	S/N637042 on	Pin, pivot			2
	476/30012	toS/N637041	Pin, pivot			2
	477/01308	S/N637042 on	Pin, pivot, 122mm long			2
	478/01296	S/N637042 on	Pin, pivot			2
7	476/30806		Tube, centre - hook keep			1
8	826/01166		Pin, lynch			2
9	1411/0012Z		Washer			2
10	1410/0009Z		Washer			4
11	826/01278		Pin, linch, 8mm dia			2
12	826/01278		Pin, linch, 8mm dia			2
13	476/26706		Wire, rope 250mm long, linch pin retaining	German standard		4
14	476/26709		Ring, wire, split			4
15	477/00226		Bracket, lower link, long casting L.H.			1
	477/01275	S/N637562 on	Bracket, lower link LH long	See note 1 No longer available.		1
16	477/00227		Bracket, lower link, long casting R.H.	185		1
	477/01276	S/N637562 on	Bracket, lower link RH long.	No longer available. See Note 1.		1
17	476/30001		Shaft, cross, 607mm long 39.mm dia			1
18	823/00459		Washer, support, 40mm I.D.			2
19	821/00341		Circlip			2
20	476/30002		Shaft, cross, 580mm long, approx 45mm dia			1

21	823/00460		Washer, support, 45mm I.D.		2
22	821/00342		Circlip		2
23	477/01278		Spacer, T=9mm		6

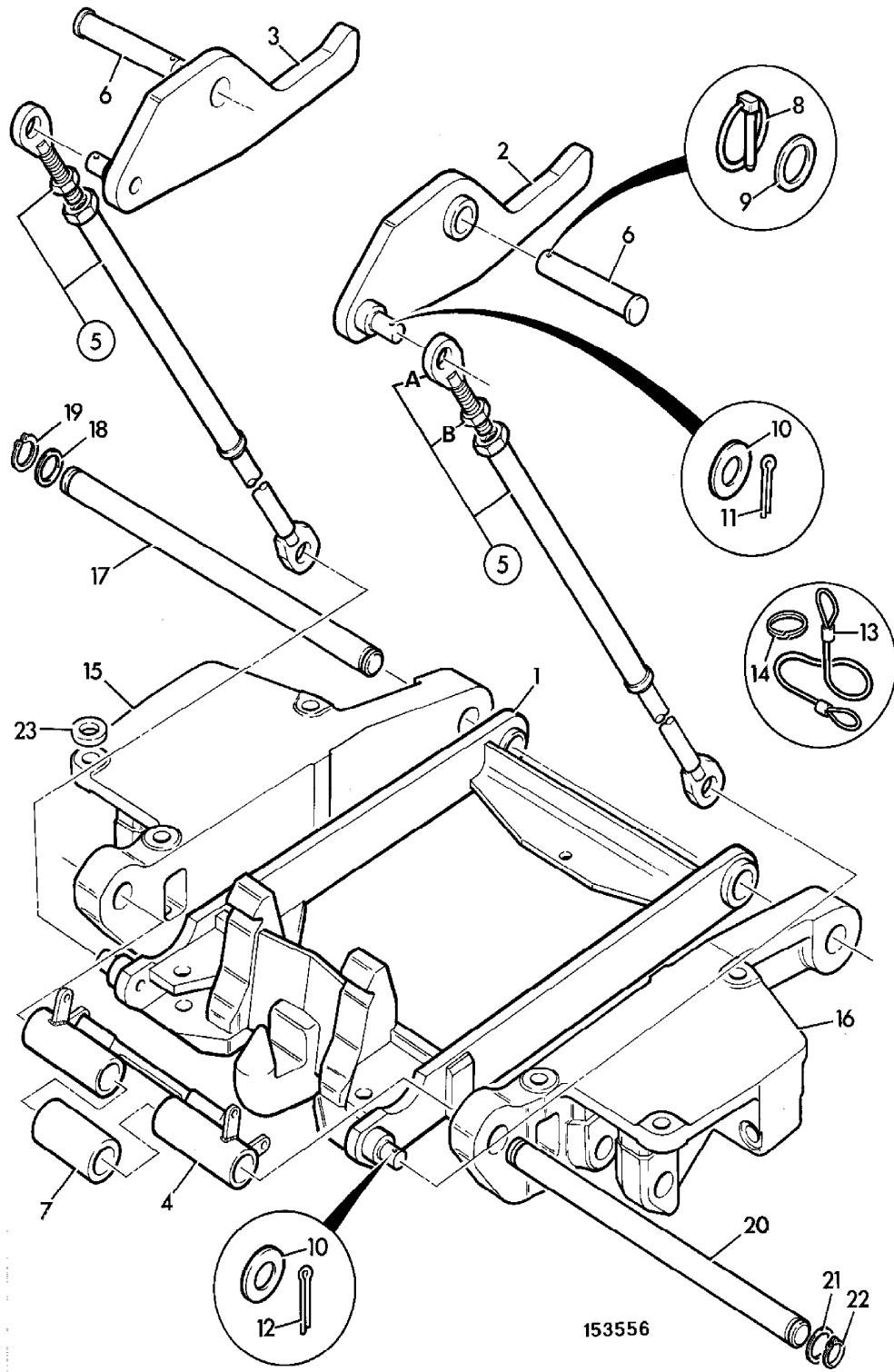
## Note 1

For 185 m/c's, use 477/00226 (L.H.) or 477/00227 (R.H.) with 3 off 477/01278 (item 23).

## Machine groups

Details

Machine group	From serial no.	To serial no.
CONTRACTOR 150T		
FASTRAC 125		
FASTRAC 135T		
FASTRAC 145T		
FASTRAC 155T		
FASTRAC 185Ti		
FASTRAC-155T		
FASTRAC-185Ti		



153556

# 9802/6600 A3-12-1 HITCH ASSEMBLY, REAR

Illustration

Machines

Top of catalogue

Item	Part no.	Change No.	Description	Remarks	Usage code	Qty
2	1315/3828Z		Bolt, M20 x 180mm long	For lower link bracket		2
3	1315/3826Z		Bolt, M20 x 160mm long	For lower link bracket		2
4	826/01407	Superseded	Capscrew, M20 x 340mm long	For lower link bracket		2
	826/01480		Capscrew, M20 x 340mm	For lower link bracket		2
5	1370/0703Z		Nut, M20			18
6	476/62005	toS/N638295	Bracket, axle harness clip, 90 deg.			2
	476/62005	S/N638296 on	Bracket, axle harness clip, 90 deg.			1
7	1370/0702Z	toS/N638295	Nut, thin M20			2
	1370/0702Z	S/N638296 on	Nut, thin M20			1
8	477/00189	toS/N638295	Bracket, chain link	On V link		2
9	476/30002		Shaft, cross, 580mm long, approx 45mm dia			1
10	823/00460		Washer, support, 45mm I.D.			2
11	821/00342		Circlip			2
12	477/00038	Superseded	Bracket, mounting stabiliser			2
	477/00699	Superseded	Bracket, stabiliser mounting			2
	477/01632		Bracket, stabiliser mounting			2
	478/00905		Bracket, stabiliser mounting	For 185 PD90 Axles.		2
12A	1420/0012Z		:Washer	To go with 478/00905.		8
13	826/01404	toS/N638295	Nut, thin M18			2
14	1315/3818Z		Bolt, M20 x 80mm	Was 4 off		3
15	1315/3819Z		Bolt, M20 x 90			1
16	477/00421		Bracket, top link retainer			1
17	1315/0305Z		Screw, M8 x 20mm long			4
18	477/00157		Pin, retainer, top link			1
19	826/01278		Pin, linch, 8mm dia			1
20	826/01166	toS/N637041	Pin, lynch			5
	826/01166	S/N637042 on	Pin, lynch			3
22	1315/3819Z		Bolt, M20 x 90			4
23	476/30015	toS/N637024	Pin, pivot	Top link CAT3		1
	476/30030	toS/N637024	Pivot, pin	Use with Rockinger hitch		1
	477/01270		Pin, top link			1

24	826/01166		Pin, lynch			1
26	476/30014		Pin, lift, 235mm long, Approx 35mm Dia			2
27	823/00461		Washer, support, 35mm I.D.			4
28	821/00340		Circlip			4
29	.		'See Remark'	See index for options		2
30	476/39000	toS/N636430	Link, lower L.H. CAT 3	See note 1		1
	477/50600		Link, lower, left hand, CAT 3	See note 2		1
31	476/39100	toS/N636430	Link, lower R.H. CAT 3	See note 3		1
	477/50700		Link, lower, right hand, CAT 3	See note 4		1
33	476/30016	toS/N637041	Pin, pivot, 25mm x 110mm long			2
33A	477/01269	to21/08/96	Pin, pivot, 192mm long	UK ONLY		2
	478/01298		Pin, pivot			2
33B	477/01308	to21/08/96	Pin, pivot, 122mm long	CONTINENTAL ONLY		2
	478/01296		Pin, pivot			2
33C	477/01309	to21/08/96	Pin, locking			2
33D	1316/3521Z		Bolt			2
33E	1370/0403Z		Nut, M12			2
34	476/30020	toOCT 94	Pin, draft, 40KN			2
	477/00986	NOV 94 on	Pin, draft, 40KN			2
	477/01161	toOCT 94	Pin, draft, 60KN	See note 5		2
	477/00996	NOV 94 on	Pin, draft 60KN			2
35	476/30003		Clamp, draft pin			2
36	1315/3409Z		Bolt			4
37	477/00109	toTBA	Shield, drift pin, L.H.	Left hand		1
	478/00346	TBA on	Shield, draught pin,LH			1
38	477/00110	toTBA	Shield, drift pin, R.H.	Right hand		1
	478/00347	TBA on	Shield, draught pin,RH			1
39	476/30019	toS/N637738	Switch, position sensor			1
	478/00398		Switch, position sensor			1
39A	.		'See Remark'	See note 6		1
40	826/01256		Nut, M24			2
41	477/00162		Bracket, position sensor			1
43	477/00139	toS/N637478	Bracket, rear, crossmember			1
	477/01413		Bracket, Rear Crossmember			1
44	476/30022		Spacer, crossmember, 3mm			2
45	476/30023		Spacer, crosmember, 5mm			1
46	476/30024		Spacer, crossmember, 10mm			2
47	1315/3816Z		Bolt, M20 x 70			6
48	1420/0012Z		Washer	For items 2, 3, 4, 14, 22, 47, and 67		28
49	828/00162		Grommet	For items 37		2



				and 38		
50	477/03600	Superseded	Hitch, tower casting, assembly			1
	477/36600	S/N636309 on	Hitch, tower casting, assembly			1
	477/62200	S/N637042 on	Hitch, tower casting, assembly, standard	STANDARD		1
	477/62100	toS/N637229	Hitch, tower casting, assembly, heavy duty			1
	477/70800	S/N637230 on	Hitch, tower casting H/D, assy	90 dia.		1
51	1450/0001		:Nipple, grease, straight, 1/8 BSP			2
52	476/30007	toS/N637041	:Arm, lift, L.H.			1
52A	477/01263	Superseded	:Arm, lift,LH			1
	477/01402		:Arm, lift, left hand	66.8dia		1
52B	477/01265	Superseded	:Arm, lift L/H H/D	FROM 1/5/95		1
	477/01399		:Arm, lift L/H H/D	84dia		1
53	476/30009	Superseded	:Shaft, lift arm			1
	477/00825	S/N636309 on	:Shaft, lift arm			1
	477/01262		:Shaft, lift arm, 90 DIA	90 DIA.		1
54	476/30033	toS/N637041	:Arm, lift, R.H.			1
54A	477/01264	Superseded	:Arm, lift,RH			1
	477/01403		:Arm, lift, right hand			1
54B	477/01266	Superseded	:Arm, lift R/H H/D	FROM 1/5/95		1
	477/01401		:Arm, lift R/H H/D			1
55	477/00001	toS/N637041	:Mounting, rear, hitch			1
	477/01311	S/N637042 on	:Tower, casting	STANDARD		1
	477/01310	S/N637158 on	:Tower, casting H/D	HEAVY DUTY.		1
56	808/10010		:Bush, 70.4mm ID 82.6mm lg			2
	808/10016		:Bush, Heavy Duty			2
57	821/00339		:Circlip			2
	821/00431		:Circlip, 90mm			2
58	823/00458		:Washer, support			2
	823/00541		:Washer, Support, 90MM DIA			2
60	477/00011		Bracket, lower link, L.H.	Use with swinging drawbar and pitonfix.		1
	477/01273	S/N637550 on	Bracket, lower link LH short	See note 7 No longer available.		1
	477/00226		Bracket, lower link, long casting L.H.	Australian m/cs w/o trailer couplings.		1
	477/01275	S/N637502 on	Bracket, lower link LH long	See note 8 No longer available.		1
61	477/00012		Bracket, lower link, RH	Use with swinging		1

	477/01274	S/N637550 on	Bracket, lower link RH short	drawbar and pitonfix. No longer available. See Note 1.		1
	477/00227		Bracket, lower link, long casting R.H.	Australian m/cs w/o trailer couplings.		1
	477/01276	S/N637562 on	Bracket, lower link RH long.	No longer available. See Note 2.		1
66	477/00105	toS/N637024	Plate, top link	FOR USE WITH SCHARMULLER LADDER HITCH		2
	477/00506	toS/N636433	Plate, top link	USE WITH ROCKINGER LADDER HITCH		2
	477/00105	toS/N637024	Plate, top link	USE WITH ROCKINGER LADDER HITCH.		2
	477/00105	toS/N637024	Plate, top link	FOR USE WHEN LADDER HITCH NOT FITTED		2
	477/01271		Plate, LH top link	USE WITH ROCKINGER and SCHARMULLER HITCHES		1
	477/01272		Plate, RH top link	USE WITH ROCKINGER and SCHARMULLER HITCHES		1
67	826/01689		Bolt, special			2
68	1370/0703Z		Nut, M20			2
69	477/00487		Link, drawbar CAT 3			1
70	476/30026		Ball, CAT 3			2
71	826/01271		Pin, linch, 47mm Dia			2
72	477/00803	S/N636179 on	Tube, spacer 394mm long	Fitted to machines without trailer couplings		1
73	477/01278		Spacer, T=9mm	185 ONLY, USE WITH 477/00011 and 477/00226		6

## Note 1

USE ONLY WITH LIFT RODS 477/24000, 477/29600, & 476/27700

## Note 2

USE ONLY WITH LIFT ROD 477/50800

## Note 3

USE ONLY WITH LIFT RODS 477/24000, 477/29600 & 476/27700

## Note 4

USE ONLY WITH LIFT ROD 477/50800

## Note 5

USE WITH LINK HARNESS 719/84300

## Note 6

POSITION SENSOR FEED WIRES ARE PART OF THE CHASSIS HARNESS.

## Note 7

For 185 m/c's, use 477/00011 (L.H.) or 477/00012 (R.H.) with 3 off 477/01278 (item 73).

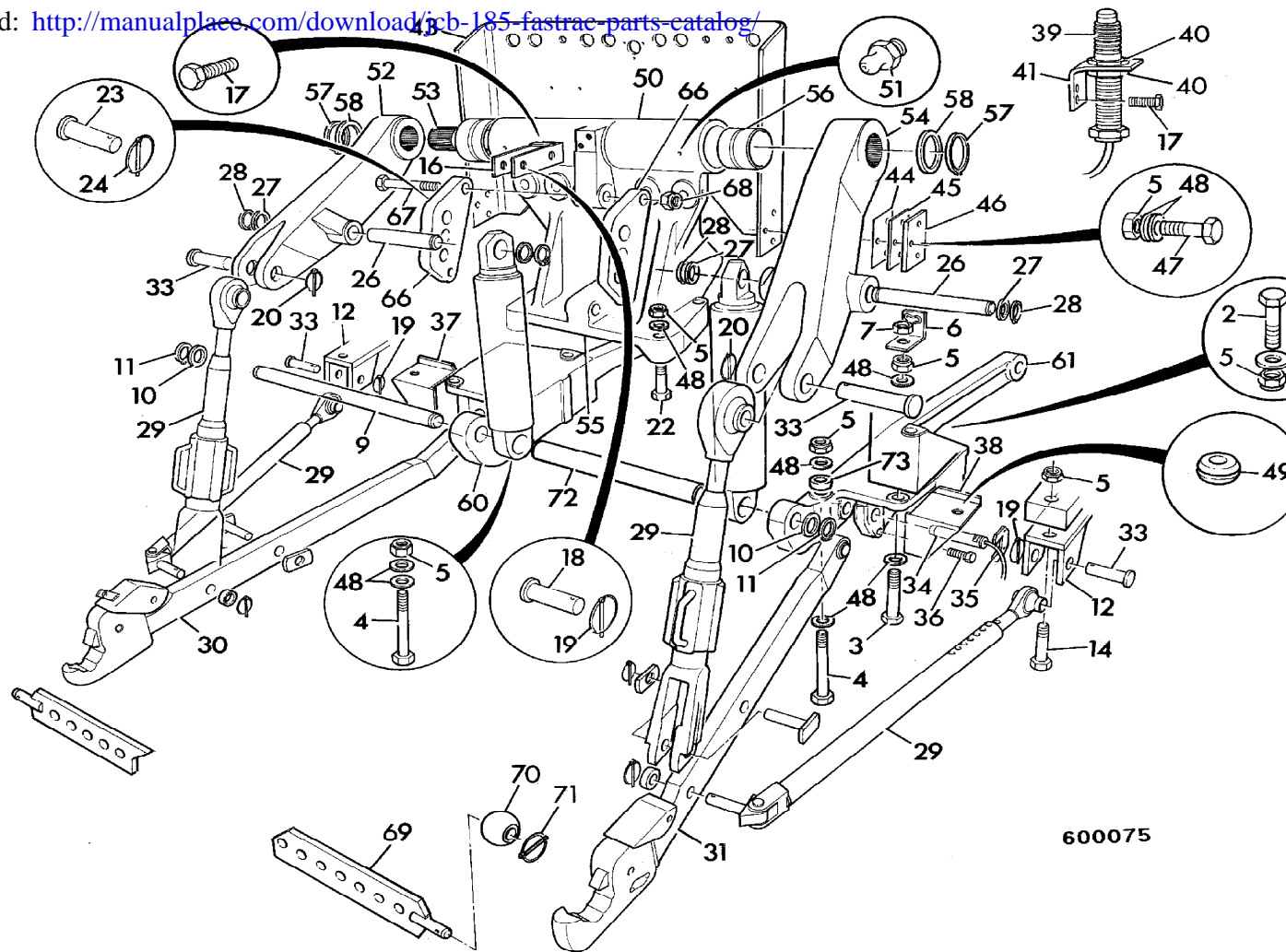
## Note 8

For 185 m/c's, use 477/00226 (L.H.) or 477/00227 with 3 off 477/01278 (item 73).

## Machine groups

Details

Machine group	From serial no.	To serial no.
CONTRACTOR 150T		
FASTRAC 125		
FASTRAC 135T		
FASTRAC 145T		
FASTRAC 155T		
FASTRAC 185Ti		
FASTRAC-155T		
FASTRAC-185Ti		



600075