



Trucks and Commercial Vehicles



6 TRAKKER EURO4/5

TRAKKER EURO4/5

6.1	<u>ECU PROGRAMMING</u>	191
6.1.1	<u>VCM PROGRAMMING: STANDARD SETTINGS</u>	192
6.1.2	<u>VCM PROGRAMMING: CUSTOMIZED SETTINGS</u>	197
6.1.3	<u>PROGRAMMAZIONE VCM: ADVANCED SETTINGS: PTO Mode</u>	199
6.1.4	<u>PROGRAMMAZIONE VCM: ADVANCED SETTINGS: BODYBUILDERS</u>	201
6.1.5	<u>EM PROGRAMMING: CHANGE THE CONFIGURATION MANUALLY</u>	202
6.1.6	<u>EM PROGRAMMING: CONDITIONS FOR PTO ACTIVATION</u>	203
6.1.7	<u>EM PROGRAMMING: SHUT OFF CONDITIONS</u>	206
6.1.8	<u>EM PROGRAMMING: PTO TIMEOUT</u>	209
6.1.9	<u>EUROTRONIC 2 PROGRAMMING: PROCEDURE 1: PTO</u>	211
6.1.10	<u>EUROTRONIC 2 PROGRAMMING: PROCEDURE 2: PROGRAMMING</u>	213
6.2	<u>WIRING DIAGRAMS AND JUNCTION CONNECTORS</u>	214
6.2.1	<u>WIRING DIAGRAMS</u>	214
6.2.2	<u>CONNECTORS</u>	215
6.3	<u>FAQ'S</u>	221

6.1 ECU PROGRAMMING

When a PTO is installed on a TRAKKER EURO4/5 the following control units must be programmed, using a diagnosis instrument:

1 . VCM

Program the PTO work mode in VCM.

A set Work Mode (MODE 0, MODE 1, MODE2 or MODE3) will be retrieved in VCM.

2 . EXPANSION MODULE (if present)

The expansion module control unit is used for the electrical management of PTO requests.

Thus the expansion module receives PTO activation requests directly from the dashboard switches, processes the requests and, on the basis of how it has been programmed, pilots the solenoid valve outputs for PTO activation.

3 . EUROTRONIC 2

With the Eurotronic2 gearbox the type of PTO to be used must be programmed in Change the Configuration:

PTO1 (Rear PTO) STATIONARY/NOT STATIONARY

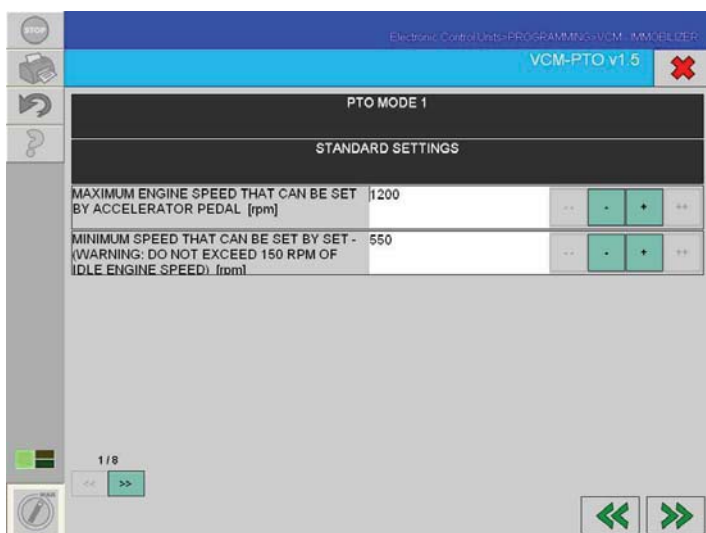
PTO2 (Side PTO) STATIONARY/NOT STATIONARY



Trucks and Commercial Vehicles

6.1.1 VCM PROGRAMMING: STANDARD SETTINGS

TRAKKER EURO4/5→ECU's Programming→VCM Programming→Standard Settings



MAXIMUM ENGINE SPEED THAT CAN BE SET BY ACCELERATOR PEDAL (RPM): The maximum engine speed obtainable in PTO mode can be set with the accelerator pedal.

MINIMUM SPEED THAT CAN BE SET BY SET -: The minimum engine speed obtainable in PTO mode can be set with the Cruise Control set- command. The value that can be set on this parameter must not be more than 150 revs greater than the engine idling speed.