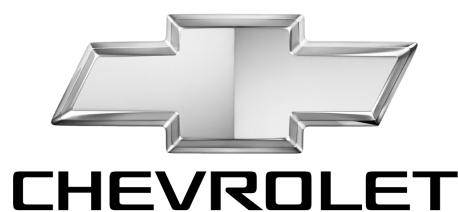


# WORKSHOP MANUAL

2007MY TF SERIES

## HEATING AND AIR CONDITIONING

SECTION 1



GMC



# ISUZU

ISUZU



Isuzu Motors Limited

Service Marketing Department



# SECTION 1

## HEATER AND AIR CONDITIONING

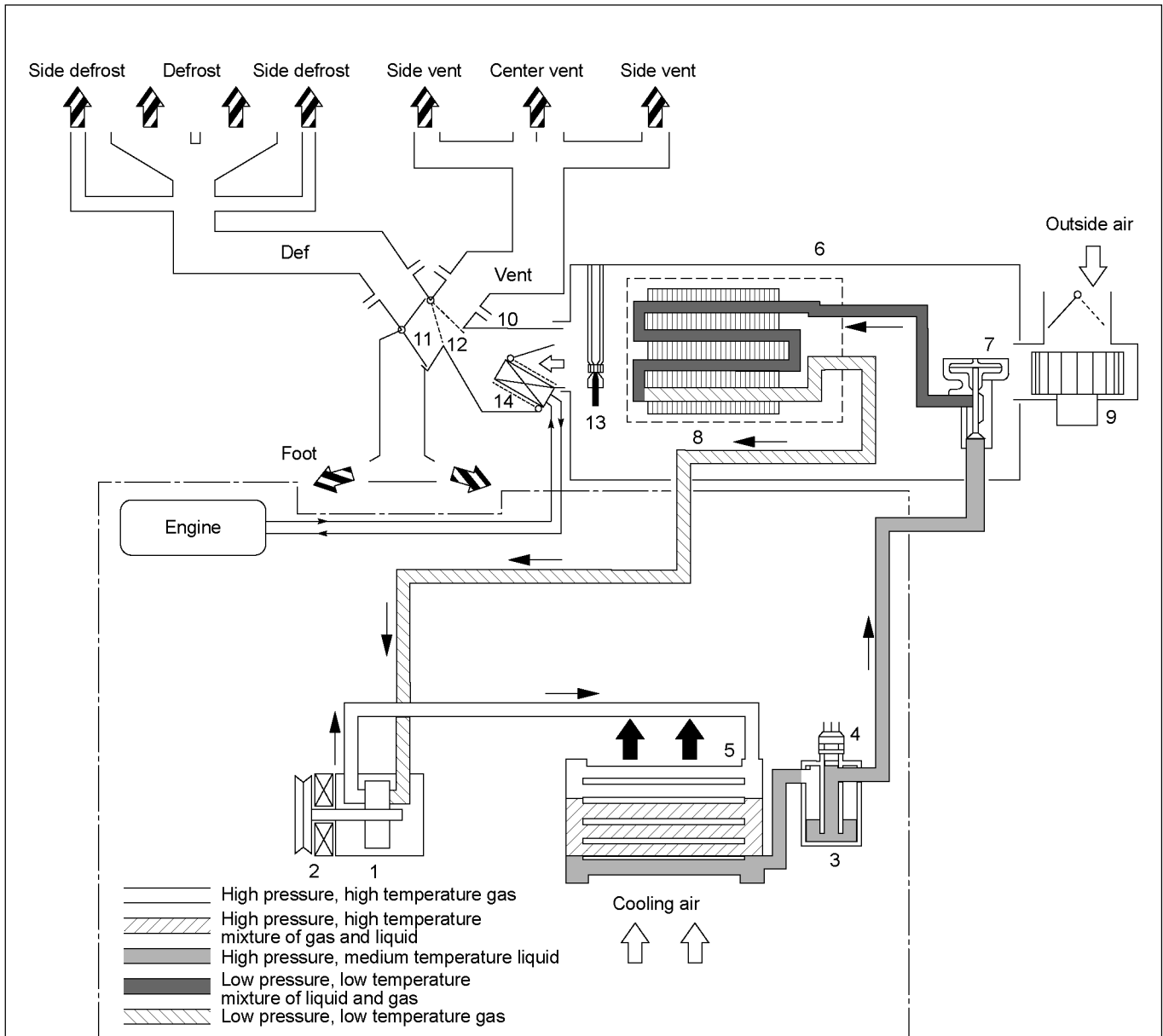
### TABLE OF CONTENTS

	PAGE
General Description .....	1- 3
Main Data and Specifications .....	1- 21
Special Parts Fixing Nuts and Bolts .....	1- 23
On-Vehicle Service .....	1- 30
Precautions For Replacement or repair of air conditioning parts .....	1- 30
Condenser .....	1- 40
Removal and Installation (4JH1-TC, 4JJ1-TC Standard Output) .....	1- 40
Removal and Installation (4JJ1-TC High Output, 4JK1-TC High Output, 4JA1-T) .....	1- 41
Removal and Installation (C24SE) .....	1- 42
Condenser Fan Motor .....	1- 43
Removal and Installation .....	1- 43
Receiver/drier .....	1- 44
Removal and Installation .....	1- 44
Compressor .....	1- 45
Removal and Installation (4JA1-T, 4JH1-TC) .....	1- 45
Removal and Installation (4JJ1-TC Standard Output, 4JJ1-TC High Output, 4JK1-TC High Output) .....	1- 47
Removal and Installation (C24SE) .....	1- 49
Disassembly .....	1- 55
Reassembly .....	1- 57
Heater Unit .....	1- 59
Removal and Installation .....	1- 59
Disassembly and Reassembly .....	1- 61
Vent Unit (Without Heater) .....	1- 62
Removal and Installation .....	1- 62
Disassembly and Reassembly .....	1- 64

	<b>PAGE</b>
<b>Evaporator (With A/C) .....</b>	<b>1- 65</b>
<b>Removal and Installation.....</b>	<b>1- 65</b>
<b>Disassembly and Reassembly.....</b>	<b>1- 66</b>
<b>Duct (Without A/C).....</b>	<b>1- 68</b>
<b>Removal and Installation.....</b>	<b>1- 68</b>
<b>Disassembly and Reassembly.....</b>	<b>1- 69</b>
<b>Blower Unit Assembly.....</b>	<b>1- 70</b>
<b>Removal and Installation.....</b>	<b>1- 70</b>
<b>Disassembly and Reassembly.....</b>	<b>1- 72</b>
<b>Defroster Nozzle and Vent Duct .....</b>	<b>1- 73</b>
<b>Removal and Installation.....</b>	<b>1- 73</b>
<b>Rear Heater Duct .....</b>	<b>1- 74</b>
<b>Removal and Installation.....</b>	<b>1- 74</b>
<b>Control Lever Assembly .....</b>	<b>1- 75</b>
<b>Removal and Installation.....</b>	<b>1- 75</b>
<b>Control Panel Illumination Bulb .....</b>	<b>1- 79</b>
<b>Removal and Installation.....</b>	<b>1- 79</b>
<b>Inspection and Repair .....</b>	<b>1- 81</b>
<b>Troubleshooting .....</b>	<b>1- 85</b>
<b>Special Service Tool.....</b>	<b>1-119</b>

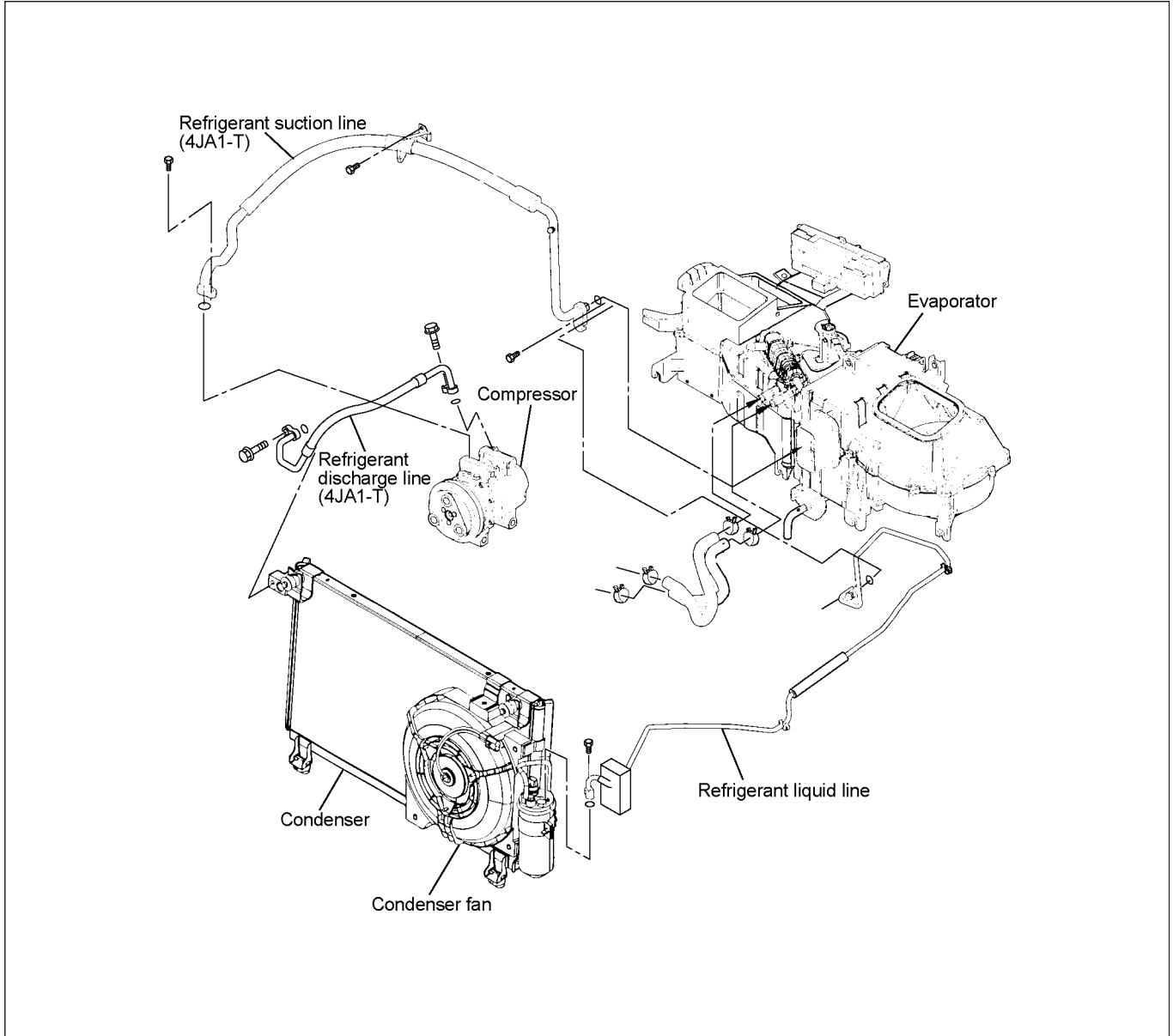
# GENERAL DESCRIPTION

## COOLING SYSTEM

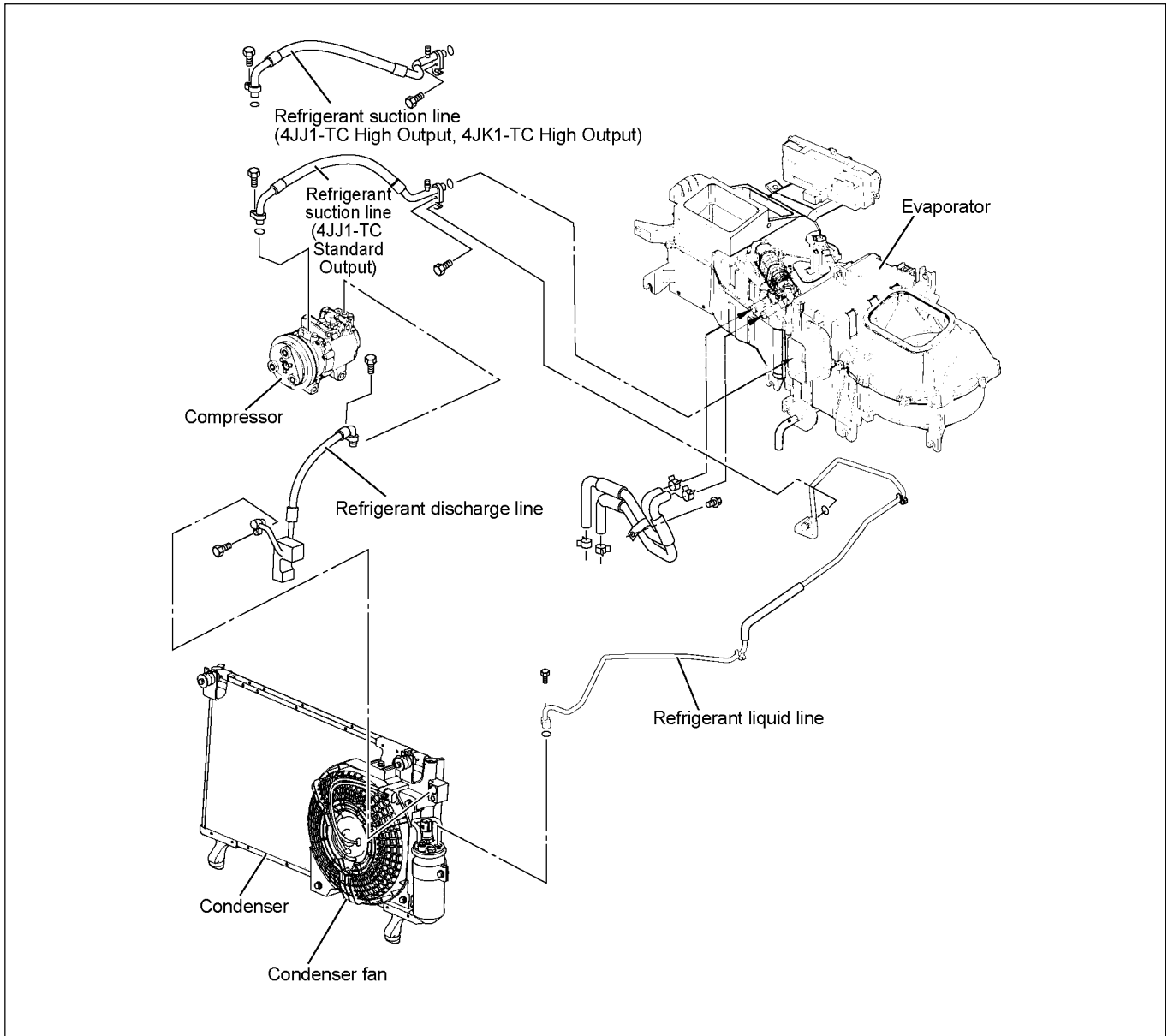


- |                           |                                  |
|---------------------------|----------------------------------|
| 1. Compressor             | 8. Evaporator core               |
| 2. Magnetic clutch        | 9. Blower motor                  |
| 3. Receiver/Drier         | 10. Heater unit                  |
| 4. Triple pressure switch | 11. Mode (DEF/FOOT) control door |
| 5. Condenser              | 12. Mode (VENT) control door     |
| 6. Evaporator assembly    | 13. Electronic thermostat        |
| 7. Expansion valve        | 14. Heater core                  |

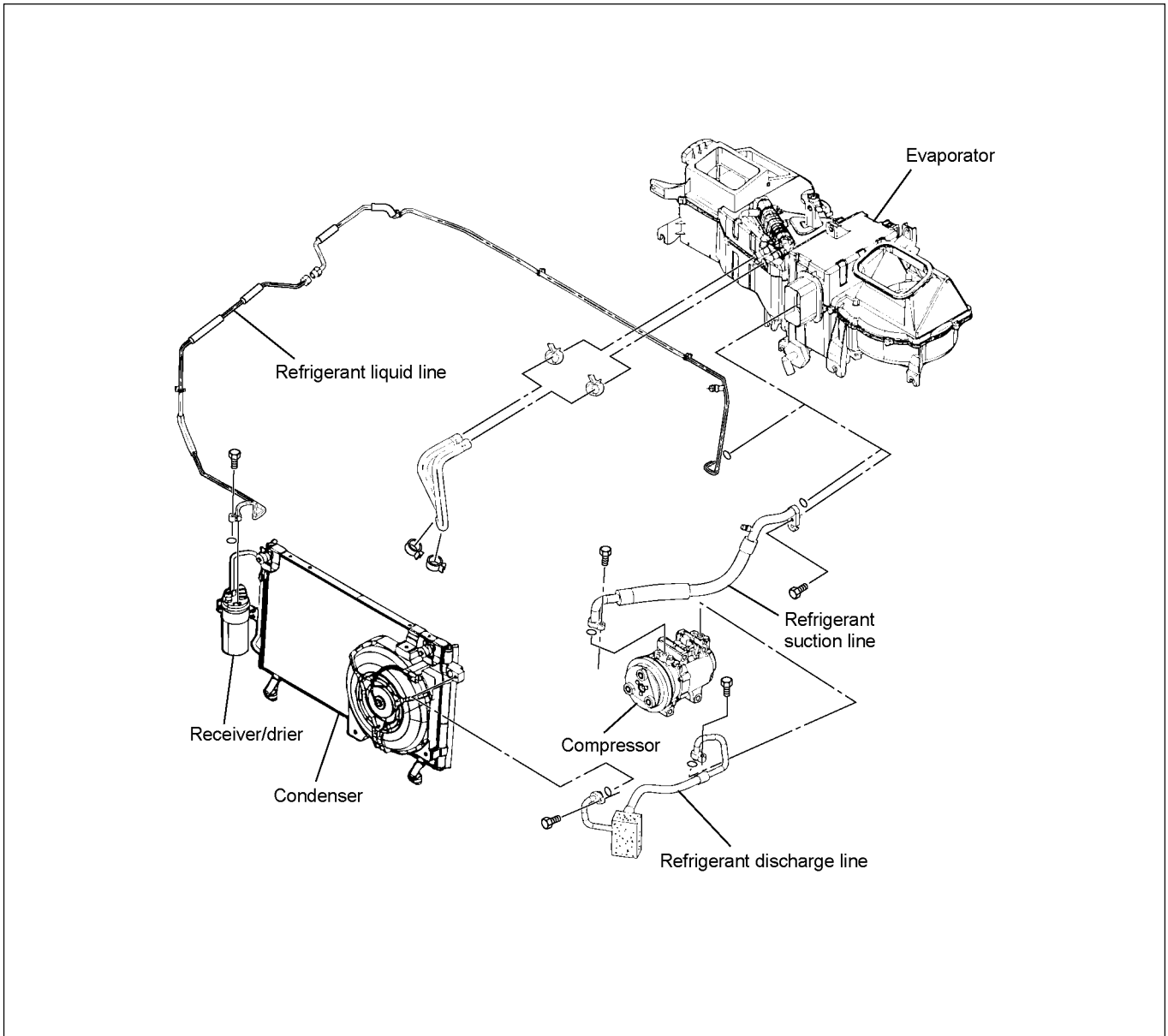
**COMPONENTS (CHASSIS SIDE)  
(4JA1-T RHD MODEL)**



**(4JJ1-TC Standard Output, 4JJ1-TC High Output, 4JK1-TC High Output RHD MODEL)**

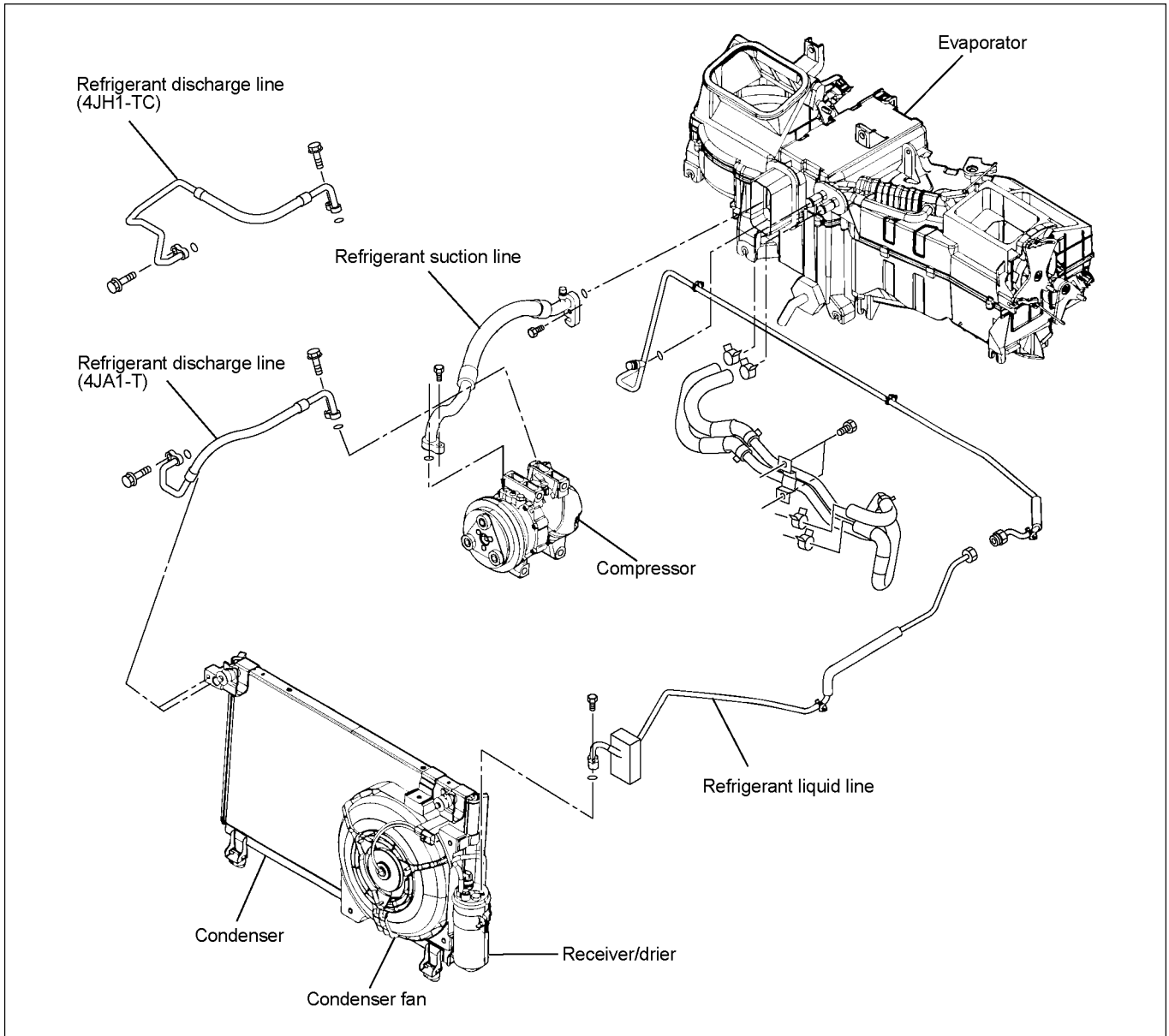


(C24SE RHD MODEL)



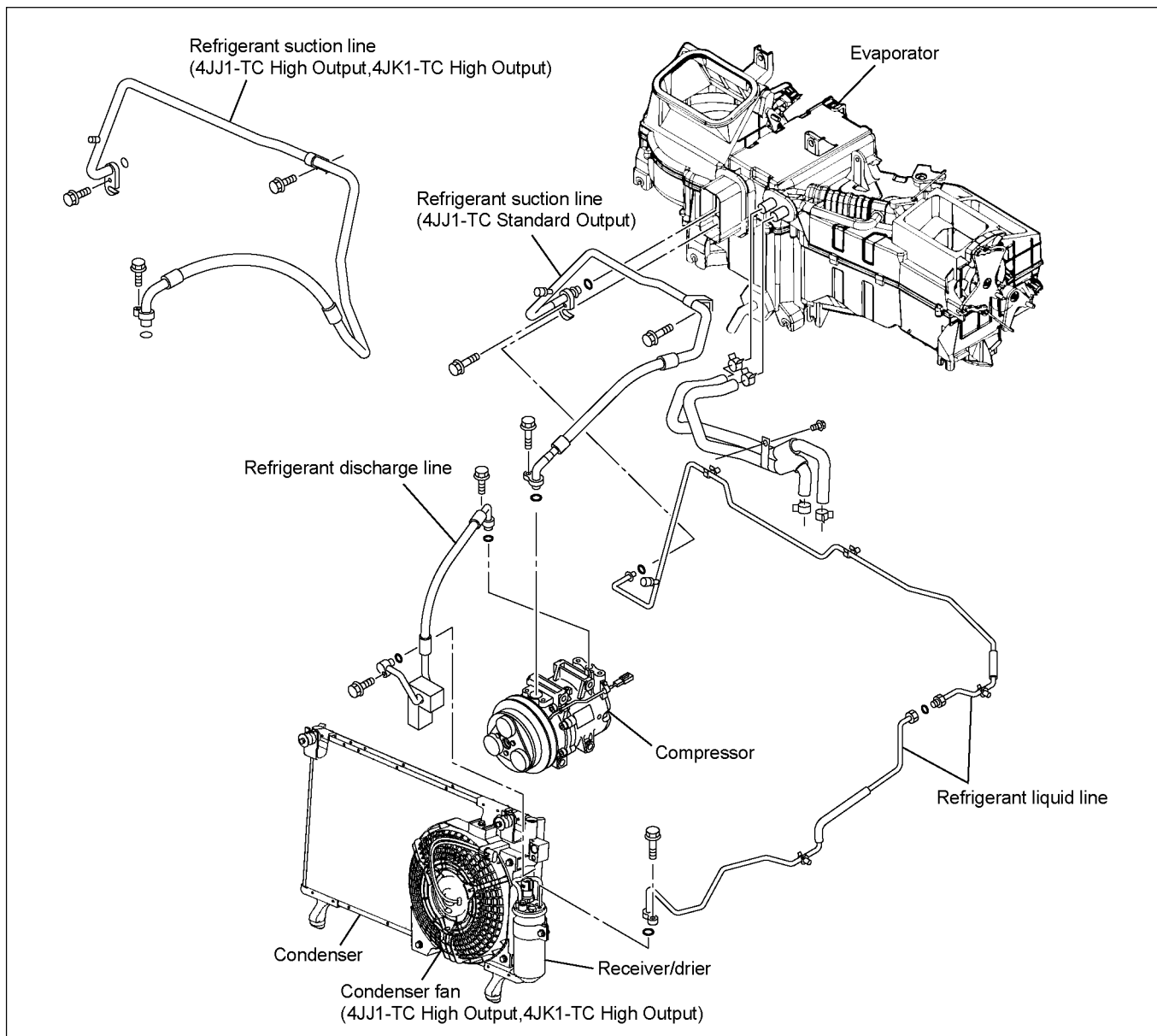


(4JA1-T, 4JH1-TC LHD MODEL)



1-8 HEATER AND AIR CONDITIONING

(4JJ1-TC Standard Output, 4JJ1-TC High Output, 4JK1-TC High Output LHD MODEL)



RTW710LF002301