

## Directions for use of Parts Catalogue

### 1. Applicable model of machines

All component and option parts used for TMG18 tractors are listed in this parts catalogue.

NOTES : H.....HST

S.....INDEPENDENT PTO CLUTCH

V.....AUX VALVE

M.....MID PTO

U.....POWER STEERING

E42.....EUROPE AND OCEANIA WITH TURF TYPE

### 2. Explanation for head paragraph

KEY	PART CODE	DESCRIPTION	QTY	TYPE OF MODEL						I T C	C O L	G R P	REMARKS
				TF15	TF17	TF19							
126	1614-508-200-00	FILTER(SUCTION) ASSY	1		*							4E	
127	V721-103-103-50	O-RING	1		*								
128	1614-508-260-00	FILTER(SUCTION) ASSY	1		*	981- -1799							
129	1614-508-262-00	FILTER(LH)	1	*	*	*							FIG. 164
		ASSY	1	*	*	*						4E	A
			1	*	*	*							
			1			1- -1999				3			
			1			*						1	
			1			*						4E	A

- ① KEY shows the location of parts diagramed in the illustration.
- ② Parts numbers begin with `V` and `W` are standard parts of the market.
- ③ `LH` and `RH` on the parts name are described against the moving direction of the machine or are described on the condition how to install parts on the machines.
- ④ QTY shows the number of parts to be used for one unit of machine.  
 `M` is indicated for parts supplied by a meter long.  
 `ℓ` is indicated for parts supplied by liter.  
 `AR` is indicated for parts need to be adjusted or regulated.
- ⑤ The following symbol classifies parts to be used for machines.  
 `\*` means standard parts.

`T` shows that the parts can be installed as optional parts.

`R` shows that the parts can be used as applicable parts to replace originally equipped parts.

- ⑥ Serial number : upper row shows the serial number for the first product and lower row for the last product.

Example : Serial no. 1 through to serial no. 1999.

- ⑦ ITC : Interchangeability

`1`...OLD ← NEW

New parts can be used in place of the old parts.

`2`...OLD → NEW

Old parts can be used in place of the new parts.

`3`...OLD →← NEW

Old parts and new parts can not be replaced each other.

- ⑧ COL : Color code

Color is signified with color code number for colored parts.

Please see the color list shown in the next page.

- ⑨ GRP : Parts shown in this column can be replaced by SET parts.

Exsample : Parts marked Ⓐ can be replaced by parts marked Ⓑ, and Ⓓ for Ⓒ, so the rest follow in the same alphabetical order.

- ⑩ Remarks

\* Other maker's part code number is shown in this column.

\* When Fig. No. is shown in the Remark column of SET parts or ASSY parts, each of their component parts are listed in said Fig. No.

### 3. Color :

The following colors are used for color parts.

COLOR CODE	COLOR	SPRAY TYPE CODE NUMBER	PAINTS 4K DRUM	PAINTS 16K DRUM
4 G	CRYSTAL BLUE	1300-957-001-10	1300-957-003-00	1300-957-004-00
5 I	SUNSET GRAY	1300-959-001-10	1300-959-003-00	1300-959-004-00
6 G	SUMMER WHITE	1300-958-001-10	1300-958-003-00	1300-958-004-00
7 F	MIRROR BLACK	1300-954-001-10	1300-954-003-00	1300-954-004-00
8 F	BRILLIANT BROWN METALLIC	1300-972-001-10	1300-972-003-00	1300-972-004-00

NOTE : Color code is signified only for the parts assigned by the maker as color parts.

#### 4. Serial Numbers:

- 1) For engines serial number is stamped on CYLINDER BLOCK ASSY.  
Please see Fig.No. 5-1.
- 2) For chassies serial number is shown on the LABEL.  
Please see



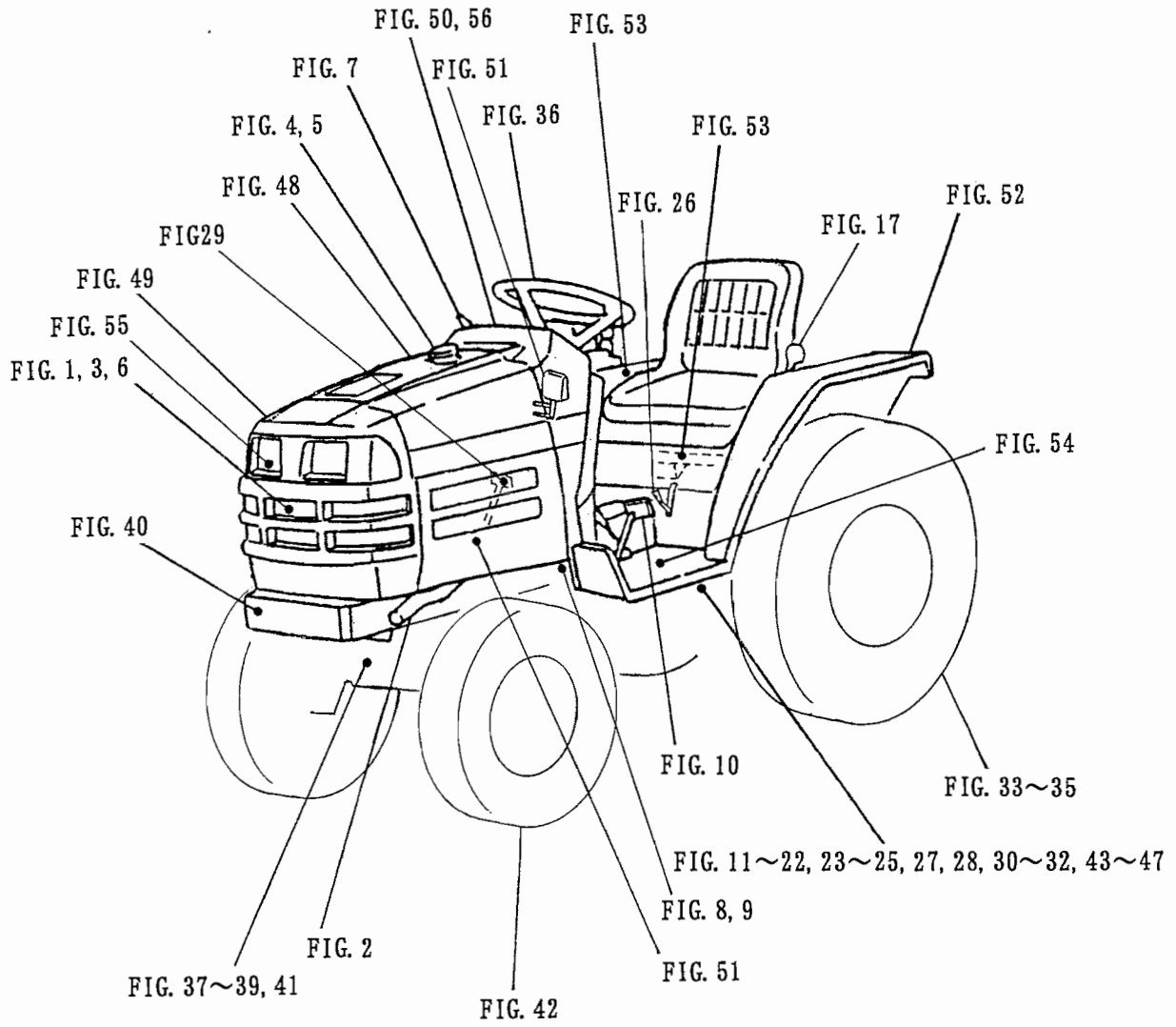
#### 5. Parts Order

- 1) Parts numbers listed in the parts catalogue are all registered in "ISEKI on-line computer".
- 2) When you order parts, please make sure of correct numbers.
- 3) When substitute parts is available, the part number ordered will be automatically turned to a new part number.
- 4) Please be sure to use "ISEKI GENUINE PARTS".

Any other similar parts other than ISEKI parts when used may cause a trouble that makes us unable to repair or guarantee the warrant.







# CONTENTS

## TMG18-EXCEPT S TYPE ENGINE (E393-G)

CYLINDER HEAD .....	Fig. 1
CYLINDER HEAD COVER .....	Fig. 2
INLET MANIFOLD .....	Fig. 3
EXHAUST MANIFOLD .....	Fig. 4
CYLINDER BLOCK .....	Fig. 5
BEARING/UNDER SIZE (OPTION).....	Fig. 6
OIL PAN.....	Fig. 7
REAR PLATE .....	Fig. 8
TIMING GEAR CASE .....	Fig. 9
HANGER .....	Fig. 10
VALVE .....	Fig. 11
CAM SHAFT .....	Fig. 12
PISTON .....	Fig. 13
PISTON/OVER SIZE (OPTION) .....	Fig. 14
CRANK SHAFT .....	Fig. 15
OIL PUMP .....	Fig. 16
WATER PUMP .....	Fig. 17
COOLING FAN.....	Fig. 18
INJECTION NOZZLE .....	Fig. 19
INJECTION PUMP .....	Fig. 20
FUEL PIPE .....	Fig. 21
ELECTRIC (1) .....	Fig. 22
ELECTRIC (2) .....	Fig. 23
COMPONENT PARTS FOR 6215 - 300 - 037 - 00 ON Fig.19 .....	Fig. 24
COMPONENT PARTS FOR 6215 - 600 - 109 - 10 ON Fig.20 .....	Fig. 25
COMPONENT PARTS FOR 6281 - 100 - 005 - 00 ON Fig.22 .....	Fig. 26
COMPONENT PARTS FOR 6281 - 200 - 005 - 00 ON Fig.22 .....	Fig. 27

# CONTENTS

## TMG18-S TYPE ENGINE (E393-G01)

CYLINDER HEAD .....	Fig. 1
CYLINDER HEAD COVER .....	Fig. 2
INLET MANIFOLD .....	Fig. 3
EXHAUST MANIFOLD .....	Fig. 4
CYLINDER BLOCK .....	Fig. 5
BEARING/UNDER SIZE (OPTION).....	Fig. 6
OIL PAN.....	Fig. 7
REAR PLATE .....	Fig. 8
TIMING GEAR CASE .....	Fig. 9
HANGER .....	Fig. 10
VALVE .....	Fig. 11
CAM SHAFT .....	Fig. 12
PISTON .....	Fig. 13
PISTON/OVER SIZE (OPTION) .....	Fig. 14
CRANK SHAFT .....	Fig. 15
OIL PUMP .....	Fig. 16
WATER PUMP .....	Fig. 17
COOLING FAN.....	Fig. 18
INJECTION NOZZLE .....	Fig. 19
INJECTION PUMP .....	Fig. 20
FUEL PIPE .....	Fig. 21
ELECTRIC (1) .....	Fig. 22
ELECTRIC (2) .....	Fig. 23
COMPONENT PARTS FOR 6215 - 300 - 037 - 00 ON Fig.19 .....	Fig. 24
COMPONENT PARTS FOR 6215 - 600 - 109 - 10 ON Fig.20 .....	Fig. 25
COMPONENT PARTS FOR 6281 - 100 - 005 - 00 ON Fig.22 .....	Fig. 26
COMPONENT PARTS FOR 6281 - 200 - 005 - 00 ON Fig.22 .....	Fig. 27



# CONTENTS

## CHASSIS

RADIATOR SYSTEM .....	Fig. 1
MUFFLER SYSTEM .....	Fig. 2
AIR CLEANER SYSTEM .....	Fig. 3
FILTER SYSTEM .....	Fig. 4
FUEL TANK SYSTEM .....	Fig. 5
BATTERY SYSTEM .....	Fig. 6
ACCELERATOR SYSTEM .....	Fig. 7
CLUTCH SYSTEM (EXCEPT S TYPE) .....	Fig. 8
CLUTCH SYSTEM (S TYPE) .....	Fig. 9
CLUTCH PEDAL SYSTEM (EXCEPT S TYPE) .....	Fig. 10
TRANSMISSION CASE SYSTEM (EXCEPT S TYPE) .....	Fig. 11
TRANSMISSION CASE SYSTEM (S TYPE) .....	Fig. 12
HST SYSTEM .....	Fig. 13
DRIVE GEAR SYSTEM (EXCEPT S TYPE) .....	Fig. 14
DRIVE GEAR SYSTEM (S TYPE) .....	Fig. 15
2WD GEAR SYSTEM .....	Fig. 16
SUB LEVER SYSTEM .....	Fig. 17
SUB CHANGE SYSTEM .....	Fig. 18
PTO GEAR SYSTEM (EXCEPT S TYPE) .....	Fig. 19
PTO GEAR SYSTEM (S TYPE) .....	Fig. 20
PTO SHAFT SYSTEM (EXCEPT S TYPE) .....	Fig. 21
PTO SHAFT SYSTEM (S TYPE) .....	Fig. 22
PTO LEVER SYSTEM (EXCEPT S TYPE) .....	Fig. 23
PTO LEVER SYSTEM (S TYPE) .....	Fig. 24
MID PTO SYSTEM .....	Fig. 25
MID PTO LEVER SYSTEM .....	Fig. 26
LINK SYSTEM (EXCEPT S TYPE) .....	Fig. 27
LINK SYSTEM (S TYPE) .....	Fig. 28
PEDAL SYSTEM .....	Fig. 29
PIPING SYSTEM .....	Fig. 30

DIFFERENTIAL GEAR SYSTEM .....	Fig. 31
REAR AXLE SYSTEM .....	Fig. 32
WHEEL SHAFT AND REAR WHEEL (TURF) SYSTEM .....	Fig. 33
HST BRAKE SYSTEM .....	Fig. 34
BRAKE SYSTEM .....	Fig. 35
STEERING SYSTEM .....	Fig. 36
CYLINDER SYSTEM .....	Fig. 37
PIPING SYSTEM (EXCEPT S TYPE) .....	Fig. 38
PIPING SYSTEM (S TYPE) .....	Fig. 39
AXLE BRACKET AND BUMPER SYSTEM .....	Fig. 40
2WD AXLE SYSTEM .....	Fig. 41
FRONT TIRE SYSTEM .....	Fig. 42
PLATE CASE SYSTEM (EXCEPT V TYPE) .....	Fig. 43
PLATE CASE SYSTEM (V TYPE) .....	Fig. 44
VALVE SYSTEM (S TYPE) .....	Fig. 45
STACK VALVE SYSTEM (V TYPE) .....	Fig. 46
MAIN PIPING SYSTEM .....	Fig. 47
HOOD SYSTEM .....	Fig. 48
GRILLE SYSTEM .....	Fig. 49
DASH COVER SYSTEM .....	Fig. 50
SIDE COVER AND MIRROR SYSTEM .....	Fig. 51
FENDER SYSTEM .....	Fig. 52
LEVER GUIDE AND SEAT BRACKET SYSTEM .....	Fig. 53
STEP SYSTEM .....	Fig. 54
LAMP SYSTEM .....	Fig. 55
PANEL SYSTEM .....	Fig. 56
SWITCH SYSTEM .....	Fig. 57
SWITCH SYSTEM (EXCEPT S,V TYPE) .....	Fig. 58
SWITCH SYSTEM (V TYPE EXCEPT S) .....	Fig. 59
SWITCH SYSTEM (S TYPE EXCEPT V) .....	Fig. 60
SWITCH SYSTEM (SV TYPE) .....	Fig. 61
HARNESS SYSTEM (S,V TYPE) .....	Fig. 62
HARNESS SYSTEM (EXCEPT S,V TYPE) .....	Fig. 63
ORNAMENT,LABEL .....	Fig. 64

LABEL (CONTROL) (EXCEPT S,V TYPE) ..... Fig. 65  
 LABEL (CONTROL) (V TYPE EXCEPT S) ..... Fig. 66  
 LABEL (CONTROL) (S TYPE) ..... Fig. 67  
 LABEL (ENGLISH) (OPTION) ..... Fig. 68  
 LABEL (FRENCH) (OPTION) ..... Fig. 69  
 LABEL (GERMAN) (OPTION) ..... Fig. 70  
 LABEL (PORTUGAL) (OPTION) ..... Fig. 71  
 LABEL (E40A) (OPTION) ..... Fig. 72  
 LABEL (E40T) (OPTION) ..... Fig. 73  
 LABEL (DUTCH) (OPTION) ..... Fig. 74  
 LABEL (E40V) (OPTION) ..... Fig. 75  
 TOOL ..... Fig. 76

COMPONENT PARTS

COMPONENT PARTS FOR K200 - 053 - 000 - 00 ON ..... Fig. 45 ..... Fig. 77  
 COMPONENT PARTS FOR K233 - 003 - 000 - 00 ON ..... Fig. 38 ..... Fig. 78  
 COMPONENT PARTS FOR K233 - 006 - 000 - 00 ON ..... Fig. 39 ..... Fig. 79  
 COMPONENT PARTS FOR 1688 - 211 - 500 - 00 ON ..... Fig. 20 ..... Fig. 80

WIRING DIAGRAM (E4) (1)  
 WIRING DIAGRAM (E4) (2)  
 WIRING DIAGRAM (E4) (3)  
 WIRING DIAGRAM (E4/G/SV) (1)  
 WIRING DIAGRAM (E4/G/SV) (2)  
 WIRING DIAGRAM (E4/G/SV) (3)

**ENGINE**  
**E393 - G...TMG18**  
**(EXCEPT S )**



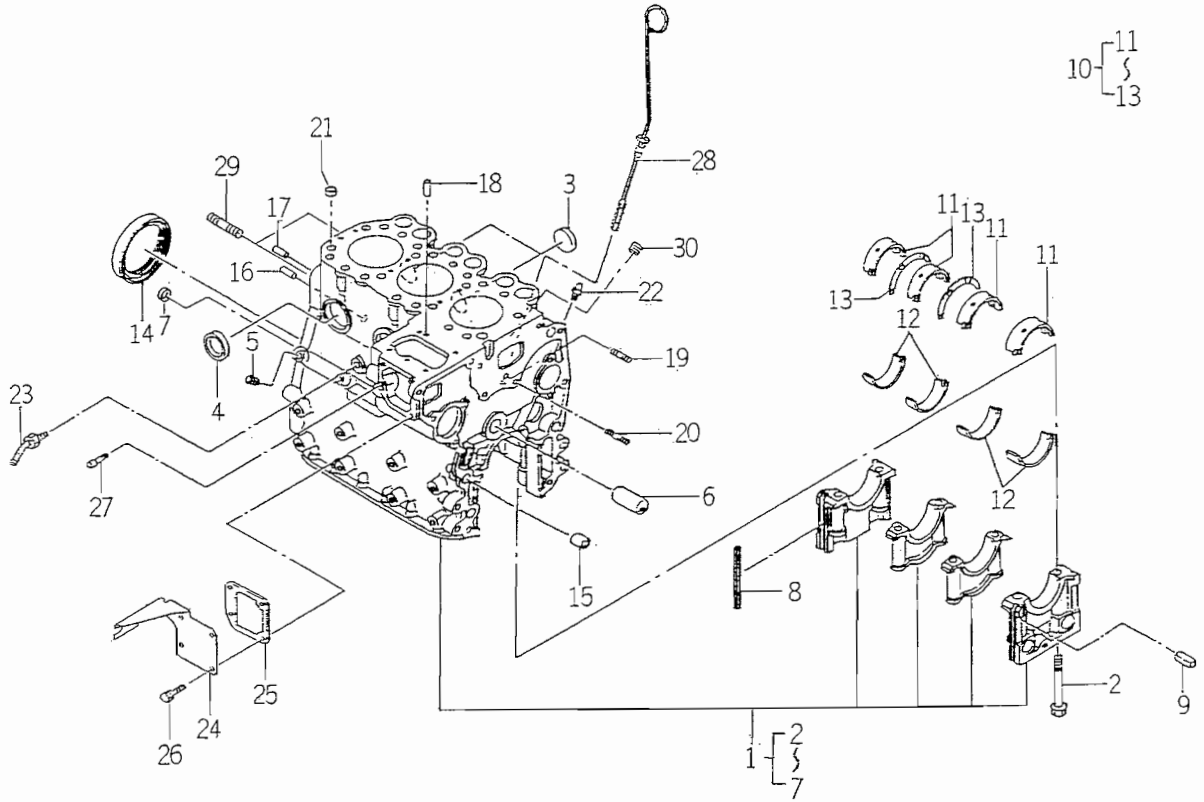








FIG. 5 CYLINDER BLOCK



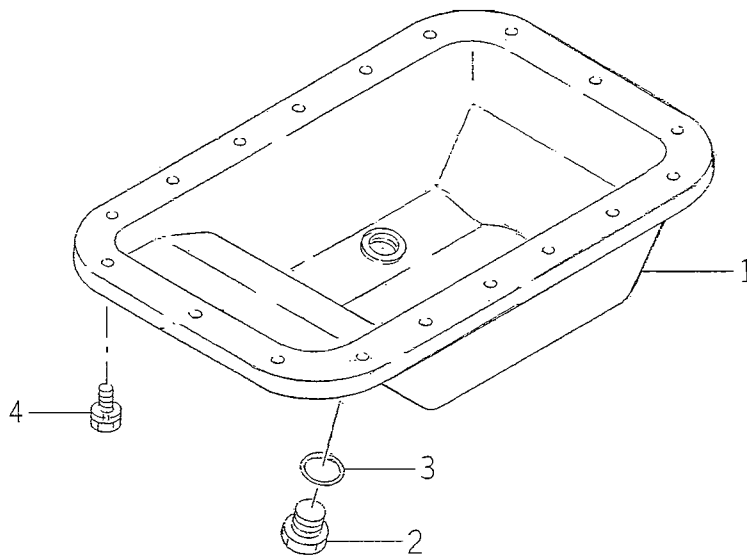
6003-201Y

KEY	PART CODE	DESCRIPTION	QTY	TYPE OF MODEL		I T C	C O L	G R P	REMARKS.
				E393G					
1	6211 - 210 - 050 - 10	CYLINDERBLOCK ASSY	1	*					
2	6209 - 000 - 004 - 10	BOLT	8	*					
3	6209 - 610 - 001 - 00	CAP,SEALING	2	*					
4	6911 - 219 - 195 - 00	CAP,SEALING	4	*					
5	6509 - 605 - 019 - 10	PLUG	3	*					
6	6212 - 531 - 005 - 10	PIN/IDLEGEAR	1	*					
7	6911 - 129 - 083 - 00	CAP,SEALING	1	*					
8	6211 - 258 - 001 - 00	SEAL,BEARING CAP	4	*					
9	6211 - 258 - 002 - 00	SEAL,BEARING CAP/7	2	*					
10	6211 - 510 - 001 - 00	METAL,CRANK SET	1	*					
11	6211 - 511 - 003 - 00	BEARING/CRANK/UPPER	4	*					
12	6211 - 511 - 004 - 00	BEARING/CRANK/LOWER	4	*					
13	6211 - 599 - 001 - 10	BEARING,THRUST CRANK	2	*					
14	6209 - 625 - 001 - 00	SEAL,OIL	1	*					
15	6209 - 749 - 001 - 10	PIN,TUBE	2	*					
16	6908 - 160 - 816 - 00	PIN	1	*					
17	V523 - 100 - 802 - 40	PIN	1	*					
18	6908 - 160 - 510 - 00	PIN	2	*					
19	6904 - 110 - 818 - 00	STUD	1	*					
20	6904 - 110 - 840 - 00	STUD/M8X40	1	*					
21	6294 - 453 - 002 - 00	DOWEL	2	*					
22	6909 - 902 - 299 - 00	NIPPLE	1	*					
23	6213 - 721 - 007 - 00	PIPE/WATERDRAIN	1	*					
24	6211 - 291 - 016 - 00	COVER/INJECTIONPUMP	1	*					
25	6211 - 292 - 001 - 20	GASKET/COVER	1	*					





FIG. 7 OIL PAN



6004-210

KEY	PART CODE	DESCRIPTION	QTY	TYPE OF MODEL		I T C	C O L	G R P	REMARKS
				E393G					
1	6211 - 361 - 010 - 10	PAN,OIL COMP	1	*					
2	3625 - 301 - 002 - 00	PLUG (M14X15)	1	*					
3	V720 - 102 - 401 - 80	O - RING/P18	1	*					
4	6901 - 910 - 612 - 00	BOLT,SEMS/M6X12	18	*					