

Directions for use of Parts Catalogue

1. Applicable model of machines

All component and option parts used for TK538H tractors are listed in this parts catalogue.

1) MODEL TYPE

F..... 4WD

H..... HST.

S..... POWER STEERING & INDEPENDENT PTO

C..... CABIN

R..... ROPS

2) AREA CODE

E4..... EUROPE

2. Explanation for head paragraph

KEY	PART CODE	DESCRIPTION	SPC	TYPE OF MODEL						I T C	C O L	G R P	REMARKS
				SSM48M	SSM48F	SSM48G	SRM48M	SRM48F	SRM48G				
1	8595-211-001-20	CASE/UPPER	*										
1A	8657-201-081-00	CASE/UPPER	*				1						
2	8595-211-002-10	CASE/LOWER	*				1						
3	V528-100-801-80	PIN	*										
4	V211-260-803-00	BOLT, SEMS	*										

- ① KEY shows the location of parts diagramed in the illustration.
- ② Parts numbers begin with `V` and `W` are standard parts of the market.
- ③ `LH` and `RH` on the parts name are described against the moving direction of the machine or are described on the condition how to install parts on the machines.
- ④ SPC : The following symbol classifies parts to be used for machines.
 - `*` means standard parts.
 - `T` shows that the parts can be installed as optional parts.
 - `R` shows that the parts can be used as applicable parts to replace originally equipped parts.

- ⑤ Upper column : QTY shows the number of parts to be used for one unit of machine.

˘M˘ is indicated for parts supplied by a meter long.

˘ℓ˘ is indicated for parts supplied by liter.

˘AR˘ is indicated for parts need to be adjusted or regulated.

Lower column : serial number

—229 means serial number up to 229.

230— means serial number 230 and after.

- ⑥ ITC : Interchangeability

˘1˘...OLD ← NEW

New parts can be used in place of the old parts.

˘2˘...OLD → NEW

Old parts can be used in place of the new parts.

˘3˘...OLD →← NEW

Old parts and new parts can not be replaced each other.

- ⑦ COL : Color code

Color is signified with color code number for colored parts.

Please see the color list shown in the next page.

- ⑧ GRP : Parts shown in this column can be replaced by SET parts.

Example : Parts marked (A) can be replaced by parts marked (B), and (D) for

(C), so the rest follow in the same alphabetical order.

- ⑨ Remarks

* Other maker's part code number is shown in this column.

* When Fig. No. is shown in the Remark column of SET parts or ASSY parts, each of their component parts are listed in said Fig. No.

3. Color :

The following colors are used color parts.

COLOR CODE	COLOR	SPRAY TYPE CODE NUMBER	PAINTS 4K DRUM	PAINTS 16K DRUM
4 G	CRYSTAL BLUE	1300-957-001-10	1300-957-003-00	1300-957-004-00
5 I	SUNSET GRAY	1300-959-001-10	1300-959-003-00	1300-959-004-00
6 G	SUMMER WHITE	1300-958-001-10	1300-958-003-00	1300-958-004-00
7 F	MIRROR BLACK	1300-954-001-10	1300-954-003-00	1300-954-004-00
8 E	SILVER MIST	1300-968-001-10	1300-968-003-00	1300-968-004-00
8 F	BRILLIANT BROWN METALLIC	1300-972-001-10	1300-972-003-00	—————

NOTE : Color code is signified only for the parts assigned by the maker as color parts.

4. Serial Numbers :

- 1) For engines serial number is stamped on CYLINDER BLOCK ASSY.
Please see Fig. No. 6-1.
- 2) For chassies serial number is shown on the LABEL.
Please see

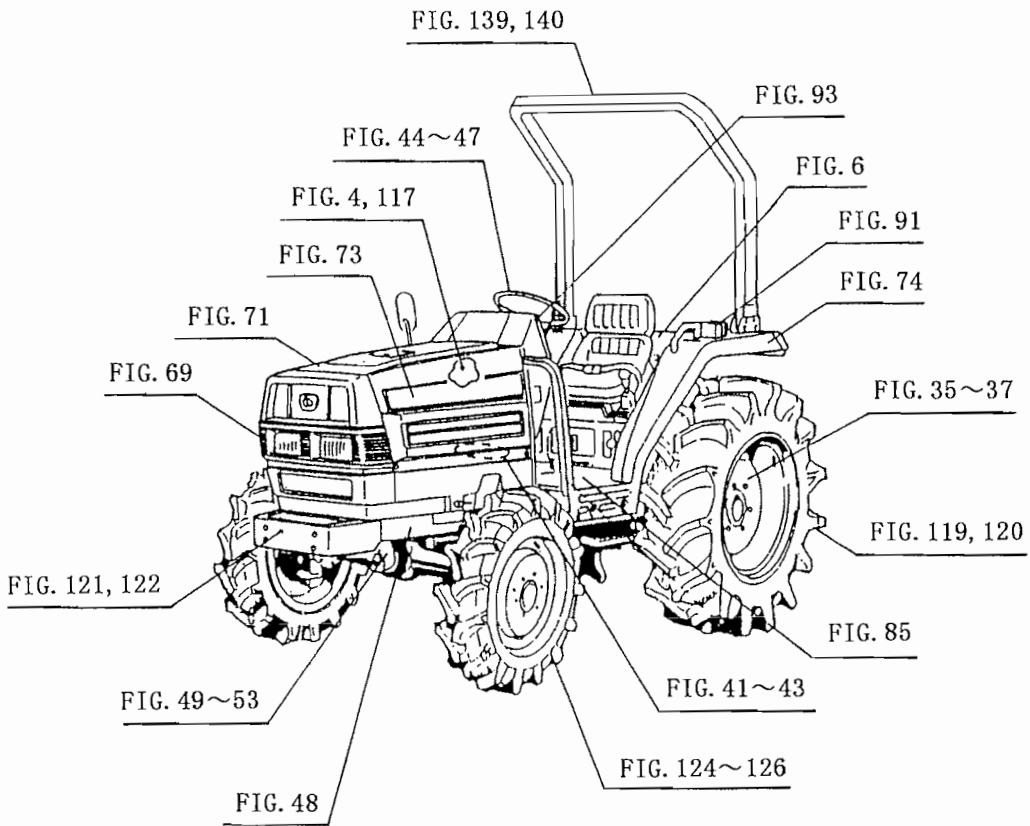
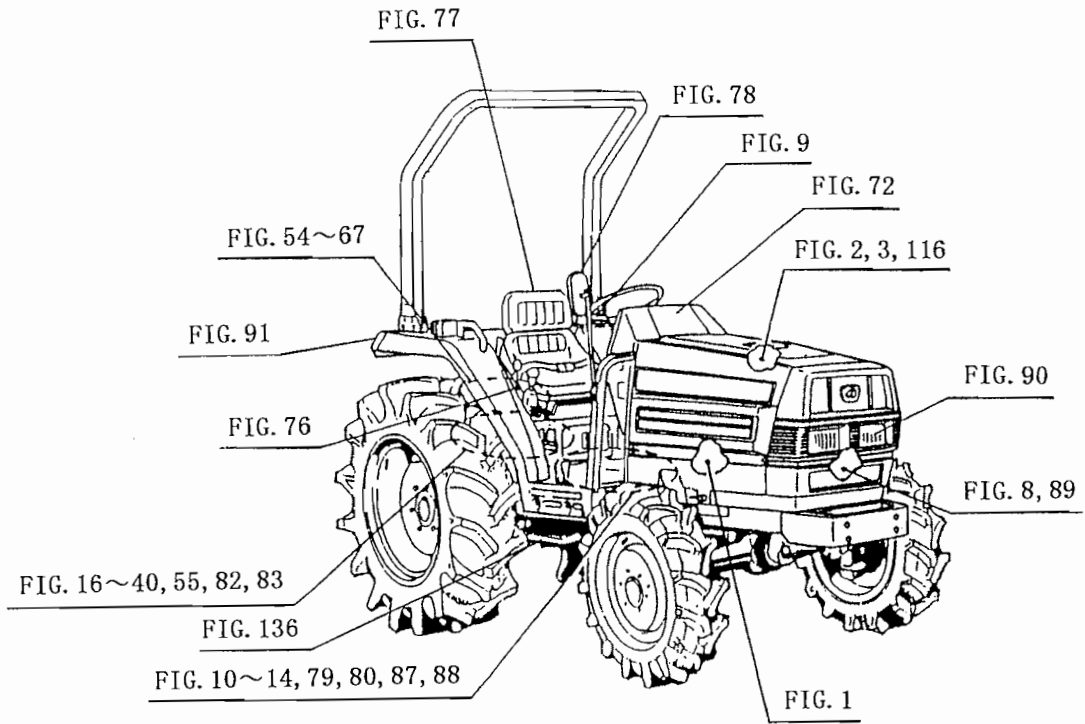


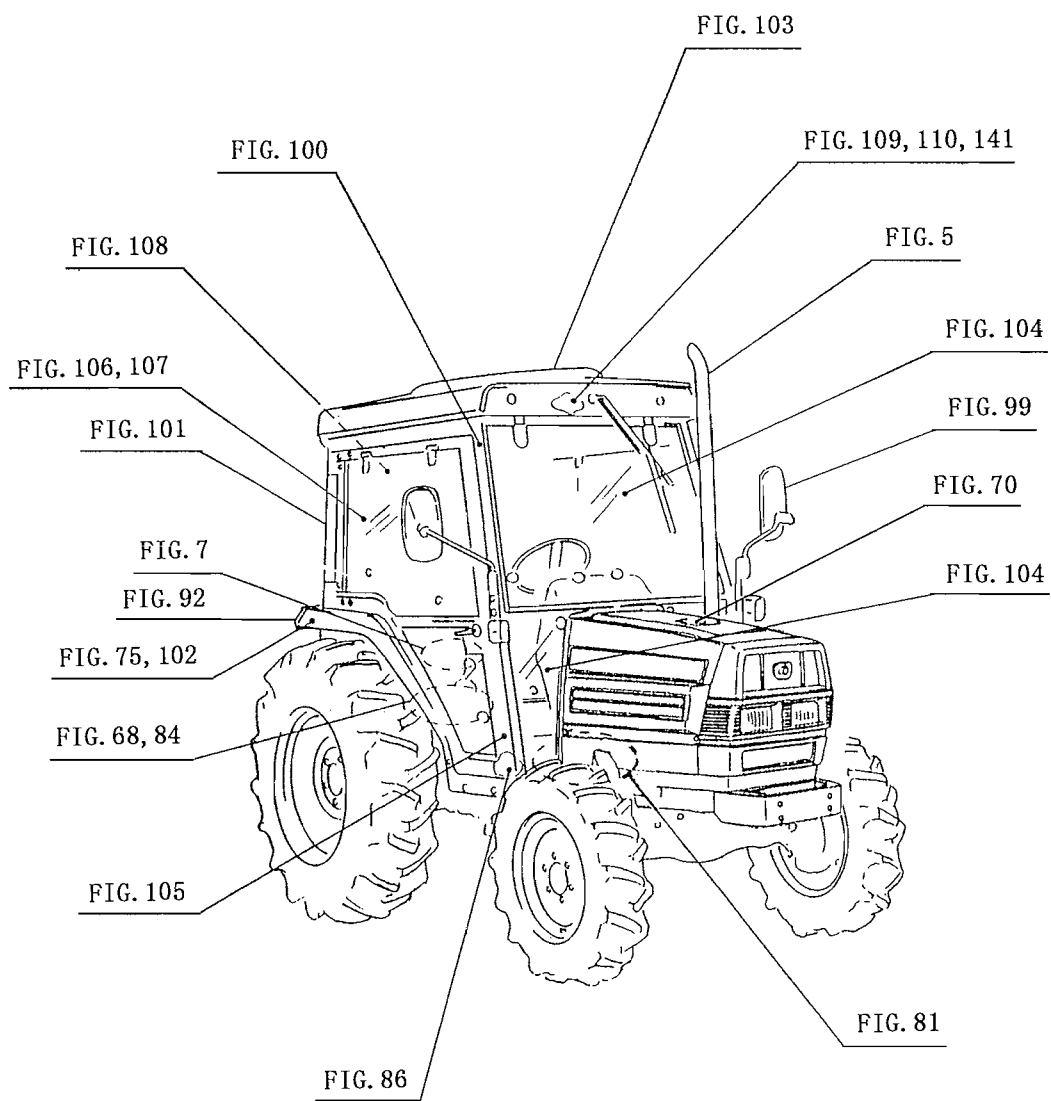
5. Parts Order

- 1) Parts numbers listed in the parts catalogue are all registered in “ISEKI on-line computer”.
 - 2) When you order parts, please make sure of correct numbers.
 - 3) When substitute parts is available, the part number ordered will be automatically turned to a new part number.
 - 4) Please be sure to use “ISEKI GENUINE PARTS”.
- Any other similar parts other than ISEKI parts when used may cause a trouble that makes us unable to repair or guarantee the warrant.

P. 4 *** STRUCTURE TABLE OF MODEL ***

M O D E L F I G	T K 5FFF 3HHH 8SSS HCER E4E 4 4													
136	TTT													
137	TTT													
138	TTT													
139	T													
140	T													
141	T													
142	TTT													
143	***													
144	***													
145	***													
146	***													
147	*													
148	*TT													
149	***													
150	***													





C O N T E N T S

TK538H

ENGINE (E3CD-TB05)

CYLINDER HEAD.....	Fig. 1
CYLINDER HEAD COVER.....	Fig. 2
INLET MANIFOLD.....	Fig. 3
EXHAUST MANIFOLD.....	Fig. 4
TURBO CHARGER.....	Fig. 5
CYLINDER BLOCK.....	Fig. 6
BEARING/UNDER SIZE (OPTION).....	Fig. 7
OIL PAN.....	Fig. 8
REAR PLATE.....	Fig. 9
TIMING GEAR CASE.....	Fig. 10
HANGER.....	Fig. 11
VALVE.....	Fig. 12
CAM SHAFT.....	Fig. 13
PISTON.....	Fig. 14
PISTON/OVER SIZE (OPTION).....	Fig. 15
CRANK SHAFT.....	Fig. 16
OIL PUMP.....	Fig. 17
WATER PUMP.....	Fig. 18
COOLING FAN.....	Fig. 19
INJECTION NOZZLE.....	Fig. 20
INJECTION PUMP.....	Fig. 21
FUEL PIPE.....	Fig. 22
ELECTRIC (1).....	Fig. 23
ELECTRIC (2).....	Fig. 24
REPAIR PARTS (OPTION).....	Fig. 25
COMPONENT PARTS FOR 6215 - 300 - 037 - 00 ON Fig.20.....	Fig. 26
COMPONENT PARTS FOR 6215 - 600 - 078 - 00 ON Fig.21.....	Fig. 27
COMPONENT PARTS FOR 6281 - 100 - 007 - 20 ON Fig.23.....	Fig. 28
COMPONENT PARTS FOR 6281 - 200 - 020 - 00 ON Fig.23.....	Fig. 29

C O N T E N T S

CHASSIS

FUEL SYSTEM.....	Fig. 1
AIR CLEANER SYSTEM.....	Fig. 2
RADIATOR SYSTEM	Fig. 3
MUFFLER SYSTEM (EXCEPT C TYPE)	Fig. 4
MUFFLER (UPPER) SYSTEM (C TYPE).....	Fig. 5
TANK (FUEL) SYSTEM (EXCEPT C TYPE)	Fig. 6
TANK (FUEL) SYSTEM (C TYPE)	Fig. 7
BATTERY BASE SYSTEM.....	Fig. 8
ACCELERATOR SYSTEM.....	Fig. 9
CASE (FRONT) SYSTEM.....	Fig. 10
INPUT SHAFT SYSTEM.....	Fig. 11
MAIN GEAR SYSTEM.....	Fig. 12
HST UNIT SYSTEM.....	Fig. 13
GEAR (PTO) SYSTEM.....	Fig. 14
METAL (TRUNNION) SYSTEM.....	Fig. 15
CASE (MIDDLE) SYSTEM.....	Fig. 16
CASE (SPACER) SYSTEM.....	Fig. 17
METAL (HST) SYSTEM	Fig. 18
REAR MISSION CASE SYSTEM.....	Fig. 19
COVER HOLDER, COVER (BOTTOM) SYSTEM.....	Fig. 20
SUB CHANGE GEAR SYSTEM.....	Fig. 21
SUB CHANGE SYSTEM.....	Fig. 22
4WD DRIVE GEAR SYSTEM.....	Fig. 23
4WD CHANGE SYSTEM.....	Fig. 24
PTO COUNTER SYSTEM	Fig. 25
PTO CHANGE GEAR SYSTEM.....	Fig. 26
PTO CHANGE SYSTEM	Fig. 27
SUB CHANGE SYSTEM.....	Fig. 28
LEVER (SUB) SYSTEM	Fig. 29
LEVER (PTO) SYSTEM (A)	Fig. 30

LEVER (PTO) SYSTEM (B).....	Fig. 31
LEVER (4WD), ROD (4WD) SYSTEM	Fig. 32
DRIVE PINION SYSTEM.....	Fig. 33
DIFFERENTIAL GEAR SYSTEM.....	Fig. 34
REAR AXLE HOUSING SYSTEM.....	Fig. 35
WHEEL PINION SYSTEM.....	Fig. 36
REAR WHEEL SHAFT SYSTEM.....	Fig. 37
BRAKE SYSTEM	Fig. 38
ROD (BRAKE) SYSTEM.....	Fig. 39
BRAKE (ARM) SYSTEM.....	Fig. 40
BRAKE PEDAL SYSTEM.....	Fig. 41
PARKING BRAKE SYSTEM.....	Fig. 42
DIFF – LOCK PEDAL SYSTEM.....	Fig. 43
STEERING WHEEL SYSTEM	Fig. 44
STEERING SHAFT SYSTEM.....	Fig. 45
TILT HANDLE SYSTEM	Fig. 46
POWER STEERING SYSTEM	Fig. 47
AXLE BRACKET SYSTEM	Fig. 48
DRIVE SHAFT SYSTEM.....	Fig. 49
BEVEL CASE SYSTEM.....	Fig. 50
AXLE HOUSING SYSTEM	Fig. 51
FRONT GEAR CASE SYSTEM	Fig. 52
TIE ROD SYSTEM	Fig. 53
CYLINDER CASE SYSTEM.....	Fig. 54
LIFT ARM SYSTEM.....	Fig. 55
CYLINDER SYSTEM.....	Fig. 56
SLOW RETURN SHAFT SYSTEM	Fig. 57
LINK (POSITION) SYSTEM.....	Fig. 58
BRACKET (POSITION) SYSTEM	Fig. 59
LEVER (POSITION), ROD (POSITION) SYSTEM.....	Fig. 60
PIPING (MAIN) SYSTEM (1/3) (2/3) (3/3)	Fig. 61
PIPING (SUB) SYSTEM	Fig. 62
STACK SYSTEM (EXCEPT C TYPE)	Fig. 63
PIPING (COOLER) SYSTEM.....	Fig. 64

COVER (SHIELD), REAR HITCH SYSTEM.....	Fig. 65
3P LINK SYSTEM.....	Fig. 66
LOWER LINK, LIFT ROD SYSTEM.....	Fig. 67
VALVE (REMOTE/2R) SYSTEM (C TYPE).....	Fig. 68
GRILLE SYSTEM.....	Fig. 69
HOOD SYSTEM (C TYPE).....	Fig. 70
HOOD SYSTEM (EXCEPT C TYPE).....	Fig. 71
FRAME (HOOD), DASH – BOARD SYSTEM.....	Fig. 72
FAN COVER SYSTEM.....	Fig. 73
FENDER SYSTEM (EXCEPT C TYPE).....	Fig. 74
FENDER SYSTEM (C TYPE).....	Fig. 75
LEVER GUIDE, LEVER STOPPER SYSTEM.....	Fig. 76
SEAT SYSTEM.....	Fig. 77
BACK MIRROR SYSTEM (EXCEPT C TYPE).....	Fig. 78
FRONT MOUNT SYSTEM (R TYPE).....	Fig. 79
FRONT MOUNT SYSTEM (EXCEPT C, R TYPE).....	Fig. 80
FRONT MOUNT SYSTEM (C TYPE).....	Fig. 81
REAR MOUNT SYSTEM (EXCEPT C, R TYPE).....	Fig. 82
REAR MOUNT SYSTEM (R TYPE).....	Fig. 83
REAR MOUNT SYSTEM (C TYPE).....	Fig. 84
FLOOR SYSTEM (EXCEPT C TYPE).....	Fig. 85
FLOOR SYSTEM (C TYPE).....	Fig. 86
PEDAL (HST) SYSTEM.....	Fig. 87
CRUISE CONTROL SYSTEM.....	Fig. 88
BATTERY (DELKOR) SYSTEM.....	Fig. 89
HEAD LAMP SYSTEM.....	Fig. 90
LAMP SYSTEM (EXCEPT C TYPE).....	Fig. 91
LAMP SYSTEM (C TYPE).....	Fig. 92
PANEL SYSTEM.....	Fig. 93
SWITCH SYSTEM.....	Fig. 94
HARNESS SYSTEM (EXCEPT C TYPE).....	Fig. 95
HARNESS SYSTEM (C TYPE).....	Fig. 96
HARNESS (CAB) SYSTEM (C TYPE).....	Fig. 97
SWITCH (PTO) SYSTEM (S, P TYPE).....	Fig. 98

MIRROR SYSTEM (C TYPE)	Fig. 99
FRAME (FRONT) SYSTEM (C TYPE)	Fig. 100
FRAME (REAR) SYSTEM (C TYPE)	Fig. 101
FRAME (ACCESSORY) SYSTEM (C TYPE)	Fig. 102
CANOPY SYSTEM (C TYPE)	Fig. 103
CAB GLASS SYSTEM (C TYPE)	Fig. 104
DOOR SYSTEM (C TYPE)	Fig. 105
DOOR GLASS SYSTEM (C TYPE)	Fig. 106
DOOR SEAL, DOOR LOCK SYSTEM (C TYPE)	Fig. 107
REAR GLASS, SEAL SYSTEM (C TYPE)	Fig. 108
COCKPIT SYSTEM (C TYPE)	Fig. 109
HEATER SYSTEM (C TYPE) (1/2) (2/2)	Fig. 110
ORNAMENT	Fig. 111
LABEL (CONTROL)	Fig. 112
LABEL (ENGLISH)	Fig. 113
LABEL	Fig. 114
TOOL	Fig. 115
OPTIONAL PARTS	
AIR CLEANER ASSY (OPTION)	Fig. 116
MUFFLER (TAIL/UPPER) SYSTEM (EXCEPT C TYPE) (OPTION)	Fig. 117
PTO (MIDDLE) SET (OPTION)	Fig. 118
REAR WHEEL SYSTEM (OPTION)	Fig. 119
REAR WHEEL (TURF) SYSTEM (OPTION)	Fig. 120
FRONT HITCH SET (OPTION)	Fig. 121
FRONT HITCH (EEC) SET (OPTION)	Fig. 122
SPACER (AXLE) SET (OPTION)	Fig. 123
FRONT WHEEL SYSTEM (OPTION)	Fig. 124
HUB RING SYSTEM (OPTION)	Fig. 125
FRONT WHEEL (TURF) SYSTEM (OPTION)	Fig. 126
DRAFT SET (OPTION)	Fig. 127
VALVE (REMOTE/1) SET (OPTION)	Fig. 128
DRAW BAR SET (OPTION)	Fig. 129
TRAILER HITCH SET (OPTION)	Fig. 130

CREVICE (DRAW BAR) SYSTEM (OPTION)	Fig. 131
HIGH HITCH SET (OPTION)	Fig. 132
VALVE (REMOTE/1R) SET (OPTION)	Fig. 133
VALVE (REMOTE/2R) SET (EXCEPT C TYPE) (OPTION)	Fig. 134
VALVE (REMOTE/2) SET (OPTION)	Fig. 135
SUB STEP (R) SYSTEM (OPTION)	Fig. 136
SOCKET (7P) SYSTEM (OPTION)	Fig. 137
SWITCH (SAFETY/REPAIR) SET (OPTION)	Fig. 138
2 ROPS SYSTEM (R TYPE) (OPTION)	Fig. 139
ROPS SET (EXCEPT C, R TYPE) (OPTION) (1/2) (2/2)	Fig. 140
INTERIOR SYSTEM (C TYPE) (OPTION)	Fig. 141

COMPONENT PARTS

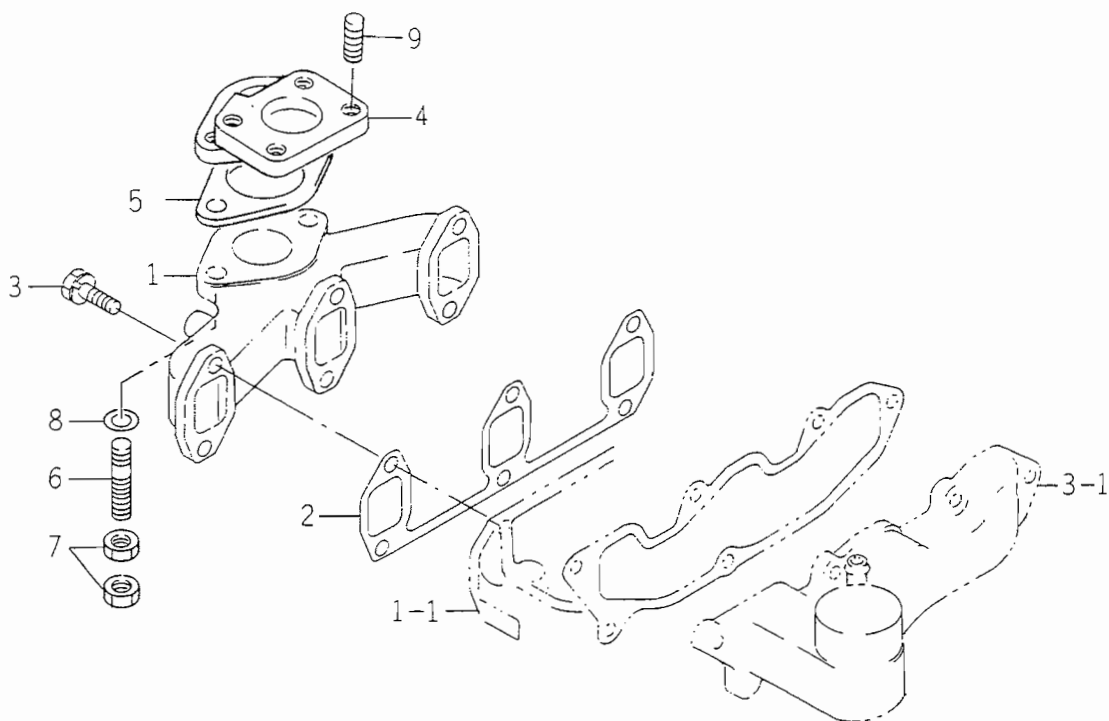
COMPONENT PARTS FOR K211 - 005 - 000 - 10 ON Fig.128, 135	Fig. 142
COMPONENT PARTS FOR K211 - 008 - 000 - 10 ON Fig.56	Fig. 143
COMPONENT PARTS FOR K256 - 001 - 000 - 00 ON Fig.62	Fig. 144
COMPONENT PARTS FOR K275 - 001 - 000 - 00 ON Fig.62	Fig. 145
COMPONENT PARTS FOR 1561 - 221 - 500 - 10 ON Fig.14	Fig. 146
COMPONENT PARTS FOR 1581 - 621 - 530 - 00 ON Fig.97	Fig. 147
COMPONENT PARTS FOR 1640 - 530 - 600 - 10 ON Fig.68, 133, 134	Fig. 148
COMPONENT PARTS FOR 1673 - 407 - 550 - 00 ON Fig.47	Fig. 149
COMPONENT PARTS FOR 1674 - 658 - 220 - 00 ON Fig.93	Fig. 150

WIRING DIAGRAM

ENGINE

E3CD – TB05...TK538H

FIG. 4 EXHAUST MANIFOLD



6005-140D

KEY	PART CODE	DESCRIPTION	S P C	TYPE OF MODEL		I T C	C O L	G R P	REMARKS
				E3CD	TB05				
1	6 2 1 4 - 1 4 1 - 0 2 3 - 0 0	MANIFOLD/EXHAUST	*	1					
2	6 2 1 4 - 1 4 5 - 0 0 4 - 2 0	GASKET/EXH MANIFOLD	*	1					
3	V 2 1 1 - 5 6 0 - 8 0 2 - 5 0	BOLT, SEMS/M8X25 7T	*	6					
4	6 2 2 2 - 1 1 1 - 0 0 5 - 1 0	PIPE/EXHAUST	*	1					
5	1 5 9 4 - 1 0 5 - 0 0 1 - 0 0	GASKET	*	1					
6	6 2 0 9 - 3 0 0 - 0 1 2 - 0 0	STUD	*	2					
7	6 2 0 9 - 4 0 9 - 0 0 4 - 0 0	NUT	*	4					
8	V 4 1 1 - 7 0 0 - 0 1 0 - 0 0	WASHER	*	2					
9	6 9 0 4 - 1 3 0 - 8 2 5 - 0 0	STUD	*	4					