

SECTION AV

AUDIO VISUAL, NAVIGATION & TELEPHONE SYSTEM

CONTENTS

PRECAUTIONS	4	REMOVAL	33
Precautions for Supplemental Restraint System (SRS) "AIR BAG" and "SEAT BELT PRE-TENSIONER"	4	INSTALLATION	33
Precautions for Battery Service	4	Removal and Installation of Tweeter Behind Door Mirror	33
PREPARATION	5	REMOVAL	33
Commercial Service Tools	5	INSTALLATION	33
AUDIO	6	Removal and Installation of Rear Side Speaker	33
System Description	6	REMOVAL	33
BASE SYSTEM	6	INSTALLATION	34
BOSE SYSTEM	6	Removal and Installation of Woofer	34
SPEED SENSITIVE VOLUME SYSTEM	8	REMOVAL	34
Component Parts Location	8	INSTALLATION	34
Schematic / Base System	9	Removal and Installation of BOSE Speaker Amp... ..	34
Wiring Diagram —AUDIO— / Base System	10	REMOVAL	34
Schematic / BOSE System	14	INSTALLATION	35
Wiring Diagram —AUDIO— / BOSE System	15	Removal and Installation of Steering Wheel Audio Control Switch	35
Terminals and Reference Value for Audio Unit for Base System	21	ANTENNA	36
Terminals and Reference Value for Audio Unit for BOSE System	22	System Description (Radio Antenna)	36
Terminals and Reference Value for BOSE Speaker Amp.	24	Wiring Diagram —W/ANT— (Radio Antenna)	37
Steering Wheel Audio Control Switch Resistance Inspection	26	Location of Antenna	38
Trouble Diagnosis	27	RADIO ANTENNA	38
Power Supply Circuit Inspection	28	TEL ANTENNA	39
Steering Wheel Audio Control Switch Does Not Operate	29	Window Antenna Repair	39
WITHOUT TELEPHONE SYSTEM	29	ELEMENT CHECK	39
WITH TELEPHONE SYSTEM	30	ELEMENT REPAIR	40
Speed Sensitive Volume System Does Not Work..	30	NAVIGATION SYSTEM	41
Removal and Installation for Audio Unit	32	System Description	41
REMOVAL	32	TRAVEL DISTANCE	41
INSTALLATION	32	TRAVEL DIRECTION	41
Removal and Installation for A/C and Audio Controller	33	MAP-MATCHING	41
REMOVAL	33	GPS (GLOBAL POSITIONING SYSTEM)	42
INSTALLATION	33	COMPONENT DESCRIPTION	43
Removal and Installation of Door Speaker	33	WARNING INDICATIONS	43
		Precautions for NAVI Control Unit Replacement ...	44
		Component Parts Location	44
		Schematic	45
		Wiring Diagram —NAVI—	46
		Wiring Diagram —COMM—	51
		Terminals and Reference Value for NAVI Control	

Unit	53	TIMES THE CURRENT-LOCATION MARK IS IN THE RIGHT PLACE AND SOMETIMES IT IS IN THE WRONG PLACE	89
Terminals and Reference Value for Display Unit ...	55	LOCATION CORRECTION BY MAP-MATCHING IS SLOW	89
Terminals and Reference Value for NAVI Switch ...	56	ALTHOUGH THE GPS RECEIVING DISPLAY IS GREEN, THE VEHICLE MARK DOES NOT RETURN TO THE CORRECT LOCATION	89
Terminals and Reference Value for Audio Unit for Base System	57	THE NAME OF THE CURRENT PLACE IS NOT DISPLAYED	89
Terminals and Reference Value for Audio Unit for BOSE System	57	CONTENTS OF THE DISPLAY DIFFER FOR THE BIRD VIEW™ AND THE (FLAT) MAP SCREEN	89
Self-Diagnosis Function	58	Removal and Installation of NAVI Control Unit	90
DESCRIPTION	58	REMOVAL	90
DIAGNOSIS ITEM	58	INSTALLATION	90
Self-Diagnosis Operation Procedure	59	Removal and Installation of GPS Antenna	90
Self Diagnosis Mode	59	REMOVAL	90
DIAGNOSIS RESULT	60	INSTALLATION	90
Confirmation/Adjustment Mode	61	Removal and Installation of NAVI Switch	91
DISPLAY DIAGNOSIS	61	REMOVAL	91
VEHICLE SIGNALS	62	INSTALLATION	91
NAVIGATION	62	Removal and Installation of Display Unit	91
ERROR HISTORY	63	REMOVAL	91
DELETE UNIT CONNECTION LOG	65	INSTALLATION	91
Power Supply and Ground Circuit Inspection for NAVI Control Unit	66	TELEPHONE	92
Power Supply and Ground Circuit Inspection for Display Unit and NAVI Switch	67	System Description	92
Vehicle Speed Signal Inspection	68	HANDS-FREE PHONE SYSTEM	92
Illumination Signal Inspection	69	Component Parts Location	93
Ignition Signal Inspection	69	Schematic	94
Reverse Signal Inspection (With A/T)	70	Wiring Diagram —H/PHON—	95
Reverse Signal Inspection (With M/T)	70	Terminals and Reference Value for TEL Adapter Unit	101
Navigation System Is Not Operated by NAVI Switch..	71	Terminals and Reference Value for Audio Unit for BOSE System	102
Screen Is Not Shown	72	Steering Wheel Audio Control Switch Resistance Inspection	102
Color of RGB Image Is Not Proper (Bluish)	74	Self-Diagnosis Function	102
Color of RGB Image Is Not Proper (Reddish)	75	OPERATION PROCEDURE	103
Color of RGB Image Is Not Proper (Yellowish)	76	Basic Inspection of Hands-Free Phone	105
RGB Screen Is Rolling	77	Steering Wheel Audio Control Switch Does Not Operate	105
Voice Guidance Is Not Heard	78	Voice Activated Control Function Does Not Operate	107
No Fuel Information Is Displayed	79	TEL VOICE GUIDANCE IS HEARD WHEN PRESSING STEERING WHEEL AUDIO CONTROL SWITCH	107
Vehicle Condition Setting Is Not Possible	79	TEL VOICE GUIDANCE IS NOT HEARD WHEN PRESSING STEERING WHEEL AUDIO CONTROL SWITCH	108
No Warning Message Is Displayed (Warning Lamp In Combination Meter Illuminates)	80	Removal and Installation of TEL Adapter Unit	110
The Position of The Current-Location Mark Is Not Correct	80	REMOVAL	110
Radio Wave From The GPS Satellite Is Not Received	80	INSTALLATION	110
Driving Test	81	Removal and Installation for TEL Antenna	110
Example of Symptoms Judged Not Malfunction ...	82	REMOVAL	110
BASIC OPERATION	82	INSTALLATION	110
VEHICLE MARK	82	Removal and Installation of Microphone Unit	110
DESTINATION, PASSING POINTS, AND MENU ITEMS CANNOT BE SELECTED/SET	83	REMOVAL	110
VOICE GUIDANCE	83	INSTALLATION	111
ROUTE SEARCHING	83	Removal and Installation of Steering Wheel Audio	
EXAMPLES OF CURRENT-LOCATION MARK DISPLACEMENT	85		
THE CURRENT POSITION MARK SHOWS A POSITION WHICH IS COMPLETELY WRONG..	88		
THE CURRENT POSITION MARK JUMPS	88		
THE CURRENT-LOCATION MARK IS IN A RIVER OR THE SEA	89		
WHEN DRIVING ON THE SAME ROAD, SOME-			

Control Switch111

A

B

C

D

E

F

G

H

I

J

AV

L

M

PRECAUTIONS

PRECAUTIONS

PFP:00001

Precautions for Supplemental Restraint System (SRS) “AIR BAG” and “SEAT BELT PRE-TENSIONER”

NKS002KC

The Supplemental Restraint System such as “AIR BAG” and “SEAT BELT PRE-TENSIONER”, used along with a front seat belt, helps to reduce the risk or severity of injury to the driver and front passenger for certain types of collision. This system includes seat belt switch inputs and dual stage front air bag modules. The SRS system uses the seat belt switches to determine the front air bag deployment, and may only deploy one front air bag, depending on the severity of a collision and whether the front occupants are belted or unbelted. Information necessary to service the system safely is included in the SRS and SB section of this Service Manual.

WARNING:

- To avoid rendering the SRS inoperative, which could increase the risk of personal injury or death in the event of a collision which would result in air bag inflation, all maintenance must be performed by an authorized NISSAN/INFINITI dealer.
- Improper maintenance, including incorrect removal and installation of the SRS, can lead to personal injury caused by unintentional activation of the system. For removal of Spiral Cable and Air Bag Module, see the SRS section.
- Do not use electrical test equipment on any circuit related to the SRS unless instructed to in this Service Manual. SRS wiring harnesses can be identified by yellow and/or orange harnesses or harness connectors.

Precautions for Battery Service

NKS002KD

Before disconnecting the battery, lower both the driver and passenger windows. This will prevent any interference between the window edge and the vehicle when the door is opened/closed. During normal operation, the window slightly raises and lowers automatically to prevent any window to vehicle interference. The automatic window function will not work with the battery disconnected.

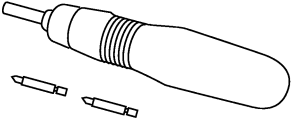
PREPARATION

PREPARATION

PFP:00002

Commercial Service Tools

NKS002F0

Tool name	Description
<p>Power tool</p>  <p>PBIC0191E</p>	<p>Loosening bolts and nuts</p>

A
B
C
D
E
F
G
H
I
J
L
M

AV

AUDIO

System Description BASE SYSTEM

Refer to Owner's Manual for audio system operating instructions.

Power is supplied at all times

- through 15A fuse [No. 37, located in the fuse and fusible link box]
- to audio unit terminal 6.

With the ignition switch in the ACC or ON position, power is supplied

- through 10A fuse [No. 6, located in the fuse block (J/B)]
- to audio unit terminal 10.

Ground is supplied through the case of the audio unit.

Audio unit and A/C and audio controller are connected by FPC (Flexible Print Circuit).

A/C and audio controller integrates A/C switches and audio switches.

When A/C and audio controller is pressed to audio switch, it sends audio signal to audio unit. Then audio signals are supplied

- through audio unit terminals 1, 2, 3, and 4
- to terminals 1 and 2 of front door speaker LH and RH
- to terminals 1 and 2 of tweeter LH and RH,
- through audio unit terminals 13, 14, 15, and 16
- to terminals 1 and 2 of rear door speaker LH and RH.

When one of steering wheel audio control switches is pressed to volume up, seek up, or mode ON, the resistance in steering wheel audio control switch circuit changes depending on which button is pressed. This will change the output voltage.

Power is supplied

- from audio unit terminal 22
- through combination switch (spiral cable) terminals 24 and 20
- to steering wheel audio control switch.

Ground is supplied

- from steering wheel audio control switch
- through combination switch (spiral cable) terminals 17 and 31
- to audio unit terminal 25.

When one of steering wheel audio control switches is pressed to volume down, seek down or power ON, resistance in steering wheel audio control switch circuit changes depending on which button is pressed. This will change the voltage. Power is supplied

- from audio unit terminal 23
- through combination switch (spiral cable) terminals 32 and 16
- to steering wheel audio control switch.

Ground is supplied

- from steering wheel audio control switch
- through combination switch (spiral cable) terminals 17 and 31
- to audio unit terminal 25.

BOSE SYSTEM

Refer to Owner's Manual for audio system operating instructions.

Power is supplied at all times

- through 15A fuse [No. 37, located in the fuse and fusible link box]
- to audio unit terminal 6,
- to BOSE speaker amp. terminal 1.

With the ignition switch in the ACC or ON position, power is supplied

- through 10A fuse [No. 6, located in the fuse block (J/B)]
- to audio unit terminal 10.

AUDIO

Ground is supplied through the case of the audio unit.

Ground is also supplied

- to BOSE speaker amp. terminal 17
- through body ground B5 and B29.

Audio unit and A/C and audio controller are connected by FPC (Flexible Print Circuit).

A/C and audio controller integrates A/C switches and audio switches.

When A/C and audio controller is pressed to audio switch, it sends audio signal to audio unit.

Then, audio signals are supplied

- through audio unit terminals 1, 2, 3, 4, 13, 14, 15, and 16
- to BOSE speaker amp. terminals 23, 24, 25, 26, 27, 28, 29, and 30.

Audio signals are amplified by the BOSE speaker amp.

The amplified audio signals are supplied

- through BOSE speaker amp. terminals 13, 14, 15, and 16
- to terminals 1 and 2 of front door speaker LH and RH
- to terminals 1 and 2 of tweeter LH and RH,
- through BOSE speaker amp. terminals 9, 10, 11, and 12
- to terminals 1 and 2 of rear door speaker LH and RH,
- through BOSE speaker amp. terminals 2, 3, 18 and 19
- to terminals 1 and 2 of woofer LH and RH.

Without Telephone System

When one of steering wheel audio control switches is pressed to volume up seek up or mode ON, the resistance in steering wheel audio control switch circuit changes depending on which button is pressed. This will change the output voltage.

Power is supplied

- from audio unit terminal 22
- through combination switch (spiral cable) terminals 24 and 20
- to steering wheel audio control switch.

Ground is supplied

- from steering wheel audio control switch
- through combination switch (spiral cable) terminals 17 and 31
- to audio unit terminal 25.

When one of steering wheel audio control switches is pressed to volume down, seek down or power ON, the resistance in steering wheel audio control switch circuit changes depending on which button is pressed. This will change the output voltage.

Power is supplied

- from audio unit terminal 23
- through combination switch (spiral cable) terminals 32 and 16
- to steering wheel audio control switch.

Ground is supplied

- from steering wheel audio control switch
- through combination switch (spiral cable) terminals 17 and 31
- to audio unit terminal 25.

With Telephone System

When one of steering wheel audio control switches is pressed to volume up, seek up or PTT ON, the resistance in steering wheel audio control switch circuit changes depending on which button is pressed. This will change the output voltage.

Power is supplied

- from audio unit terminal 12
- through combination switch (spiral cable) terminals 24 and 20
- to steering wheel audio control switch.

Ground is supplied

A

B

C

D

E

F

G

H

I

J

AV

L

M

AUDIO

- from steering wheel audio control switch
- through combination switch (spiral cable) terminals 17 and 31
- to audio unit terminal 14.

When one of steering wheel audio control switches is pressed to volume down, seek down or mode ON, the resistance in steering wheel audio control switch circuit changes depending on which button is pressed. This will change the output voltage.

Power is supplied

- from audio unit terminal 13
- through combination switch (spiral cable) terminals 32 and 16
- to steering wheel audio control switch.

Ground is supplied

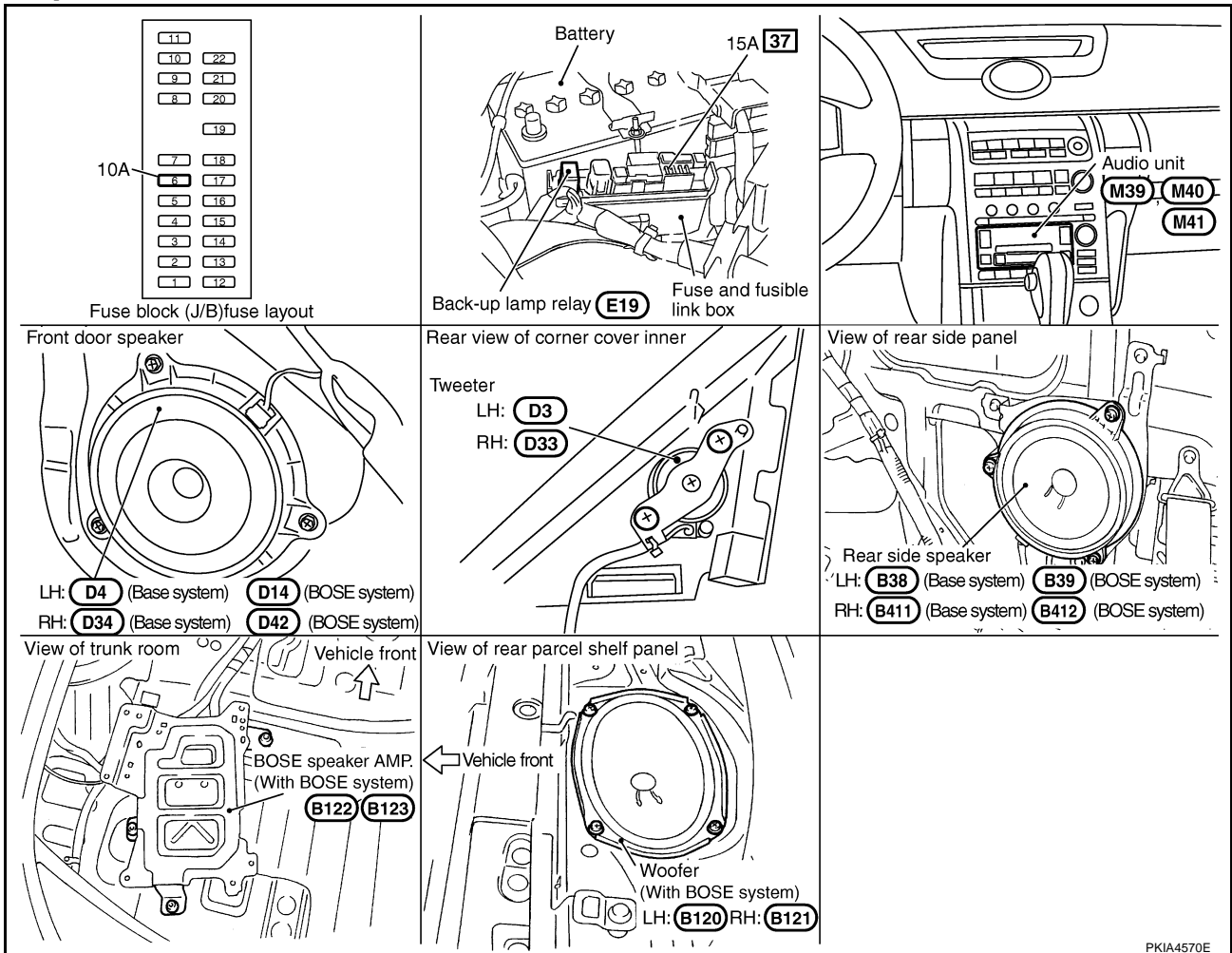
- from steering wheel audio control switch
- through combination switch (spiral cable) terminals 17 and 31
- to audio unit terminal 14.

SPEED SENSITIVE VOLUME SYSTEM

Volume level of this system goes up and down automatically in proportion to the vehicle speed. And the control level can be selected by the customer.

Component Parts Location

NKS002F2

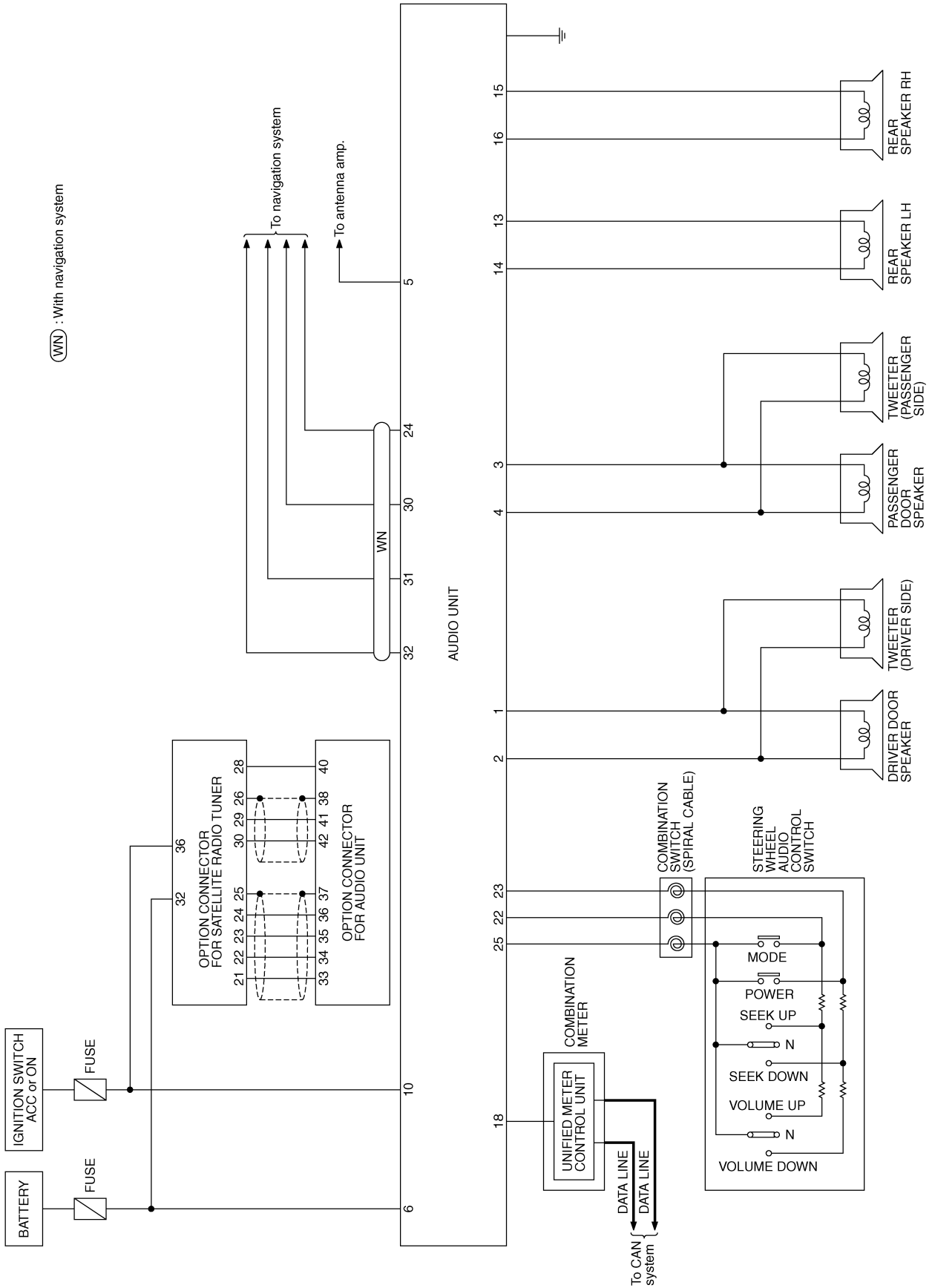


AUDIO

Schematic / Base System

NKS0000H

A
B
C
D
E
F
G
H
I
J
AV
L
M



TKWM5170E

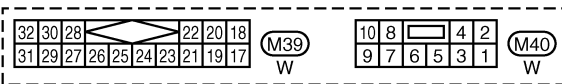
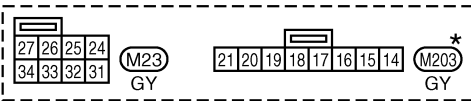
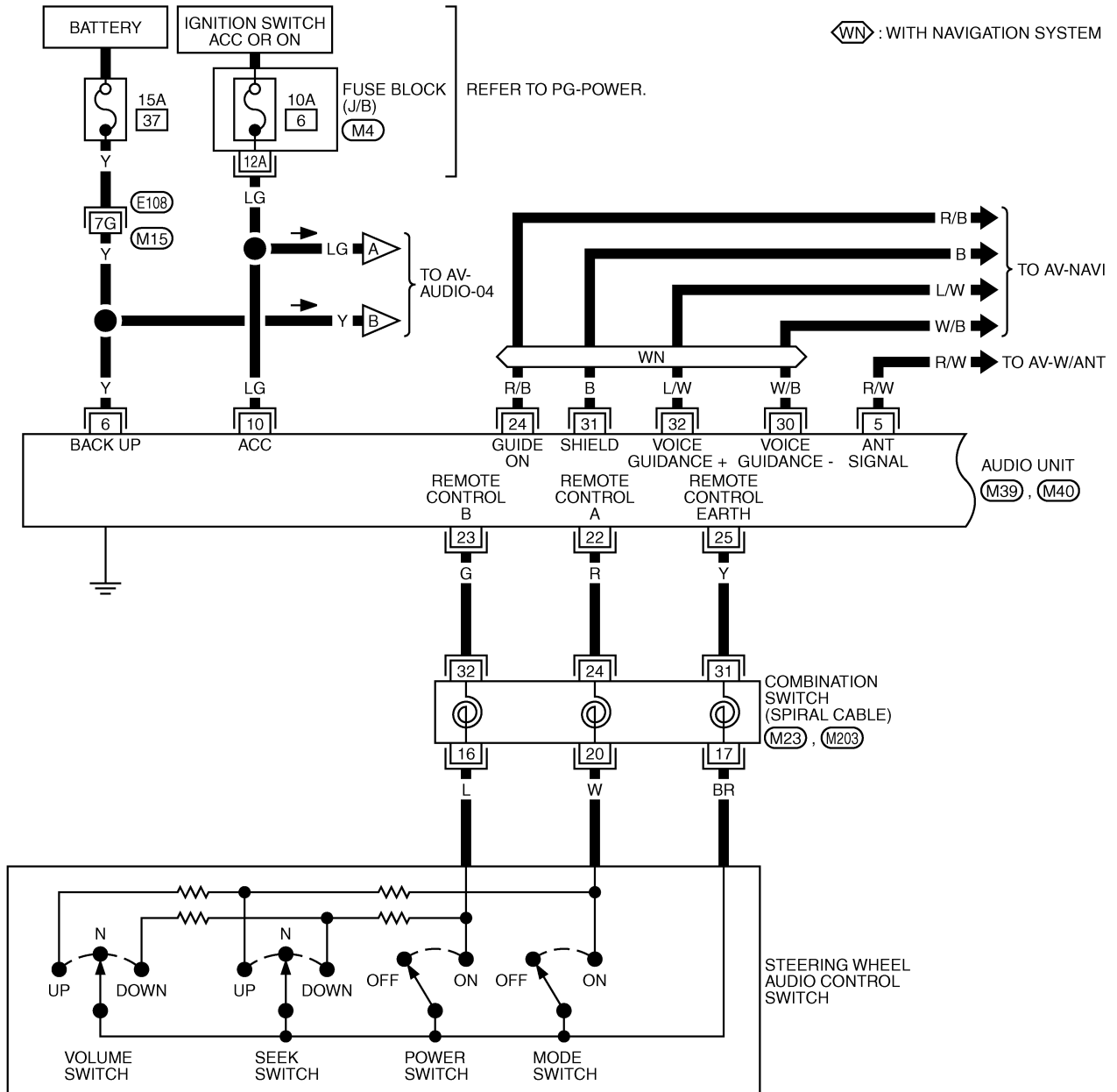
AUDIO

Wiring Diagram —AUDIO— / Base System

NKS00001

AV-AUDIO-01

WN : WITH NAVIGATION SYSTEM



*: THIS CONNECTOR IS NOT SHOWN IN "HARNESS LAYOUT", PG SECTION.

REFER TO THE FOLLOWING.
 E108 -SUPER MULTIPLE JUNCTION (SMJ)
 M4 -FUSE BLOCK-JUNCTION BOX (J/B)

TKWM5171E