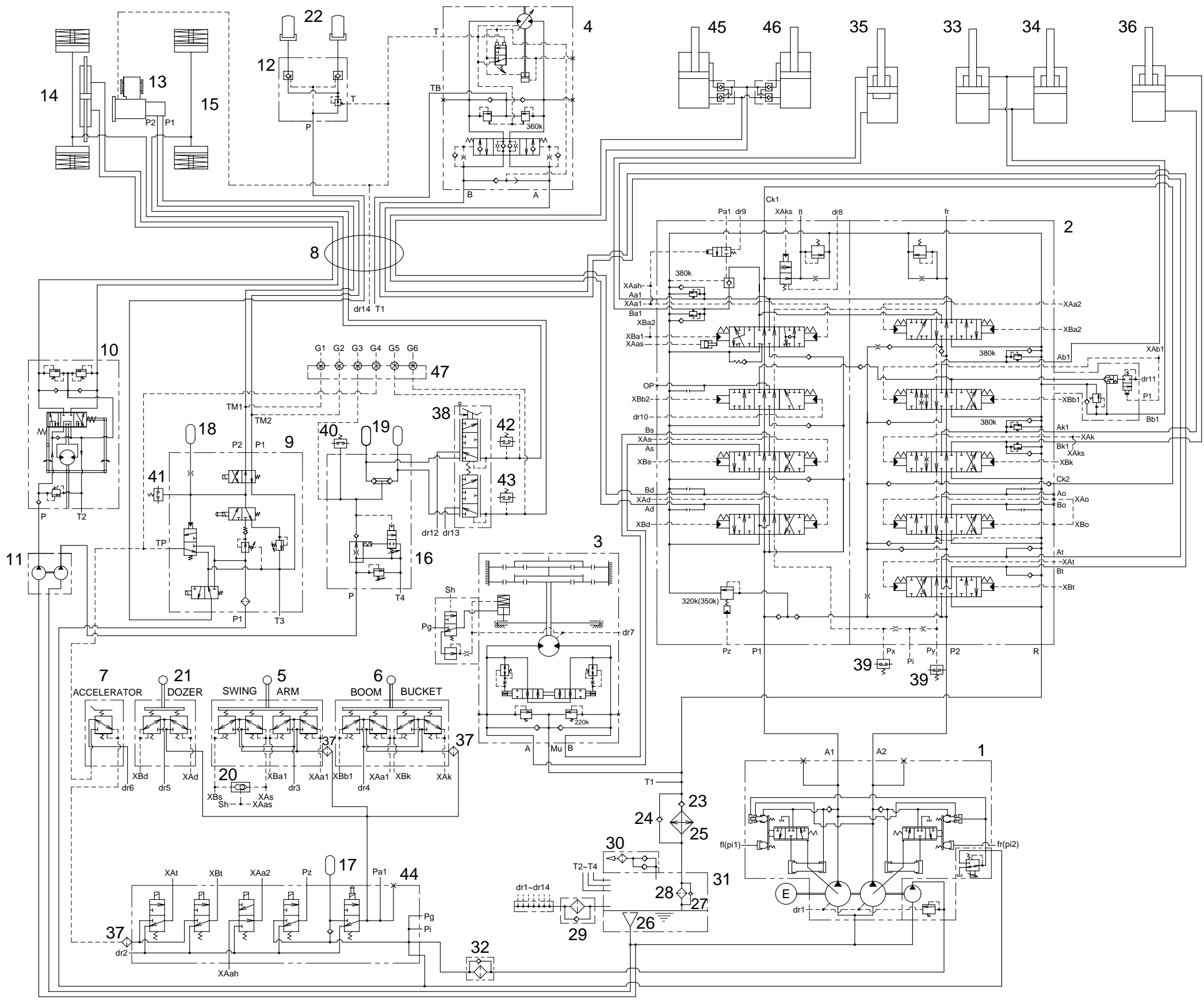


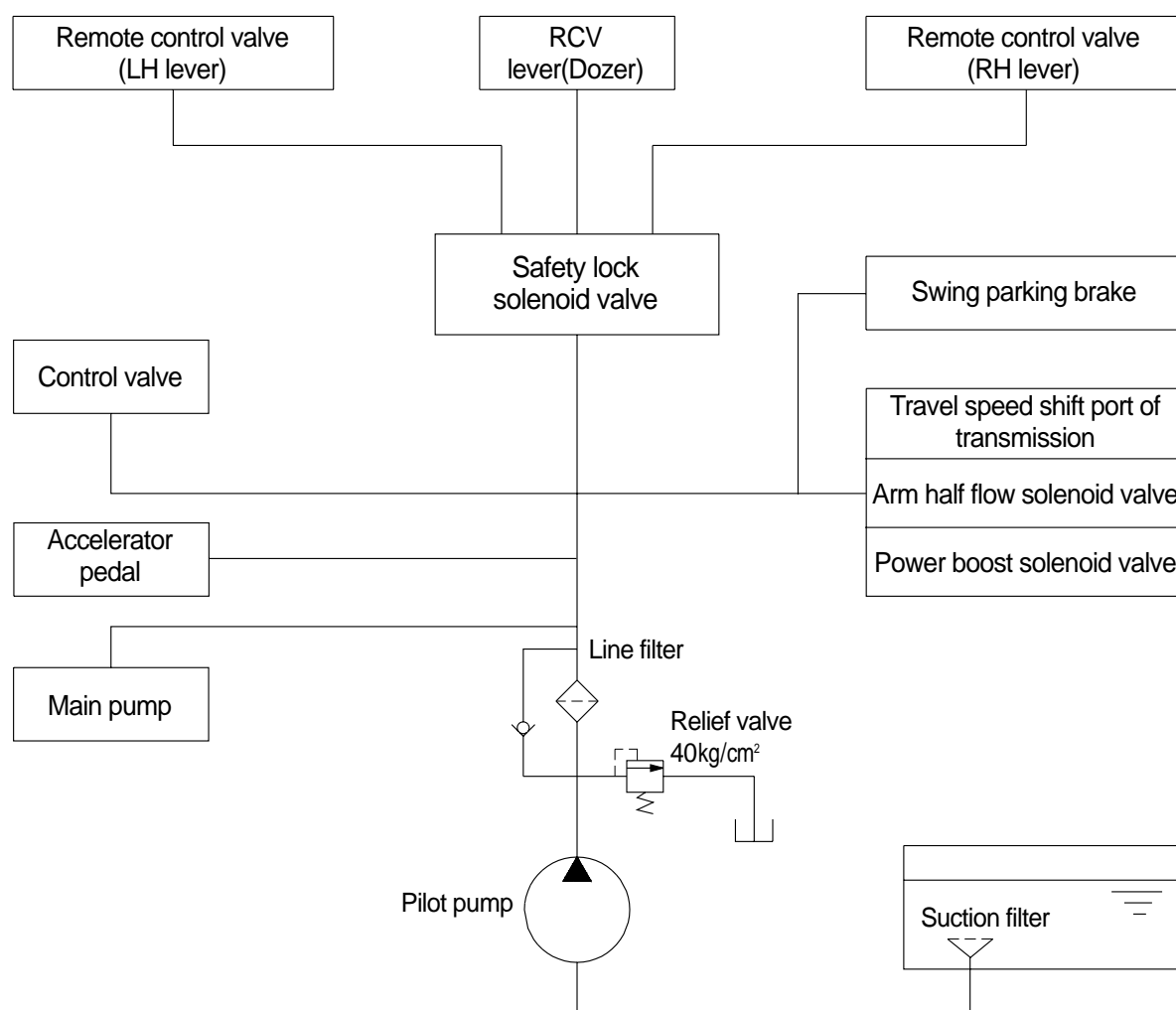
SECTION 3 HYDRAULIC SYSTEM

GROUP 1 HYDRAULIC CIRCUIT



- 1 Main pump
- 2 Main control valve
- 3 Swing motor
- 4 Travel motor
- 5 RCV lever(LH)
- 6 RCV lever(RH)
- 7 Accelerator pedal
- 8 Turning joint
- 9 Transmission valve
- 10 Steering valve
- 11 Gear pump
- 12 Locking valve
- 13 Transmission
- 14 Front axle
- 15 Rear axle
- 16 Brake supply valve
- 17 Accumulator
- 18 Accumulator
- 19 Accumulator
- 20 Shuttle valve
- 21 RCV lever-Dozer
- 22 Oscillating cylinder
- 23 Check valve
- 24 Check valve
- 25 Oil cooler
- 26 Strainer
- 27 Bypass valve
- 28 Return filter
- 29 Spin filter
- 30 Air breather
- 31 Hydraulic tank
- 32 Line filter
- 33 Boom cylinder(RH)
- 34 Boom cylinder(LH)
- 35 Arm cylinder
- 36 Bucket cylinder
- 37 Last guard filter
- 38 Brake valve
- 39 Pressure switch
- 40 Pressure switch
- 41 Pressure switch
- 42 Pressure switch
- 43 Pressure switch
- 44 Solenoid valve
- 45 Dozer cylinder(RH)
- 46 Dozer cylinder(LH)
- 47 Gauge block

GROUP 3 PILOT CIRCUIT



The pilot circuit consists of suction circuit, delivery circuit and return circuit.

The pilot pump is provided with relief valve, receives the oil from the hydraulic tank through the suction filter.

The discharged oil from the pilot pump flows to the remote control valve through line filter, EPPR valve, solenoid valve assemblies, swing parking brake, main control valve and safety lock solenoid valve through line filter.