



XR125L

XR125L₃
XR125L₄
XR125L₅
XR125L₆

PARTS CATALOGUE

4



XR125L
[XR125L3-ED]

FOREWORD INDEX

1

ENGINE GROUP

2

FRAME GROUP

3

PART NUMBER INDEX

4

PART NAME INDEX

5

Instruction for use of parts catalogue

- **This parts catalogue has been created as of October 01, 2005.**
 - Since this date, the sales practice for repair parts may have been changed or the parts may have been eliminated (listed for those not for sale).
 - The modified information is reflected on the latest Electronic Parts Catalogue (EPC).
Also, refer to the parts catalogue news for any change.
 - See the parts catalogue news for any revision that is made after October 01, 2005.
- **Always specify the part number when ordering a part.**
 - Check the model, type, serial numbers, color, maker, and the size as needed before ordering a part.
 - Note that the illustrations (part drawings) can differ from the actual parts in shape.
They are given just to help you to refer to the parts.
- **When modifications or additions to this parts catalogue are made, a revised edition will be issued at an appropriate time, with successively progressing revision numbers on the cover. We recommend obtaining such revisions in order to keep your parts catalogue up-to-date at all times. To check whether a parts catalogue revision has been issued, please contact your Honda distributor.**

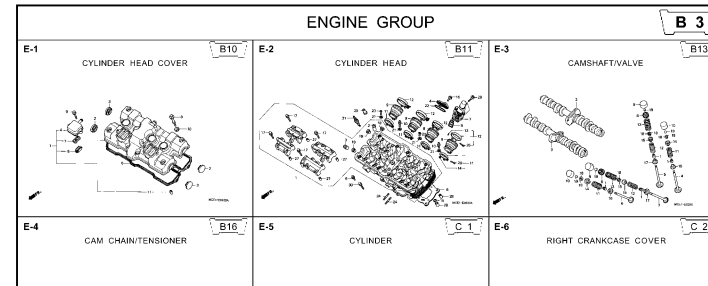
Initial version issue date
April 10, 2003
Honda Motor Co., Ltd.

CONTENTS

	Page	Address No.
● Instruction for use of parts catalogue	1	B 1
● How to refer to the part information	2	B 2
● Part catalogue structure	3	B 3
● When the parts were revised.....	4	B 4
● Abbreviations used in the parts catalogue.....	4	B 4
● Part block and serial number check	5	B 5
● Color label attachment position check.....	5	B 5
● Models, parts catalogue codes and applicable serial numbers	6	B 6
● Color label	7	B 7
● Color chart.....	8	B 8
● Fuel hose, general purpose hoses and vinyl hose.....	15	B15
● FLAT RATE SERVICE TIME.....	19	C 3
● Illustrated index	24	C 8
● ENGINE GROUP.....	31	D 1
● FRAME GROUP.....	54	F 1
● PART NO. INDEX.....	94	I 1
● PART NAME INDEX.....	98	J 1

How to refer to the part information

A Reference with "Illustrated index"

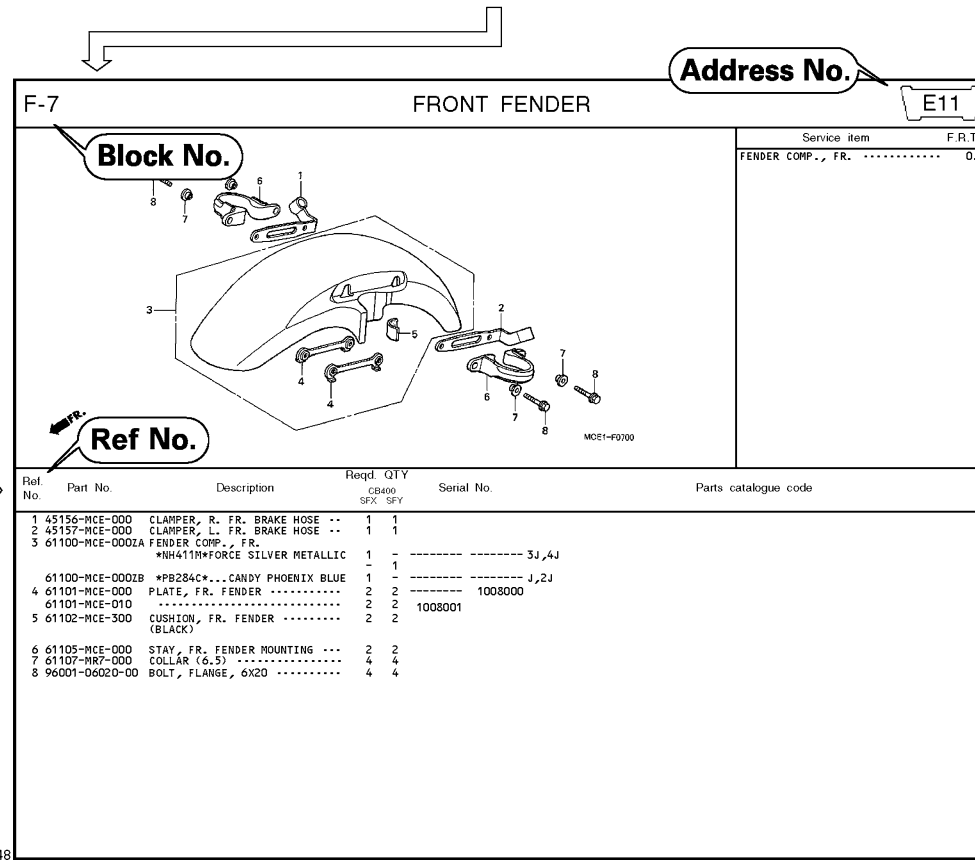


B Reference with "Part number index"

PART NO. INDEX								
Part Number	Address	Page	Ref.	Part Number	Address	Page	Ref.	F
04000				13323-MY9-751	C12	28	10	1492
				13324-MY9-751	C12	28	10	1493
04911-MCE-000	C10	26	1	13325-MY9-751	C12	28	10	1493
				13327-MY9-751	C12	28	10	1493
06000				14000				1493
06405-MY5-P00	F13	67	3	14100-MCE-000	B13	13	2	1493
06405-MY5-P10	F13	67	3	14200-MCE-000	B13	13	3	1493
06410-MY9-860	F2	56	1	14321-MCE-000	B16	16	2	1493
06435-MCE-006	F1	55	1	14401-MCE-003	B16	16	3	1493
06451-166-405	E13	51	2	14510-MBE-000	B16	16	4	1494
06451-443-405	F1	55	2	14520-MY9-691	B16	16	5	1494
06451-MA7-405	E13	51	1	14524-MY9-690	B16	16	6	1494
06455-MCE-006	E13	51	3	14546-MCE-000	B16	16	7	1494
				14620-MY9-691	B16	16	8	1494
11000				14711-MCE-000	B13	13	4	1494
11210-MCE-000	C9	25	1	14712-MCE-000	B13	13	5	1494
11350-MCE-305	C2	18	1	14721-MCE-000	B13	13	6	1494
11333-KT8-000	C6	22	1	14722-MCE-000	B13	13	7	1494
11335-MCE-000	C2	18	2	14730-MCE-000	B13	13	8	1494
11360-MCE-000	C7	23	1	14731-MCE-000	B13	13	9	1495
11365-MCE-000	C7	23	2	14731-MY9-751	B13	13	10	1495
11396-MY9-000	C2	18	3	14751-KY2-000	B13	13	11	1495
11631-MCE-000	C5	21	1	14751-MCE-000	B13	13	12	1495
11691-MY9-000	C5	21	2	14761-MCE-000	B13	13	13	1495

C Reference with "Part name index"

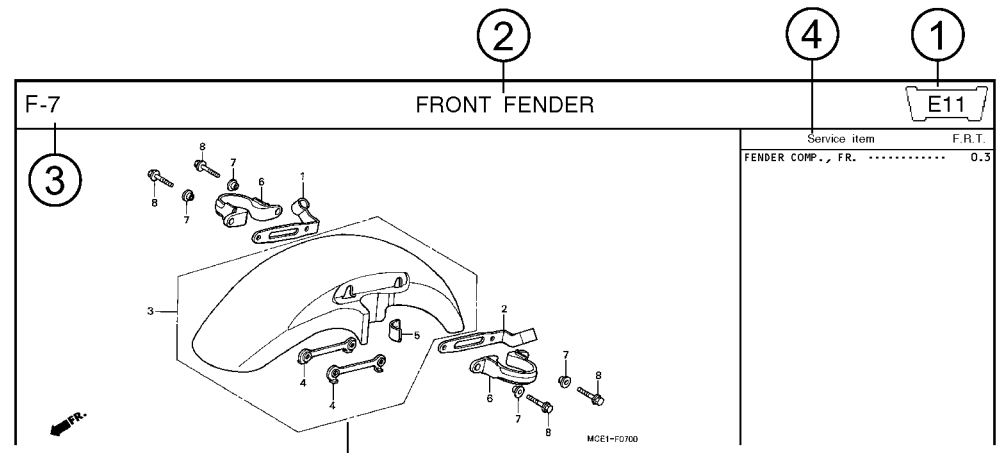
PART NAME INDEX							
Part name	Address	Page	Ref.	Part name	Address	Page	Ref.
[A]				BOLT , CHANG I			
ADJUSTER , CHAIN	F13	67	5	BOLT , CLUTC H			
ARM COMP. , GEA R CHANGE	F10	64	3	BOLT , CONNEC T			
ARM , L. MAIN STEP	F11	65	8	BOLT , DISK , 6			
ARM , L. PILLI O STEP	F11	65	12	BOLT , DISK , 8			
ARM , R. MAIN STEP	F11	65	5	BOLT , DRAIN I			
ARM , R. PILLI O STEP	F11	65	11	BOLT , FLANG E			
AUT O COC K ASSY. , FUEL	F4	58	2	BOLT , FLANG E			
AXLE , FR. WHEEL	E14	52	3	BOLT , FLANG E			
AXLE , RR. WHEEL	F2	56	3	BOLT , FLANG E			
[B]				BOLT , FLANG E			
BAG , AIR PRESSUR E GAUGE	G7	77	4	BOLT , FLANG E			
BAG , SERVICE BOOK	G7	77	1	BOLT , FLANG E			
BAG , TOOL	G7	77	3	BOLT , FLANG E			
BALL , STEEL	F11	65	20	BOLT , FLANG E			
BAN B A , INSULATOR	B11	11	11	BOLT , FLANG E			
BAN B B , INSULATOR	B11	11	12	BOLT , FLANG E			
BAND , AIR CLEANER CONNECTING TUBE	F8	62	22	BOLT , FLANG E			
BAND , U-LOCK	F16	70	5	BOLT , FLANG E			
BAND , WIRE	C10	26	14	BOLT , FLANG E			
	E5	43	21				
	G4	74	1R				



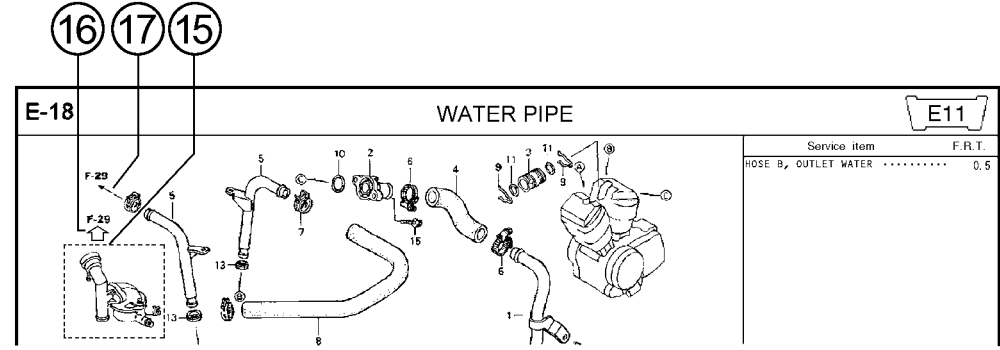
Page No.

2000.09.01 E

Part catalogue structure



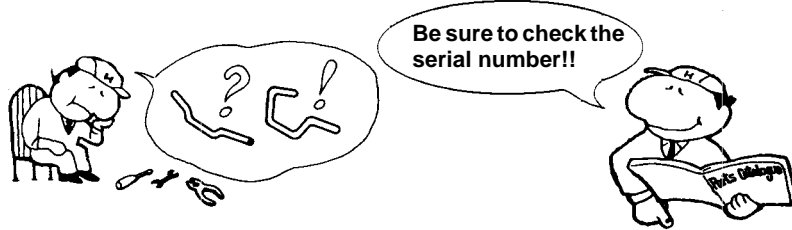
Ref. No.	Part No.	Description	Reqd. QTY		Serial No.	Parts catalogue code
			CB400	SFY		
1	45156-MCE-000	CLAMPER, R. FR. BRAKE HOSE ..	1	1		
2	45157-MCE-000	CLAMPER, L. FR. BRAKE HOSE ..	1	1		
3	61100-MCE-000ZA	FENDER COMP., FR. *NH411M*FORCE SILVER METALLIC	1	-	----- 3J,4J	
	61100-MCE-000ZB	*PB284C*...CANDY PHOENIX BLUE	1	-	----- J,2J	
4	61101-MCE-000	PLATE, FR. FENDER	2	2	1008000	
	61101-MCE-010	2	2	1008001	
5	61102-MCE-300	CUSHION, FR. FENDER	2	2		
		(BLACK)				



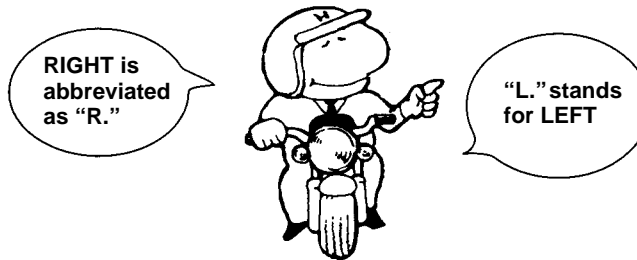
Ref. No.	Part No.	Description	Reqd. QTY		Serial No.	Parts catalogue code
			CB400	SFY		
		HOSE B, OUTLET WATER				0.5

- ① **Address number**
 - Address No. is provided (in place of the page No.) to help you refer to the part with the part No. or part name.
- ② **Block title** ③ **Block number**
- ④ **Service item/Flat rate time**
- ⑤ **Reference number**
 - Title number marked with the parenthesis or parentheses indicates that it continues from the previous page.
- ⑥ **Part number** ⑦ **Honda color code**
- ⑧ **Description**
- ⑨ **Assemblies**
 - Sections framed with broken lines in the exploded view drawings are available as complete assemblies. (Their individual parts can also be obtained.)
- ⑩ **Color description**
- ⑪ **Note**
 - Notes are shown with the parentheses in the part name column.
- ⑫ **Required quantity**
 - Reqd. QTY shown in the parenthesis or parentheses indicates the optional part.
 - Reqd. QTY marked with "N" indicates the optional part that should be selected as needed.
 - Reqd. QTY indicates the number of the part used in the block.
- ⑬ **Serial number**
- ⑭ **Parts catalogue code**
 - When the parts catalogue code column is blank, it indicates that the part is applicable to all codes.
- ⑮
 - Parts enclosed within a dotted line are covered in a different block.
- ⑯
 - A hollow arrow indicates the block No. for the parts enclosed within a dotted line .
- ⑰
 - A solid arrow indicates the block No. the part in question is connected to.

When the parts were revised



Abbreviations used in the parts catalogue



Ref. No.	Part No.	Description	Reqd. QTY		Serial No.
			CB400 SFX	SFY	
1	45156-MCE-000	CLAMPER, R. FR. BRAKE HOSE ..	1	1	
2	45157-MCE-000	CLAMPER, L. FR. BRAKE HOSE ..	1	1	
3	61100-MCE-000ZA	FENDER COMP., FR. *NH411M*FORCE SILVER METALLIC	1	-	-----3J,4J
	61100-MCE-000ZB	*PB284C*...CANDY PHOENIX BLUE	1	-	-----J,2J
4	61101-MCE-000	PLATE, FR. FENDER (###).....	2	2	-----1008000
	61101-MCE-010	2	2	-----1008001
5	61102-MCE-300	CUSHION, FR. FENDER (BLACK)	2	2	
6	61105-MCE-000	STAY, FR. FENDER MOUNTING ...	2	2	
7	61107-MR7-000	COLLAR (6.5)	4	4	
8	96001-06020-00	BOLT, FLANGE, 6X20	4	4	

The number has been used from the initial model without revision.

When shown at the left side, it is applicable to the models of No.1008001 and the subsequent numbers.

When shown at the right side, it is applicable to the models up to No.1008000.

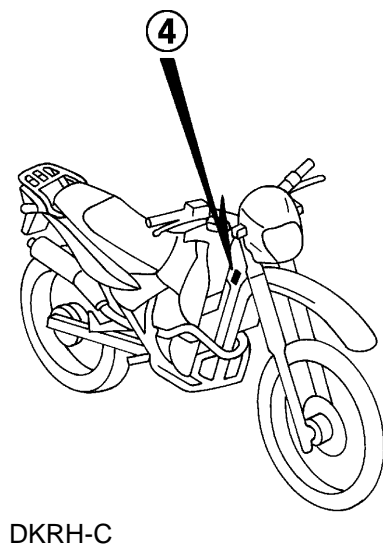
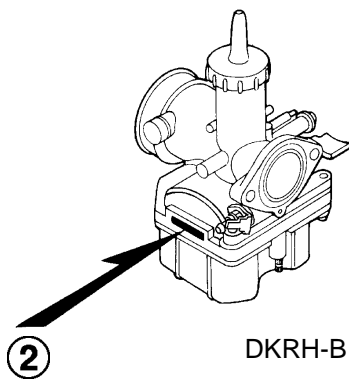
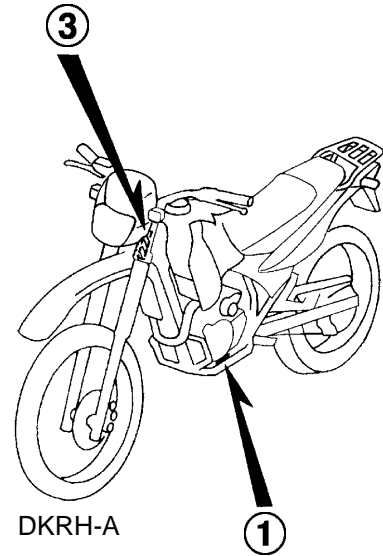
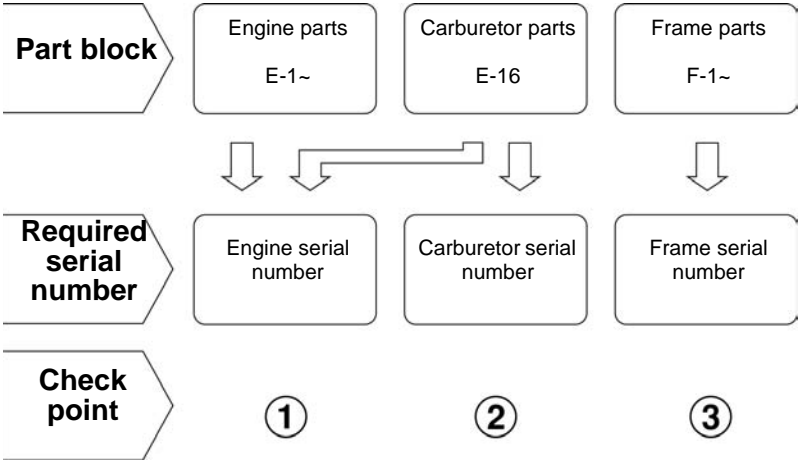
The parts listed with "###" at the end of the parts name have limited supply period (parts not for sale).

* "L." or "R." in the description of a part stands for the LEFT hand side or the RIGHT hand side. Determine the left or right as if you were in the motorcycle seat.

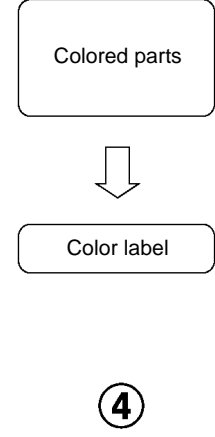
The following abbreviations are used in this parts catalogue.

- A Ampere
- ABS Anti-lock brake system
- A.C. Alternating current
- A.M. Attaching mark
- ASSY. Assembly
- C.D.I. Capacitive discharge ignition
- COMP. ... Complete
- D.C. Direct current
- EX. Exhaust
- FR. Front
- G Gram
- HEX. Hexagonal
- IN. Inlet
- KPH Kilometers per hour
- L.Left
- L (100L) .Link (100 Links)
- L.E.D.Light emitted diode
- MMMillimeter
- MPHMiles per hour
- R.Right
- RR.Rear
- STD.Standard
- T (22T) ...Tooth (22 Teeth)
- TCSTraction control system
- T.M.Transcript mark
- VVolt
- WWatt
- WLWith labelling
- WOLWithout labelling

Part block and serial number check



Color label attachment position check



Models, parts catalogue codes and applicable serial numbers

Models, parts catalogue codes and applicable serial Nos. given in this parts catalogue can be identified as follows.

Parts with parts catalogue codes are exclusive for models destined for countries designated.

If no area codes are listed, parts are for common use.

Model	Area code	Type	Applicable engine serial No.	Applicable frame serial No.	Applicable carburetor identification No.
XR125L3	E	England	JC30E-3200001~3299999	9C2JD19A03R200001~3R299999	PDN4A A
	ED	European direct sales	JC30E-3100001~3199999	9C2JD19A03R100001~3R199999	PDN4A A
	F	France	JC30E-3300001~3399999	9C2JD19A03R300001~3R399999	PDN4A A
XR125L4	E	England	JC30E-4200001~4299999	9C2JD19A04R200001~4R299999	PDN2B A
	ED	European direct sales	JC30E-4100001~4199999	9C2JD19A04R100001~4R199999	PDN2B A
	F	France	JC30E-4300001~4399999	9C2JD19A04R300001~4R399999	PDN2B A
XR125L5	E	England	JC30E-4200001~4299999	9C2JD19A05R200001~5R299999	PDN2B A
	ED	European direct sales	JC30E-4100010~4199999	9C2JD19A05R100010~5R199999	PDN2B A
	F	France	JC30E-4300001~4999999	9C2JD19A05R300001~5R999999	PDN2B A
XR125L6	E	England	JC30E-6200001~	9C2JD19A06R200001~	PDN2B A
	ED	European direct sales	JC30E-6100001~	9C2JD19A06R100001~	PDN2B A
	F	France	JC30E-6300001~	9C2JD19A06R300001~	PDN2B A

* Of carburetor/throttle body identification numbers, only the portions underlined in the example below are used for registration.

PDN4A A KC 7

Color label

- When ordering parts, check the model name, main color, and code by observing the "COLOR LABEL" on the vehicle.
- When ordering a colored part, use the color chart in the instruction for use of parts catalogue.

VFR800FIW
COLOR R-157
CODE R157

No.	MODEL		VFR800FIW				
	COLOR		Sparkling silver metallic	Mute black metallic	Applicable model		Applicable block No.
	CODE		NH-295M	NH-359M	Initial applicable model	Final applicable model	
	Name of colored parts	Basic part No.	NH295	NH359			
1							
2							
3							
4							
5							
6							
7							
8							
9							
10							