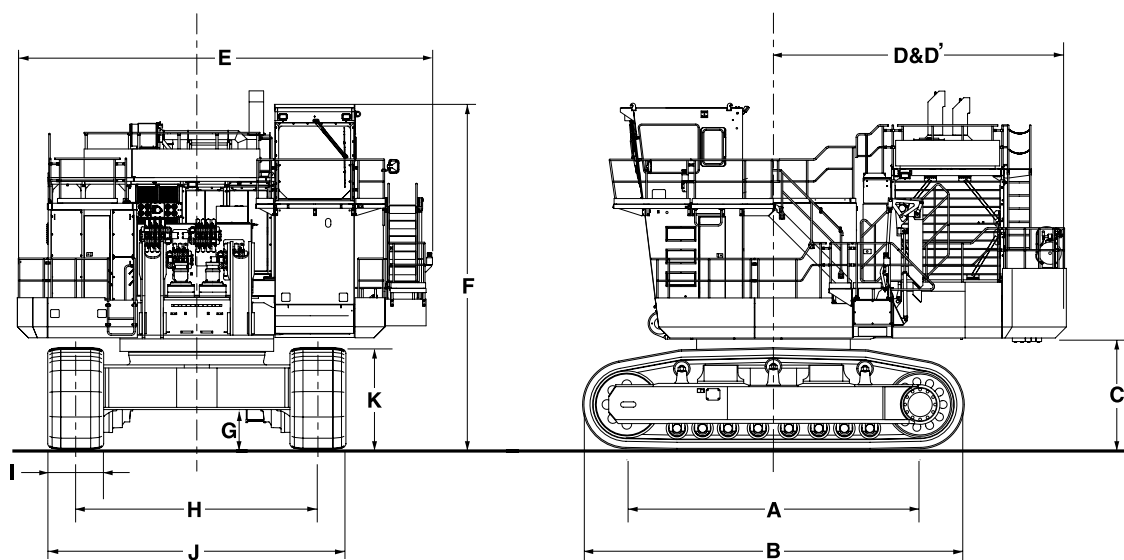


# EX3600

## Specifications



Illustrations show diesel engine type.

A	Distance between tumblers	6 660 mm
B	Undercarriage length	8 700 mm
C	Counterweight clearance	2 440 mm
D	Rear-end swing radius	6 780 mm
D'	Rear-end length	6 650 mm
E	Overall width of upperstructure	9 420 mm
F	Overall height of cab	7 830 mm
G	Minimum ground clearance	905 mm
H	Track gauge	5 500 mm
I	Track shoe width	1 270 mm
J	Undercarriage width	6 770 mm
K	Track height	2 305 mm

### HYDRAULIC EXCAVATOR

**■ EX3600-6 with Diesel Engine**

Engine Gross Power : 1 450 kW (1 944 HP)

Operating Weight : Loading Shovel : 362 000 kg  
Backhoe: 359 000 kg**■ EX3600E-6 with Electric Motor**

Power Output : 1 200 kW

Operating Weight : Loading Shovel : 353 000 kg

**■ Bucket Capacity**Loading Shovel Bucket : Heaped : 21.0 m<sup>3</sup> - 23.0 m<sup>3</sup>Backhoe Bucket : SAE, PCSA Heaped : 22.0 m<sup>3</sup> CECE Heaped : 19.2 m<sup>3</sup>