

9308137

Parts Manual

FOR SERIES

C-12B

Hydraulic Backhoes

SERIAL NO. _____

NOTE:

The parts pages are intended for use in ordering parts, and therefore do not always depict the correct way to assemble components.



CONSTRUCTION EQUIPMENT DIVISION
WAUKESHA, WISCONSIN 53186

ABOUT THIS MANUAL

This manual uses a new page numbering system designed to indicate page revisions, corrections and additions at a glance.

As in the past, the book is divided into major categories or sections (Cylinders, Valves, etc.) which are marked with an index tab sheet. Pages are numbered consecutively within each section, using a multi-part page number (for example: PAGE 1-00A, PAGE 2-02, PAGE 3-01B, etc.)

BASE PAGE NUMBER

CORRECTION

PAGE 1-02 B

PAGE REVISION

The page number consists of three parts---a BASE PAGE NUMBER (PAGE 1, PAGE 2, PAGE 3); a two-digit code (-00, -01, -02) that indicates PAGE REVISIONS; and a letter (A, B, C, D) that is used only when a page CORRECTION has been made.

A simulated series of changes shows how the system would work on a hypothetical PAGE 1:

- * PAGE 1-00 Original Page starting with machine SN 12-2900 7/10/78
- PAGE 1-01 Revision SN 12-2950 12/11/78
Indicates a change to machine based on engineering, design or purchasing changes such as a new style pump drive or different cylinders. Serial Number 2950 indicates that the change began with that machine.
- PAGE 1-01A Correction of Revision SN 12-2950 12/11/78
Use of letter "A" behind number indicates that this page supersedes 1-01 (which should be discarded) because it corrects a typographical error on the sheets or adds information that doesn't affect the design of the machine. The serial number doesn't change because this new page shows only corrections, not machine changes.
- * PAGE 1-01B Correction of Revision SN 12-2950 12/11/78
Letter "B" indicates that this page supersedes 1-01A (which should be discarded).
- * PAGE 1-02 Revision SN 12-3000 3/15/79
A second revision of machine beginning with machine number 12-3000.

In the examples above, the number codes (-01 and -02) indicate that there were two machine changes since machine #2900 when the manual was set up. The letters (A and B) are used only when a correction is made, making it easy to identify the most correct page (the highest letter, or "B" in this case.)

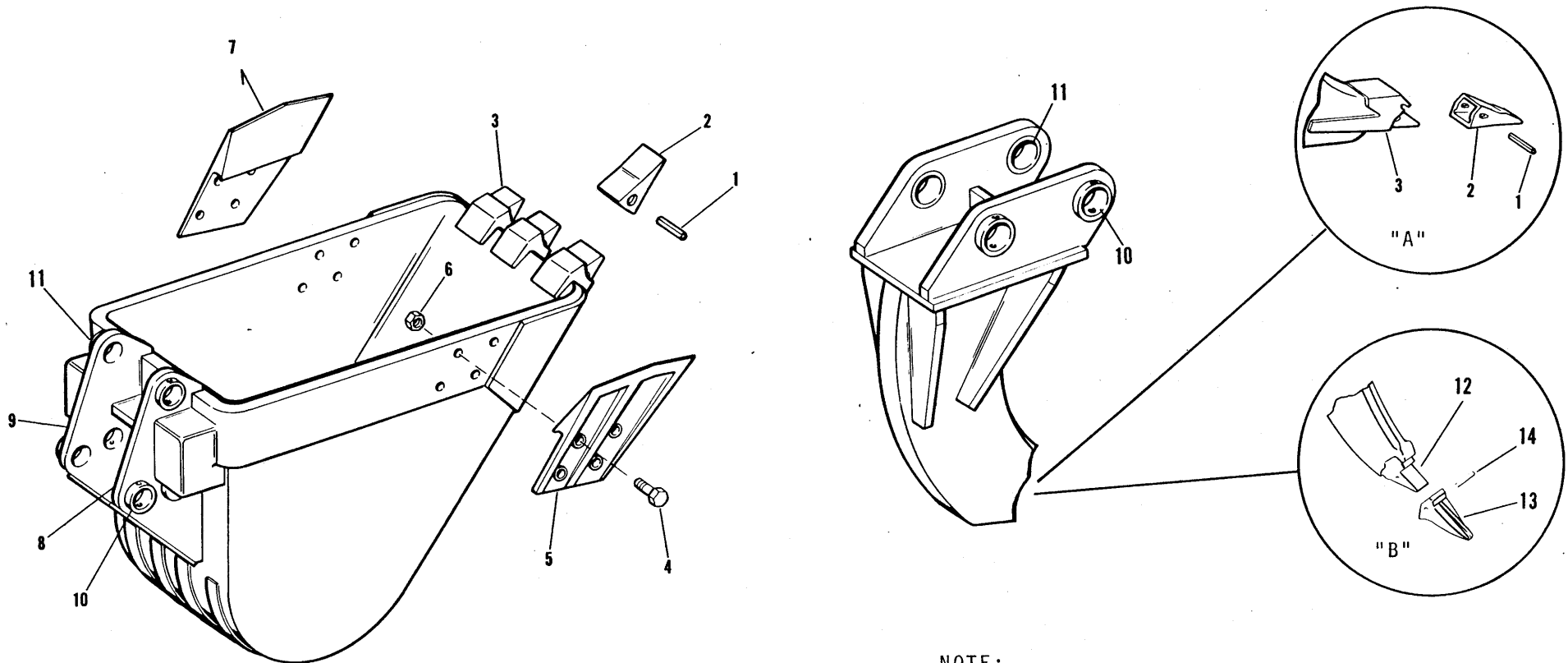
A customer with a new machine (# 12-3001, for example) would receive only page 1-02 since it would contain the latest machine information.

A Master Manual would contain all the corrected pages (with asterisks) showing the three different machine styles: PAGES 1-00, 1-01B, 1-02.

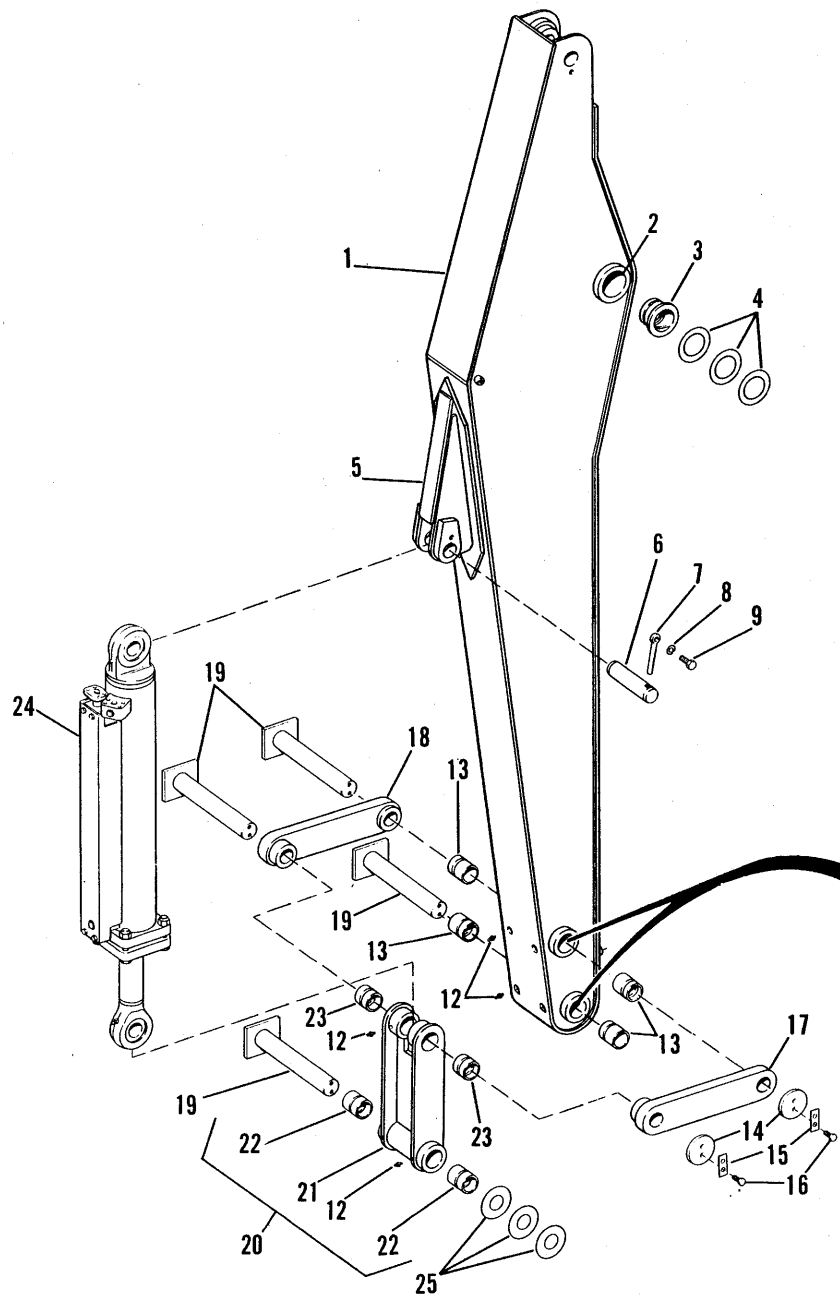
Note: All pages in this book are effective as of machine #2900 unless otherwise indicated by a serial number break. Some parts may have been in use on earlier machines.

ITEM	PART NUMBER	DESCRIPTION	QTY
1	401158	Pin-25 Series	As Req'd
2	401160	Point-25 Series	As Req'd
3	401156	Shank-25 Series	As Req'd
4	400195	Bolt (3/4-16 X 3¼ Gr 5)	8
5	150156	R.H. Side Cutter	1
6	400017	Nut	8
7	150155	L.H. Side Cutter	1
8	990045	L.H. Hinge Plate w/Bosses	1

ITEM	PART NUMBER	DESCRIPTION	QTY
9	990044	R.H. Hinge Plate w/Bosses	1
10	120008	Boss w/Hole	As Req'd
11	120010	Boss	As Req'd
12	150670	Shank	1
13	150668	Tooth-Impact Resist. (Blue)	1
	150714	Tooth-Abrasion Resist. (Red)	1
14	150669	Pin	1



NOTE:
 Frostpoints bought through March 31, 1978 use "A"
 Frostpoints bought after April 1, 1978 use "B"



ITEM	PART NUMBER	DESCRIPTION	QTY
1	110443	Long Dipstick (11'1")	1
	110552	Short Dipstick (9'5")	1
2	110330	Housing	1
3	220068	Bushing	2
4	100490	Shim (7 Gauge)	As Req'd
	100491	Shim (12 Gauge)	As Req'd
	100492	Shim (18 Gauge)	As Req'd
5	110440	Mounting Bracket (Long Stick)	1
	110561	Mounting Bracket (Short Stick)	1
6	210314	Pin	1
7	401204	Pin Retainer	1
8	400423	Lockwasher	1
9	400441	Bolt (5/8-18 X 1 3/4 Gr 5)	1
10	110442	Housing Assembly (wo/Bushings)	1
11	110441	Housing (wo/Bushings)	2
12	400015	Grease Fitting	8
13	220179	Bushing	4
14	210350	Retainer Plate	4
15	401417	Lock Plate	4
16	400307	Bolt (1/2-20 X 1 1/4 Gr 5)	8
17	150651	Bell Crank R.H.	1
18	150706	Bell Crank L.H.	1
19	210349	Pin	4
20	150719	16" Bucket Link (w/Bushings)	1
	150720	14" Bucket Link (w/Bushings)	1
21	150658	16" Bucket Link Only	1
	150703	14" Bucket Link Only	1
22	220028	Bushing	2
23	220176	Bushing	2
24	040978	Bucket Cylinder Assembly	1
25	100493	Shim (7 Gauge)	As Req'd
	100494	Shim (12 Gauge)	As Req'd
	100495	Shim (18 Gauge)	As Req'd

DIPSTICK AND LINKAGE

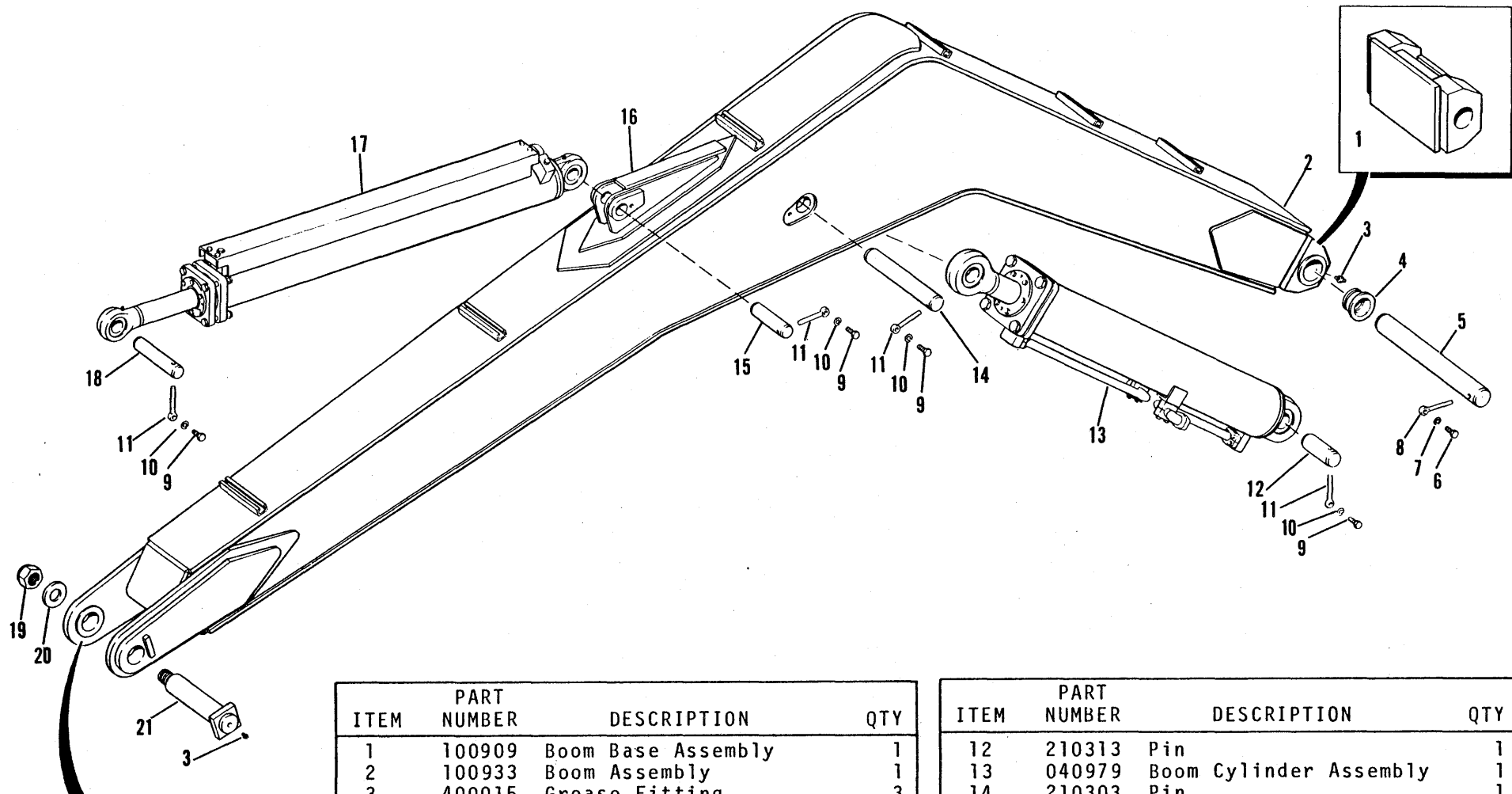
ATTACHMENT

EFFECTIVE

SN 12-2900

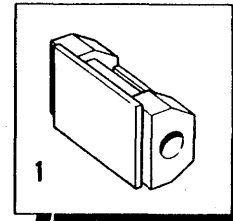
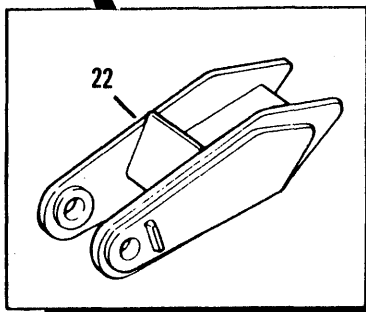
Date July 10, 1978

PAGE 2-00A



ITEM	PART NUMBER	DESCRIPTION	QTY
1	100909	Boom Base Assembly	1
2	100933	Boom Assembly	1
3	400015	Grease Fitting	3
4	220068	Bushing	2
5	210320	Pin	1
6	400299	Bolt (7/8-14 X 2 Gr 5)	1
7	400204	Lockwasher	1
8	401206	Pin Retainer	1
9	400441	Bolt (5/8-18 X 1 3/4 Gr 5)	3
10	400423	Lockwasher	3
11	401204	Pin Retainer	3

ITEM	PART NUMBER	DESCRIPTION	QTY
12	210313	Pin	1
13	040979	Boom Cylinder Assembly	1
14	210303	Pin	1
15	210314	Pin	1
16	110440	Mounting Bracket	1
17	040977	Dipstick Cylinder Assembly	1
18	210315	Pin	1
19	401386	Locknut	1
20	210112	Spacer	1
21	210270	Pin	1
22	100456	Boom Point	1

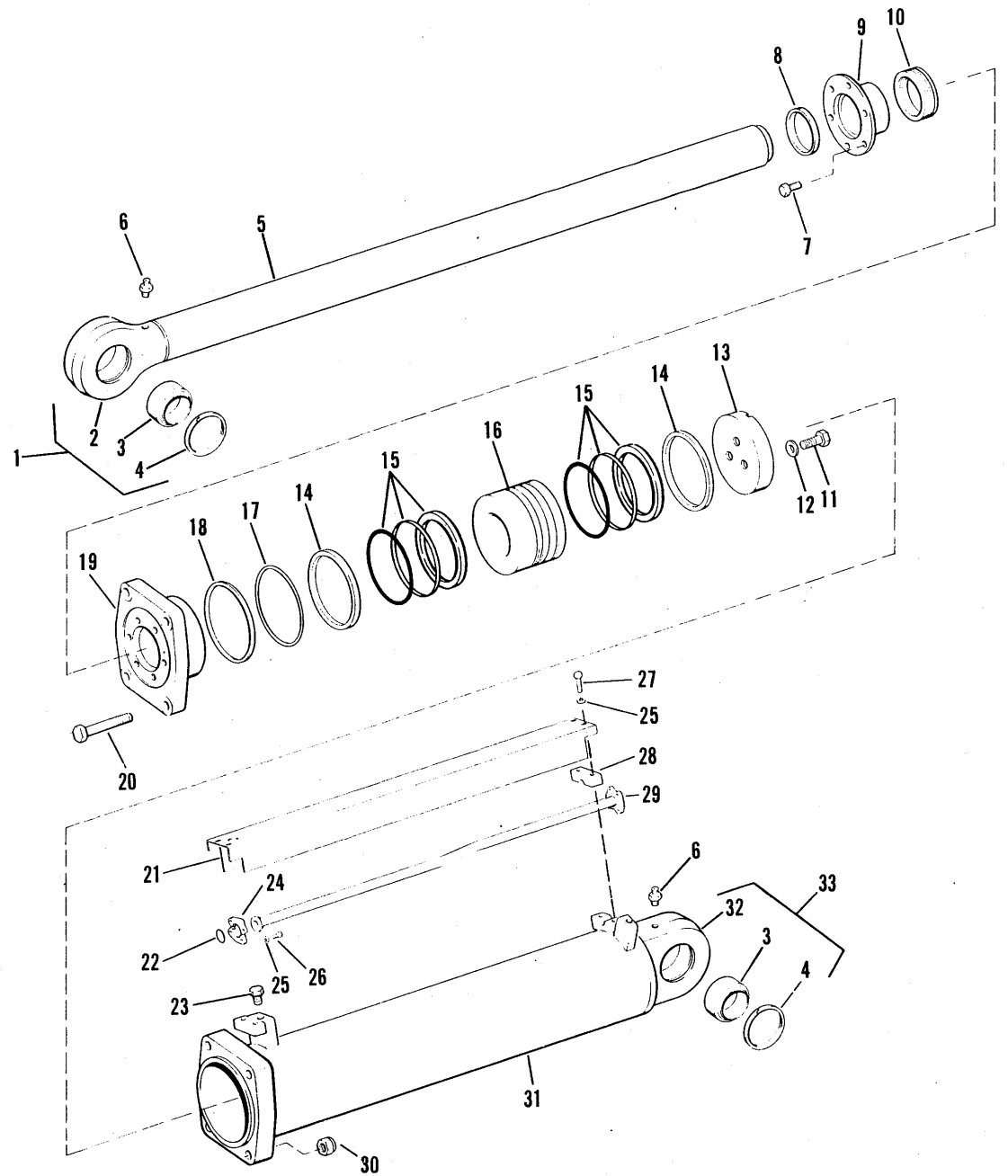


ITEM	PART NUMBER	DESCRIPTION	QTY
1	041104	Rod End w/Bushing	1
2	040966	Rod End Only	1
3	220175	Bushing	2
4	401261	Snap Ring	4
5	040949	Rod Assembly	1
6	400015	Grease Fitting	2
7	401262	Bolt (3/8-16 X 1 Gr 5-drilled)	6
8	010181	Rod Wiper	1
9	040902	Rod Guide	1
10	010184	Packing	1
11	401316	Bolt (3/4-16 X 3 1/4 Gr 8)	3
12	400756	Washer	3
13	041024	Butt Plate	1
14	010027	Piston Ring	2
15	010223	Piston Ring Set (3 parts)	2
16	040961	Piston	1
17	010128	O-Ring	1
18	010187	Back-up Ring	1
19	040969	Head	1
20	401379	Bolt (3/4-16 X 4 Gr 8)	4
21	040976	Guard	1
22	010103	O-Ring	1
23	020492	Plug	2
24	400666	Flange	2
25	400023	Lockwasher	8
26	400022	Bolt (3/8-16 X 1 1/4 Gr 5)	4
27	400036	Bolt (3/8-16 X 2 Gr 5)	4
28	400693	Clamp	1
29	031984	Tube	1
30	400422	Locknut	4
31	040958	Cylinder Body	1
32	040963	Base Only	1
33	041103	Base w/Bushing	1

Note: Order Part No. 040972 for Cylinder Assembly without tube, clamp, and guard.

CYLINDER SERVICE KIT

Includes Items 8, 10, 14, 15, 17, 18, 22
Order Part # 452746



BUCKET CYLINDER (040978)

CYLINDERS

EFFECTIVE

SN 12-2900

Date July 10, 1978

PAGE 1-00

Hein-Werner

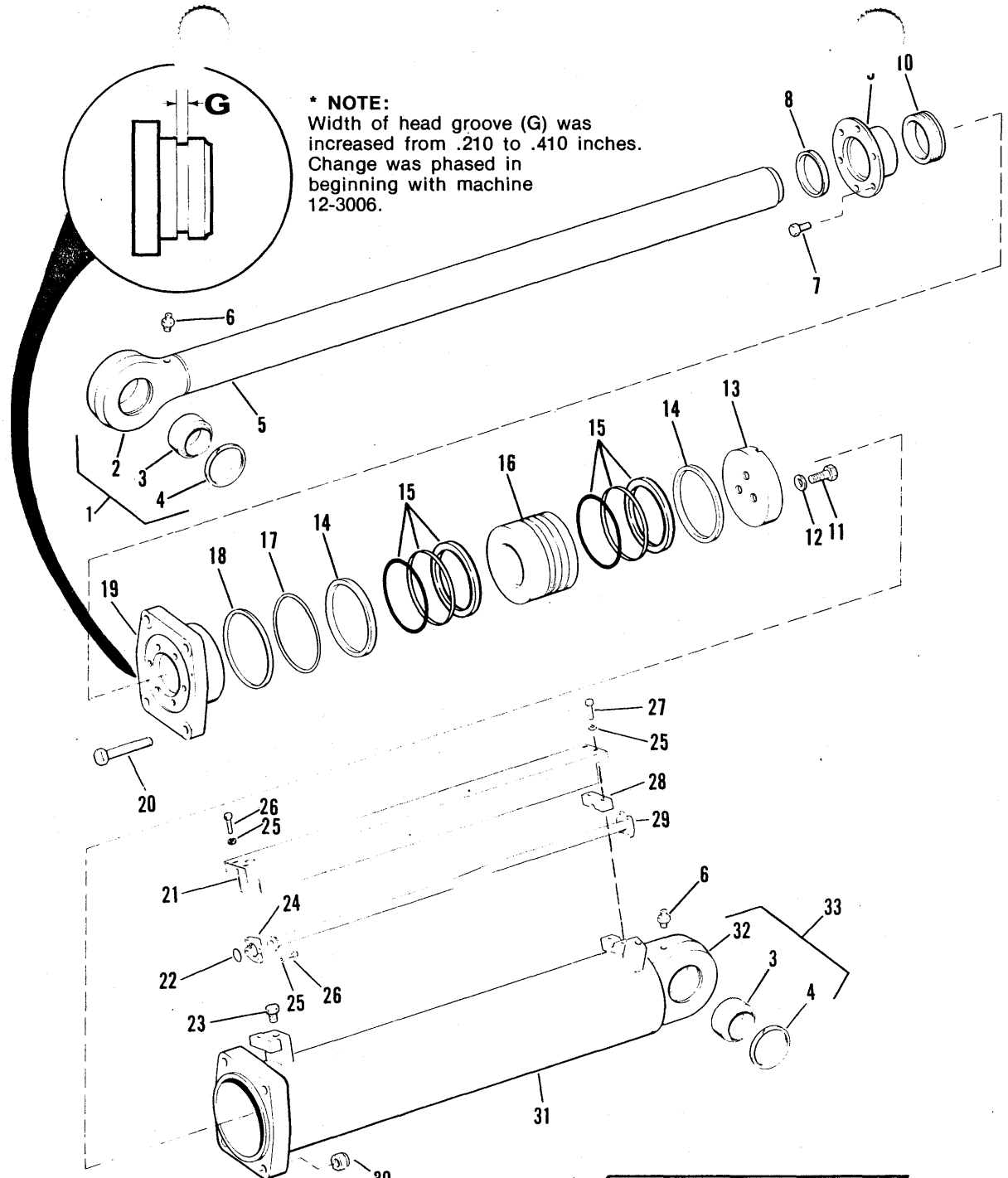
ITEM	PART NUMBER	DESCRIPTION	QTY
1	041104	Rod End w/Bushing	1
2	040966	Rod End Only	1
3	220175	Bushing	2
4	401261	Snap Ring	4
5	040949	Rod Assembly wo/Bushing	1
6	400015	Grease Fitting	2
7	401262	Bolt (3/8-16 X 1 Gr 5-drilled)	6
8	010181	Rod Wiper	1
9	040902	Rod Guide	1
10	010184	Packing	1
11	401316	Bolt (3/4-16 X 3½ Gr 8)	3
12	400756	Washer	3
13	041024	Butt Plate	1
14	010027	Piston Ring	2
15	010223	Piston Ring Set (3 parts)	2
16	040961	Piston	1
17	010228*	O-Ring (for .410 groove)	1
18	010233*	Back-up Ring (for .410)	1
19	040969	Head	1
20	401379	Bolt (3/4-16 X 4 Gr 8)	4
21	040976	Guard	1
22	010103	O-Ring	1
23	020492	Plug	2
24	400666	Flange	2
25	400023	Lockwasher	10
26	400022	Bolt (3/8-16 X 1½ Gr 5)	6
27	400036	Bolt (3/8-16 X 2 Gr 5)	4
28	400693	Clamp	1
29	031984	Tube	1
30	400422	Locknut	4
31	040958	Cylinder Body wo/Bushing	1
32	040963	Base Only	1
33	041103	Base w/Bushing	1

Note: Order Part No. 040972 for Cylinder Assembly without tube, clamp, and guard.

CYLINDER SERVICE KIT

Includes Items 8, 10, 14, 15, 17, 18, 22
Order Part # 452986

* Check head groove before ordering parts.
[See note above.]



BUCKET CYLINDER (040978)

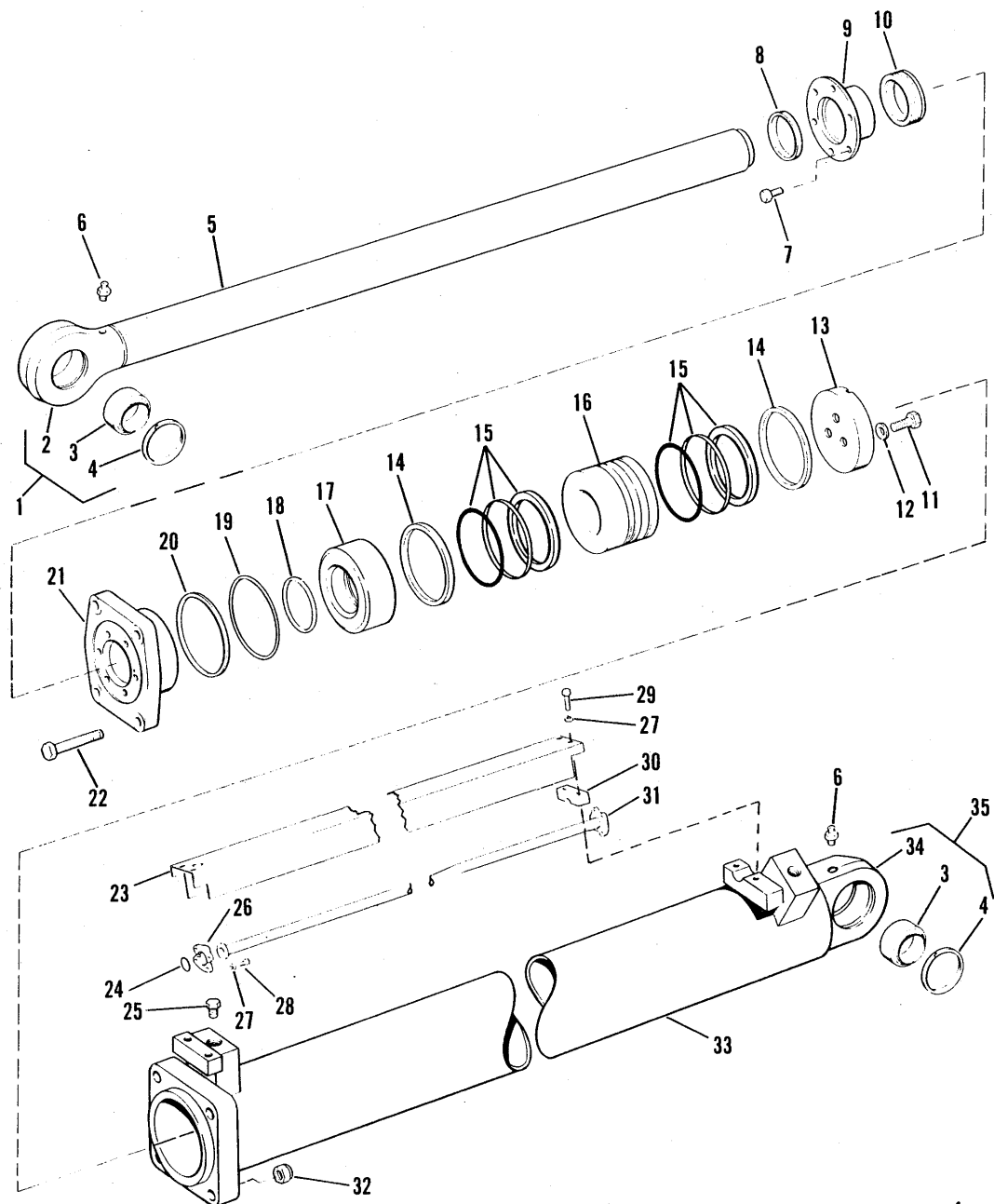
EFFECTIVE

SN 12-3006
Date July 31, 1979

ITEM	PART NUMBER	DESCRIPTION	QTY
1	041104	Rod End w/Bushing	1
2	040966	Rod End Only	1
3	220175	Bushing	2
4	401261	Snap Ring	4
5	040948	Rod Assembly	1
6	400015	Grease Fitting	2
7	401262	Bolt (3/8-16 X 1 Gr 5-drilled)	6
8	010181	Rod Wiper	1
9	040902	Rod Guide	1
10	010184	Packing	1
11	401316	Bolt (3/4-16 X 3 1/2 Gr 8)	3
12	400756	Washer	3
13	041024	Butt Plate	1
14	010027	Piston Ring	2
15	010223	Piston Ring Set (3 parts)	2
16	040961	Piston	1
17	041039	Spacer	1
18	010092	O-Ring (Spacer)	1
19	010128	O-Ring (Head)	1
20	010187	Back-up Ring	1
21	040969	Head	1
22	401379	Bolt (3/4-16 X 4 Gr 8)	4
23	040975	Guard	1
24	010104	O-Ring	1
25	020492	Plug	2
26	400459	Flange	2
27	400023	Lockwasher	8
28	400022	Bolt (3/8-16 X 1 1/2 Gr 5)	4
29	400036	Bolt (3/8-16 X 2 Gr 5)	4
30	401263	Clamp	1
31	031981	Tube	1
32	400422	Locknut	4
33	040957	Cylinder Body	1
34	040963	Base Only	1
35	041103	Base w/Bushing	1

Note: Order Part No. 040971 for Cylinder Assembly without tube, clamp, and guard.

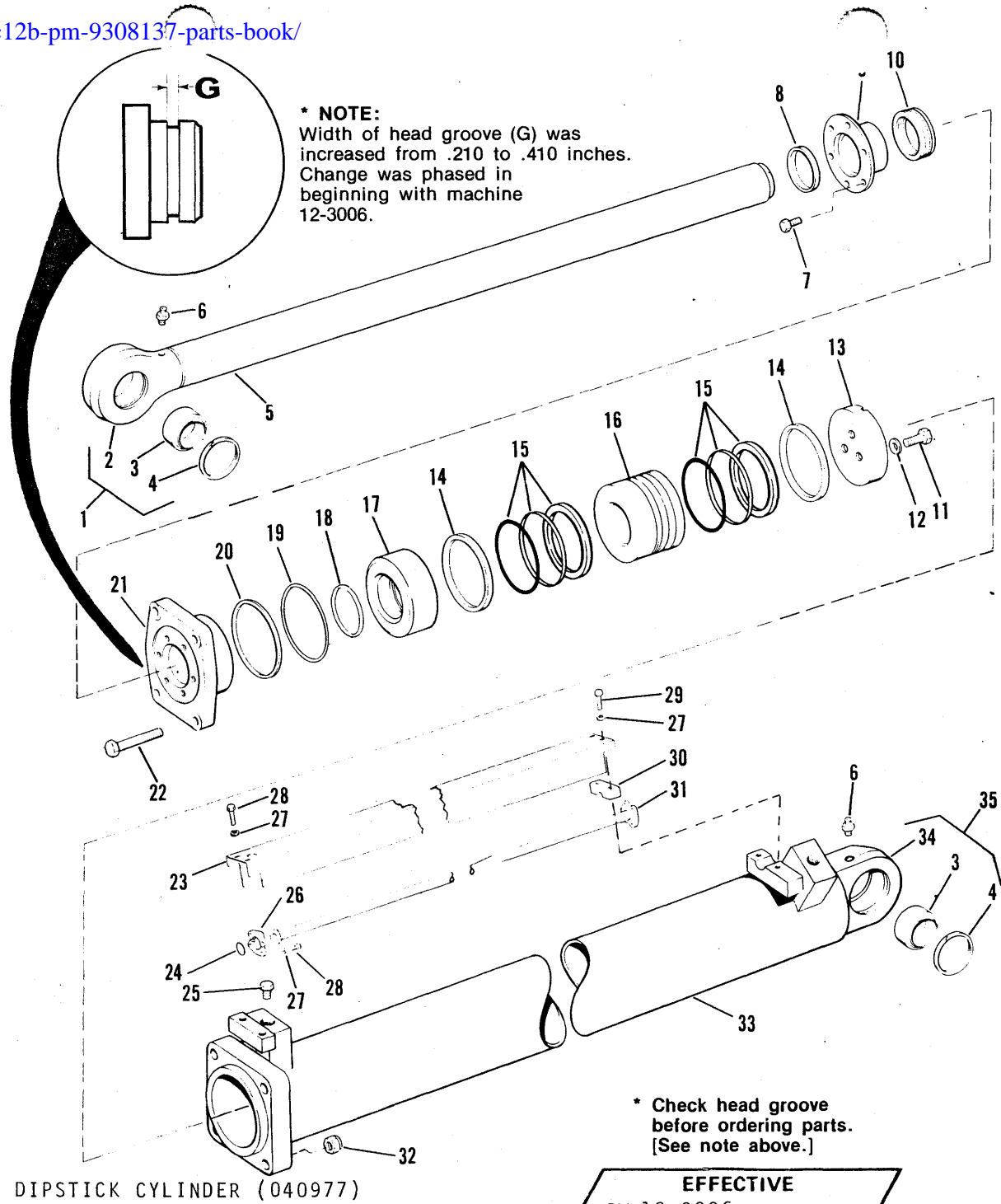
CYLINDER SERVICE KIT
Includes Items 8, 10, 14, 15, 18, 19, 20, 24
Order Part # 452747



ITEM	PART NUMBER	DESCRIPTION	QTY
1	041104	Rod End w/Bushing	1
2	040966	Rod End Only	1
3	220175	Bushing	2
4	401261	Snap Ring	4
5	040948	Rod Assembly wo/Bushing	1
6	400015	Grease Fitting	2
7	401262	Bolt (3/8-16 X 1 Gr 5-drilled)	6
8	010181	Rod Wiper	1
9	040902	Rod Guide	1
10	010184	Packing	1
11	401316	Bolt (3/4-16 X 3 1/2 Gr 8)	3
12	400756	Washer	3
13	041024	Butt Plate	1
14	010027	Piston Ring	2
15	010223	Piston Ring Set (3 parts)	2
16	040961	Piston	1
17	041039	Spacer	1
18	010092	Spacer O-Ring	1
19	010228*	Head O-Ring (.410 groove)	1
20	010233*	Back-up Ring (for .410)	1
21	040969	Head	1
22	401379	Bolt (3/4-16 X 4 Gr 8)	4
23	040975	Guard	1
24	010104	O-Ring	1
25	020492	Plug	2
26	400459	Flange	2
27	400023	Lockwasher	10
28	400022	Bolt (3/8-16 X 1 1/2 Gr 5)	6
29	400036	Bolt (3/8-16 X 2 Gr 5)	4
30	401263	Clamp	1
31	031981	Tube	1
32	400422	Locknut	4
33	040957	Cylinder Body wo/Bushing	1
34	040963	Base Only	1
35	041103	Base w/Bushing	1

Note: Order Part No. 040971 for Cylinder Assembly without tube, clamp, and guard.

CYLINDER SERVICE KIT
Includes Items 8, 10, 14, 15, 18, 19, 20, 24
Order Part # 452987



DIPSTICK CYLINDER (040977)

EFFECTIVE
SN 12-3006
Date July 31, 1979

