

**H75C**

**HANIX**  
Mini Excavators



# Parts Catalogue

Japanese Craftsmanship



## How to Use Parts Catalogue

1. This parts catalogue covers all components for excavator model NS75-3 when ordering parts refer to the under mentioned items.

2. To read the parts catalogue:

- a) Parts marked with \* are composed of assembly parts, ☆ shows component parts.
- b) Originally the parts are shown in essential numbers for unit machine in the column, however, the component parts are meant for unit.
- c) Parts marked with O in the parts No. column are not supplied by single piece but are supplied in components are assembly.
- d) Marks appearing in the column of interchangeability are as follows:

A..... New parts can take place of old parts, but no vice-versa.

B..... No interchangeability between new and old parts.

C..... Discontinued.

D..... Newly added parts.

E..... Both new and old parts applicable.

Q..... Quantity altered.

- e) In the column of applicable machines are shown the machine serial numbers for which the parts in the same column are used.

The year and month appearing there instead of machine serial number means the time of alteration.

- f) Standards and dimentions of parts are shown in the remarks column.  
Note "Inc. ~" in case of supply in assembly.
- g) In case of ——— line is drawn on the part number, replace that part with the part below.
- h) The abbreviations have meaning as follows:

ASSY.....ASSEMBLY

ASS'Y..... ASSEMBLY

HYD..... HYDRAULIC

H..... HEAD

CYL..... CYLINDER

COUN..... COUNTER

VALA..... VALANCE

J..... JOINT

## INDEX

### WORK EQUIPMENT

A11	:	WORK EQUIPMENT (1) .....	2
A12	:	WORK EQUIPMENT (2) .....	4

### UPPER FRAME

B10	:	SWING FRAME .....	10
B15	:	FLOOR PLATE .....	14
B20	:	CONTROL SYSTEM (1) .....	18
B21	:	CONTROL SYSTEM (2) .....	20
B22	:	CONTROL SYSTEM (3) .....	22
B24	:	CONTROL SYSTEM (4) .....	26
B30	:	TANK UNIT .....	30
B40	:	ENGINE COVER .....	34
B61	:	CABIN(1) .....	40
B62	:	CABIN(2) .....	46

### LOWER MACHINE

C11	:	TRACK FRAME (1) .....	52
C12	:	TRACK FRAME (2) .....	56

### POWER UNIT

D21	:	POWER UNIT (1) .....	64
D22	:	POWER UNIT (2).....	68
D23	:	POWER UNIT (3) .....	72
D24	:	POWER UNIT (4) .....	74

### HYDRAULIC PIPING

E10	:	WORK EQUIPMENT PIPING(1)	.....78
E12	:	WORK EQUIPMENT PIPING(2)	.....82
E21	:	UPPER FRAME PIPING(1)	.....84
E22	:	UPPER FRAME PIPING(2)	.....86
E23	:	UPPER FRAME PIPING(3)	.....88
E24	:	UPPER FRAME PIPING(4)	.....92
E25	:	UPPER FRAME PIPING(5)	.....96
E26	:	UPPER FRAME PIPING(6)	.....98
E27	:	UPPER FRAME PIPING(7)	.....100
E30	:	CHASSIS FRAME PIPING	.....102

## HYDRAULIC COMPONENT

F11	:	CONTROL VALVE(1)	.....106
F12	:	CONTROL VALVE(2)	.....110
F20	:	BOOM CYLINDER	.....114
F22	:	ARM CYLINDER	.....118
F24	:	BUCKET CYLINDER	.....122
F26	:	SWING CYLINDER	.....124
F28	:	DOZER CYLINDER	.....126
F40	:	SWIVEL JOINT	.....128
F45	:	PUMP	.....130
F50	:	DRIVE MOTOR	.....132
F55	:	TURNING MOTOR	.....136
F61	:	HYDRAULIC COMPONENT(1)	.....138
F62	:	HYDRAULIC COMPONENT(2)	.....142
F63	:	HYDRAULIC COMPONENT(3)	.....146

F64	:	HYDRAULIC COMPONENT(4)	.....148
-----	---	------------------------	----------

## **ELECTRIC SYSTEM**

G10	:	ELECTRIC SYSTEM(1)	.....152
G12	:	ELECTRIC SYSTEM(2)	.....156

## **LABEL**

H10	:	LABEL	.....160
-----	---	-------	----------

## **OPTION**

J11	:	OPTION BUCKET	.....164
J12	:	LONG ARM	.....168
J21	:	J/D PATTERN PIPING	.....170
J25	:	SLIDING CONSOLE	.....172
J31	:	HOLDING VALVE, BOOM	.....174
J32	:	BOOM CYLINDER	.....176
J36	:	RADIO	.....180
J37	:	SEAT WITH SEAT BELT WINDING TYPE	.....182
J40	:	2-PIECE BOOM(OPTION)	.....184
J41	:	2-PIECE BOOM(OPTION)	.....188
J42	:	2-PIECE BOOM(OPTION)	.....192
J44	:	2-PIECE BOOM(OPTION) 2ND CYL	.....196

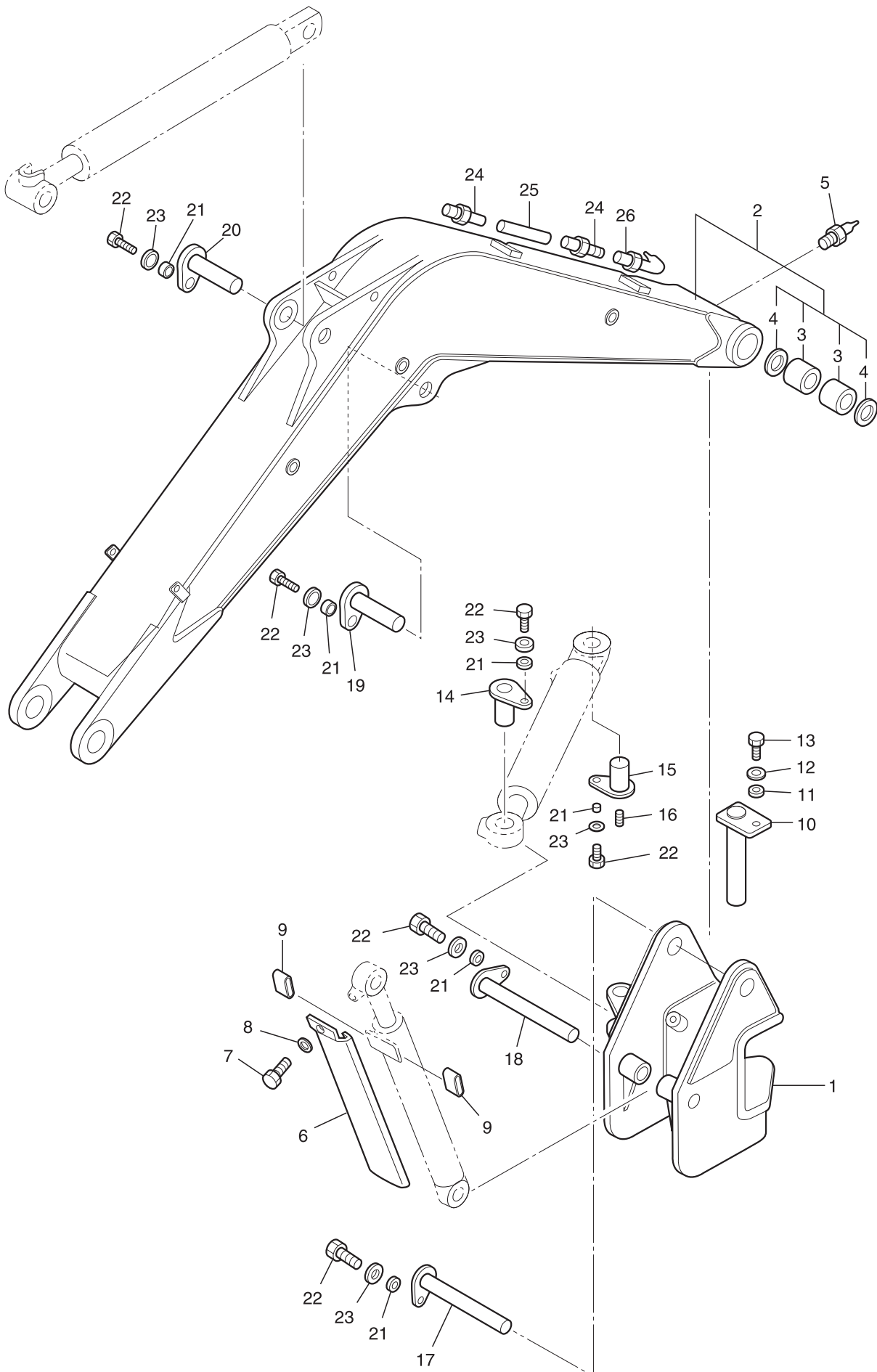
## **ACCESSORY PARTS**

K10	:	TOOLS	.....200
-----	---	-------	----------

## **WORK EQUIPMENT**

WORK EQUIPMENT(1)

A11





## WORK EQUIPMENT(1)

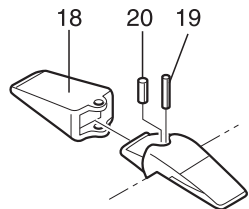
A11

SER. No:H7530050 ~ 9999

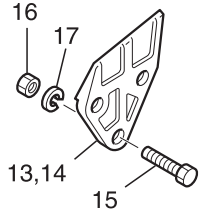
Key No.	Part No.	Interchange-ability	Part Name	Q.ty	Applicable Ser. No.	Remarks
1	NSS3-11000-5		SWING POST ASS'Y	1		
◇2	NSS3-21000-6		BOOM ASS'Y	1		INC. 3, 4
*3	NSS3-21028		BUSH	2		
*4	0493-70085-h		SEAL, DUST	2		
5	0540-02000-F		NIPPLE, GREASE	1		
6	NSS3-00001		COVER, BOOM CYL	1		
7	0103-12020-a		BOLT	1		
8	0389-12000-a		WASHER, H	1		
9	NRS3-00004		TUBE, VINYL	2		
10	NSS3-60100-2		PIN	1		
11	HCA3-60001		COLLAR	1		
12	HCA3-60004		WASHER	1		
13	0103-16040-a		BOLT	1		
14	NSS3-60300		PIN	1		
15	NSS3-60200		PIN	1		
16	0545-02000-h		PLUG, SUNK	1		
17	NSS3-60400-1		PIN	1		
18	NSS3-60500-1		PIN	1		
19	NSS3-60600		PIN	1		
20	NSS3-60700		PIN	1		
21	NSS3-60002		COLLAR	6		
22	0103-12025-a		BOLT	6		
23	NSS3-60001		WASHER	6		
24	0730-02004-0		CONNECTOR	2		
25	0754-04120-0		TUBE, GREASE	1		
26	0542-02000-F		NIPPLE, GREASE	1		

WORK EQUIPMENT(2)

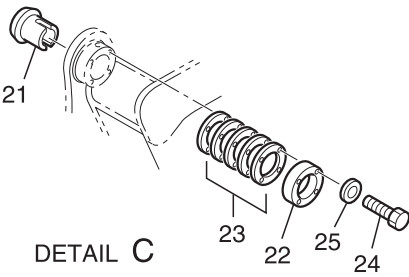
$\phi 71-t0.5$ 44	$\phi 61-t0.5$ 41
$\phi 71-t1.0$ 45	$\phi 61-t1.0$ 42
$\phi 71-t1.6$ 46	$\phi 61-t1.6$ 43



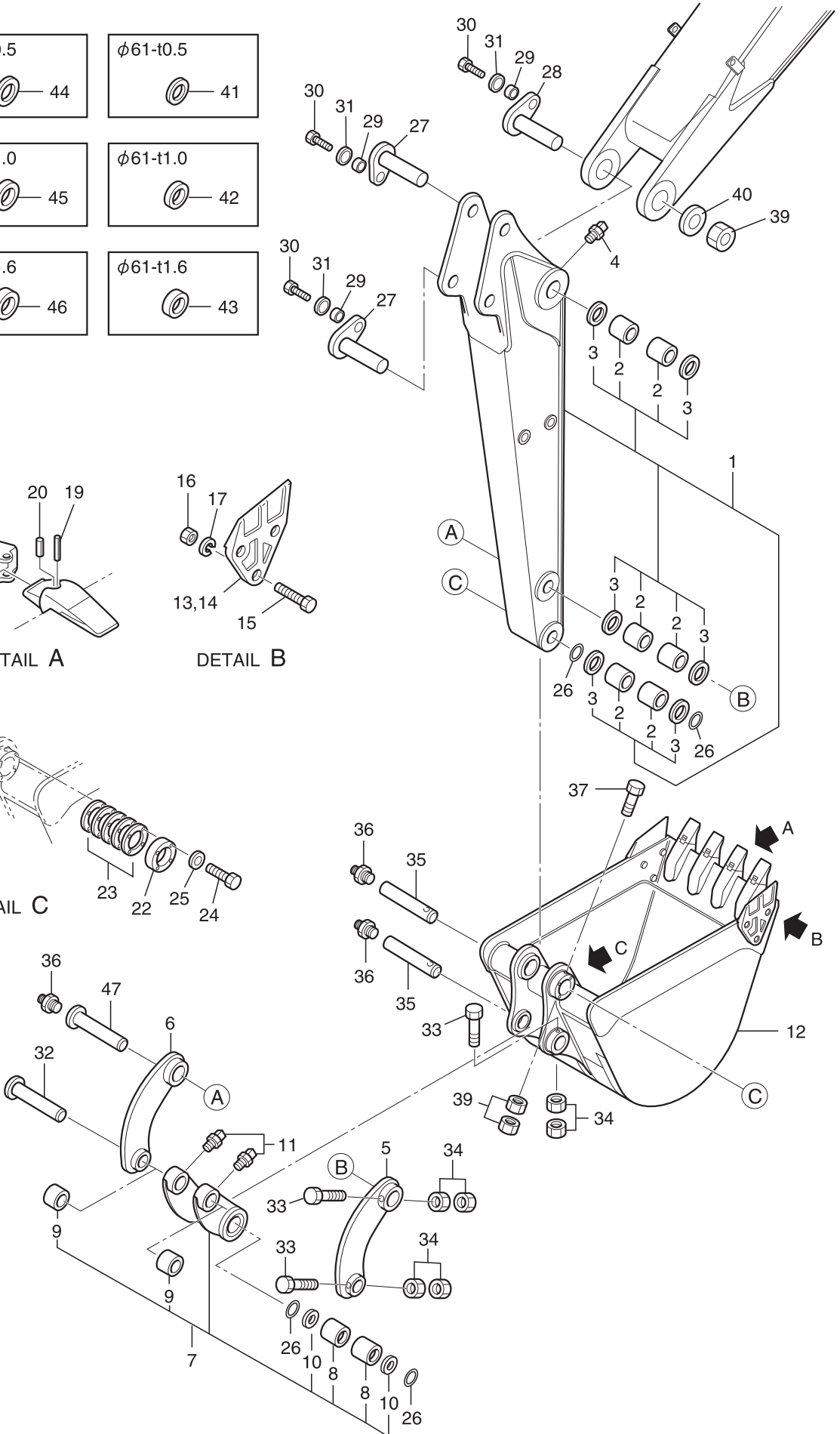
DETAIL A



DETAIL B



DETAIL C



## WORK EQUIPMENT(2)

A12

SER. No:H7530050 ~ 9999

Key No.	Part No.	Interchange-ability	Part Name	Q.ty	Applicable Ser. No.	Remarks
1	NSS3-34000		ARM ASS'Y	1		INC. 2, 3
*2	NSS3-31015		BUSH	6		
*3	0493-60075-h		SEAL, DUST	6		
4	0540-02000-F		NIPPLE, GREASE	1		
5	NSS3-40200-3		LINK, BUCKET(L) ASS'Y	1		
6	NSS3-40100-3		LINK, BUCKET(R) ASS'Y	1		
◇7	NSS3-40300-2		DUMP LINK ASS'Y	1		INC. 8, 9
*8	NSS3-31015		BUSH	2		
*9	NSS3-40305		BUSH	2		
10	0493-60075-h		SEAL, DUST	2		
11	0542-02000-F		NIPPLE, GREASE	2		
◇12	NSS3-51000-5		BUCKET ASS'Y	1		INC. 13~20
*13	073320019		CUTTER, SIDE(R)	1		
*14	073320020		CUTTER, SIDE(L)	1		
*15	0104-16040-c		BOLT	6		
*16	0251-16000-a		NUT	6		
*17	0381-16000-a		WASHER, SPRING	6		
*18	952-36001-1		TOOTH	4		
*19	952-40001-1		PIN	4		
*20	952-50001-1		RUBBER	4		
21	NSS3-60006		BUSH, SLIDE(A)	1		
22	NSS3-60004		COVER	1		
23	NSS3-60012		SPACER	AR		
24	0103-10030-a		BOLT	4		
25	0389-10000-a		WASHER, H	4		
26	S022-00021		O-RING	4		

## WORK EQUIPMENT(2)

A12

SER. No:H7530050 ~ 9999

Key No.	Part No.	Interchange-ability	Part Name	Q.ty	Applicable Ser. No.	Remarks
27	NSS3-60800-1		PIN	2		
28	NSS3-60900-1		PIN	1		
29	NSS3-60002		COLLAR	3		
30	0103-12030-a		BOLT	3		
31	NSS3-60001		WASHER	3		
32	NSS3-61100-1		PIN	1		
33	0103-12110-a		BOLT	3		
34	0251-12000-a		NUT	6		
35	NSS3-61200		PIN	2		
36	0540-02000-F		NIPPLE, GREASE	3		
37	0103-12165-a		BOLT	1		
38	0251-12000-a		NUT	2		
39	0294-42000-a		U NUT	1		
40	NSS3-60003		WASHER	1		
41	NSS3-60005		SHIM	AR		Ø61-t0.5
42	NSS3-60007		SHIM	AR		Ø61-t1.0
43	NSS3-60008		SHIM	AR		Ø61-t1.6
44	NSS3-60009		SHIM	AR		Ø71-t0.5
45	NSS3-60010		SHIM	AR		Ø71-t1.0
46	NSS3-60011		SHIM	AR		Ø71-t1.6
47	NSS3-61300		PIN	1		

MEMO

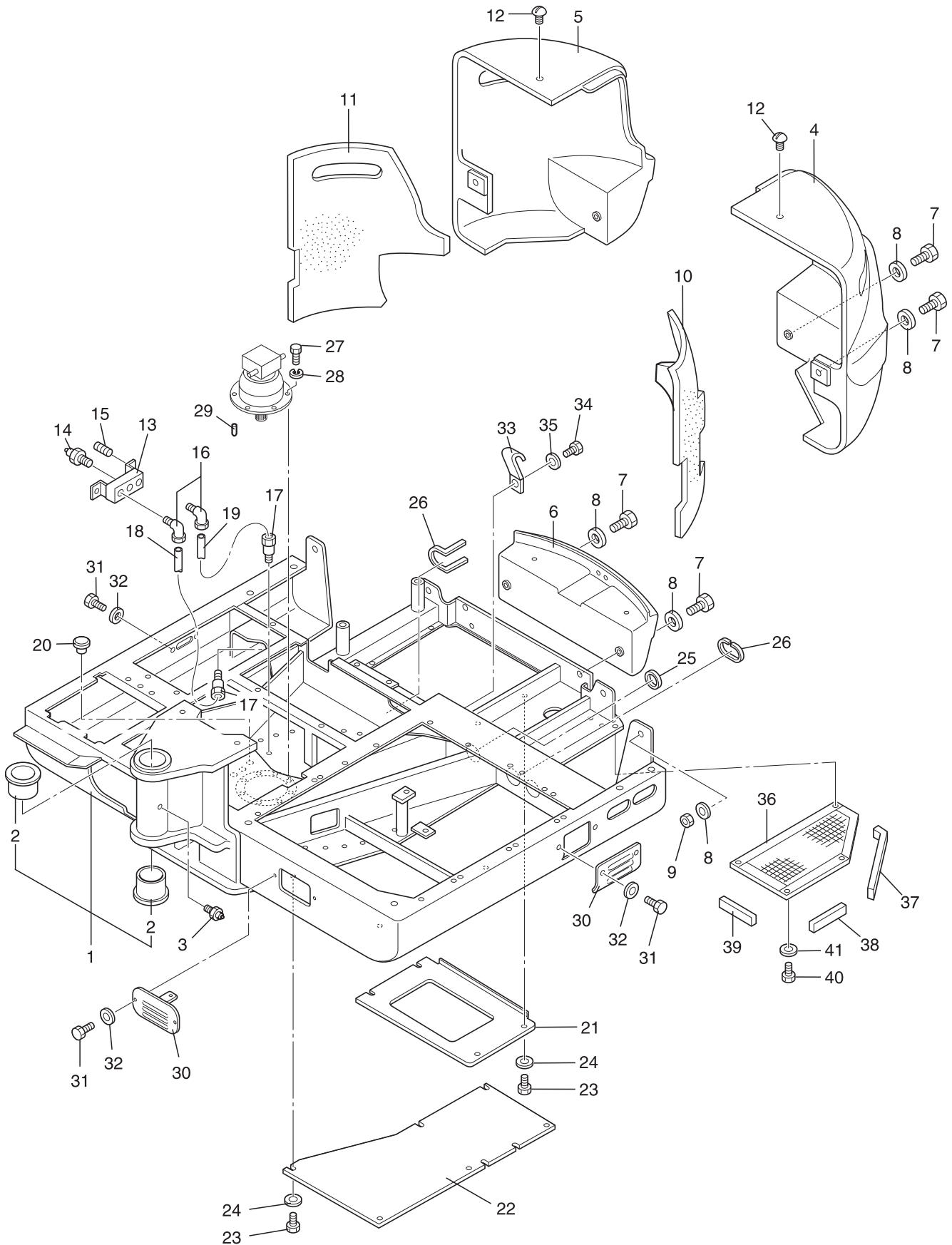
---



## UPPER FRAME

# SWING FRAME

B10





## SWING FRAME

B10

SER. No:H7530050 ~ 9999

Key No.	Part No.	Interchangeability	Part Name	Q.ty	Applicable Ser. No.	Remarks
1	S012-00084		FRAME	1		INC. 2
2	NSS2-10108		BUSH	2		
3	0540-02000-F		NIPPLE, GREASE	1		
4	NSS2-00001-1		WEIGHT, COUNTER(L)	1		
5	NSS2-00002-1		WEIGHT, COUNTER(R)	1		
6	NSS2-00100-1		WEIGHT, COUNTER	1		
7	0103-20090-a		BOLT	8		
8	NSS2-00003-1		WASHER	12		
9	0251-20000-a		NUT	4		
10	NSS2-00005		URETHAN FOAM(L)	1		
11	NSS2-00006		URETHAN FOAM(R)	1		
12	0016-01016-P		BOLT, HOLE COVER	2		
13	NOS2-00300		MANIFOLD	1		
14	0540-02000-F		NIPPLE, GREASE	2		
15	0545-02000-h		PLUG, SUNK	4		
16	0731-02004-0		CONNECTOR 90° NYLON TUBE	2		
17	0730-02004-0		CONNECTOR, NYLON TUBE	2		
18	0754-04065-0		TUBE, NYLON	1		650L
19	0754-04081-0		TUBE, NYLON	1		810L
20	146-0319		PLUG, HOLE	1		
21	S012-00337		COVER	1		
22	NSS2-15040		COVER	1		
23	0103-10020-a		BOLT	10		
24	0389-10000-a		WASHER, H	10		
25	0800-60005-0		GROMMET	1		
26	0807-00440-0		RUBBER, TRIM	2		



MEMO

---

FLOOR PLATE

B15

