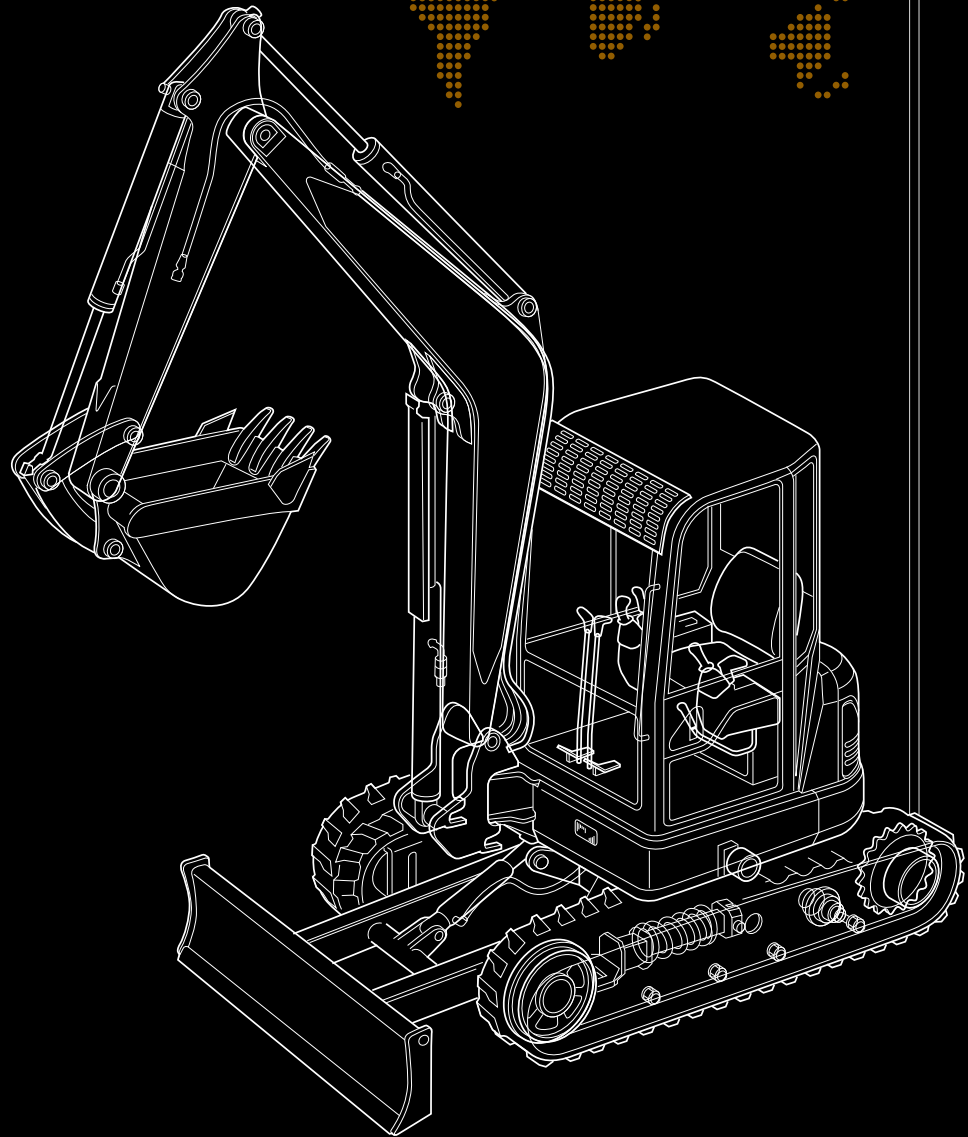


H55DR

HANIX
Japanese Craftsmanship



H55DR

Service Manual

INTRODUCTION

To insure a long life for the machine and the engine and to prevent failure and problems, proper operation, maintenance and repairs are imperative.

This service manual includes an “outline,” “structure and operation,” “inspection and adjustment,” “disassembly and assembly,” “standard maintenance,” and “repair and replacement of parts” of the machine which are necessary to carry out the inspections and repairs in the repair shop.

We trust that this manual will help you to effectively carry out the necessary. Repairs should they arise, also provide a accurate description of the product, and the correct repair procedures.

CONTENTS

1. Precautions on Maintenance
2. Outline
3. Attachment
4. Engine
5. Main Pump
6. Hydraulic Oil Filter
7. Control Valve
8. Joystick
(Pilot Valve)
9. Pilot Valve (1)
(Travel)
10. Pilot valve (2)
(Dozer)
11. Solenoid Valve
(Swing • P.T.O.)
12. Slew Motor
13. Travel Motor
14. Hydraulic Cylinder
15. Swivel Joint
16. Crawler
17. Spring Case and Grease Cylinder
18. Idler
19. Sprocket
20. Track Roller
21. Carrier Roller
22. Electrical Equipment
23. Cooler

1 PRECAUTIONS ON MAINTENANCE

1. Correct operation

Correct operation means to follow the correct “procedure” and “method.”

Procedure focuses on speed and accuracy of each job.

In the method, are addressed what type of facility, tools, instruments, materials, oil should be used, how and which part should be checked, adjusted or disassembled, and what matters to attend to.

2. Precautions on operation

1. Safety check

Check that stoppers and sleepers are correctly installed for the vehicle jack-up operation.

2. Preparation

Prepare all of the tools and inspect and adjust the instruments.

3. For efficiency

1) Understand the state before disassembly.

What is the problem? Is disassembly absolutely necessary?

2) Before disassembly

Determine whether match marks are necessary. For the electrical system, disconnect the cable from the battery terminal.

3) Precautions for disassembly

In stead of checking all of the disassembled parts at once, check each part individually as it is disassembled. When removing the hydraulic unit or the hoses, mount a dust cap on the connection.

4) Repair of disassembled parts

Keep the disassembled parts in order. Clearly distinguish the parts to be replaced with new parts from those to be reused. Packings, seals, rings, split pins must be replaced.

NOTE:

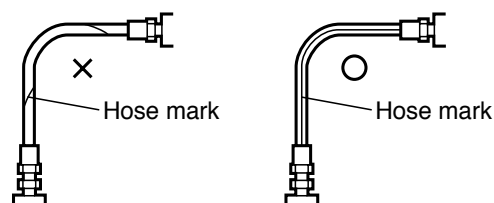
Electrical equipment, rubbers and V belts (which are easily affected by water and oil) must be handled carefully in order to prevent soiling them.

5) Clean disassembled parts

Thoroughly clean the disassembled parts.

6) Assembly

Perform the assembly correctly (tightening torque, application of Three Bond, screw lock, grease, use of seal tape, etc.). Also install the hose correctly.

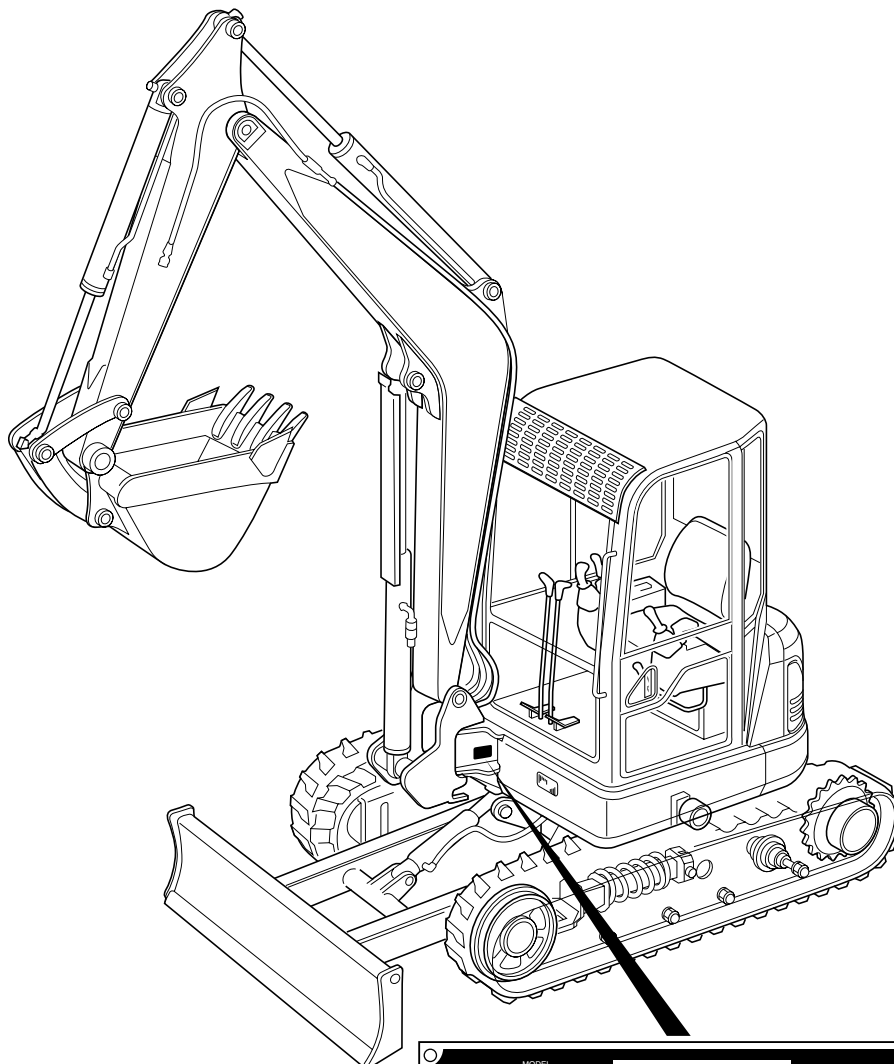


2 OUTLINE

CONTENTS

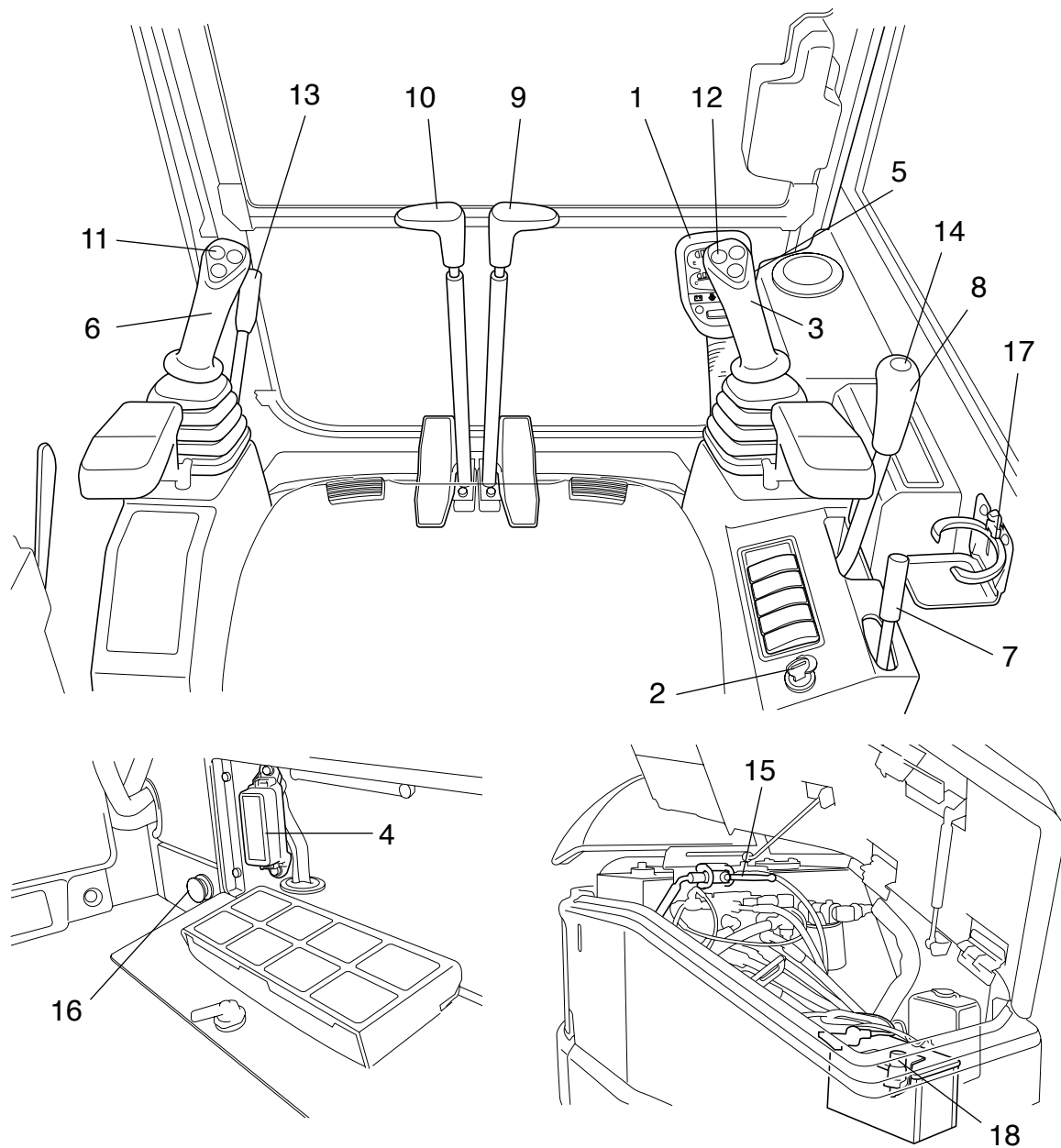
- 2-1 Location of serial No.
- 2-2 Name of each part
- 2-3 Dimensions and specification
- 2-4 Weight list
- 2-5 Oil and grease supply points
- 2-6 List of supply oil and grease
- 2-7 When to repair
- 2-8 Hydraulic circuit diagram

2-1 Location of Serial Number

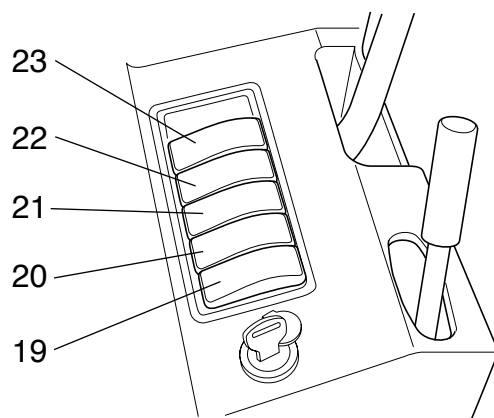


MACHINE MACHINE MACCHINA MAKUIIME MASKIN	MODEL MODELL/MODELLE MODELLO/MODELOS		←	Model Name.
	NO.		←	Serial No.
	WEIGHT/GEWICHT GEWICHT/POIDS PESOPESON/VEKT		kg	
	YEAR/YEAR BAUJAHR/ANNÉE ANNO/ANO/AN			
ENGINE MOTOR MOTEUR MOTORE MODOR	MODEL MODELL/MODELLE MODELLO/MODELOS		MAX. DRAWBAR FULL	kN
	NO.		MAX. VERT. LOAD	kN
	POWER/VERMOGEN LEISTUNG/PUISSANCE POTENSIA/POTENȚEA VTELESE		kW/ min ⁻¹	
HANIX EUROPE LTD. Unit B Windmill Lane, Denton, Manchester M34 3SP, United Kingdom MADE IN JAPAN				

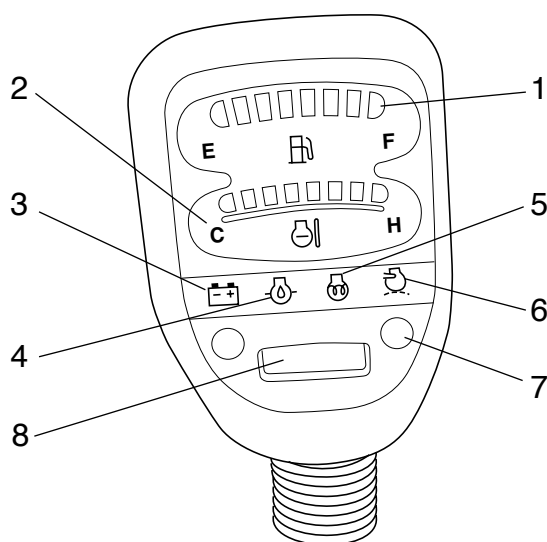
2-2 Name of each part



- | | |
|--------------------------------|-----------------------------|
| 1. Meter panel | 2. Starter switch |
| 3. Horn switch | 4. Fuse box |
| 5. Right operation lever | 6. Left operation lever |
| 7. Accelerator lever | 8. Dozer lever |
| 9. Right travelling lever | 10. Left travelling lever |
| 11. Swing operation switch | 12. P.T.O. operation switch |
| 13. Safety lock lever | 14. Over drive switch |
| 15. Manual boom lowering lever | 16. Power supply |
| 17. Cup holder | 18. Isolation switch |



- 19. Working lamp switch
- 20. Heater switch
- 21. Fan switch
- 22. Wiper and washer switch
- 23. Automatic decelerator switch (Optional equipment)



- 1. Fuel gauge lamp
- 2. Water temperature gauge lamp
- 3. Charge lamp
- 4. Engine oil pressure lamp
- 5. Glow lamp
- 6. Air filter lamp
- 7. Over drive lamp
- 8. Hour meter