

PARTS CATALOG

H36 B

SER NO. H3600051 ~

HANIX EUROPE LTD.

PART NO.41601-00127-1

Full download: <http://manualplace.com/download/hanix-h36b-parts-sec-wat/>

Hanix H36b Parts Sec Wat

How to Use Parts Catalogue

1. This parts catalogue covers all components for excavator model H36B when ordering parts refer to the under mentioned items.
2. To read the parts catalogue:
 - a) Parts marked with * are composed of assembly parts, ☆ shows component parts.
 - b) Originally the parts are shown in essential numbers for unit machine in the column, however, the component parts are meant for unit.
 - c) Parts marked with ○ in the parts No. column are not supplied by single piece but are supplied in components are assembly.
 - d) Marks appearing in the column of interchangeability are as follows:
 - A..... New parts can take place of old parts, but no vice-versa.
 - B..... No interchangeability between new and old parts.
 - C..... Discontinued.
 - D..... Newly added parts.
 - E..... Both new and old parts applicable.
 - Q..... Quantity altered.
 - e) In the column of applicable machines are shown the machine serial numbers for which the parts in the same column are used.

The year and month appearing there instead of machine serial number means the time of alteration.
 - f) Standards and dimensions of parts are shown in the remarks column.
Note "Inc. ~" in case of supply in assembly.
 - g) In case of _____ line is drawn on the part number, replace that part with the part below.
 - h) The abbreviations have meaning as follows:

ASSY..... ASSEMBLY
 ASS'Y..... ASSEMBLY
 HYD..... HYDRAULIC
 H..... HEAD

CYL..... CYLINDER
 COUN..... COUNTER
 VALA..... VALANCE
 J..... JOINT

INDEX

WORK EQUIPMENT

A11	:	WORK EQUIPMENT (1)	2
A12	:	WORK EQUIPMENT (2)	4

UPPER FRAME

B10	:	SWING FRAME	8
B15	:	FLOOR PLATE	12
B21	:	CONTROL SYSTEM (1)	16
B22	:	CONTROL SYSTEM (2)	18
B23	:	CONTROL SYSTEM (3)	22
B24	:	CONTROL SYSTEM (4)	26
B25	:	CONTROL SYSTEM (5)	30
B30	:	TANK UNIT	34
B40	:	ENGINE COVER	38
B61A	:	CABIN (1)	42
B62A	:	CABIN (2)	46
B63A	:	CABIN (3)	50
B61B	:	CABIN (1)	54
B62B	:	CABIN (2)	58

LOWER MACHINE

C11	:	TRACK FRAME (1)	64
C12	:	TRACK FRAME (2)	68

POWER UNIT

D21	:	POWER UNIT (1)	74
D22	:	POWER UNIT (2)	78

D23	:	POWER UNIT (3)	82
D24	:	POWER UNIT (4)	84

HYDRAULIC PIPING

E10	:	WORK EQUIPMENT PIPING	88
E21	:	UPPER FRAME PIPING(1)	92
E22	:	UPPER FRAME PIPING(2)	94
E23	:	UPPER FRAME PIPING(3)	96
E24	:	UPPER FRAME PIPING(4)	100
E25	:	UPPER FRAME PIPING(5)	104
E30	:	CHASSIS FRAME PIPING	106

HYDRAULIC COMPONENTS

F11	:	CONTROL VALVE(1)	110
F12	:	CONTROL VALVE(2)	114
F20	:	BOOM CYLINDER.....	118
F22	:	ARM CYLINDER.....	122
F24	:	BUCKET CYLINDER	126
F26	:	SWING CYLINDER.....	128
F28	:	DOZER CYLINDER	130
F40	:	SWIVEL JOINT	132
F45	:	PUMP	134
F50	:	DRIVE MOTOR.....	136
F55	:	SLEW MOTOR	138
F61	:	HYDRAULIC COMPONENT	140

ELECTRIC SYSTEM

G10	:	ELECTRIC SYSTEM(1).....	144
-----	---	-------------------------	-----

G12 : ELECTRIC SYSTEM(2)..... 148

LABEL

H10 : LABEL 152

OPTION

J11 : OPTION BUCKET 160

J12 : LONG ARM 162

J21 : PTO PIPING 164

J : PEDAL STOPPER 166

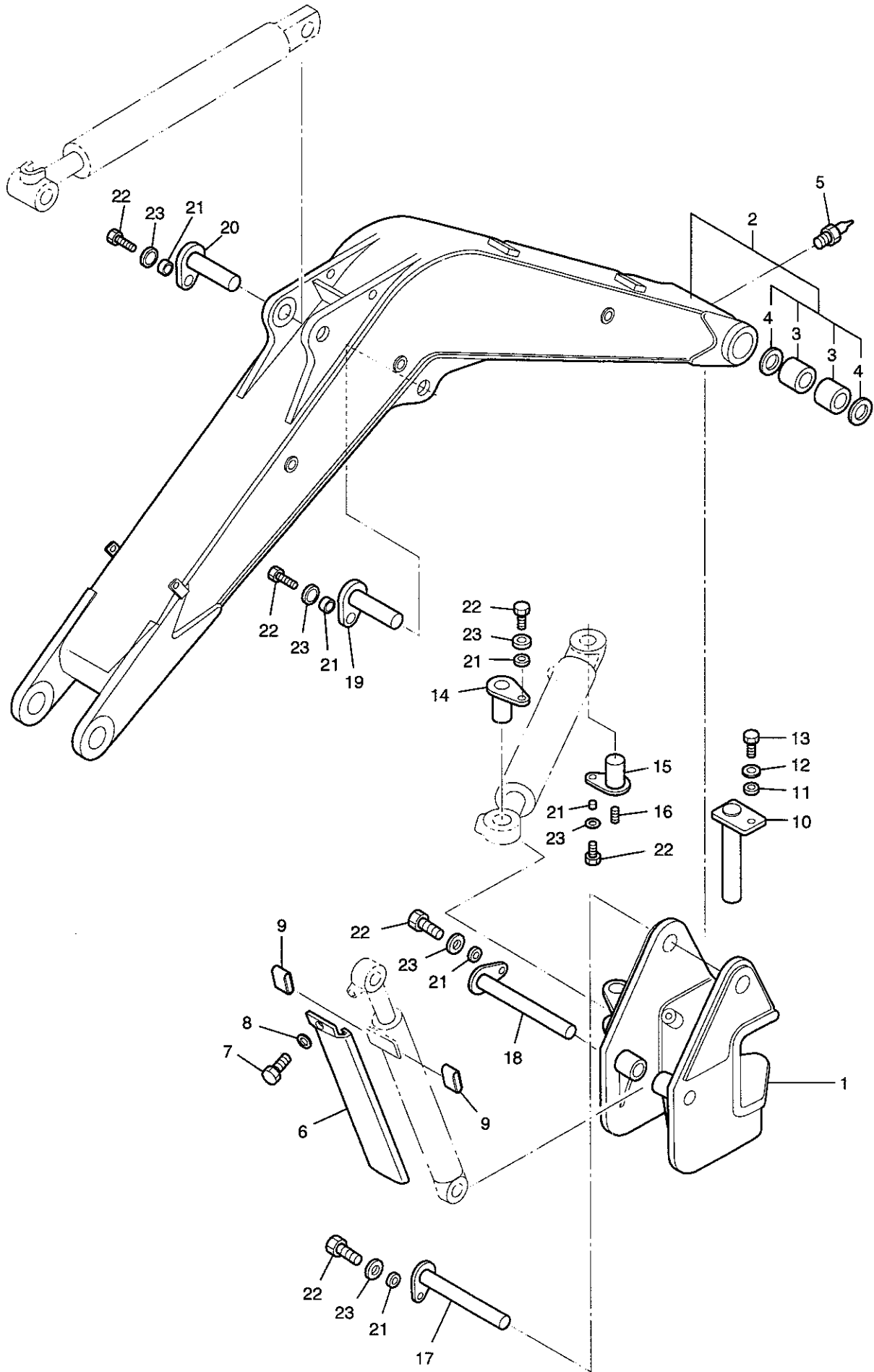
ACCESSORY PARTS

K10 : TOOLS 170

WORK EQUIPMENT

WORK EQUIPMENT(1)

A11



MODEL:H36B

WORK EQUIPMENT(1)

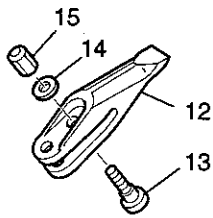
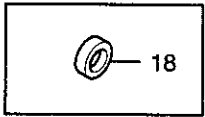
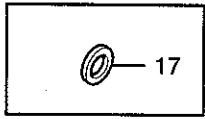
A11

SER No:H3600051 ~ 99999

Key No.	Part No.	Interchange-ability	Part Name	Qty	Applicable Ser. No.	Remarks
1	00350-00150		SWING POST ASS'Y	1		
☆ 2	00310-00270		BOOM ASS'Y	1		INC. 3, 4
※ 3	00102-01070		BUSH	2		
※ 4	811-90050		SEAL, DUST	2		
5	30570-10201		NIPPLE, GREASE	1		
6	00310-00290		COVER, BOOM CYL	1		
7	30781-12020		BOLT	1		
8	30746-16012		WASHER	1		
9	02002-00750		HOSE, VINYL	2		
10	00101-03090		SWING POST PIN ASS'Y	1		
11	00103-00920		COLLAR	1		
12	00104-01210		WASHER	1		
13	30701-16040		BOLT	1		
14	00101-03100		PIN	1		
15	00101-02990		PIN	1		
16	30552-00100		PLUG	1		
17	00101-03110		PIN	1		
18	00101-03120		PIN	1		
19	00101-03020		PIN	1		
20	00101-03130		PIN	1		
21	00103-01080		COLLAR	6		
22	30781-12025		BOLT	6		
23	30746-16012		WASHER	6		

WORK EQUIPMENT(2)

A12



DETAIL A

