

How to use this manual

Be sure to read this manual before driving this vehicle. This section tells you about the marks used in this manual.

Mark description

⚠ A precaution to protect yourself from an accident.

🛡 A measure to protect this vehicle from damage or a more effective method of operation.

⚙ Represents the tightening torque of a location that needs particular attention during assembly.

🛢 Represents the amount of grease or oil to be supplied.

If you have any questions or suggestions, do not hesitate to contact the nearest dealer.

Descriptions and illustrations in this manual are subject to change for changes in specification.



INTRODUCTION

Thank you for the clever choice of our product

This manual tells you how to use this vehicle correctly, as well as how to check, service maintain and adjust it.

This is a leading-edge vehicle, born out of our rich experience and state-of-the-art technology and has passed a series of strict inspections and tests before leaving the factory. It is therefore reliable.

Before using this vehicle, be sure to read this manual carefully and always use it in its best condition.

If you have any questions or suggestions about this vehicle, please consult your dealer or the nearest service plant.

We look forward to your continued patronage.

Descriptions and illustrations are subject to change for revised specification of this vehicle.

Regarding engine, or engine parts, please refer to attached Mitsubishi Engine Operator Manual (supplied).



H15B



CONTENTS

Introduction

How to use this manual.....	1
Reporting a failure and ordering a part.....	5

Operation

Safety precautions	10
Part names.....	15
Operation	22
Operational precautions.....	26
Handing this vehicle in a cold area or in winter.....	27
Prolonged storage.....	28

Inspection and maintaining this machine

Inspection.....	30
Periodical inspections and maintenance list	34
How to service and maintain this vehicle	44
Lubricants	48

Others

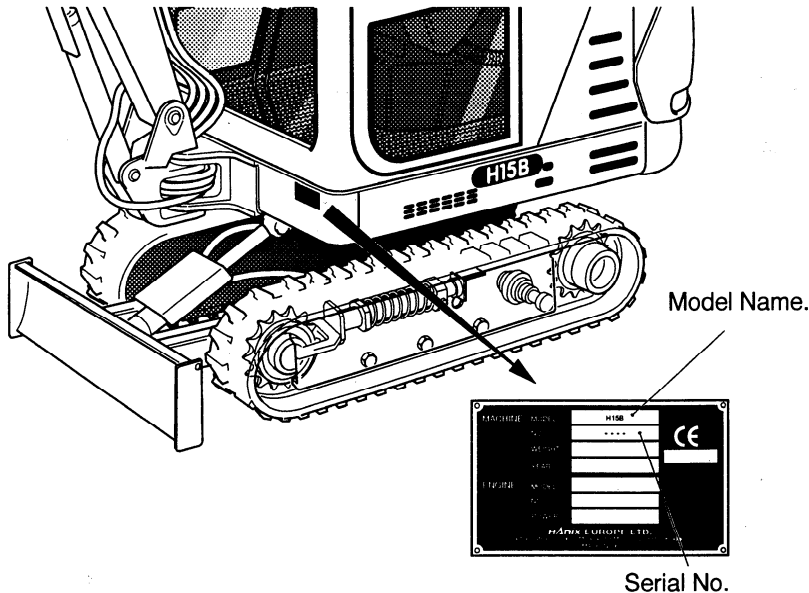
Dimensions and specifications.....	54
Electric circuit.....	56
Hydraulic circuit.....	59
Consumables list.....	60

H15B

Reporting a failure and ordering a part

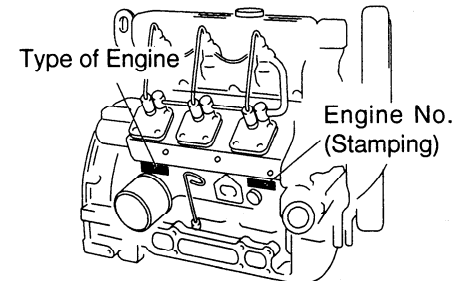
Ordering a part

Inform the dealer the parts name and serial no. (SER. NO.) when ordering parts.



Reporting a failure

If the vehicle or engine fails, check the model, serial number and check the hour meter to note the cumulative operating hours. Then contact your dealer or the nearest of our service plants. A description of the failure status in as much detail as possible and order a repair.



Use the hour meter as follows:

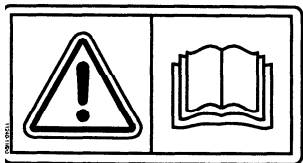
- Record in your logbook the readings you got before or after your everyday operation and use such data as an operation record of your vehicle.
- The hour meter also tells you when to replace the filter and oil.

H15B

Safety Decals - Explanations

Caution:

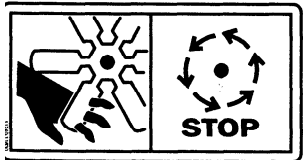
Read the Operation and Service Manual *before* operating the machine to avoid risk of injury.



Part No 11240-11620

Danger:

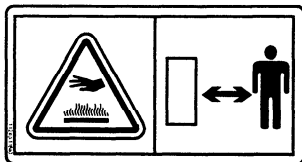
Make sure the engine is stopped before working on any part of the engine compartment to avoid risk of injury.



Part No 11240-11630

Caution: Hot surfaces

Keep hands and arms away from hot surfaces.



Part No 11240-11640

Danger: Stay clear of the rear of the machine

Keep a safe distance from turning radius of the machine to avoid risk of injury.



Part No 11240-11650

Danger: Stay clear of the working equipment

Keep a safe distance from turning radius of the boom, arm, bucket and any other fitted equipment to avoid risk of injury.



Part No 11240-11660