

HANIX
Mini Excavators



H15B Plus 2

Parts Catalogue

Japanese Craftsmanship

How to Use Parts Catalogue

1. This parts catalogue covers all components for excavator model H15B-2 when ordering parts refer to the under mentioned items.
2. To read the parts catalogue:
 - a) Parts marked with * are composed of assembly parts, ☆ shows component parts.
 - b) Originally the parts are shown in essential numbers for unit machine in the column, however, the component parts are meant for unit.
 - c) Parts marked with ○ in the parts No. column are not supplied by single piece but are supplied in components are assembly.
 - d) Marks appearing in the column of interchangeability are as follows:
 - A..... New parts can take place of old parts, but no vice-versa.
 - B..... No interchangeability between new and old parts.
 - C..... Discontinued.
 - D..... Newly added parts.
 - E..... Both new and old parts applicable.
 - Q..... Quantity altered.
 - e) In the column of applicable machines are shown the machine serial numbers for which the parts in the same column are used.

The year and month appearing there instead of machine serial number means the time of alteration.
 - f) Standards and dimensions of parts are shown in the remarks column.
Note "Inc. ~" in case of supply in assembly.
 - g) In case of ——— line is drawn on the part number, replace that part with the part below.
 - h) The abbreviations have meaning as follows:

| | |
|---------------------|-------------------|
| ASSY..... ASSEMBLY | CYL..... CYLINDER |
| ASS'Y..... ASSEMBLY | COUN..... COUNTER |
| HYD..... HYDRAULIC | VALA..... VALANCE |
| H..... HEAD | J..... JOINT |

WORK EQUIPMENT

| | | | |
|-----|---|--------------------|--------|
| A11 | : | WORK EQUIPMENT (1) |2 |
| A12 | : | WORK EQUIPMENT (2) |6 |

UPPER FRAME

| | | | |
|------|---|--------------------|---------|
| B10 | : | SWING FRAME |10 |
| B15 | : | FLOOR PLATE |14 |
| B21A | : | CONTROL SYSTEM (1) |18 |
| B21B | : | CONTROL SYSTEM (1) |20 |
| B22A | : | CONTROL SYSTEM (2) |22 |
| B22B | : | CONTROL SYSTEM (2) |26 |
| B23A | : | CONTROL SYSTEM (3) |30 |
| B23B | : | CONTROL SYSTEM (3) |34 |
| B30 | : | TANK UNIT |38 |
| B40 | : | ENGINE COVER |42 |
| B50 | : | CANOPY |46 |
| B52 | : | TOOL BOX |48 |
| B61 | : | CABIN |50 |
| B62 | : | DOOR(FRONT, SIDE) |54 |
| B63 | : | CABIN PIPING |58 |

LOWER MACHINE

| | | | |
|------|---|-----------------|---------|
| C11A | : | TRACK FRAME (1) |62 |
| C11B | : | TRACK FRAME (1) |66 |
| C12 | : | TRACK FRAME (2) |70 |

POWER UNIT

| | | | |
|-----|---|----------------|---------|
| D21 | : | POWER UNIT (1) |74 |
| D22 | : | POWER UNIT (2) |78 |
| D23 | : | POWER UNIT (3) |82 |

HYDRAULIC PIPING

| | | | |
|-----|---|-----------------------|---------|
| E10 | : | WORK EQUIPMENT PIPING |86 |
| E21 | : | UPPER FRAME PIPING(1) |90 |
| E22 | : | UPPER FRAME PIPING(2) |92 |
| E23 | : | UPPER FRAME PIPING(3) |94 |

| | | | |
|-----|---|-----------------------|----------|
| E24 | : | UPPER FRAME PIPING(4) |96 |
| E30 | : | CHASSIS FRAME PIPING |100 |

HYDRAULIC COMPONENT

| | | | |
|-----|---|------------------|----------|
| F11 | : | CONTROL VALVE(1) |104 |
| F12 | : | CONTROL VALVE(2) |106 |
| F20 | : | BOOM CYLINDER |108 |
| F22 | : | ARM CYLINDER |112 |
| F24 | : | BUCKET CYLINDER |114 |
| F26 | : | DOZER CYLINDER |116 |
| F28 | : | SWING CYLINDER |118 |
| F29 | : | EXTEND CYLINDER |120 |
| F40 | : | SWIVEL JOINT |122 |
| F45 | : | PUMP |124 |
| F50 | : | DRIVE MOTOR |126 |
| F55 | : | TURNING MOTOR |130 |
| F61 | : | VALVE JOYSTICK |132 |
| F70 | : | VALVE SOLENOID |134 |
| F75 | : | VALVE SELECTOR |136 |
| F80 | : | SOLENOID VALVE |138 |

ELECTRIC SYSTEM

| | | | |
|-----|---|-----------------|----------|
| G10 | : | ELECTRIC SYSTEM |142 |
|-----|---|-----------------|----------|

LABEL

| | | | |
|-----|---|-------|----------|
| H10 | : | LABEL |148 |
|-----|---|-------|----------|

OPTION

| | | | |
|-----|---|----------------|----------|
| J21 | : | PTO PIPING |152 |
| J23 | : | TEST COUPLING |154 |
| J40 | : | CUT OFF SWITCH |156 |
| J41 | : | CANOPY |158 |

ACCESSORY PARTS

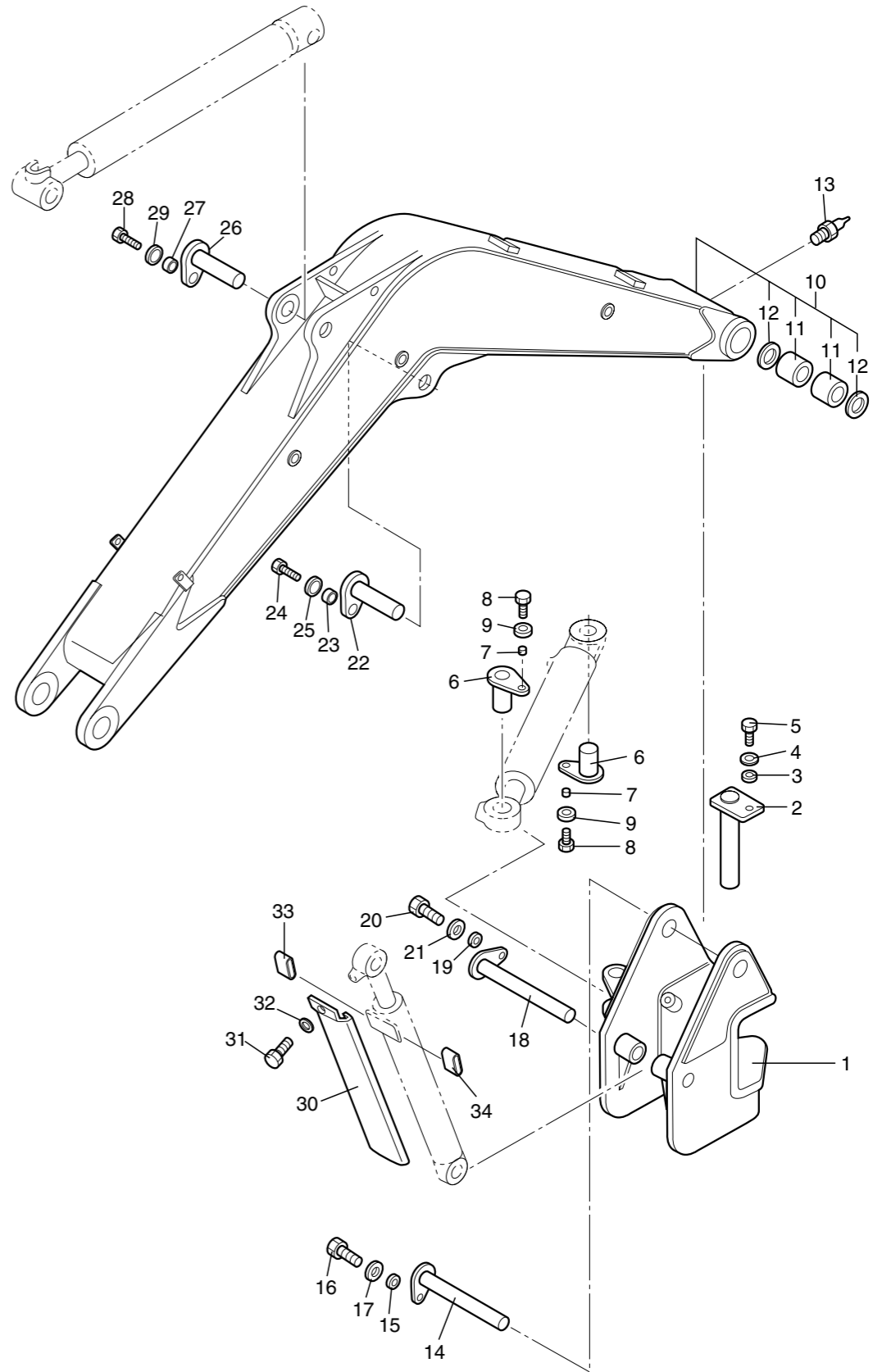
| | | | |
|-----|---|-------|----------|
| K10 | : | TOOLS |162 |
|-----|---|-------|----------|



WORK EQUIPMENT(1)

A11

WORK EQUIPMENT



WORK EQUIPMENT(1)

A11

SER. No:H1560051 ~ 99999

| Key No. | Part No. | Interchange-ability | Part Name | Q.ty | Applicable Ser. No. | Remarks |
|---------|--------------|---------------------|-------------------------|------|---------------------|------------|
| 1 | NHS3-11000-A | | SWING POST | 1 | | |
| 2 | NOS3-60100 | | PIN, SWING POST | 1 | | |
| 3 | HCA3-60001 | | COLLAR, POST PIN | 1 | | |
| 4 | HCA3-60004 | | WASHER | 1 | | Ø40×Ø17 |
| 5 | 0103-16035-a | | BOLT | 1 | | M16×35 |
| 6 | NOS1-60200 | | PIN, DOZER CYLINDER | 2 | | |
| 7 | NBC3-00001-1 | | COLLER | 2 | | Ø20 |
| 8 | 0211-12025-a | | BOLT | 2 | | M12×25 |
| 9 | 0389-12000-a | | WASHER | 2 | | M12 |
| ◇10 | NHS3-21000-0 | | BOOM | 1 | | INC 11, 12 |
| *11 | NOS3-21018 | | BUSH | 2 | | Ø45 |
| *12 | 0493-35045-h | | DUST, SEAL | 2 | | Ø35-Ø45 |
| 13 | 0540-02000-f | | NIPPLE, GREASE | 1 | | Rc1/8-A |
| 14 | NOS3-60300 | | PIN, BOOM | 1 | | |
| 15 | MBC3-00001-1 | | COLLER | 1 | | Ø20 |
| 16 | 0211-12025-a | | BOLT | 1 | | M12×25 |
| 17 | 0389-12000-a | | WASHER | 1 | | M12 |
| 18 | NOS3-60400 | | PIN, BOOM CYLINDER HEAD | 1 | | |
| 19 | MBC3-00001-1 | | COLLER | 1 | | Ø20 |
| 20 | 0211-12025-a | | BOLT | 1 | | M12×25 |
| 21 | 0389-12000-a | | WASHER | 1 | | M12 |
| 22 | NHS3-60001-0 | | PIN, CYLINDER | 1 | | |
| 23 | MBC3-00001-1 | | COLLER | 1 | | Ø20 |
| 24 | 0211-12025-a | | BOLT | 1 | | M12×25 |
| 25 | 0389-12000-a | | WASHER | 1 | | M12 |
| 26 | NHS3-60001-0 | | PIN, CYLINDER | 1 | | |

WORK EQUIPMENT(1)

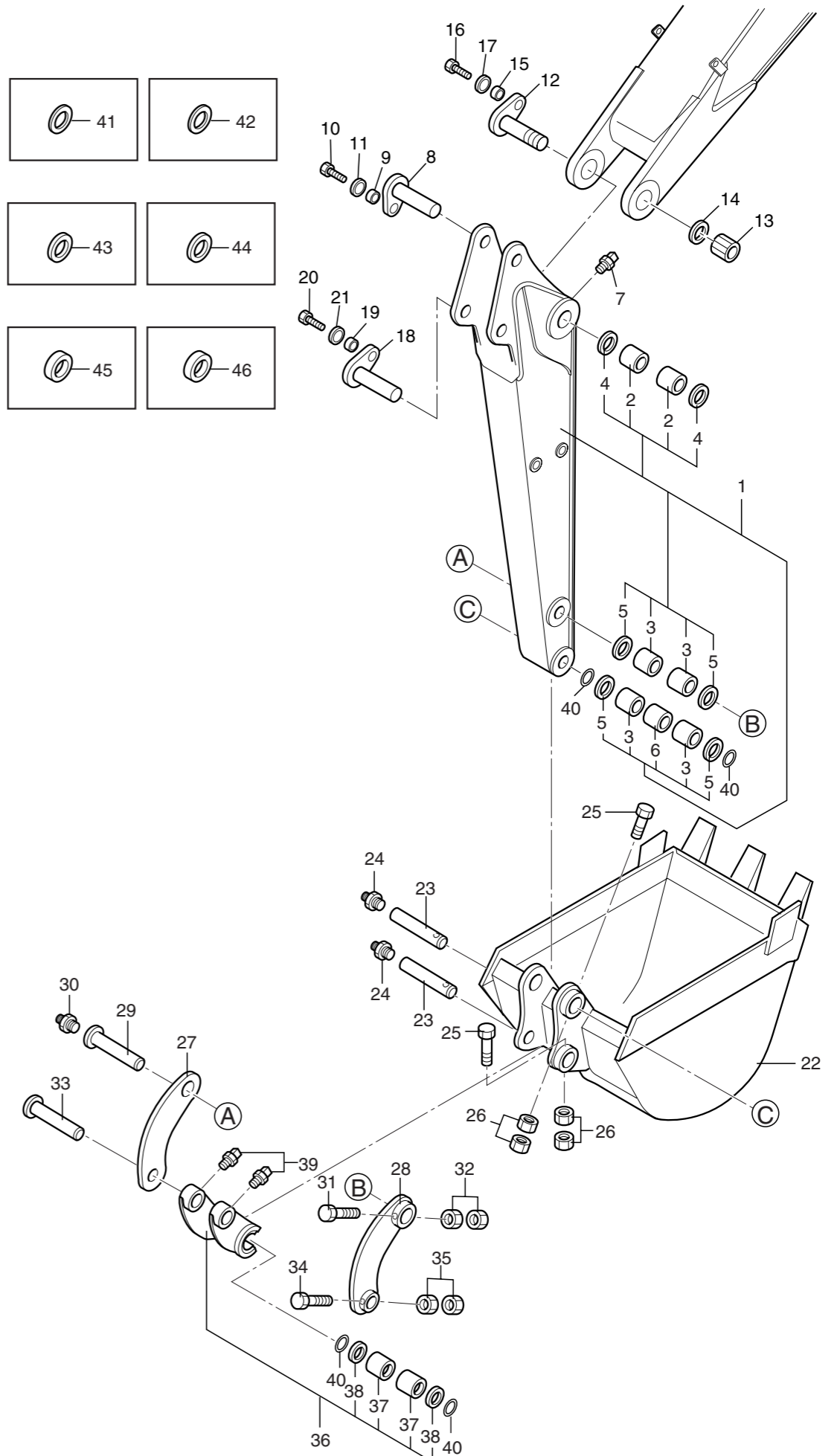
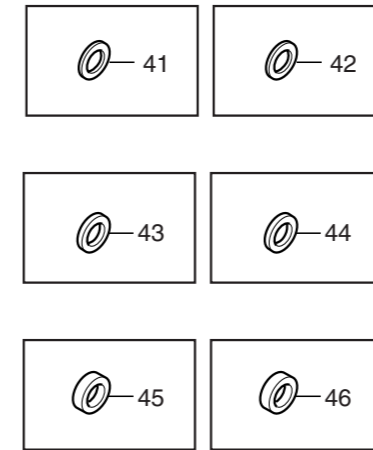
A11

SER. No:H1560051 ~ 99999

| Key No. | Part No. | Interchange-ability | Part Name | Q.ty | Applicable Ser. No. | Remarks |
|---------|--------------|---------------------|----------------------|------|---------------------|-------------|
| 27 | MBC3-00001-1 | | COLLER | 1 | | Ø20 |
| 28 | 0211-12025-a | | BOLT | 1 | | M12×25 |
| 29 | 0389-12000-a | | WASHER | 1 | | M12 |
| 30 | NOS3-00001-1 | | COVER, BOOM CYLINDER | 1 | | |
| 31 | 0211-12020-a | | BOLT | 1 | | M12×20 |
| 32 | 0389-12000-a | | WASHER | 1 | | M12 |
| 33 | NRS3-00004 | | TUBE, VINYL | 2 | | Ø38×Ø44-35L |
| | | | | | | |
| | | | | | | |
| | | | | | | |
| | | | | | | |
| | | | | | | |
| | | | | | | |
| | | | | | | |
| | | | | | | |
| | | | | | | |
| | | | | | | |
| | | | | | | |
| | | | | | | |
| | | | | | | |
| | | | | | | |
| | | | | | | |
| | | | | | | |
| | | | | | | |
| | | | | | | |
| | | | | | | |
| | | | | | | |
| | | | | | | |
| | | | | | | |

A12

WORK EQUIPMENT(2)



WORK EQUIPMENT(2)

A12

SER. No:H1560051 ~ 99999

| Key No. | Part No. | Interchange-ability | Part Name | Q.ty | Applicable Ser. No. | Remarks |
|---------|--------------|---------------------|-----------------------|------|---------------------|------------------|
| ◇1 | NHS3-32000-0 | | ARM, LONG | 1 | | +200 INC. 2~6 |
| *2 | NOS3-21018 | | BUSH | 2 | | ∅45 |
| *3 | NOS3-31010 | | BUSH | 4 | | ∅40 |
| *4 | 0493-35045-h | | DUST, SEAL | 2 | | ∅35-∅45 |
| *5 | 0493-30040-h | | DUST, SEAL | 4 | | ∅30-∅40 |
| *6 | NHS3-31007-0 | | PIPE | 1 | | ∅38.1 |
| 7 | 0540-02000-f | | NIPPLE, GREASE | 1 | | Rc1/8-A |
| 8 | NOS3-60700 | | PIN, ARM CYLINDER ROD | 1 | | |
| 9 | MBC3-00001-1 | | COLLER | 1 | | ∅20 |
| 10 | 0211-12025-a | | BOLT | 1 | | M12×25 |
| 11 | 0389-12000-a | | WASHER | 1 | | M12 |
| 12 | NOS3-60600-1 | | PIN, BOOM ARM | 1 | | |
| 13 | 0294-30000-a | | NUT | 1 | | M30U |
| 14 | 0389-30000-a | | WASHER | 1 | | M30 |
| 15 | MBC3-00001-1 | | COLLER | 1 | | ∅20 |
| 16 | 0211-12025-a | | BOLT | 1 | | M12×25 |
| 17 | 0389-12000-a | | WASHER | 1 | | M12 |
| 18 | NOS3-60700 | | PIN, ARM CYLINDER ROD | 1 | | |
| 19 | MBC3-00001-1 | | COLLER | 1 | | ∅20 |
| 20 | 0211-12025-a | | BOLT | 1 | | M12×25 |
| 21 | 0389-12000-a | | WAHSER | 1 | | M12 |
| 22 | NHS3-51000-A | | BUCKET | 1 | | |
| 23 | NOS3-60003 | | PIN, BUCKET | 2 | | |
| 24 | 0540-02000-f | | NIPPLE, GREASE | 2 | | Rc1/8-A |
| 25 | 0102-08060-a | | BOLT | 2 | | M8×60 |
| 26 | 0251-08000-a | | NUT | 4 | | M8 |

WORK EQUIPMENT(2)

A12

SER. No:H1560051 ~ 99999

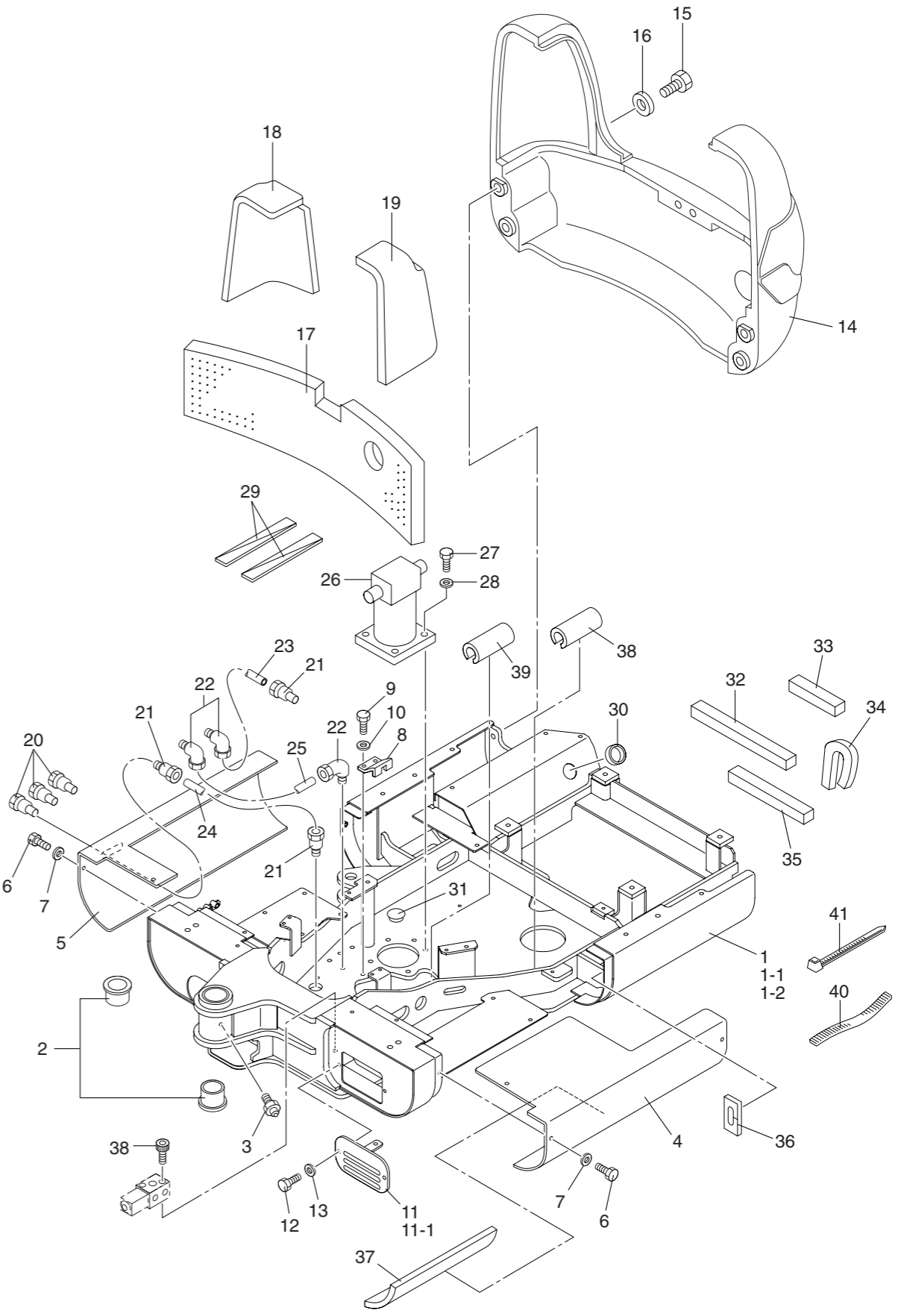
| Key No. | Part No. | Interchange-ability | Part Name | Q.ty | Applicable Ser. No. | Remarks |
|---------|--------------|---------------------|----------------------|------|---------------------|------------|
| 27 | NOS3-40001 | | LINK, BUCKET (R) | 1 | | |
| 28 | NOS3-40200 | | LINK, BUCKET (L) | 1 | | |
| 29 | NOS3-60002 | | PIN, BUCKET LINK | 1 | | |
| 30 | 0540-02000-f | | NIPPLE, GREASE | 1 | | Rc1/8-A |
| 31 | 0102-08060-a | | BOLT | 1 | | M8×60 |
| 32 | 0251-08000-a | | NUT | 2 | | M8 |
| 33 | NOS3-60001 | | PIN, BUCKET CYLINDER | 1 | | |
| 34 | 0102-08060-a | | BOLT | 1 | | M8×60 |
| 35 | 0251-08000-a | | NUT | 2 | | M8 |
| ◇36 | NOS3-40100 | | LINK, DUMP | 1 | | INC. 37-38 |
| *37 | NOS3-31010 | | BUSH | 2 | | ∅40 |
| *38 | 0493-30040-h | | SEAL, DUST | 2 | | ∅30-∅40 |
| 39 | 0542-02000-f | | NIPPLE, GREASE | 2 | | Rc1/8-C |
| 40 | 0490-00500-b | | O-RING | 4 | | 1B-P50A |
| 41 | MBU3-00020 | | SHIM (A) | AR | | ∅36×∅60 |
| 42 | MBU3-00021 | | SHIM (B) | AR | | ∅36×∅60 |
| 43 | MBU3-00026 | | SHIM (G) | AR | | ∅51×∅100 |
| 44 | MBU3-00027 | | SHIM (H) | AR | | ∅51×∅100 |
| 45 | NOS3-00005 | | SHIM | AR | | ∅31.5×∅50 |
| 46 | NOS3-00006 | | SHIM | AR | | ∅31.5×∅50 |
| | | | | | | |
| | | | | | | |
| | | | | | | |
| | | | | | | |
| | | | | | | |
| | | | | | | |



SWING FRAME

B10

UPPER FRAME



SWING FRAME

B10

SER. No:H1560051 ~ 99999

| Key No. | Part No. | Interchange-ability | Part Name | Q.ty | Applicable Ser. No. | Remarks |
|---------|--------------|---------------------|----------------------|------|-----------------------|---------|
| 1 | HHS2-11000-A | | FRAME, SWING | 1 | ~H1560075 | |
| 1-1 | HHS2-11000-B | B | FRAME, SWING | 1 | H1560076~ H1560128 | |
| 1-2 | HHS2-11000-C | B | FRAME, SWING | 1 | H1560129~ | |
| 2 | NOS2-10109 | | BUSH | 2 | | |
| 3 | 0540-02000-F | | NIPPLE, GREASE | 1 | | Rc1/8-A |
| 4 | NHS2-10001-0 | | COVER, SIDE (L) | 1 | | |
| 5 | NHS2-10002-0 | | COVER, SIDE (R) | 1 | | |
| 6 | 0102-08020-a | | BOLT | 6 | | M8×20 |
| 7 | 0389-08000-a | | WASHER | 6 | | M8 |
| 8 | NOS2-90001 | | STOPPER, SWIVEL | 1 | | |
| 9 | 0211-10025-a | | BOLT | 2 | | M10×25 |
| 10 | 0389-10000-a | | WASHER | 2 | | M10 |
| 11 | NHS2-10004 | | COVER | 1 | ~H1560675 | |
| 11-1 | NHS2-10004-A | B | COVER | 1 | H1560676~ | |
| 12 | 0102-08015-a | | BOLT | 2 | | M8×15 |
| 13 | 0389-08000-a | | WASHER | 2 | | M8 |
| 14 | NHS2-21000-0 | | WEIGHT, COUNTER | 1 | | |
| 15 | 0108-14085-a | | BOLT | 4 | | M14×85 |
| 16 | NOS2-00005 | | WASHER | 4 | | ∅16×∅35 |
| 17 | NOS2-50009 | | URETHAN FOAM | 1 | | |
| 18 | NHS2-40035 | | URETHAN FOAM | 1 | | |
| 19 | NOS2-50013 | | URETHAN FOAM | 1 | | |
| 20 | 0540-02000-F | | NIPPLE, GREASE | 3 | | Rc1/8-A |
| 21 | 0730-02004-o | | NIPPLE, CONNECTOR | 3 | | Rc1/8-A |
| 22 | 0731-02004-o | | ELBOW, CONNECTOR 90° | 3 | | Rc1/8-C |
| 23 | 0754-04050-o | | TUBE, GREASE | 1 | | 500L |

SWING FRAME

B10

SER. No:H1560051 ~ 99999

| Key No. | Part No. | Interchange-ability | Part Name | Q.ty | Applicable Ser. No. | Remarks |
|---------|--------------|---------------------|-----------------|------|---------------------|--------------------|
| 24 | 0754-04055-o | | TUBE, GREASE | 1 | | 550L |
| 25 | 0754-04065-o | | TUBE, GREASE | 1 | | 650L |
| 26 | SP25-00004 | | MOTOR, TURNING | 1 | | 2-160D0S- E3754 |
| 27 | 0211-12030-a | | BOLT | 4 | | M12×30 |
| 28 | 0389-12000-a | | WASHER | 4 | | M12 |
| 29 | NOS2-00007 | | PLATE, RUBBER | 2 | | 60×160 |
| 30 | 0800-42032-s | | GLOMMET | 1 | | |
| 31 | 0814-31000-o | | RUBBER, BUSHING | 1 | | |
| 32 | 0815-30050-0 | | URETHAN FOAM | 1 | | □30×500L |
| 33 | 0815-30019-0 | | URETHAN FOAM | 4 | | □30×190L |
| 34 | 0815-30030-0 | | URETHAN FOAM | 1 | | □30×300L |
| 35 | 0815-30044-0 | | URETHAN FOAM | 4 | | □30×440L |
| 36 | NHS2-40036-0 | | URETHAN FOAM | 1 | | |
| 37 | NHS2-10011-0 | | URETHAN FOAM | 1 | | |
| 38 | 0751-18018-o | | GUARD, HOSE | 2 | | |
| 39 | 0751-18010-o | | GUARD, HOSE | 2 | | |
| 40 | 0813-07010-o | | RUBBER TRIM | 1 | | |
| 41 | 0805-47202-B | | NYLON BAND | AR | | |