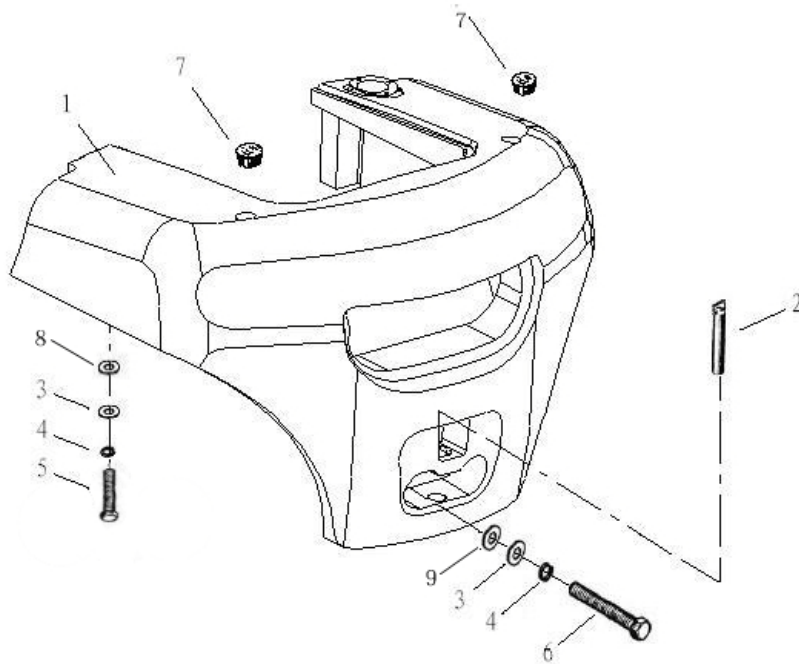


图 1 平衡重总成 Fig.1 Counter balance assembly		2008.9.25 更改				
	序号 Item No.	代号 Part No.	名称 Description	数量 Q'ty	备注或适用 车型 Remarks or Series No	物料码 Code No.
	1	GR501-021000-000	平衡重块 Counter balance	1	5T (除W28)	GR501-021000-000
		GR502-021000-000	平衡重块 Counter balance	1	5T (W28)	GR502-021000-000
		GR601-021000-000	平衡重块 Counter balance	1	6T (除W28)	GR601-021000-000
		GR602-021000-000	平衡重块 Counter balance	1	6T (W28)	GR602-021000-000
		GR701-021000-000	平衡重块 Counter balance	1	7T (除W28)	GR701-021000-000
		GR702-021000-000	平衡重块 Counter balance	1	7T (W28)	GR702-021000-000
		GR801-021000-000	平衡重块 Counter balance	1	8T	GR801-021000-000
		GR1001-021000-000	平衡重块 Counter balance	1	10T	GR1001-021000-000
	2	GR501-020100-000	拖重销 Towing pin	1		GR501-020100-000
	3	50CDA-000004	垫圈 30 Washer 30	4	5-7T	50CDA-000004
		80DH-000001	垫圈 36 Washer 36	4	8-10T	80DH-000001

图1 平衡重总成

2008.9.25 更改

Fig.1 Counter balance assembly



序号 Item No.	代号 Part No.	名称 Description	数量 Q'ty	备注或适用 车型 Remarks or Series No	物料码 Code No.
4	GB7244-87	垫圈 30 Washer 30	4	5-7T	G007244-000030-00
	GB7244-87	垫圈 36 Washer 36	4	8-10T	G007244-000036-00
5	GB5782-86	螺栓 M30 × 100 Bolt M30 × 100	2	5-7T	G005782-030100-00
	GB5782-86	螺栓 M36 × 110 Bolt M36 × 110	2	8-10T	G005782-036110-00
6	GB5782-86	螺栓 M30 × 216 Bolt M30 × 216	2	5T	G005782-030216-00
	GB5782-86	螺栓 M30 × 276 Bolt M30 × 276	2	6T	G005782-030276-00
	GB5782-86	螺栓 M30 × 330 Bolt M30 × 330	2	7T	G005782-030330-00
	GB5782-86	螺栓 M36 × 230 Bolt M36 × 230	2	8-10T	G005782-036230-00
7	N163-010002-000	塞子 Plug	2		N163-010002-000
8	GR501-021001-000	调整垫 Adjusting shim	1	5-10T	GR501-021001-000
9	N163-010008-000	调整垫片 Adjusting shim	1	5-7T	N163-010008-000
	R450-010003-000	调整垫片 Adjusting shim	1	8-10T	R450-010003-000

图 2 标示

Fig.2 Nameplate

图 2 标示
Fig.2 Nameplate

图 2 标示

Fig.2 Nameplate

图 2 标示

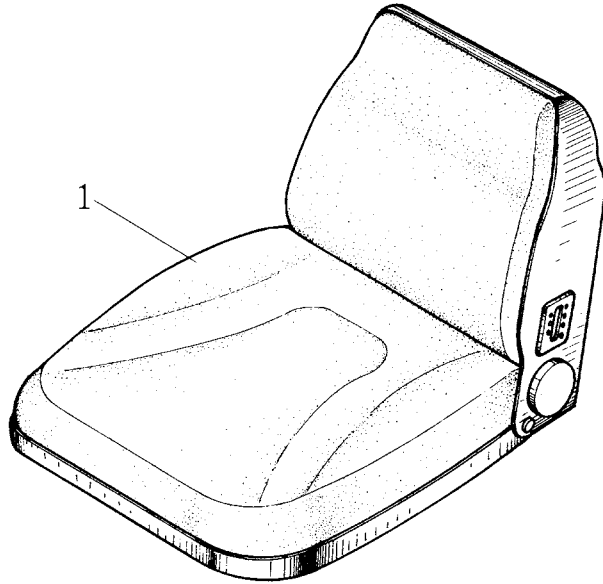
Fig.2 Nameplate

图 2 标示

Fig.2 Nameplate

图 2 标示
Fig.2 Nameplate

图3 座椅总成
Fig.3 Seat assembly

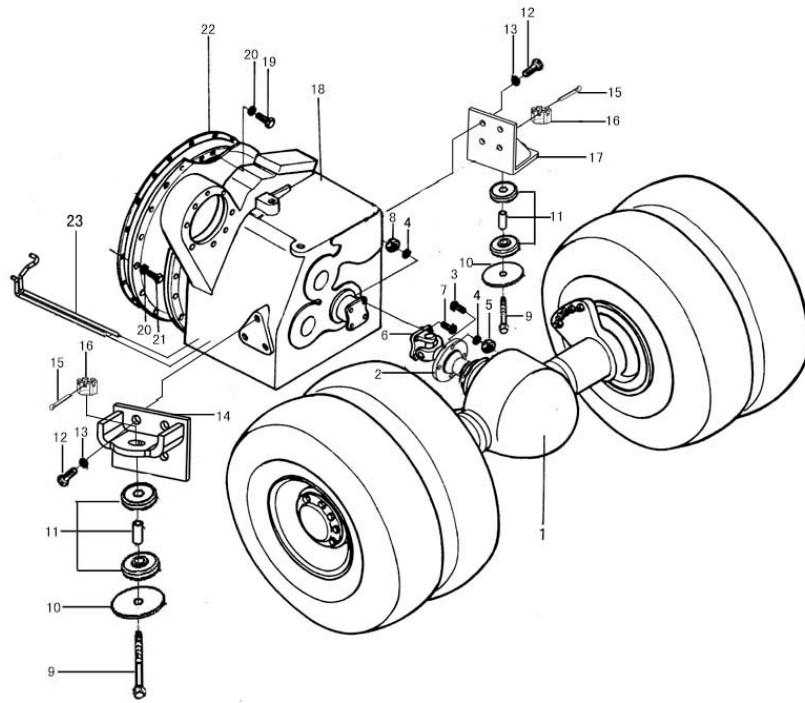


序号 Item No.	代号 Part No.	名称 Description	数量 Q'ty	备注或适用车型 Remarks or Series No	物料码 Code No.
1	GY-TCM-G00	座椅 Seat	1		11007945

图4 传动系统

Fig.4 Driving system

A CPCD50/60/70-RG16 A1 CPCD50/60/70-RG16-J C CPCD50/60/70-RW28 F CPCD50/60/70-RG24
 F1 CPCD50/60/70-RG24-J G CPCD50/60/70-RW14 M CPCD50/60/70-RW17-Y



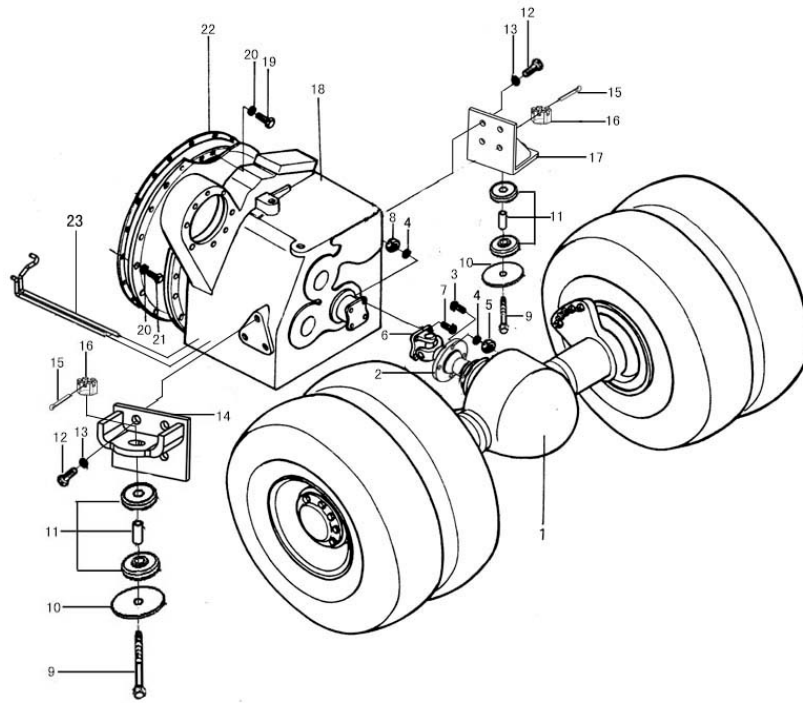
序号 Item No.	代号 Part No.	名称 Description	数量 Q'ty	备注或适用车型 Remarks or Series No	物料码 Code No.
1	GR501-120000-000	驱动桥 Drive axle	1		70042720
2	GR501-103000-000	法兰 Flange	1		70042712
3	50CDA-200001	螺栓 M14 Bolt M14	4		70002180
4	GB93-87	垫圈 14 Washer 14	8		20000036
5	GB6170-86	螺母 M14 Nut M14	4		20000633
6	GR501-104000-000	传动轴总成 Shaft assembly	1	2008.10.12	70035648
7	GB5786-86	螺栓 M14 × 1.5 × 45 Bolt M14 × 1.5 × 45	4		20003256
8	GB6171-86	螺母 M14 × 1.5 Nut M14 × 1.5	4		20003629
9	H510-100002-000	螺栓 Bolt	2		70038759
10	GR501-104000-000	垫片 Washer	2		70043997
11	CB2204-3-G00	减震垫 Washer	2		11010532
12	GB5786-86	螺栓 M16 × 1.5 × 30 Bolt M16 × 1.5 × 30	8		20003258
13	GB93-87	垫圈 16 Washer16	8		20004829
14	GR501-102000-000	双变右支架 Bracket(right)	1		70042717
15	GB91-86	销 5 × 45 Pin 5 × 45	2		20001418

图4 传动系统

Fig.4 Driving system

A CPCD50/60/70-RG16 A1 CPCD50/60/70-RG16-J C CPCD50/60/70-RW28 F CPCD50/60/70-RG24

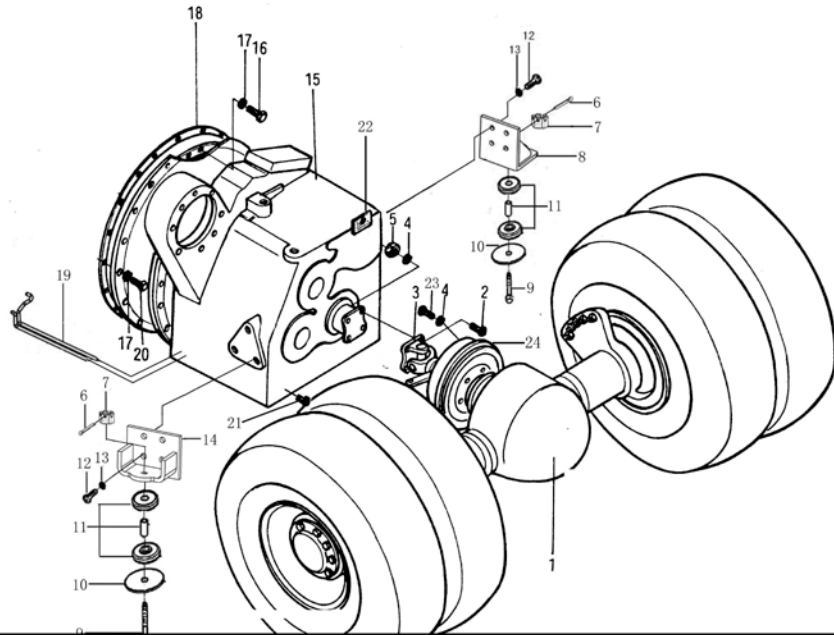
F1 CPCD50/60/70-RG24-J G CPCD50/60/70-RW14 M CPCD50/60/70-RW17-Y



序号 Item No.	代号 Part No.	名称 Description	数量 Q'ty	备注或适用车型 Remarks or Series No	物料码 Code No.
16	GB6178-86	螺母 M24 Nut M24	2		20004198
17	GR501-101000-000	双变左支架 Bracket(left)	1		70042721
18	YQXD100H1-G00	液力传动变速箱 Gear-box	1	A C F G	11010735
	YQX100H1-G00	液力传动变速箱 Gear-box		A1 F1	
	YQXD100HA-G00	液力传动变速箱 Gear-box	1	M	
19	GB5783-86	螺栓 M10 × 30 Bolt M10 × 30	12		20000004
20	GB93-87	垫圈 10 Washer 10	24		20003679
21	GB5783-86	螺栓 M10 × 25 Bolt M10 × 25	12		20000009
22	50CDA-200007	垫片 Washer	1		70002177
23	GR501-110000-000	双变冷却油路 Torque converter oil cooling pipe assembly	1		70042713

图5 传动系统
Fig.5 Driving system

L CPCD50/60/70-RW14B



序号 Item No.	代号 Part No.	名称 Description	数量 Q'ty	备注或适用车型 Remarks or Series No	物料码 Code No.
1	GR501-120000-000	驱动桥 Drive axle	1		70042720
2	50CDA-200001	螺栓 M14 Bolt M14	4		70002180
3	GR501-104000-000	传动轴总成 Shaft assembly	1	2008.10.12	70035648
4	GB93-87	垫圈 14 Washer 14	8		20000036
5	GB6170-86	螺母 M14 Nut M14	4		20000633
6	GB91-86	销 5 × 45 Pin 5 × 45	2		20001418
7	GB6178-86	螺母 M24 Nut M24	2		20004198
8	GR501-101000-000	双变左支架 Bracket(left)	1		70042721
9	H510-100002-000	螺栓 Bolt	2		70038759
10	GR501-104000-000	垫片 Washer	2		70043997
11	CB2204-3-G00	减震垫 Washer	2		11010532
12	GB5786-86	螺栓 M16 × 1.5 × 30 Bolt M16 × 1.5 × 30	8		20003258
13	GB93-87	垫圈 16 Washer16	8		20004829
14	GR508-120000-000	双变右支架 Bracket(right)	1		70049352
15	Y63180Z-00-G00	液力传动变速箱 Gear-box	1		11008786

图5 传动系统

Fig.5 Driving system

L CPCD50/60/70-RW14B

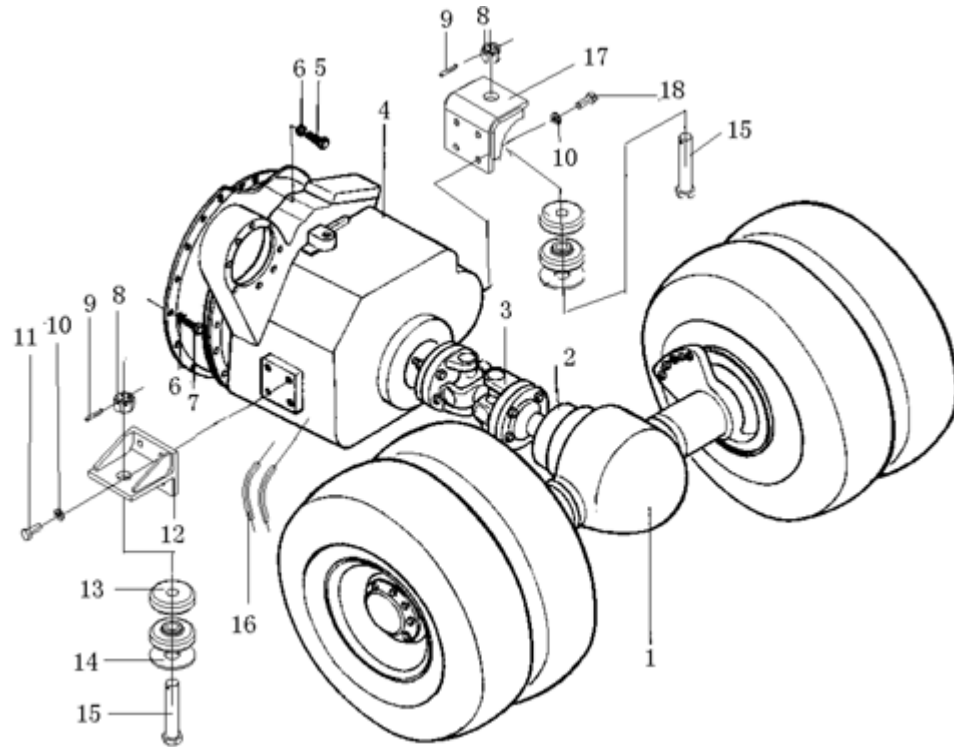
序号 Item No.	代号 Part No.	名称 Description	数量 Q'ty	备注或适用车型 Remarks or Series No	物料码 Code No.
16	GB5783-86	螺栓 M10 × 25 Bolt M10 × 25	12		20000009
17	GB93-87	垫圈 10 Washer 10	24		20003679
18	50CDA-200007	垫片 Washer	1		70002177
19	GR508-110000-000	双变冷却油路 Torque converter oil cooling pipe assembly	1		70049349
20	GB5783-86	螺栓 M10 × 30 Bolt M10 × 30	12		20000004
21	H502-100001-000	螺塞 Plug	1		70042963
22	30DHB-510001	电线固定板 Clap	1		70011583
23	GB5783-86	螺栓 M14 × 45 Bolt M14 × 45	4		20002245
24	50CDA-213000	手刹车总成 Hand brake assembly	1		70002083

图 6 传动系统

Fig. 6 Driving system

J CPCD50/60/70-RW19A

K CPCD50/60/70-RW18A



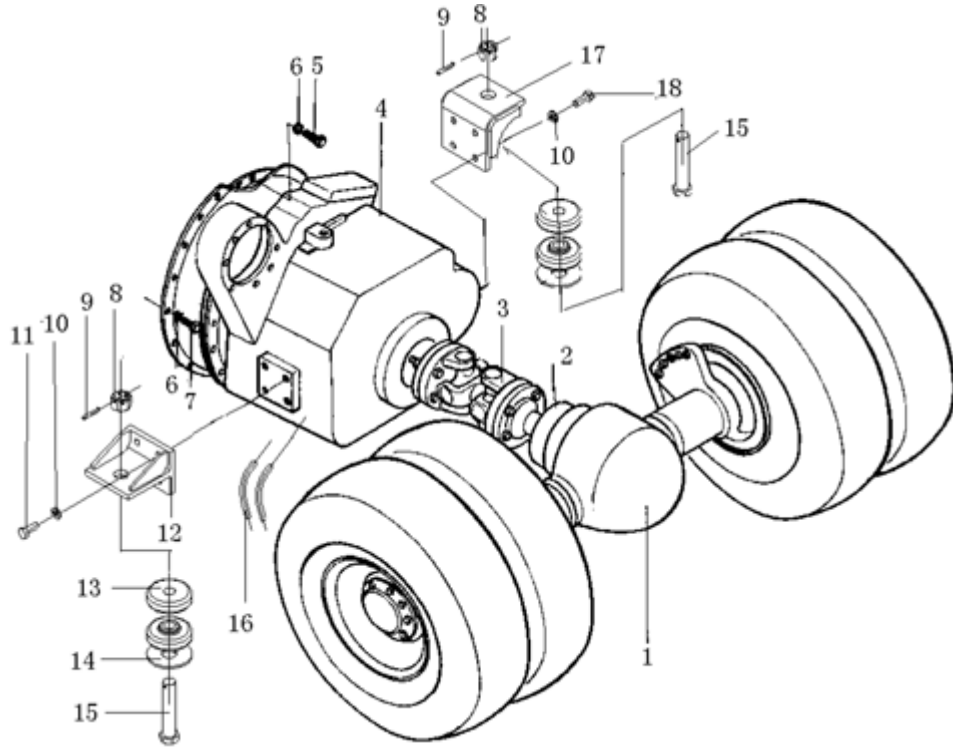
序号 Item No.	代号 Part No.	名称 Description	数量 Q'ty	备注或适 用车型 Remarks or Series No	物料码 Code No.
1	GR501-120000-000	驱动桥 Drive axle	1		70042720
2	50DCW18-200001	突缘	1		70008706
3	37005-4K000-G00	传动轴总成 Drive shaft assembly	1		11011412
4	31020-4K100-G00	液力传动变速箱 Transmission	1	J	11011413
	31020-4K000-G00	液力传动变速箱 Transmission	1	K	
5	GB5783-86	螺栓M10×25 Bolt	10		20000009
6	GB93-87	垫圈10 Washer	20		20003679
7	GB5783-86	螺栓 M10×40 Bolt	10		20000329
8	GB6178-86	螺母 M24 Nut	2		20004198
9	GB91-86	销 5×45 Pin	2		20001418
10	GB93-87	垫圈12 Washer	8		20000001
11	GB5783-86	螺栓M12×35 Bolt	4		20000002
12	GR506-100200-000	变速箱右支架 Bracket transmission mounting RH	1		70048497
13	CB2204-3-G00	减震垫 Insulator	4		11010532
14	GR501-104000-000	垫片 Spacer	2		70043997

图6 传动系统

Fig. 6 Driving system

J CPCD50/60/70-RW19A

K CPCD50/60/70-RW18A

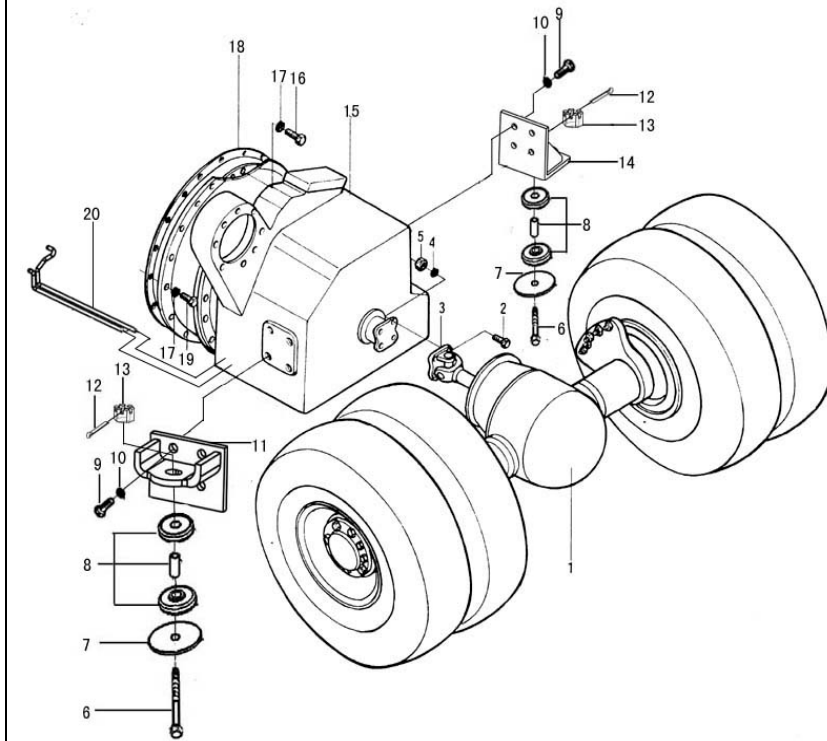


序号 Item No.	代号 Part No.	名称 Description	数量 Q'ty	备注或适 用车型 Remarks or Series No	物料码 Code No.
15	H510-100002-000	螺栓 Bolt	2		70038759
16	GR506-110000-000	双变冷却油路 Cooling pipe	1		70048496
17	GR506-100100-000	变速箱左支架 Bracket transmission mounting LH	1		70048493
18	GB5783-86	螺栓M12 × 30 Bolt	4		20000119

图7 传动系统

Fig.7 Driving system

8-10T



序号 Item No.	代号 Part No.	名称 Description	数量 Q'ty	备注或适用车型 Remarks or Series No	物料码 Code No.
1	80DH-210000	驱动桥总成 Drive axle assembly	1		70020029
2	GB5786-86	螺栓 M14 × 1.5 × 45 Bolt M14 × 1.5 × 45	8		20003256
3	80DH-220000	传动轴总成 Connect shaft	1		70020030
4	GB93-87	垫圈 14 Washer 14	8		20000036
5	GB6171-86	螺母 M14 × 1.5 Nut M14 × 1.5	8		20000529
6	H510-100002-000	螺栓 Bolt	2		70038759
7	GR501-104000-000	垫片 Washer	2		70043997
8	CB2204-3-G00	减震垫 washer	2		11010532
9	GB5786-86	螺栓 M16 × 1.5 × 30 Bolt M16 × 1.5 × 30	8		20003258
10	GB93-87	垫圈 16 Washer 16	8		20004829
11	GR1001-130000-000	双变右支架 Bracket(right)	1		70044471
12	GB91-86	销 5 × 45 Pin 5 × 45	2		20001418
13	GB6178-86	螺母 M24 Nut M24	2		20004198
14	GR1001-110000-000	双变左支架 Bracket(left)	1		70044465
15	YQXD100H1-G00	液力传动变速箱 Gear-box	1		11010735

图7 传动系统

Fig.7 Driving system

8-10T

序号 Item No.	代号 Part No.	名称 Description	数量 Q'ty	备注或适用车型 Remarks or Series No	物料码 Code No.
16	GB5783-86	螺栓 M10 × 25 Drive axle assembly	12		20000009
17	GB93-87	垫圈 10 Washer 10	24		20004814
18	50CDA-200007	垫片 Washer	1		70002177
19	GB5783-86	螺栓 M10 × 30 Bolt M10 × 30	12		20000004
20	GR1001-120000-000	双变冷却油路 Torque converter oil cooling pipe assembly	1		70044468

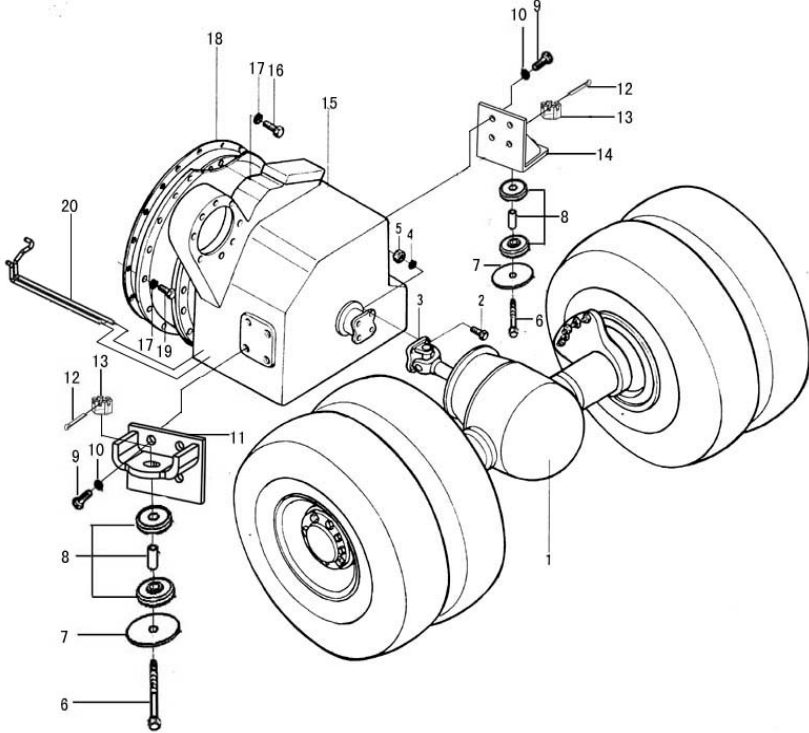
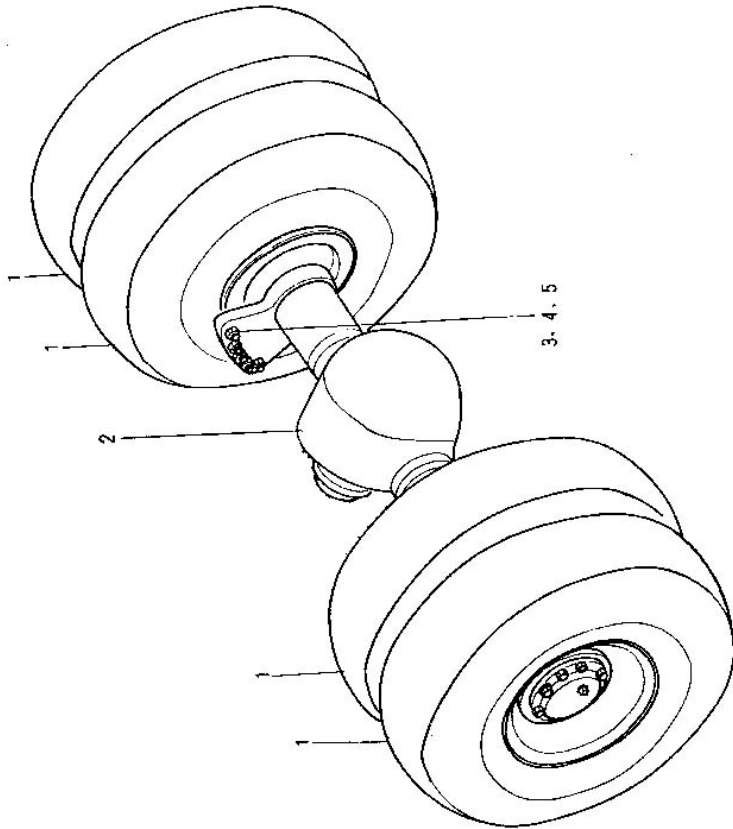


图 8 驱动桥
Fig.8 Drive axle

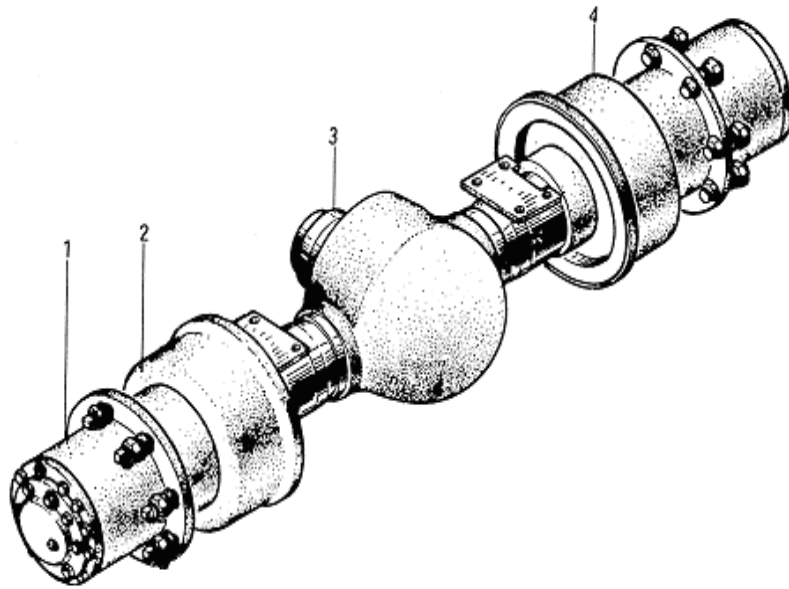
5-7T



序号 Item No.	代号 Part No.	名称 Description	数量 Q'ty	备注或适用车 型 Remarks or Series No	物料码 Code No.
1		车轮总成 Hub drive axle assembly	2		
2	06E0000-G00	驱动桥 Drive axle	1		11010734
3	GB27-88	螺栓 M24 × 85 Bolt M24 × 85	10		20002795
4	GB7244-87	垫圈 24 Washer 24	10		20002044
5	GB6170-86	螺母 M24 Nut M24	10		20000008

图 9 驱动桥
Fig.9 Drive axle body

5-7T



序号 Item No.	代号 Part No.	名称 Description	数量 Q'ty	备注或适用车型 Remarks or Series No	物料码 Code No.
1	053000G	轮边总成 Hub drive axle assembly	2		
2	50CDA-214000	制动器总成(右) Right brake	1		70002082
3	051000A	主减总成 Final drive assembly	1		
4	50CDA-215000	制动器总成(左) Left brake	1		70002081

图 10 轮边总成

Fig.10 Hub drive axle assembly

5-7t

序号 Item No.	代号 Part No.	名称 Description	数量 Q'ty	备注或适用车型 Remarks or Series No	物料码 Code No.
1	Q/8B220-77	六角螺塞M14×1.5 Plug M14×1.5	1		
2	JB1002-77	垫圈14 Washer14	1		
3	Q61401	螺塞Z1/8" -27 Plug Z1/8" -27	1		
4	053017	盖 Caver	1		
5	GB5783-86	螺栓M10×20 Bolt M10×20	6		20000322
6	GB859-87	弹簧垫圈10 Spring washer10	6		
7	053019	垫片 Washer	1		
8	GB5783-86	螺栓M12×35 Bolt M12×35	15		20000002
9	GB93-87	弹簧垫圈12 Spring washer12	15		
10	053015	行星架 Carrier-pinion gear	1		
11	053022	轴 Shaft	3		
12	GB308-77	钢球1/4" Ball1/4"	3		
13	053016	O型圈 O-ring	1		
14	053023	垫 Spacer	6		
15	053020	套 Sleeve	6		