



A TEREX BRAND

# *Parts Manual*

Serial Number Range

**S-60**

from SN 21001

**S-65**

**S-60X**

**S-60XC**

**S-60TRAX**

**S-65TRAX**

Part No. 147769

Rev A12

May 2012

## Technical Publications

Genie Industries has endeavored to deliver the highest degree of accuracy possible. However, continuous improvement of our products is a Genie policy. Therefore, product specifications are subject to change without notice.

Readers are encouraged to notify Genie of errors and send in suggestions for improvement. All communications will be carefully considered for future printings of this and all other manuals.

## Serial Number Information

Genie Industries offers the following Parts Manuals for these models:

Title	Part No
Genie S-60 Parts Manual (to serial number 652).....	28780
Genie S-60 and S-65 Parts Manual (from serial number 653 to 2574) .....	34477
Genie S-60 and S-65 Parts Manual (from serial number 2575 to 9153) .....	48411
Genie S-60 and S-65 Parts Manual (from serial number 9154 to 21000) .....	77827


## Contact Us:

<http://www.genieindustries.com>  
e-mail: [awp.techpub@terex.com](mailto:awp.techpub@terex.com)

Copyright © 1992 by Genie Industries

147769 Rev A July 2010  
Fifth Edition, First Printing

"Genie" and "S" are registered trademarks of Genie Industries in the USA and many other countries.

 Printed on recycled paper



A TEREX COMPANY

**Model:** S-60

**Serial number:** S6010-21001

**Model year:** 2010 **Manufacture date:** 03/01/10

**Electrical schematic number:** E0186

**Machine unladen weight:** 20,736lbs / 9,406kg  
Foam Tires add 764 lbs/347 kg to weight

**Rated work load (including occupants):** 500 lb / 227 kg

**Maximum number of platform occupants:** 2

**Maximum allowable side force :** 150 lb / 670 N

**Maximum allowable inclination of the chassis:**

Air Tires 2 deg / Foam Tires 4.5 deg

**Maximum wind speed :** 28 mph/ 12.5 m/s

**Maximum platform height :** 60 ft 2 in/ 18.3 m

**Maximum platform reach :** 50 ft 4 in/ 15.3 m

**Gradeability:** 45%

**Country of manufacture:** USA

**This machine complies with:**

ANSI A92.5

CAN B.354.4

**Genie Industries**

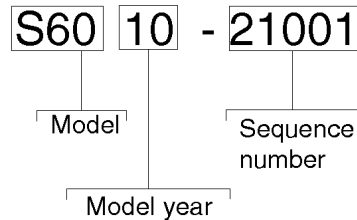
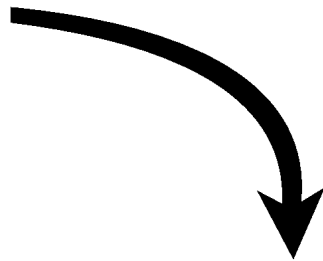
**18340 NE 76th Street**

**Redmond, WA 98052**

**USA**

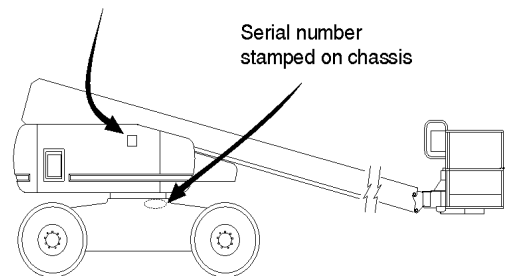


11111111



Serial label  
(located under cover)

Serial number  
stamped on chassis



## Table of Contents

This manual is updated frequently. If you have a printed manual, you can keep it up to date by downloading new figures from the Genie website at [www.genielift.com](http://www.genielift.com). For the most up-to-date parts information, visit the Parts Lookup System on the Genie website at [www.genielift.com](http://www.genielift.com).

How to Read Your Serial Number.....	3
Parts Stocking List.....	7
How to Order Parts.....	8
Service Parts Fax Order Form.....	9

**Electronic Version**

Click on any page number to view the figure.

**100 Decals**

101.1 S-60X Decals with Words (North America).....	10
102.1 S-60X Decals with Symbols (South American and Asia).....	14
103.1 S-60XC Decals with Words (North America).....	16
104.1 S-60XC Decals with Symbols (South American and Asia).....	20
105.1 S-60 TraX Decals with Words (North America).....	22
106.1 S-60 TraX Decals with Symbols (South American and Asia).....	26
107.1 S-60/65 TraX Decals with Symbols (Europe).....	28
108.1 S-60 HC Decals with Symbols (Europe).....	30
109.1 S-60/65 Decals with Symbols (Europe).....	32
110.1 S-65 Decals with Words (North America).....	34
111.1 S-65 Decals with Symbols (South American and Asia).....	38
112.1 S-65 TraX Decals with Words (North America).....	40
113.1 S-65 TraX Decals with Symbols (South American and Asia).....	44
114.1 S-60/65 Decals with Words (Australia).....	46
115.1 S-60/65 TraX with Word Decals (Australia).....	50

**200 Drive Chassis Components**

201.1 Steer End.....	54
202.1 Non-steer End.....	58
203.1 Oscillate Valve.....	62
204.1 TraX Option Steer End.....	64
205.1 TraX Option Non-Steer End.....	66
206.1 TraX Option Components.....	68

**300 Turntable Components**

301.1 Tank Side - View 1.....	70
-------------------------------	----

302.1 Tank Side - View 2.....	72
303.1 Turntable Covers.....	76
304.1 Engine Side.....	78
305.1 Ground Control Box - View 1.....	80
306.1 Ground Control Box - View 2.....	84
307.1 Wire Harness Diagram.....	86
308.1 S-60 HC Turntable - View 1.....	88
309.1 S-60 HC Turntable - View 2.....	90

**400 Manifolds and Pumps**

401.1 Function Manifold.....	92
402.1 Traction Manifold, 2WD.....	96
403.1 Traction Manifold, 4WD (to serial number 21231).....	98
403.2 Traction Manifold, 4WD (from serial number 21232).....	100
404.1 Platform Rotate and Jib Boom/Platform Rotate Manifold.....	102
405.1 Pumps.....	104
406.1 Brake and 2 Speed Manifold.....	106

**500 Engine Components**

501.1 Deutz D2011L03i.....	108
502.1 Perkins 404-22.....	112
503.1 Ford DSG-423 Engine - View 1.....	116
504.1 Ford DSG-423 Engine - View 2.....	118
505.1 Ford DSG-423 Engine - View 3.....	120
506.1 Ford DSG-423 Engine - View 4.....	122
507.1 Deutz TD2011-L04i Engine - View 1.....	124
508.1 Deutz TD2011-L04i Engine - View 2.....	126

**600 Boom Structure Components**

601.1 Linkage Assembly.....	128
602.1 Boom Components - View 1.....	132
603.1 Boom Components - View 2.....	136
604.1 Boom Limit Switch - S-60X, S-60XC and S-60 TraX (ANSI).....	138
605.1 Boom End Components.....	140
606.1 Boom End Components - S-65.....	142
607.1 Boom End Components - S-60 HC.....	144
608.1 Boom End Components - S-60X and S-60XC.....	146
609.1 Boom End Components - S-60 and S-65 CE Load Sense.....	148
610.1 S-60 HC Primary Boom Components.....	150
611.1 Cable Track.....	152

**700 Platform Components**

701.1 Platform Installation.....	154
702.1 Platform Control Box - View 1.....	158
703.1 Platform Control Box - View 2.....	162
704.1 Joysticks.....	166

**800 Hydraulic Hoses and Fittings**

801.1 Function Manifold - View 1.....	168
802.1 Function Manifold - View 2.....	172
803.1 4WD Traction Manifold.....	176
804.1 2WD Traction Manifold.....	178
805.1 Oscillate Option.....	180
806.1 Hydraulic Generator Option.....	182
807.1 Hydraulic Oil Cooler Option.....	184
808.1 Welder Option.....	186

**900 Accessories**

901.1 Alarm and Beacon Package.....	188
902.1 Platform Accessories.....	190
903.1 Air Line and Power to Platform.....	192
904.1 Tri-Entry Platform Option.....	194
905.1 Gauge Option.....	196
906.1 Hydraulic Oil Cooler Option.....	198
907.1 Cold Start Option.....	200
908.1 Hostile Environment Package, Boom Wipers.....	202
909.1 Hostile Environment Package, Turntable Components.....	204
910.1 Hostile Environment Package, Cylinder Bellows and Cable Track Protection.....	206
911.1 Hostile Environment Package, Engine Air Pre-Cleaners.....	208
912.1 Welder Option - Chassis components.....	210
913.1 Welder Option - Platform Components.....	212
914.1 Welder Option - Generator Components.....	214
915.1 Aircraft Protection Package, S-65 and S-65 TraX.....	216
916.1 Aircraft Protection Package, Deluxe, S-65 and S-65 TraX.....	218
917.1 Panel Cradle.....	220
918.1 Work Lights / Drive Lights.....	222

**Indices**

Part Number Index.....	224
Part Description Index.....	231

**Cross References**

Fittings Cross Reference.....	242
-------------------------------	-----

Notes

---

---

---

---

---

---

---

---

---

---

---

---

---

---

---

---

---

---

---

---

---

---

---

---

---

---

---

---

---

---



## Required Parts

The following parts are required to perform maintenance procedures as outlined in the *Genie S-60 and S-65 Service Manual*.

### All Models:

Description	Part No.
Hydraulic Tank Filter .....	88917
Medium Pressure Filter .....	60857
High Pressure Filter .....	60857
Dielectric Grease .....	66399
Lithium Based Grease.....(source locally)	
Drive Hub Oil (refer to Service Manual) ..(source locally)	

### Perkins 404-22 Models:

Description	Part No.
Air Filter Element.....	62420
Fuel/water Separator Element.....	62433
Engine Oil Filter.....	94762
V-belt .....	89765
Fuel Filter .....	62421

### Deutz D2011-L03i Models:

Description	Part No.
Air Filter .....	62420
Fuel/water Separator Element.....	29560
Engine Oil Filter.....	49924
V-belt .....	32698

### Deutz TD2011-L04i Models:

Description	Part No.
Air Filter .....	62425
Fuel/water Separator Element.....	29560
Engine Oil Filter.....	49924
V-belt .....	58630

### Ford DSG-423 EFI Models:

Description	Part No.
Fuel Pre-Filter.....	119984
Engine Oil Filter.....	119139
Air Filter Element.....	77295
Serpentine Belt.....	119138
PCV Valve.....	119474
Spark Plug .....	119495

## Recommended Parts

Description	Part No.
Genie Blue Paint, 1 Gallon .....	32150
Genie Blue Paint, 12 Ounce Aerosol.....	1484
Genie Gray Paint, 1 Gallon .....	32151
Genie Gray Paint, 12 Ounce Aerosol .....	1268
Plug and Cap Kit (for ORFS fittings).....	49613
Protractor Kit .....	58351

## Manuals

Genie Industries offers the following support documents for these models:

Title	Part No.
Genie S-60X ANSI/CSA Operator's Manual .....	T107102
Genie S-60TraX ANSI/CSA Operator's Manual .....	T107103
Genie S-60XC ANSI/CSA Operator's Manual .....	T107104
Genie S-65 ANSI/CSA Operator's Manual .....	T107106
Genie S-65TraX ANSI/CSA Operator's Manual .....	T107107
Genie S-60 & S-65 CE Operator's Manual .....	T107109
Genie S-60 & S-65 TraX CE Operator's Manual .....	T107110
Genie S-60 HC CE Operator's Manual .....	T107112
Genie S-60 & S-65 Aus Operator's Manual .....	T107964
Genie S-60 & S-65 TraX Aus Operator's Manual .....	T107965
Genie S-60 and S-65 Service Manual.....	147753
EMI Safety Manual .....	27581
Manual of Responsibilities ANSI A92.5 .....	31779

## How To Order Parts

Please be prepared with the following information when ordering replacement parts for your Terex or Genie product:

- Machine model number
- Machine serial number
- Part number
- Part description and quantity
- Purchase order number
- "Ship to" address
- Desired method of shipment
- Name and telephone number of the authorized distributor in your area

Use the Service Parts Fax Order Form on the next page and fax your order to our Parts Department.

If you don't know the name of your authorized distributor, or if your area is not currently serviced by an authorized distributor, please call Terex or Genie Industries.

### Machine Information

---

Model

---

Serial Number

---

Date of Purchase

---

Authorized Genie Distributor

---

Phone Number

#### North America

Telephone (425) 556-6551  
 Toll Free (877) 367-5606 in U.S.A. and Canada  
 Fax (425) 556-8659  
 Toll Free Fax (888) 274-6192

#### Europe

Parts Telephone (31) (165) 519 313  
 Parts Fax (31) (165) 511 148

#### Australia

Parts Telephone (61) (7) 3456 4444  
 Parts Fax (61) (7) 3456 4466

#### South America

Parts Telephone (55) (11) 4082 5600  
 Parts Fax (55) (11) 4082 5630





**Service Parts Fax Order Form**

Fax to: (425) 556-8659 or Toll Free: 888-274-6192  
International: +1-425-556-8659

**Please fill out completely**

Date \_\_\_\_\_ Account Number \_\_\_\_\_  
 Your Name \_\_\_\_\_ Your Fax Number \_\_\_\_\_  
 \_\_\_\_\_ Your Phone Number \_\_\_\_\_  
 Bill To \_\_\_\_\_ Ship To \_\_\_\_\_  
 \_\_\_\_\_  
 \_\_\_\_\_  
 \_\_\_\_\_  
 Purchase Order Number \_\_\_\_\_ Ship Via \_\_\_\_\_

Model(s) \_\_\_\_\_ Serial No.(s) \_\_\_\_\_

Optional Equipment \_\_\_\_\_

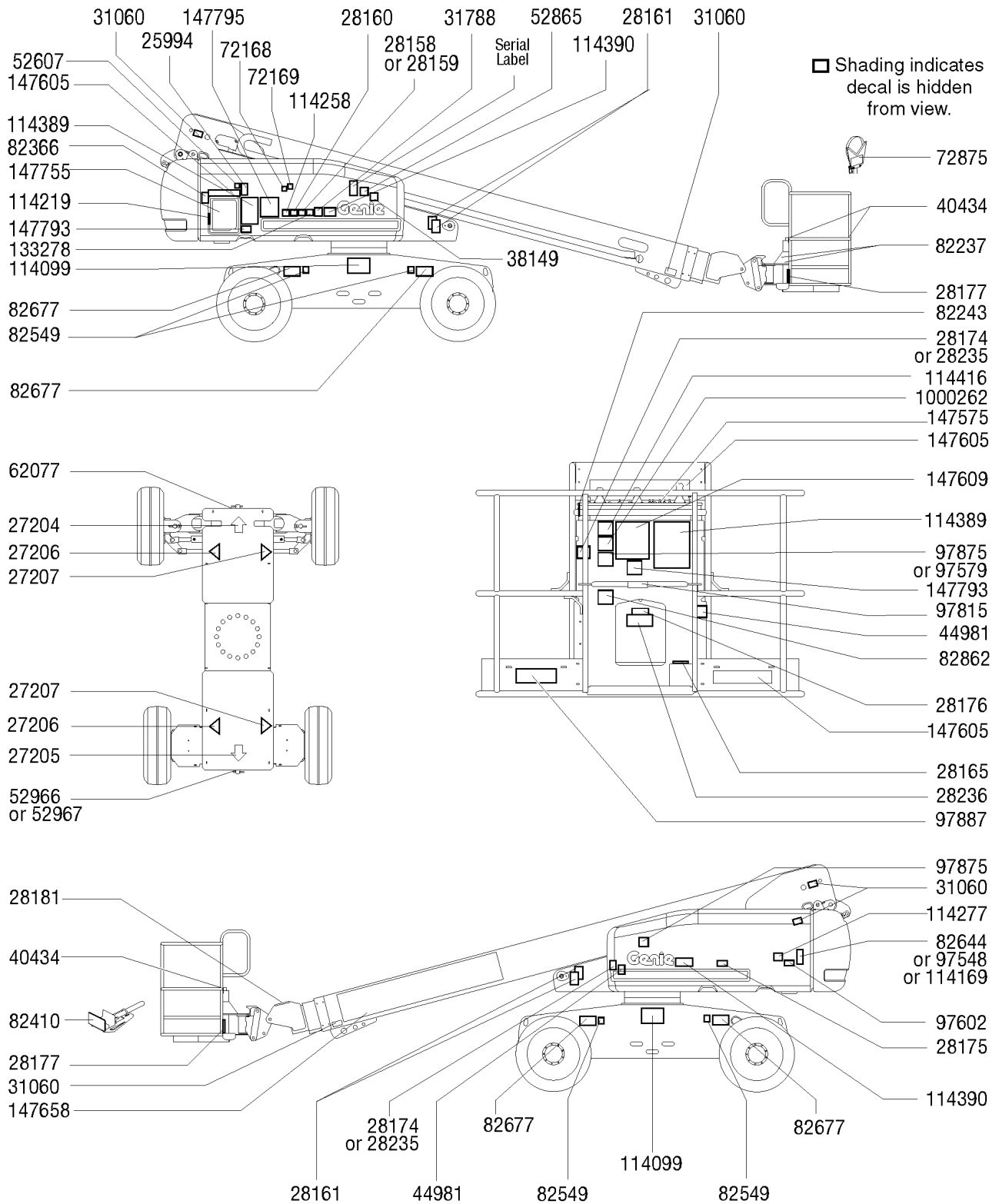
Part Number	Description	Quantity	Price

All back-ordered parts will be shipped when available via the same ship method as the original order unless Noted below:

- Ship complete order only - No back orders
- Ship all available parts and contact customer on disposition of back-ordered parts
- Other (please specify)



101.1 S-60X Decals with Words (North America)



101.1 S-60X Decals with Words (North America)

Item	Part No.	Description	Qty.	Item	Part No.	Description	Qty.
--	T108001	DECAL KIT, S-60X SERV, WORDS		--	52967	DECAL,COSMETIC,4 X 4.....	1
1	25994	DECAL,NOTICE,SHUTOFF VALVES.....	1	25	62077	DECAL,COSMETIC,S60.....	1
2	27204	DECAL,ARROW BLUE.....	1	26	72168	DECAL,LABEL,STARTER BATTERY.....	1
3	27205	DECAL,ARROW YELLOW LRG 9".....	1	27	72169	DECAL,LABEL,CONTROLS BATTERY.....	1
4	27206	DECAL,TRIANGLE,BLUE.....	2	28	72875	DECAL,WARNING,PIPE CRADLE,BOOM.....	2
5	27207	DECAL,TRIANGLE,YELLOW.....	2	29	82237	DECAL,DANGER,HIGH VOLTAGE.....	2
6	28158	DECAL,LABEL,UNLEADED GAS ONLY.....	1	30	82243	DECAL FAULT CODE.....	1
--	28159	DECAL,LABEL,DIESEL FUEL.....	1	31	82366	DECAL,LABEL-CHEVRON RANDO.....	1
7	28160	DECAL,LABEL,LIQUID PROPANE.....	1	32	82410	DECAL,WARNING,PANEL CRADLE.....	2
8	28161	DECAL,WARN,CRUSH HAZARD HAND.....	4	33	82549	DECAL,LABEL,WHEEL LOAD S60.....	4
9	28165	DECAL,INSTRUCT,FOOTSWITCH OPER.....	1			<i>S-60 CE and Australia models, S-60X and S-60XC</i>	
10	28174	DECAL,POWER TO PLATFORM 230V.....	2	34	82644	DECAL, ENGINE SPEC, PERKINS.....	1
--	28235	DECAL,POWER TO PLATFORM 115V.....	2	--	114169	DECAL,FORD ENGINE SPEC DSG423.....	1
11	28175	DECAL,WARNING-COMPART ACCESS.....	1	--	97548	DECAL,ENGINE SPEC,DEUTZ 2011.....	1
12	28176	DECAL,LABEL,MANUAL NOT HERE.....	1	35	82677	DECAL,DANGER/LABEL,TIRE SPECS.....	4
13	28177	DECAL,WARN,CRUSH HAZARD PLAT.....	2	36	82862	DECAL,FIRE EXTINGUISHER.....	1
14	28181	DECAL,WARN,NO STEP OR RIDE.....	1	37	97579	DECAL,DANGER,TIP-OVER,WELDER**.	1
15	28236	DECAL,WARN,IMPROPER OPERATION.....	1	--	97875	DECAL,WARN.WELD LINE INST.WORD.....	2
16	31060	DECAL,DANGER DO NOT ALTER SWTC.....	5	38	97602	DECAL,WARNING,EXPLOSION,ETHER.	1
17	31788	DECAL,DANGER,BATTERY SAFETY***.....	1	39	97815	DECAL,LABEL,LOWER MIDRAIL....	1
18	38149	DECAL,LABEL,PATENTS.....	1	40	114099	DECAL,LABEL,TRANSPORT DIAGRAM.....	2
19	40434	DECAL,LANYARD ANCHORAGE POINT.....	3	41	114219	DECAL,LABEL,RELAYS,S60&65....	1
20	44981	DECAL,LABEL,AIRLINE 110 PSI....	2	42	114258	DECAL,DANGER,NO SMOKING.....	1
21	97887	DECAL,INSTR,MAX SIDE FRC,ANSI.....	1	43	114277	DECAL,LABEL,BELT ROUTING DSG.....	1
22	52607	DECAL,LABEL,TEST***.....	1	44	114389	DECAL,DANGER,GENERAL SAFETY***.....	2
		<i>(Ford models only)</i>		45	114390	DECAL,DANGER,ELECT HAZARD***.....	2
23	52865	DECAL,ANNUAL INSP***.....	1	46	114416	DECAL,DANGER,TIPOVER,TILT....	1
24	52966	DECAL,COSMETIC,4 X 2.....	1				

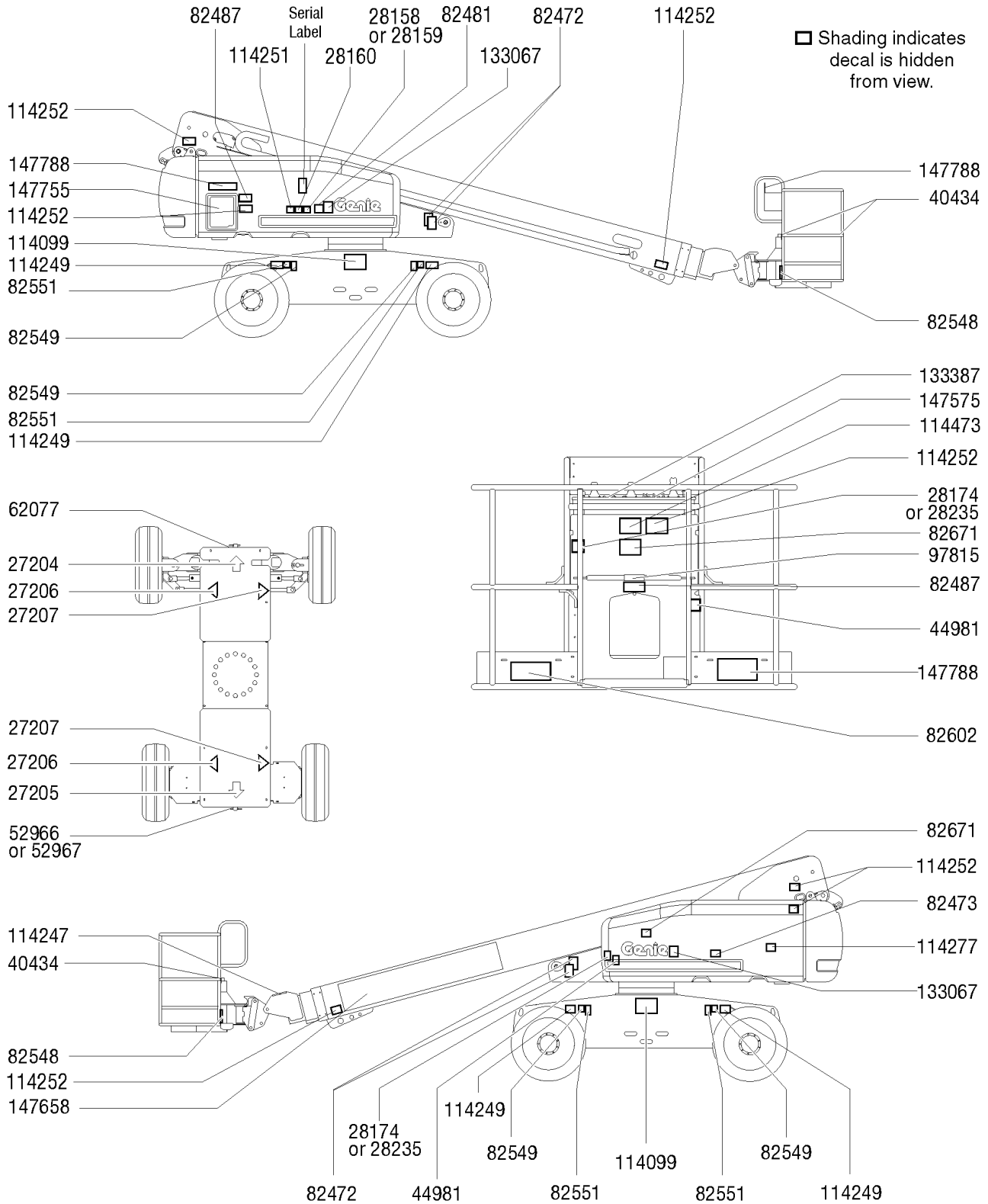


101.1 S-60X Decals with Words (North America)  
(continued)

Item	Part No.	Description	Qty.
47	133278	DECAL,LOW/ULTRA LOW SULFR FUEL.....1 <i>(Diesel models only)</i>	1
48	147575	DECAL, PLAT CNTL PNL 60X 80X.....1 S-60X	1
49	147605	DECAL,INST PLAT CAP 60X.....3 S-60X	3
50	147609	DECAL, INST, OPER INST 60X PLT.....1 S-60X	1
51	147658	DECAL,COSM GENIE S60X.....1 S-60X	1
52	147755	DECAL,GR CNTL PNL 60X 80X....1 S-60X	1
53	147793	DANGER, TIPOVR, MAX CAP.....2	2
54	147795	DECAL, OPER INST 6080X GRD....1 S-60X	1
55	1000262	DECAL,DANGER,TIP OVER,PLAT.....1	1
56	77046	SERIAL # LABEL,MYLAR 4X8***.....1	1

***This Page Intentionally Left Blank***

102.1 S-60X Decals with Symbols (South American and Asia)

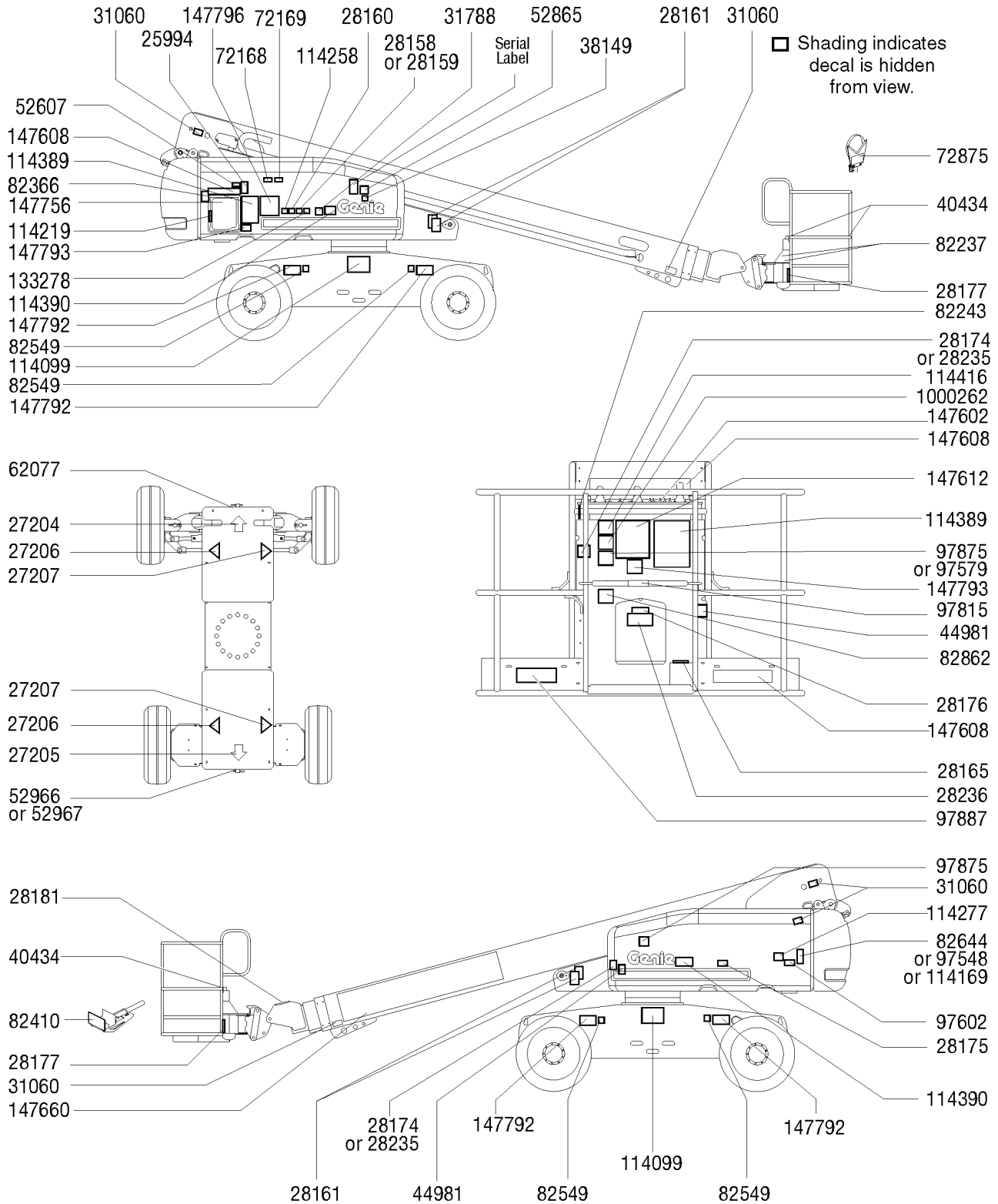


102.1 S-60X Decals with Symbols (South American and Asia)

Item	Part No.	Description	Qty.	Item	Part No.	Description	Qty.
--	T108002	DECAL KIT, S-60X SERV, SYMBOLS		23	114099	DECAL,LABEL,TRANSPORT DIAGRAM.....	2
1	27204	DECAL,ARROW BLUE.....	1	24	114247	DECAL,LABEL,FALL HAZARD*** ....	1
2	27205	DECAL,ARROW YELLOW LRG 9" .....	1	25	114249	DECAL,LABEL,TIPOVER,TIRES,SYMB.	4
3	27206	DECAL,TRIANGLE,BLUE.....	2	26	114251	DECAL,LABEL,NO SMOKING,SYMB.....	1
4	27207	DECAL,TRIANGLE,YELLOW.....	2	27	114252	DECAL,LABEL,TIP OVER LMT SWTCH.....	7
5	28158	DECAL,LABEL,UNLEADED GAS ONLY .....	1	28	114473	DECAL,DANGER,TIPOVER,TILT SYM.....	1
--	28159	DECAL,LABEL,DIESEL FUEL.....	2	29	133067	DECAL,DANGER,ELEC.HAZ.STAY CLR.....	2
6	28160	DECAL,LABEL,LIQUID PROPANE .....	1	30	133387	DECAL,DRIVE ENABLE PATCH....	1
7	28174	DECAL,POWER TO PLATFORM 230V.....	2	31	147575	DECAL, PLAT CNTL PNL 60X 80X.....	1
--	28235	DECAL,POWER TO PLATFORM 115V.....	2			S-60X	
8	40434	DECAL,LANYARD ANCHORAGE POINT.....	3	32	147658	DECAL,COSM GENIE S60X.....	1
9	44981	DECAL,LABEL,AIRLINE 110 PSI.....	2			S-60X	
10	52966	DECAL,COSMETIC,4 X 2.....	1	33	147755	DECAL,GR CNTL PNL 60X 80X.....	1
--	52967	DECAL,COSMETIC,4 X 4.....	1			S-60X	
11	62077	DECAL,COSMETIC,S60.....	1	34	147788	DECAL,INST PLAT CAP 60X SYM.....	3
12	82472	DECAL,WARNING,CRUSHING HAZARD.....	4			S-60X	
13	82473	DECAL,SYMBOL-COMP ACCESS.....	1	35	77046	SERIAL # LABEL,MYLAR 4X8*** .....	1
14	82481	DECAL,SYMBOL-BATTERY SAFETY.....	1				
15	82487	DECAL,SYMBOL-READ THE MANUAL.....	2				
16	82548	DECAL,WARN,CRUSH HAZARD PLAT.....	2				
17	82549	DECAL,LABEL,WHEEL LOAD S60.....	4				
		<i>S-60 CE and Australia models, S-60X and S-60XC</i>					
18	82551	DECAL,LABEL,TIRE PRESSURE S60.....	4				
19	82602	DECAL,DANGER,MAX SIDE FRC,667N.....	1				
20	82671	DECAL,LABEL,WELD LINE INST,SYM.....	2				
21	97815	DECAL,LABEL,LOWER MIDRAIL....	1				
22	114277	DECAL,LABEL,BELT ROUTING DSG.....	1				



103.1 S-60XC Decals with Words (North America)





103.1 S-60XC Decals with Words (North America)

Item	Part No.	Description	Qty.	Item	Part No.	Description	Qty.
--	T108005	DECAL KIT, S-60XC SERV, WORDS		--	52967	DECAL, COSMETIC, 4 X 4.....	1
1	25994	DECAL, NOTICE, SHUTOFF VALVES.....	1	25	62077	DECAL, COSMETIC, S60.....	1
2	27204	DECAL, ARROW BLUE.....	1	26	72168	DECAL, LABEL, STARTER BATTERY.....	1
3	27205	DECAL, ARROW YELLOW LRG 9".....	1	27	72169	DECAL, LABEL, CONTROLS BATTERY.....	1
4	27206	DECAL, TRIANGLE, BLUE.....	2	28	72875	DECAL, WARNING, PIPE CRADLE, BOOM.....	2
5	27207	DECAL, TRIANGLE, YELLOW.....	2	29	82243	DECAL FAULT CODE.....	1
6	28158	DECAL, LABEL, UNLEADED GAS ONLY.....	1	30	82237	DECAL, DANGER, HIGH VOLTAGE.....	2
--	28159	DECAL, LABEL, DIESEL FUEL.....	1	31	82366	DECAL, LABEL-CHEVRON RANDO.....	1
7	28160	DECAL, LABEL, LIQUID PROPANE.....	1	32	82410	DECAL, WARNING, PANEL CRADLE.....	2
8	28161	DECAL, WARN, CRUSH HAZARD HAND.....	4	33	82549	DECAL, LABEL, WHEEL LOAD S60.....	4
9	28165	DECAL, INSTRUCT, FOOTSWITCH OPER.....	1			<i>S-60 CE and Australia models, S-60X and S-60XC</i>	
10	28174	DECAL, POWER TO PLATFORM 230V.....	2	34	82644	DECAL, ENGINE SPEC, PERKINS.....	1
--	28235	DECAL, POWER TO PLATFORM 115V.....	2	--	114169	DECAL, FORD ENGINE SPEC DSG423.....	1
11	28175	DECAL, WARNING-COMPART ACCESS.....	1	--	97548	DECAL, ENGINE SPEC, DEUTZ 2011.....	1
12	28176	DECAL, LABEL, MANUAL NOT HERE.....	1	35	82862	DECAL, FIRE EXTINGUISHER.....	1
13	28177	DECAL, WARN, CRUSH HAZARD PLAT.....	2	36	97579	DECAL, DANGER, TIP-OVER, WELDER**.	1
14	28181	DECAL, WARN, NO STEP OR RIDE.....	1	--	97875	DECAL, WARN. WELD LINE INST. WORD.....	2
15	28236	DECAL, WARN, IMPROPER OPERATION.....	2	37	97602	DECAL, WARNING, EXPLOSION, ETHER.	1
16	31060	DECAL, DANGER DO NOT ALTER SWTC.....	5	38	97815	DECAL, LABEL, LOWER MIDRAIL....	1
17	31788	DECAL, DANGER, BATTERY SAFETY***.....	1	39	114099	DECAL, LABEL, TRANSPORT DIAGRAM.....	2
18	38149	DECAL, LABEL, PATENTS.....	1	40	114219	DECAL, LABEL, RELAYS, S60&65....	1
19	40434	DECAL, LANYARD ANCHORAGE POINT.....	3	41	114258	DECAL, DANGER, NO SMOKING....	1
20	44981	DECAL, LABEL, AIRLINE 110 PSI....	2	42	114277	DECAL, LABEL, BELT ROUTING DSG.....	1
21	97887	DECAL, INSTR, MAX SIDE FRC, ANSI.....	1	43	114389	DECAL, DANGER, GENERAL SAFETY***.....	2
22	52607	DECAL, LABEL, TEST***.....	1	44	114390	DECAL, DANGER, ELECT HAZARD***.....	2
		<i>(Ford models only)</i>		45	114416	DECAL, DANGER, TIPOVER, TILT....	1
23	52865	DECAL, ANNUAL INSP***.....	1	46	133278	DECAL, LOW/ULTRA LOW SULFR FUEL.....	1
24	52966	DECAL, COSMETIC, 4 X 2.....	1			<i>(Diesel models only)</i>	



103.1 S-60XC Decals with Words (North America)  
(continued)

Item	Part No.	Description	Qty.
47	147602	DECAL, PLAT CNTL PNL 60XC.....1 S-60XC	
48	147608	DECAL,INST PLAT CAP 60XC.....3 S-60XC	
49	147612	DECAL,INST OPER INST 60XC.....1 S-60XC	
50	147660	DECAL,COSM GENIE S60XC.....1 S-60XC	
51	147756	DECAL,GR CNTL PNL 60XC.....1 S-60XC	
52	147792	DANGER, TIPOVR, TIRES FF ONLY .....4 S-60XC	
53	147793	DANGER, TIPOVR, MAX CAP.....2	
54	147796	DECAL, OPER INST 60XC GRD.....1 S-60XC	
55	1000262	DECAL,DANGER,TIP OVER,PLAT.....1	
56	77046	SERIAL # LABEL,MYLAR 4X8*** .....1	



***This Page Intentionally Left Blank***

### 104.1 S-60XC Decals with Symbols (South American and Asia)

