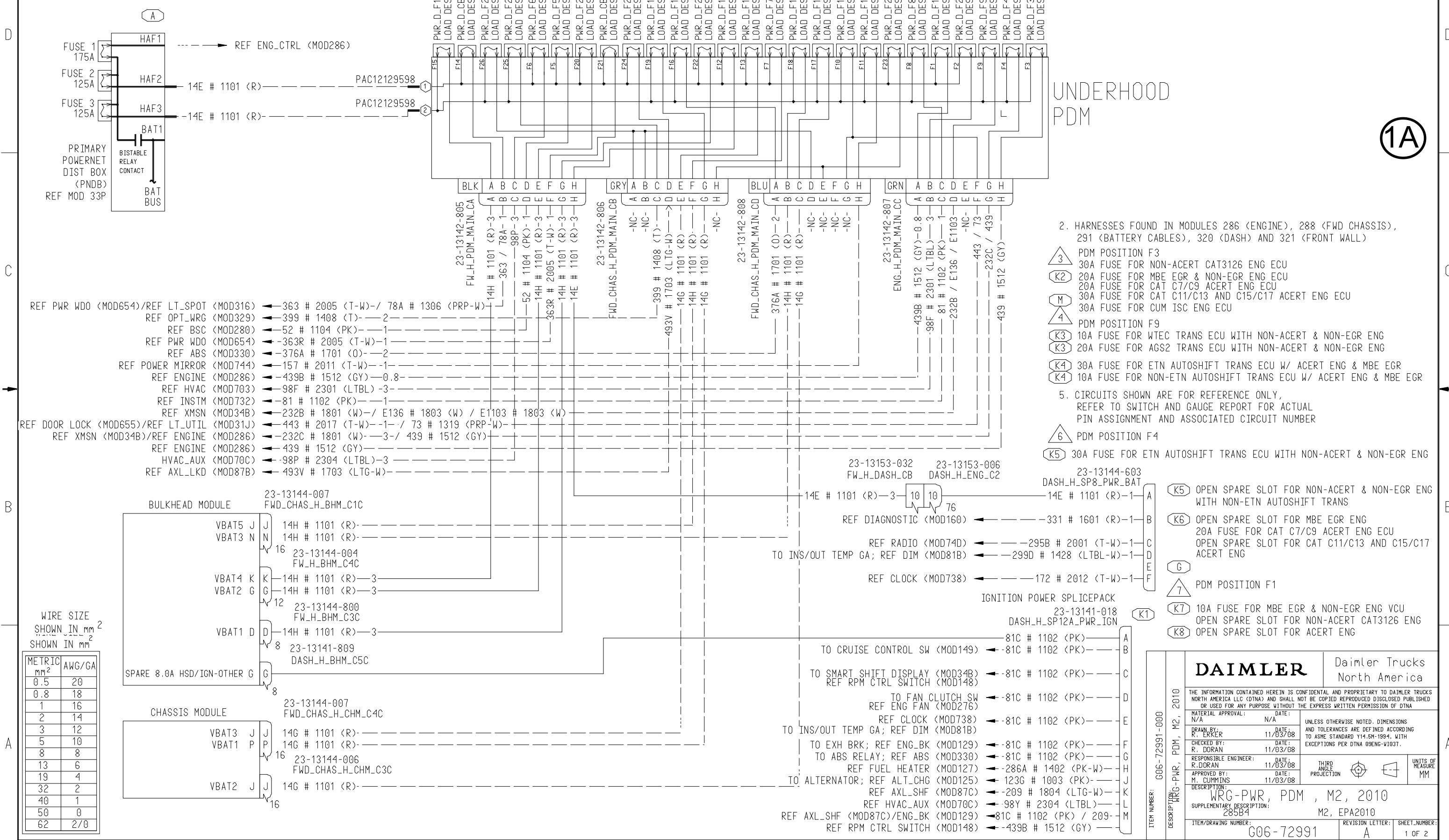


BUSINESS CLASS M2

Page #	Drawing #	Description
1	G06-72991-000	POWER DIST
2	G06-81114-000	WRG-Grounding M2
3	G06-74143-000	WRG-HVAC Main M2
4	G06-47049-000	Ext Lighting, Headlamps
5	G06-43139-000	Ext Lighting, Markers
6	G06-43137-000	WRG-LT, TRN, SP
7	G06-72977-000	WRG-DIM, Instrument CLST,2010
8	G06-73297-000	DWG-WRG, ST SP,M2 EPA 2010
9	G06-47788-000	WRG-LT RDLP, Fog Road Lamps
10	G06-40178-000	Smart Switches
11	G06-71904-000	WRG-Datalink, DIGN, 2010
12	G06-59559-000	WRG-ENG Ctrl, CUM, M2
13	G06-40556-000	WRG-HTD Mirror, M2
14	G06-49893-000	WRG-SEM MOD,3 SMART SWITCHES
15	G06-42213-000	WRG-PTO Controls, M2
16	G06-79891-000	WRG-PTO, PNEU PTO, M2, EPA2010
17	G06-71833-000	WRG-MUX CTRL, Gateway
18	G06-44429-000	WRG-BK SVCE HYD, Hydromax

POWER DISTRIBUTION SYSTEM-EPA2010 PNEUMATIC/HYDRAULIC (PWR)

RELEASE NUMBER	REV LTR	ZONE	REVISION DESCRIPTION	BY	DATE	APPD
P33964-04	-	-	INITIAL RELEASE	RWE	11/03/08	M.C
P39670-11	A	D8	MAS MEGAFUSE JB, IS PWR NET DIST BOX	MND	04/07/10	GAP



UNDERHOOD
PDM

1A

- HARNESSES FOUND IN MODULES 286 (ENGINE), 288 (FWD CHASSIS), 291 (BATTERY CABLES), 320 (DASH) AND 321 (FRONT WALL)
- 3 PDM POSITION F3
 - 30A FUSE FOR NON-ACERT CAT3126 ENG ECU
 - 20A FUSE FOR MBE EGR & NON-EGR ENG ECU
 - 20A FUSE FOR CAT C7/C9 ACERT ENG ECU
 - 30A FUSE FOR CAT C11/C13 AND C15/C17 ACERT ENG ECU
 - 30A FUSE FOR CUM ISC ENG ECU
 - 4 PDM POSITION F9
 - 10A FUSE FOR WTEC TRANS ECU WITH NON-ACERT & NON-EGR ENG
 - 20A FUSE FOR AGS2 TRANS ECU WITH NON-ACERT & NON-EGR ENG
 - 30A FUSE FOR ETN AUTOSHIFT TRANS ECU W/ ACERT ENG & MBE EGR
 - 10A FUSE FOR NON-ETN AUTOSHIFT TRANS ECU W/ ACERT ENG & MBE EGR
 - 5. CIRCUITS SHOWN ARE FOR REFERENCE ONLY, REFER TO SWITCH AND GAUGE REPORT FOR ACTUAL PIN ASSIGNMENT AND ASSOCIATED CIRCUIT NUMBER
 - 6 PDM POSITION F4
 - K5 30A FUSE FOR ETN AUTOSHIFT TRANS ECU WITH NON-ACERT & NON-EGR ENG
 - 23-13144-603 DASH_H.SP8_PWR_BAT
 - K5 OPEN SPARE SLOT FOR NON-ACERT & NON-EGR ENG WITH NON-ETN AUTOSHIFT TRANS
 - K6 OPEN SPARE SLOT FOR MBE EGR ENG
 - 20A FUSE FOR CAT C7/C9 ACERT ENG ECU
 - OPEN SPARE SLOT FOR CAT C11/C13 AND C15/C17 ACERT ENG
 - G PDM POSITION F1
 - K7 10A FUSE FOR MBE EGR & NON-EGR ENG VCU
 - OPEN SPARE SLOT FOR NON-ACERT CAT3126 ENG
 - K8 OPEN SPARE SLOT FOR ACERT ENG

WIRE SIZE SHOWN IN mm² SHOWN IN mm

METRIC mm ²	AWG/GA
0.5	20
0.8	18
1	16
2	14
3	12
5	10
8	8
13	6
19	4
32	2
40	1
50	0
62	2/0

DAIMLER		Daimler Trucks North America	
THE INFORMATION CONTAINED HEREIN IS CONFIDENTIAL AND PROPRIETARY TO DAIMLER TRUCKS NORTH AMERICA LLC (DTNA) AND SHALL NOT BE COPIED REPRODUCED DISCLOSED PUBLISHED OR USED FOR ANY PURPOSE WITHOUT THE EXPRESS WRITTEN PERMISSION OF DTNA			
MATERIAL APPROVAL:	DATE:	UNLESS OTHERWISE NOTED, DIMENSIONS AND TOLERANCES ARE DEFINED ACCORDING TO ASME STANDARD Y14.5M-1994, WITH EXCEPTIONS PER DTNA 09ENG-V1037.	
N/A	N/A		
DRAWN BY:	DATE:		
R. EKKER	11/03/08		
CHECKED BY:	DATE:		
R. DORAN	11/03/08		
RESPONSIBLE ENGINEER:	DATE:	THIRD ANGLE PROJECTION	UNITS OF MEASURE
R. DORAN	11/03/08		MM
APPROVED BY:	DATE:		
M. CUMMINS	11/03/08		
DESCRIPTION: WRG-PWR, PDM, M2, 2010			
SUPPLEMENTARY DESCRIPTION: 285B4 M2, EPA2010			
ITEM/DRAWING NUMBER:	REVISION LETTER:	SHEET NUMBER:	
G06-72991	A	1 OF 2	

sheet:1 schemat.ic \$FTL/ftl_data/Product/M2/M1/eng/Diagrams/PWR/606-72991.A.M2.PWR.ELEC.ENG.2010.PNEU_AND_HYD DMS FILE LOC = PDX MENTOR LAST FILE = Thu Apr 8 09:14:46 2010 PLOT DATE = xx/xx/xx/ xx:xx:xx

RELEASE NUMBER	REV LTR	ZONE	REVISION DESCRIPTION	BY	DATE	APPD
P33964-04	-	-	INITIAL RELEASE	RWE	11/03/08	M.C
P39670-11	A	-	SEE SHEET 1	MND	04/07/10	GAP

BULKHEAD MODULE (BHM)

POWER SOURCE	LOADS
VBAT1	ABS - IGNITION A/C CLUTCH DOME LAMPS DOME LAMP SWITCHED ENGINE - IGNITION FUEL WATER SENSOR POWER LEFT LOW BEAM SMART SWITCHES TRANSMISSION - IGNITION VCU - IGNITION
VBAT2	HORN ACCESSORY - HVAC LEFT HIGH BEAM ACCESSORY - RADIO WAKE UP (ICU3-M2) WIPER HIGH
VBAT3	PANEL LAMPS PANEL LAMPS (SMART SWITCH) SPARE 8.0A HSD - IGNITION WIPER LOW
VBAT4	WASHER PUMP 12V OUPUT (CIGAR LIGHTER) CLEARANCE LAMPS LICENSE PLATE LAMPS TAIL LAMPS TRAILER TAIL RELAY
VBAT5	SPARE 8.5A (UTILITY LIGHT/SPOT LIGHT) LEFT HEATED MIRROR RIGHT HEATED MIRROR

CHASSIS MODULE (CHM)


POWER SOURCE	LOADS
VBAT1	RIGHT LOW BEAM TURN RIGHT FRONT/SIDE TURN RIGHT REAR RIGHT STOP LAMP LEFT STOP LAMP RIGHT DRL FOG/ROAD LAMPS
VBAT2	LEFT PARK LAMP RIGHT PARK LAMP LEFT MARKER LAMP RIGHT MARKER LAMP TRAILER MARKER RELAY RIGHT HIGH BEAM LEFT BACKUP LAMP RIGHT BACKUP LAMP BACKUP ALARM TURN LEFT FRONT/SIDE TURN LEFT REAR LEFT DRL
VBAT3	FUEL WATER SEPARATOR HEATER/HSD AMU SOLENOID #0 AMU SOLENOID #1 AMU SOLENOID #2 AMU SOLENOID #3

POWER DISTRIBUTION SYSTEM - PNEUMATIC ABS (PWR)

WIRE SIZE
SHOWN IN mm²

METRIC mm ²	AWG/GA
0.5	20
0.8	18
1	16
2	14
3	12
5	10
8	8
13	6
19	4
32	2
40	1
50	0
62	2/0

1B

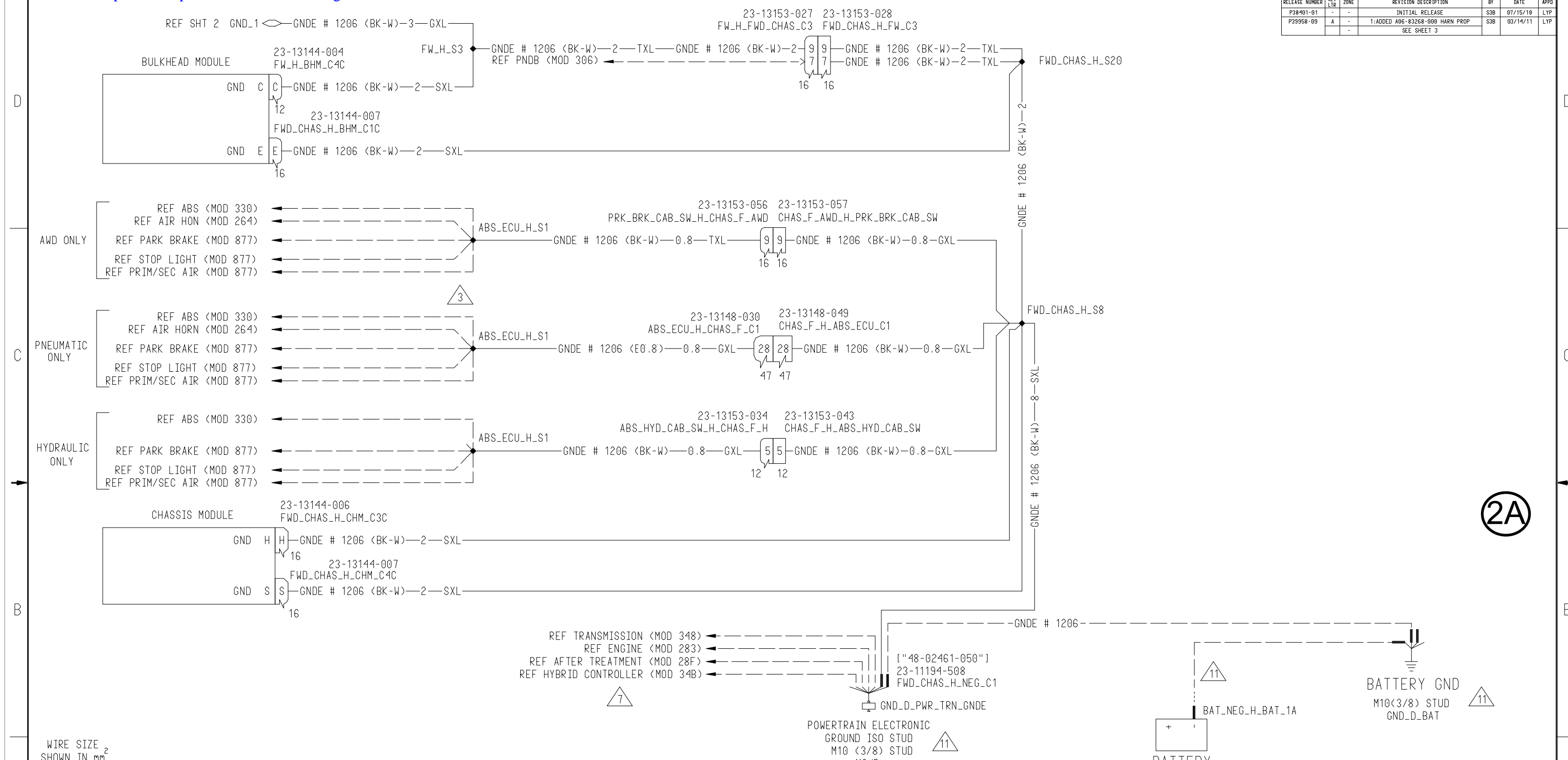
DAIMLER		Daimler Trucks North America	
<small>THE INFORMATION CONTAINED HEREIN IS CONFIDENTIAL AND PROPRIETARY TO DAIMLER TRUCKS NORTH AMERICA LLC (DTNA) AND SHALL NOT BE COPIED REPRODUCED DISCLOSED PUBLISHED OR USED FOR ANY PURPOSE WITHOUT THE EXPRESS WRITTEN PERMISSION OF DTNA</small>			
MATERIAL APPROVAL: N/A	DATE: N/A	UNLESS OTHERWISE NOTED, DIMENSIONS AND TOLERANCES ARE DEFINED ACCORDING TO ASME STANDARD Y14.5M-1994, WITH EXCEPTIONS PER DTNA 09ENG-V1037.	
DRAWN BY: R. ERKER	DATE: 11/03/08	<small>THIRD ANGLE PROJECTION</small> 	
CHECKED BY: R. DORAN	DATE: 11/03/08		
RESPONSIBLE ENGINEER: R. DORAN	DATE: 11/03/08	UNITS OF MEASURE: MM	
APPROVED BY: M. CUMMINS	DATE: 11/03/08		
DESCRIPTION: WRG-PWR, PDM, M2, 2010			
SUPPLEMENTARY DESCRIPTION: 285B4 M2, EPA2010			
ITEM/DRAWING NUMBER: G06-72991	REVISION LETTER: A	SHEET NUMBER: 2 OF 2	

FILE PATH = \$FTL/ftl_data/Product/M2/Mirroring_Diagrams/PWR/606-72991_A.M2.PWR-ELEC-ENG_2010_PNEU_AND_HYD
 sheet 2
 schematic
 DMS FILE LOC = PDX MENTOR
 LAST FILE = Thu Apr 8 09:14:50 2010
 PLOT DATE = xx/xx/xx/xx

Freightliner Business Class M2 Electrical Schematic

Full download: <http://manualplace.com/download/freightliner-business-class-m2-electrical-schematic/>

RELEASE NUMBER	REV LTR	ZONE	REVISION DESCRIPTION	BY	DATE	APPD
P38401-01	-	-	INITIAL RELEASE	S3B	07/15/10	LYP
P39958-09	A	-	1:ADDED A06-83268-000 HARN PROP	S3B	03/14/11	LYP
			SEE SHEET 3			



WIRE SIZE SHOWN IN mm²

METRIC mm ²	AWG/GA
0.5	20
0.8	18
1	16
2	14
3	12
5	10
8	8
13	6
19	4
32	2
40	1
50	0
62	2/0

- REFERENCE CIRCUITS FOR OPTIONAL FEATURES MAY NOT BE PRESENT
- ACTUAL CAVITY LOCATIONS TO BE DETERMINED THROUGH CIRCUIT TO PIN REPORT
- CIRCUIT PATH IS DETERMINED BY PNEUMATIC OR HYDRAULIC ABS

GROUND - ALL ENGINES (GND)

- △ 4 OVERHEAD WIRING DOES NOT EXIST FOR B2
- △ 5 OPTIONAL FLOOR HARNESS FOR BACKWALL GROUNDS
- △ 6 SHOP PRACTICE ALLOWS GROUNDS AT BACK OF CAB TO BE USED INTERCHANGEABLY
- △ 7 ISB HYBRID ONLY
- △ 8 ISB ENGINES
- △ 9 ISC ENGINES
- △ 10 DCX ENGINES
- △ 11 WIRING IS REFERENCE MOD 306

2A

ITEM NUMBER: G06-81114-000	DAIMLER		Daimler Trucks North America	
	THE INFORMATION CONTAINED HEREIN IS CONFIDENTIAL AND PROPRIETARY TO DAIMLER TRUCKS NORTH AMERICA LLC (DTNA) AND SHALL NOT BE COPIED REPRODUCED DISCLOSED PUBLISHED OR USED FOR ANY PURPOSE WITHOUT THE EXPRESS WRITTEN PERMISSION OF DTNA			
	MATERIAL APPROVAL: N/A	DATE: N/A	UNLESS OTHERWISE NOTED, DIMENSIONS AND TOLERANCES ARE DEFINED ACCORDING TO ASME STANDARD Y14.5M-1994, WITH EXCEPTIONS PER DTNA 09ENG-V1037.	
	DRAWN BY: S. BRJAK	DATE: 07/15/10	THIRD ANGLE PROJECTION	
CHECKED BY: T. KLEEN	DATE: 07/15/10			
RESPONSIBLE ENGINEER: T. KLEEN	DATE: 07/15/10			
APPROVED BY: L. PARKINSON	DATE: 07/15/10			
DESCRIPTION: WRG-GROUNDING, M2				
SUPPLEMENTARY DESCRIPTION: 280B3 EPA 2010				
ITEM/DRAWING NUMBER: G06-81114		REVISION LETTER: A	SHEET NUMBER: 1 OF 3	

FILE PATH = \$FTL/ftl_data/Product/M2/Mirroring/Diagrams/GND/G06-81114 - M2_GND_201000JMMINS.ENGINE schematic sheet 1
 DMS FILE LOC = PDX MENTOR
 LAST FILE = Wed Jul 21 16:12:13 2010
 PLOT DATE = Sat, July 31, 2010, 11:26:27 am.