

OWNER AND VEHICLE INFORMATION	
OWNER NAME:	_____
USER/COMPANY NAME:	_____
MAILING ADDRESS:	_____
CITY, STATE:	_____ ZIP: _____
VEHICLE IDENTIFICATION NUMBER:	_____
DATE OF DELIVERY (WARRANTY START DATE):	____ / ____ / ____ MO. DAY YR.

SELLING DEALER IMPRINT HERE

Foreword

Thank you for purchasing a Sterling 360™ vehicle.

This manual explains proper vehicle handling, simple maintenance practices, and the periodic maintenance schedule to ensure that you are able to drive your vehicle safely and comfortably.

For your reference, keep this manual in the vehicle at all times.

Lubrication

When performed on a regular basis, lubricating the parts of your vehicle is the least costly way of obtaining safe and reliable vehicle operation. Added benefits and savings occur when you check that the engine, undercarriage, and noise emission control parts are in good working order during lubrication.

This manual explains when you should lubricate parts and what to look for when checking for wear or damage.

Environmental Concerns and Recommendations

Whenever you see instructions in this manual to discard materials, you should attempt to reclaim and recycle them. To preserve our environment, follow appropriate environmental rules and regulations when disposing of materials.

NOTICE: Parts Replacement Considerations

Do not replace suspension, axle, or steering parts (such as springs, wheels, hubs, and steering gears) with used parts. Used parts may have been subjected to collisions or improper use and have undetected structural damage.



© 2008-2009 Daimler Trucks North America LLC

All rights reserved. No part of this publication, in whole or in part, may be translated, reproduced, stored in a retrieval system, or transmitted in any form by any means, electronic, mechanical, photocopying, recording, or otherwise, without the prior written permission of Daimler Trucks North America LLC. Daimler Trucks North America LLC is a Daimler company.

**Daimler Trucks North America LLC
Service Systems and Documentation (POC-SSD)
P.O. Box 3849
Portland OR 97208-3849**

Printed in U.S.A.

Symbols and alert messages

- Descriptions and specifications in this manual were in effect at the time of printing. Sterling Truck Corporation reserves the right to discontinue models and to change specifications or design at any time without notice and without incurring obligation. Descriptions and specifications contained in this publication provide no warranty, expressed or implied, and are subject to revisions and editions without notice.
- The following symbols are used throughout this handbook:
 -  : optional equipment
 -  : cross-reference to another page that contains relevant information about the subject.
- This manual contains important hazard messages under the following four headings that identify the nature and importance of the information:

DANGER 

Imminent hazards that will result in severe personal injury or death.

WARNING 

Hazards or unsafe practices that could result in severe personal injury or death.

CAUTION 

Hazards or unsafe practices that could result in minor personal injury and/or damage to products or property.

NOTE:

Relevant information that is helpful or informative but not associated with any risk or hazard.

- California Proposition 65 Warning

DANGER 

THIS PRODUCT CONTAINS OR EMITS CHEMICALS KNOWN TO THE STATE OF CALIFORNIA TO CAUSE CANCER AND BIRTH DEFECTS OR OTHER REPRODUCTIVE HARM.

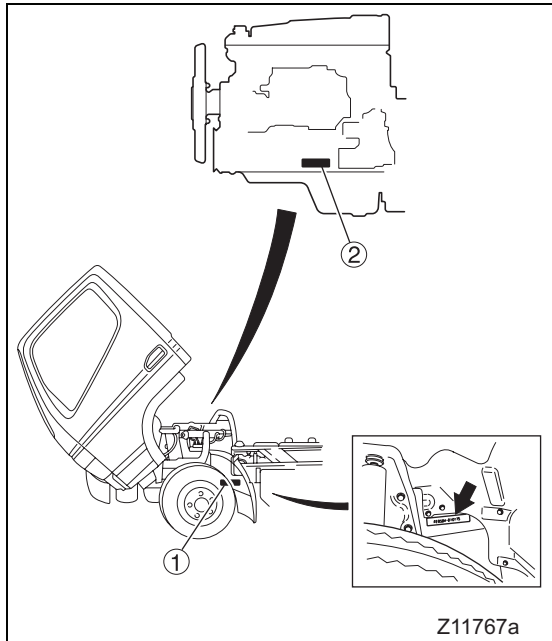
CONTENTS

1. About your vehicle	1-1
2. Warning labels	2-1
3. Vehicle access	3-1
4. Seat and steering wheel adjustments	4-1
5. Switches and controls	5-1
6. Instrument cluster gauges and lights	6-1
7. Starting and driving	7-1
8. Heating and air conditioning	8-1
9. Interior equipment and accessories	9-1
10. In cold weather	10-1
11. Pretrip inspection and maintenance	11-1
12. In an emergency	12-1
13. Service data	13-1
14. Maintenance schedule	14-1
15. Alphabetical index	15-1

Each chapter has a table of contents on its first page.

1. About your vehicle

Chassis and engine numbers 1-2
Power line label 1-2
Vehicle identification number (VIN) 1-3
Maintenance 1-4
Fuel 1-5
Reporting safety defects 1-8
Obtaining service 1-8



Chassis and engine numbers

1 Chassis number

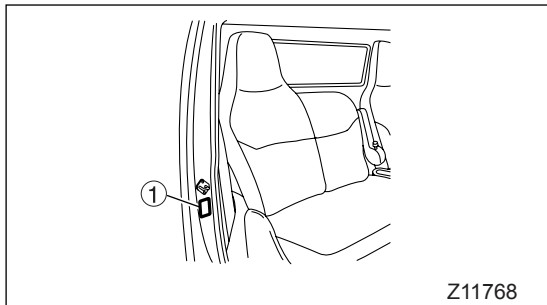
The chassis number ① is indicated on the left frame, near the left front wheel.

Example: FE84DD - □□□□□□
└──────────┘ Chassis number
└──────────┘ Vehicle model

2 Engine number

The engine number ② is indicated on the left side of the crankcase.

Example: 4M50 - □□□□□□
└──────────┘ Engine number
└──────────┘ Engine model



Power line label

The power line label ① is located on the passenger's B-pillar door post. It gives the vehicle model, chassis number, and information about the components of the powertrain: engine, transmission, and axle.

Maintenance

Regular maintenance will improve the performance of your vehicle and extend its service life. It is recommended that you make a habit of performing the following inspections.


In this manual, you will find simple maintenance checks and procedures that can be carried out by the owner. If you have difficulty, or your vehicle needs work that is not described in this manual, please contact an authorized Sterling service facility.

1 Engine run-in period

To avoid overburdening a new engine, limit engine speed to 1800 revolutions per minute (rpm) for the first 600 miles (1000 km).

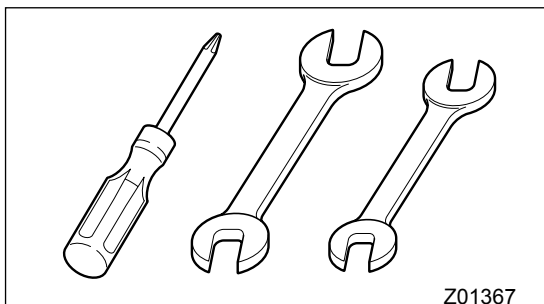
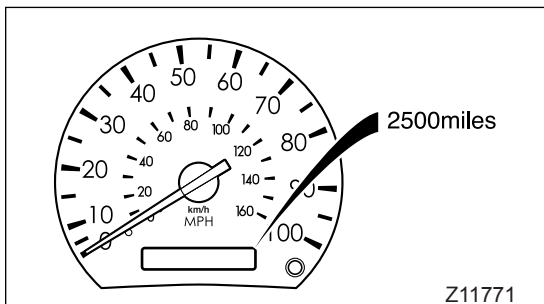
After this initial run-in period, gradually increase engine speed, starting with the lower gears.

2 Pretrip inspection

Inspect your vehicle at the start of each working day. This will ensure continued safe and comfortable operation. ⇒  P. 11-7


3 Initial maintenance

After you have driven the first 4,000 km (2,500 miles), your vehicle requires a special inspection and adjustments to compensate for the initial settlement of various parts.



4 Maintenance program

Recurring maintenance lengthens the vehicle's service life and can help prevent accidents. Recurring maintenance can be based on either distance traveled (odometer reading), or length of service (hour-meter reading).

Maintenance intervals for each recurring item are shown in the maintenance schedule. Please follow the maintenance schedule. ⇒  P. 14-2

Fuel

Use only diesel fuel conforming to the following recommendations, without any additives, for diesel engines installed in the Sterling 360.

1 Diesel fuel properties

For optimum fuel economy and performance, adhere to the following recommendations.

Use condition	Recommendation
Normal operation at temperatures above 10°F (–12°C)	ASTM D-975 Grade Ultra Low Sulfur Grade 2-D*
Operation at temperatures below 10°F (–12°C), or long-hour no-load operation.	ASTM D-975 Grade Ultra Low Sulfur Grade 1-D*

NOTE:

* ASTM is an acronym for the American Society for Testing and Materials which recommends fuel containing 0.0015% – basis 15 ppm sulfur or less sulfur content.

Sulfur content exceeding 0.0015% – basis 15 ppm sulfur deteriorates the performance of the emission control device.

To meet precise fuel requirements, obtain cooperation from a reputable supplier of diesel fuel. The fuel supplier and the vehicle operator are both responsible for keeping the fuel clean.

2 Ultra low sulfur diesel

Use only a ultra low sulfur diesel fuel (with a sulfur content of 15 ppm or lower) for refueling your engine. Otherwise, the catalyst inside the diesel particulate filter (DPF) will not work effectively and the DPF's performance of removing small particles (particulate matter or PM) in exhaust gases will be degraded. Furthermore, your truck will not meet emission regulations if you replenish it with a non-approved fuel.

3 Danger of fire and explosion resulting from fuel mixtures

Fuel containing 5% gasoline has a flash point as low as 32°F (0°C), which can lead to a fire or explosion while the engine is running.

DANGER 

NEVER MIX DIESEL FUEL WITH GASOLINE, GASOHOL OR ALCOHOL.

USE OF FUEL MIXED WITH ONE OR MORE OF THESE COULD LEAD TO A FIRE OR EXPLOSION INVOLVING SERIOUS INJURY, DEATH OR PROPERTY DAMAGE. IF YOU ACCIDENTALLY USE GASOLINE OR ALCOHOL WHEN REFUELING THE VEHICLE, REMOVE ALL OF IT FROM THE FUEL SYSTEM.

4 Adverse effects of fuel mixtures

Using diesel fuel mixed with gasoline, alcohol, or both, has the following adverse effects on the engine:

- Excessive wear, damage, and failure of fuel system parts, as a result of lower fuel viscosity.
- Difficulty in starting the engine, as a result of reduced cetane number.

CAUTION 

- The lower the cetane number, the more likely internal engine damage will occur.
- Do not add antifreeze agents or other substances to the fuel. They could damage the engine's fuel injection system.
- Be sure to clean the fuel tank cap and breather regularly. If they become so dirty that the breather gets blocked, the fuel tank may suffer damage and the fuel injection system may fail.


5 Refueling**WARNING** 

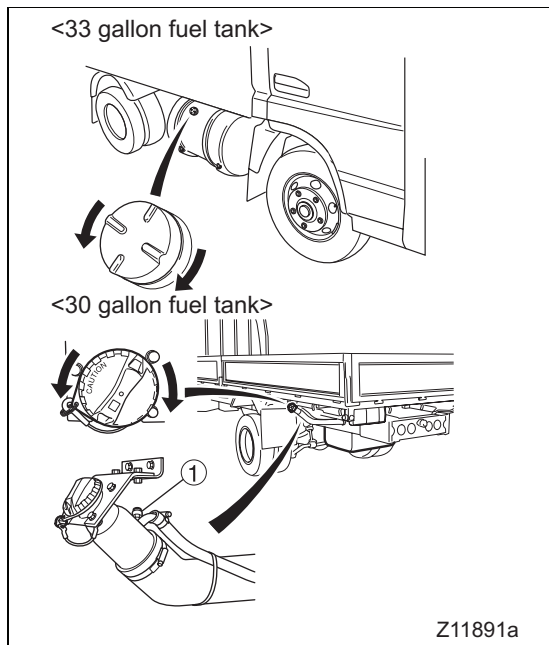
- Do not refuel with the engine running. Shut down the engine before fueling.
- Diesel fuel is combustible. Wipe up any spilled fuel. Do not smoke while refueling.
- If you inadvertently put gasoline in the fuel tank, pump it all out. Do not run the engine with gasoline in the tank.

Any of these practices can cause a fire or explosion, which could result in burn injuries or loss of life.

NOTE:

If the vehicle runs out of fuel and air enters the fuel lines, bleed the fuel system before starting the engine.

⇒  P. 12-23



- **33-gallon fuel tank**

This fuel tank is on the left-hand side of the vehicle. To open the filler cap, slowly turn it counterclockwise. To close the cap, turn it clockwise. Be sure the cap is fully closed.

Fuel tank capacity
33.0 gallons (125 liters)

- **30-gallon fuel tank **

This optional fuel tank is at the rear of the vehicle. To open the filler cap, slowly turn it counterclockwise. To close the cap, turn it clockwise until you hear a click.

Fuel tank capacity
29.8 gallons (113 liters)

WARNING 

- When filling the fuel tank using a gun-type fuel pump, do not continue pumping after the pump automatically stops. (The tank is full at this point.)
- When filling the fuel tank using any other method, stop as soon as the fuel level becomes visible through the fill opening. If the fuel level reaches the bottom of the opening, fuel may leak through the check valve ① when the vehicle starts and stops. If fuel leaks, carefully wipe it all up.
- If the pointer of the fuel level gauge is above the "F" mark, do not add any more fuel.

Overfilling the fuel tank can cause a fire, which could result in burn injuries and loss of life.

Reporting safety defects

If you believe that your vehicle has a defect that could cause a crash or could cause injury or death, you should immediately inform the National Highway Traffic Safety Administration (NHTSA) in addition to notifying Sterling Truck Corporation.

If NHTSA receives similar complaints, it may open an investigation, and if it finds that a safety defect exists in a group of vehicles, it may order a recall and remedy campaign. However, NHTSA cannot become involved in individual problems between you, your dealer, or Sterling Truck Corporation.

To contact NHTSA, you may either call the Auto Safety Hotline toll-free at 1-888-327-4236 (TTY: 1-800-424-9153); go to www.safercar.gov; or write to: Administrator, NHTSA, 1200 New Jersey Avenue, SE, Washington, DC 20590.

You can also obtain other information about motor vehicle safety from www.safercar.gov.

Canadian customers who wish to report a safety-related defect to Transport Canada, Defect Investigations and Recalls, may telephone the toll-free hotline 1-800-333-0510, or contact Transport Canada by mail at: Transport Canada, ASFAD, Place de Ville Tower C, 330 Sparks Street, Ottawa, Ontario, Canada K1A 0N5.

For additional road safety information, please visit the Road Safety website at: www.tc.gc.ca/road-safety/menu.htm.

Obtaining service

Customer Assistance Center

Having trouble finding service? Call the Customer Assistance Center at **1-800-785-4357** or **1-800-STL-HELP**. Call night or day, weekdays or weekends, for dealer referral, vehicle information, or breakdown coordination. Our people are knowledgeable, professional, and committed to following through to help you keep your truck moving.

2. Warning labels

General information 2-2
Locations in cab 2-3
Locations outside cab 2-4

General information

- The caution and warning labels give important information. Be sure to read them before using the vehicle.
- If any label has become so damaged or dirty that it is difficult to read, please inform an authorized Sterling dealer. The warning and caution labels apply only to the vehicle itself. For vendor equipment mounted on the vehicle, please refer to the equipment manufacturer's manual.
- The locations of the caution and warning labels are shown in the following illustration. Samples of each label are supplied on this and the following pages.

Locations in cab

DPF indicator lamp

WARNING When the DPF indicator lamp illuminates intermittently, immediately follow the procedure described at the right.

DPF Cleaning Procedure (Approximately 10-20 minutes)

1. Stop the vehicle in a safe place and allow the engine to idle.
2. Place the transmission in neutral (N/T), or Park (A/T). And release the clutch pedal.
3. Apply the parking brake in accordance with proper procedure.
4. Push the DPF cleaning switch.
5. Remain stationary, with engine idle, until the DPF indicator lamp goes out.

Parking

WARNING Proper Parking Procedures

- After stopping and while keeping the brake pedal depressed: (1)apply the parking brake lever fully;(2)place the A/T range selector lever in the "P" position;and(3)release the brake pedal.
- Be sure to always fully apply the parking brake.
- When parking on an incline, always use wheel checks.

Fuel

WARNING Ultra Low Sulfur Diesel Fuel Only

Hydraulic brake booster <COE 50>

CAUTION (Brake system air bleeding)

Do not start or run engine until completing brake fluid replacement.

See shop manual for details.

WARNING

High Exhaust System Temperature

Exhaust gases and components are at extremely high temperatures. When parking the vehicle, keep away from people, or any flammable materials, vapors, or structures.

High exhaust system temperature

WARNING

TOWING:

BEFORE TOWING A DISABLED VEHICLE, DISCONNECT DRIVELINE OR PULL AXLE SHAFTS OR TOW WITH REAR WHEELS SUSPENDED.

Towing

Voltage

12V

DPF system

WARNING DPF system with regeneration control

1. Flashing of the DPF lamp () is normal and indicates that manual control of the DPF Cleaning Procedure is required to maintain proper operation of the DPF system. If the DPF indicator lamp flashes, follow the procedure below within 30 miles. If the lamp flashes rapidly, the procedure must be performed immediately to avoid damage to the DPF system. Failure to perform the procedure will require vehicle repair at an authorized MFA dealer. Perform the DPF Cleaning Procedure only in a well-ventilated area.
 - a. Stop the vehicle in a safe, well-ventilated area away from any flammable materials.
 - b. Begin the procedure with the engine running at idle speed.
 - c. Apply the parking brake in accordance with proper procedure. Place the transmission in Neutral (N/T), or Park (A/T). Release the accelerator pedal (and clutch pedal, if equipped). On PTO-equipped models, disengage the PTO.
 - d. Press the DPF switch until the DPF lamp () changes from intermittent to steady illumination while the engine is running. Engine speed will increase and the exhaust brake will engage as DPF cleaning begins.
 - e. When engine speed returns to idle and the DPF indicator lamp goes out, DPF cleaning is complete.
 - f. After DPF cleaning is complete normal vehicle operation is permitted.
 - g. The DPF Cleaning Procedure may be stopped by pressing the DPF switch again or by depressing the accelerator pedal (or clutch pedal, if equipped).
2. Primarily, DPF cleaning is automatically controlled, and manual control will not be necessary. During automatic DPF cleaning, engine speed and sound will change. This is routine operation and the vehicle should be driven normally. Please see the owner's manual for complete details.

Fuse

DIAGNOSES		UPPER 12V	
DIAGNOSIS	FUSE	DIAGNOSIS	FUSE
BACKLAMP	F1	WIPER MOTOR	F10
BACKLAMP	F2	WIPER MOTOR	F11
BACKLAMP	F3	WIPER MOTOR	F12
BACKLAMP	F4	WIPER MOTOR	F13
BACKLAMP	F5	WIPER MOTOR	F14
BACKLAMP	F6	WIPER MOTOR	F15
BACKLAMP	F7	WIPER MOTOR	F16
BACKLAMP	F8	WIPER MOTOR	F17
BACKLAMP	F9	WIPER MOTOR	F18
BACKLAMP	F10	WIPER MOTOR	F19
BACKLAMP	F11	WIPER MOTOR	F20
BACKLAMP	F12	WIPER MOTOR	F21
BACKLAMP	F13	WIPER MOTOR	F22
BACKLAMP	F14	WIPER MOTOR	F23
BACKLAMP	F15	WIPER MOTOR	F24
BACKLAMP	F16	WIPER MOTOR	F25
BACKLAMP	F17	WIPER MOTOR	F26
BACKLAMP	F18	WIPER MOTOR	F27
BACKLAMP	F19	WIPER MOTOR	F28
BACKLAMP	F20	WIPER MOTOR	F29
BACKLAMP	F21	WIPER MOTOR	F30
BACKLAMP	F22	WIPER MOTOR	F31
BACKLAMP	F23	WIPER MOTOR	F32
BACKLAMP	F24	WIPER MOTOR	F33
BACKLAMP	F25	WIPER MOTOR	F34
BACKLAMP	F26	WIPER MOTOR	F35
BACKLAMP	F27	WIPER MOTOR	F36
BACKLAMP	F28	WIPER MOTOR	F37
BACKLAMP	F29	WIPER MOTOR	F38
BACKLAMP	F30	WIPER MOTOR	F39
BACKLAMP	F31	WIPER MOTOR	F40
BACKLAMP	F32	WIPER MOTOR	F41
BACKLAMP	F33	WIPER MOTOR	F42
BACKLAMP	F34	WIPER MOTOR	F43
BACKLAMP	F35	WIPER MOTOR	F44
BACKLAMP	F36	WIPER MOTOR	F45
BACKLAMP	F37	WIPER MOTOR	F46
BACKLAMP	F38	WIPER MOTOR	F47
BACKLAMP	F39	WIPER MOTOR	F48
BACKLAMP	F40	WIPER MOTOR	F49
BACKLAMP	F41	WIPER MOTOR	F50
BACKLAMP	F42	WIPER MOTOR	F51
BACKLAMP	F43	WIPER MOTOR	F52
BACKLAMP	F44	WIPER MOTOR	F53
BACKLAMP	F45	WIPER MOTOR	F54
BACKLAMP	F46	WIPER MOTOR	F55
BACKLAMP	F47	WIPER MOTOR	F56
BACKLAMP	F48	WIPER MOTOR	F57
BACKLAMP	F49	WIPER MOTOR	F58
BACKLAMP	F50	WIPER MOTOR	F59
BACKLAMP	F51	WIPER MOTOR	F60
BACKLAMP	F52	WIPER MOTOR	F61
BACKLAMP	F53	WIPER MOTOR	F62
BACKLAMP	F54	WIPER MOTOR	F63
BACKLAMP	F55	WIPER MOTOR	F64
BACKLAMP	F56	WIPER MOTOR	F65
BACKLAMP	F57	WIPER MOTOR	F66
BACKLAMP	F58	WIPER MOTOR	F67
BACKLAMP	F59	WIPER MOTOR	F68
BACKLAMP	F60	WIPER MOTOR	F69
BACKLAMP	F61	WIPER MOTOR	F70
BACKLAMP	F62	WIPER MOTOR	F71
BACKLAMP	F63	WIPER MOTOR	F72
BACKLAMP	F64	WIPER MOTOR	F73
BACKLAMP	F65	WIPER MOTOR	F74
BACKLAMP	F66	WIPER MOTOR	F75
BACKLAMP	F67	WIPER MOTOR	F76
BACKLAMP	F68	WIPER MOTOR	F77
BACKLAMP	F69	WIPER MOTOR	F78
BACKLAMP	F70	WIPER MOTOR	F79
BACKLAMP	F71	WIPER MOTOR	F80
BACKLAMP	F72	WIPER MOTOR	F81
BACKLAMP	F73	WIPER MOTOR	F82
BACKLAMP	F74	WIPER MOTOR	F83
BACKLAMP	F75	WIPER MOTOR	F84
BACKLAMP	F76	WIPER MOTOR	F85
BACKLAMP	F77	WIPER MOTOR	F86
BACKLAMP	F78	WIPER MOTOR	F87
BACKLAMP	F79	WIPER MOTOR	F88
BACKLAMP	F80	WIPER MOTOR	F89
BACKLAMP	F81	WIPER MOTOR	F90
BACKLAMP	F82	WIPER MOTOR	F91
BACKLAMP	F83	WIPER MOTOR	F92
BACKLAMP	F84	WIPER MOTOR	F93
BACKLAMP	F85	WIPER MOTOR	F94
BACKLAMP	F86	WIPER MOTOR	F95
BACKLAMP	F87	WIPER MOTOR	F96
BACKLAMP	F88	WIPER MOTOR	F97
BACKLAMP	F89	WIPER MOTOR	F98
BACKLAMP	F90	WIPER MOTOR	F99
BACKLAMP	F91	WIPER MOTOR	F100

WARNING TO AVOID FIRE HAZARD OR DEFECT OF DEVICES, ONLY USE FUSES OF SPECIFIED CURRENT.

113-liter fuel tank (OPT)

WARNING CAUTION: DURING FUELING

- Observe the fuel filler opening while fueling
- Do not over-fill. Spilled fuel is a fire hazard.

Limited slip differential (OPT)

CAUTION FOR VEHICLE WITH LIMITED SLIP DIFFERENTIAL

1. NEVER ROTATE THE WHEEL WITH ONLY ONE REAR WHEEL JACKED UP.
2. USE ONLY SPECIFIED L.S.D. OIL.

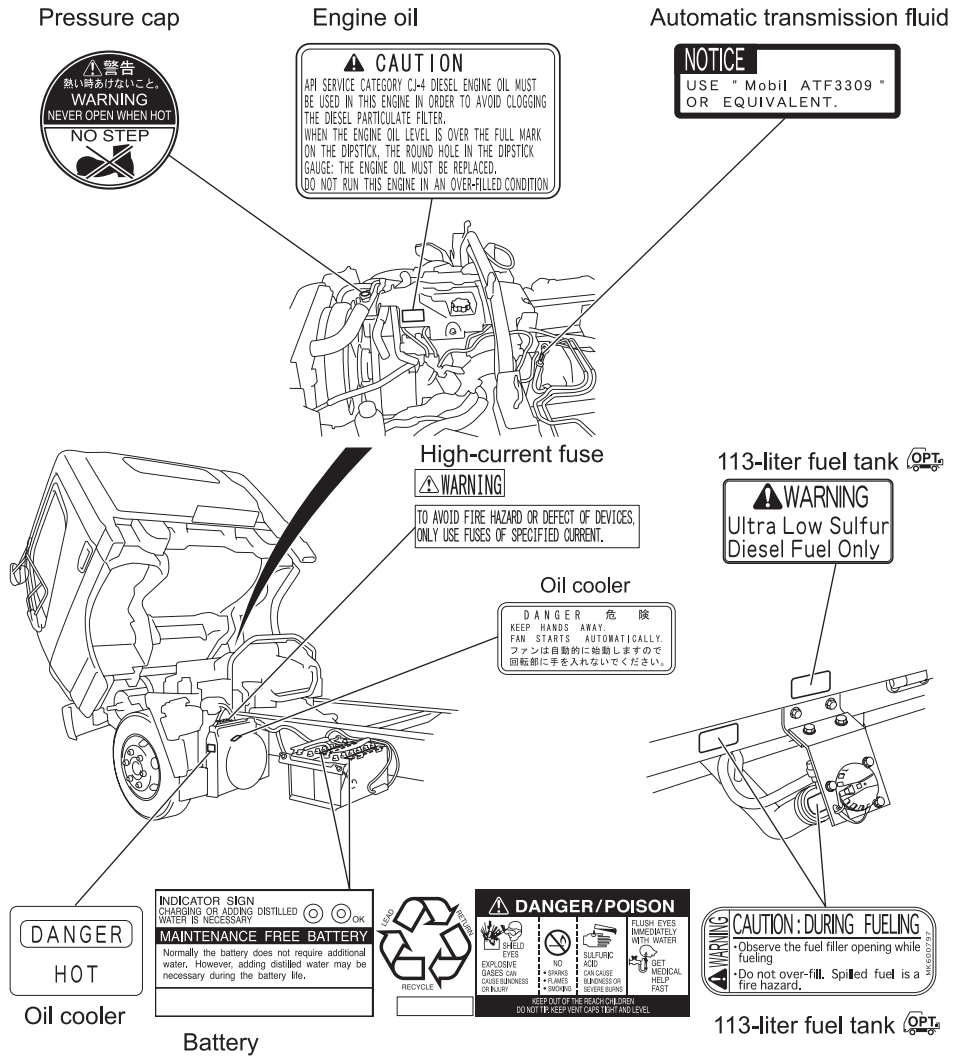
Hydraulic brake booster <COE 50>

CAUTION (Hydraulic Brake Booster)

- The brake system has a power assisting device that utilizes the hydraulic pressure generated by the power steering pump to boost the brake control pressure.
- With the engine stopped, depress the brake pedal and listen to a sound to make sure that the auxiliary electric pump for brake system power assistance is activated.

See owner's manual for details.

Locations outside cab



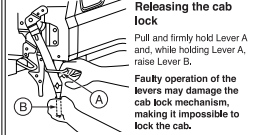
Cab tilt function

WARNING

When tilting and lowering the cab, strictly follow the instructions given below.

Releasing the cab lock
 Pull and firmly hold Lever A and, while holding Lever A, raise Lever B.

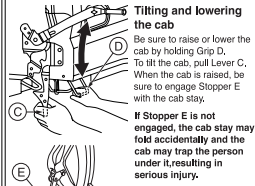
Faulty operation of the levers may damage the cab lock mechanism, making it impossible to lock the cab.



Tilting and lowering the cab
 Be sure to raise or lower the cab by holding Grip D. To lift the cab, pull Lever C. When the cab is raised, be sure to engage Stopper E with the cab stay.

If Stopper E is not engaged, the cab stay may fold accidentally and the cab may trap the person under it, resulting in serious injury.

Never raise or lower the cab by holding Lever B or C. This may damage the cab lock mechanism, making it impossible to lock the cab.

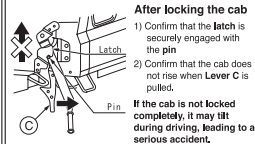


Refer to the owner's handbook for details of the operating procedures.

After locking the cab

- 1) Confirm that the latch is securely engaged with the pin
- 2) Confirm that the cab does not rise when Lever C is pulled.

If the cab is not locked completely, it may tilt during driving, leading to a serious accident.

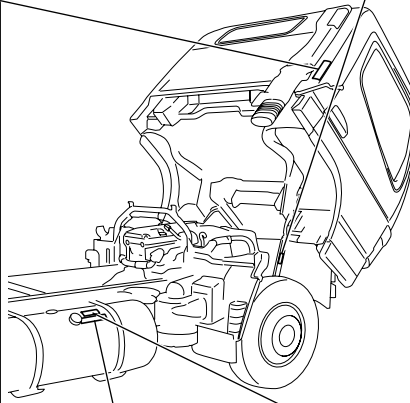


MKG-47802

Cab tilt function

WARNING

TO ENSURE SAFETY, BE SURE TO FIT THE SAFETY SPRING BETWEEN THE CAB STAY AND THE LEVER.

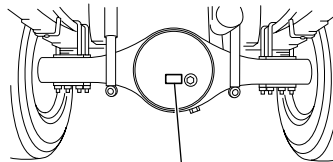


DIESEL FUEL ONLY


125-liter fuel tank

WARNING
 Ultra Low Sulfur Diesel Fuel Only

125-liter fuel tank



MAKE USE OF LIMITED SLIP DIFFERENTIAL OIL

Limited slip differential 

Z17822

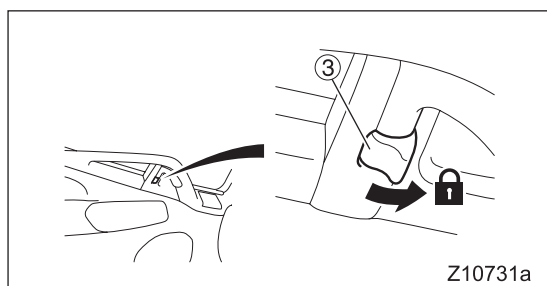
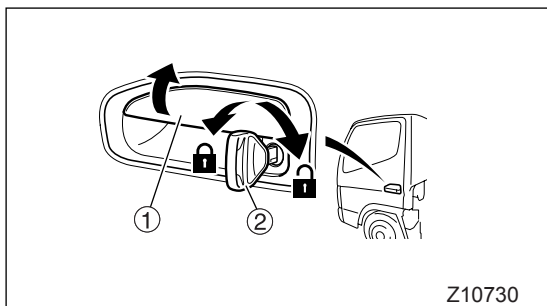
3. Vehicle access

Doors	3-2
Master door locks	3-3
Keyless entry	3-4
Entering and exiting the vehicle	3-9
Door window	3-10

Doors

WARNING

- To prevent injuries, before opening either door, check for vehicles and pedestrians approaching from behind.
- Driving with a door ajar can cause an injury. Make sure the doors are completely closed before starting the vehicle.
- Exercise caution when opening a door in strong wind. Otherwise, the wind could catch the door and suddenly blow it open, causing a personal injury.
- Exercise caution when opening a door on a downward slope. Otherwise, the inclination of the vehicle could cause the door to suddenly fall open, causing a personal injury.
- Never leave a child alone in the cab. A child left in the cab could inadvertently operate the controls, causing an accident or injury. Be particularly careful in hot weather, because a child left in the cab could suffer heatstroke.

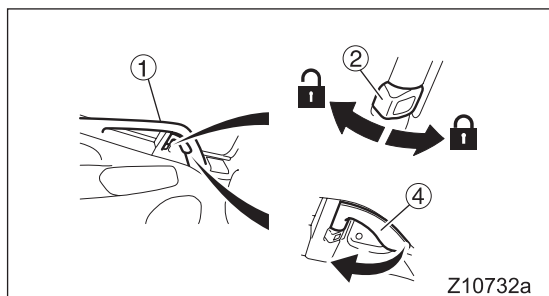


1 From the outside

- To open, pull the outer handle ① toward you.
- Use the ignition key ② to lock or unlock the door.
- It is possible to lock each door without using the ignition key. On the driver's door or passenger's door, push the lock button ③ forward, then close the door as you pull out on the exterior door handle.

NOTE:

- If you lock the driver's door using the ignition key or lock button, the passenger's door locks automatically. However, if you unlock the driver's door using the ignition key or lock button, the passenger's door remains locked. Only the driver's door is unlocked.
- When you leave your vehicle, be sure to remove the ignition key from the ignition switch to prevent theft.
- Be careful not to lock the doors with the ignition key inside the vehicle.

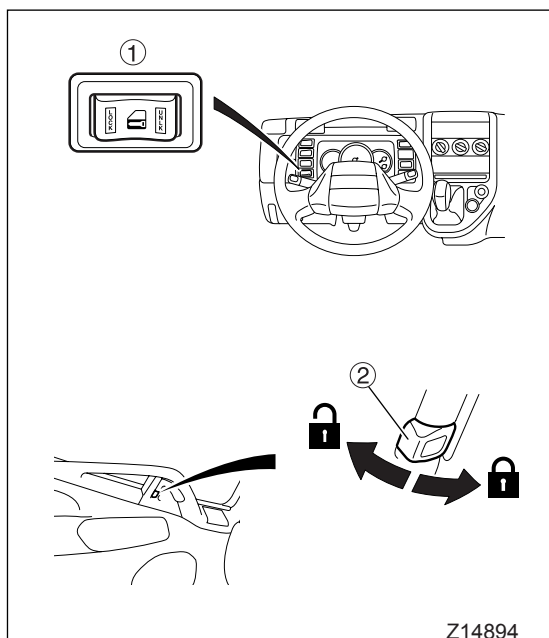


2 From the inside

- To close, use the door grab handle ①. Close the door completely.
- To lock the driver's door or passenger's door, push the lock button ② forward.
- To unlock and open the driver's door or passenger's door, push the lock button toward the rear of the vehicle, and then pull the interior door handle ④.

CAUTION

Use the grab handle to close the door. Closing the door in any other way could damage the door mechanism.



Master door locks

- When the "LOCK" side of the switch ① is pressed, both doors are locked. When the "UNLK" side of the switch is pressed, both doors are unlocked.
- When the lock button ② on the driver's door is pushed forward, the passenger's door is also automatically locked. If the lock button on either door is subsequently pushed rearward, only that door is unlocked.
- When the driver's door is locked from the outside using the ignition key, the passenger's door is automatically locked at the same time. If the ignition key is subsequently used to unlock either door, the other door remains locked.