

# ELECTRICAL CIRCUIT SCHEMATICS

## FORD C346 MY2011

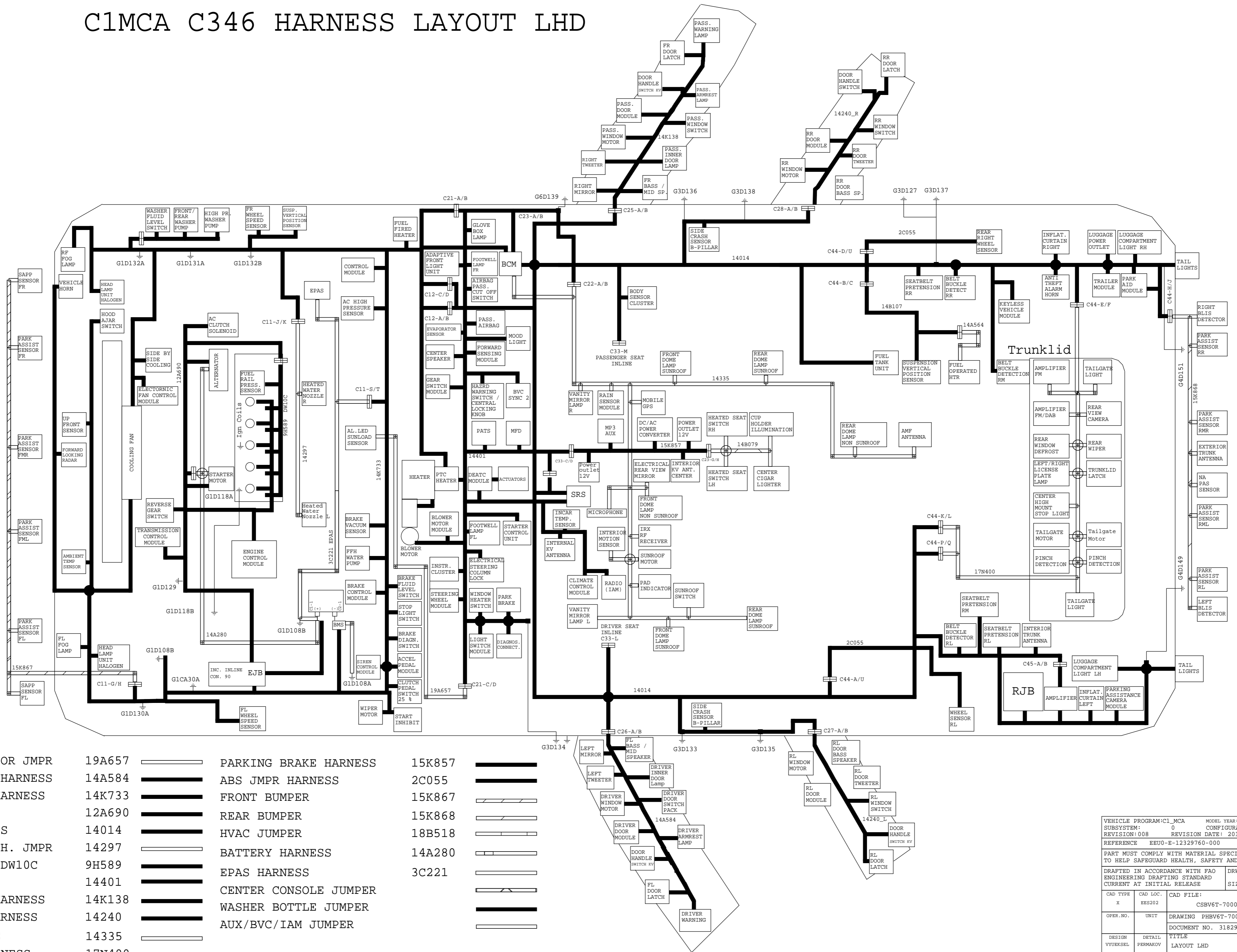
### INDEX PAGE

PAGE#	NAME	SUBSYSTEM	PAGE#	NAME	SUBSYSTEM
1	CSBV6T-70001-AC	INDEX PAGE	73	PHBV6T-70340-AC	C346 POWER SEAT MANEUVERING
2	CSBV6T-70002-AC	LAYOUT LHD PAGE	74	PHBV6T-70366-AC	C346 VOLTAGE OUTLET
3	PHBV6T-70001-AC	C346 POWER DISTRIBUTION	75	PHBV6T-70331-BC	C346 REAR VIEW MIRROR AUTODIMMING
4	PHBV6T-70002-AC	C346 BCM SUPPLY	76	PHBV6T-70422-AC	C346 DOUBLE/CENTRAL LOCKING (FRONT)
5	PHBV6T-70010-AC	C346 BCM	77	PHBV6T-70422-CC	C346 CENTRAL LOCKING (REAR1)
6	PHBV6T-70010-DC	C346 ELECTRICAL DISTRIBUTION PFB	78	PHBV6T-70422-DC	C346 CENTRAL LOCKING W/O FRONT DCU
7	PHBV6T-70010-BC	C346 ELECTRICAL DISTRIBUTION EJB	79	PHBV6T-70422-BC	C346 CENTRAL LOCKING W/O REAR DCU
8	PHBV6T-70010-CC	C346 ELECTRICAL DISTRIBUTION RJB	80	PHBV6T-70411-AC	C346 KEYLESS UNLOCKING
9	PHBV6T-70012-AC	C346 GROUNDING SHEET1	81	PHBV6T-70404-AC	C346 ALARM/THEFT PROTECTION
10	PHBV6T-70012-BC	C346 GROUNDING SHEET2	82	PHBV6T-70441-AC	C346 LOW AUDIO
11	PHBV6T-70012-CC	C346 GROUNDING SHEET3	83	PHBV6T-70441-DC	C346 HIGH AUDIO WITH BVC
12	PHBV6T-70012-DC	C346 GROUNDING SHEET4	84	PHBV6T-70441-CC	C346 HIGH AUDIO W/ SYNC GEN II
13	PHBV6T-70016-AC	C346 DIAGNOSTICS	85	PHBV6T-70441-BC	C346 SPEAKERS W/O EXTERNAL AMPLIFIER EU
14	PHBV6T-70016-BC	C346 MULTIMEDIA CAN	86	PHBV6T-70441-EC	C346 SPEAKERS W/O EXTERNAL AMPLIFIER NA
15	PHBV6T-70016-CC	C346 DATA TRANSFER MS-CAN	87	PHBV6T-70441-FC	C346 SPEAKERS W/ EXTERNAL AMPLIFIER NA
16	PHBV6T-70016-EC	C346 DATA TRANSFER FLOOR MS-CAN	88	PHBV6T-70469-AC	C346 ACCESSORIES PREPARATION
17	PHBV6T-70016-IC	C346 DATA TRANSFER HS-CAN	89	PHBV6T-70481-AC	C346 PARK ASSIST SYSTEM
18	PHBV6T-70016-JC	C346 DATA TRANSFER IP-ROOF HS-CAN	90	PHBV6T-70481-BC	C346 PARK ASSIST CAMERA
19	PHBV6T-70016-HC	C346 DATA TRANSFER LIN	91	PHBV6T-70482-AC	C346 BLIND SPOT DETECTION
20	PHBV6T-70013-AC	C346 START / CRANKING	92	PHBV6T-70482-DC	C346 CITY SAFE & DRIVER ASSIST
21	PHBV6T-70013-BC	C346 START / CRANKING KV CONTROL	93	PHBV6T-70487-AC	C346 COLLISION AVOIDANCE DRIVER SUPPORT ADAPTIVE CRUISE CONTROL
22	PHBV6T-70022-AC	C346 SMART EL POWER GENERATING	94	PHBV6T-70491-BC	C346 CONNECTOR FACEVIEWS 12A690 (SHEET1)
23	PHBV6T-70021-AC	C346 STOP/START FUNCTION	95	PHBV6T-70491-CC	C346 CONNECTOR FACEVIEWS 12A690 (SHEET2)
24	PHBV6T-70174-AC	C346 EPAS	96	PHBV6T-70491-DC	C346 CONNECTOR FACEVIEWS 12A690 (SHEET3)
25	PHBV6T-70034-AC	C346 ENGINE MANAGEMENT SIGMA (SHEET 1)	97	PHBV6T-70491-EC	C346 CONNECTOR FACEVIEWS 12A690 (SHEET4)
26	PHBV6T-70034-BC	C346 ENGINE MANAGEMENT SIGMA TIVCT (SHEET 2)	98	PHBV6T-70491-FC	C346 CONNECTOR FACEVIEWS 12A690 (SHEET5)
27	PHBV6T-70034-DC	C346 ENGINE MANAGEMENT DW10C (SHEET 1)	99	PHBV6T-70491-GC	C346 CONNECTOR FACEVIEWS 12C508 (SHEET1)
28	PHBV6T-70034-EC	C346 ENGINE MANAGEMENT DW10C (SHEET 2)	100	PHBV6T-70491-IC	C346 CONNECTOR FACEVIEWS 12C508 (SHEET2)
29	PHBV6T-70034-FC	C346 ENGINE MANAGEMENT DV6C (SHEET 1)	101	PHBV6T-70491-JC	C346 CONNECTOR FACEVIEWS 14014 (SHEET1)
30	PHBV6T-70034-GC	C346 ENGINE MANAGEMENT DV6C (SHEET 2)	102	PHBV6T-70491-KC	C346 CONNECTOR FACEVIEWS 14014 (SHEET2)
31	PHBV6T-70034-HC	C346 ENGINE MANAGEMENT GDI/GTDI (SHEET 1)	103	PHBV6T-70491-LC	C346 CONNECTOR FACEVIEWS 14014 (SHEET3)
32	PHBV6T-70034-JC	C346 ENGINE MANAGEMENT 1.6L GTDI (SHEET 2)	104	PHBV6T-70491-MC	C346 CONNECTOR FACEVIEWS 14014 (SHEET4)
33	PHBV6T-70034-CC	C346 ENGINE MANAGEMENT 2.0L GDI (SHEET 2)	105	PHBV6T-70491-NC	C346 CONNECTOR FACEVIEWS 14180
34	PHBV6T-70041-CC	C346 DPS6 AUTOMATIC GEARSHIFTING TIVCT	106	PHBV6T-70491-PC	C346 CONNECTOR FACEVIEWS 14240
35	PHBV6T-70041-AC	C346 MPS6 AUTOMATIC GEARSHIFTING	107	PHBV6T-70491-QC	C346 CONNECTOR FACEVIEWS 14297
36	PHBV6T-70041-BC	C346 DPS6 AUTOMATIC GEARSHIFTING 2.0L GDI	108	PHBV6T-70491-RC	C346 CONNECTOR FACEVIEWS 14301
37	PHBV6T-70060-AC	C346 EXTERIOR LIGHTING HALOGEN + FRONT FOG	109	PHBV6T-70491-SC	C346 CONNECTOR FACEVIEWS 14324
38	PHBV6T-70060-EC	C346 EXTERIOR LIGHTING HALOGEN (MERCURY) + FRONT FOG	110	PHBV6T-70491-TC	C346 CONNECTOR FACEVIEWS 14335
39	PHBV6T-70060-BC	C346 XENON (HID) + AUTO LEVELLING + STATIC BENDING + FOG	111	PHBV6T-70491-UC	C346 CONNECTOR FACEVIEWS 14401 (SHEET1)
40	PHBV6T-70060-DC	C346 LIGHT SIGNALLING + PUDDLE LIGHT	112	PHBV6T-70491-VC	C346 CONNECTOR FACEVIEWS 14401 (SHEET2)
41	PHBV6T-70100-AC	C346 INTERIOR ILLUMINATION	113	PHBV6T-70491-WC	C346 CONNECTOR FACEVIEWS 14401 (SHEET3)
42	PHBV6T-70100-BC	C346 INTERIOR ROOF ILLUMINATION (DOME LAMPS)	114	PHBV6T-70491-XC	C346 CONNECTOR FACEVIEWS 14401 (SHEET4)
43	PHBV6T-70120-AC	C346 INSTRUMENT CONTROL SWITCH ILLUMINATION	115	PHBV6T-70491-YC	C346 CONNECTOR FACEVIEWS 14A107
44	PHBV6T-70060-CC	C346 REAR + REVERSING + STOP LIGHT (4DOORS)	116	PHBV6T-70491-ZC	C346 CONNECTOR FACEVIEWS 14A280
45	PHBV6T-70060-FC	C346 REAR + REVERSING + STOP LIGHT (WAGON)	117	PHBV6T-70492-AC	C346 CONNECTOR FACEVIEWS 14A584
46	PHBV6T-70060-GC	C346 REAR+REVERSING + STOP LIGHT (5DOORS)	118	PHBV6T-70492-BC	C346 CONNECTOR FACEVIEWS 14B564
47	PHBV6T-70133-AC	C346 HEADLAMP + WINDSCREEN AND REAR WINDOW CLEANING	119	PHBV6T-70492-CC	C346 CONNECTOR FACEVIEWS 14B723
48	PHBV6T-70131-AC	C346 WINDSCREEN AND REAR WINDOW HEATING	120	PHBV6T-70492-DC	C346 CONNECTOR FACEVIEWS 14D466
49	PHBV6T-70140-AC	C346 SOUND SIGNALING	121	PHBV6T-70492-EC	C346 CONNECTOR FACEVIEWS 14E073
50	PHBV6T-70331-CC	C346 AMBIENT LIGHTS MULTI-COLOR	122	PHBV6T-70492-FC	C346 CONNECTOR FACEVIEWS 14F302
51	PHBV6T-70331-DC	C346 AMBIENT LIGHTS SINGLE-COLOR	123	PHBV6T-70492-GC	C346 CONNECTOR FACEVIEWS 14F303
52	PHBV6T-70150-AC	C346 ADVANCED RESTRAINTS SYSTEM EU	124	PHBV6T-70492-HC	C346 CONNECTOR FACEVIEWS 14K138
53	PHBV6T-70150-BC	C346 ADVANCED RESTRAINTS SYSTEM NA	125	PHBV6T-70492-IC	C346 CONNECTOR FACEVIEWS 14K155
54	PHBV6T-70201-AC	C346 STEERING WHEEL MODULE	126	PHBV6T-70492-JC	C346 CONNECTOR FACEVIEWS 14K733 (SHEET1)
55	PHBV6T-70170-AC	C346 ESP	127	PHBV6T-70492-KC	C346 CONNECTOR FACEVIEWS 14K733 (SHEET2)
56	PHBV6T-70170-BC	C346 ABS	128	PHBV6T-70492-MC	C346 CONNECTOR FACEVIEWS 15K857
57	PHBV6T-70492-YC	C346 CONNECTOR FACEVIEWS FPN NOT FOUND IN THE LIBRARY	129	PHBV6T-70492-NC	C346 CONNECTOR FACEVIEWS 15K867
58	PHBV6T-70210-AC	C346 DRIVER INFORMATION	130	PHBV6T-70492-OC	C346 CONNECTOR FACEVIEWS 15K868
59	PHBV6T-70296-AC	C346 HEATER ONLY (NO AC)	131	PHBV6T-70492-PC	C346 CONNECTOR FACEVIEWS 17N400
60	PHBV6T-70300-AC	C346 MANUAL A/C	132	PHBV6T-70492-QC	C346 CONNECTOR FACEVIEWS 18D273
61	PHBV6T-70302-AC	C346 DUAL ELECTRONIC AUTOMATIC TEMPERATURE CONTROL (DEATH) (DEATH)	133	PHBV6T-70492-RC	C346 CONNECTOR FACEVIEWS 19A657
62	PHBV6T-70308-AC	C346 SUPPLEMENTARY PTC HEATER	134	PHBV6T-70492-SC	C346 CONNECTOR FACEVIEWS 2C055
63	PHBV6T-70308-BC	C346 FUEL OPERATED HEATER	135	PHBV6T-70492-TC	C346 CONNECTOR FACEVIEWS 3C221
64	PHBV6T-70346-AC	C346 FRONT SEAT HEATING	136	PHBV6T-70492-UC	C346 CONNECTOR FACEVIEWS 9A340
65	PHBV6T-70316-AC	C346 POWER WINDOW	137	PHBV6T-70492-VC	C346 CONNECTOR FACEVIEWS 9F666
66	PHBV6T-70316-BC	C346 2-WAY POWER WINDOWS W/O DCU	138	PHBV6T-70492-WC	C346 CONNECTOR FACEVIEWS F221050
67	PHBV6T-70316-CC	C346 4-WAY POWER WINDOWS W/O DCU	139	PHBV6T-70492-XC	C346 CONNECTOR FACEVIEWS F221095
68	PHBV6T-70333-AC	C346 EXTERIOR MIRRORS MANEUVERING + HEATED + FOLD			
69	PHBV6T-70333-BC	C346 EXTERIOR MIRRORS MANEUVERING W/O DCU (WITH 2-WAY HC SWITCHES)			
70	PHBV6T-70333-CC	C346 EXTERIOR MIRRORS MANEUVERING W/O DCU (WITH 4-WAY HC SWITCHES)			
71	PHBV6T-70317-AC	C346 POWER SUNROOF			
72	PHBV6T-70317-BC	C346 OPENABLE PANORAMA ROOF			

LTRS	REVISIONS		
ORIGINATOR	CHECKER	ENGR. APP	MATL. APP
EEUO-E-12256536-000		DATE: 2009-06-01	CAD: N
LEAR CORP.	SELREFAE	RHALLBER	
Created PHBV6T-70000-AB based on PHBV6T-70000-AA			
EEUO-E-12277649-000		DATE: 2009-09-01	CAD: N
LEAR CORP.	SELREFAE	RHALLBER	
Created PHBV6T-70000-AC based on PHBV6T-70000-AB			
EEUO-E-12329760-000		DATE: 2010-05-05	CAD: N
LEAR CORP.	VYUEKSEL	RHINRICHS	

VEHICLE PROGRAM: C1_MCA		MODEL YEAR: MY2011	VEHICLE: C346
SUBSYSTEM: 0	CONFIGURATION		
Revision: 008	REVISION DATE: 2010-05-05		
EEOU-E-12329760-000			
PART MUST COMPLY WITH MATERIAL SPECIFICATION WSS-M99P9999-A1 TO HELP SAFEGUARD HEALTH, SAFETY AND THE ENVIRONMENT.			
DRAFTED IN ACCORDANCE WITH FAO ENGINEERING DRAFTING STANDARD CURRENT AT INITIAL RELEASE		DRWG STATUS: OPEN	
CAD TYPE: X		CAD LOC: EES202	CAD FILE: CSBV6T-70001-AC
OPER. NO.		UNIT	Page No.
DESIGN VYUEKSEL		DETAIL PERMAKOV	TITLE INDEX PAGE
CHECKED		SAFETY	SHT 1 OF 139 RH SHOWN
SCALE: 1	START DATE	DIVISION: EESE/RVT	
		PLANT	

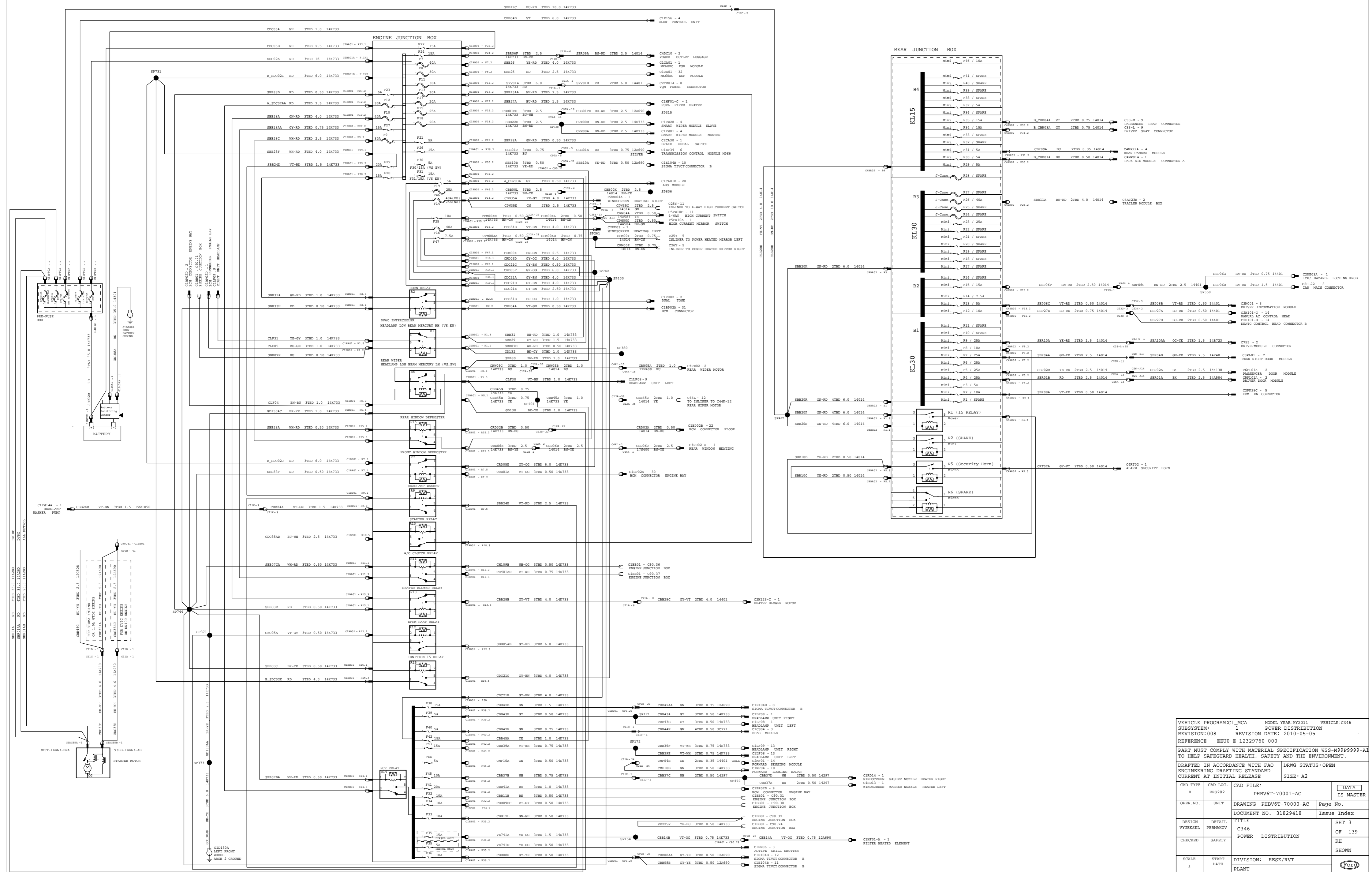
# C1MCA C346 HARNESS LAYOUT LHD



SUNLOAD SENSOR JMPR	19A657	PARKING BRAKE HARNESS	15K857
DRIVER DOOR HARNESS	14A584	ABS JMPR HARNESS	2C055
ENGINE BAY HARNESS	14K733	FRONT BUMPER	15K867
ENGINE DRESS	12A690	REAR BUMPER	15K868
FLOOR HARNESS	14014	HVAC JUMPER	18B518
HEATED WINDSH. JMPR	14297	BATTERY HARNESS	14A280
INJ. JUMPER DW10C	9H589	EPAS HARNESS	3C221
IP HARNESS	14401	CENTER CONSOLE JUMPER	
PASS. DOOR HARNESS	14K138	WASHER BOTTLE JUMPER	
REAR DOOR HARNESS	14240	AUX/BVC/IAM JUMPER	
ROOF HARNESS	14335		
TRUNKLID HARNESS	17N400		

VEHICLE PROGRAM: C1_MCA		MODEL YEAR: MY2011		VEHICLE: C346	
SUBSYSTEM: 0		CONFIGURATION			
REVISION: 008		REVISION DATE: 2010-05-05			
REFERENCE: EEU0-E-12329760-000					
PART MUST COMPLY WITH MATERIAL SPECIFICATION WSS-M99P9999-A1 TO HELP SAFEGUARD HEALTH, SAFETY AND THE ENVIRONMENT.					
DRAFTED IN ACCORDANCE WITH FAO ENGINEERING DRAFTING STANDARD			DRWG STATUS: OPEN		
CURRENT AT INITIAL RELEASE			SIZE: A2		
CAD TYPE	CAD LOC.	CAD FILE:	DATA IS MASTER		
X	ES202	CSBV6T-70002-AC			
OPER. NO.	UNIT	DRAWING	PHBV6T-70000-AC	Page No.	
		DOCUMENT NO.	31829418	Issue Index	
DESIGN	DETAIL	TITLE	LAYOUT LHD	SHT 2 OF 139	
VYVEKSEL	PERMAKOV	PAGE		RH SHOWN	
CHECKED	SAFETY				
SCALE	START DATE	DIVISION:	EESE/RVT		
1		PLANT		Ford	

# C346 POWER DISTRIBUTION



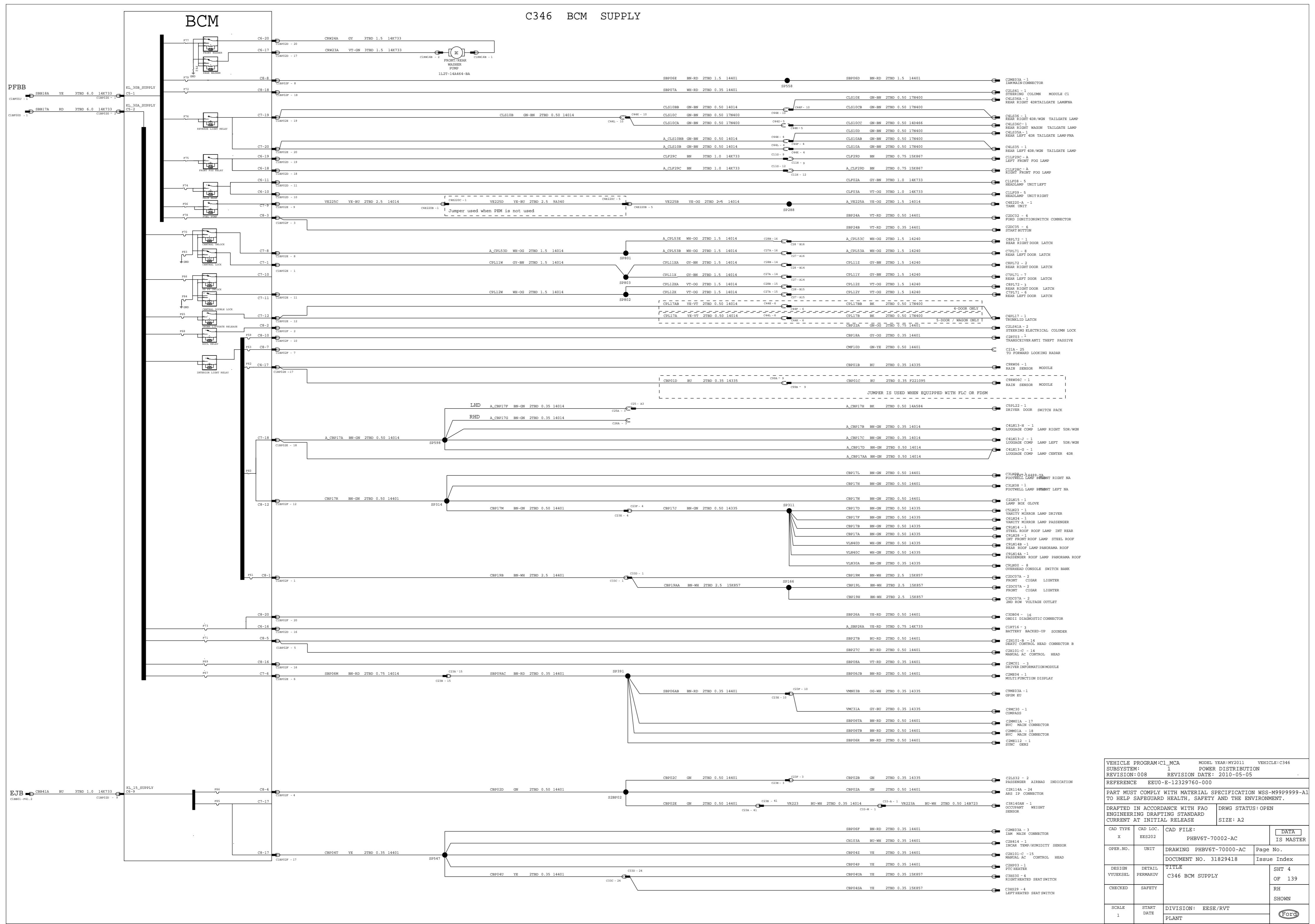
VEHICLE PROGRAM: C1_MCA		MODEL YEAR: MY2011	VEHICLE: C346
SUBSYSTEM: POWER DISTRIBUTION		REVISION DATE: 2010-05-05	
REVISION: 008		REFERENCE: EBU0-E-12329760-000	
PART MUST COMPLY WITH MATERIAL SPECIFICATION WSS-M99P9999-A3 TO HELP SAFEGUARD HEALTH, SAFETY AND THE ENVIRONMENT.			
DRAFTED IN ACCORDANCE WITH F40 ENGINEERING DRAFTING STANDARD		DRWG STATUS: OPEN	
CURRENT AT INITIAL RELEASE		SIZE: A2	
CAD TYPE	CAD LOC.	CAD FILE:	DATA IS MASTER
OPER. NO.	UNIT	DRAWING PHBV6T-70001-AC	Page No.
DESIGN VYUEKSEL	DETAIL	DOCUMENT NO. 31829418	Issue Index
CHECKED	SAFETY	TITLE C346 POWER DISTRIBUTION	SHT 3 OF 139
SCALE	START DATE	DIVISION: EESE/RVT	RH SHOWN
PLANT			

C346 BCM SUPPLY

BCM

PFBB

EJB



VEHICLE PROGRAM: C1_MCA		MODEL YEAR: MY2011	VEHICLE: C346
SUBSYSTEM: 1		POWER DISTRIBUTION	
REVISION: 008		REVISION DATE: 2010-05-05	
REFERENCE: EBU0-E-12329760-000			
PART MUST COMPLY WITH MATERIAL SPECIFICATION WSS-M99P9999-A1 TO HELP SAFEGUARD HEALTH, SAFETY AND THE ENVIRONMENT.			
DRAFTED IN ACCORDANCE WITH FAO ENGINEERING DRAFTING STANDARD		DRWG STATUS: OPEN	
CURRENT AT INITIAL RELEASE		SIZE: A2	
CAD TYPE	CAD LOC.	CAD FILE:	DATA IS MASTER
X	EES202	PHBV6T-70002-AC	
OPER. NO.	UNIT	DRAWING NO. 31829418	Page No.
DESIGN VYUEKSEL	DETAIL PERMAKOV	TITLE C346 BCM SUPPLY	SHT 4 OF 139
CHECKED	SAFETY		RH SHOWN
SCALE 1	START DATE	DIVISION: EESE/RVT	PLANT

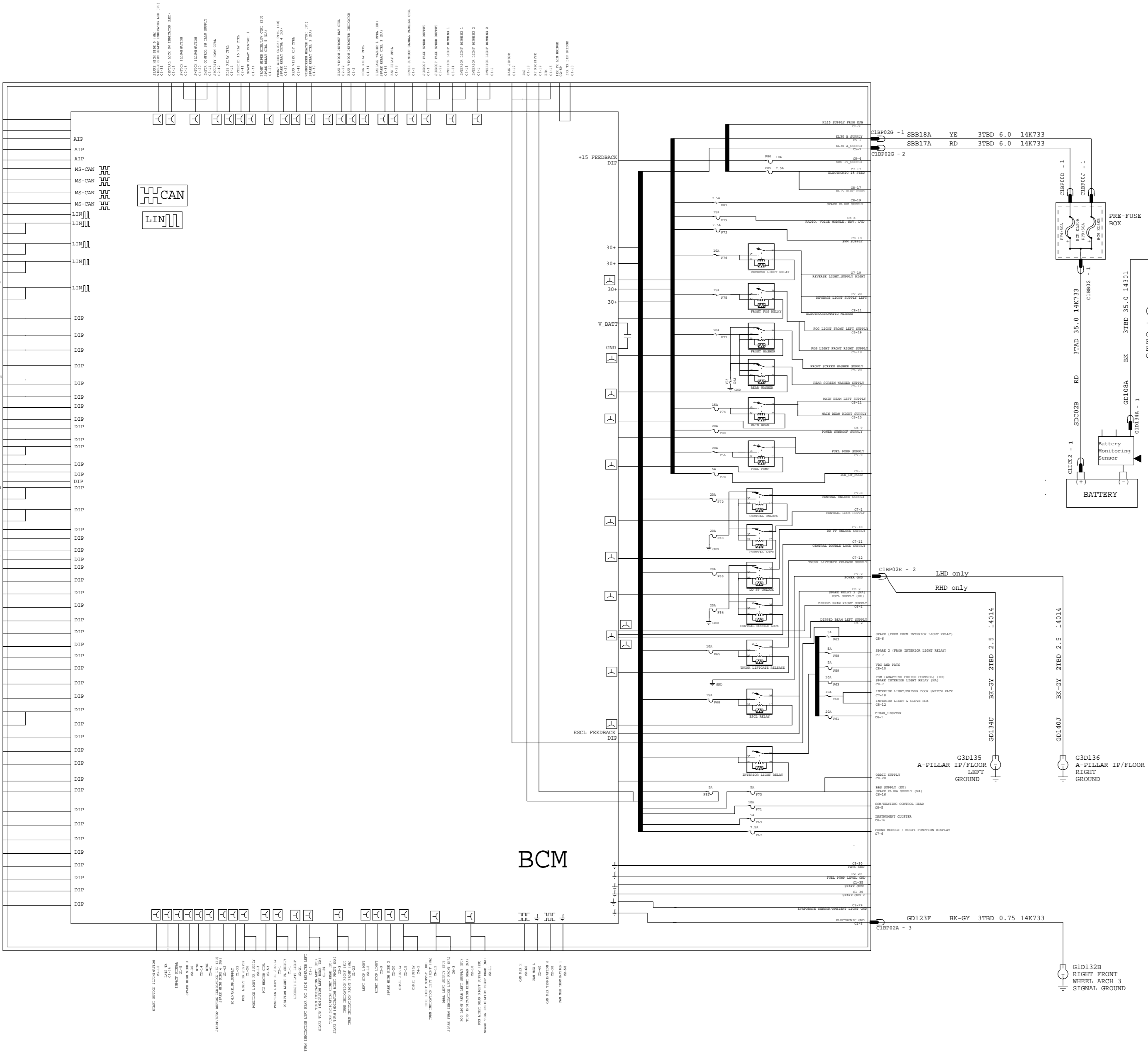
# C346 BCM

## FUSE ARRANGEMENT BCM

NO.	RATE (Amp)	FUNCTION	PART NO.
F56	20	FUEL PUMP RELAY SUPPLY	30872412
F57	-	SPARE	-
F58	-	SPARE	-
F59	5	VBC (VARIABLE BLOWER CONTROL)/ PATS	8676019
F60	10	INTERIOR LIGHT, DRIVER DOOR SWITCH PACK , GLOVE BOX	30872411
F61	20	CIGAR LIGHTER	30872412
F62	5	RAIN SENSOR MODULE/HUMIDITY SNR/ELECTROCHROMATIC REAR MIRROR	8676019
F63	10	FSM (ADAPTIVE CRUISE CONTROL)(EU)/SPARE INTERIOR LIGHT RELAY(NA)	30872411
F64	-	SPARE	-
F65	10	LIFTGATE RELEASE	30872411
F66	20	DD FF UNLOCK SUPPLY & DOUBLE LOCK	30872412
F67	7.5	PHONE MODULE/ MULTI FUNCTION DISPLAY	8676019
F68	15	ESCL(EU)/SPARE RELAY 2(NA)	30873044
F69	5	INSTRUMENT CLUSTER	8676019
F70	20	CENTRAL LOCK & UNLOCK SUPPLY	30872412
F71	10	HEATING CONTROL HEAD(MANUAL AC)/CLIMATE CONTROL MODULE(CCM)	30872411
F72	7.5	STEERING WHEEL MODULE (SWM(SAS))	8688644
F73	5	OBDDII ,SIREN CONTROL MODULE (BBS)	8676019
F74	15	MAIN BEAM RELAY SUPPLY	30873044
F75	15	FRONT FOG RELAY SUPPLY	30873044
F76	10	REVERSE LIGHT RELAY , REVERSE LIGHT SIGNAL TO ELEC. MIRROR SIGNAL	30872411
F77	20	SCREEN WASHER RELAYS SUPPLY	30872412
F78	5	IGNITION SWITCH	8676019
F79	15	VOICE MODULE,RADIO,NAVI DVD PLAYER,TOUCH SCREEN,CD CHARGER	30873044
F80	20	SUNROOF SUPPLY	30872412
F81	5	IMS(INTERIOR MOTION SENSOR),IRX	8676019
F82	20	GROUND FUSE (SCREEN WASHER)	30872412
F83	20	GROUND FUSE (CENTRAL LOCKING/UNLOCKING)	30872412
F84	20	GROUND FUSE (DD FF UNLOCK SUPPLY&DOUBLE LOCK)	30872412
F85	7.5	ELECTRONIC 15 FEEDS (PTC HEATER, ACC. PEDAL MODULE) (OBDDII CONNECTOR,PADS,FRONT SEAT HEATER SW,HEATING MOD. FOR MANUAL AC,AIR QUALITY SENSOR FOR 5A DUAL)	8688644
F86	10	SRS SUPPLY	30872411
F87	-	SPARE	8676019
F88	-	SPARE	-
F89	-	SPARE	-

## RELAY ARRANGEMENT BCM

NO.	TYPE	FUNCTION
R1	SOLDERED TYPE	REVERSE LIGHT RELAY
R2	SOLDERED TYPE	FRONT FOG RELAY
R3	SOLDERED TYPE	FRONT SCREEN WASHER RELAY
R4	SOLDERED TYPE	REAR SCREEN WASHER RELAY
R5	SOLDERED TYPE	MAIN BEAM RELAY
R6	SOLDERED TYPE	FUEL PUMP RELAY
R7	SOLDERED TYPE	CENTRAL UNLOCK SUPPLY
R8	SOLDERED TYPE	CENTRAL LOCK SUPPLY
R9	SOLDERED TYPE	DD FF UNLOCK SUPPLY
R10	SOLDERED TYPE	CENTRAL DOUBLE LOCK SUPPLY (EU) / SPARE RELAY 1 (NA)
R11	SOLDERED TYPE	LIFTGATE RELEASE / UNLOCK RELAY
R12	SOLDERED TYPE	ESCL(EU) / SPARE RELAY 2 (NA)
R13	SOLDERED TYPE	INT.L. (BATTERY SAVER / INTERIOR LIGHT RELAY)

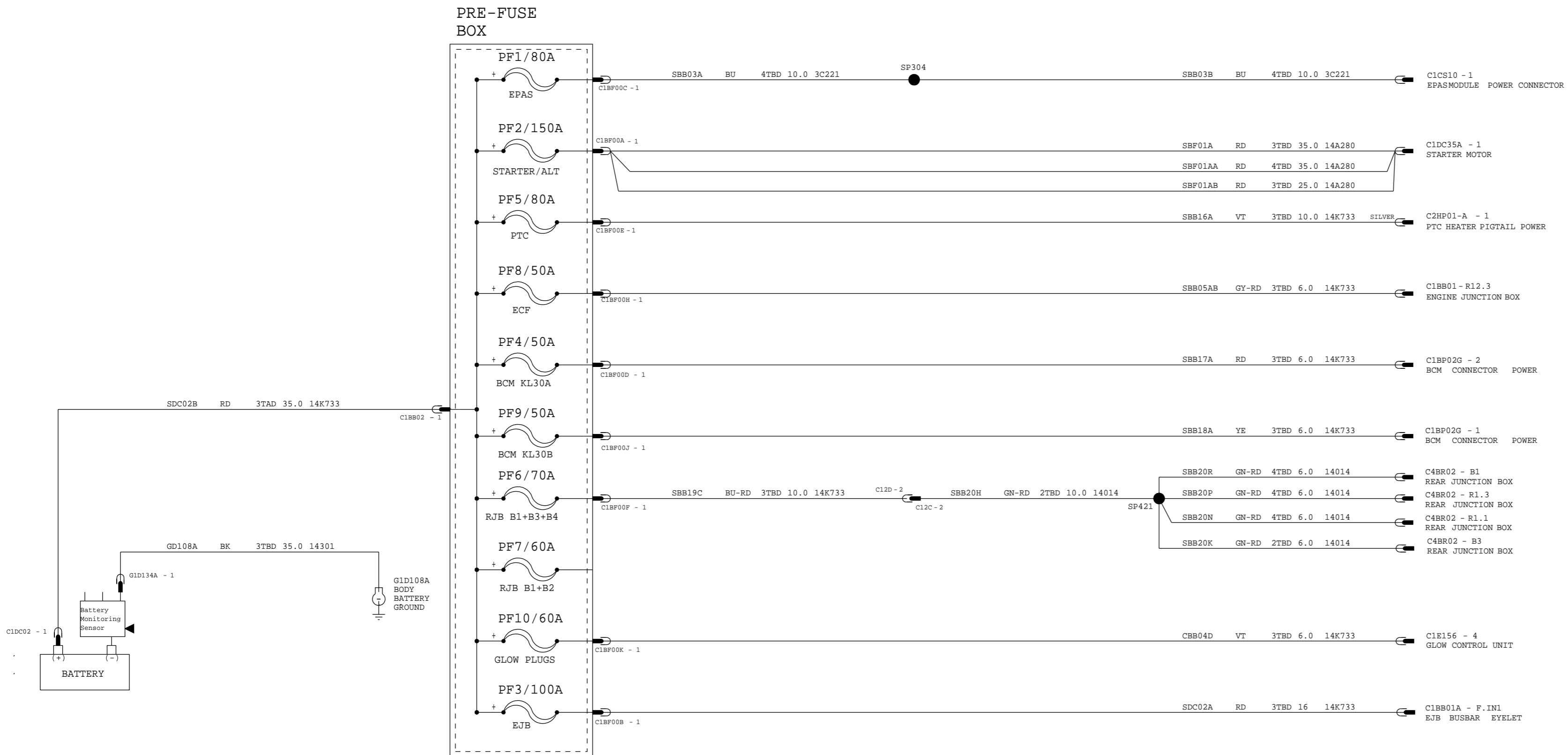


VEHICLE PROGRAM:CI_MCA		MODEL YEAR:MY2011	VEHICLE:C346
SUBSYSTEM: 1		POWER DISTRIBUTION	
REVISION:008		REVISION DATE: 2010-05-05	
REFERENCE EEU0-E-12329760-000			
PART MUST COMPLY WITH MATERIAL SPECIFICATION WSS-M99P9999-A1 TO HELP SAFEGUARD HEALTH, SAFETY AND THE ENVIRONMENT.			
DRAFTED IN ACCORDANCE WITH FAO ENGINEERING DRAFTING STANDARD CURRENT AT INITIAL RELEASE		DRWG STATUS: OPEN SIZE: A2	
CAD TYPE X	CAD LOC. ESS202	CAD FILE: PHBV6T-70010-AC	
OPER. NO.	UNIT	DRAWING PHBV6T-70000-AC	Page No.
DESIGN VYUEKSEL	DETAIL PERMAKOV	DOCUMENT NO. 31829418	Issue Index
CHECKED	SAFETY	TITLE C346 BCM	SHT 5 OF 139
SCALE 1	START DATE	DIVISION: EESE/RVT	RH SHOWN
		PLANT	

# C346 ELECTRICAL DISTRIBUTION PFB

## FUSE ARRANGEMENT PFB

NUMBER	FUNCTION	TYPE	RATE (Amp)
PF1	EPAS	MIDI	80
PF2	STARTER/ ALERNATOR	*STARTER	150
PF3	EJB	MIDI	100
PF4	BCM KL30A SUPPLY	MIDI	50
PF5	PTC	MIDI	80
PF6	RJB B1+B3+B4	MIDI	70
PF7	SPARE	MIDI	60
PF8	ENGINE COOLING FAN	MIDI	50
PF9	BCM KL30B SUPPLY	MIDI	50
PF10	GLOW PLUGS	MIDI	60



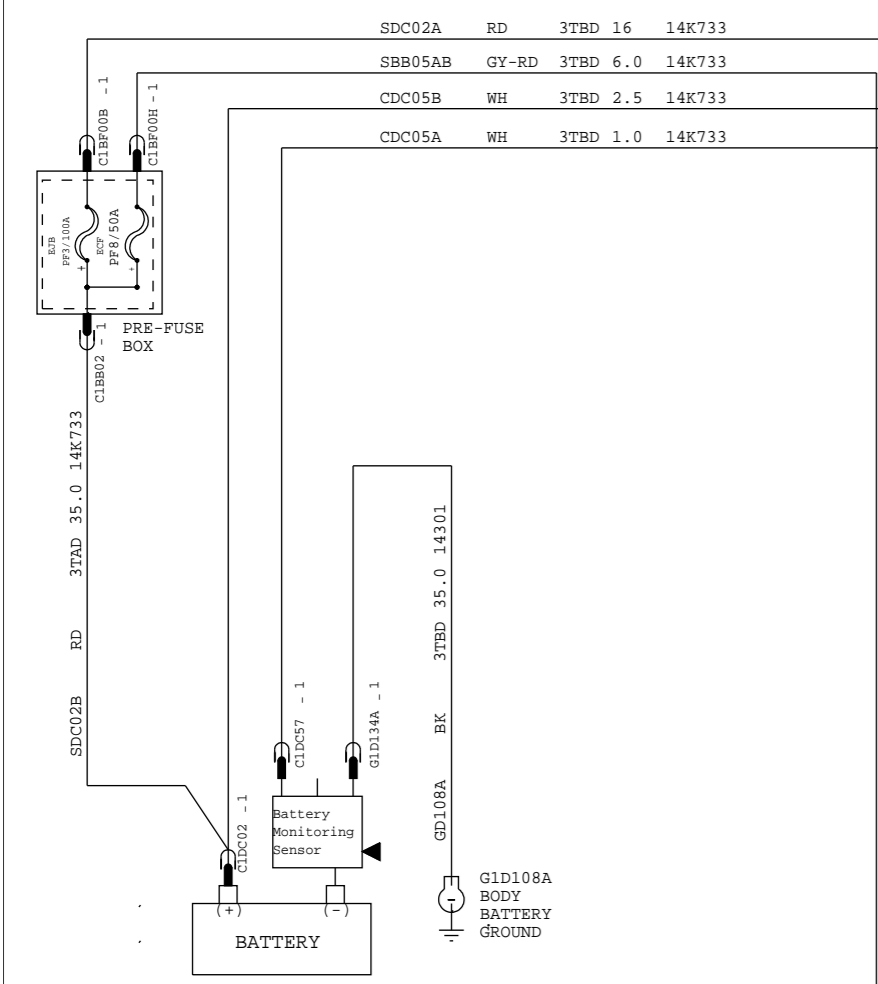
VEHICLE PROGRAM: C1_MCA	MODEL YEAR: MY2011	VEHICLE: C346
SUBSYSTEM: 1	POWER DISTRIBUTION	
REVISION: 008	REVISION DATE: 2010-05-05	
REFERENCE	EEU0-E-12329760-000	

PART MUST COMPLY WITH MATERIAL SPECIFICATION WSS-M99P9999-A1 TO HELP SAFEGUARD HEALTH, SAFETY AND THE ENVIRONMENT.

DRAFTED IN ACCORDANCE WITH FAO ENGINEERING DRAFTING STANDARD CURRENT AT INITIAL RELEASE	DRWG STATUS: OPEN SIZE: A2
---	-------------------------------

CAD TYPE X	CAD LOC. EES202	CAD FILE: PHBV6T-70010-DC	DATA IS MASTER
OPER. NO.	UNIT	DRAWING PHBV6T-70000-AC DOCUMENT NO. 31829418	Page No. Issue Index
DESIGN VYUERSEL	DETAIL PERMAKOV	TITLE C346 ELECTRICAL DISTRIBUTION PFB	SHT 6 OF 139
CHECKED	SAFETY		RH SHOWN
SCALE 1	START DATE	DIVISION: EESE/RVT PLANT	

# C346 ELECTRICAL DISTRIBUTION EJB

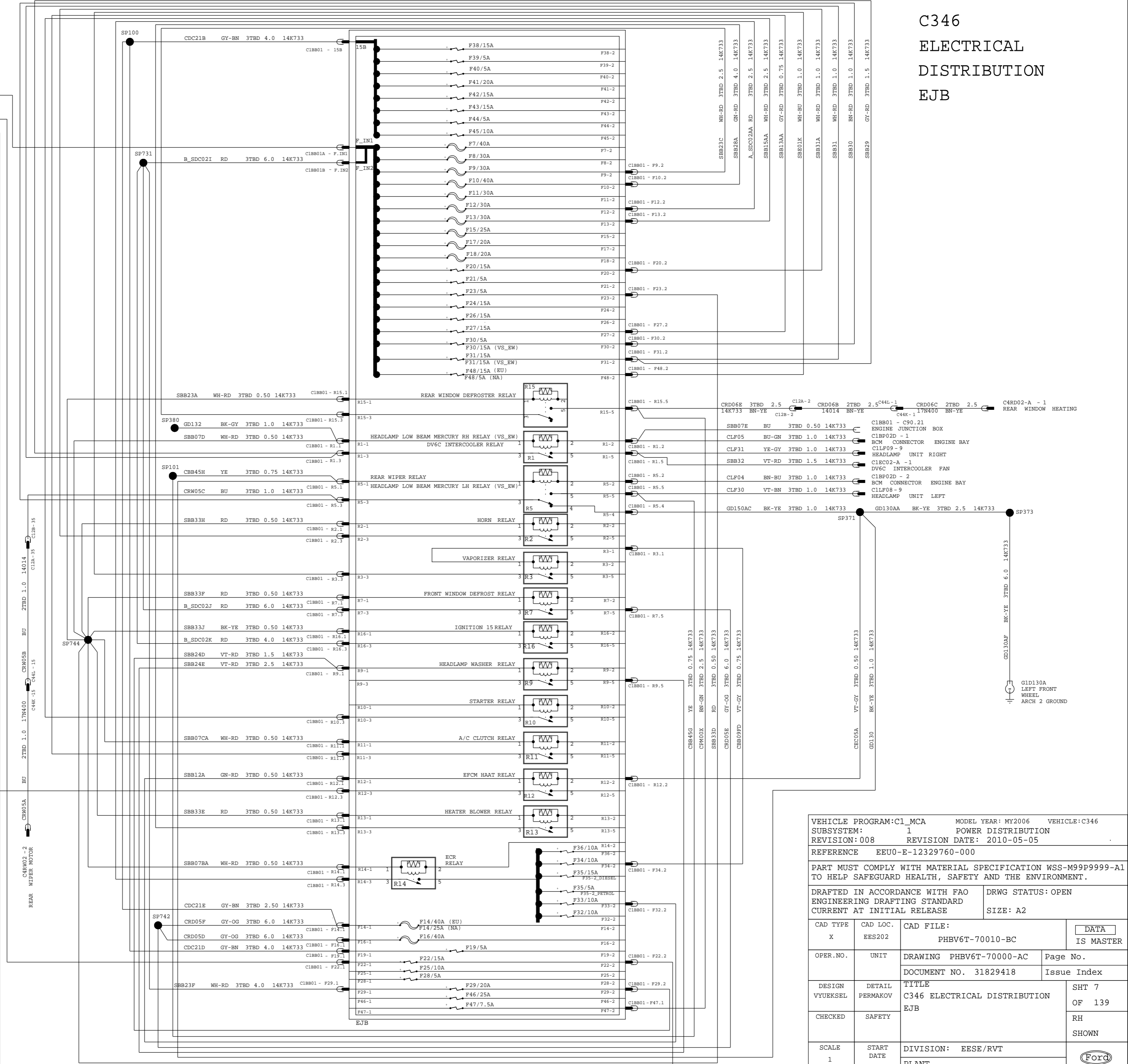


FUSE ARRANGEMENT EJB

NUMBER	FUNCTION	TYPE	RATE (Amp)
F7	ABS PUMP	J-CASE	40
F8	ABS VALVE	J-CASE	30
F9	REAR WINDOW DEFROSTER	J-CASE	30
F10	HEATER BLOWER MOTOR	J-CASE	40
F11	VQM	J-CASE	30
F12	ECR RELAY FUSE	J-CASE	30
F13	STARTER RELAY FUSE	J-CASE	30
F14	FRONT WINDOW DEFROSTER RIGHT(EU)	J-CASE	40
F15	REAR POWER WINDOW W/O DCU(NA)	J-CASE	25
F16	DPS6	J-CASE	25
F17	FRONT WINDOW DEFROSTER LEFT	J-CASE	40
F18	FUEL OPERATED HEATER	J-CASE	20
F19	FRONT WIPER MOTOR	J-CASE	20
F20	ABS/ESP 15 FEED	J-CASE	5
F21	HORN	J-CASE	15
F22	STOP LIGHT SWITCH	J-CASE	5
F23	BMS	J-CASE	15
F24	RELAY COILS , LSM	J-CASE	5
F25	REAR POWER OUTLET	J-CASE	15
F26	POWER OUTLET MIRROR W/O DCU	J-CASE	10
F27	TCM 30 FEED	J-CASE	15
F28	A/C CLUTCH	J-CASE	15
F29	FLR(EU)	J-CASE	5
F30	HEADLAMP WASHER	J-CASE	20
F31	SIGMA ECM 30 FEED	J-CASE	5
F32	HEADLAMP LOWBEAM MERCURY LH	J-CASE	15
F33	HEADLAMP LOWBEAM MERCURY RH	J-CASE	15
F34	INTERCOOLER FAN DV6C	J-CASE	15
F35	EGR VALVE, SWIRL CONTROL VALVES, HEGO SENSORS	J-CASE	10
F36	IGNITION COILS	J-CASE	10
F37	INJECTORS	J-CASE	10
F38	AGS/DIESEL FILTER HEATER	J-CASE	15
F39	ACTIVE GRILL SHUTTER	J-CASE	5
F40	ECM	J-CASE	10
F41	ECM/TCM 15 FEED	J-CASE	15
F42	HALOGEN LEVELING / HCM IGNITION	J-CASE	5
F43	EPAS 15 FEED	J-CASE	5
F44	BCM 15 FEED	J-CASE	20
F45	REAR WIPER	J-CASE	15
F46	EXTERIOR LIGHTING HID LEVELING	J-CASE	15
F47	FLR + FSM	J-CASE	5
F48	HEATED WASHER NOZZLE	J-CASE	10
F49	POWER WINDOW FRONT W/O DCU	J-CASE	25
F50	OUTER MIRROR DEFROSTER W/O DCU	J-CASE	7.5
F51	VAPORIZER DW10C(EU)	J-CASE	15

RELAY ARRANGEMENT EJB

NUMBER	FUNCTION	TYPE	RATE (Amp)
R1	HEADLAMP LOWBEAM MERCURY RH	MICRO	-
R2	DV6C INTERCOOLER	MICRO	-
R3	HORN	MICRO	-
R4	VAPORIZER RELAY	MICRO	-
R5	SPARE	MICRO(5 PIN)	-
R6	REAR WIPER	MICRO(5 PIN)	-
R7	HEADLAMP LOWBEAM MERCURY LH	MICRO(5 PIN)	-
R8	SPARE	MICRO(5 PIN)	-
R9	FRONT WINDOW DEFROSTER	POWER	-
R10	SPARE	POWER	-
R11	HEADLAMP WASHER	MICRO(5 PIN)	-
R12	STARTER RELAY	MINI	-
R13	A/C CLUTCH	MICRO	-
R14	EFCM HAAT	POWER	-
R15	HEATER BLOWER	MINI	-
R16	ECR	MINI	-
R17	REAR WINDOW DEFROSTER	POWER	-
R18	IGNITION 15	POWER	-



VEHICLE PROGRAM: C1_MCA		MODEL YEAR: MY2006	VEHICLE: C346
SUBSYSTEM: 1		POWER DISTRIBUTION	
REVISION: 008		REVISION DATE: 2010-05-05	
REFERENCE EEU0-E-12329760-000			
PART MUST COMPLY WITH MATERIAL SPECIFICATION WSS-M99P9999-A1 TO HELP SAFEGUARD HEALTH, SAFETY AND THE ENVIRONMENT.			
DRAFTED IN ACCORDANCE WITH FAO ENGINEERING DRAFTING STANDARD CURRENT AT INITIAL RELEASE		DRWG STATUS: OPEN	
CAD TYPE	CAD LOC.	CAD FILE:	DATA IS MASTER
X	EES202	PHBV6T-70010-BC	
OPER. NO.	UNIT	DRAWING PHBV6T-70000-AC	Page No.
		DOCUMENT NO. 31829418	Issue Index
DESIGN VYUEKSEL	DETAIL PERMAKOV	TITLE C346 ELECTRICAL DISTRIBUTION EJB	SHT 7 OF 139
CHECKED	SAFETY		RH SHOWN
SCALE 1	START DATE	DIVISION: EESE/RVT	PLANT



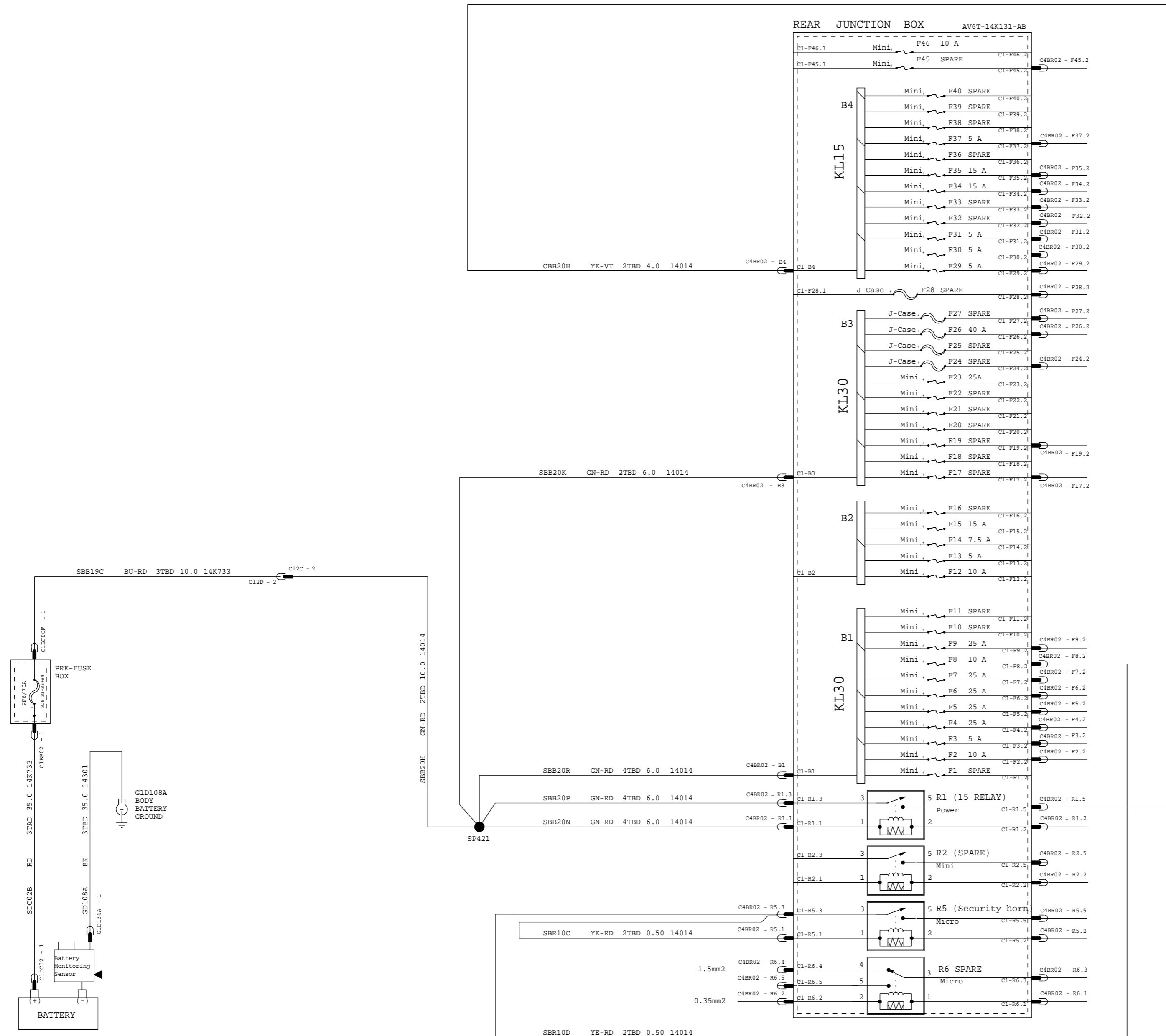
# C346 ELECTRICAL DISTRIBUTION RJB

## FUSE ARRANGEMENT RJB

NUMBER	FUNCTION	TYPE	RATE (Amp)
F1	SPARE	MINI	-
F2	KEYLESS VEHICLE MODULE	MINI	10
F3	KEYLESS VEHICLE DOOR HANDLES	MINI	5
F4	DCU FRONT LEFT	MINI	25
F5	DCU FRONT RIGHT	MINI	25
F6	DCU REAR LEFT	MINI	25
F7	DCU REAR RIGHT	MINI	25
F8	SECURITY HORN RELAY	MINI	10
F9	DRIVER SEAT MOTOR	MINI	25
F10	SPARE	MINI	-
F11	SPARE	MINI	-
F12	DEATC / MAC	MINI	10
F13	INSTRUMENT CLUSTER	MINI	5
F14	MFD/SYNC/GPSM	MINI	7.5
F15	RADIO / IAM , ICP	MINI	15
F16	SPARE	MINI	-
F17	SPARE	MINI	-
F18	SPARE	MINI	-
F19	SPARE	MINI	-
F20	SPARE	MINI	-
F21	SPARE	MINI	-
F22	SPARE	MINI	-
F23	AMPLIFIER AUD	MINI	25
F24	SPARE	J-CASE	-
F25	SPARE	J-CASE	-
F26	ACC / TRM TRAILER MODULE 30 FEED 1	J-CASE	40
F27	SPARE	J-CASE	-
F28	SPARE	J-CASE	-
F29	BLIS\FLC\CVM (non VQM)	MINI	5
F30	PAM	MINI	5
F31	PAC	MINI	5
F32	SPARE	MINI	-
F33	SPARE	MINI	10
F34	DRIVER SEAT HEATER	MINI	15
F35	PASSENGER SEAT HEATER	MINI	15
F36	SPARE	MINI	-
F37	SUNROOF	MINI	5
F38	SPARE	MINI	-
F39	SPARE	MINI	-
F40	SPARE	MINI	-
F41	SPARE	MINI	-
F42	SPARE	MINI	-
F43	SPARE	MINI	-
F44	SPARE	MINI	-
F45	SPARE	MINI	-
F46	BLIS/FLC/CVM (VQM)	MINI	10

## RELAY ARRANGEMENT RJB

NUMBER	FUNCTION	TYPE	RATE (Amp)
R1	REAR 15 RELAY (2/88)	POWER	-
R2	SPARE	MINI	-
R3	SPARE	MICRO	-
R4	SPARE	MICRO	-
R5	SECURITY HORN RELAY	MICRO	-
R6	SPARE	MICRO	-

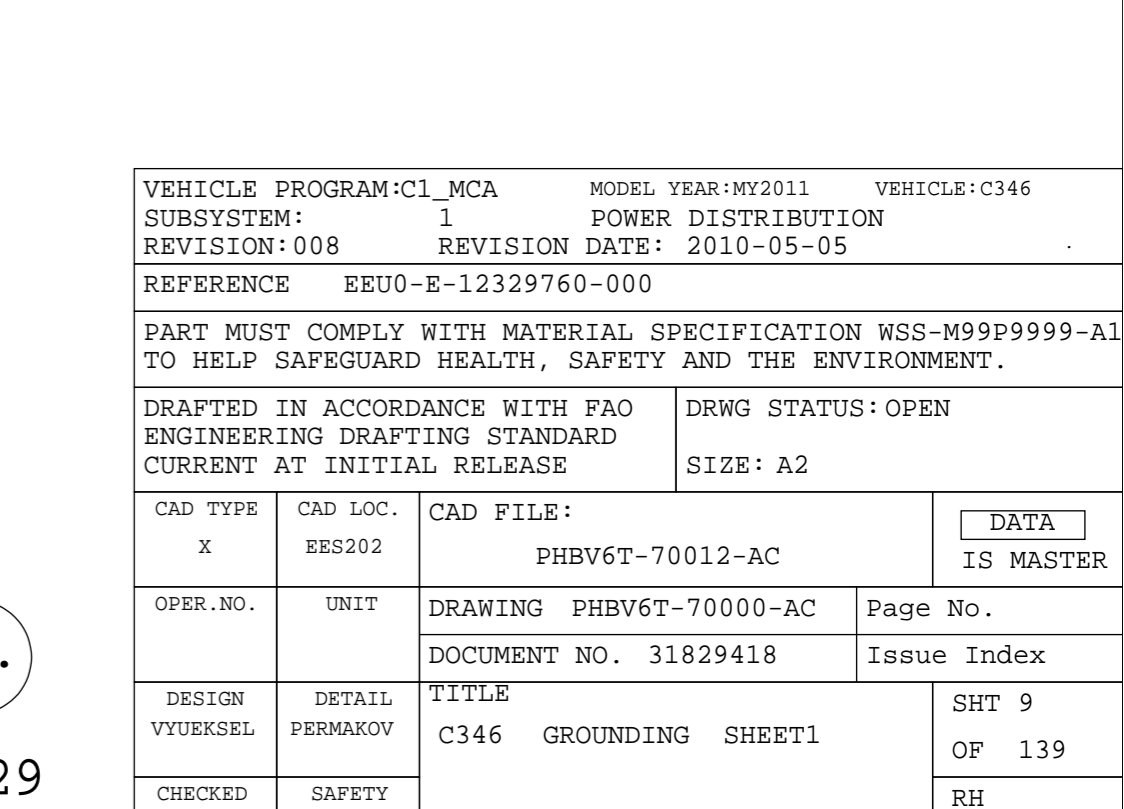
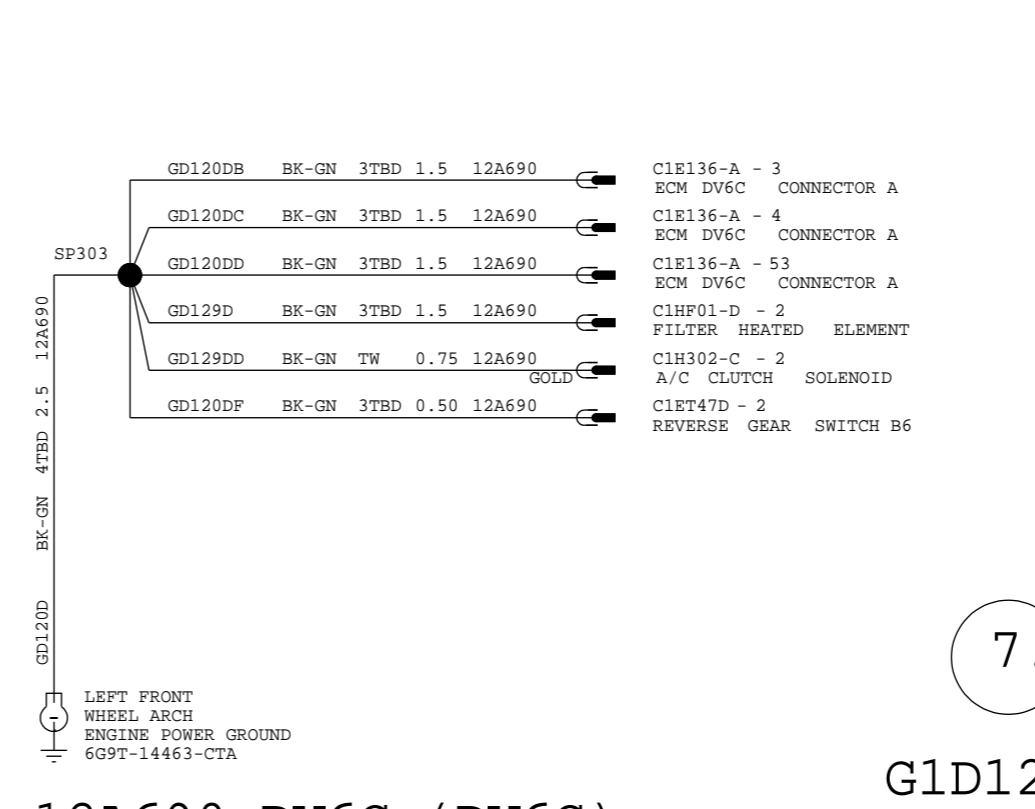
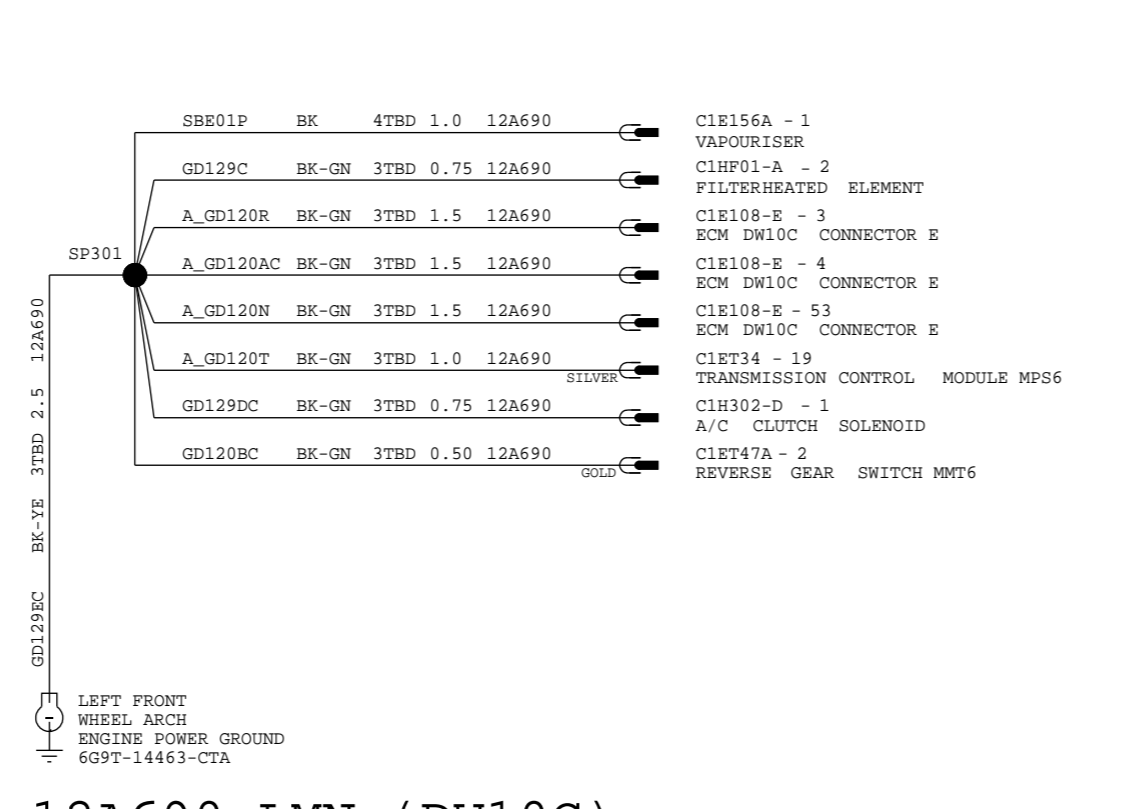
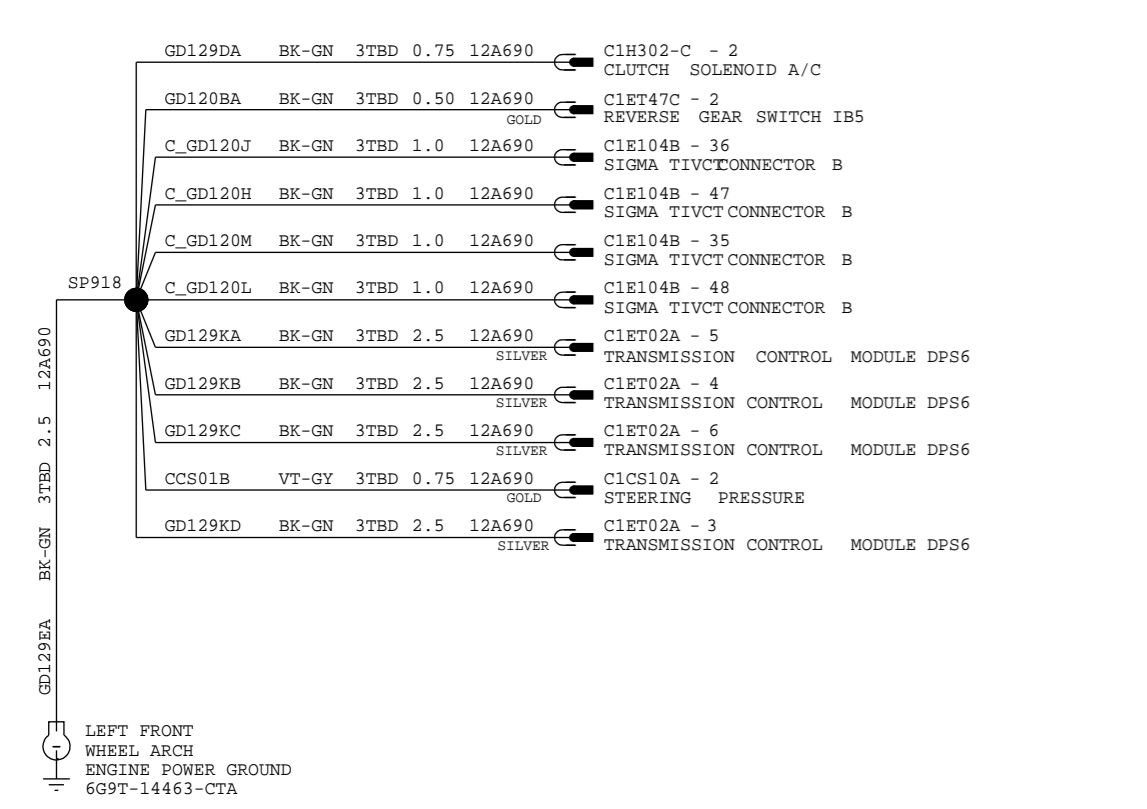
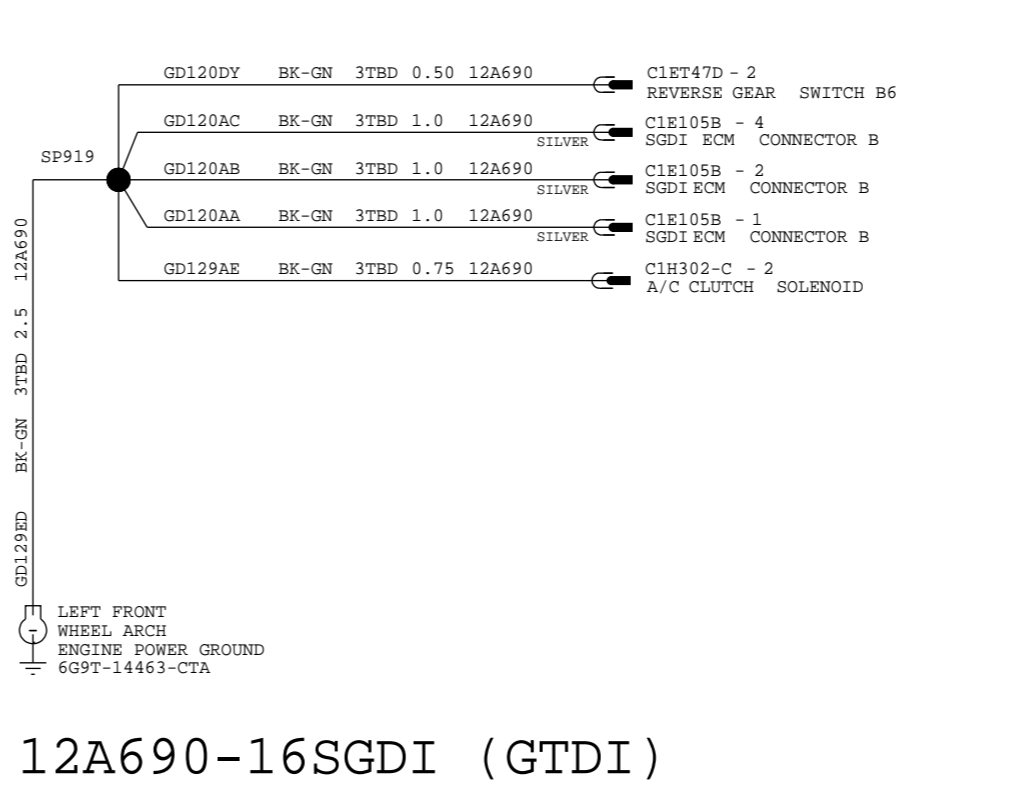
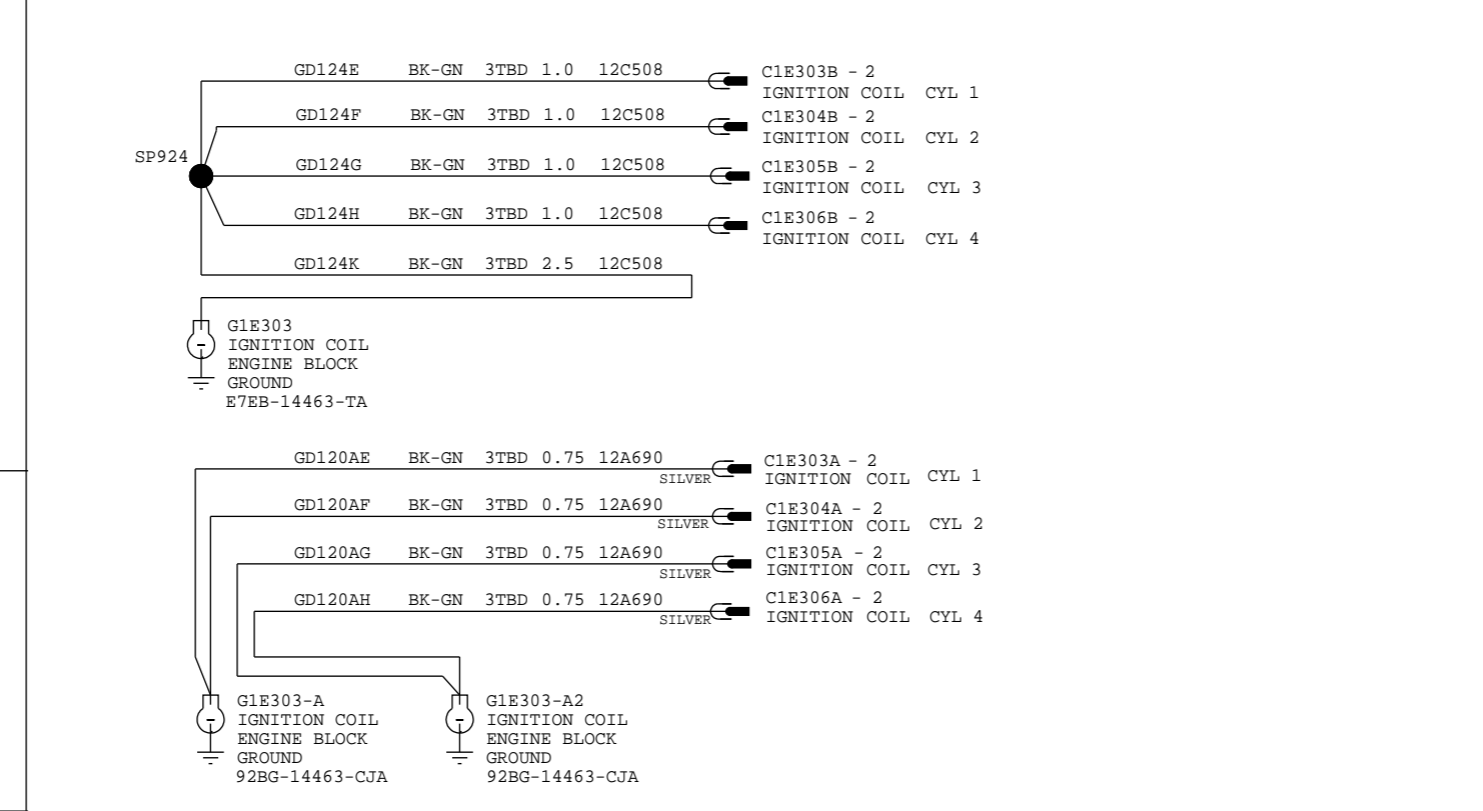
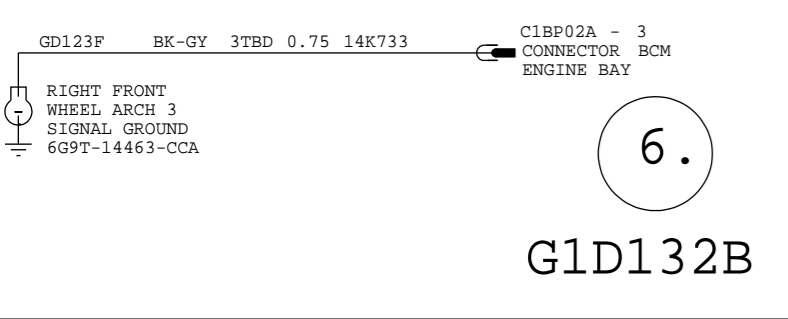
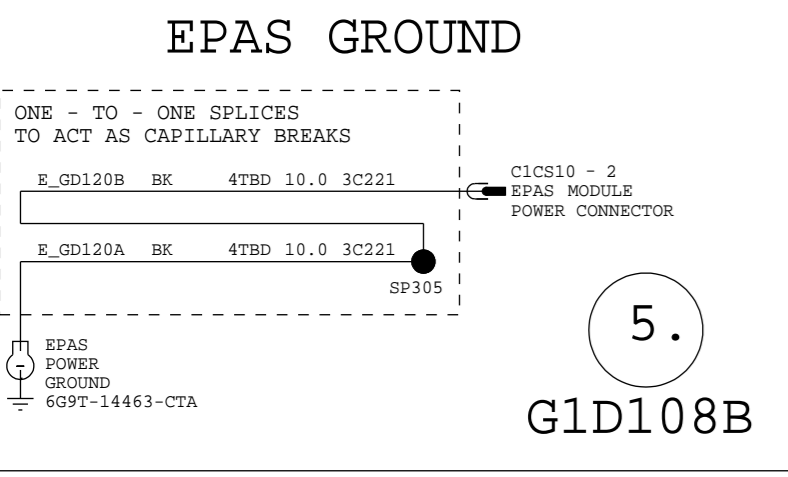
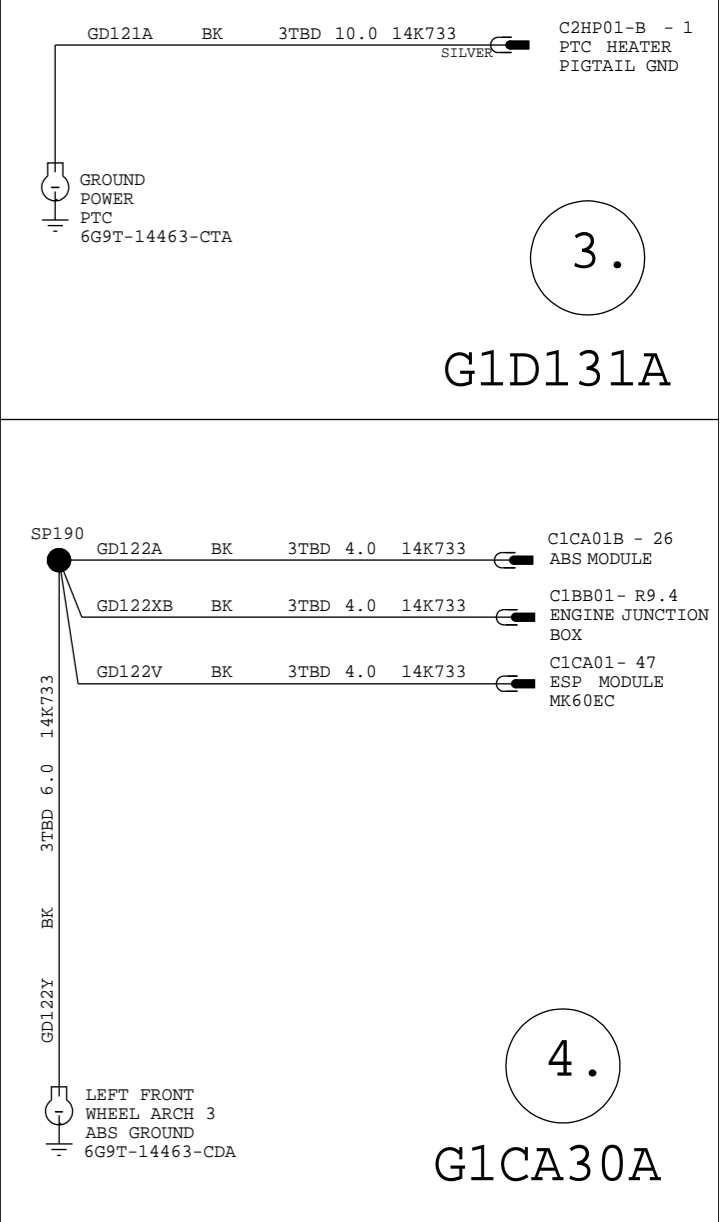
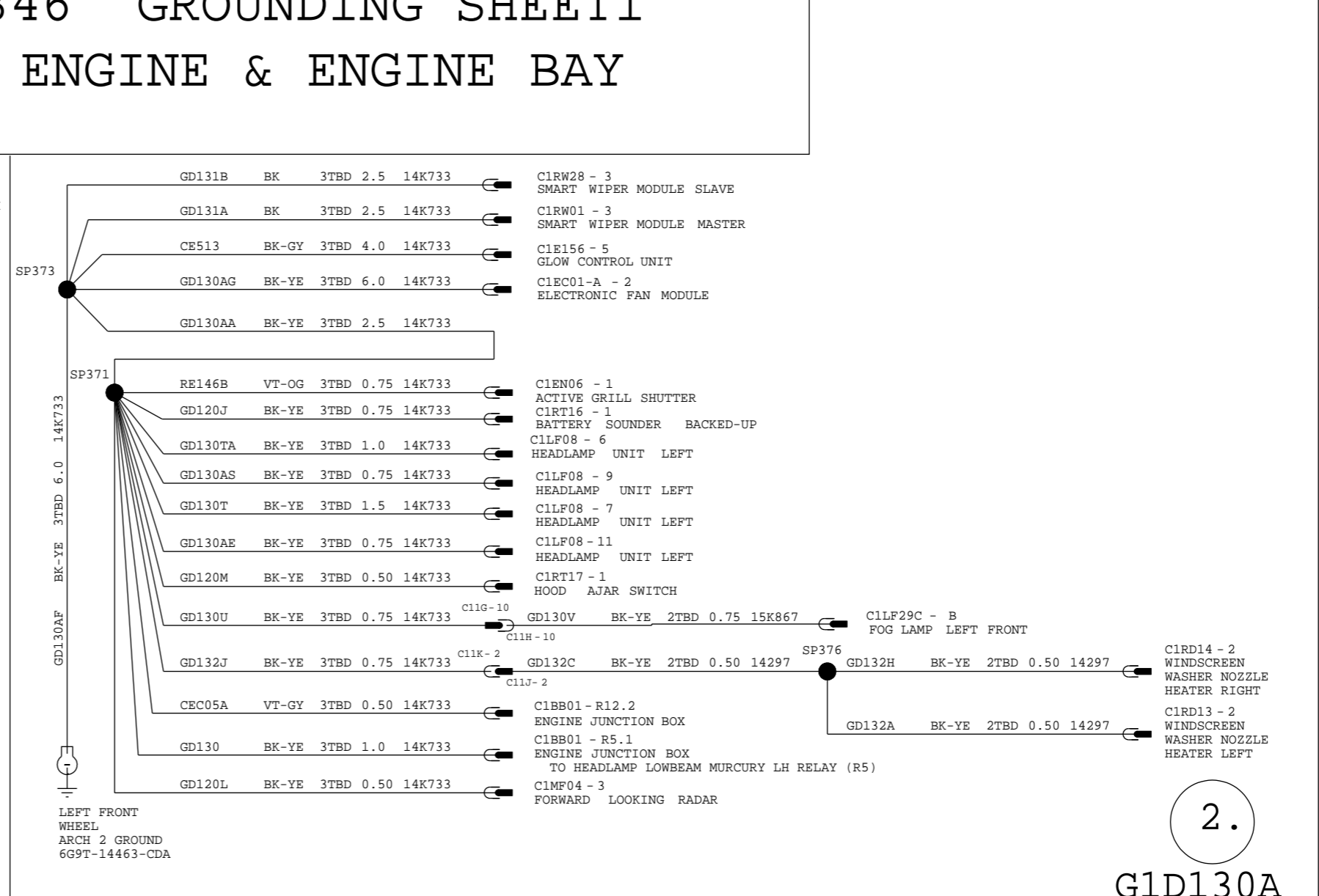
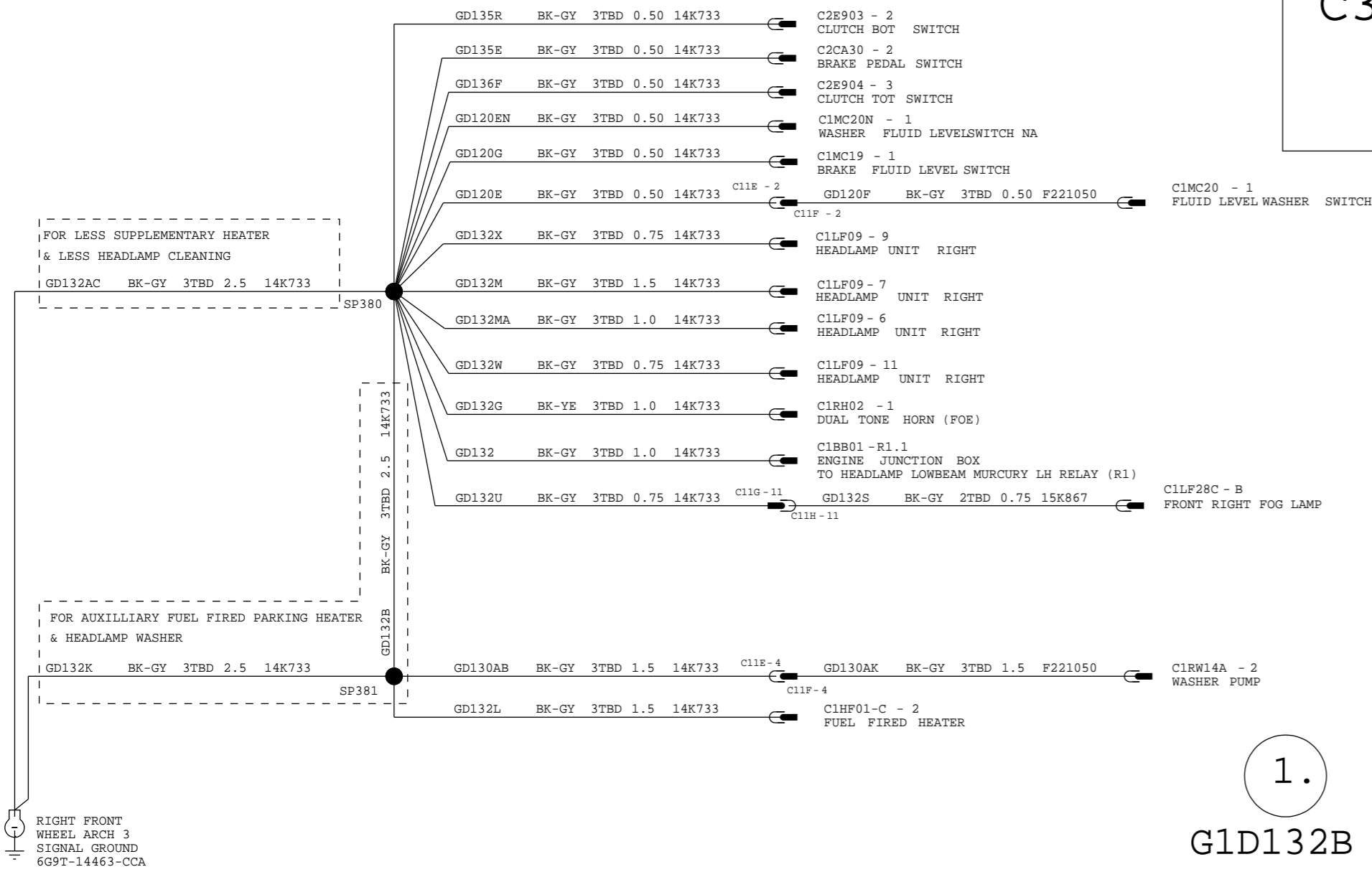


VEHICLE PROGRAM: C1_MCA	MODEL YEAR: MY2011	VEHICLE: C346
SUBSYSTEM: 1	POWER DISTRIBUTION	
REVISION: 008	REVISION DATE: 2010-05-05	
REFERENCE	EEU0-E-12329760-000	
PART MUST COMPLY WITH MATERIAL SPECIFICATION WSS-M99P9999-A1 TO HELP SAFEGUARD HEALTH, SAFETY AND THE ENVIRONMENT.		
DRAFTED IN ACCORDANCE WITH FAO ENGINEERING DRAFTING STANDARD CURRENT AT INITIAL RELEASE		DRWG STATUS: OPEN
		SIZE: A2

CAD TYPE	CAD LOC.	CAD FILE:	DATA
X	EES202	PHBV6T-70010-CC	IS MASTER
OPER. NO.	UNIT	DRAWING PHBV6T-70000-AC	Page No.
		DOCUMENT NO. 31829418	Issue Index
DESIGN	DETAIL	TITLE	SHT 8
VYUEKSEL	PERMAKOV	C346 ELECTRICAL DISTRIBUTION	OF 139
CHECKED	SAFETY	RJB	RH
			SHOWN
SCALE	START DATE	DIVISION: EESE/RVT	
1		PLANT	Ford



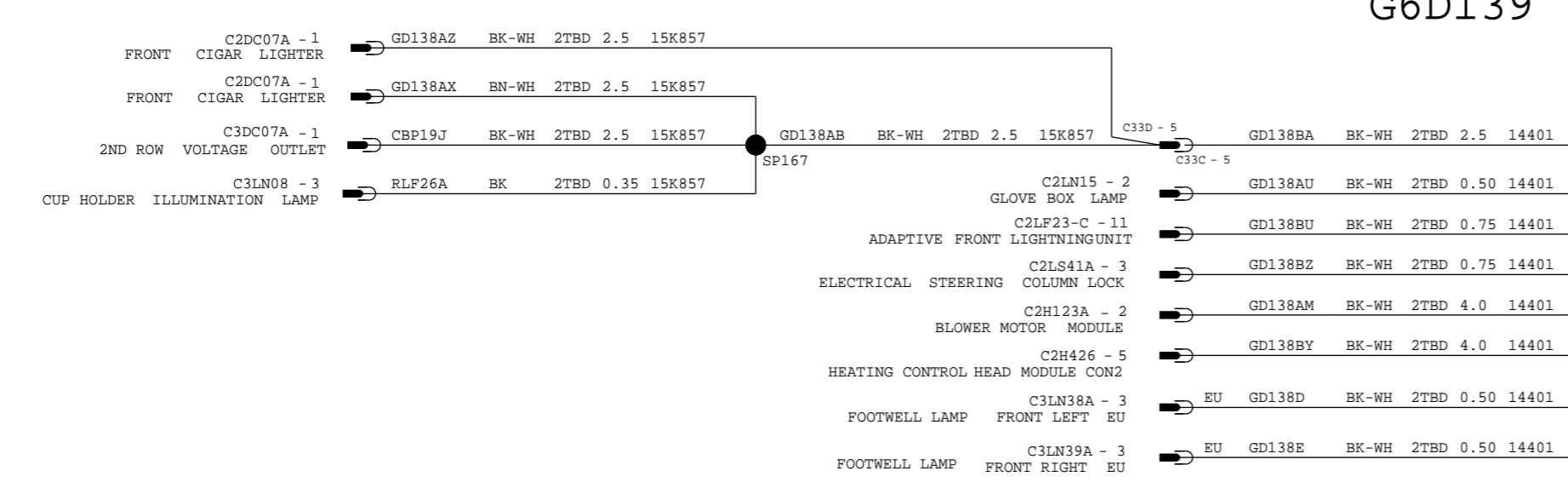
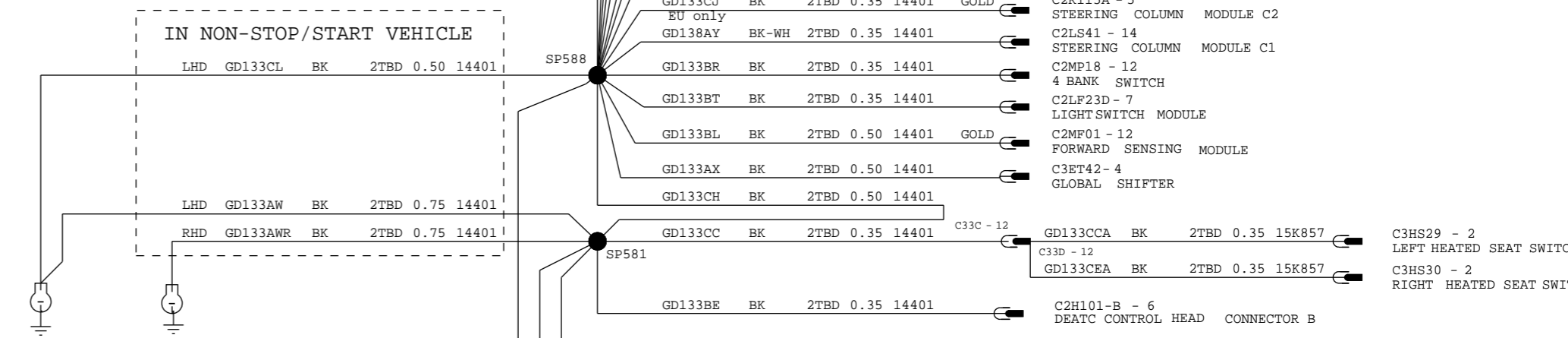
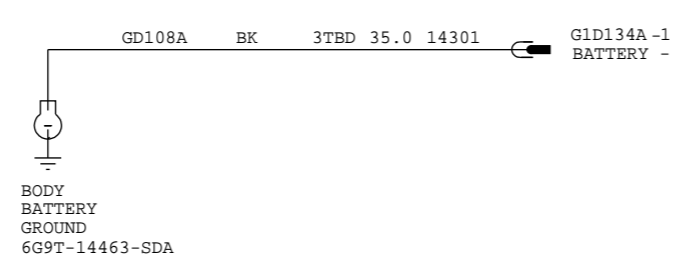
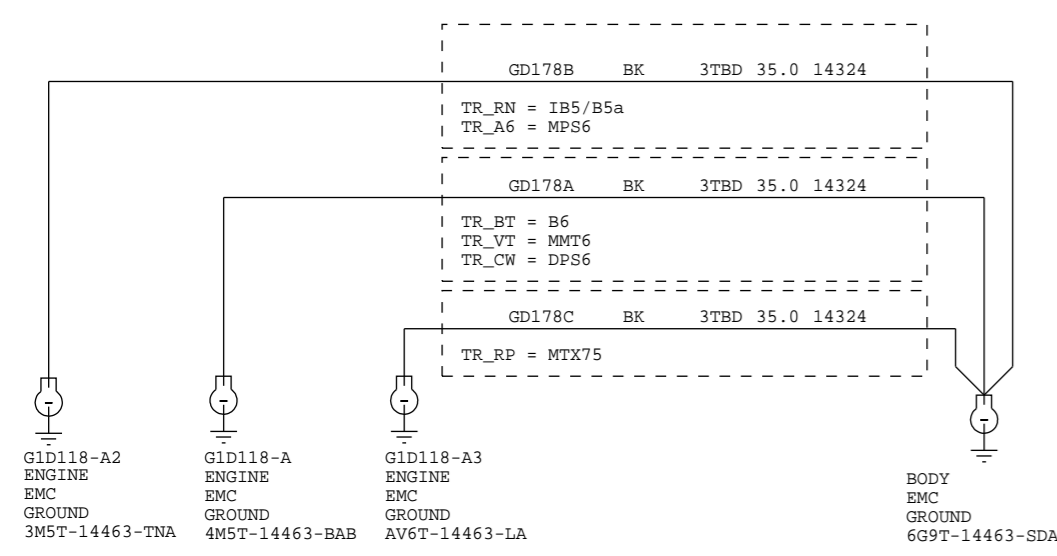
# C346 GROUNDING SHEET1 ENGINE & ENGINE BAY



VEHICLE PROGRAM: C1_MCA		MODEL YEAR: MY2011	VEHICLE: C346
SUBSYSTEM: 1		POWER DISTRIBUTION	
REVISION: 008	REVISION DATE: 2010-05-05		
REFERENCE EEU0-E-12329760-000			
PART MUST COMPLY WITH MATERIAL SPECIFICATION WSS-M99P9999-A1 TO HELP SAFEGUARD HEALTH, SAFETY AND THE ENVIRONMENT.			
DRAWN IN ACCORDANCE WITH FAO ENGINEERING DRAFTING STANDARD		DRWG STATUS: OPEN	
CURRENT AT INITIAL RELEASE		SIZE: A2	
CAD TYPE	CAD LOC.	CAD FILE:	
X	ESS202	PHBV6T-70012-AC	
OPER. NO.	UNIT	DRAWING PHBV6T-70000-AC	Page No.
DESIGN VYUEKSEL	DETAIL PERMAKOV	DOCUMENT NO. 31829418	Issue Index
CHECKED	SAFETY	TITLE C346 GROUNDING SHEET1	SHT 9 OF 139
SCALE 1	START DATE 031105	DIVISION: EESE/RVT	RH SHOWN
		PLANT	Ford

# C346 GROUNDING SHEET 2

## EMC GND, BATTERY, IP



VEHICLE PROGRAM: C1\_MCA MODEL YEAR: MY2011 VEHICLE: C346  
 SUBSYSTEM: 1 POWER DISTRIBUTION  
 REVISION: 008 REVISION DATE: 2010-05-05  
 REFERENCE EEU0-E-12329760-000

PART MUST COMPLY WITH MATERIAL SPECIFICATION WSS-M99P9999-A1 TO HELP SAFEGUARD HEALTH, SAFETY AND THE ENVIRONMENT.

DRAFTED IN ACCORDANCE WITH FAO ENGINEERING DRAFTING STANDARD DRWG STATUS: OPEN  
 CURRENT AT INITIAL RELEASE SIZE: A2

CAD TYPE	CAD LOC.	CAD FILE:	DATA
X	EES202	PHBV6T-70012-BC	IS MASTER
OPER. NO.	UNIT	DRAWING	Page No.
		PHBV6T-70000-AC	
DESIGN	DETAIL	DOCUMENT NO.	Issue Index
VYUEKSEL	PERMAKOV	31829418	
CHECKED	SAFETY	TITLE	SHT 10
		C346 GROUNDING SHEET2	OF 139
SCALE	START DATE	DIVISION:	RH
1		EESE/RVT	SHOWN
		PLANT	

