



PARTS LIST

The Source for Power...
Worldwide™

VSG 411-413

67-79 CID

GASOLINE ENGINE AND POWER UNIT



GENERAL INFORMATION

This Ford Power Products Parts Catalog has been prepared to assist you, the owner, in identifying the correct replacement parts for your Ford Industrial Engine.

The catalog is divided into major sections which correspond to specific areas of the engine, such as cylinder block, cylinder head, crankshaft, oil pump, water pump, etc. Each of these sections is made up of illustrations followed by text for identifying detail parts.

ILLUSTRATIONS

The illustrations show typical assemblies but may not in all cases show the shape or details of parts required. However, the purpose of the illustrations is to identify parts through visual and descriptive assistance. Illustrations are located at the beginning of each section or immediately adjacent to the applicable text. Parts are identified on each illustration by reference numbers. Find the reference number of the part desired and locate it in the parts list reference column. As you will note, only the year, part name description and quantity are shown. When ordering replacement parts for your engine it will be necessary to contact your local Ford Power Products distributor whose phone number can be found on the inside cover of this parts list.

PARTS INFORMATION

Each listing contains illustrations, reference number, the effective year range, part name including description, and the quantity required to assist in identifying the correct part.

SYMBOLS IN YEAR COLUMN

- 72 Parts used commencing with initial production of engines are indicated by only the year in which production commenced.
- 72/75 Parts used for a period of years and then discontinued are indicated in the year column by a commencing and finishing year.
- 75/ Parts still used in current production are indicated by the commencing year followed by a slant (/).

NOTE: The descriptions and specifications contained in this manual were in effect at the time the book was released for printing. Ford Motor Company reserves the right to discontinue models at any time, or change specifications or design, without notice and without incurring obligation.



VSG 411-413
67-79 CID
GASOLINE ENGINE AND POWER UNIT

SERVICE PARTS LIST

ENGINE IDENTIFICATION

To assure correct selection of service replacement parts, record all information imprinted on the Engine Name Plate (Fig. 1) and/or Distributor Modification Name Plate (Fig. 2) affixed to the engine undergoing service repairs. Utilizing the model number, refer to your Bill of Materials (B.O.M.) Microfiche or Distributor Bill of Materials (D.B.O.M.) Microfiche to identify the base engine and all production accessories added to the base engine.

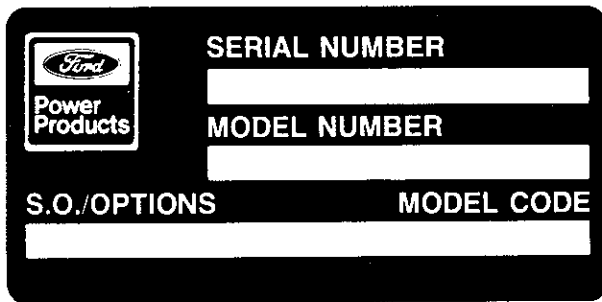


FIG. 1 ENGINE NAME PLATE

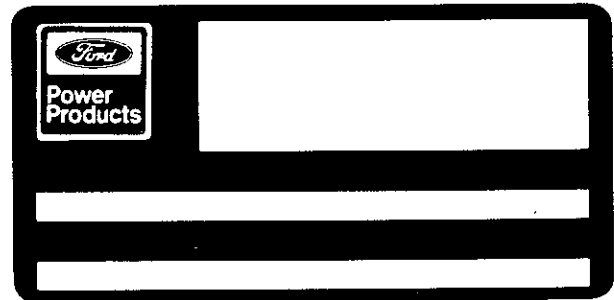


FIG. 2 DISTRIBUTOR MODIFICATION NAME PLATE

SPECIAL NOTE

Since its introduction in 1984, many product improvements have been incorporated into the VSG 411/413 engine series. The most significant improvement is the evolution of the ignition system as illustrated in the following table:

Model	Year of Manufacture	Ignition Type
VSG 411	84/86	Breaker Point
VSG 411-413	86/89	Solid State
VSG-411-413	89/	Distributorless
VSG-411-413	84/89	Breaker Point or Solid State

In order to obtain the correct service replacement parts for your engine, it is essential that the ignition type be identified.

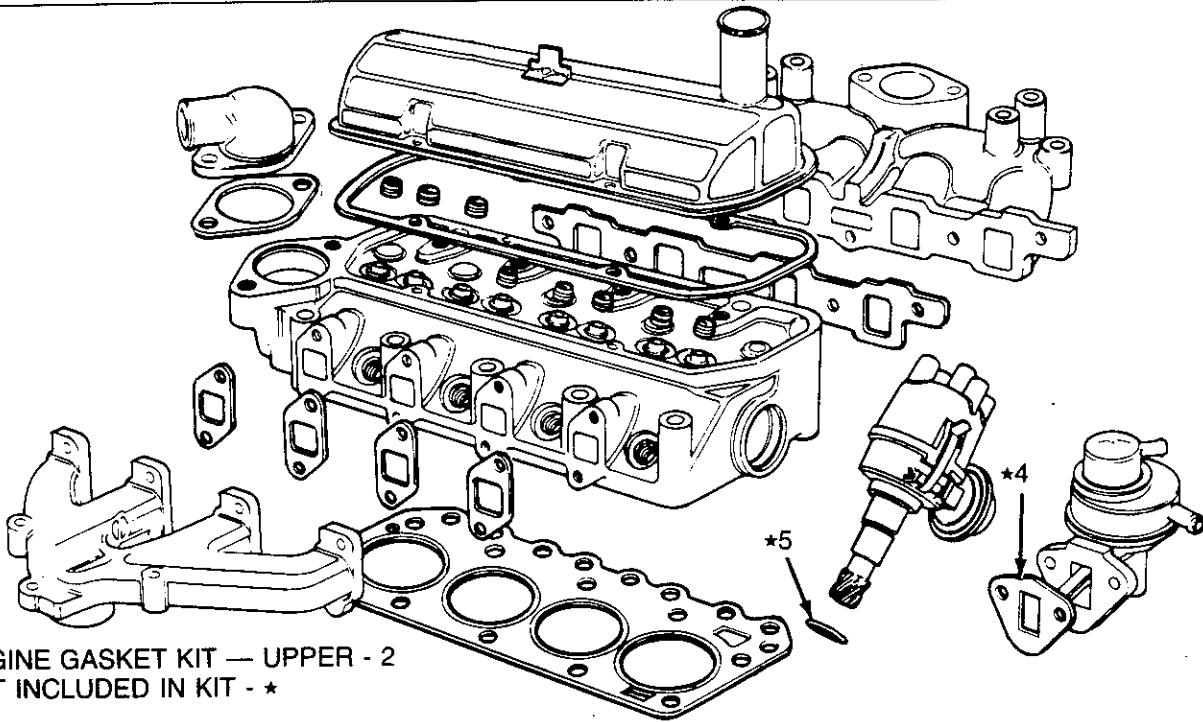
REFER TO THE IGNITION SYSTEM SECTION OF YOUR MAINTENANCE AND OPERATOR'S MANUAL TO IDENTIFY THE TYPE OF IGNITION SYSTEM EQUIPPED ON YOUR ENGINE.

VSG 411-413
67-79 CID
GASOLINE ENGINE AND POWER UNIT



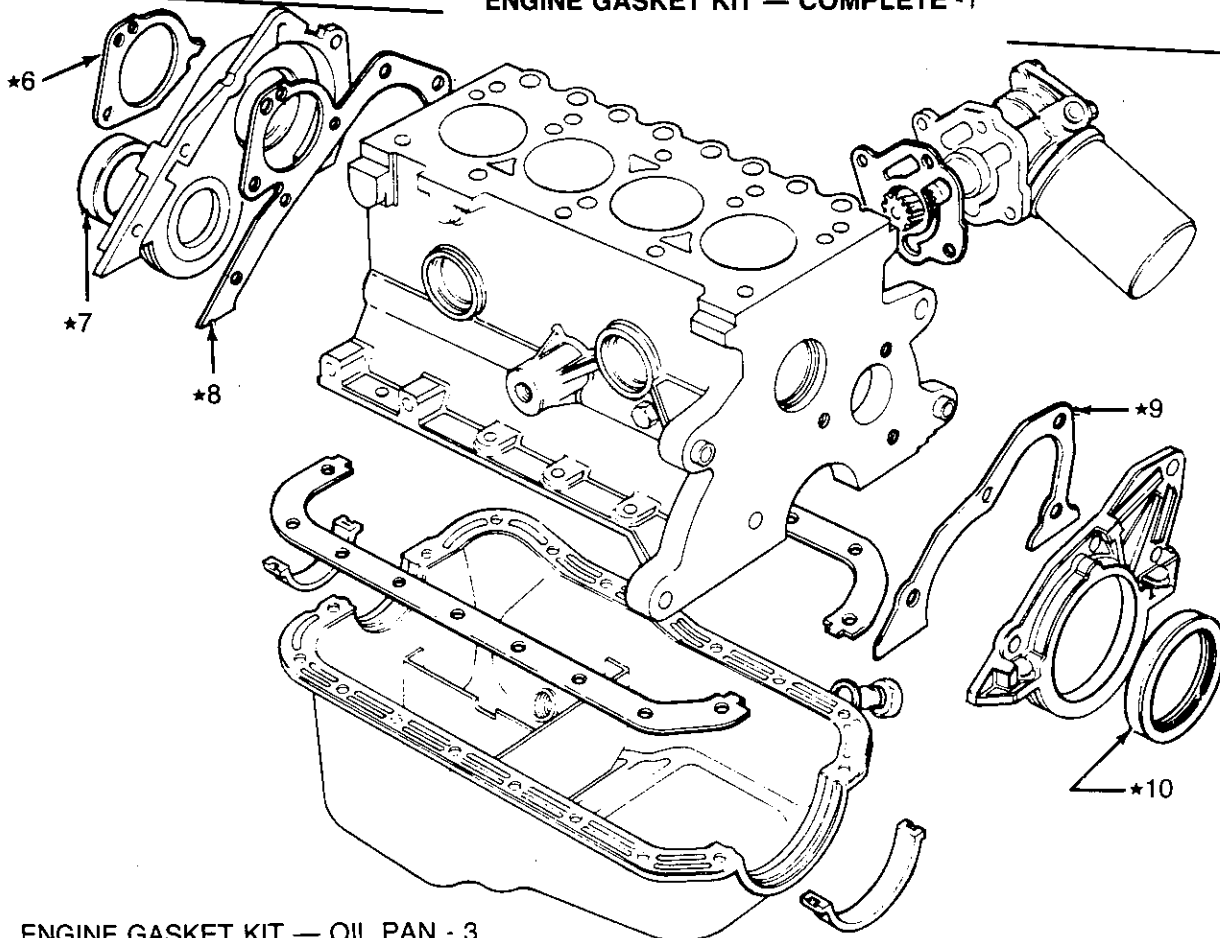
INDEX

AIR CLEANER - VARIABLE VENTURI CARBURETOR	38
AIR CLEANER - DOWNDRAFT CARBURETOR	40
ALTERNATOR	42
BLOCK - CYLINDER	4
CAMSHAFT AND BEARINGS	10
CARBURETOR - VARIABLE VENTURI	32
CARBURETOR - DOWNDRAFT	34
CARBURETOR - SIDEDRAFT	36
CHAIN - TIMING	8
CHOKE AND THROTTLE CABLE	58
CLUTCH ASSEMBLY	18
CONNECTING RODS AND BEARINGS	12
COVER - FRONT TIMING	8
COVER - ROCKER ARM	6
CRANKSHAFT AND BEARINGS	12
EXHAUST SYSTEM	30
FAN BLADE ASSEMBLY	24
FILTER - FUEL	28
FILTER - OIL	22
FLYWHEEL AND RING GEAR	18
GASKET KITS	2
GAUGES, INSTRUMENTS AND PANEL	56
GOVERNOR	52
HEAD - CYLINDER	6
HOSES - COOLING SYSTEM	54
HOUSING - FLYWHEEL	20
IGNITION SYSTEM - BREAKER POINT	46
IGNITION SYSTEM - SOLID STATE	48
IGNITION SYSTEM - DISTRIBUTORLESS	50
MANIFOLDS - INTAKE AND EXHAUST	30
PAN - OIL	22
PISTONS AND RINGS	12
POWER TAKE-OFF ASSEMBLY	20
PUMP - FUEL	28
PUMP - OIL	22
PUMP - WATER	24
RADIATOR	54
RETAINER AND SEAL - REAR ENGINE OIL	12
SENSOR - WATER TEMPERATURE	30
STARTER MOTOR	44
SUPPORT - FRONT ENGINE AND RADIATOR	54
SUPPORT - REAR ENGINE	60
SWITCH - SPEED LIMITING	52
THERMOSTAT	24
TRANSDUCER - IGNITION	4
VALVES AND RELATED PARTS	6
VALVE CONTROL	10
WIRING HARNESS	56
WIRING HARNESS - IGNITION	50



ENGINE GASKET KIT — UPPER - 2
NOT INCLUDED IN KIT - *

ENGINE GASKET KIT — COMPLETE - 1



ENGINE GASKET KIT — OIL PAN - 3
NOT INCLUDED IN KIT - *

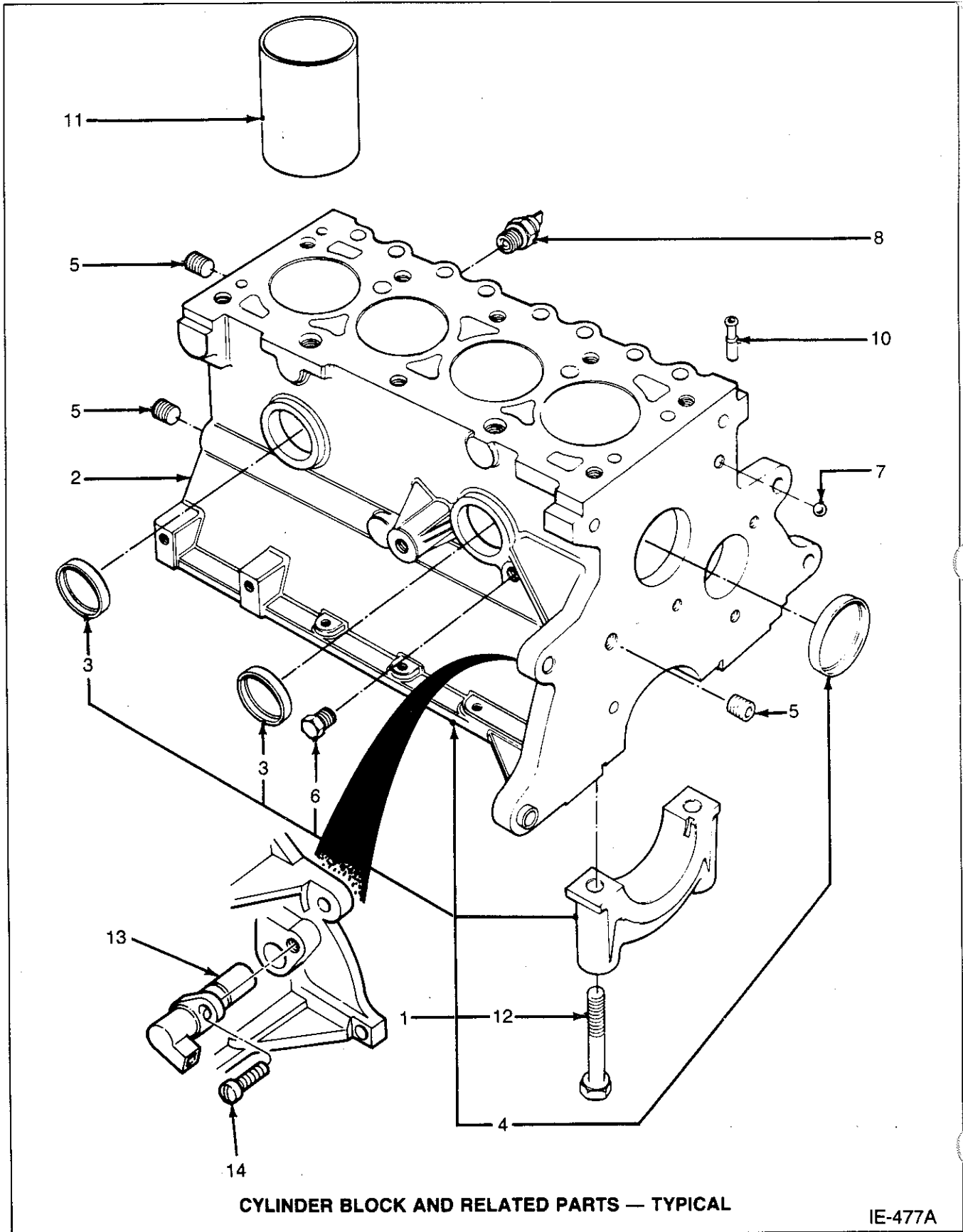
ENGINE GASKET KITS — TYPICAL

IE-476A

VSG 411-413
67-79 CID
GASOLINE ENGINE AND POWER UNIT



REF NO.	YEAR	DESCRIPTION	QUANTITY	
			67	79
ENGINE GASKET KITS AND GASKETS				
ENGINE GASKET KIT - COMPLETE				
1	84/89	■Kit	1	
	86/89	●Kit		1
	89/	★Kit		1
	89/92	★Kit	1	
ENGINE GASKET KIT - UPPER				
2	84/89	■Kit	1	
	86/89	●Kit		1
	89/	★Kit	1	
	89/	★Kit		1
ENGINE GASKET KIT - LOWER				
3	84/92	Kit - Oil Pan Gasket	1	
	92/	★Kit - Oil Pan Gasket		1
	86/	Kit - Oil Pan Gasket		1
GASKETS AND SEALS - NOT INCLUDED IN UPPER OR LOWER GASKET KITS				
4	84/	Gasket - Fuel Pump	1	1
5	84/86	*Seal - Distributor to Cylinder Block	1	1
6	84/	Gasket - Water Pump	1	1
7	84/	Seal - Front Cover	1	1
8	84/	Gasket - Front Cover	1	1
9	84/92	Gasket - Rear Retainer	1	
9	92/	★Gasket - Rear Retainer	1	
9	86/	Gasket - Rear Retainer		1
10	84/	Seal - Crankshaft Rear	1	1
*Used on engines having a breaker point ignition system.				
●Used on engines having a solid state ignition system.				
★Used on engines having a distributorless ignition system.				
■Used on engines having a breaker point or a solid state distributor ignition.				



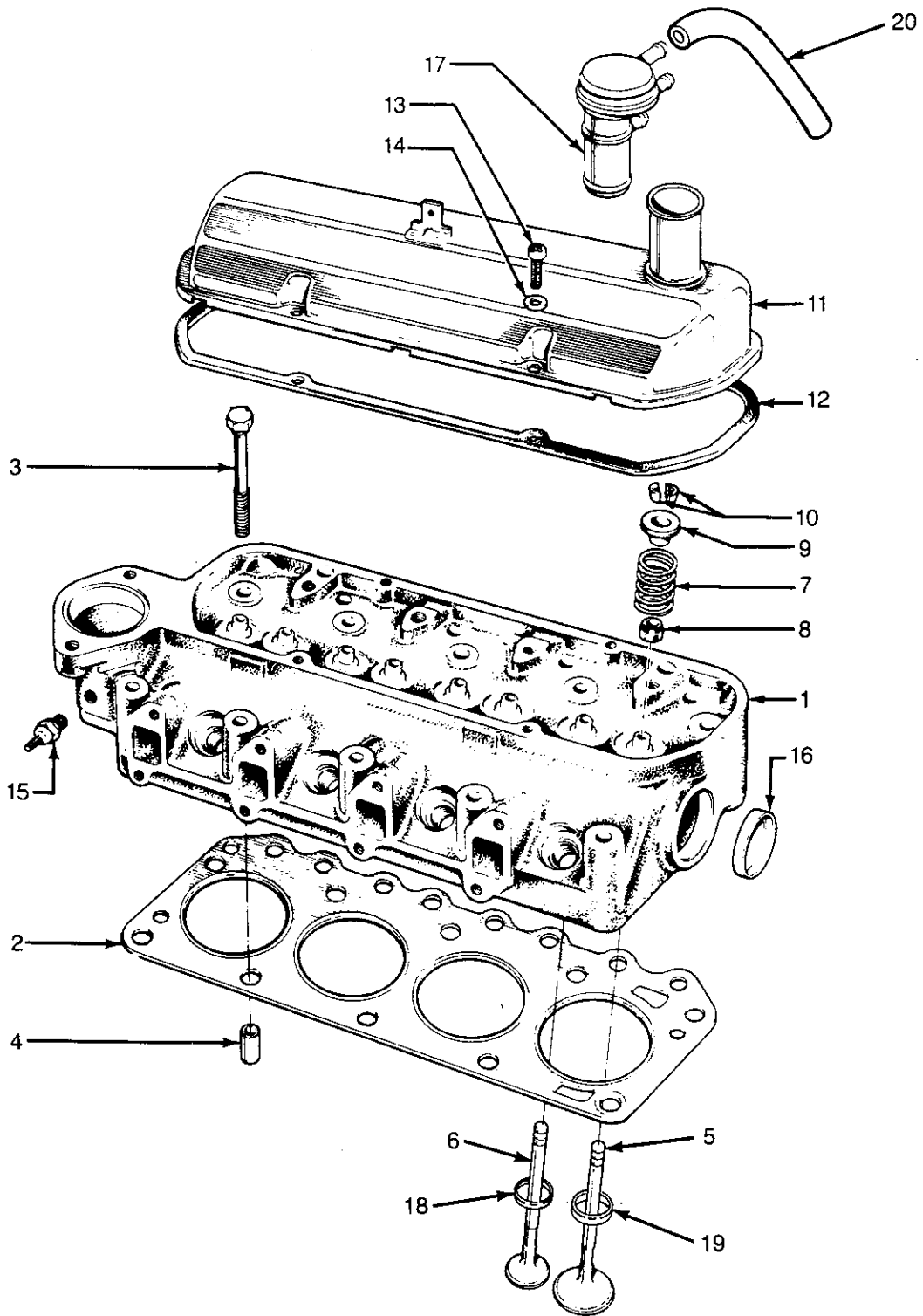
CYLINDER BLOCK AND RELATED PARTS — TYPICAL

IE-477A

**VSG 411-413
67-79 CID
GASOLINE ENGINE AND POWER UNIT**



REF NO.	YEAR	DESCRIPTION	QUANTITY	
			67	79
CYLINDER BLOCK AND RELATED PARTS				
BLOCK ASSEMBLY				
1	84/89	■Block - Cylinder	1	
	86/89	●Block - Cylinder		1
	89/92	★Block - Cylinder	1	1
	89/ 92/	★Block - Cylinder	1	1
CYLINDER ASSEMBLY				
2	84/89	■Block - Cylinder - With Crank, Pistons, Rings, Etc.	1	
	86/89	●Block - Cylinder - With Crank, Pistons, Rings, Etc.		1
	89/92	★Block - Cylinder - With Crank, Pistons, Rings, Etc.	1	1
	89/ 92/	★Block - Cylinder - With Crank, Pistons, Rings, Etc.	1	1
PLUGS - CYLINDER BLOCK				
3	84/	Plugs - Expansion - 1.639 Dia.	2	2
4	84/	Plug - 51 mm (2.01)	1	1
5	84/	Plug - 1/4 NPT	3	3
6	84/	Plug - 1/4 NPT	1	1
7	84/	Plug - Ball - Oil Gallery - 11mm (.43)	1	1
8	84/	Switch - Oil Pressure	1	1
9	84/	Cover - Oil Pressure Switch (Not Illustrated)	1	1
10	84/	Adapter	1	1
11	84/89	■Liner - Cylinder	AR	
	86/89	●Liner - Cylinder		AR
	89/	★Liner - Cylinder	AR	AR
	89/	★Liner - Cylinder		AR
12	84/92	Bolt - Main Bearing Cap	6	
	92/	★Bolt - Main Bearing Cap	10	
	86/	Bolt - Main Bearing Cap		10
TRANSDUCER - IGNITION CONTROL				
13	89/	★Transducer - Ignition Control	1	1
14	89/	★Screw - M6 x 14	1	1
<ul style="list-style-type: none"> ●Used on engines having a solid state ignition system. ★Used on engines having a distributorless ignition system. ■Used on engines having a breaker point or a solid state distributor ignition. 				



CYLINDER HEAD, VALVES AND RELATED PARTS — TYPICAL

IE-478B



VSG 411-413
67-79 CID
GASOLINE ENGINE AND POWER UNIT

REF NO.	YEAR	DESCRIPTION	QUANTITY	
			67	79
CYLINDER HEAD, VALVES AND RELATED PARTS				
1	84/86	*Head Assembly - Cylinder	1	
	86/89	●Head Assembly - Cylinder	1	
	86/89	●Head Assembly - Cylinder		1
	89/	*Head Assembly - Cylinder		1
	89/	*Head Assembly - Cylinder	1	
2	84/89	■Gasket - Cylinder Head	1	1
	89/	*Gasket - Cylinder Head	1	
	89/	*Gasket - Cylinder Head		1
3	84/89	■Bolt - Cylinder Head	10	10
	89/	*Bolt - Cylinder Head	10	10
4	84/	Dowel - Cylinder Head to Block	2	2
5	84/89	■Valve - Intake - Std.	4	
	84/89	■Valve - Intake - .38 mm O/S	A/R	
	86/89	●Valve - Intake - Std.		4
	86/89	●Valve - Intake - .38 mm O/S		A/R
	89/	*Valve - Intake - Std.	4	
	89/	*Valve - Intake - .40 mm O/S	A/R	
	89/	*Valve - Intake - Std.		4
	89/	*Valve - Intake - .40 mm O/S		A/R
6	84/89	■Valve - Exhaust - Std.	4	4
	84/89	■Valve - Exhaust - .38 mm O/S	A/R	A/R
	89/	*Valve - Exhaust - Std.	4	4
	89/	*Valve - Exhaust - .40 mm O/S	A/R	A/R
7	84/89	■Spring - Valve	8	
	86/89	●Spring - Valve		8
	89/	*Spring - Valve	8	8
8	84/89	■Seal - Valve Stem - Exhaust	4	
	84/89	■Seal - Valve Stem	4	8
	89/	*Seal - Valve Stem - Intake & Exhaust	8	8
9	84/89	■Retainer	8	8
	89/	*Retainer	8	8
10	84/89	■Lock - Valve Spring	16	16
	89/	*Lock - Valve Spring	16	16
11	84/89	■Cover - Rocker Arm	1	1
	89/	*Cover - Rocker Arm	1	1
12	84/	Gasket - Rocker Arm Cover	1	1
13	84/89	■Screw - Rocker Cover to Head	4	4
	89/	*Screw - Rocker Cover to Head	4	4
14	84/	Washer - Flat - 6mm	4	4
15	84/89	■Sender - Temperature - 230 Degrees	1	1
	89/	*Sender - Temperature - 250 Degrees	1	1
	89/	*Sender - Temperature - 275 Degrees	1	1
16	84/	Plugs - Expansion - 1.639 Dia.	1	1
17	84/	Cap - Oil Fill	1	1
18	86/89	●Insert - Exhaust Valve Seat	4	4
	89/	*Insert - Exhaust Valve Seat	4	4
19	89/	*Insert - Intake Valve Seat	4	
	89/	*Insert - Intake Valve Seat		4
20	89/	*Hose - PCV	1	1
<p>*Used on engines having a breaker point ignition system. ●Used on engines having a solid state ignition system. *Used on engines having a distributorless ignition system. ■Used on engines having a breaker point or a solid state distributor ignition.</p>				