

FL14B

crawler loader

operation and maintenance instruction manual

PRINT No. 604.00.035 - English

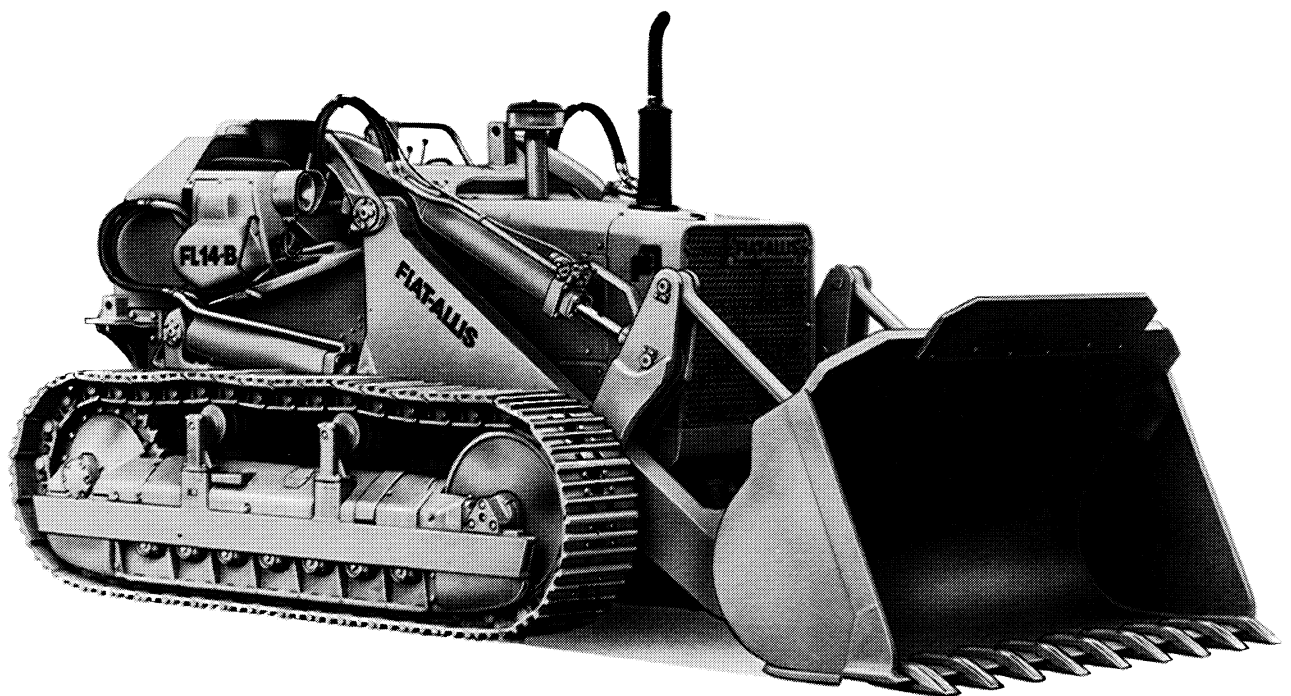


Fig. 1 – FL 14-B Crawler Loader

IDENTIFICATION DATA

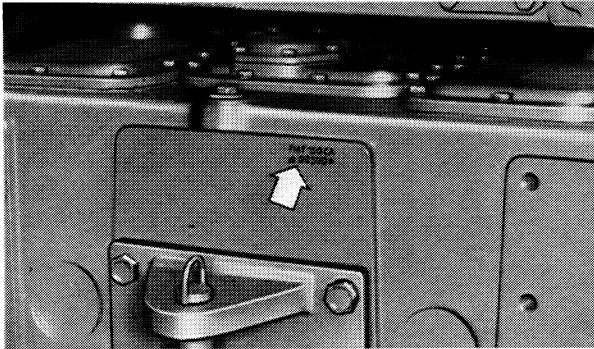


Fig. 2 – Frame Type and Number

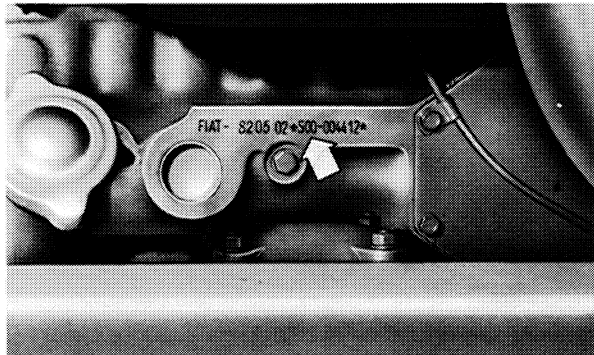


Fig. 3 – Engine Type and Number

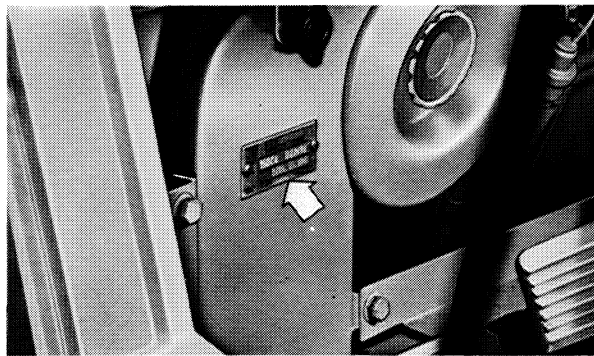


Fig. 4 – Frame and Engine Data Identification Plate

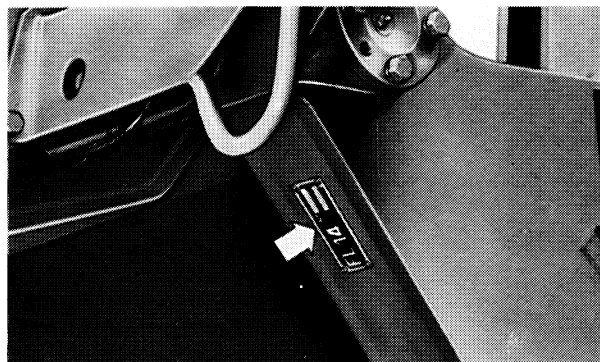


Fig. 5 – Loader Number (for the ripper, when fitted, see the plate on its frame)

SERVICE

Repairs involving major disassembly operations should be entrusted to a FIAT-ALLIS authorized Service Center where skilled personnel and suitable equipment, as well as genuine spares, are available.

The FIAT-ALLIS Service Dept. is at your full disposal for any suggestions or advice you may need should the machine develop possible operational troubles.

SPARE PARTS

To ensure perfect operation of your machine, it is essential that all worn or damaged parts be replaced with genuine FIAT-ALLIS spares.

In placing your order, please specify :

- Frame type and number.
- Engine type and number.
- Catalog part number(s) of spare(s) required.

When ordering equipment parts (loader bucket and/or ripper) indicate also the type and number of the equipment involved.

IMPORTANT

All conversions are given merely for Customer's convenience and, though the closest possible approximation is sought, they are sometimes rounded off for practical reasons.

It must therefore be understood that in case of any discrepancy the metric units are the only valid reference.

FOREWORD

This Manual was designed to serve as guidance for correct and safe operation of the machine and its systematic servicing. The continued observance of the instructions provided will ensure best possible performance, operation economy and long life of the machine and will avoid the more common causes of accidents which may occur during work or

maintenance operations is regards safety in particular read carefully the general rules given on page 4 to 11.

The repair procedures for this machine are described in separate service publications available on request from the FIAT-ALLIS Sales Organization

RUN - IN PERIOD

A minimum run-in period of 50 hours is required.
Proceed as follows :

Before driving away after starting from cold, warm up engine at idle speed for a few minutes.

Avoid prolonged full power operation.

Inspect the machine frequently, making sure there are no oil or water leaks.

During the initial period of machine operation, in addition to the routine maintenance described on page 23 you are advised to carry out the following supplementary servicing that later may be omitted or delayed to longer intervals.

Within the first 100 working hours

Change engine oil and filters.

Clean fuel bowl filter.

Clean converter/transmission oil filters.

Check the oil in track rollers and idlers (see page 36).

Within 100 and at 500 working hours

Check fuel system and valve clearance.

Change the equipment hydraulic system return filter and wash the metal filter/magnetic rod.

All the above recommendations apply also to newly overhauled machines.