

**Fiat Allis Dd Motor Grader Parts Catalog-16f17374**

Full download: <http://manualplace.com/download/fiat-allis-dd-motor-grader-parts-catalog-16f17374/>



**DD**

(Diesel)

motor grader

**parts catalog**

S/N 1 THRU 4500  
S/N 73L04501 - UP

Form 73110201 English  
(REPLACES 70669364)



**WARNING**

STUDY THE OPERATION AND MAINTENANCE  
INSTRUCTION MANUAL THROUGH BEFORE  
STARTING, OPERATING, MAINTAINING,  
FUELING OR SERVICING THIS MACHINE.

SECTION

DESCRIPTION

ENGINE OR MOTOR  
Injection  
Fuel

10-02884 Snow Blower  
10-02881  
10-02882

SECTION AND MODEL

ENGINE MOTOR

SERVICE MANUALS

ENGINE D-2

Fuel Injection  
Pump

Fuel Injection

Engine Control  
and Rear Axle

Gearing, Front Wheel  
and Wheel Axle

Tandem and Brakes  
Moldboard, Tyres  
Circle & Scarifier  
Power Steering

Hydraulic System

Electrical System  
Service Manual

10-02881  
10-02882

10-02883  
10-02884

10-02885  
10-02886

10-02881  
10-02882  
10-02883  
10-02884

10-02885  
10-02886  
10-02887  
10-02888

PUBLICATIONS AVAILABLE  
FOR  
MODEL DD MOTOR GRADER  
(See NOTE below)

DESCRIPTION

FORM NO.

<u>PARTS CATALOG</u>	<u>SERIAL NO.</u>	
DD MOTOR GRADER	All	73110201
Fuel Injection } Bosch PSB	Prior to S/N 1924	70696878
Pump } Roosa Master	S/N 1924 and up:	
	73L04501 and up	70685399
Cab Glass	All	70698502
TLD Loader	All	73033033
277-D358A Snow Plow	All	70626063

<u>OPERATION AND MAINTENANCE INSTRUCTION MANUAL</u>		
DD MOTOR GRADER	Prior to S/N 1924	70626091
	S/N 1924 thru 222	70626108
	S/N 2223 thru 2572	70630506
	S/N 2573 and up:	
	73L04501 and up	70642584

<u>SERVICE MANUALS</u>		
ENGINE D-262	S/N 1924 and up:	
	73L04501 and up	70667141
Fuel Injection } Bosch PSB	Prior to S/N 1924	70657398
Pump } Roosa Master	S/N 1924 and up:	
	73L04501 and up	70656820
Fuel Injection Nozzles	S/N 1924 and up:	
	73L04501 and up	70682797
Engine Clutch, Transmission and Rear Axle	S/N 1924 and up:	
	73L04501 and up	70667008
Steering, Front Wheels Axle and Wheel Lean	S/N 2223 and up:	
	73L04501 and up	70665105
Tandems and Brakes	All	70664028
Moldboard, Drawbar, Circle & Scarifier	S/N 2223 and up:	
	73L04501 and up	70665426
Power Steering	S/N 2573 and up:	
	73L04501 and up	70671930
Hydraulic System	S/N 2223 and up:	
	73L04501 and up	70665158
Electrical System	All	70696657
Service Manual Set	S/N 1924 thru 2222	70626153

NOTICE

ORDER FROM LOCAL FIAT-ALLIS DEALER UNLESS OTHERWISE NOTED.

SEE CONSTRUCTION MACHINERY TECHNICAL PUBLICATIONS INDEX (FORM 70658800) FOR ALL AVAILABLE PUBLICATIONS.

PUBLICATIONS INDEX (FORM 70658800) IS AVAILABLE FREE FROM YOUR DEALER.

## IMPORTANT

All parts listed herein, which have no specific usage indicated, are applicable to all models. Those parts which are used only on specific models are so indicated.

Attaching parts such as bolts, nuts, rivets, screws, washers, etc., are indented immediately following the parts which they attach.

Parts indicated with a square (□) are also available in packaged sets. Refer to section titled "PACKAGED PARTS".

The terms "right" and "left" used throughout this parts catalog are determined by facing the direction of forward travel.

The engine is mounted unconventionally with the flywheel toward the front of the machine, but all engine parts are designated in respect to the engine as it would be installed in a conventional machine with the flywheel to the rear.

## INSTRUCTIONS FOR ORDERING PARTS

At the time this parts catalog was published the listed part numbers were current. It is our policy to constantly improve our machines and therefore, part numbers and design may change. When ordering parts, verify part numbers through your dealer's parts catalog which is up to date with all latest part numbers.

Order parts from the dealer covering the local territory.

**ALWAYS GIVE THE MODEL AND SERIAL NUMBER OF MACHINE. IF PARTS ARE FOR AN ASSEMBLY WHICH HAS A MODEL AND/OR SERIAL NUMBER (SUCH AS ENGINE ASSEMBLY, PUMP ASSEMBLY), ALSO INCLUDE THIS INFORMATION.**

To obtain parts promptly, give part name and part number.

Give post office address, town, county and state where parts are to be shipped. Also specify whether material is to be shipped by freight, express or parcel post.

Confirm all telephone or telegraph orders in writing.

Parts for standard motor accessories such as generators and starting motors should be ordered from authorized Service Stations maintained by manufacturers of these units throughout the country.

No credit will be allowed on parts unless they are returned to the dealer from whom they were purchased; from there they will be returned, at the customer's expense, to the factory for inspection.

Unless claims for shortages or errors are made immediately upon receipt of goods, they will not be considered.

When broken goods are received, a full description of the damage should be made by the carrier agent on the freight bill. If this description is insisted upon, full damage can always be collected from the transportation company.

No responsibility is assumed for delay or damage to merchandise while in transit. Our responsibility ceases upon delivery of shipment to the transportation company from whom a receipt is received showing that shipment was in good condition when delivered to them; therefore, claims (if any) should be filed with the transportation company and not with Allis-Chalmers.

The right is reserved to change the construction or material of any parts where it seems desirable to do so without incurring the obligation of installing such changes on units already delivered.

*(Specifications and design subject to change without notice)*

# MODEL IDENTIFICATION

The symbol listed below is stamped in front of the model serial number on each unit.

MODEL SYMBOL	ENGINE MODEL	DESCRIPTION
DD	DD230 - Graders prior to S/N 1924  D262 - Graders S/N - 1924 and up; also Graders S/N 73L04501 and up. (Model D262 engine formerly known as DD262)	Diesel engine driven grader

## RECORD YOUR SERIAL NUMBERS BELOW

GRADER SERIAL NO. \_\_\_\_\_

ENGINE SERIAL NO. \_\_\_\_\_

## SERIAL NUMBER LOCATIONS

**MODEL SERIAL NO:** On plate attached to the right side of the frame near the operator's platform.

**ENGINE SERIAL NO:** On plate attached to right side of cylinder block.

## MODEL SERIAL NUMBER

**NOTE:** Effective in 1969, the model serial numbering system was changed. Under the prior system, models were numbered consecutively in numerals only. Thereafter models are identified by an 8-character combination of letters and numerals.

**SERIAL NUMBER**, consisting of all 8 characters must always be submitted for positive identification of your machine. This Point Cannot Be Over-emphasized.

GRADER MODEL	*SERIAL NO.	
	PRODUCT CODE	UNIT NO.
DD	73L	04501

ALPHABETICAL INDEX

Air Cleaner	68 thru 78	Fuel Filters	40 thru 48
Air Heater	80 thru 84	Fuel Injection Pump	50, 52
Batteries and Cables	232	Fuel Lines	40, 46,
Belt, drive	90, 92, 162, 196, 198, 200	Fuel Tank	38
Brake Control	120	Gauges	
Brakes		Air Restriction Indicator	76, 78
Parking	122	Ammeter	244, 245, 246
Transmission	118	Engine Oil Level	12
Wheel	138	Engine Oil Pressure	244, 245, 246
Cab	266	Engine Temperature	244, 245, 246
Cab Heater	264	Fuel Pressure	248, 249, 250
Camshaft	28	Hour Meter	251, 253
Canopy	263	Odometer	255
Chain	126	Gear Shift	112
Clutch	99 thru 101	Generator	234
Clutch Control	102	Generator Belt	90, 92
Connecting Rod	17	Hood	218, 219
Coolant Filter	97	Hood Side Plates	271
Crankshaft	16	Horn	256, 257
Cylinder Block	12	Hose Parts	6
Cylinder Head	24	Hour Meter	251, 253
Cylinder Sleeve	12	Hydraulic Controls	204 thru 212
Cylinders		Hydraulic Motor	180, 184
Brake Master	138	Hydraulic Pump and Drive	196, 198, 200
Brake Wheel	140	Injection Nozzles and Lines	53 thru 60
Moldboard Lift	190, 192	Injection Pump	50, 52
Scarifier Lift	272, 276	Instruments	244, 245, 246
Shiftable Moldboard	174	Lights	
Wheel Lean	146	Head	224, 226
Defroster Fan	261, 262	Instrument	246
Elements		Stop	224, 230
Air Cleaner	76, 78	Tail	224, 230
Coolant	97	Lights and Wiring	224, 226, 230
Engine Oil Filter	35, 36, 37	Manifold	
Fuel	45, 46, 48	Exhaust	66
Power Steering	158	Intake	66
Engine	12	Water	94, 96
Engine Clutch	99 thru 101	Moldboards	
Engine Clutch Control	102	Assembly	165 thru 174
Engine Primer	86	Circle	168, 172, 177, 180, 184
Engine Shut-off Control	61	Circle Lock	178
Fan	90, 92	Cutting Edges	165, 166
Filter		Drawbar	176, 180, 184
Coolant	97	Extensions	166
Engine Oil	34, 36, 37	Lift	190, 192
Fuel	40 thru 48	Shiftable	174
Power Steering	158	Side Shift	179
Flywheel	21, 22	Muffler	67
Frame	130	Numerical Index	278
Front Axle	142	Odometer	255
Front Wheel Lean	146, 148, 151	Oil Filter	34, 36, 37
Front Wheels	132		



ALPHABETICAL INDEX

Oil Pan	27	Tail Light	224, 230
Oil Pump	30, 32	Tandems	126
Packaged Parts	8	Thermostat	94, 96
Painting and Marking	223	Throttle Control	62, 64
Piston	17	Timing Gear Cover	18, 19, 20
Power Circle Turn	180, 184	Timing Gears	16, 28
Power Steering	158	Tire Pump	271
Power Steering Pump and Drive	162	Tires, Tubes and Rims	136
Pumps		Tools	222
Engine Oil	30, 32	Transmission	
Hydraulic Control	196, 198, 200	Assembly	105
Power Steering	162	Auxiliary Creeper	114
Tire	271	Brake	118
Water	90, 92	Housing	106
Radiator	88	Intermediate Shaft	109
Radiator Shell	218, 219	Pinion Shaft	111
Radiator Shutter	88	Reverse Shaft	108
Rain Cap	78	Top Shaft	110
Rear Axle	105, 124	Valve Mechanism	28
Rear Wheels	133	Valves	
Rocker Arms	28	Engine Oil Pressure Regulating	12
Scarifier	272, 276	Exhaust	24
Seat	220	Hydraulic Control	204 thru 212
Starting Motor	235 thru 242	Intake	24
Steering	152, 158	Water Manifold	94, 96
Switches		Water Pump	90, 92
Heater	264	Wheel Rim Adapter	135
Horn	256, 257	Wheels	132, 133
Hour Meter	251, 253	Windshield Wiper	258, 260
Light	224, 226		
Starter	235 thru 238		
Stop Light	224, 230		
Windshield Wiper	260		

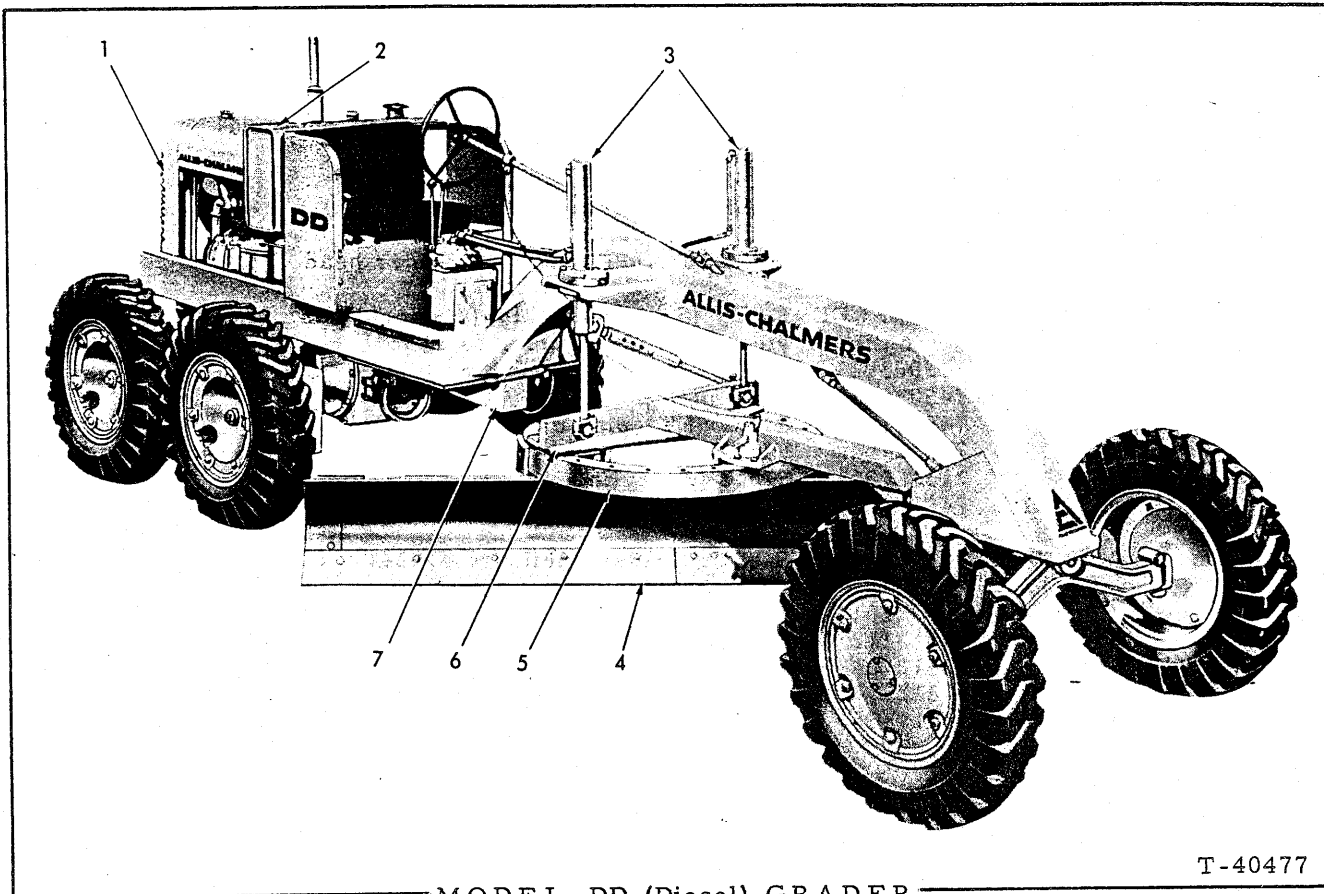
PACKAGED PARTS

PACKAGE NO.	DESCRIPTION
-----	FILTER KIT, coolant (See page 97)
70077951	GEAR SET, transmission 1     -----     SHAFT, pinion 1     -----     GEAR, bevel
74511664	GASKET KIT, cylinder block (Graders #1924 and up) 1     70923719     O-RING, oil filter base (Early units) 1     74503956     GASKET, pad cover 1     74507505     GASKET, gear cover 1     74508186     GASKET, front plate 1     74508872     O-RING, oil filter base (Early units) 1     74508941     GASKET, oil line flange 1     74513809     GASKET, air inlet housing
74511665	GASKET KIT, cylinder block (Graders prior to #1924) 1     74113897     GASKET, oil regulating valve screw 1     74501159     GASKET, pump timing hole cover 1     74506677     GASKET, timing gear cover 1     74506679     GASKET, cylinder block front plate 1     74513809     GASKET, air inlet housing
74514565	GASKET KIT, cylinder head (Graders #1924 thru #2572) 1     74001645     GASKET, water outlet pipe 2     74105451     GASKET, rocker cover nut 1     74300145     GASKET, thermostat housing 1     74500291     GASKET, water inlet pipe 1     74500802     GASKET, exhaust (Discard, Not for D grader) 1     74504562     GASKET, intake and exhaust manifolds 1     74506691     GASKET, water pump to head 6     74511204     GASKET, injection nozzle 1     74513482     GASKET, cylinder head cover 2     74513722     GASKET, water manifold, front and center 1     74513723     GASKET, water manifold, rear 1     74514398     GASKET, cylinder head
74514566	GASKET KIT, cylinder head (Graders prior to #1924) 1     74001645     GASKET, water outlet pipe 2     74105451     GASKET, cylinder head cover nut 2     74119937     GASKET (Discard. Not for D Grader) 1     74300145     GASKET, thermostat housing 1     74371110     GASKET (Discard. Not for D Grader) 2     74500291     GASKET, water inlet pipe 1     74500802     GASKET, exhaust adapter 1     74504453     GASKET (Discard. Not for D Grader) 1     74504562     GASKET, intake and exhaust manifolds 1     74506691     GASKET, water pump to head 6     74511204     GASKET, injection nozzle 1     74513482     GASKET, cylinder head cover 2     74513722     GASKET, water manifold, front and center 1     74513723     GASKET, water manifold, rear 1     74514398     GASKET, ASSEMBLY, cylinder head
74514580	GASKET KIT, cylinder head (Graders #2573 and up) 2     74105451     GASKET, rocker cover nut 1     74504562     GASKET, intake and exhaust manifold 6     74511204     GASKET, injection nozzle 1     74512212     GASKET, water pump to block

(Continued)

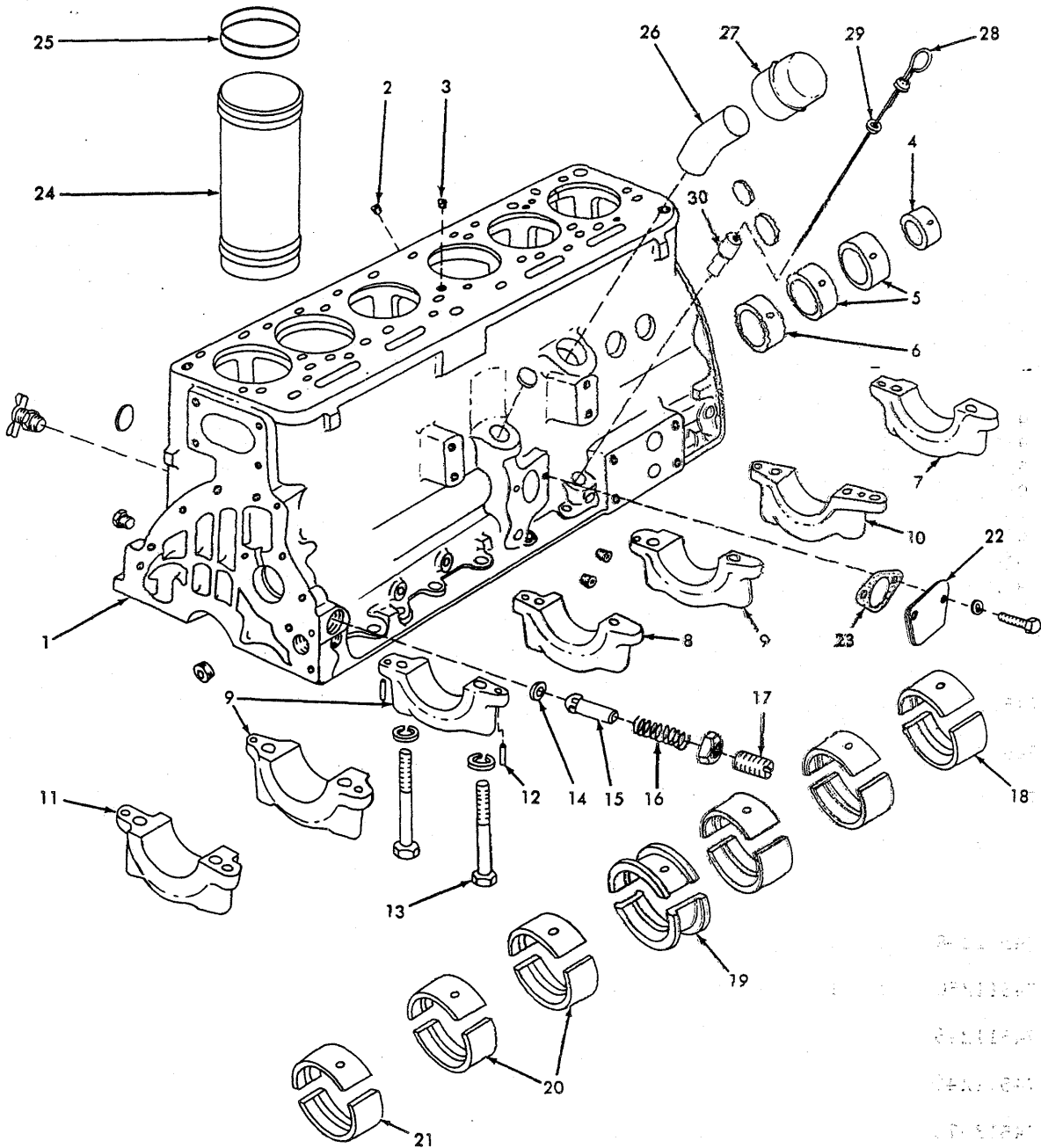
PACKAGED PARTS

PACKAGE NO.	DESCRIPTION
74514580	GASKET KIT, cylinder head (Graders #2573 and up)(Continued) 1 74513482 GASKET, cylinder head cover 1 74513527 GASKET, water outlet pipe 1 74513722 GASKET, thermostat housing 1 74513723 GASKET, water hole cover 1 74514398 GASKET ASSEMBLY, cylinder head
74514604	PISTON AND SLEEVE KIT (Same as 74514606 except has .020" thicker top flange on cylinder sleeve)(Graders prior to #1924) 2 74500301 RING, packing, cylinder sleeve 1 74502861 PIN, piston 1 74512112 RING SET, piston 1 74512764 PISTON 1 74512791 SLEEVE, cylinder 2 74514586 RETAINER, piston pin
74514606	PISTON AND SLEEVE KIT (Graders prior to #1924) 2 74500301 RING, packing, cylinder sleeve 1 74502861 PIN, piston 1 74512112 RING SET, piston 1 74512764 PISTON 1 74512774 SLEEVE, cylinder 2 74514586 RETAINER, piston pin
74515044	PISTON AND SLEEVE KIT (Graders #1924 and up) 1 74507710 PIN, piston 1 74510817 SLEEVE, cylinder 1 74513346 PISTON 2 74514586 RETAINER, piston pin 2 74514615 RING, packing, cylinder sleeve
74515045	PISTON AND SLEEVE KIT (Same as 74515044 except has .020" thicker top flange on cylinder sleeve)(Graders #1924 and up) 1 74507710 PIN, piston 1 74508465 SLEEVE, cylinder 1 74513346 PISTON 2 74514586 RETAINER, piston pin 2 74514615 RING, packing, cylinder sleeve 1 74515041 RING SET, piston
-----	REPAIR KIT, brake master cylinder (See page 137)
-----	SEAL KIT, power steering (See page 164)



- |                            |            |
|----------------------------|------------|
| 1. Radiator                | 5. Circle  |
| 2. Fuel Tank               | 6. Drawbar |
| 3. Moldboard Lift Cylinder | 7. Tandem  |
| 4. Moldboard               |            |

MEMO



— CYLINDER BLOCK —

T-40525

ENGINE  
(Not Illustrated)

ITEM	PART NO.	QTY.	DESCRIPTION
	-----	1	ENGINE ASSEMBLY (Graders prior to #2573. Not available)
1	74513652	1	ENGINE ASSEMBLY (Graders #2573 and up)

NOTE: See MAIN FRAME for engine mounting parts

CYLINDER BLOCK

\* Graders prior to serial No. 1924  
\*\* Graders serial No. 1924 thru 2572  
\*\*\* Graders serial No. 2573 and up

ITEM	PART NO.	QUANTITY			DESCRIPTION
		*	**	***	
1	74514589	1	-	-	BLOCK ASSEMBLY, cylinder
	74511319	-	1	-	BLOCK ASSEMBLY, cylinder
	74514963	-	-	1	BLOCK ASSEMBLY, cylinder
	919134	5	5	5	PLUG, pipe, hex-hd., 1/8"NPT
	919840	1	1	1	PLUG, pipe, hex-hd., 1/4"NPT
	920333	-	-	1	PLUG, pipe, hex-hd., 3/8"NPT
	904260	2	2	2	PLUG, pipe, sq-socket, 3/8"NPT
	904223	1	-	-	PLUG, pipe, sq-socket, 1/2"NPT
	917299	-	1	1	PLUG, expansion, 1-5/16" diam.
	910014	1	1	1	PLUG, expansion, 1-1/2" diam.
	912415	1	1	1	COCK, drain, 1/4"NPT

NOTE: Each BLOCK ASSEMBLY includes items 2 thru 14 and hardware indented above

2	74511159	-	-	1	PLUG, oil level gauge hole (right side)
3	74513670	-	-	1	PLUG, top deck (Engines prior to #D-06585)
4	74514025	1	1	1	BEARING, camshaft, rear
5	74514024	2	2	2	BEARING, camshaft, intermediate
6	74514023	1	1	1	BEARING, camshaft, front
7	74511248	1	1	1	*CAP, rear main bearing
8	74511250	1	1	1	*CAP, center main bearing
9	74511246	3	3	3	*CAP, intermediate main bearing (#2, #3, #5)
10	74511246	1	-	-	*CAP, intermediate main bearing (#6)
	74513575	-	1	1	*CAP, intermediate main bearing (#6)
11	74511252	1	1	1	*CAP, front main bearing
12	74514110	14	14	14	PIN, dowel, main bearing cap (standard size)
	74511822	14	14	14	PIN, dowel, main bearing cap (.030" oversize)

\*Replacement bearing caps are semi-finished and must be line-bored after installing  
(Continued)

CYLINDER BLOCK (Continued)

ITEM	PART NO.	*	**	***	DESCRIPTION
13	74500327	14	14	14	CAPSCREW, main bearing cap
	70910153	14	14	14	LOCKWASHER, 9/16"
14	74507673	1	1	1	INSERT, oil pressure regulating valve
15	74507374	1	1	1	PISTON, oil pressure regulating valve
16	74500231	1	1	1	SPRING, oil pressure regulating valve
17	74510836	1	1	1	SCREW, oil pressure regulating valve (Engines prior to to #D-15646)
	70910847	1	1	1	NUT, jam, 3/4"NF
	74113897	1	-	-	O GASKET, screw nut (Used prior to engine #100200)
	74022129	-	-	1	SCREW, oil pressure regulating valve (Engines #D-15646 and up)
18	74514858	2	2	2	BEARING, rear main (standard size)
	74514862	2	2	2	BEARING, rear main (.002" undersize)
	74514859	2	2	2	BEARING, rear main (.010" undersize)
	74514860	2	2	2	BEARING, rear main (.020" undersize)
	74514861	2	2	2	BEARING, rear main (.040" undersize)
19	74514843	2	2	2	BEARING, center main (standard size)
	74507074	2	2	2	BEARING, center main (.002" undersize)
	74514844	2	2	2	BEARING, center main (.010" undersize)
	74514845	2	2	2	BEARING, center main (.020" undersize)
	74514846	2	2	2	BEARING, center main (.040" undersize)
20	74514853	8	8	8	BEARING, intermediate main (standard size)
	74514857	8	8	8	BEARING, intermediate main (.002" undersize)
	74514854	8	8	8	BEARING, intermediate main (.010" undersize)
	74514855	8	8	8	BEARING, intermediate main (.020" undersize)
	74514856	8	8	8	BEARING, intermediate main (.040" undersize)
21	74514848	2	2	2	BEARING, front main (standard size)
	74514852	2	2	2	BEARING, front main (.002" undersize)
	74514849	2	2	2	BEARING, front main (.010" undersize)
	74514850	2	2	2	BEARING, front main (.020" undersize)
	74514851	2	2	2	BEARING, front main (.040" undersize)
22	74500332	-	1	1	COVER, fuel pump pad
	70916277	-	2	2	CAPSCREW, 5/16" NC x 5/8"
	70917330	-	2	2	WASHER, copper
23	74503956	-	1	1	O GASKET, pad cover
24	74512774	6	-	-	O SLEEVE, cylinder (3-7/16" bore)
	74512791	6	-	-	O SLEEVE, cylinder (3-7/16" bore. Has .020" thicker top flange. Requires remachining of cylinder block)
	74510817	-	6	6	O SLEEVE, cylinder (3-9/16" bore)
	74508465	-	6	6	O SLEEVE, cylinder (3-9/16" bore. Has .020" thicker top flange. Requires remachining of cylinder block)
25	74500301	12	-	-	O RING, packing, cylinder sleeve
	74514615	-	12	12	O RING, packing, cylinder sleeve

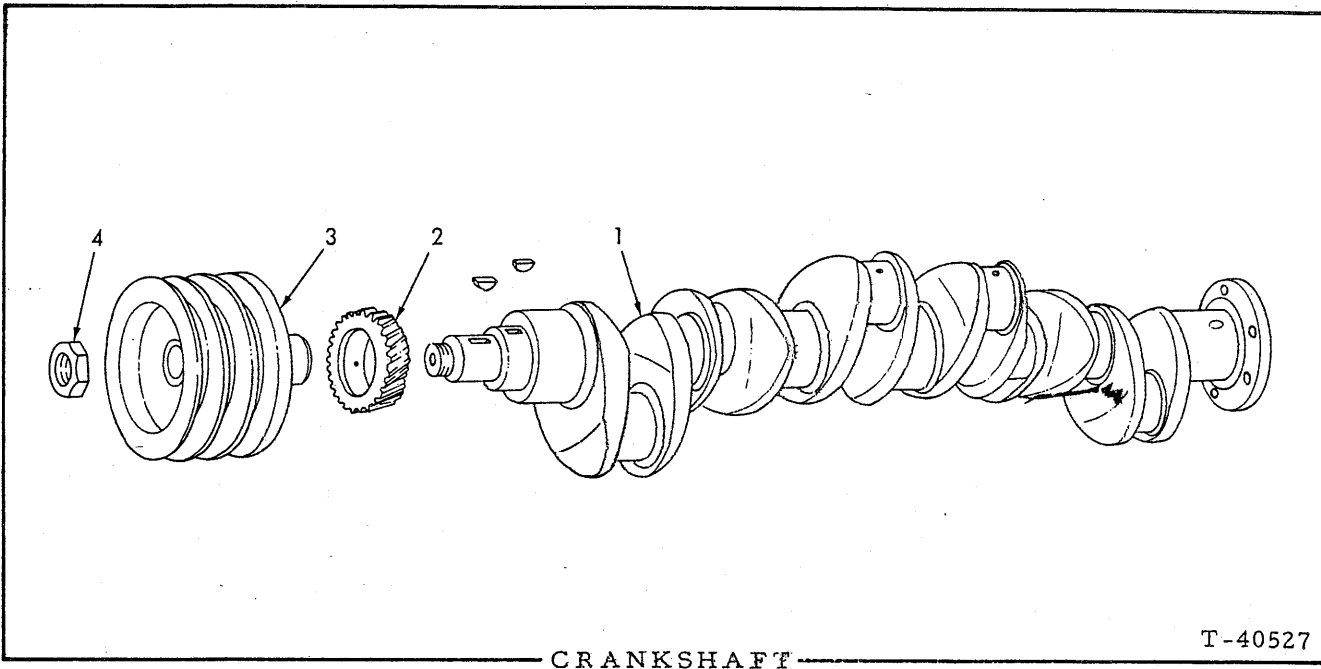
(Continued)



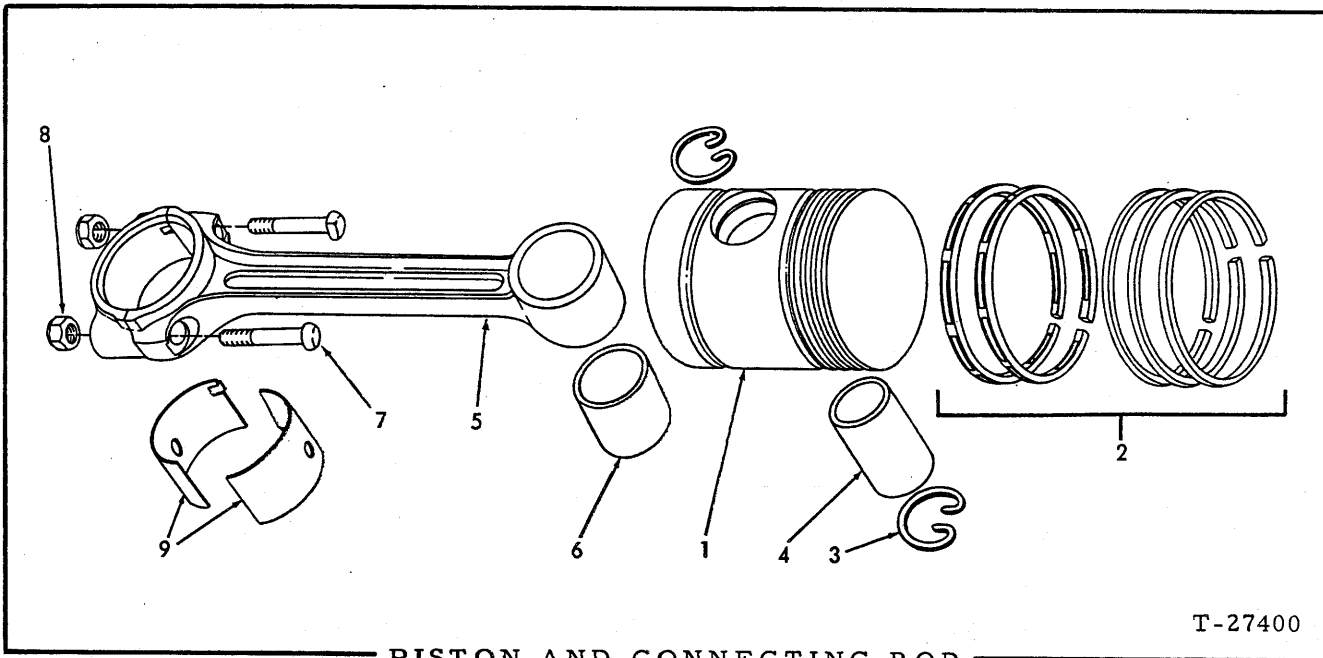
CYLINDER BLOCK (Continued)

ITEM	PART NO.	QUANTITY			DESCRIPTION
		*	**	***	
26	74504077	1	-	-	TUBE, oil filler (straight type)
	74507375	-	1	1	TUBE, oil filler (curved type)
27	74514000	1	1	1	CAP, oil filler pipe
28	74509240	1	-	-	GAUGE, oil level
	74509242	-	1	1	GAUGE, oil level
29	74506607	1	1	1	SEAL, oil level gauge
30	74506593	1	1	1	ADAPTER, oil level gauge

"ALWAYS GIVE MODEL AND SERIAL NUMBER WHEN ORDERING PARTS"



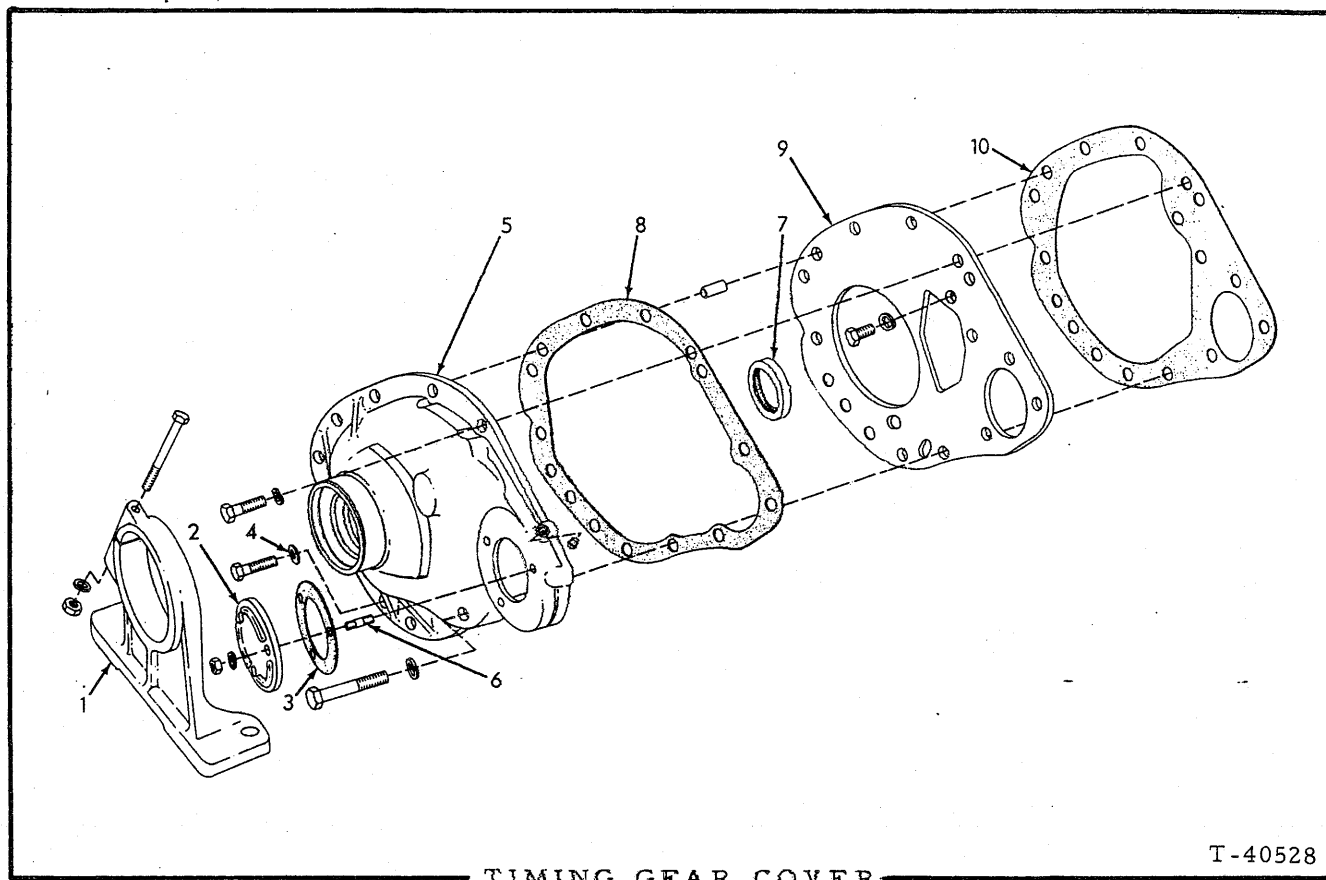
ITEM	PART NO.	QTY.	DESCRIPTION
1	74514466	1	CRANKSHAFT (Graders prior to #1924)
	74507700	1	CRANKSHAFT (Graders #1924 and up)
	70905845	2	KEY, #A woodruff, 1/4" x 7/8"
2	74511258	1	GEAR, crankshaft
3	74508265	1	PULLEY (Graders prior to #2573)
	74513666	1	PULLEY (Graders #2573 and up)
4	74512820	1	NUT, pulley retaining (self-locking)



**PISTON AND CONNECTING ROD**

\* Graders prior to serial No. 1924 (3-7/16" bore)  
 \*\* Graders serial No. 1924 and up (3-9/16" bore)

ITEM	PART NO.	QTY.		DESCRIPTION
		*	**	
1	74512764	6	-	□PISTON
	74513346	-	6	□PISTON
2	74512112	6	-	□RING SET
	74515041	-	6	□RING SET
3	74514586	12	12	□RING, snap, piston pin retaining
4	74502861	6	-	□PIN, piston
	74507710	-	6	□PIN, piston
5	74515119	6	6	ROD ASSY., connecting (Includes items 6 thru 8)
6	74507127	6	6	BUSHING, piston pin
7	74515070	12	12	BOLT, connecting rod (If for engines prior to #D-07883 also order NUT 74514471)
8	74514471	12	12	NUT, connecting rod bolt
	70900801	12	12	PIN, cotter, 3/32" x 3/4" (Engines prior to #D-07883 only)
9	74514863	12	12	BEARING, connecting rod (Standard size)
	74514867	12	12	BEARING, connecting rod (.002" undersize)
	74514864	12	12	BEARING, connecting rod (.010" undersize)
	74514865	12	12	BEARING, connecting rod (.020" undersize)
	74514866	12	12	BEARING, connecting rod (.040" undersize)



TIMING GEAR COVER

T-40528

USAGE: Graders prior to serial No. 1924

ITEM	PART NO.	QTY.	DESCRIPTION
1	74506680	1	SUPPORT, engine
	70919236	1	CAPSCREW, 1/2"NF x 4"
	70910195	1	NUT, 1/2"NF
	70904208	1	LOCKWASHER, 1/2"
2	74501158	1	COVER, injection pump timing hole
3	74501159	1	□GASKET, pump timing hole cover
4	74251367	3	WASHER, gear cover lower capscrew
5	74506705	1	COVER, timing gear
	70911081	1	PLUG, pipe, slotted-hd., 1/4"NPT
	70916271	8	CAPSCREW, 3/8"NC x 1"
	70916272	1	CAPSCREW, 3/8"NC x 1-1/4"
	70916274	1	CAPSCREW, 3/8"NC x 2-1/4"
	70904206	7	LOCKWASHER, 3/8"
6	74500847	3	STUD, pump timing hole cover
	70910233	3	NUT, 5/16"NF
	70904205	3	LOCKWASHER, 5/16"
7	74513621	1	SEAL, oil, crankshaft, front
8	74506677	1	□GASKET, gear cover
9	74506678	1	PLATE, cylinder block, front
	70917539	2	PIN, dowel, 3/8" diam. x 1" long
	70916268	2	CAPSCREW, 3/8"NC x 5/8"
	70904206	2	LOCKWASHER, 3/8"
10	74506679	1	□GASKET, cylinder block front plate