

**Parts
Catalog**



**945
WHEEL
LOADER**

S/N 79L01001-UP



FORM 73064201
(REPLACES 3060166-0)

AVOID ACCIDENTS

Most accidents, whether they occur in industry, on the farm, at home or on the highway, are caused by the failure of some individual to follow simple and fundamental safety rules or precautions. For this reason **MOST ACCIDENTS CAN BE PREVENTED** by recognizing the real cause and doing something about it before the accident occurs.

Regardless of the care used in the design and construction of any type of equipment there are many conditions that cannot be completely safeguarded against without interfering with reasonable accessibility and efficient operation.

A careful operator is the best insurance against an accident.
The complete observance of one simple rule would prevent many thousand serious injuries each year.
That rule is:

Never attempt to clean, oil or adjust a machine while it is in motion.

NATIONAL SAFETY COUNCIL

WARNING

On machines having hydraulically, mechanically, and/or cable controlled equipment (such as shovels, loaders, dozers, scrapers, etc.) be certain the equipment is lowered to the ground before servicing, adjusting and/or repairing. If it is necessary to have the hydraulically, mechanically, and/or cable controlled equipment partially or fully raised to gain access to certain items, be sure the equipment is suitably supported by means other than the hydraulic lift cylinders, cable and/or mechanical devices used for controlling the equipment.

**Parts
Catalog**

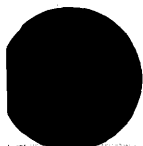


**945
WHEEL
LOADER**

S/N 79L01001-UP



FORM 73064201
(REPLACES 3060166-0)



AVOID ACCIDENTS

Most accidents, whether they occur in industry, on the farm, at home or on the highway, are caused by the failure of some individual to follow simple and fundamental safety rules or precautions. For this reason **MOST ACCIDENTS CAN BE PREVENTED** by recognizing the real cause and doing something about it before the accident occurs.

Regardless of the care used in the design and construction of any type of equipment there are many conditions that cannot be completely safeguarded against without interfering with reasonable accessibility and efficient operation.

A careful operator is the best insurance against an accident.
The complete observance of one simple rule would prevent many thousand serious injuries each year.
That rule is:

Never attempt to clean, oil or adjust a machine while it is in motion.

NATIONAL SAFETY COUNCIL

WARNING

On machines having hydraulically, mechanically, and/or cable controlled equipment (such as shovels, loaders, dozers, scrapers, etc.) be certain the equipment is lowered to the ground before servicing, adjusting and/or repairing. If it is necessary to have the hydraulically, mechanically, and/or cable controlled equipment partially or fully raised to gain access to certain items, be sure the equipment is suitably supported by means other than the hydraulic lift cylinders, cable and/or mechanical devices used for controlling the equipment.

ADDITIONAL PUBLICATIONS AVAILABLE
FOR
MODEL 945 WHEEL LOADER (S/N 79L01001)

NOTICE

Consult Fiat-Allis Construction Machinery Dealer
for Publications.

See Construction Machinery Technical Publications
List (Form 70658800) for all available Publications.

Publications Lists (Form 70658800) are available
FREE from your dealer.

(Manuals Translated In Other Languages Are Available As Indicated)

DESCRIPTION	SERIAL NO.	FORM NO.			
		ENGLISH	ESPAÑOL (Spanish)	PORTUGUÊS (Portuguese)	FRANÇAIS (French)
<u>Parts Catalogs</u>					
Cab Glass - - - - -	All	70626019			
Injection Pump - - - - -	All	70690916			
<u>Operators Manuals</u>					
945 Wheel Loader - - - - -	All	73063164	73062527	73062535	
<u>Service Manuals</u>					
Axle - - - - -	All	(a) 73060180			
Brakes - - - - -	All	(a) 73060182			
Bucket and Chassis - - - - -	All	(a) 73060184		73062541	
Electrical System - - - - -	All	(a) 73060185			
Engine - - - - -	All	(a) 70663850			
Injection Pump (Robert Bosch) -	All	70681649			
Loader Hydraulic System - - - -	All	(a) 73060183			
Power Steering System - - - - -	All	(a) 73060181			
Transmission and Torque Converter - - - - -	All	(a) 73060179			
Turbocharger - - - - -	All	(a) 70637740			
Service Manual Set - - - - -	All	73062940			

(a) Manuals so marked are included in the Service Manual Set.

IMPORTANT

All parts listed herein, which have no specific usage indicated, are applicable to all models. Those parts which are used only on specific models are so indicated.

Attaching parts such as bolts, nuts, rivets, screws, washers, etc., are indented immediately following the parts which they attach.

Parts indicated with a square (□) are also available in packaged sets. Refer to section titled "PACKAGED PARTS".

The terms "right" and "left" used throughout this parts catalog are determined by facing the direction of forward travel.

The engine is mounted unconventionally with the flywheel toward the front of the machine, but all engine parts are designated in respect to the engine as it would be installed in a conventional machine with the flywheel to the rear.

INSTRUCTIONS FOR ORDERING PARTS

Order parts from the dealer covering the local territory.

ALWAYS GIVE THE MODEL AND SERIAL NUMBER OF MACHINE. IF PARTS ARE FOR AN ASSEMBLY WHICH HAS A MODEL AND/OR SERIAL NUMBER (SUCH AS ENGINE ASSEMBLY, PUMP ASSEMBLY), ALSO INCLUDE THIS INFORMATION.

To obtain parts promptly, give part name and part number.

Give post office address, town, county and state where parts are to be shipped. Also specify whether material is to be shipped by freight, express or parcel post.

Confirm all telephone or telegraph orders in writing.

Parts for standard motor accessories such as generators and starting motors should be ordered from authorized Service Stations maintained by manufacturers of these units throughout the country.

No credit will be allowed on parts unless they are returned to the dealer from whom they were purchased; from there they will be returned, at the customer's expense, to the factory for inspection.

Unless claims for shortages or errors are made immediately upon receipt of goods, they will not be considered.

When broken goods are received, a full description of the damage should be made by the carrier agent on the freight bill. If this description is insisted upon, full damage can always be collected from the transportation company.

No responsibility is assumed for delay or damage to merchandise while in transit. Our responsibility ceases upon delivery of shipment to the transportation company from whom a receipt is received showing that shipment was in good condition when delivered to them; therefore, claims (if any) should be filed with the transportation company and not with Fiat-Allis.

The right is reserved to change the construction or material of any parts where it seems desirable to do so without incurring the obligation of installing such changes on units already delivered.

The information contained herein is general in nature and is not intended for specific application purposes. Fiat-Allis reserves the right to make changes in specifications shown herein, or add improvements, at any time without notice or obligation.

MODEL IDENTIFICATION

The symbol listed below is stamped in front of the model serial number on each unit.

MODEL SYMBOL	ENGINE MODEL	DESCRIPTION
945	25000 MK II	Turbocharged Diesel powered engine, four wheel drive loader equipped with: power shift transmission, torque converter, planetary axles, power steering and air brakes.

RECORD YOUR SERIAL NUMBERS BELOW

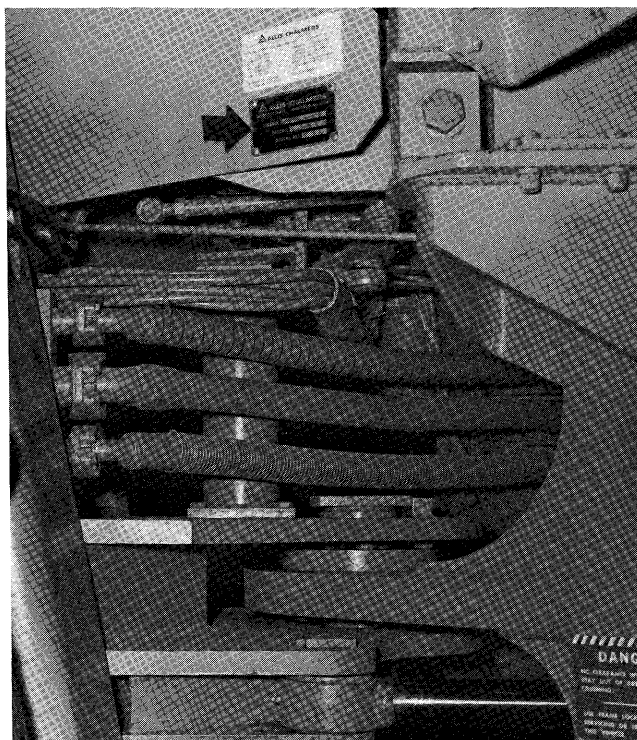
LOADER SERIAL NO. _____
 ENGINE SERIAL NO. _____
 TRANSMISSION SERIAL NO. _____

SERIAL NUMBER LOCATION

LOADER SERIAL NO: On plate attached to the left front of platform.

ENGINE SERIAL NO: On plate attached to the right hand side of the engine block.

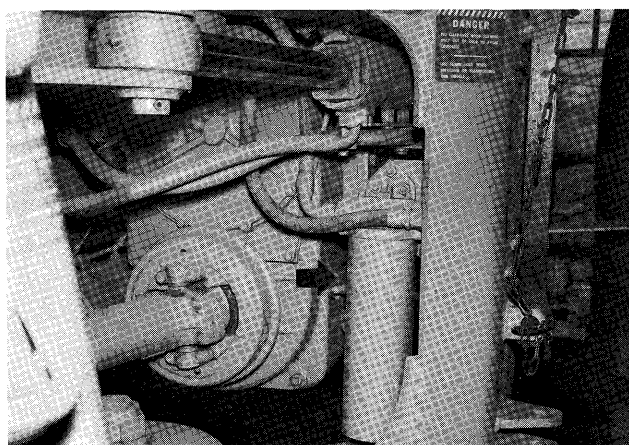
TRANSMISSION SERIAL NO: On plate attached to the left side of the transmission housing.



T-78106
LOADER SERIAL NUMBER



T-78107
ENGINE SERIAL NUMBER



T-78108
TRANSMISSION SERIAL NUMBER

MODEL SERIAL NUMBER

*SERIAL NUMBER consisting of all 8 character must always be submitted for positive identification of your machine.

LOADER MODEL	*SERIAL NO.	
	PRODUCT CODE	UNIT NO.
945	7 9 L	0 1 0 0 1

ALPHABETICAL INDEX

A		Door Assy. (Cab)	248
Accessory Drive (Engine)	26	Drive Shaft	112 - 114
Accessory Drive (Transmission)	102	Dump Cylinder Assy.	190
Additional Publications	1	Dump Cylinder Piping	192
Air Application Valve Assy.	143	E	
Air Cleaner Assy.	64	Electrical System	228
Air Cleaner Connections	62	Elements:	
Air Compressor	148	Air Cleaner	64
Air Horn and Lines	141	Fuel Filter	47 - 48
Air Relay Valve	136	Hydraulic Tank	200
Air Tank Drain Valve	137	Oil Filter	34, 36
Alcohol Injector	132	Transmission Oil Filter	110 - 111
Alcohol Injector Assy.	229, 131	Engine Breather	21
Alternator	223, 234	Engine Controls	50
Automatic Boom Kick-Out	208	Engine Front Housing	28
Automatic Bucket Leveler	206	Engine and Front Mounting	11
Air Tank and Lines	135, 138	Exhaust Manifold	55
Axle Housing and Pins (Front)	217	F	
Axle Housing and Mounting (Rear)	119	Fan	74
Axle Shaft and Hub (Front & Rear)	224	Fan Hub	75
B		Fenders	213 - 214
Batteries and Cables	226	Filters:	
Battery Covers	226	Coolant	65
Boom Kick-Out	210	Engine Oil	33, 34, 36
Brake Air Lines	124 - 135 - 138	Fuel Filter	45, 46
Brake Assy. (Front & Rear)	124	Hydraulic Tank	200
Bucket	218 - 220	Transmission Oil	110
Bucket Leveler	204	Flex Disk and Converter Drive	82
C		Flood Light Group	245
Cab and Wiper Assy.	246	Flywheel	23
Canopy	251	Flywheel Housing	22
Charging Oil Pump	103	Forward Clutch and Planetary	94
Clutch Cut-Off Valve	140	Frame	219
Compressor, Air	148	Front Air Brake Lines	135
Compressor Crankcase	149	Fuel Filter	45, 46
Compressor Cylinder Block	150	Fuel Injection Pump	40
Compressor Cylinder Head	148	Fuel Injection Lines	42
Controls:		Fuel Tank and Lines	48
Bucket & Boom	195	G	
Engine	50	Gauges	236
Parking Brake	128	Governor (Air Compressor)	151
Transmission	106	H	
Control Valve Assy. (Hydraulic)	182	Hand Rails	213
Control Valve Assy. (Transmission)	104	Heat Exchangers	66
Coolant Filter and Lines	65	Heater (Cab)	254
Coolant Pump	69	Heavy Duty Filter Lines	33
Cowl	214	Hood	214
Crankshaft	16	Hose Parts	6
Crankshaft Pulley	16	Hour Meter	229
Cylinders:		Hydraulic Controls	195
Dump	190	Hydraulic Tank	200
Lift	188	Hydraulic Oil Cooler	198
Parking Brake	130	Hydraulic Pump Assy.	178
Steering	158	Hydraulic Pump and Valve Piping	172
Wheel (Brakes)	124	Hydraulic Filter and Piping Group	175
Cylinder Block	12	High Range Clutch & Transfer Drive	97
Cylinder Head	18	I	
D		Injection Nozzle Lines	42
Dash Light Assy.	233	Injection Pump	40
Defroster Fan	245	Instrument Panel & Gauges	236
Demand Valve Assy.	157	Instrument Panel Cover & Light	238
Differential Assy. (Front & Rear)	117	Instruments & Wires	241
Differential Assy. No-Spin (Rear)	119		

ALPHABETICAL INDEX

Instrument Panel & Wiring (ROPS Cab) 244
 Intake Manifold 56

L

Ladder, Handrails & Fenders 213
 Lift Cylinder Assy. 188
 Lift Cylinder Piping 186
 Light Assy. 228 - 229 - 231 - 245
 Linkage Group 220
 Low Range Clutch & Transfer Drive. 98
 Lube Oil Filter 34, 36

M

Manifolds:
 Air 138
 Exhaust 55
 Intake 56
 Muffler 52

N

No-Spin Differential (Rear Axle). 119
 Nozzle Holder Assy. 44

O

Oil Cooler 198
 Oil Pan 38
 Oil Pump 32
 Oil Pump Lines 30
 Output Shaft 101

P

Packaged Parts. 8
 Painting and Marking 255
 Parking Brake Assy. 126
 Parking Brake Control. 128
 Pilot Control Valve. 180
 Pilot Control Valve Piping. 170
 Pilot Regulating Valve 177
 Piston and Connecting Rod. 15
 Platform 214
 Power Steering Pump 164
 Publications 1
 Pumps:
 Coolant 69
 Engine Oil. 27
 Hydraulic Main 174
 Injection. 41
 Steering 164
 Transmission Charging Oil. 103

Q

Quick Relay Valve Assy. 136

R

Radiator Assy. 79
 Radiator Support. 76 - 214
 Rear Air Brake Lines 138
 Rear Window (Cab). 250
 Reverse Clutch and Planetary. 92

S

Seat Belt 219
 Seat and Mounting 218
 Shaft and Hub. 120
 Side Panels. 211
 Starter 233

Starting Aid (Cold Weather). 53
 Steering Cylinder 158
 Steering Demand Valve. 157
 Steering Gear Assy. 168
 Steering Gear Linkage 166
 Steering Hydraulics (Pump & Valve). 160
 Steering Hydraulics (Cylinder Section) 152
 Steering Pump 164
 Steering Valve Assy. 154

T

Tail Light Assy. 232
 Tandem Steering Pump. 164
 Timing Gear Housing. 28
 Tires 221
 Transmission Assy. 80
 Transmission Charging Oil Pump 103
 Transmission Control 106
 Transmission Control Valve 104
 Transmission Filter 110 - 111
 Transmission Hoses 108
 Transmission Housing & Cover 90
 Tools 259
 Torque Converter 84
 Torque Converter Housing. 86
 Turbine Drive Gear & Freewheel Unit 88
 Turbocharger Assy. 60
 Turbocharger Connections. 59

V

Valves:
 Air Application 143
 Air Tank Drain 137
 Clutch Cut-Off 140
 Control Hydraulic. 182
 Demand 157
 Control Steering 154
 Pilot Control 180
 Pilot Regulating. 177
 Quick Relay. 136
 Transmission. 104
 Valve Operating Mechanism. 24
 Vandalism Protection Parts 257

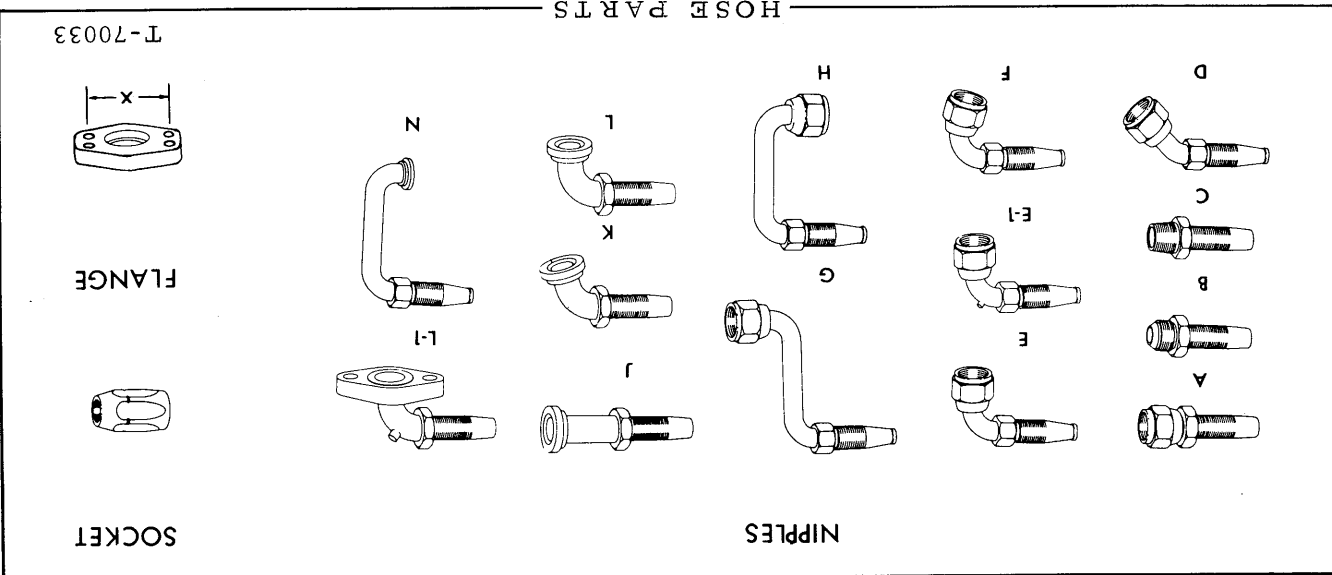
W

Water Inlet Manifold. 66
 Water Outlet Manifold 72
 Wheel. 225
 Wiper Group 252

*Includes 27" of hose guard 70927480

ORIGINAL HOSE ASSY. NUMBER	BULK HOSE LENGTH (25' Roll) (inches)	NIPPLE (#1 end)	ASSY. NO. NIPPLE (w/socket) only	SOCKET
70675105	70922345 54-7/8	70919081 E	70920303 A	70919076 A
70676063	70921335 75-1/2	70925735 A	70925735 A	
70673676	70920731 42-1/2	70924630 J	70924172 K	70922391 K
70682027	70920720 12-5/8	70920805 A	70920805 A	
70684886	70928126 59-1/2	70928109 E	70928099 A	70928087 A
70684887	70928126 61-1/4	70928109 E	70928099 A	70928087 A
70684888	70928126 57-1/4	70928109 E	70928099 A	70928087 A
70688910	70919474 39-1/2	70919473 E	70921046 A	70919469 A
70689183	70920221 47-1/2	70920344 A	70921042 E	70919281 E
70689185	70926724 66-5/8		70925805 A	
70689314	70919474 60-1/2	70919473 E	70921046 A	70919469 A
*70689817	70920733 34	70930256 J	70930256 J	70923275 J
70689818	70920733 50	70930256 J	70930257 K	70923275 K
74393684	70928126 39-1/2	70928099 A	70928331 L	70928087 L
74393686	70928126 30-1/4	70929123 K	70928331 L	70928087 L
74393688	70928126 25	70928099 A	70928099 A	70928087 A
74393694	70928123 17-1/2	70928107 E	70928097 A	70928085 A
74394398	70928120 14-3/4	70930348 E	70928094 A	70928082 A
73062469	70920221 26-7/16	70920344 A	70920344 A	70919281 A
73062470	70920221 40-1/4	70919277 E	70919277 E	70919281 E
74393692	70928123 16-3/4	70928107 E	70928097 A	70928085 A

NOTE: Refer to left hand column for identity of original hose. Hose is crimped-type (fitting not re-usable) unless otherwise noted. Equivalent hose assembly may be constructed from data indicated.



PACKAGED PARTS

PACKAGED NO.	DESCRIPTION
-----	REPAIR KIT, alcohol injector (See ALCOHOL INJECTOR ASSY.)
-----	REPAIR KIT, cylinder (See DUMP CYLINDER)
-----	REPAIR KIT, cylinder (See LIFT CYLINDER)
-----	REPAIR KIT, cylinder (See POWER STEERING CYLINDER)
-----	REPAIR KIT, brake (See BRAKE AND AIR CHAMBER)
-----	REPAIR KIT, valve (See AIR APPLICATION VALVE)
-----	LINING KIT (See BRAKE AND AIR CHAMBER)
-----	DECAL KIT (See PAINTING AND MARKING)
-----	RING SET, piston (See PISTON AND CONNECTING ROD)
-----	REPAIR KIT, pump (See WATER PUMP)
73062193	SEAL AND GASKET KIT, model TRT Transmission (2-speed forward, 2-reverse)(Also order 1 PLASTIC SEALANT - 70927939)

1	70194585	RING
2	70194679	SEAL, oil
2	70924944	NUT
24	73021041	NUT
1	73021056	GASKET
1	73021058	RING, seal
1	73026156	SEAL, oil
1	73035714	RING
1	73035745	RING, seal
1	73063376	SEAL, oil
1	73042146	KIT, seal and expander
8	73044460	TAB, locking
3	73044474	GASKET
1	73044485	GASKET
2	73044489	GASKET
2	73047668	RING, seal
1	73047698	GASKET
1	73047701	KIT, seal and expander
1	73047720	KIT, seal and expander
2	73047724	RING, seal
1	73047741	GASKET
1	73048782	GASKET
1	73058793	RING, seal
1	73062025	RING, seal
1	73062026	RING, seal
2	73062027	RING, seal
1	73062031	GASKET
1	73062032	GASKET
2	73062043	O-RING
1	73062051	RING, seal
1	73062067	RING, seal
1	73062134	SEAL

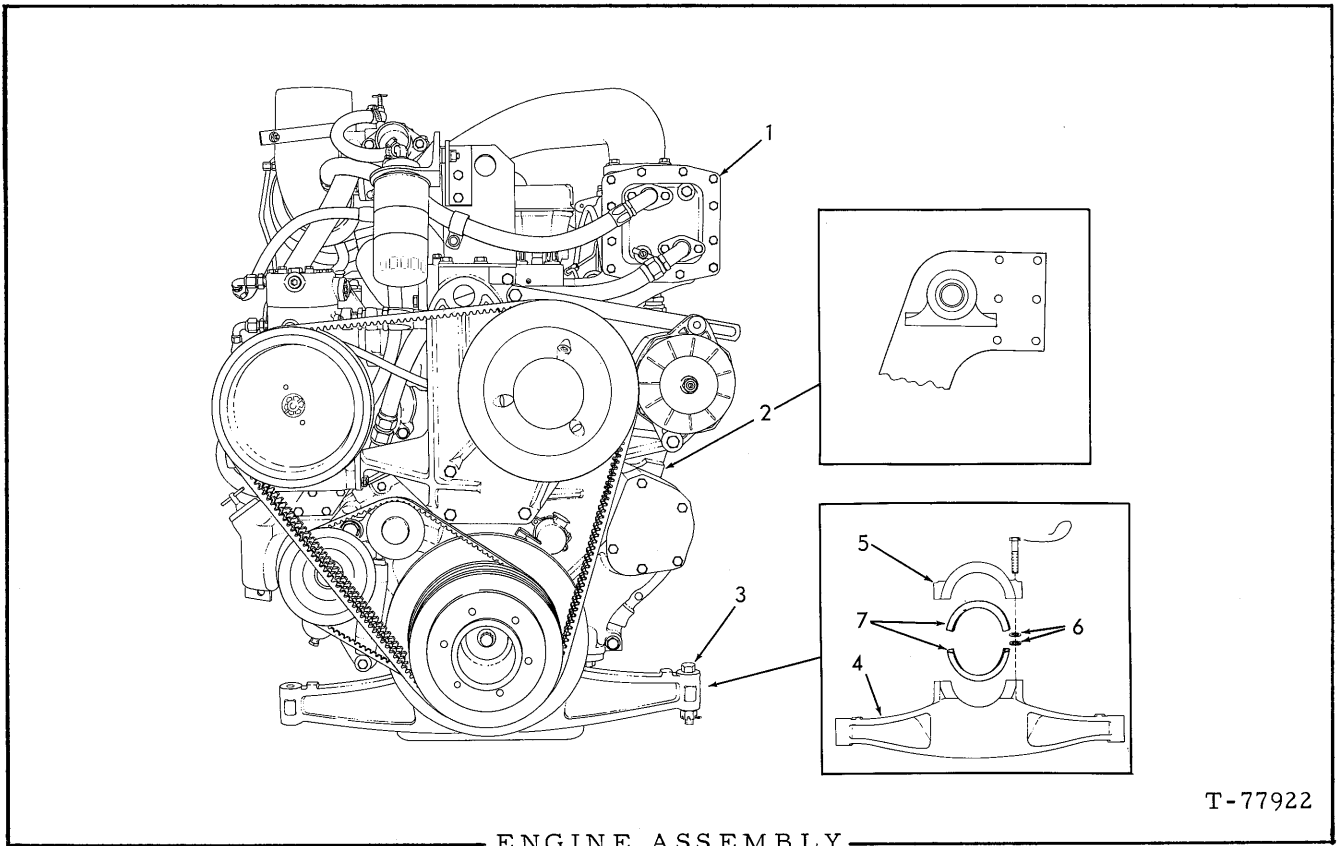
PACKAGED PARTS (Continued)

PACKAGE NO.	DESCRIPTION
74387007	GASKET SET, turbocharger mounting (See TURBOCHARGER)
74394432	GASKET SET, engine cylinder head
8	74254873 WASHER, rocker cover capscrew
8	74255956 SLEEVE, fuel line (rubber)
1	74361551 GASKET, air intake elbow
6	74376483 GASKET, water manifold
1	74376520 GASKET, thermostat housing cover
6	74378031 GASKET, nozzle
1	74386137 GASKET, thermostat by-pass tube
12	74387697 GASKET, intake and exhaust manifold
2	74389961 GASKET, cylinder head cover (upper)
2	74394426 GASKET ASSY., cylinder head (Includes Instruction Sheet)
1	74391707 GASKET, air inlet
1	74392279 GASKET, manifold connecting
2	74393989 GASKET, cylinder head cover (lower)
74394034	GASKET KIT, intermediate, engine cylinder block (Does not include cylinder head or oil pan gaskets)
2	70667252 GASKET, drain plug
8	70923379 O-RING, water tube
1	70923575 O-RING, idler pin
8	70923645 O-RING, injection pump line
2	70923651 O-RING, bonnet tube
2	70923810 O-RING, dowel
1	70923813 O-RING, idler gear pin
5	70923934 O-RING
1	70923935 O-RING, water pump flange
1	70923936 O-RING, cam
12	70925612 O-RING, water inlet manifold
2	74113897 GASKET, cap nut
4	74119937 GASKET, plugging capscrews
5	74255511 O-RING, heat exchanger/oil filter
2	74255513 O-RING, oil filter
12	74255631 O-RING, oil cooler
4	74255665 O-RING, fuel pump bracket
2	74255781 O-RING, heat exchanger elbow
1	74255898 O-RING
1	74255904 O-RING
1	74255912 O-RING, flywheel
1	74310257 GASKET, oil filler pipe
1	74336897 O-RING, flywheel housing
1	74361740 GASKET, idler support
1	74367090 GASKET, tachometer hole nut
1	74371027 GASKET, gear housing hole cover
2	74371160 GASKET, heat exchanger
1	74371289 GASKET, oil pan cover
3	74371345 GASKET, oil tube
1	74371742 GASKET, cover
1	74376398 GASKET, water pump
1	74376603 GASKET, accessory drive
1	74376609 GASKET, gear housing cover
7	74376749 WASHER, push rod cover capscrew
2	74377120 GASKET, push rod cover
2	74378112 GASKET, lower by-pass flange
1	74379070 SEAL, oil pan
1	74385317 GASKET, water manifold
1	74385320 GASKET, bonnet
1	74386223 GASKET, bonnet

(Continued)

PACKAGED PARTS (Continued)

PACKAGE NO.	DESCRIPTION	
74394034 (Cont'd)	1	74386495 GASKET, water and oil manifold, lower
	1	74386856 GASKET, heat exchanger
	1	74387525 GASKET, cover
	1	74389291 GASKET, water and oil manifold, upper
	1	74389635 GASKET
	1	74389676 GASKET, heat exchanger
	1	74389678 GASKET, heat exchanger
	3	74389782 GASKET, oil tube
	1	74390432 GASKET, housing cover
	4	74393359 GASKET, oil lines
	1	74660423 GASKET, oil line
	1	74660492 GASKET, gear housing
-----		RING SET, engine, piston (See PISTON AND CONNECTING ROD)
74394054		SLEEVE KIT, engine (with piston)
	2	74253749 RETAINER, piston pin
	1	74385485 RING, packing (red)
	1	74390175 PIN, piston
	1	74391473 SLEEVE, cylinder
	1	74393303 PISTON
	2	74393426 RING, packing (black)
	1	74394053 RING SET, piston (See above)

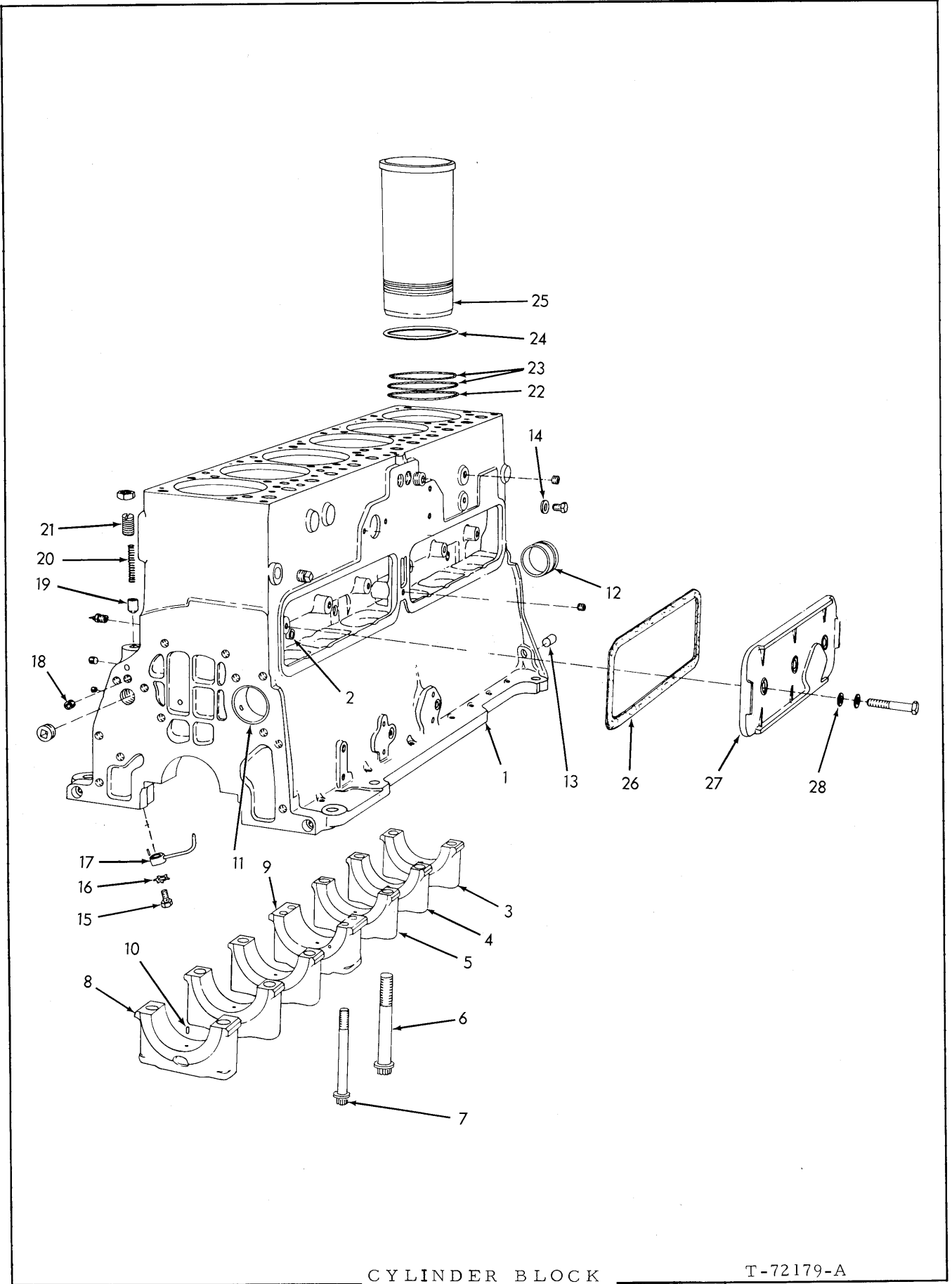


T-77922

ENGINE ASSEMBLY

ITEM	PART NO.	QTY.	DESCRIPTION
1	74393795	1	ENGINE ASSY., Model 25000 Mark II
NOTE: Engine includes Coolant Filter, Turbocharger, Fuel Pump, Fuel Filters, Lub. Oil Filters, Air Compressor and Alternator; but does not include Fan, Air Cleaner or Starter.			
2	-----	2	BRACKET, rear (See TRANSMISSION ASSY.)
3	70925740	2	CAPSCREW, 5/8" NF x 4"
	70916589	2	NUT, locking, 5/8" NF
4	70655452	1	HANGER ASSY. front (Includes item 5)
5	-----	1	CAP (Not serviced separately)
	74394312	2	CAPSCREW, nylok, 1/2" NC x 3"
	74374018	1	LOCKWIRE
6	70916009	14	WASHER, shimming (1/32" thick) (Use as required)
7	74336491	2	LINER

"ALWAYS GIVE MODEL AND SERIAL NUMBER WHEN ORDERING PARTS"



CYLINDER BLOCK

T-72179-A

CYLINDER BLOCK

ITEM	PART NO.	QTY.	DESCRIPTION
1	74394346	1	BLOCK ASSY. (Includes items 2 thru 14, 18 and hardware indented below)
	70919840	3	PLUG, hex-hd., 1/4" NPT
	70920333	1	PLUG, hex-hd., 3/8" NPT
	70918887	1	PLUG, hex-ckt. 3/8" NPT
	70917673	3	PLUG, hex-ckt. 1/8" NPT
	70918850	3	PLUG, hex-ckt. 1/4" NPT
	70918851	4	PLUG, hex-ckt. 3/4" NPT
	74255363	1	COCK, drain, 1/4" NPT
2	-----	4	DOWEL (See VALVE OPERATING MECHANISM)
3	74389235	1	* CAP
4	74389232	1	* CAP
5	74389234	1	* CAP
6	74393397	12	CAPSCREW, 7/8" diam.
7	74391307	4	CAPSCREW, 5/8" diam.
8	74389231	1	* CAP
9	74393636	1	* CAP
	-----	4	PIN (See CRANKSHAFT)
10	74389292	7	PIN
11	{ 74665306	1	BEARING, camshaft, front
	{ 74393373	2	BEARING, camshaft, intermediate
12	74665306	1	BEARING, camshaft, rear
13	-----	2	PIN (See FLYWHEEL AND HOUSING)
14	74119937	3	□ WASHER (Copper)
	70919229	3	CAPSCREW, 1/2" NC x 1/2"
15	{ 70922205	6	CAPSCREW, 5/8" NF x 1/2" (Included in BLOCK ASSY. for shipping purposes; remove and replace with jet retaining screw)
	{ 74386262	6	SCREW, jet retaining (Not included in service BLOCK ASSY.)
16	{ 74373619	6	LOCKWASHER, 5-tang (Included in BLOCK ASSY. for shipping purposes; remove and replace with jet retaining screw lock-washer)
	{ 74255186	6	LOCKWASHER, jet retaining screw (Not included in service BLOCK ASSY.)
17	{ 74390766	3	JET ASSY., right hand (Includes DOWEL PIN indented below)
	{ 74390767	3	JET ASSY., left hand (Includes DOWEL PIN indented below)
	70917558	6	PIN, dowel, 1/8" x 1/2"
18	74389943	1	RESTRICTOR, oil pressure by-pass

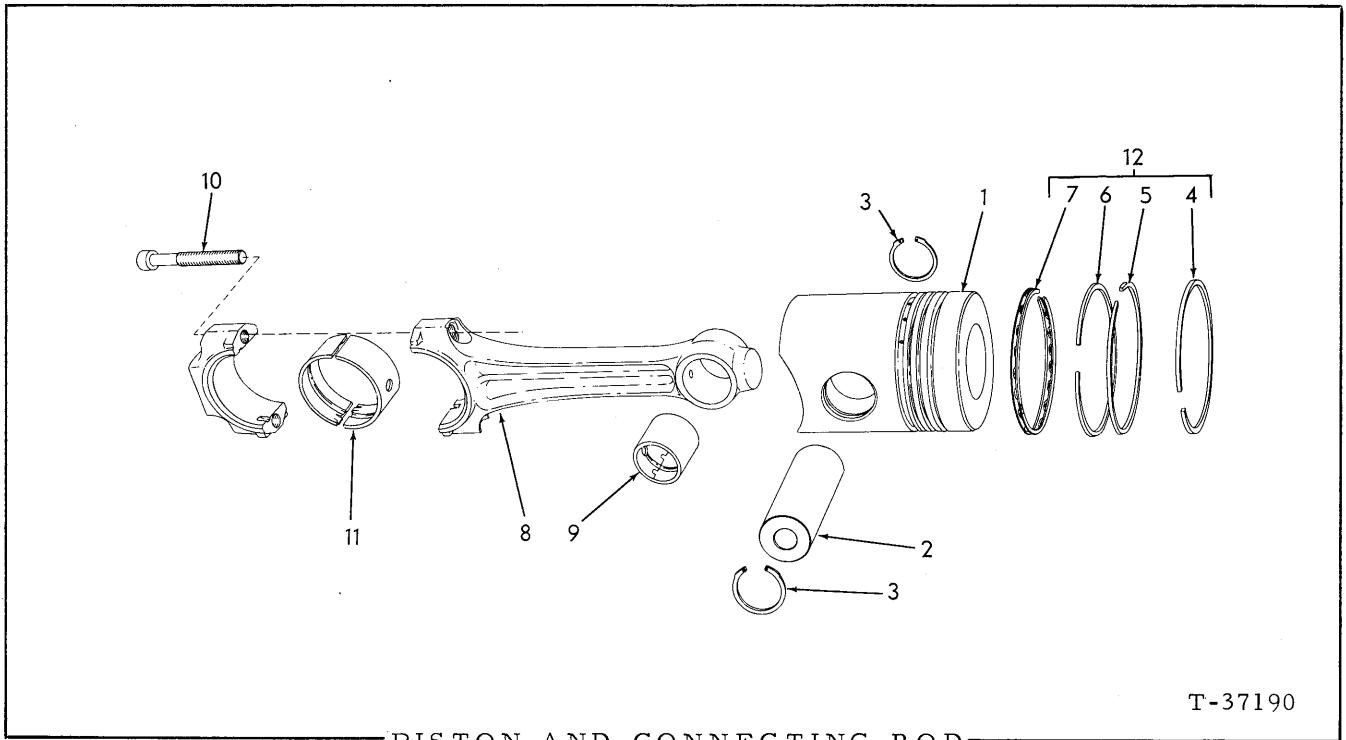
(Continued)

CYLINDER BLOCK (Continued)

ITEM	PART NO.	QTY.	DESCRIPTION
19	74500230	1	PISTON
20	74660358	1	SPRING
21	74389058	1	SCREW (Nylok)
	70910847	1	NUT, jam, 3/4" NF
22	74385485	6	□ O-RING, lower (red)
23	74393426	12	□ O-RING, upper (black)
24	74368204	-	SHIM (.005" thick)
	74368205	-	SHIM (.010" thick)
	74368206	-	SHIM (.015" thick)
	74369002	-	SHIM (.020" thick)
			Use as required when remachining block
25	74391473	6	□ SLEEVE
26	74377120	2	□ GASKET
27	74393853	2	COVER
	70916316	6	CAPSCREW, 1/2" NC x 2-1/2"
28	74376749	7	□ WASHER
-	74061528	6	SLEEVE KIT (Consists of 1 O-RING 74385485, 2 O-RING 74393426 and 1 SLEEVE 74391473)

*Replacement bearing caps are semi-finished and must be line-bored after installing.

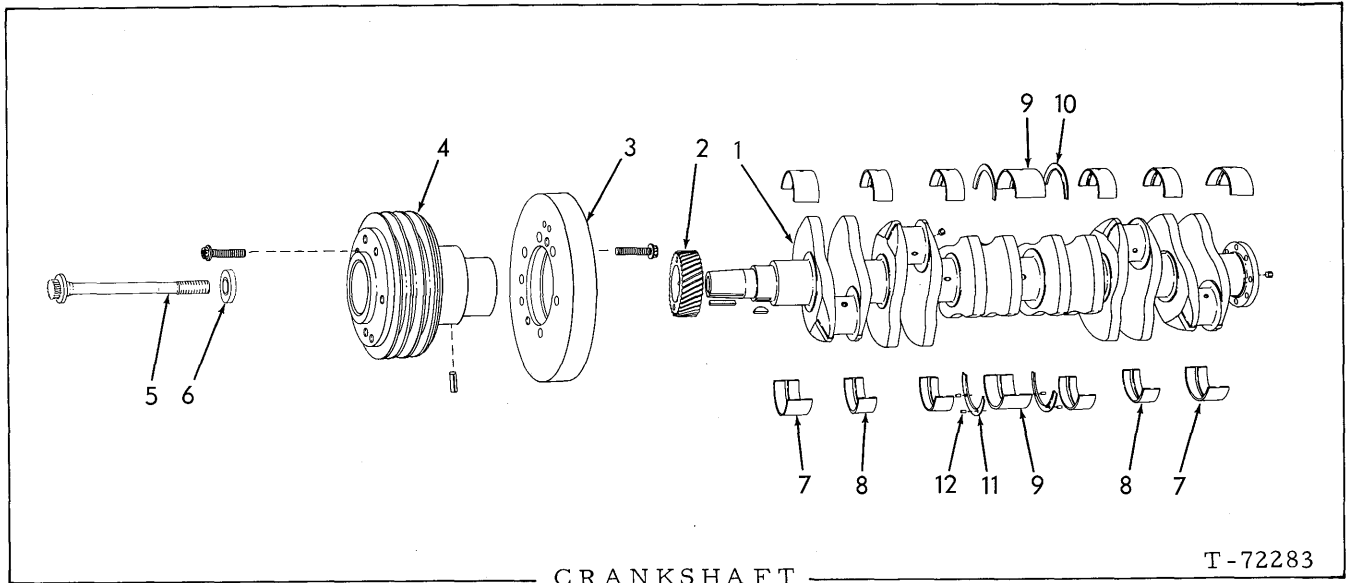
□ (Also see PACKAGED PARTS)



PISTON AND CONNECTING ROD

T-37190

ITEM	PART NO.	QTY.	DESCRIPTION
1	74393303	6	□ PISTON
2	74390175	6	□ PIN
3	74253749	12	□ RETAINER
4	-----	6	RING (Top groove)
5	-----	6	RING (2nd groove)
6	-----	6	RING (3rd groove)
7	-----	6	RING (4th groove)
8	74394058	6	ROD ASSY. (Includes items 9 and 10)
9	74376986	6	BUSHING,
10	74392024	12	CAPSCREW
11	74390698	12	BEARING (Standard size)
	74391156	12	BEARING (.010" undersize)
	74391157	12	BEARING (.020" undersize)
	74391158	12	BEARING (.030" undersize)
	74391159	12	BEARING (.040" undersize)
12	74394053	6	□ RING SET (For 1 piston only)(Includes 1 each items 4 thru 7)
-	74061548	6	PISTON KIT (Consists of one each items 1, 2, 12 and 2 RETAINER 74253749) □(Also see PACKAGED PARTS)



ITEM	PART NO.	QTY.	DESCRIPTION
1	74393322	1	CRANKSHAFT KIT (Replaces production no.74391953)
2	74389052	1	GEAR
	70905129	1	KEY, "D" woodruff, 5/16" x 1-1/4"
3	74390413	1	DAMPER
	74391022	6	BOLT, place (1/2" NC x 1-3/8")
4	74393664	1	PULLEY ASSY. (Includes PIN indented below)
	70921839	1	PIN, roll, 5/16" x 1-3/8"
5	74393443	1	CAPSCREW, 3/4" NC x 7-1/4"
6	74393436	1	WASHER
7	74387031	4	BEARING, front and rear main (Std. size)
	74386480	4	BEARING, front and rear main (.010" undersize)
	74386481	4	BEARING, front and rear main (.020" undersize)
	74386482	4	BEARING, front and rear main (.030" undersize)
	74386483	4	BEARING, front and rear main (.040" undersize)
8	74387032	8	BEARING, intermediate main (Std. size)
	74386473	8	BEARING, intermediate main (.010" undersize)
	74386474	8	BEARING, intermediate main (.020" undersize)
	74386475	8	BEARING, intermediate main (.030" undersize)
	74386476	8	BEARING, intermediate main (.040" undersize)
9	74387033	2	BEARING, center main (Std. size)
	74386469	2	BEARING, center main (.010" undersize)
	74386466	2	BEARING, center main (.020" undersize)
	74386467	2	BEARING, center main (.030" undersize)
	74386468	2	BEARING, center main (.040" undersize)
10	74386360	2	FLANGE, thrust, center main, upper (Std. size)
	74386456	2	FLANGE, thrust, center main, upper (.005" oversize)
	74386457	2	FLANGE, thrust, center main, upper (.010" oversize)
	74386458	2	FLANGE, thrust, center main, upper (.015" oversize)

(Continued)