

745H-B

wheel loader

parts catalog

S/N 72C02901 - UP

S/N 62Y02901 - UP

Form 73066640 English

(REPLACES 73061824)



WARNING

STUDY THE OPERATION AND MAINTENANCE
INSTRUCTION MANUAL THROUGH BEFORE
STARTING, OPERATING, MAINTAINING,
FUELING OR SERVICING THIS MACHINE.

ADDITIONAL PUBLICATIONS AVAILABLE

FOR

MODEL 745H-B WHEEL LOADER (S/N 72C02901 & 62Y02901)

Consult your Fiat-Allis Construction Machinery dealer for other publications. See Construction Machinery Technical Publications List (Form 70658800) for all available Publications. Publications List (Form 70658800) is available FREE from your dealer.

DESCRIPTION	FORM NO.					
	ENGLISH	ESPAÑOL (Spanish)	PORTUGUÊS (Portuguese)	FRANÇAIS (French)	DEUTSCH (German)	ITALIANO (Italian)
<u>Parts Catalogs</u>						
Cab Glass -----	70698502	-----	-----	-----	-----	-----
Injection Pump						
Roosa -----	*70685399	-----	-----	-----	-----	-----
Robert Bosch -----	**70698576	-----	-----	-----	-----	-----
Loader -----	73066640	-----	-----	-----	-----	-----
<u>Operation & Maintenance</u>						
Instruction Manual	73064866	-----	-----	73061854	73062989	73062984
<u>Service Manuals</u>						
Axle -----	(a)73053547	73061828	-----	73061841	-----	-----
Brakes & Air System -	(a)73063659	73061838	-----	73061851	73063302	-----
Bucket & Chassis ----	(a)73055458	73061830	-----	73061843	-----	-----
Electrical System ---	(a)73063024	-----	-----	-----	-----	73063291
Engine -----	(a)70645121	-----	-----	-----	-----	-----
Fuel Injection Nozzle -	70682797	-----	-----	-----	-----	-----
Fuel Injection Pump						
Roosa -----	*70656820	-----	-----	-----	-----	-----
Robert Bosch -----	**70681649	-----	-----	-----	-----	-----
Loader Hydraulic						
System -----	(a)73059681	73061829	-----	-----	-----	-----
Power Steering System	(a)73055601	-----	-----	73061852	73063303	73063290
Service Tools -----	70650850	-----	-----	-----	-----	-----
Transmission and						
Torque Converter -	(a)73062168	73061837	-----	73061850	73063301	-----
Turbocharger -----	(a)70677064	70678570	-----	-----	-----	-----
Service Manual Set --	73063047	-----	-----	-----	-----	-----

* Effective with engine s/n 11-24213

** Used prior to engine s/n 11-24213

(a) Manuals included in English service manual set.

IMPORTANT

All parts listed herein, which have no specific usage indicated, are applicable to all models. Those parts which are used only on specific models are so indicated.

Attaching parts such as bolts, nuts, rivets, screws, washers, etc., are indented immediately following the parts which they attach.

Parts indicated with a square (□) are also available in packaged sets. Refer to section titled "PACKAGED PARTS"

The terms "right" and "left" used throughout this parts catalog are determined by facing the direction of forward travel.

The engine is mounted unconventionally with the flywheel toward the front of the machine, but all engine parts are designated in respect to the engine as it would be installed in a conventional machine with the flywheel to the rear.

INSTRUCTIONS FOR ORDERING PARTS

Order parts from the dealer covering the local territory.

ALWAYS GIVE THE MODEL AND SERIAL NUMBER OF MACHINE. IF PARTS ARE FOR AN ASSEMBLY WHICH HAS A MODEL AND/OR SERIAL NUMBER (SUCH AS ENGINE ASSEMBLY, PUMP ASSEMBLY), ALSO INCLUDE THIS INFORMATION.

To obtain parts promptly, give part name and part number.

Give post office address, town, county and state where parts are to be shipped. Also specify whether material is to be shipped by freight, express or parcel post.

Confirm all telephone or telegraph orders in writing.

Parts for standard motor accessories such as generators and starting motors should be ordered from authorized Service Stations maintained by manufacturers of these units throughout the country.

No credit will be allowed on parts unless they are returned to the dealer from whom they were purchased; from there they will be returned, at the customer's expense, to the factory for inspection.

Unless claims for shortages or errors are made immediately upon receipt of goods, they will not be considered.

When broken goods are received, a full description of the damage should be made by the carrier agent on the freight bill. If this description is insisted upon, full damage can always be collected from the transportation company.

No responsibility is assumed for delay or damage to merchandise while in transit. Our responsibility ceases upon delivery of shipment to the transportation company from whom a receipt is received showing that shipment was in good condition when delivered to them; therefore, claims (if any) should be filed with the transportation company and not with Allis-Chalmers.

The right is reserved to change the construction or material of any parts where it seems desirable to do so without incurring the obligation of installing such changes on units already delivered

The information contained herein is general in nature and is not intended for specific application purposes. Allis-Chalmers reserves the right to make changes in specifications shown herein, or add improvements, at any time without notice or obligation.

MODEL IDENTIFICATION

The symbol below is stamped in front of the model serial number on each unit.

MODEL SYMBOL	ENGINE MODEL	DESCRIPTION
745H-B	11000	Turbocharged Diesel powered engine, four wheel drive loader equipped with: power shift transmission, torque converter, planetary axles, power steering and power brakes.

SERIAL NUMBER LOCATIONS

LOADER SERIAL NO: Stamped on left side of rear frame on battery box.

ENGINE SERIAL NO: On plate attached to the left hand side of the engine block.

TRANSMISSION SERIAL NO: On plate attached to the left side of the transmission housing.

AXLE SERIAL NO: On plate attached to the axle housing.

RECORD YOUR SERIAL NUMBERS BELOW

(See page 9)

WHEEL LOADER SERIAL NO. _____

ENGINE SERIAL NO. _____

TRANSMISSION SERIAL NO. _____

AXLE SERIAL NO. _____

MODEL SERIAL NUMBER

*SERIAL NUMBER consisting of all 8 characters must always be submitted for positive identification of your machine.

LOADER MODEL	*SERIAL NO.	
	PRODUCT CODE	UNIT NO.
745H-B	72 C	02901
	62 Y	02901

ALPHABETICAL INDEX

A

Accessory Drive -----	112
Air Application Valve Assy. ----	154
Air Brake Lines -----	152
Air Cleaner -----	81
Air Cleaner Connections -----	79
Air Compressor -----	166, 173
Air Horn -----	151
Air Horn & Lines -----	150
Air Tank Drain Valve -----	157
Air Tank & Lines -----	158
Alcohol Injector -----	162
Alcohol Injector Assy. -----	163
Alternator -----	272, 273
Alternator & Mounting -----	273
Axle Assy. -----	130
Axle Housing & Pins (front) ----	133
Axle Housing & Mounting(rear) --	136
Axle Disconnect Control -----	116

B

Batteries & Cables -----	257
Battery Covers -----	259
Boom -----	249
Boom Kick Out (hydraulic) ----	204
Boom Kick Out (single lever control) -----	201
Brake Air Lines -----	152
Brake Assy. (front & rear) ----	137
Brake Hydraulic Lines (front) ---	144
Brake Assy. (parking) -----	139
Brake Hydraulic Lines (rear) --	146
Breather, Engine -----	25
Bucket -----	248
Bucket (multi-purpose) -----	251
Bucket Cylinder Assy. -----	255
Bucket Hydraulics -----	253
Bucket Leveler -----	208
Bucket Leveler (single lever control) -----	212
Bucket Level & Position Indicator -----	207

C

Cab Heater -----	285
Camshaft -----	29
Cab & Wiper Assy. -----	278
Canopy Assy. (ROPS) -----	283
Charging Oil Pump -----	113
Clutch Cut-Off Valve -----	147
Cold Weather Start -----	73
Compressor, Air -----	166, 173
Compressor Crankcase -----	170

Compressor Cylinder Block ---	168
Compressor Cylinder Head ---	171
Controls	
Bucket & Boom ---	227, 229, 232
Engine -----	60, 62, 63
Parking Brake -----	142
Rear Axle Disconnect ----	116
Transmission -----	118
Control Valve Assy.(hydraulic) -	222
Control Valve Assy. (transmission) -----	114
Cowl & Platform -----	236
Counterweight -----	237, 238
Coolant Filter & Lines ----	82, 84
Crankshaft -----	20
Crankshaft Pulley -----	19
Cylinders	
Bucket (multi-purpose bucket) -----	253, 255
Dump -----	193, 195
Master --	148, 201, 204, 208, 212
Lift -----	197, 199
Steering -----	175, 176
Wheel -----	137
Cylinder Block -----	16
Cylinder Head -----	26

D

Dash Light Assy. -----	270
Demand Valve Assy. -----	181, 188
Differential Assy. (front & rear)-	130
Differential No-Spin -----	129
Door Assy. (ROPS CAB) -----	280
Drain Valve -----	157
Drive Shaft Group (front) ----	126
Drive Shaft Group (rear) ----	128
Dump Cylinder Assy. -----	195
Dump Cylinder Piping -----	193

E

Emergency Steering Group ----	288
Emergency Steering Motor & Pump -----	290
Electrical System -----	260
Elements	
Air Cleaner -----	81
Fuel Filter -----	51, 52, 54
Hydraulic Tank -----	218
Oil Filter -----	46
Transmission Oil Filter -----	95, 96
Emergency Brake Control Group-	164
(Continued)	

ALPHABETICAL INDEX

E

Emergency Brake Control Valve	
Assy. -----	165
Engine Breather -----	25
Engine Controls -----	61
Engine & Front Mounting -----	14
Engine Oil Pump -----	34, 37
Engine Shut-Off Controls ---	62, 63
Exhaust Manifold -----	50

F

Fan -----	89
Fenders -----	235, 243
Filters	
Engine Oil -----	43, 46
Engine Water -----	82, 84
Fuel -----	51, 52, 54
Hydraulic Tank -----	218
Transmission Oil -----	121
Flex Disc & Converter Drive ---	94
Flood Light -----	263
Flywheel & Housing -----	28
Forward Clutch & Planetary ---	105
Frame (front & rear) -----	239
Front Piping -----	216
Fuel Filter -----	51, 52, 54
Fuel Injection Pump -----	58, 60
Fuel Injection Return Lines --	68, 70
Fuel Tank & Lines -----	56
Fuel Filter & Lines ---	51, 52, 54

G

Gauge Assy. (sight) -----	226
Governor (air compressor) -----	172

H

Head Light -----	263
Heat Exchangers -----	48
Heater Cab -----	285
Hood -----	243
Hose Parts -----	8
High Range Clutch & Transfer	
Drive Gear -----	107
Hour Meter -----	15
Horn, Air -----	151
Hydraulic Controls	
2-Spool -----	227
3-Spool -----	229
Single Lever -----	232
Hydraulic Oil Cooler -----	220
Hydraulic Tank -----	218

Hydraulic Piping (front) -----	216
Hydraulic Pump Assy. ----	188, 191
Hydraulic Pump & Valve Piping -	188

I

Injection Nozzle Lines -----	64, 66
Injection Nozzle Parts -----	72
Injection Pump -----	58, 60
Instrument Panel Cover -----	265
Instrument Panel & Gauges ---	266
Instrument Panel Electrical	
Components -----	268
Instruments & Wiring(ROPS CAB)-	274
Intake Manifold -----	50

L

Ladder, Handrails & Fenders ---	235
Lift Cylinder Assy. -----	199
Lift Cylinder Piping -----	197
Light Assy. -----	263
Light Switch -----	268
Linkage Group -----	249
Lube Oil Filter -----	46

M

Manifold - Intake & Exhaust ---	50
Manifold, Water Outlet -----	87
Muffler -----	74
Multi-Purpose Bucket -----	251
Multi-Purpose Bucket Hydraulics	253

N

No-Spin Differential -----	129
Nozzle Holder Assy. -----	72

O

Oil Cooler (hydraulic) -----	220
Oil Pan -----	40, 41
Oil Pump -----	34, 37
Output Shaft & Axle Disconnect--	110
Oil Pump Lines -----	38

P

Packaged Parts -----	10
Painting & Marking -----	293
Parking Brake Assy. -----	139

(Continued)

ALPHABETICAL INDEX

P

Parking Brake Control	-----	142
Platform & Cowl	-----	236
Piston & Connecting Rod	-----	22
Power Cluster (front & rear)	----	148
Power Steering Pump	-----	180
Power Take-Off	-----	112
Pumps		
Engine Oil	-----	34, 37
Hydraulic	-----	188, 191
Injection	-----	58, 60
Steering	-----	180
Transmission Charging Oil	--	113
Water	-----	85

R

Radiator Assy.	-----	92
Radiator & Fan Guard	-----	91
Radiator Support, Hood & Fenders	-	243
Rear Axle Disconnect	-----	116
Rear Panel Assy. (ROPS CAB)	---	282
Reverse Clutch & Planetary	-----	103

S

Seat & Mounting	-----	247
Seat Belts	-----	246
Shaft & Hub (front & rear axle)	---	134
Side Panels	-----	245
Sight Gauge Assy.	-----	226
Sound Suppression	-----	286
Starter	-----	271
Starting Primer System	-----	73
Steering Cylinder Assy.	-----	176
Steering Gear Assy.	-----	186
Steering Gear Linkage	-----	182
Steering Hydraulics (pump & valve)	178	
Steering Hydraulics (cylinder section)	-----	175
Steering Valve Assy.	-----	175, 184
Steering Pump	-----	180

T

Tail Light Assy.	-----	264
Throttle Pedal	-----	61
Timing Gear Housing	-----	31
Tire Inflation Kit	-----	161
Transmission Assy.	-----	93
Transmission Charging Oil Pump	-	113
Transmission Control	-----	118
Transmission Control Valve	----	114
Transmission Cooling Lines	----	125

(Continued)

Transmission Dipstick	-----	125
Transmission Filter	-----	121
Transmission Filter & Mounting	-	123
Transmission Housing & Cover	-	101
Tools	-----	291
Torque Converter	-----	95
Torque Converter Housing	----	97
Turbine Drive Gear & Freewheel Unit	-----	99
Turbocharger Assy.	-----	77
Turbocharger Connections	----	75
Turn Signals	-----	276

U

Undercarriage Guard	-----	241
---------------------	-------	-----

V

Valves		
Air Application	-----	154
Air Tank Drain	-----	157
Clutch Cut-Off	-----	147
Control	-----	188, 222
Demand	-----	181, 188
Safety (multi-purpose bucket)	-----	253
Steering Valve Assy.	--	175, 184
Transmission Control	----	114
Valve Operating Mechanism	----	29

W

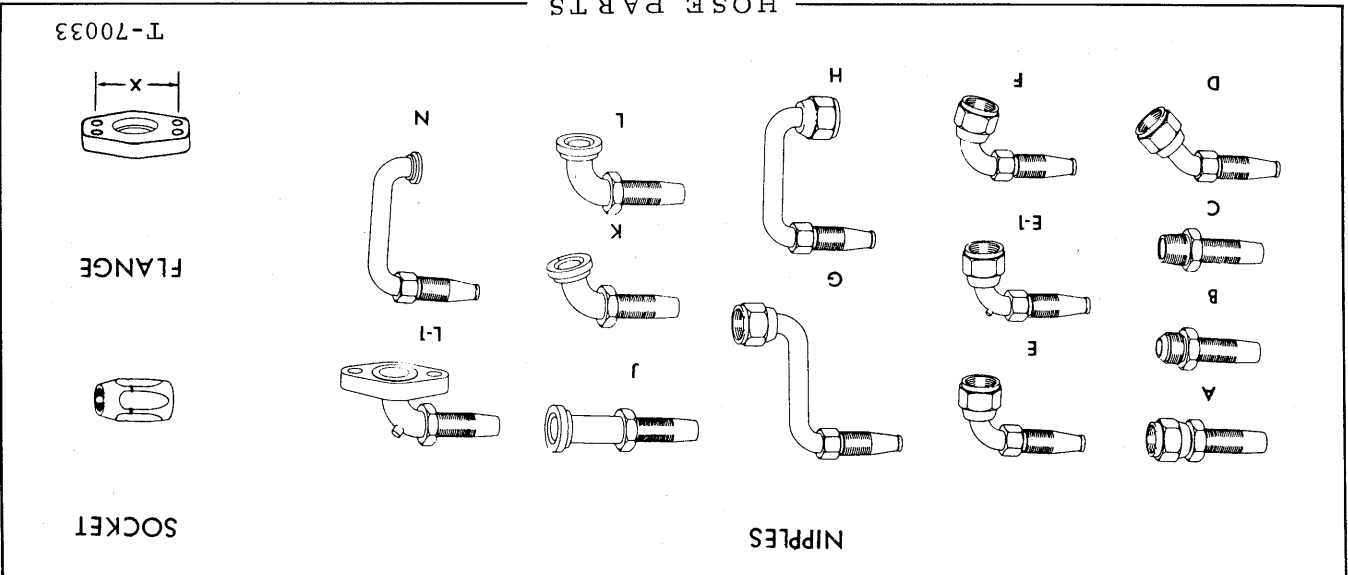
Water Filter	-----	82, 84
Water Outlet Manifold	-----	87
Water Pump	-----	85
Wheel	-----	256
Wiper Groups	-----	284

*Hose Assy. includes Hose Guard

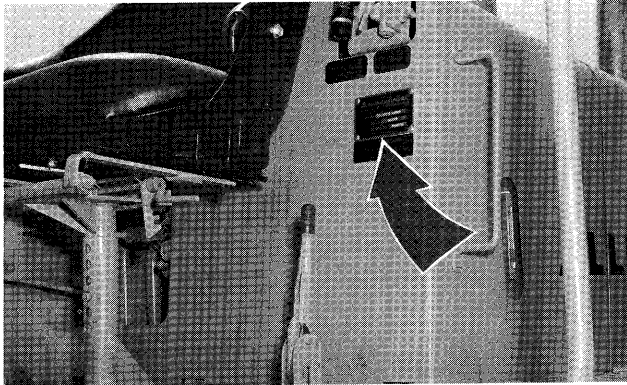
ORIGINAL HOSE ASSY. NUMBER (25' Roll)	HOSE LENGTH (inches)	NIPPLE ASSY. NO. NIPPLE (#1 end) (w/socket)	NIPPLE ASSY. NO. NIPPLE (#2 end) (w/socket)	SOCKET (both ends)
*73045520	70920795	70921855	70923263	L 70920973
*73045542	70920795	70921855	70923263	L 70920973
*73045543	70920795	70921855	70923263	L 70920973
73058700	70922357	70920946	709222832	A 70920986
*73046772	70922355	70920952	70923186	E 70920972
*73046776	70922355	70920944	70920978	A 70920972
*73048016	70920795	70921855	70923263	L 70920973
*73048117	70920795	70920953	70923251	E-1 70920973
73050092	70920795	70920946	709222832	A 70920986
73051704	70920795	70920945	709222831	A 70920973
73104321	70920221	70920852	70920344	A 70919281
73104763	70920221	70920852	70920344	A 70919281
73104969	70920728	70921033	70921034	A 70910282
74320656	70928116	70920850	70920303	A 70919076
74359704	70928123	70920850	70920303	A 70919076
74359714	70928123	70920850	70920303	A 70919076
74359751	70928121	70920848	70920530	A 70919768
73106145	70929728	70920875	70930232	E 70919282
73106262	70920728	70920868	70920144	E 70919282
73106263	70920728	70921033	70921034	A 70919282

NOTE: Refer to left hand column for identity of original hose. Hose is crimped-type (fitting not re-usable) unless otherwise noted. Equivalent hose assembly may be constructed from data indicated.

HOSE PARTS

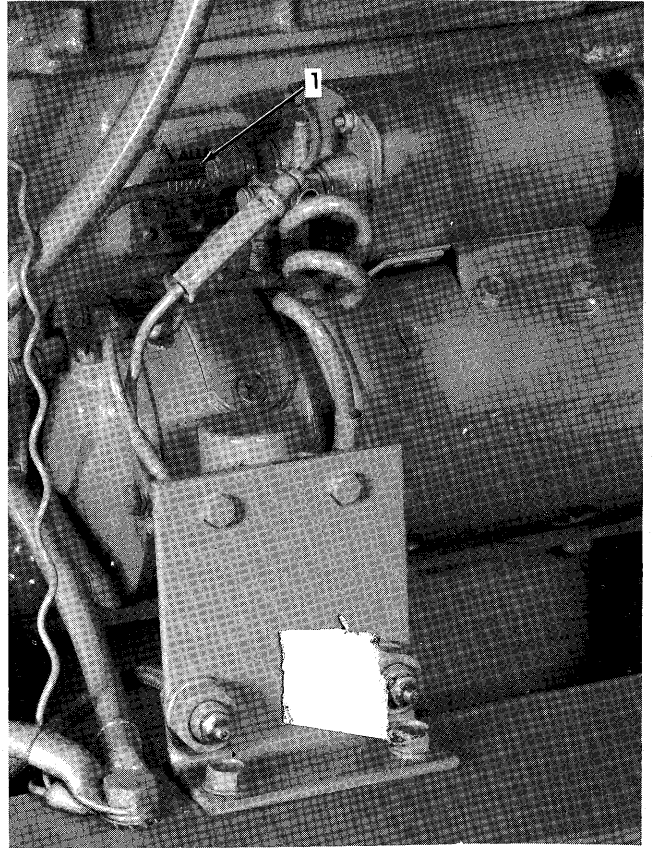


SERIAL NUMBER LOCATIONS



T-74529

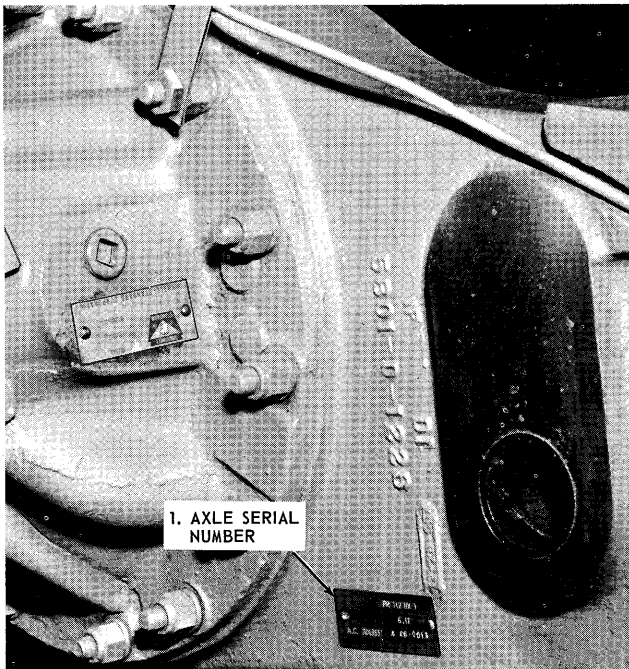
LOADER SERIAL NUMBER



T-73447

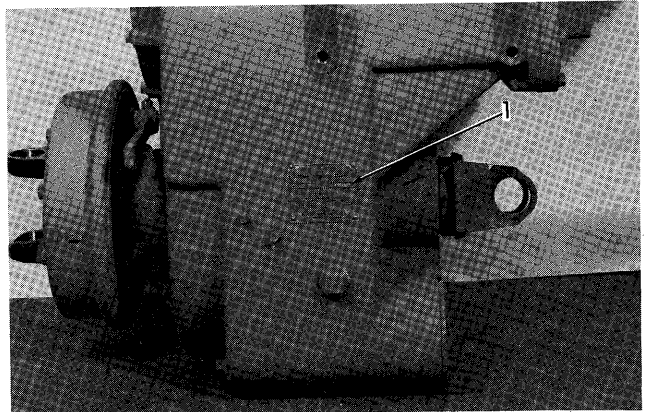
ENGINE SERIAL NUMBER

1. Serial Number Plate



T-72567

AXLE SERIAL NUMBER



T-73448

TRANSMISSION SERIAL NUMBER

1. Serial Number Plate

PACKAGED PARTS

PACKAGE NO.	DESCRIPTION
73048402	REPAIR KIT, air application valve (See page 156)
73048750	REPAIR KIT, alcohol injector (See page 163)
70684391	REPAIR KIT, bucket safety valve (See page 254)
73056493	REPAIR KIT, dump cylinder (See page 196)
73053765	REPAIR KIT, hydraulic pump (See page 192)
73056488	REPAIR KIT, lift cylinder (See page 200)
73058985	REPAIR KIT, master cylinder (See page 202, 205, 209, 213)
73048401	REPAIR KIT, master cylinder/power cluster (See page 149)
73058961	REPAIR KIT, slave cylinder (See page 203, 206, 210, 214)
73058324	REPAIR KIT, steering cylinder (See page 177)
74320996	REPAIR KIT, water pump (See page 85)
-----	BEARING KIT, crankshaft (See page 21)
-----	BEARING KIT, piston and connecting rod (See page 23)
73062160	DECAL KIT, Allis-Chalmers (See page 294)
73062939	DECAL KIT, Fiat-Allis (See page 294)
73058532	LINING KIT, brakes front and rear (See page 138)
73055085	LINING KIT, parking brake (See page 140)
74359757	RING SET, piston (See page 22)
74061524	SLEEVE KIT, cylinder block (See page 18)
74061746	SLEEVE KIT, cylinder block (See page 18)

73062091 SEAL AND GASKET KIT (2-speed forward, 1-reverse)

1	70194585	RING
2	70194679	SEAL
2	70924944	NUT
24	73021041	NUT
1	73021053	SEAL
1	73021056	GASKET
1	73021058	RING
1	73026156	SEAL
1	73031847	CUP
1	73035714	RING
1	73035745	RING
1	73063376	SEAL
1	73042151	SEAL KIT (Includes expander)
2	73044474	GASKET
1	73044485	GASKET
2	73044489	GASKET
6	73046029	STRIP
2	73047668	RING
1	73047698	GASKET
1	73047724	RING
1	73047741	GASKET
1	73048425	GASKET
1	73048782	GASKET
1	73058793	RING, seal
1	73063379	WASHER, seal
1	73062025	RING, seal
1	73062026	RING, seal
2	73062027	RING, seal
1	73062031	GASKET
1	73062032	GASKET

(Continued)

PACKAGED PARTS

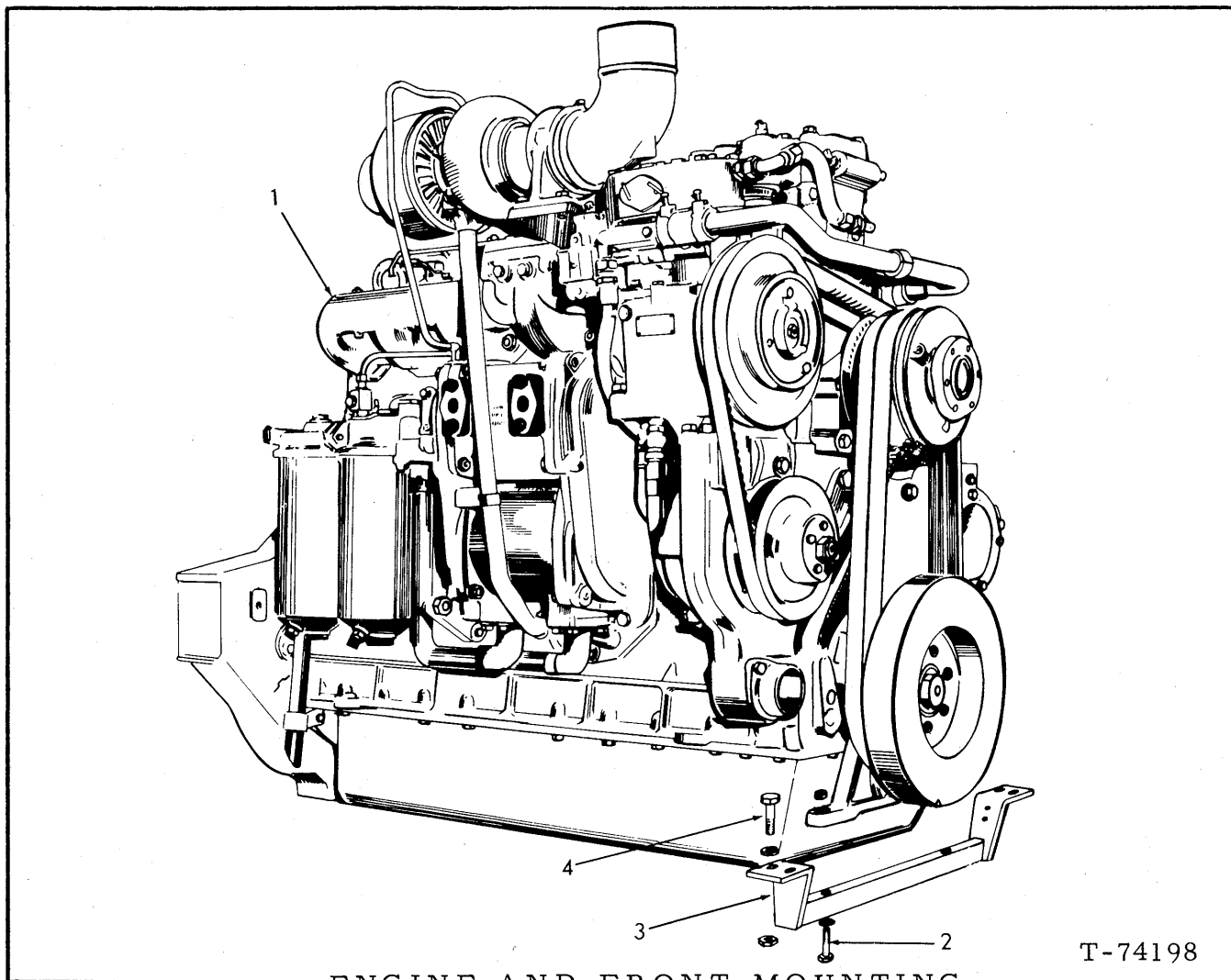
PACKAGE NO.	DESCRIPTION
73062091 (Cont'd)	SEAL AND GASKET KIT (2-speed forward, 1-reverse)
	2 73062043 O-RING
	1 73062051 RING, seal
	1 73062067 RING, seal
74359746	GASKET KIT, cylinder head (Engines prior to #11-25689)
	4 70923574 O-RING, water by-pass tube
	4 70923813 O-RING, water outlet manifold tube
	1 74300145 GASKET, water outlet elbow
	2 74336148 GASKET, rocker cover
	4 74336182 GASKET, water manifold
	1 74336263 GASKET, thermostat housing
	1 74336266 GASKET (Discard)
	2 74337764 GASKET, valve lifter cover
	2 74348133 GASKET (Discard)
	1 74359029 GASKET ASSY., front cylinder head
	1 74359030 GASKET ASSY., rear cylinder head
	12 74359741 GASKET, intake and exhaust manifold
	6 74376749 WASHER, sealing, rocker cover nut
	6 74378031 GASKET, injection nozzle
74321439	GASKET KIT, cylinder head (Engines #11-25689 and up)
	4 70923574 O-RING, water by-pass tube
	4 70923813 O-RING, water outlet manifold tube
	1 74300145 GASKET, water outlet elbow
	2 74336148 GASKET, rocker cover
	4 74336182 GASKET, water manifold
	1 74336263 GASKET, thermostat housing
	1 74336266 GASKET (Discard)
	2 74337764 GASKET, valve lifter cover
	2 74348133 GASKET (Discard)
	1 74321437 GASKET ASSY., front cylinder head
	1 74321438 GASKET ASSY., rear cylinder head
	6 74376749 WASHER, sealing, rocker cover nut
	12 74359741 GASKET, intake and exhaust manifold
	6 74378031 GASKET, injection nozzle
74359122	GASKET KIT, intermediate, cylinder block
	2 70667252 GASKET, oil drain plug (Discard)
	2 70923376 O-RING, flywheel housing dowel
	1 70923589 O-RING, fan drive (Discard)
	1 70923814 O-RING, hydraulic pump drive (Discard)
	1 70923815 O-RING, camshaft hole plug
	1 70923816 O-RING, flywheel to crankshaft (Discard)
	1 70923820 O-RING, fan drive
	1 70924139 O-RING, injection pump mounting cover
	1 74335056 GASKET, water pump volute
	1 74336436 GASKET, oil drain flange
	1 74336676 GASKET, timing hole cover
	1 74336897 RING, sealing, flywheel housing to crankcase.
	1 74339150 GASKET, filter head to block (Discard)
	1 74339151 GASKET, oil cooler to block (Discard)
	1 74346169 GASKET, oil pipe

(Continued)

PACKAGED PARTS

PACKAGE NO.	DESCRIPTION	
74359122 (Cont'd)	GASKET KIT, intermediate, cylinder block	
	2	74346441 GASKET, oil pipe (Discard)
	1	74346456 GASKET, water inlet pipe
	1	74346744 GASKET, water pump
	1	74347031 GASKET, water by-pass flange
	1	74347120 GASKET, timing hole cover
	1	74348126 GASKET, timing gear cover } (Discard)
	1	74348136 GASKET, timing gear housing
	1	74348184 GASKET, oil cooler water outlet
	1	74348185 GASKET, oil cooler water inlet
	2	74348215 GASKET, oil pipe
	1	74348218 GASKET, oil pipe
	1	74354163 GASKET, timing gear cover
	1	74354304 GASKET, fan hose bracket
	1	74354415 GASKET
	1	74362458 GASKET, oil pump cover (Discard)
	2	74373069 GASKET, oil pan cover (Discard)
74359903	PISTON AND SLEEVE KIT (Engines prior to #11-25689)	
	2	70927696 RETAINER, piston pin
	1	74337972 O-RING, bottom groove
	1	74354778 PIN, piston
	1	----- PISTON
	1	----- SLEEVE, cylinder
	1	74359869 O-RING, top groove
	1	74359757 RING SET, piston
	1	74359870 O-RING, center groove

)



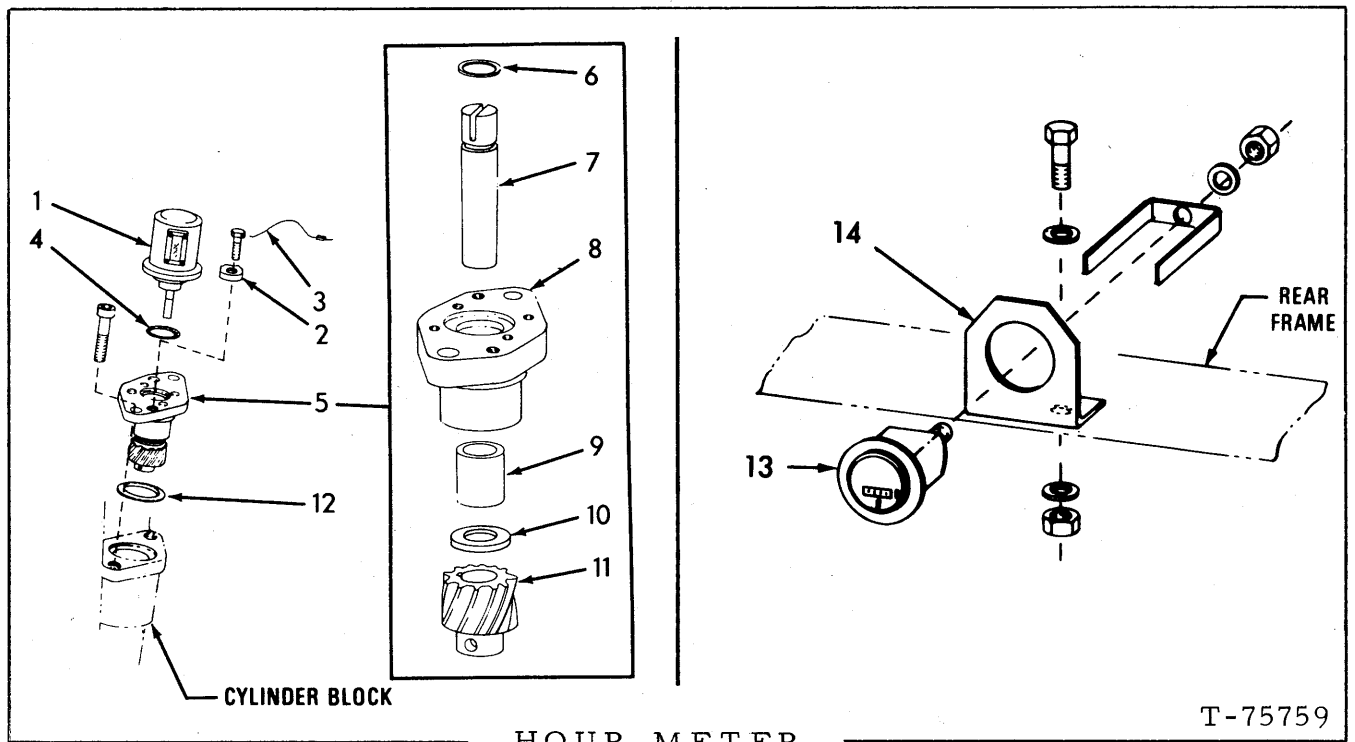
T-74198

ENGINE AND FRONT MOUNTING

ITEM	PART NO.	QTY.	DESCRIPTION
1	74359737	1	ENGINE ASSY. (Applies up thru engine s/n 11-24133)
	74321182	1	ENGINE ASSY. (Applies to engine s/n's 11-24134 thru 11-25688)
	74321427	1	ENGINE ASSY., MARK II (Effective engine s/n 11-25689)
2	70916414	2	CAPSCREW, 5/8" NF x 5-3/4"
	70916589	2	NUT, elastic stop, 5/8" NF
3	73047510	1	BRACKET
4	70921178	4	CAPSCREW, 5/8" NF x 2-3/4"
	73026289	4	WASHER
	70916589	4	NUT, elastic stop, 5/8" NF

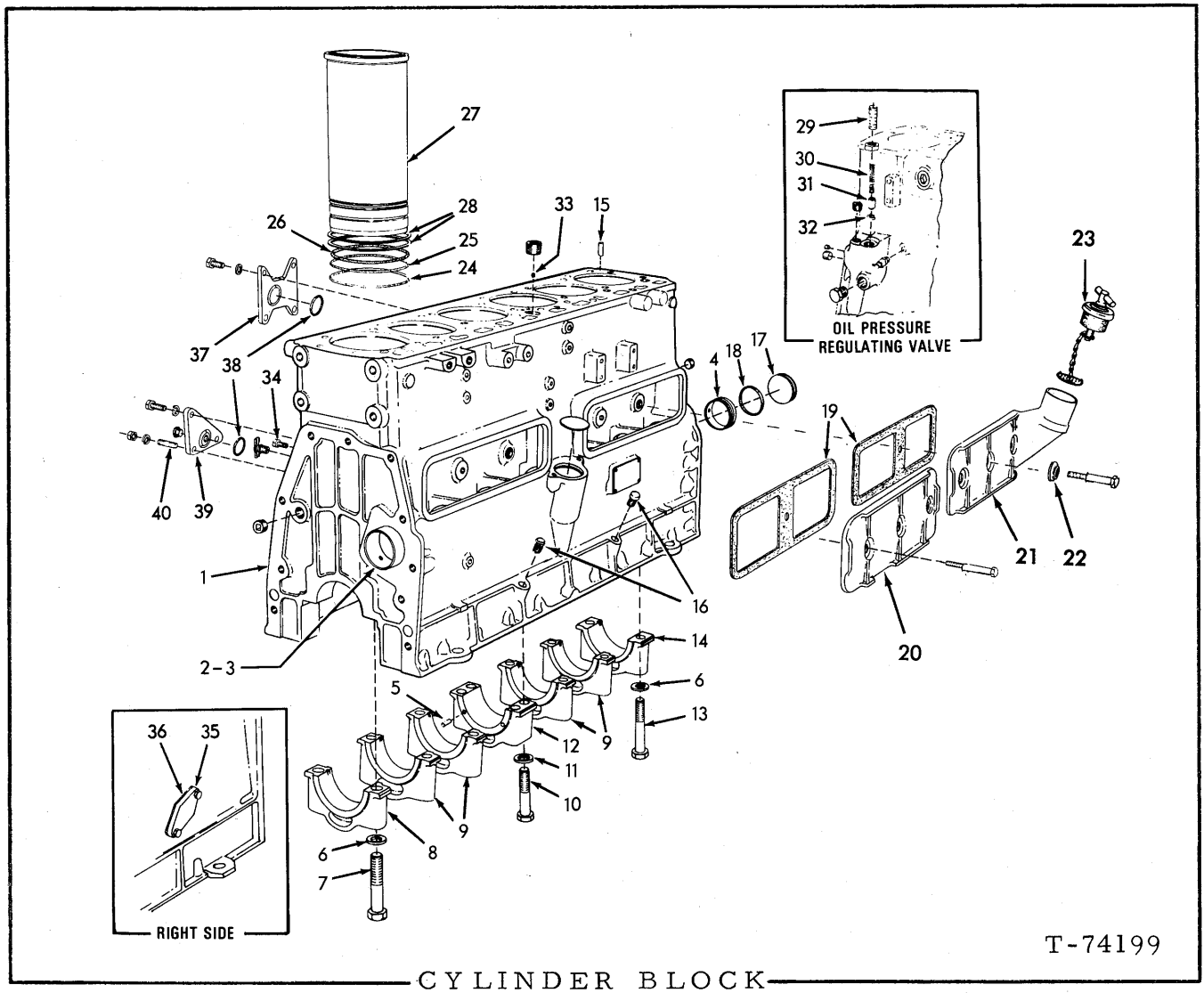
NOTE: For rear engine mount, see page 93.

NOTE: Each ENGINE ASSY. includes oil filter, oil cooler and fuel filter, but is less air cleaner, fan, starter and muffler.



USAGE * Prior to engine s/n 11-24213 loader s/n 72C03186 (Mechanical)
 ** Effective with engine s/n 11-24213 loader s/n 72C03186 (Electrical)

ITEM	PART NO.	QTY.		DESCRIPTION
		*	**	
1	74359290	1	-	METER (Serviced only as a unit)
2	74359293	2	-	CLAMP
	74027687	2	-	SCREW, 1/4" x 7/8"
	70904204	2	-	LOCKWASHER, 1/4"
	74355843	1	-	SEAL
4	70923934	1	-	O-RING
5	74321117	1	-	ADAPTER ASSY. (Consists of items 6 thru 11)
	74359231	2	-	SCREW, 3/8" x 2-1/4"
6	74255961	1	-	RING (Used prior to engine s/n 11-23907)
	70927782	1	-	RING (Effective with engine s/n 11-23907)
7	74359271	1	-	SHAFT (Used prior to engine s/n 11-23907)
	74321116	1	-	SHAFT (Effective with engine s/n 11-23907)
8	-----	1	-	HOUSING (Order item 5)
9	74255962	1	-	BUSHING
10	74359308	1	-	BEARING
11	74660408	1	-	GEAR
12	74253773	1	-	GASKET
13	70699126	-	1	METER (Serviced only as a unit)(Replaces 70688997)
14	73063772	-	1	BRACKET
	70915790	-	1	CAPSCREW, 5/8" NF x 3"
	73026289	-	2	WASHER
	70916589	-	1	NUT, 5/8" NF



CYLINDER BLOCK

T-74199

ITEM	PART NO.	QTY.	DESCRIPTION
1	74321469	1	BLOCK ASSY. (Engines prior to s/n 11-24134)
	74320943	1	BLOCK ASSY. (Engines s/n 11-24134 thru 11-25688)
	74321386	1	BLOCK ASSY. (Engines s/n 11-25689 and up)(Requires piston cooling type main bearings)
	70904223	2	PLUG, pipe, ctsk. -hd., 1/2" NPT
	70910017	1	PLUG, expansion, 2-3/8" diam.
	70917673	1	PLUG, pipe, hex-socket, 1/8" NPT
	70918850	1	PLUG, pipe, hex-socket, 1/4" NPTF
	70918851	4	PLUG, pipe, hex-socket, 3/4" NPT
	70918888	1	PLUG, pipe, ctsk. -hd., 1" NPT
	70919134	2	PLUG, pipe, hex-hd., 1/8" NPT
	70920333	2	PLUG, pipe, hex-hd., 3/8" NPT
	-----	2	PIN, dowel (See item 18 page 32)
	-----	4	PIN (See item 8 page 21)
	-----	2	PIN (See item 6 page 28)

(Continued)

CYLINDER BLOCK (Continued)

ITEM	PART NO.	QTY.	DESCRIPTION
	70920416	1	PLUG, pipe, hex-hd., 1/2" NPT
	70912415	2	COCK, drain, 1/4" NPT
2	{ 74346100	1	BEARING, camshaft, front (Standard size)
	{ 74347416	1	BEARING, camshaft, front (.010" oversize)
3	{ 74320591	2	BEARING, camshaft, intermediate (Standard size)
	{ 74347419	2	BEARING, camshaft, intermediate (.010" oversize)
4	{ 74320592	1	BEARING, camshaft, rear (Standard size)
	{ 74347413	1	BEARING, camshaft, rear (.010" oversize)
5	-----	4	PIN, dowel, thrust flange (See page 20)
6	74354175	12	WASHER
7	74339037	2	CAPSCREW, front main bearing cap
8	{ 74349630	1	CAP, front main bearing (Used prior to engine s/n 11-25689)(See NOTE B)
	{ 74348056	1	CAP, front main bearing (Effective with engine s/n 11-25689)(See NOTE B)
9	74348244	4	CAP, intermediate main bearing (See NOTE B)
10	{ 74339038	4	CAPSCREW, center main bearing cap (Used prior to engine s/n 11-25689)
	{ 74035387	4	CAPSCREW, center main bearing cap (Effective with engine s/n 11-25689)
11	74391160	4	WASHER, center main bearing capscrew
12	{ 74349629	1	CAP, center main bearing (Used prior to engine s/n 11-25689)(See NOTE B)
	{ 74359964	1	CAP, center main bearing (Effective with engine s/n 11-25689)(See NOTE B)
13	74339036	10	CAPSCREW, rear and intermediate main bearing cap
14	{ 74349631	1	CAP, rear main bearing (Used prior to engine s/n 11-25689)(See NOTE B)
	{ 74348246	1	CAP, rear main bearing (Effective with engine s/n 11-25689)(See NOTE B)
15	74336432	4	PIN, dowel, cylinder head
16	74362338	2	PLUG, crankcase
17	74335534	1	PLUG, camshaft hole
18	70923815	1	<input type="checkbox"/> O-RING, camshaft hole plug
19	74337764	2	<input type="checkbox"/> GASKET
20	74320985	1	COVER, front
	70913730	3	CAPSCREW, 5/16" NC x 2-1/4"
21	74320994	1	COVER, rear
	70913599	3	CAPSCREW, 5/16" NC x 2-1/2"
22	74256008	6	WASHER
23	{ 74354449	1	CLOSURE ASSY., oil filler (Serviced only as a unit) First Type
	{ 74354492	1	CLOSURE ASSY., oil filler (Serviced only as a unit) Second Type
24	74337972	6	<input type="checkbox"/> O-RING, cylinder sleeve (bottom)(red)
25	74359870	6	<input type="checkbox"/> O-RING, cylinder sleeve (center)(black with blue markings)
26	74359869	6	<input type="checkbox"/> O-RING, cylinder sleeve (top)(black with white markings)

(Continued)

CYLINDER BLOCK (Continued)

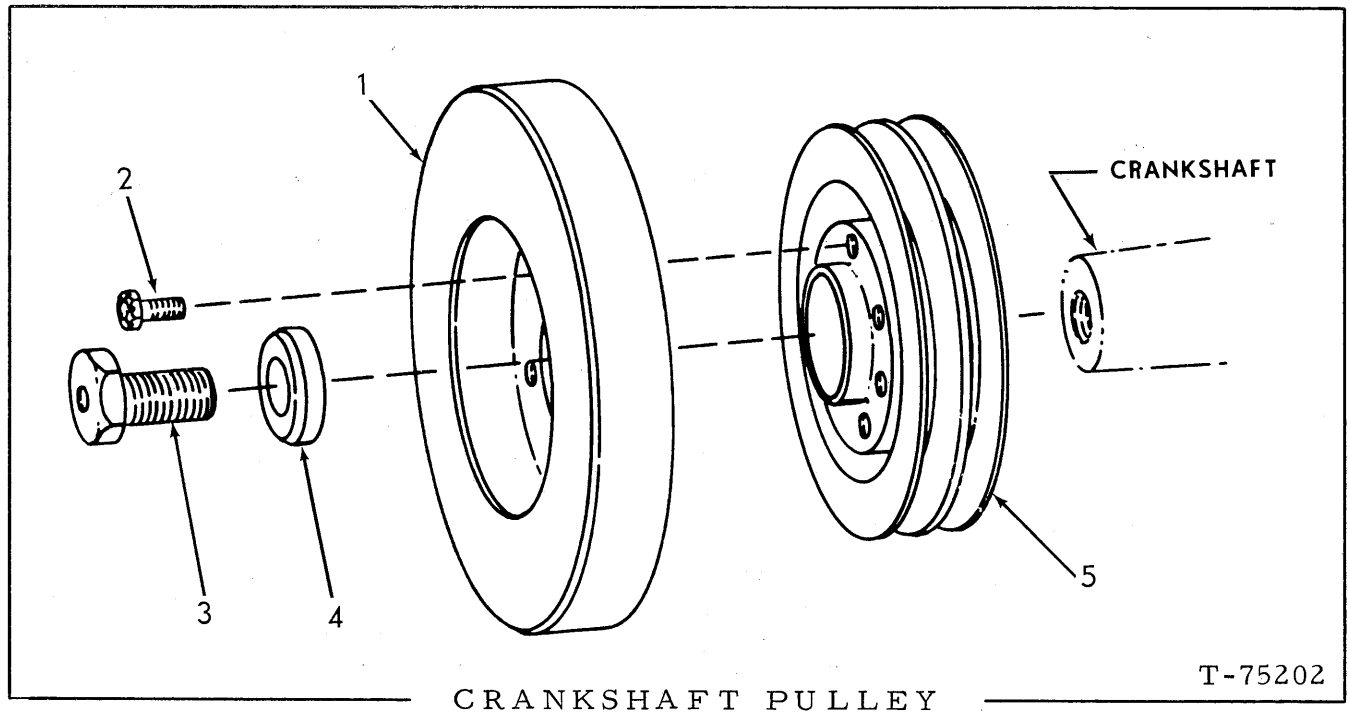
ITEM	PART NO.	QTY.	DESCRIPTION
27	74061524	6	SLEEVE KIT, cylinder (Includes 1 SLEEVE and 1 each of items 24, 25 and 26)(Engines prior to #11-25689)
	74061746	6	SLEEVE KIT, cylinder (Includes 1 SLEEVE and 1 each of items 24, 25 and 26)(Effective with engine #11-25689)
28	74348857	-	SHIM (.005" thick) } Use as required
	74348856	-	
	74348859	-	
	74348858	-	
	74348900	-	
29	74389058	1	SCREW (Used prior to engine s/n 11-25689)
	74022129	1	SCREW (Effective with engine s/n 11-25689)
	70910847	1	NUT, jam, 3/4" NF
30	74660358	1	SPRING (Used prior to engine s/n 11-25689)
	74500231	1	SPRING (Effective with engine s/n 11-25689)
31	74500230	1	PISTON (Used prior to engine s/n 11-25689)
	74507374	1	PISTON (Effective with engine s/n 11-25689)
32	74347465	1	INSERT (Used prior to engine s/n 11-24251)
	74507673	1	INSERT (Effective with engine s/n 11-24251)
33	74347061	1	RESTRICTOR (Used prior to engine s/n 11-25689)
34	70920473	2	CAPSCREW, nylok, 3/8" NC x 3/4"

NOTE A: Items listed below are furnished only with service replacement cylinder block and are not original equipment.

35	74339604	1	PLATE, cover, turbocharger oil drain hole
	70918683	2	CAPSCREW, 1/2" NC x 1-1/8"
	70912441	2	LOCKWASHER, 1/2"
36	74336436	1	□ GASKET, cover plate
37	74335369	1	PLATE, cover, oil gallery hole, upper
	70916311	4	CAPSCREW, 1/2" NC x 1-1/4"
	70912441	4	LOCKWASHER, 1/2"
38	70923718	2	O-RING, oil gallery hole cover plates
39	74359104	1	PLATE, cover, oil gallery hole, lower
	70920333	1	PLUG, pipe, hex-hd., 3/8" NPT
	70919230	1	CAPSCREW, 1/2" NC x 1-3/8"
	74305073	2	STUD
40	70912441	3	LOCKWASHER, 1/2"
	70910195	2	NUT, 1/2" NF

NOTE B: Replacement bearing caps are semi-finished and must be line-bored after installing.

□ (Also see PACKAGED PARTS)



ITEM	PART NO.	QTY.	DESCRIPTION
1	74354261	1	DAMPER, vibration
2	74255585	6	BOLT, place, 7/16" NC x 1"
3	74393587	1	CAPSCREW, 1-1/4" NF x 2"
4	74371503	1	WASHER
5	74359312	1	PULLEY