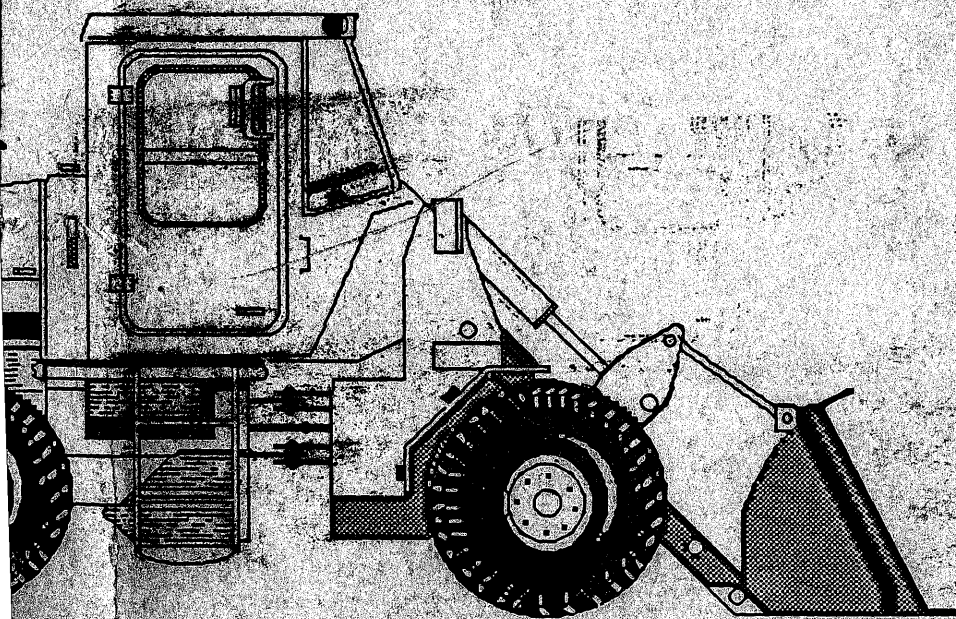


645-B

WHEEL LOADER

Parts Catalog



FORM 73073134
Reprint 1-90

645-B

wheel loader

parts catalog

S/N 11Y03501-UP

S/N 16L03501-UP

S/N 23M03501-UP

Form 73073134 English
(Replaces 73066212)

*HE 03501 + up
consult
MinnPar
British made
machines*



WARNING

STUDY THE OPERATION AND MAINTENANCE
INSTRUCTION MANUAL THROUGH BEFORE STARTING,
OPERATING, MAINTAINING, FUELING OR SERVICING THIS
MACHINE.

Fiatallis is not responsible for any liability arising from any damage resulting from defects caused by parts and/or components not approved by Fiatallis for use in maintaining and/or repairing products manufactured or merchandized by Fiatallis.

In any case, no warranty of any kind is made or shall be imposed with respect to products manufactured or merchandized by Fiatallis when failures are caused by the use of parts and/or components not approved by Fiatallis.

MODEL IDENTIFICATION

79015492

MODEL SYMBOL

645- B

ENGINE MODEL

3500 MKII

DESCRIPTION

Turbocharged diesel powered engine, four wheel drive wheel loader equipped with: powershift transmission, torque converter, planetary axles, power steering and power brakes.

670T
Cat# 4036065
on later units

SERIAL NUMBER LOCATIONS

(See page 12)

LOADER SERIAL NO: On plate attached to the left side of the bonnet in rear of the operators compartment or on left side of platform.

ENGINE SERIAL NO On plate attached to the right hand side of the engine block.

TRANSMISSION SERIAL NO: On plate attached to the right side of the transmission housing.

AXLE SERIAL NO: On plate attached to the axle housing.

RECORD YOUR SERIAL NUMBERS BELOW

WHEEL LOADER SERIAL NO. _____

ENGINE SERIAL NO. _____

TRANSMISSION SERIAL NO. _____

AXLE SERIAL NO.:

Front _____

Rear _____

MODEL SERIAL NUMBER

SERIAL NUMBER consisting of all 8 characters must always be submitted for positive identification of your machine.

LOADER MODEL	SERIAL NUMBER	
	PRODUCT CODE	UNIT NO.
645 B	11 Y	03501
	16 L	03501
	23M	03501

(EXAMPLE)

(Revised December 1980)

ALPHABETICAL INDEX

Air Application Valve Assy	174	Drive Shaft Group	125
Air Brake Lines	164	Dump Cylinder Assy	212
Air Cleaner	64	Electrical System	278
Air Compressor	178, 180	Emergency Brake Control Group	151
Air Horn & Lines	166	Emergency Steering Group	330
Air Tank & Lines	162	Emergency Steering Motor & Pump	329
Alcohol Injector	170	Engine Air Heater	41
Alternator & Mounting	292, 294	Engine & Mounting	13
Automatic Bucket Leveler	216, 220	Engine Controls	66, 68
Automatic Boom Kick-out	224, 228	Engine Coolant Heater	38
Axle Housing Assy. (Front Axle)	135	Engine Oil Filter & Cooler	36
Axle Housing Assy. (Rear Axle)	139	Engine Shut-Off Control	70
Axle & Supports	130	Engine Water Filter	71, 72, 74
Back Up Alarm	282	Exhaust Manifold	40
Batteries & Cables	276	Exhaust Tube & Muffler	59
Battery Covers	277	Fan, defroster	304, 305, 306
Brake Air Lines	164	Fan, engine	78, 80
Brake Assy. (Front Axle)	152	Fenders	247, 258
Brake Assy., parking	148	Filter	
Brake Assy. (Rear Axle)	154	Engine Oil	32, 34, 36
Brake Lines, rear	158	Fuel	46, 48
Bucket	265, 266, 267A	Hydraulic Tank	232
Bucket (Multi-Purpose)	268	Transmission Oil	122, 123
Bucket Hydraulics (Multi-Purpose)	270	Water Coolant	71, 72, 74
Bucket Indicator (Multi-Purpose)	269	FILTER CARE KIT	11A-11F
Bucket Level Indicator	231	Flex Disk & Converter Drive	86
Bucket Leveler, hyd	216, 220	Flywheel Assy	27
Boom	262	Flywheel Housing	26
Boom Kick-Out, hyd	224, 228	Forward Clutch & Planetary	98
Cab	302, 308	Frame	256
Cab Heater	321, 322	Front Piping Group	210
Cab Rear Window	310, 311	Fuel Filter and Lines	46, 48
Charging Oil Pump, transmission	111	Fuel Injection Pump	56, 58, 58A
Clutch Cut-Off Valve	160	Fuel Shut-Off	70
Cold Weather Starting Aid	42	Fuel Tank & Gauge	50
Compressor Crankcase	185, 186	Governor	177
Compressor Cylinder Block	182	Grille	258
Compressor Cylinder Head	184	Handle & Rails	247, 248
Controls, hydraulic	240, 242, 244	Heater	321, 322
Control Valve Parts (hydraulic)	236	High Range Clutch	104
Counterweight	257	High Range Clutch & Transfer Drive Group	100
Cowl & Platform	250	Hood	258
Crankshaft	16	Horn	167
Cylinder		Hose Parts	6
Bucket (Multi-Purpose)	270	Hour Meter	18, 278
Dump	207	Hyd. Brake Lines (Front Section)	161
Lift	207	Hyd. Brake Lines (Rear Section)	158
Master	172, 216, 224	Hyd. Controls	240, 242, 244
Slave	216, 224	Hyd. Piping	203, 206
Steering	196	Hyd. Piping & Cylinders	206
Wheel	156	Hyd. Power Steering System	188
Cylinder Block	14	Hyd. Pump Assy	204
Cylinder Head	20	Hyd. Pump & Piping	202
Cylinder Parts (Multi-Purpose)	272, 273	Hyd. Tank & Valve	232
Dash Light	286	Hyd. Tank Filter	232
Decals	337	Idler Gear Assy	24
Defroster Fan	304, 305, 306	Injection Nozzle	51
Demand Valve Assy	200	Injection Nozzles & Lines	52, 54, 55A
Diff. Carrier Assy. (Front Axle)	132	Injection Pump, fuel	56, 58, 58A
Diff. Carrier Assy. (Rear Axle)	140	Instrument Panel Cover	290
Differential No-SPIN (Rear Axle)	144	Instrument Panel & Gauges	288
Dipstick, Transmission oil	124	Instrument Panel & Elect. Components	286
Discharge Tube, hyd. tank	232	Instrument Panel & Wiring (cab)	300
Door Assy., cab	317, 314	Intake Manifold	39
Drain Valve (air tank)	168	Ladder, Hand Rail & Fenders	247
Drawbar	254	Ladder - Right Side	248
Drive Shaft Assy	126, 127, 128	Lift Cylinder Assy. Parts	214
		Light Assy. Parts	281

ALPHABETICAL INDEX

Lights & Wiring	282	Transmission Charging Oil Pump	111
Linkage Group	262	Transmission Control Group	116
Low Range Clutch & Transfer Drive Gear	102	Transmission Control Valve	114
Lubrication Hoses	125, 130, 188, 206	Transmission Cooling Lines & Dipstick	124
Master Cylinder Assy.	172, 216, 224	Transmission Filter & Mounting	122
Moisture Ejector	168	Transmission Housing & Covers	94
Multi-Purpose Bucket	268	Transmission Oil Filter	122, 123
Multi-Purpose Bucket Hydraulics	270	Transmission Oil Cooler	37
Nozzle Holder Assy.	51, 51A	Transmission Parking Brake	148
Oil Cooler	36, 37	Transmission Rear Housing	110
Oil Filter, engine	32, 34, 36	Turbocharger	60
Oil Pan	30	Turbocharger Assy	62
Oil Pump	28	Turbine Driven Gears & Freewheel Unit	92
Packaged Parts	7	Turn Signals	296, 298
Painting & Marking	337	Tools	326
Parking Brake Assy	148	Undercarriage Guard	252
Parking Brake Control	149	Universal Joint Cartridge & Support	130
Piston & Connecting Rod	19	Valve	
Pivot Pin	256	Air Application	174
Platform	250	Air Horn	166
Power Clusters	164, 172	Air Tank	162
Power Steering Cylinder	196	Clutch Cut-Off	160
Power Steering Pump Assy	198	Demand	200
Power Takeoff	112	Engine Oil Pressure	14
Pump		Hydraulic Control	236
Engine Oil	28	Relief	199
Fuel Injection	56, 58, 58A	Steering	192
Hydraulic	204	Transmission Control	114
Power Steering	198	Valve Operating Mechanism	22
Transmission Charging Oil	111	Water Filter	71, 72, 74
Water	78, 80	Water Separator (Special Equipment)	44
Radiator Hoses	81, 82, 83	Water Pump & Fan	78, 80
Radiator & Fan Guard	81, 82	Wheel Cylinder Assy	156
Radiator Assy	84	Wheel Group	274, 275
Radiator Support, Hood & Fenders	258	Window Assy. (Rear Cab)	310, 311
Rear Axle Disconnect	108	Window (slide)	315A
Rear Axle Disconnect Controls	120	Windshield Wiper Group, Rear	317, 318
Rear Output Group	106	Wiper Group (pantograph)	316
Rear View Mirror	307	Wiper Group	316, 317, 318
Rear Window Assy	310, 311		
Relief Valve Assy	199		
Reverse Clutch & Planetary	96		
Safety Locking Bar	255		
Seat Belt	261		
Seat & Mounting	260		
Shaft & Hub (Front Axle)	136		
Shaft & Hub (Rear Axle)	146		
Side Panels	249		
Sight Gauge Assy.	235		
Sound Suppression Group	334		
Starter	291		
Steering Cylinder	188, 196		
Steering Gear Assy	192		
Steering Valve	192		
Strainer & Magnet	232		
Suction Fan	78, 80		
Tail Light/Stoplight Assy	284		
Tank, fuel	50		
Tank, hydraulic	232		
Thermostat & Housing	76, 77		
Tie Rod Assy.	195		
Timing Gear Housing	25		
Tire Valve Kit	43		
Torque Converter	88		
Torque Converter Housing	90		
Transmission	85		

SHUT OFF
 CABE,
 70

MODEL IDENTIFICATION

MODEL SYMBOL	ENGINE MODEL	DESCRIPTION
645- B	3500 MKII	Turbocharged diesel powered engine, four wheel drive wheel loader equipped with: powershift transmission, torque converter, planetary axles, power steering and power brakes.

SERIAL NUMBER LOCATIONS

(See page 12)

LOADER SERIAL NO: On plate attached to the left side of the bonnet in rear of the operators compartment or on left side of platform.

ENGINE SERIAL NO On plate attached to the right hand side of the engine block.

TRANSMISSION SERIAL NO: On plate attached to the right side of the transmission housing.

AXLE SERIAL NO: On plate attached to the axle housing.

RECORD YOUR SERIAL NUMBERS BELOW

WHEEL LOADER SERIAL NO. _____

ENGINE SERIAL NO. _____

TRANSMISSION SERIAL NO. _____

AXLE SERIAL NO.:

Front _____

Rear _____

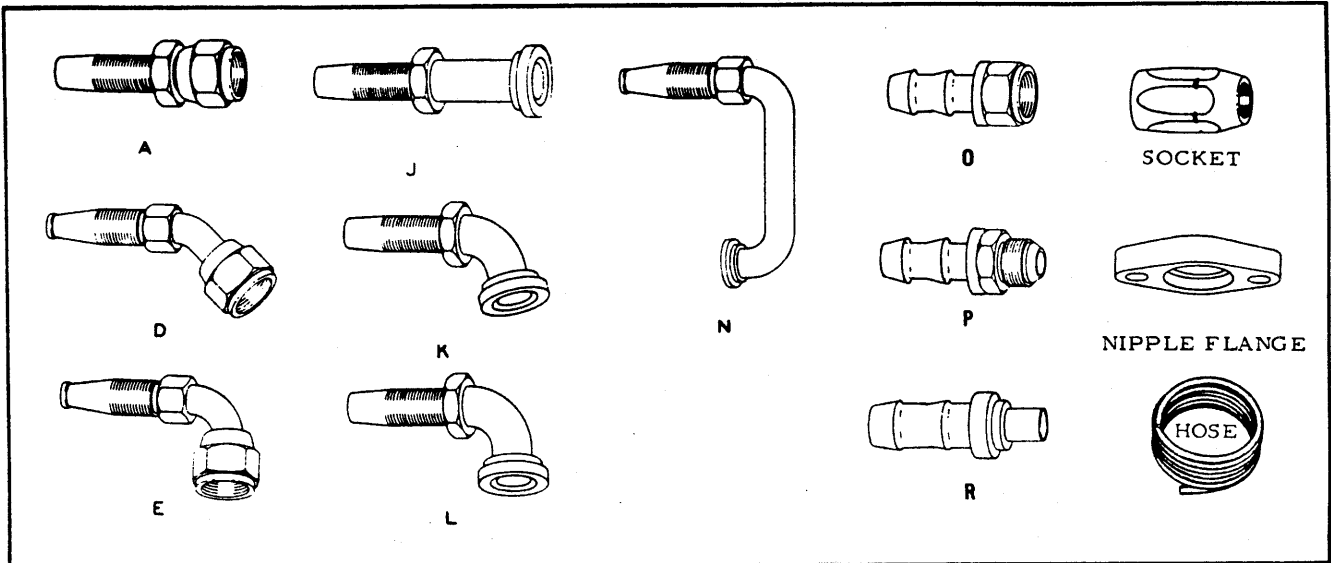
MODEL SERIAL NUMBER

SERIAL NUMBER consisting of all 8 characters must always be submitted for positive identification of your machine.

LOADER MODEL	SERIAL NUMBER	
	PRODUCT CODE	UNIT NO.
645 B	11 Y	03501
	16 L	03501
	23 M	03501

(EXAMPLE)

(Revised December 1980)



NOTE: Refer to left hand column for identity of original hose. Hose is crimped-type (fitting not re-usable) unless otherwise indicated. Equivalent hose assembly may be constructed from data given.

ORIGINAL HOSE ASSY. NO.	BULK HOSE (25' roll)	HOSE LENGTH (inches)	NIPPLE (#1 end)			NIPPLE (#2 end)			SOCKET (both ends)
			Including SOCKET	NIPPLE only		Including SOCKET	NIPPLE only		
70654253	70920795	37-1/8"	70920945	70922831	A	70920945	70922831	A	70920973
70654271	70919474	22-3/8"	70920851	70921046	A	70920851	70921046	A	70919469
73043353	70920793	40-3/8"	70920942	70921562	A	70920942	70921562	A	70920971
73044144	70920794	32"	70923506	70922894	L	70923506	70922894	L	70920972
73044145	70920794	32"	70923506	70922894	L	70923506	70922894	L	70920972
73044146	70920795	22-1/4"	70920945	70922831	A	70920945	70922831	A	70920973
73044149	70920794	29-3/4"	70923506	70922894	L	70921020	70922830	A	70920972
73044164	70920794	32"	70923506	70922894	L	70923506	70922894	L	70920972
73044165	70920794	32"	70923506	70922894	L	70923506	70922894	L	70920972
73044172	70920793	77-1/4"	70920951	70921563	E	70920961	70921302	D	70920971
73044802	70920727	24-5/8"	70920852	70920344	A	70920852	70920344	A	70919281
73045624	70920795	58-5/8"	70920945	70922831	A	70920945	70922831	A	70920973
73045838	70920795	30-5/8"	70924239		K	70925267		L	70920973
73053413	70920795	32-1/4"	70925267	70928519	L	70923486		J	70920973
73053427	70920794	13-1/4"	70920962	70921564	D	70923904	70927099	J	70920972
73053731	70920795	10-1/2"	70925267	70928519	L			N	
73054019	70920221	32"	70920867	70919277	E	70920852	70920344	A	70919281
73057706	70920388	25-3/8"				70920806		O	
73058833*	70928122	32-5/16"		70928096	A		70928096	A	70928084
73058834*	70928122	58-3/4"		70928096	A		70928096	A	70928084
73062464	70920795	21-3/4"	70920945	70922831	A	70920945	70922831	A	70920973
△73071129	70920794	32	70923506	70922894	L	70923506	70922894	L	70920972
△73071130	70920794	32	70923506	70922894	L	70923506	70922894	L	70920972
△73071131	70920794	32	70923506	70922894	L	70923506	70922894	L	70920972
△73071132	70920794	32	70923506	70922894	L	70923506	70922894	L	70920972

*Also order 2 NUT 70928090 for each assy.
 △Includes hose guard.

PACKAGED PARTS

PACKAGE NO.	DESCRIPTION
73048750	REPAIR KIT, alcohol injector (See page 171)
73056485	REPAIR KIT, dump cylinder (See page 213)
73056493	REPAIR KIT, lift cylinder (See page 215)
73055137, 73064512	REPAIR KIT, steering cylinder (See page 197)
73050552	REPAIR KIT, master cylinder (See page 173)
73050553	REPAIR KIT, power cluster (See page 173)
73021893, 73014582	REPAIR KIT, wheel cylinder (See page 156)
73048402	REPAIR KIT, air application valve (See page 176)
73055351	LINING KIT, brake (See page 153, 155)
73058991, 73062937	DECAL KIT, (See page 338)
74028036	RING SET, piston (See page 19)
74029506	REPAIR KIT, water pump (See page 79)
74035204	REPAIR KIT, water pump (See page 80)
74061725	REPAIR KIT, piston (See page 19)
73024625	SHIM KIT, pinion bearing cage assy., rear axle
	1 73024624 SHIM (.003" thick)
	1 73024626 SHIM (.005" thick)
	1 73024627 SHIM (.010" thick)
73046168	SEAL AND GASKET KIT, transmission (2-speed forward, 1-reverse)
	24 73021041 NUT
	1 73021053 *SEAL, oil, shifter shaft
	2 73067517 GASKET, strainer and core cover
	1 73021058 RING, seal
	1 73026156 *SEAL, oil
	1 73027012 RING, seal, cover
	1 73031847 CUP, cut-off plug
	1 73035714 RING, seal, hi-clutch
	1 73035745 RING, seal
	2 73042138 *SEAL KIT (Includes expander)
	2 73042146 *SEAL KIT (Includes expander)
	1 73042151 SEAL KIT (Includes expander)
	6 73044377 STRIP, locking, pump retainer
	1 73044382 RING, seal
	1 73044386 GASKET, oil pump
	1 73044390 GASKET, housing, transmission
	1 73044400 RING, seal, suction tube nut
	1 73044402 GASKET, cover, oil pump
	1 73044409 SEAL, oil
	1 73044410 GASKET, rear cover
	1 73044411 RING, seal, rear cover
	3 73044414 NUT (Two req'd for this transmission)
	2 73044422 RING, seal, 2nd turbine
	6 73044460 TAB, lock, piston housing
	2 73044462 SEAL, oil, output shaft
	2 73044474 GASKET

* Not required for this application

(Continued)

PACKAGED PARTS

PACKAGE NO.	DESCRIPTION
73046168	SEAL AND GASKET KIT, transmission (2-speed forward, 1-reverse)(Continued)
1	73044485 GASKET, trimmer valve
2	73044489 GASKET, cut-off plug
6	73046029 STRIP, locking
1	73048782 GASKET, control valve
1	73051197 DIAPHRAGM AND SEAL ASSY.
1	73054475 GASKET, pump, torque converter
1	73055857 SEAL, oil
2	73058791 RING, seal
2	73058792 RING, seal
2	73058793 RING, seal
2	73063376 SEAL, oil, valve (One req'd for this trans.)
1	----- INSTRUCTION SHEET
73046957	SEAL AND GASKET KIT, transmission (2-speed forward, 2-reverse)
24	73021041 NUT, converter cover
1	73021053 *SEAL, oil
2	73067517 GASKET
1	73021058 RING, seal, cut-off, valve plug
2	73021121 RING, seal, low piston
1	73026156 *SEAL, oil pump body
1	73027012 RING, seal, cover
1	73027016 *RING, seal converter drive
1	73031847 CUP, plug
1	73042138 *SEAL KIT (Includes expander)
2	73042146 *SEAL KIT (Includes expander)
1	73042147 SEAL KIT (Includes expander)
6	73044377 STRIP, locking, pump retainer
1	73044382 RING, seal, input gear
1	73044386 GASKET, oil pump
1	73044390 GASKET, transmission housing
1	73044400 RING, seal, nut, suction tube
1	73044402 GASKET, pump cover
1	73044409 *SEAL, oil
1	73044411 RING, seal, rear housing
2	73044414 NUT, drive flange
2	73044422 RING, seal, ground sleeve
2	73044462 SEAL, oil
2	73044474 GASKET, plug
1	73044485 GASKET, trimmer valve
2	73044489 GASKET, cut-off valve plug
1	73076470 GASKET, adapter, rear housing
2	73045289 RING, seal, piston housing
1	73045313 SEAL KIT (Includes expander)
1	73045320 GASKET, rear housing
1	73045327 SEAL, oil

*Not required for this application.

(Continued)

(Revised February 1984)

PACKAGED PARTS

PACKAGE NO.	DESCRIPTION
73046957	SEAL AND GASKET KIT, transmission (2-speed forward, 2reverse)(Continued)
1	73048782 GASKET, control valve
1	73051197 DIAPHRAGM AND SEAL ASSY.
1	73054475 GASKET, pump
1	73055857 SEAL, oil
2	73058791 RING, seal
2	73058792 RING, seal
2	73058793 RING, seal
1	73063376 SEAL, range selector valve
74036461	GASKET KIT, engine overhaul
1	74029556 KIT, flywheel housing sleeve
1	74036340 KIT, timing gear housing seal
1	74036459 KIT, cylinder head gasket
1	74036460 KIT, oil pump and pan gasket
1	74062088 KIT, flywheel housing seal
2	70917806 SLEEVE
14	70917807 SLEEVE
4	70917808 SLEEVE
1	70920849 SLEEVE
4	70920884 O-RING
1	70923576 O-RING
1	70923621 O-RING
2	70923637 O-RING
2	70923649 O-RING
4	70923664 O-RING
1	70923684 O-RING
1	70923814 O-RING
1	70923817 O-RING
1	70923822 O-RING
1	70923934 O-RING
1	70923971 O-RING
2	70933325 O-RING
1	74020879 O-RING
6	74025015 O-RING
1	74025017 GASKET
1	74025019 GASKET
2	74025021 GASKET
1	74025097 O-RING
1	74025106 GASKET
2	74025120 GASKET
1	74025343 GASKET
1	74025622 GASKET
1	74025367 GASKET
2	74025632 GASKET
1	74026548 GASKET
1	74026549 GASKET
1	74026887 GASKET
1	74027570 GASKET
1	74027752 GASKET
1	74028063 GASKET

(Continued)

PACKAGED PARTS

PACKAGE NO.

DESCRIPTION

74036461

GASKET KIT, engine overhaul (Continued)

1	74028064	GASKET
1	74028074	GASKET
1	74028781	GASKET
1	74028820	GASKET
1	74028823	GASKET
12	74028875	O-RING
1	74028997	GASKET
1	74029053	GASKET
2	74029091	GASKET
1	74029299	GASKET
1	74035330	GASKET
1	74036088	GASKET
1	74056517	GASKET
1	74255661	O-RING
1	74349984	GASKET

74036459

GASKET KIT, cylinder head

9	70917806	SLEEVE
1	70917807	SLEEVE
2	70923974	O-RING
1	70929110	O-RING
6	70930506	O-RING
1	74024554	GASKET
2	74025101	GASKET
6	74025150	GASKET
1	74025376	GASKET
12	74025385	DUST SHIELD
1	74025781	GASKET
1	74026579	GASKET
6	74027014	GASKET
1	74027719	HOSE
1	74027975	HOSE
1	74028190	GASKET
1	74029324	GASKET
1	74029327	GASKET
1	74079742	GASKET
2	74029746	GASKET
1	74029748	GASKET
1	74035198	HOSE
1	74035214	GASKET
1	74035933	GASKET
1	74255983	SLEEVE
1	74338943	GASKET
1	74339532	GASKET
1	-----	INSTRUCTION SHEET

PACKAGED PARTS

PACKAGE NO.

DESCRIPTION

74035253

GASKET KIT, cylinder head (Effective with engine S/N 3D-39024)(Replaces 74035275)

- 1 74029748 *GASKET, intercooler to manifold
- 1 74035214 GASKET, cylinder head cover
- 2 74255983 SLEEVE, oil feed line
- 1 74338943 GASKET, diffuser
- 1 74339532 GASKET, oil drain tube

74062328

SLEEVE KIT (For one cylinder)

- 1 74025015 O-RING, bottom
- 2 74028875 O-RING, middle and top
- 1 ----- SLEEVE

*Not required for this application.

74036615

1 NOZZLE AND LINE CONVERSION KIT (Lower spring type nozzles)(Engines prior to S/N 70-11322)

- 1 70920411 TEE
- 1 70921534 UNION
- 6 74009035 WASHER
- 6 74009040 SHIELD
- 12 74009199 CAPSCREW
- 1 74009236 TUBE
- 1 74036548 TUBE
- 1 74036549 TUBE
- 1 74036559 TUBE
- 1 74036560 TUBE
- 1 74036561 TUBE
- 1 74036562 TUBE
- 1 74036563 TUBE
- 1 74036564 TUBE
- 6 74036654 NOZZLE AND HOLDER ASSY.
- 6 74322188 SCREW
- 12 74322189 GASKET
- 6 74322293 FLANGE
- 12 74501149 SLEEVE
- 12 74504409 NUT
- 1 ----- INSTRUCTION SHEET

74036460

GASKET KIT, oil pump and pan

- 4 70923934 O-RING
- 3 70928302 O-RING
- 1 70930924 O-RING
- 1 74026602 GASKET SET, oil pan
- 1 74028070 GASKET
- 1 74393349 GASKET
- 1 74393359 GASKET

(Revised August 1981)

"FILTER CARE" KIT

MODEL: 645B (PRIOR TO ENGINE S/N 3D-56914)

250 HOUR KIT

PART NUMBER: 75124732

<u>QUANTITY</u>	<u>PART NUMBER</u>	<u>DESCRIPTION</u>
2	70663977	GASKET HYDRAULIC FILTER
1	70926821	O'RING HYDRAULIC FILTER
1	74037047	LUBE OIL FILTER
1	70666421	HYDRAULIC FILTER

NOTE: For machines equipped with a bypass lube oil filter, sell the customers one 74059373 as a separate item in addition to the Filter Care Kit.

Added May 1989

"FILTER CARE" KIT

MODEL: 645B (PRIOR TO ENGINE S/N 3D-56914)

500 HOUR KIT

PART NUMBER: 75124735

<u>QUANTITY</u>	<u>PART NUMBER</u>	<u>DESCRIPTION</u>
2	70663977	GASKET HYDRAULIC FILTER
1	70926821	O'RING HYDRAULIC FILTER
1	74037047	LUBE OIL FILTER
1	70666421	HYDRAULIC FILTER
1	74028945	FUEL FILTER
1	74029089	COOLANT FILTER

NOTE: For machines equipped with a bypass lube oil filter, sell the customers one 74059373 as a separate item in addition to the Filter Care Kit.

"FILTER CARE" KIT

MODEL: 645B (PRIOR TO ENGINE S/N 3D-56914)

1000 HOUR KIT

PART NUMBER: 75124736

<u>QUANTITY</u>	<u>PART NUMBER</u>	<u>DESCRIPTION</u>
2	70663977	GASKET HYDRAULIC FILTER
1	70926821	O'RING HYDRAULIC FILTER
1	74037047	LUBE OIL FILTER
1	70666421	HYDRAULIC FILTER
1	74028945	FUEL FILTER
1	74029089	COOLANT FILTER
1	73067517	GASKET TRANSMISSION SUCTION STRAINER
1	79043778	AIR FILTER PRIMARY
1	70662609	AIR FILTER - SAFETY
1	70679513	TRANSMISSION FILTER

NOTE: Clean and reuse:
Transmission suction strainer - 73044396.

For machines equipped with a bypass lube oil filter, sell the customers one 74059373 as a separate item in addition to the Filter Care Kit.

Added May 1989

"FILTER CARE" KIT

MODEL: 645B ENGINE S/N 3D-56914 & UP

250 HOUR KIT

PART NUMBER: 75124732

<u>QUANTITY</u>	<u>PART NUMBER</u>	<u>DESCRIPTION</u>
2	70663977	GASKET HYDRAULIC FILTER
1	70926821	O'RING HYDRAULIC FILTER
1	74037047	LUBE OIL FILTER
1	70666421	HYDRAULIC FILTER

NOTE: For machines equipped with a bypass lube oil filter, sell the customers one 74059373 as a separate item in addition to the Filter Care Kit.

Added May 1989

"FILTER CARE" KIT

MODEL: 645B ENGINE S/N 3D-56914 & UP

500 HOUR KIT

PART NUMBER: 75124733

<u>QUANTITY</u>	<u>PART NUMBER</u>	<u>DESCRIPTION</u>
2	70663977	GASKET HYDRAULIC FILTER
1	70926821	O'RING HYDRAULIC FILTER
1	74037047	LUBE OIL FILTER
1	70666421	HYDRAULIC FILTER
1	74029089	COOLANT FILTER
1	74321716	FUEL FILTER

NOTE: For machines equipped with a bypass lube oil filter, sell the customers one 74059373 as a separate item in addition to the Filter Care Kit.

Added May 1989

"FILTER CARE" KIT

MODEL: 645B ENGINE S/N 3D-56914 & UP

1000 HOUR KIT

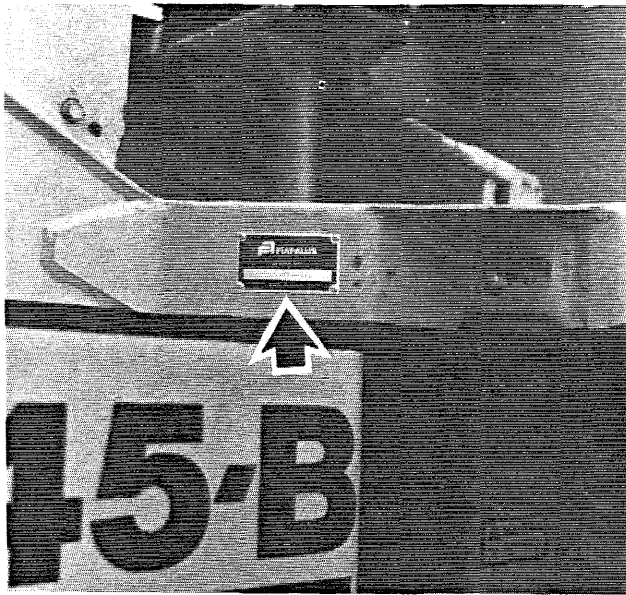
PART NUMBER: 75124734

<u>QUANTITY</u>	<u>PART NUMBER</u>	<u>DESCRIPTION</u>
2	70663977	GASKET HYDRAULIC FILTER
1	70926821	O'RING HYDRAULIC FILTER
1	74037047	LUBE OIL FILTER
1	70666421	HYDRAULIC FILTER
1	74029089	COOLANT FILTER
1	73067517	GASKET TRANSMISSION SUCTION STRAINER
1	79043778	AIR FILTER PRIMARY
1	70662609	AIR FILTER - SAFETY
1	70679513	TRANSMISSION FILTER
1	74321716	FUEL FILTER

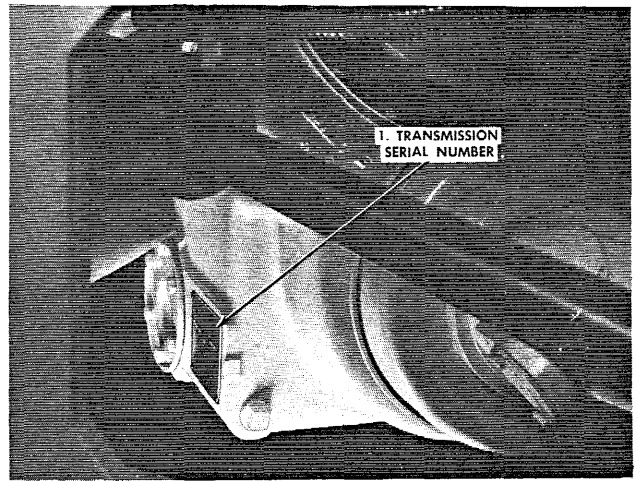
NOTE: Clean and reuse:
Transmission suction strainer - 73044396.

For machines equipped with a bypass lube oil filter, sell the customers one 74059373 as a separate item in addition to the Filter Care Kit.

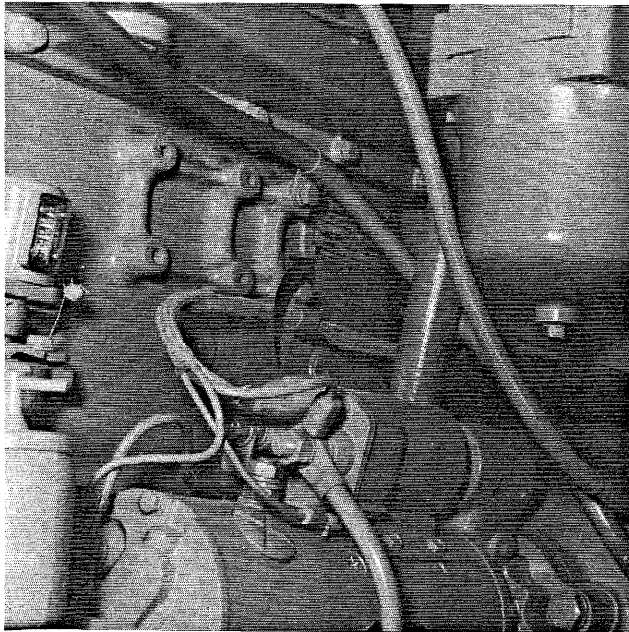
SERIAL NUMBER LOCATIONS



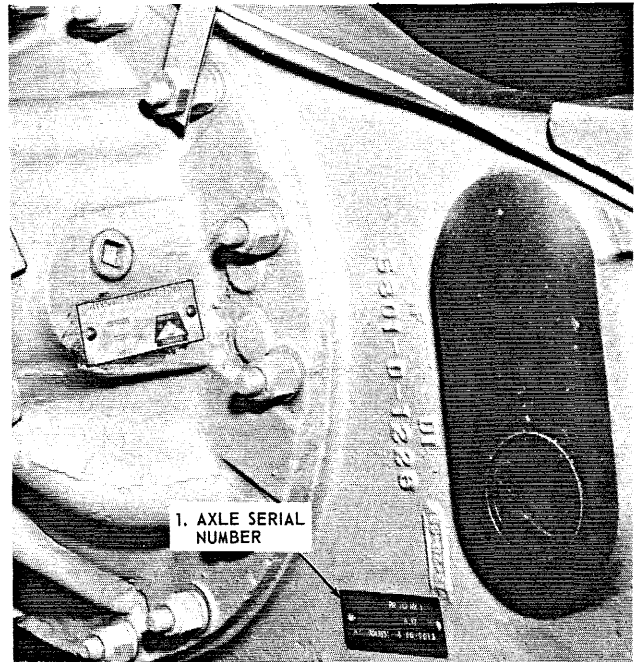
T-76641A
LOADER SERIAL NUMBER



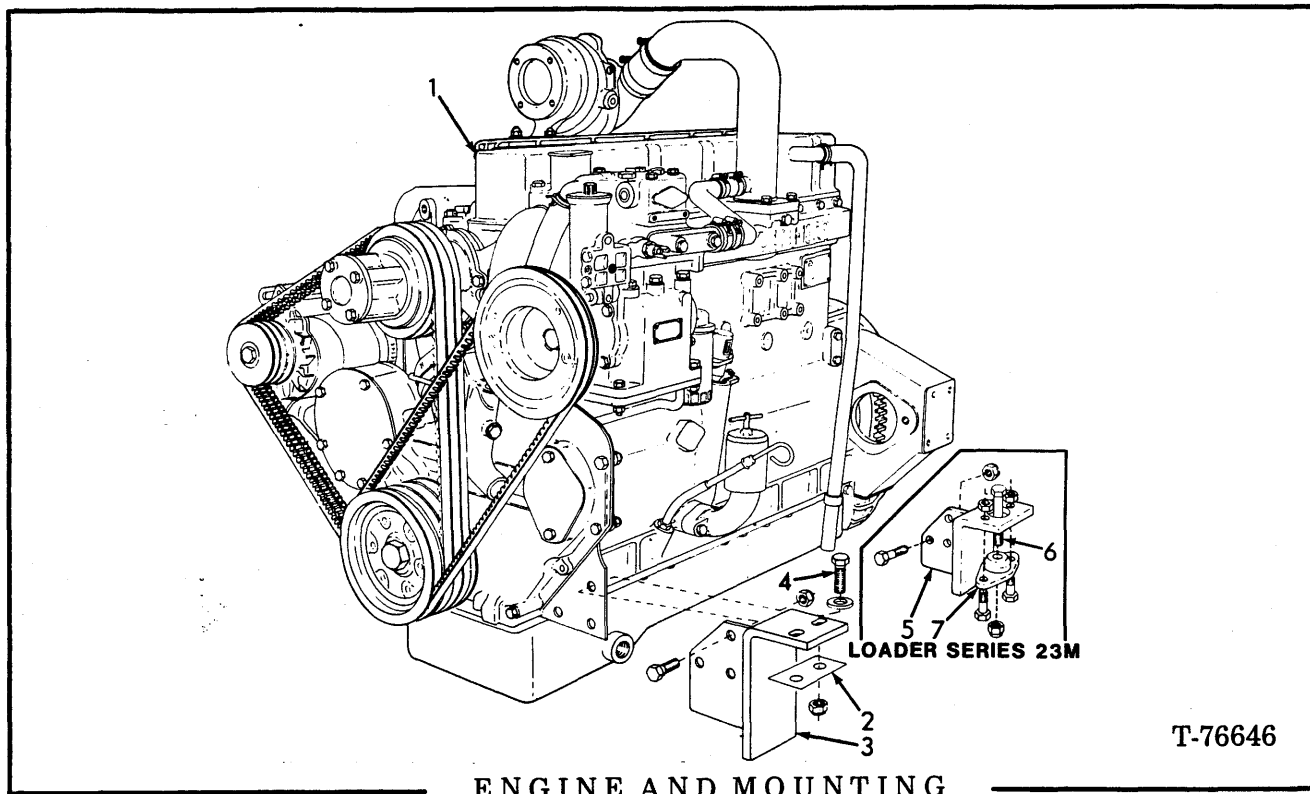
T-71046
TRANSMISSION SERIAL NUMBER



T-76642
ENGINE SERIAL NUMBER



T-72567
AXLE SERIAL NUMBER



ENGINE AND MOUNTING

T-76646

*Loader series 11Y
 **Loader series 23M

ITEM	PART NO.	QTY. * **	DESCRIPTION
1	74036089	1 1	ENGINE ASSY.(Less air cleaner, compressor assy., fan and starter)(For engine installation prior to loader s/n 11Y0-4903 and 23M05671, engine s/n 3D-56914 also order item 8)
	70912415	2 2	DRAIN COCK
2	73043879	4 4	SHIM(.0598" thick - use as required)
3	73053929	1 -	BRACKET, right
	73053928	1 -	BRACKET, left
	70913105	6 -	CAPSCREW, 1/2" NF x 1-1/2"
	70914487	6 -	LOCKNUT, 1/2" NF
4	70915789	4 -	CAPSCREW, 5/8" NF x 2-1/2"
	70677010	4 -	WASHER
	70916589	4 -	LOCKNUT, 5/8" NF
5	70736263	- 1	BRACKET, left
	70736264	- 1	BRACKET, right
	70913105	- 6	CAPSCREW, 1/2" NF x 1-1/2"
	70914487	- 6	LOCKNUT, 1/2" NF
6	70916264	- 2	CAPSCREW, 5/8" NC x 4"
	70915256	- 2	LOCKNUT, 5/8" NC
7	73063249	- 2	ISOLATOR
	70916272	- 4	CAPSCREW, 3/8" NC x 1-1/4"
	70900367	- 4	LOCKNUT, 3/8" NC
8	73071620	1 1	*KIT(loaders 11Y and 23M03501 thru 11Y04800 and 23M04864)
	73071619	1 1	*KIT(loaders 11Y04801 and 23M04865 thru 11Y05632 and 23M05670)

*Also order air heater kit page 41 and hourmeter kit page 280.

(Revised August 1979)