

Roadranger®

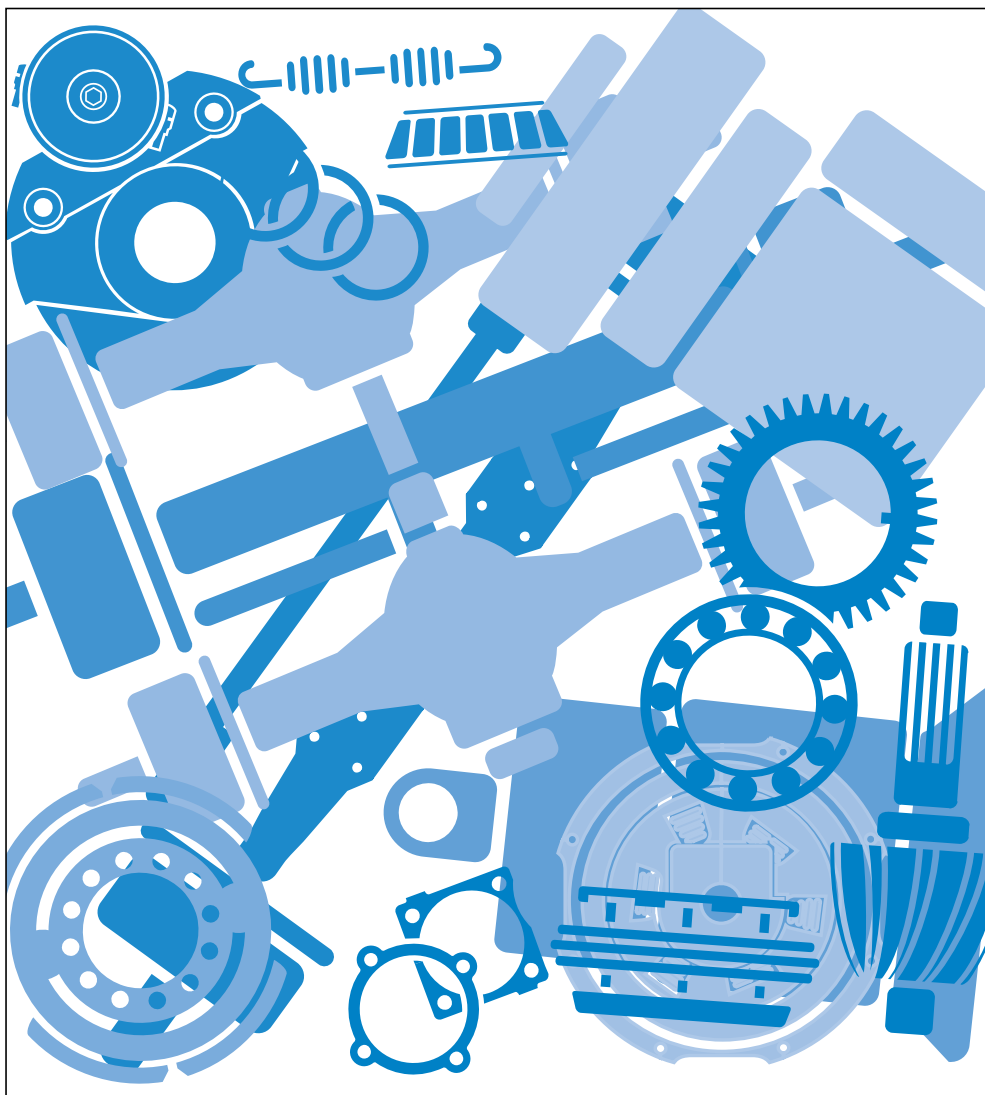
Eaton® Fuller® Automated Transmissions

AutoShift® Gen II Models



One Great Drivetrain from Two Great Companies

Quick Reference Guide TRMT-0062 March 2000



For the most current information, visit the Roadranger web site at www.roadranger.com

Full all 20 page(s) at: ManualPlace.com

Eaton Fuller Autoshift Gen II Quick Reference Guide (Trmt 0062)

Full download: <http://manualplace.com/download/eaton-fuller-autoshift-gen-ii-quick-reference-guide>

General Warnings:



Before starting a vehicle:

- Sit in the driver's seat
- Place shift lever in neutral
- Set the parking brake



Before working on a vehicle or leaving the cab with engine running:

- Place shift lever in neutral
- Set the parking brake
- Block the wheels



Do not release the parking brake or attempt to select a gear until the air pressure is at the correct level.



When parking the vehicle or leaving the cab:

- Place shift lever in neutral
- Set the parking brake



To avoid damage to the transmission during towing:

- Place shift lever in neutral
- Lift the drive wheels off of the ground or disconnect the driveline



Do not operate vehicle if alternator lamp is lit or if gauges indicate low voltage.

Suggested Tools:

Pressure Gauges:

- 0-100 PSI Air Pressure Gauge

O.E. Tool & Equipment Group/Kent-Moore SPX Corporation 1 (800) 520-2584

Kent-Moore

Part No.	Description
5505027	Volt/Ohm Meter (Standard commercially available VOM)
5505030	Hydraulic Test Kit

O.E. Tool & Equipment Group/Kent-Moore SPX Corporation 1 (800) 328-6657

Kent-Moore

Part No.	Description
J-43318	Eaton Test Adapter Kit
J-38351-B	Serial Link Adapter Kit (RP-1202)
J-42660	Parallel Data Module (RP-1210A)

Eaton Service Parts 1 (888) 880-0970 Ext. 1

Part No.	Description
MF-KIT-04	Data Link Tester
TBD	Service Ranger PC Based Service Tool Software

Related Publications

AutoShift

Installation Guide	Eaton TRIG-0062
Installation Guide AST	Eaton TRIG-0092
Service Manual	Eaton TRSM-0062

AutoShift

Driver Instructions	Eaton TRDR-0062
Driver Instructions AST	Eaton TRDR-0092
Autoshift II Direct Parts	
Shipment Program	Eaton TRIP-0062

For additional help 1-888-880-0970