

前 言

一、本备件目录汇编了“东风之星”EQ1030T47D-820 轻型商用车各总成零件的备件号、备件名称和数量以及各部总成机构的零件装配关系图，供用户购买备件或订货时使用，也可为使用部门了解汽车各个总成机构的零件装配关系提供参考。

二、EQ1030T47D-820 装备 CYQD32 发动机和尾气净化装置，排放达欧 II 法规。

三、在提出购买或订货时，备件号必须准确完整，并说明备件的备件名称、数量。

四、本备件目录主要是根据 2005 年 11 月以前的生产图纸编制的。由于产品结构的不断改进和完善，个别零件的结构、尺寸及备件号可能有变化，订货时请注明汽车的生产日期。

五、东风汽车股份有限公司商品研究院产品工程部使用文件科负责本备件目录的编制工作。未经书面同意本书的一部分或全部内容均不准翻印。

中华人民共和国
东风汽车股份有限公司
2005 年 11 月

使用说明

本备件目录汇编了东风 EQ1030T47D-820 轻型商用车各总成零件的备件号、备件名称和数量以及各部总成机构的零件装配关系图，供用户购买备件或订货参考。

1. 图号的编制

□××○○

□ --- 系统总成英文名称的代表字母

×× -- 汽车系统的字组号

○○ -- 字组号内零件分解图的顺序号

系统总成英文字母含义：

CYQD32--CYQD32 发动机

C---- 离合器

S---- 车架、悬架系统

F---- 前桥

W--- 车轮、备胎架

B---- 制动系统

CA-- 驾驶室

E-- 发动机系统

T-- 变速器

P-- 传动轴

R-- 后桥

ST-- 转向系统

EL-- 电器系统

OT-- 车箱、随车工具

2. 页码的编制

○○ - ××

○○ -- 总成或系统顺序号

×× -- 该总成或系统内零件图和文字的页码号

FOREWORD

1. This catalog includes all the spare parts with their numbers, names, and quantities for DONGFENG STAR EQ1030T47D-820 light commercial truck. Part of the installation relation figures of the assembly parts are also included to be the reference of the customer and using department.

2. EQ1030T47D-820 is equipped with CYQD32 engine and tail gas clean-up device, which has reached Euro II standard.

3. Before purchasing or booking, you have to note the exact and complete part number, part name and quantity.

4. This catalog is compiled according to the product drawing before November of 2005. Because of the continuously improving and perfecting of the product, the construction, size or part number of some parts may be changed, please note the product date of your vehicle when booking.

5. This catalog is compiled by the Application File Office, Test Department of Commercial Product R&D Institute of DONGFENG AUTOMOBILE CO., LTD., without the authorization, any part or the whole part of the book can be copied or printed.

PEOPLE'S REPUBLIC OF CHINA
DONGFENG AUTOMOBILE CO., LTD.
Nov., 2005

INSTRUCTION

This catalog compiles all spare parts with their numbers, names, quantities and figures of every assembly for EQ1030T47D-820 light commercial truck. It gives reference to our clients for purchasing or ordering the spare parts.

1. Edition of the figure mark:

□ × × ○ ○

□ --the letter represents the English name of the assembly system

× × --group number of the automobile system

○ ○ --ordered number of the part disassembly figure of the group number

The represented meaning of the system assembly letters

CYQD32--CYQD32 diesel engine

E--engine system

C----clutch

T--Transmission

S----frame & suspension system

P--propeller shaft

F----front axle

R--rear axle

W---wheel & spare tyre carrier

ST--steering system

B----brake system

EL--electric system

CA--cab

OT--cargo body & tools

2. Edition of the page number

○ ○ -- × ×

○ ○ --ordered number of the assembly or the system

× × --page number of the part figure and word of the assembly and system

1. 发动机

1.ENGINE

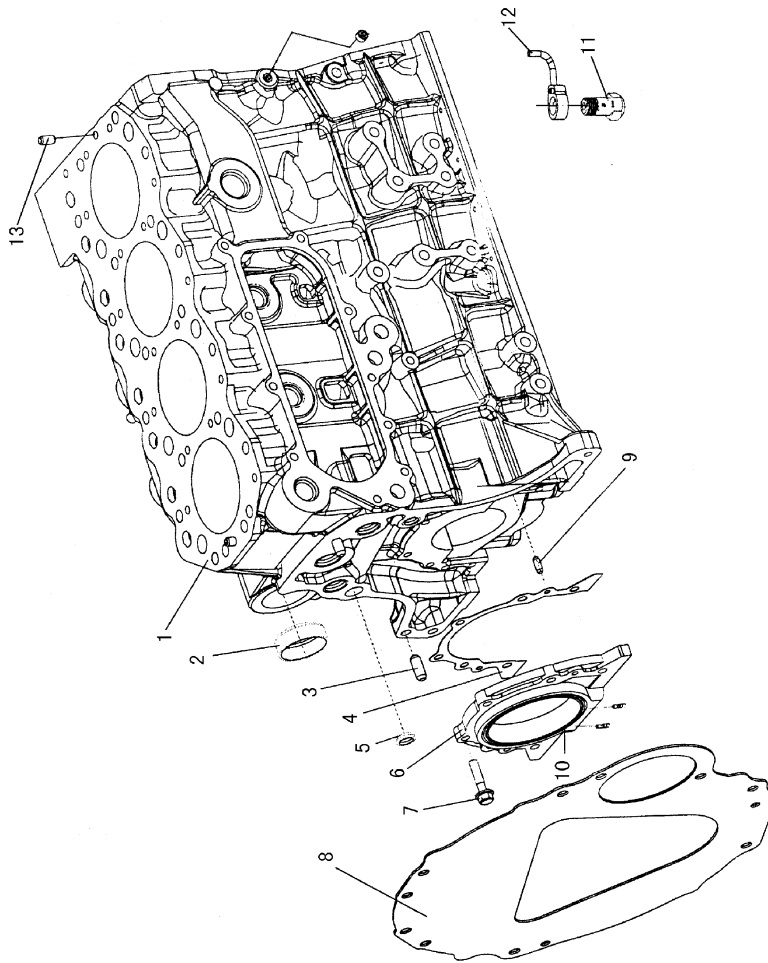
CYQD32-1 机体结合组 A.....	1-4
CYLINDER BLOCK ASSY A.....	1-4
CYQD32-1 机体结合组 B.....	1-5
CYLINDER BLOCK ASSY B.....	1-5
CYQD32-2 机体结合部	1-8
CYLINDER BLOCK UNIT	1-8
CYQD32-3 油底壳.....	1-10
OIL PAN	1-10
CYQD32-4 油尺结合部	1-12
DIPSTICK UNIT	1-12
CYQD32-5 缸盖结合组	1-14
CYLINDER HEAD ASSY	1-14
CYQD32-6 缸盖结合部	1-17
CYLINDER HEAD UNIT	1-17
CYQD32-7 活塞	1-19
PISTON.....	1-19
CYQD32-8 连杆	1-21
CONNECTING ROD.....	1-21
CYQD32-9 曲轴飞轮.....	1-23
CRANKSHAFT FLYWHEEL	1-23
CYQD32-10 凸轮轴.....	1-26
CAMSHAFT	1-26

CYQD32-11 摇臂总成	1-28
ROCKER ARM ASSY	1-28
CYQD32-12 摇臂室罩	1-30
ROCKER ARM CHAMBER COVER	1-30
CYQD32-13 齿轮室盖	1-33
GEAR CHAMBER COVER	1-33
CYQD32-14 进气管	1-36
INTAKE PIPE	1-36
CYQD32-15 排气管	1-39
EXHAUST PIPE	1-39
CYQD32-16 增压器结合组	1-42
TURBOCHARGER ASSY	1-42
CYQD32-17 真空泵	1-46
VACUUM PUMP	1-46
CYQD32-18 机油泵	1-48
OIL PUMP	1-48
CYQD32-19 机油滤清器	1-50
OIL FILTER	1-50
CYQD32-20 燃油管	1-52
FUEL PIPE	1-52
CYQD32-21 喷油器	1-55
INJECTOR	1-55
CYQD32-22 高压油泵	1-57
HIGH PRESSURE OIL PUMP	1-57
CYQD32-23 水泵及风扇	1-59
WATER PUMP AND FAN	1-59
CYQD32-24 节温器	1-61
THERMOSTAT	1-61
CYQD32-25 机油冷却器	1-64
OIL COOLER	1-64

CYQD32-26 预热及控制	1-66
PREHEATING AND CONTROL.....	1-66
CYQD32-27 发电机与起动机	1-68
ALTERNATOR AND STARTING MOTOR.....	1-68
CYQD32-28 涨紧轮总成	1-70
TENSIONER ASSY	1-70
CYQD32-29 助力泵结合组.....	1-72
BOOSTER ASSY	1-72
CYQD32-30 随机工具	1-74
TOOLS.....	1-74
CYQD32-31 废气再循环控制器.....	1-76
EGR CONTROL.....	1-76

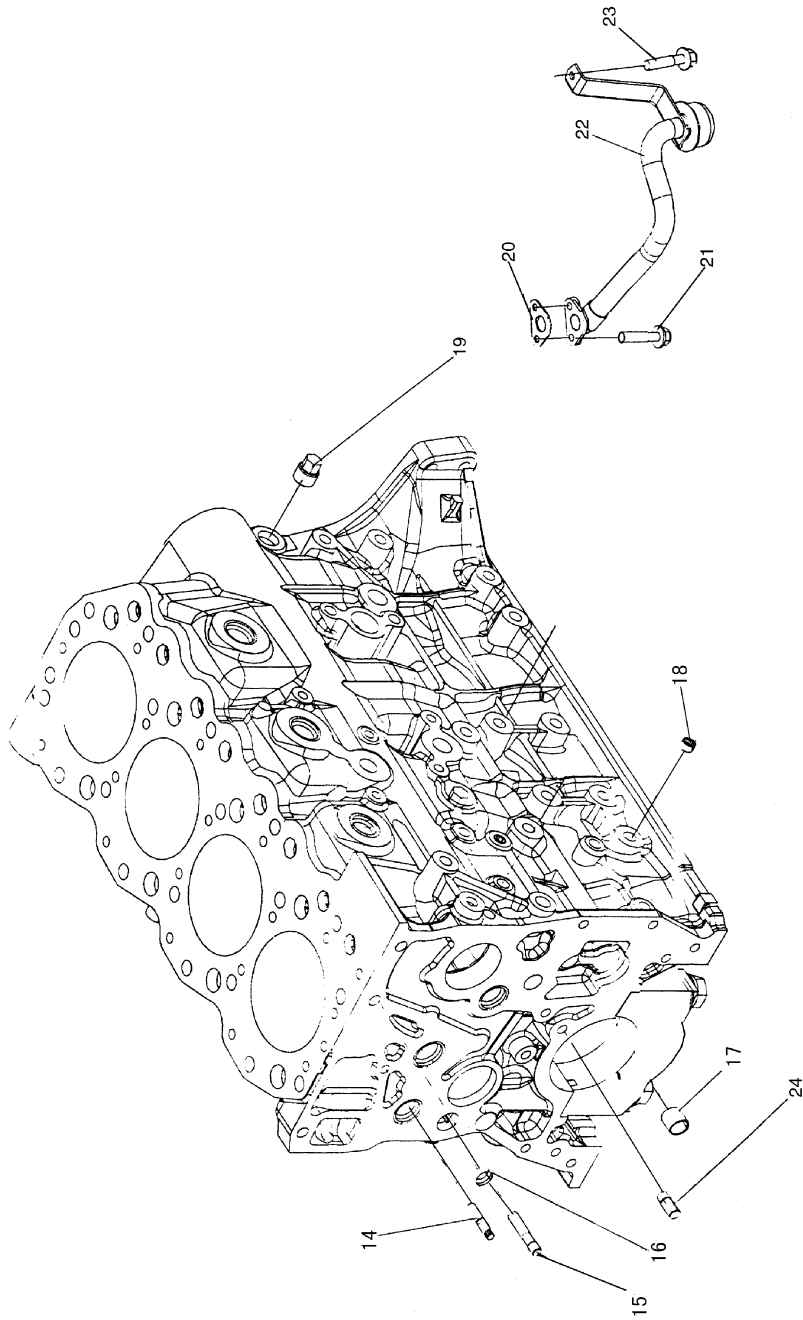
CYQD32-1

机体结合组 A
CYLINDER BLOCK ASSY A

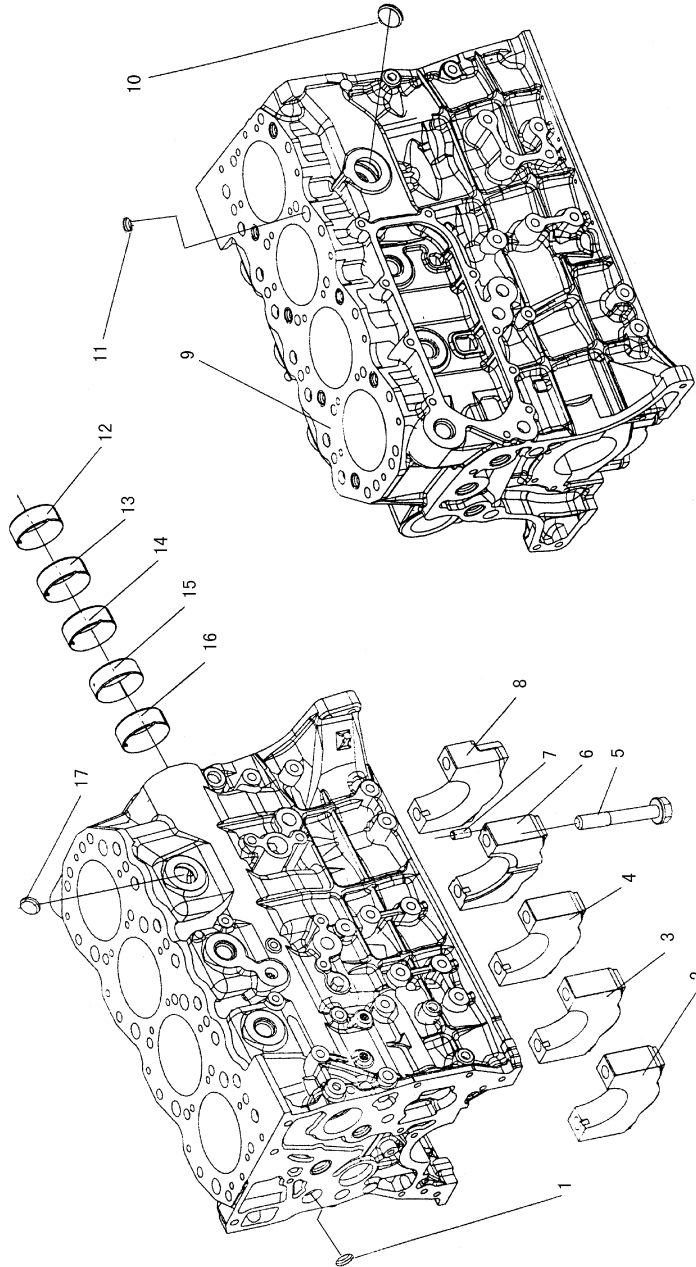


CYQD32-1

机体结合组 B
CYLINDER BLOCK ASSY B



CYQD32-1		机体结合组 CYLINDER BLOCK ASSY	
标号 NO.	12298 34N00	备 件 名 称 PART NAME & DESCRIPTION	数量 QTY.
1	11010 1W401	机体结合部 Cylinder block unit	1
2	11019 90002	堵片 Plug	1
3	30412 P5100	定位销 Dowel	4
4	12298 34N00	后油封垫 Washer-oil sealant, RR	1
5	01648 00224	碗形塞 Gasket--oil sealant, RR	3
6	12279 C3G06	后油封座 Plug-welch	1
7	08120 8251E	螺栓 Bolt	6
8	30411 02N03	后挡板 Plate ENG,RR	1
9	12313 10600	后油封座定位销 Dpwel--Pin	2
10	12279 C3G05	后油封 Oil sealant, RR	1
11	12123 Z5501	冷却喷嘴螺栓总成 Bolt ass'y	4
12	12124 1W401	冷却喷嘴总成 Jet ass'y--oil	4
13	11013 T9000	开口销 Cotter-pin	2
14	15213 43G01	双头螺柱 Stud	1
15	08227 07010	螺柱 Stud--Coarse	2
16	01648 00224	碗型塞 Plug--Welch	3
17	15075 43G00	机油泵衬套 Bush-- oil pump	1
18	01624 03004	丝堵 Plug--screw	4
19	11021 J2000	丝堵 Plug--screw	1
20	15053 80G00	吸油盘垫 Gasket--oil strainer	1



CYQD32-2

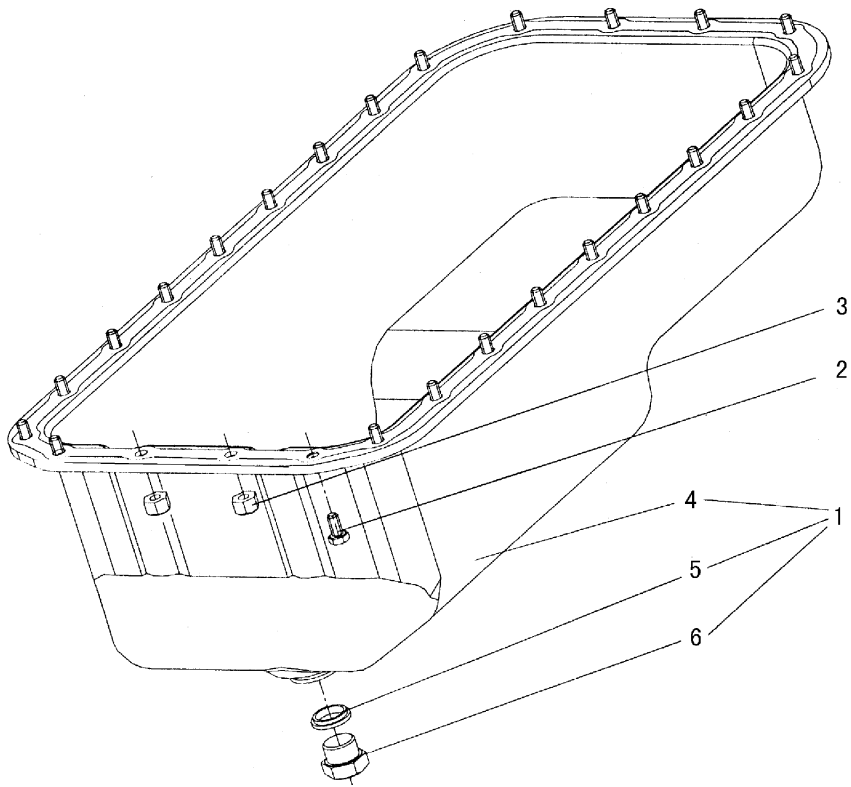
机体结合部

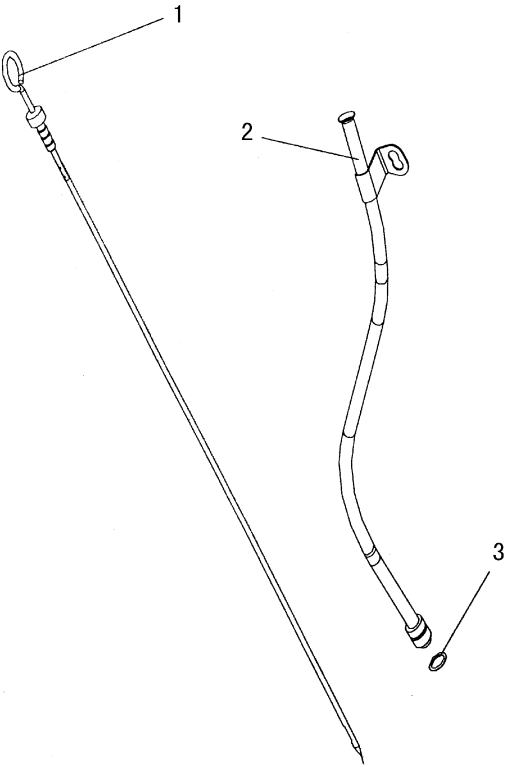
CYLINDER BLOCK UNIT

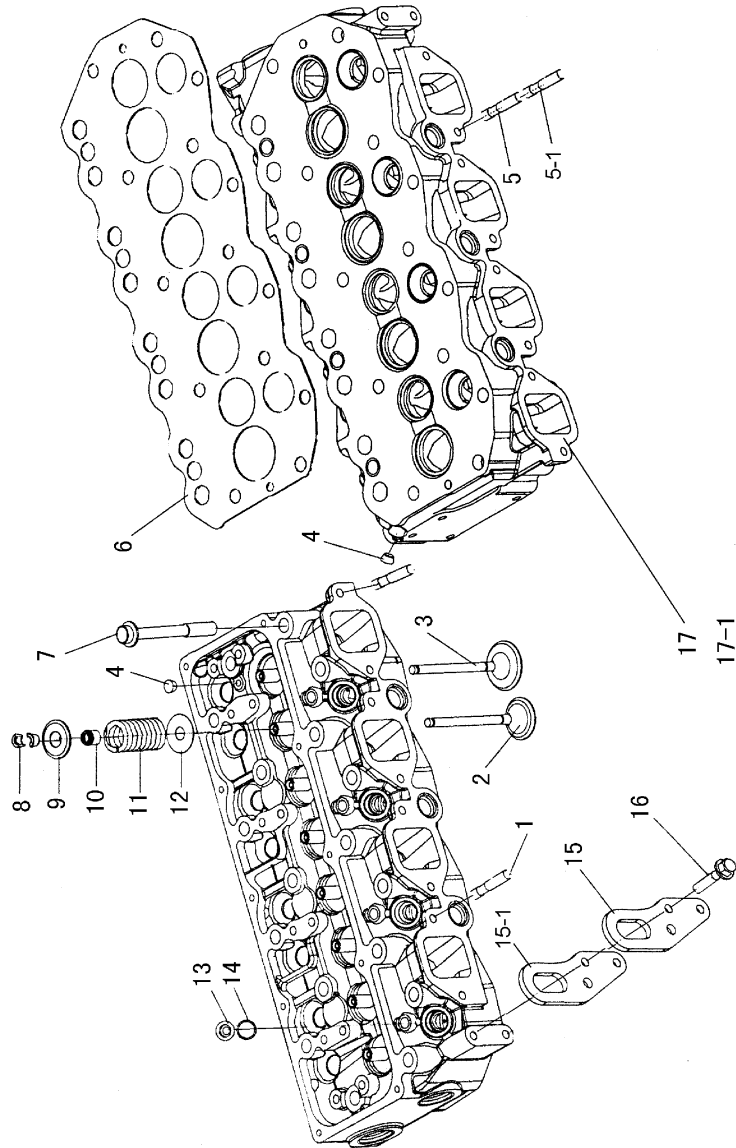
标号 NO.	备 件 号 PART NO.	备 件 名 称 PART NAME & DESCRIPTION	数量 QTY.
1	01648 00024	碗型塞 Plug--welch	4
2	12282 0W800	前主轴承盖 Cap--main bearing, FR	1
3	12283 0W800	中心主轴承盖 Cap--main bearing, CTR	1
4	12284 0W800	中间主轴承盖 Cap--main bearing, MID	1
5	12293 0W800	主轴承盖螺栓 Bolt--bearing cap	10
6	12285 0W800	中间主轴承盖 Cap--main bearing, MID	1
7	01522 05104	主轴承盖定位销 Dowel--mainbearing cap	1
8	12286 0W800	后主轴承盖 Cap--main bearing, RR	1
9	11011 1W401	机体 Block--cylinder	1
10	01648 00154	碗型塞 Plug--welch	1
11	01648 00224	碗型塞 Plug--welch	8
12	13009 43G00	凸轮轴衬套 Bush--camshaft. NO5	1
13	13008 43G00	凸轮轴衬套 Bush--camshaft. NO4	1
14	13007 43G00	凸轮轴衬套 Bush--camshaft. NO3	1
15	13006 43G00	凸轮轴衬套 Bush--camshaft. NO2	1
16	13005 51N00	凸轮轴衬套 Bush--camshaft. NO1	1
17	01648 00084	碗型塞 Plug--welch	9

CYQD32-3

油底壳
OIL PAN







CYQD32-5

缸盖结合组

CYLINDER HEAD ASSY

标号 NO.	备 件 号 PART NO.	备 件 名 称 PART NAME & DESCRIPTION	数量 QTY.
1	08223 82210	螺柱 Stud M8	2
2	13202 1W400	排气门 Exhaust valve	4
3	13201 1W400	进气门 Intake valve	4
4	00933 20650	锥堵 Plug--taper	2
5	08227 03040	排气管螺柱 Stud--exhaust pipe	8
5-1	14064 31N00	排气管螺柱 Stud--exhaust pipe	8
6	11044 1W402	缸盖垫总成 Gasket ass'y	1
	11044 1W400	缸盖垫总成 Gasket ass'y	1
	11044 1W401	缸盖垫总成 Gasket ass'y	1
7	11056 09D61	缸盖螺栓 Bolt--cylinder head	18
8	13208 Z5500	气门锁夹 Rotator--valve	16
9	13209 43G01	气门弹簧上座 Retainer--valve spring, upper	8
10	13207 V1700	气门导管油封 Seal--valve stem	8
11	13203 54T01	气门弹簧 Valve spring	8
12	13206 31N00	气门弹簧下座 Retainer--valve spring, lower	8
13	16650 43G01	喷油器护套 Protective sleeve--nozzle	4
14	16625 43G02	喷油器垫圈 Washer--nozzle	4
15	10006 43G00	后吊耳 Engine slinger, RR	1
15-1	10006 37N00	后吊耳 Engine slinger, RR	1
16	81130 8201A	螺栓 Bolt	2
17	11041 6T700	缸盖结合部 Cylinder head	1

