

VIN PLATE DECODING INFORMATION

1	2	3	4	5	6	7	8	9	10	11	12 thru 17
Country	Make	Vehicle Type	Other	Line	Series	Body Style	Engine	Check Digit	Model Year	Assy. Plant	Sequence No.

The following table interprets the VIN Plate position shown above.

Position	Interpretation	Codes = Description
1	Country of Origin	1 = Built in U.S by DaimlerChrysler
2	Assembler	B = Dodge
3	Vehicle Type	7 = Truck 4 = Multipurpose Passenger Vehicle
4	GVWR & Pass. Safety	D = 0-1.360 kg (0-3.000 lbs) E = 1.361-1.814 kg (3.001-4.000 lbs) F = 1.815-2.267 kg (4.001-5.000 lbs) G = 2.268-2721 kg (5.001-6.000 lbs) H = 2.722-3.175 kg (6.001-7.000 lbs) J = 3.176-3.628 kg (7.001-8.000 lbs) K = 3.629-4.082 kg (8.001-9000 lbs) L = 4.083-4535 kg (9.001-10.000 lbs) M = 4.536-6.350 kg (10.001-14.000 lbs)
5	Vehicle Line	R = Durango 4x2 S = Durango 4x4
6	Series	2 = Durango 2 = Durango and Durango SLT
7	Body Style	8 = Sport Utility 8 = Sport Utility 4 Door
8	Engine	X = 3.9L 6 Cyl. (EHC) Y = 5.2L 8 Cyl. (ELF) Z = 5.9L 8 Cyl. Gasoline (MPI) (EML)
9	Check Digit	0 = Check Digit 0 = Check Digit 0 = Check Digit
10	Model Year	1 = 2001 W = 1998 X = 1999
11	Assembly Plant	F = Newark Assembly
12 thru 17	Vehicle Build Sequence	Model Year Assembly Sequence

Group - 2

Front Suspension & Drive

Group - 2 Front Suspension & Drive

Group-Fig. No.

Illustration Title

Front Suspension

Suspension,Control Arms,Springs,Shocks,Knuckle-DN1 Fig. 2 - 110
 Stabilizer Bar,Front-DN1 Fig. 2 - 120
 Suspension,Control Arms,Shocks,Knuckle-DN5 Fig. 2 - 130
 Stabilizer Bar and Torsion Bar-DN5..... Fig. 2 - 140

Front Axle Drive Shafts

Shaft, Front Drive Axle..... Fig. 2 - 210

Front Axle Housing

Housing,Front Axle and Vent..... Fig. 2 - 310

Front Axle Assembly

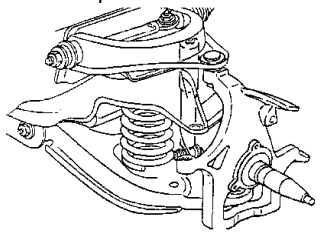
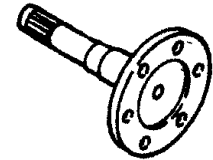
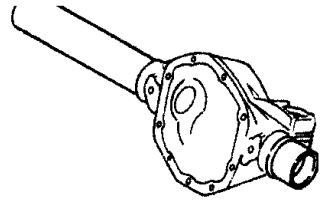
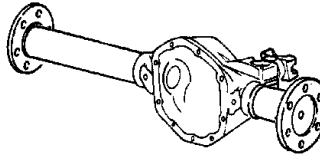
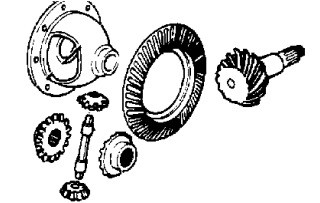
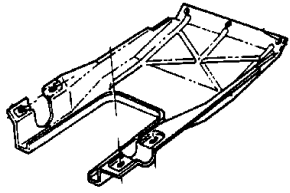
Axle Assembly, Front Fig. 2 - 410

Front Axle Differential

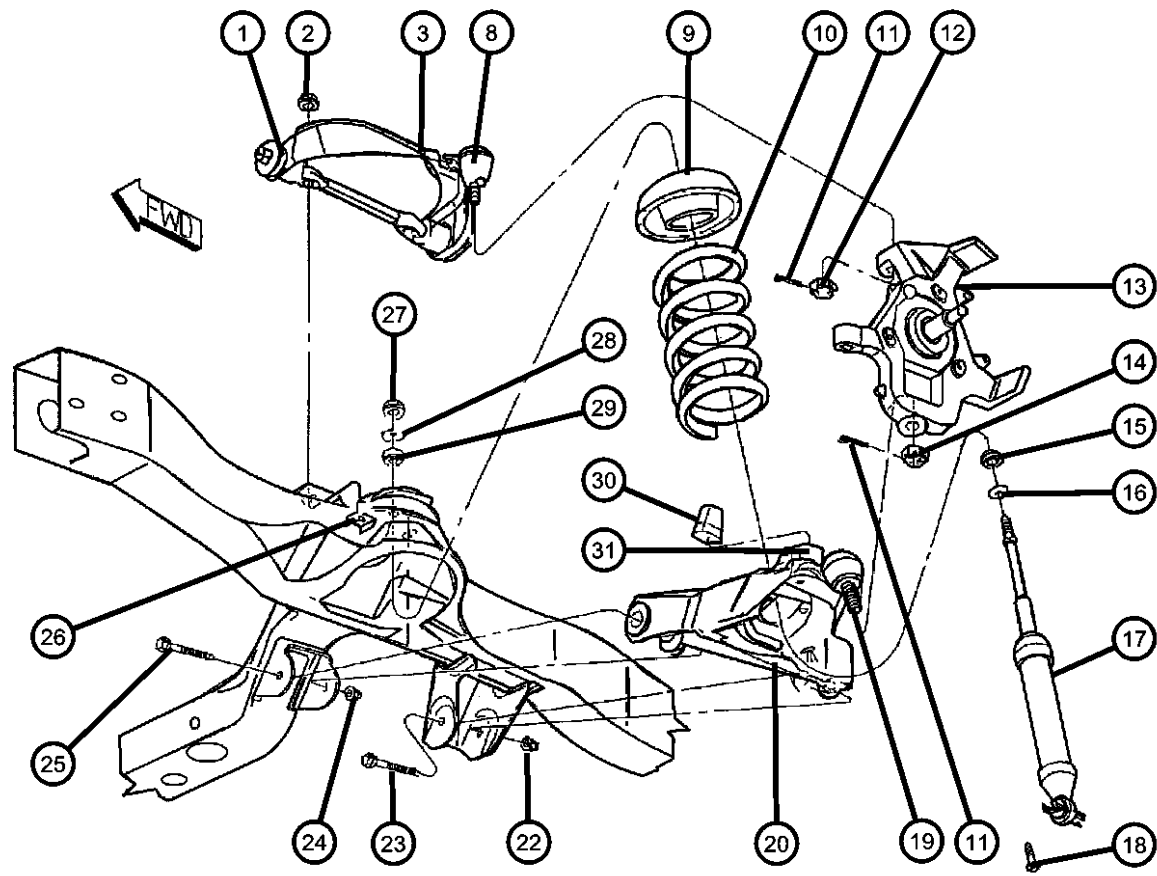
Differential,Front Axle..... Fig. 2 - 610

Front Axle Skid Plate

Skid Plate, Front Axle..... Fig. 2 - 810

<p>002-100 Front Suspension</p> 	<p>002-200 Front Axle Drive Shafts</p> 	<p>002-300 Front Axle Housing</p> 	<p>002-400 Front Axle Assembly</p> 
<p>002-600 Front Axle Differential</p> 	<p>002-800 Front Axle Skid Plate</p> 		

Suspension,Control Arms,Springs,Shocks,Knuckle-DN1
Figure 2-110



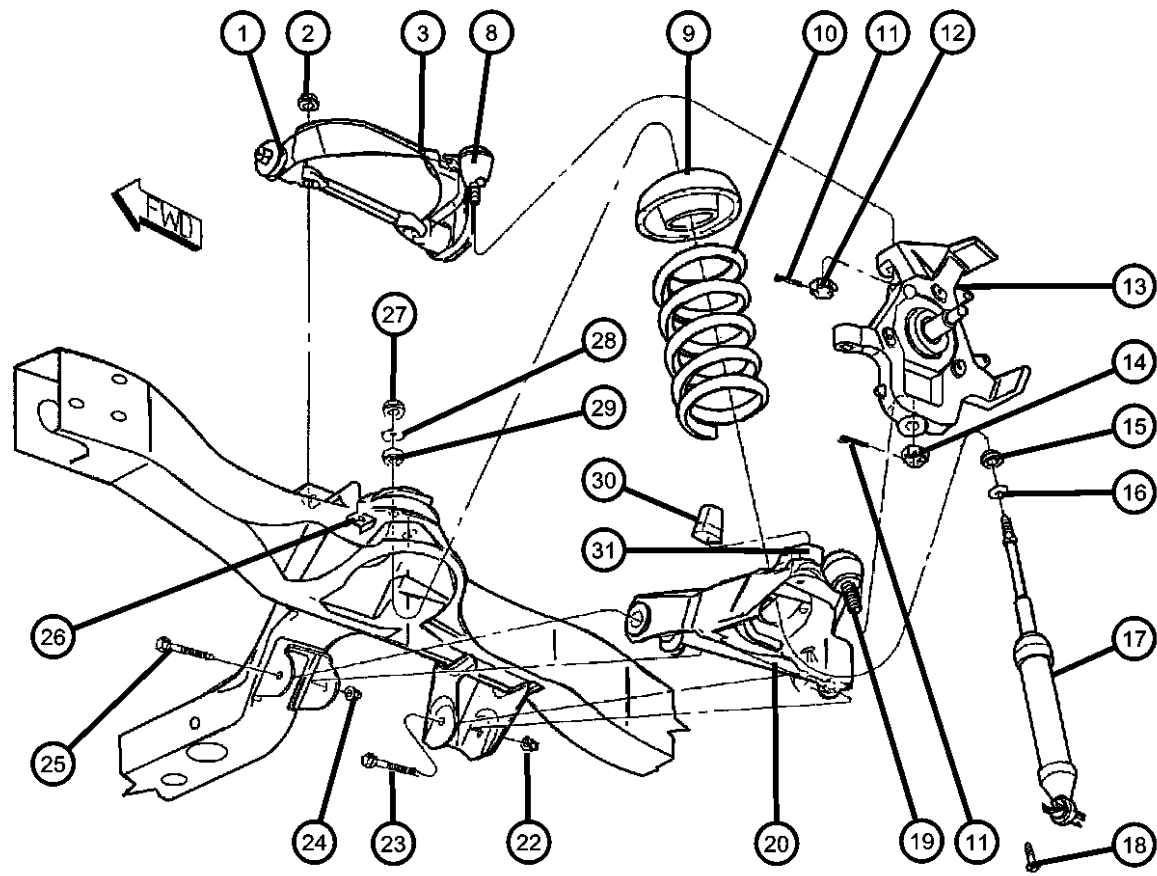
ITEM	PART NUMBER	QTY	LINE	SERIES	BODY	ENGINE	TRANS	TRIM	DESCRIPTION
Note: EH0 = All 3.9L 6 Cyl Gas Engines EL0 = All 5.2L 8 Cyl Gas Engines EM0 = All 5.9L 8 Cyl Gas Engines UCA=Upper Control Arm LCA=Lower Control Arm Check VIN Number for proper Sales Code on Front Springs.									
1	52037673	4	1						BUSHING, Control ArmUpper
2	06036048AA	4	1						NUT, Hex Lock, .562 - 18, UCA Pivot Bar Mounting, Upper Control Arm
3	52039090	2	1						ARM, Control, Includes All Parts, Upper
-4	52038241	4	1						WASHER, Control Arm ShaftUpper
-5	06503320	4	1						NUT, Hex Lock, M15x2, Shaft, Upper Control Arm
-6	52038745	2	1						BUMPER, Suspension Jounce, UCA, Upper Control Arm
-7	06504317	2	1						NUT, Hex, Jounce Bumper Mounting, Upper Control Arm
8	05104788AA	2	1						BALL JOINT PACKAGE, Upper Control Arm
9	52037718	2	1						ISOLATOR, SpringUpper
10									SPRING, Front Coil
	52039246	1	1						[ZAG,ZNG]
	52039247	1	1						[ZAH,ZNH]
	52039248	1	1						[ZAJ,ZNJ]
	52039249	1	1						[ZAK,ZNK]
11	00120123	2							PIN, Cotter, UCA and LCA Ball Joint Stud
12	06502749	2							NUT, Castle, M14x1.5, Ball Joint Mounting, Upper Control Arm
13									KNUCKLE, Front
	52039374	1	1						Right
	52039375	1	1						Left
14	06502858	2	1						NUT, Hex, LCA Ball Joint Mounting, Lower Control Arm
15	52039478AA	4							GROMMET, Shock AbsorberLower
16	52038809	2							RETAINER, Shock AbsorberLower
17									SHOCK ABSORBER PACKAGE, Suspension, Front
	05014143AC	2	1			EH0			

DURANGO (DN)

SERIES	LINE	BODY	ENGINE	TRANSMISSION
H = HIGHLINE	1 = Lt. Duty DODGE 2WD	74 = SPORT UTILITY 4-DR	EHC = ENGINE - "MAGNUM" 3.9L SMPI V6	DGK = TRANSMISSION - 4-SPD. AUTOMATIC,42RE
L = LOWLINE	5 = Lt. Duty DODGE 4WD		ELF = ENGINE - 5.2L V8 MPI	DGT = TRANSMISSION - 4-SPD. AUTOMATIC,46RE
M = MEDIUM			EML = ENGINE - 5.9L V8 MPI	DGW = TRANSMISSION - 4-SPD. AUTOMATIC,44RE
P = PREMIUM				
X = SPECIAL				

AR = use ase required - = Non illustrated part

Suspension,Control Arms,Springs,Shocks,Knuckle-DN1
Figure 2-110



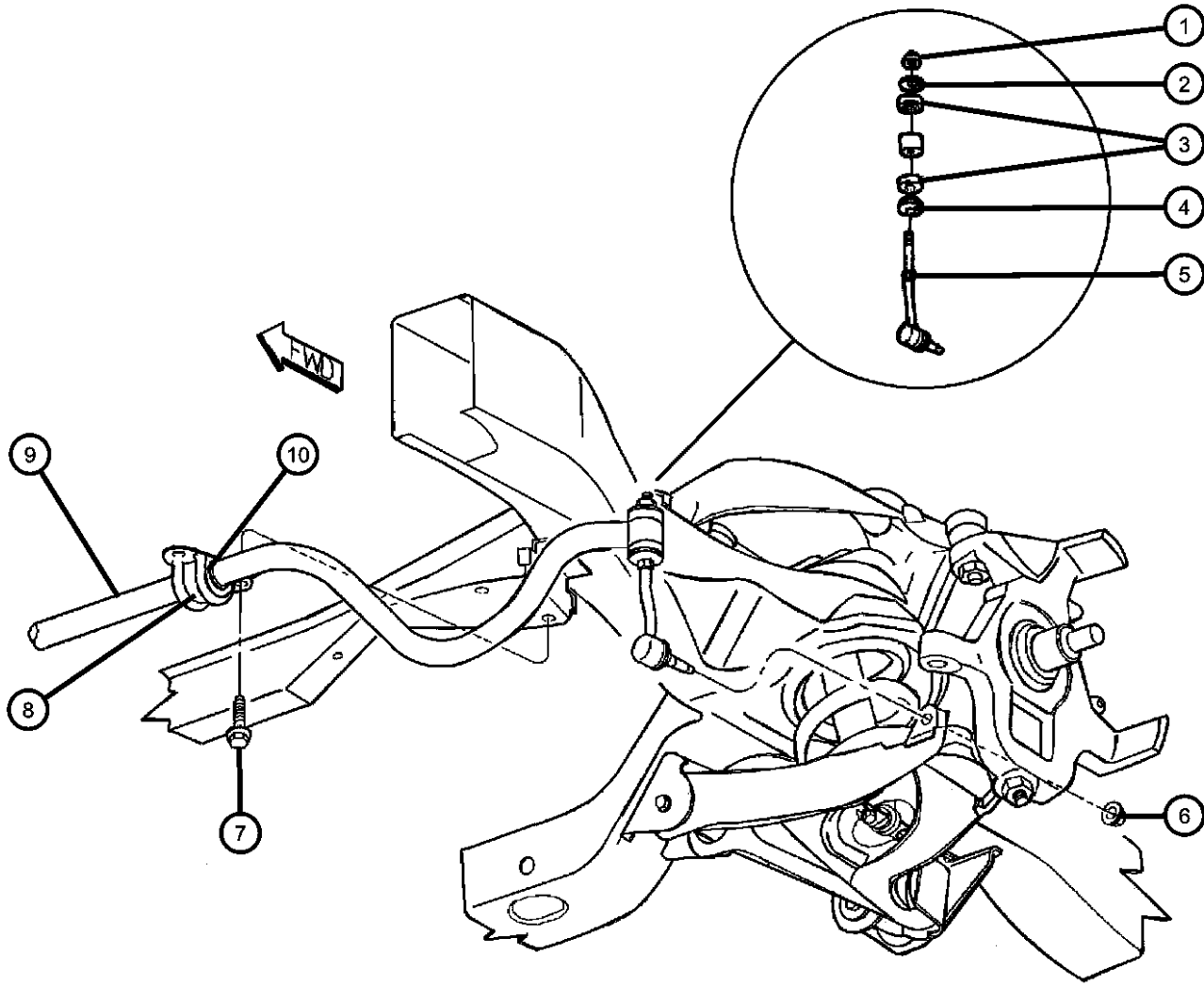
ITEM	PART NUMBER	QTY	LINE	SERIES	BODY	ENGINE	TRANS	TRIM	DESCRIPTION
	0SGR5609								Rancho Shock
	0SG23318								Mopar V-Line Alternative Part
	05014144AB	2	1			ELO, EMO			
	0SGR5609								Rancho Shock
	0SG23318								Mopar V-Line Alternative Part
18	06503792	4	1						SCREW AND WASHER, Hex Head, M8-1.25x32.00, Shock Mounting, Lower
19	05103142AA	1	1						BALL JOINT PACKAGE, Lower Control Arm Right or Left
20									ARM, Control
	52059018	1	1						Right, Lower
	52059019	1	1						Left, Lower
-21									BUSHING, Lower Control Arm
	04322358	1	1						Front
	04322359	1	1						Rear
22	06502697	2	1						NUT, Hex Flange Lock, M12x1.75, Rear Mounting Bolt, Lower Control Arm
23	06503965	2	1						SCREW, Hex Flange Head, Rear Pivot, Lower Control Arm
24	06502698	2	1						NUT, Hex Flange Lock, Front Mounting Bolt, Lower Control Arm
25	06505599AA	2	1						SCREW, Pilot Point, Front Pivot, Lower Control Arm
26	06036049AA	4	1						BOLT AND RETAINER, .562-18x2.07, Pivot Bar Mounting, Upper Control Arm
27	06504728	2							NUT AND WASHER, M10x1.5, Shock Mounting, Upper
28	52038805	2							RETAINER, Shock AbsorberUpper
29	52039478AA	4							GROMMET, Shock AbsorberUpper
30	52106438AB	2	1						BUMPER, JounceUpper
31	52038815	1	1						CUP, Jounce Bumper, Front Frame

DURANGO (DN)

SERIES	LINE	BODY	ENGINE	TRANSMISSION
H = HIGHLINE	1 = Lt. Duty DODGE 2WD	74 = SPORT UTILITY 4-DR	EHC = ENGINE - "MAGNUM" 3.9L SMPI V6	DGK = TRANSMISSION - 4-SPD. AUTOMATIC,42RE
L = LOWLINE	5 = Lt. Duty DODGE 4WD		ELF = ENGINE - 5.2L V8 MPI	DGT = TRANSMISSION - 4-SPD. AUTOMATIC,46RE
M = MEDIUM			EML = ENGINE - 5.9L V8 MPI	DGW = TRANSMISSION - 4-SPD. AUTOMATIC,44RE
P = PREMIUM				
X = SPECIAL				

AR = use ase required - = Non illustrated part

Stabilizer Bar,Front-DN1
Figure 2-120



ITEM	PART NUMBER	QTY	LINE	SERIES	BODY	ENGINE	TRANS	TRIM	DESCRIPTION
------	-------------	-----	------	--------	------	--------	-------	------	-------------

Note: EP0=2.5L 4 Cylinder Gas—EH0= 3.9L V-6 Gas—EM0=5.9L Cylinder Gas—EV0= 4.7L V-8 Gas

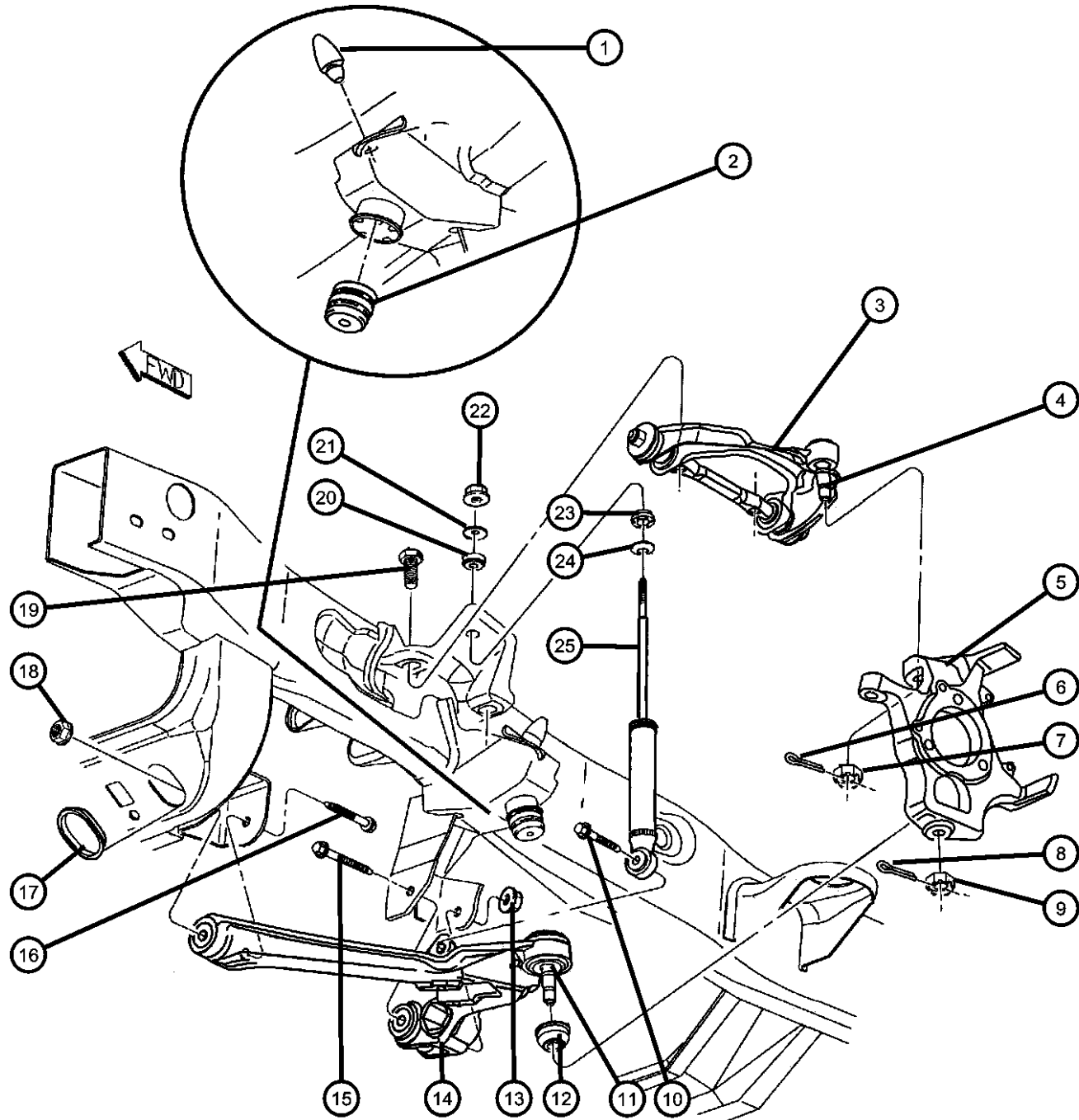
1	06101687	2	1						NUT, Hex Lock, M10x1.5
2									RETAINER, Stabilizer Bar Grommet
	52038115	2	1						Large Hole
	52038116	2	1						Small Hole
3	52037916	4	1						GROMMET, Link
4	52038736	2	1						LINK, Sway Eliminator
5	06101696	2	1						NUT, Stabilizer Link to LCA Mounting
6	06504010	4	1						SCREW AND WASHER, Hex Head, M10x1.50x35, Stabilizer Retainer to Frame
7	52037710	2	1						RETAINER, Stabilizer Bar Grommet, Bushing
8	52106487AA	1	1						BAR, Front Sway
9	52106492AA	2	1						BUSHING, Stabilizer Bar

DURANGO (DN)

SERIES	LINE	BODY	ENGINE	TRANSMISSION
H = HIGHLINE	1 = Lt. Duty DODGE 2WD	74 = SPORT UTILITY 4-DR	EHC = ENGINE - "MAGNUM" 3.9L SMPI V6	DGK = TRANSMISSION - 4-SPD. AUTOMATIC,42RE
L = LOWLINE	5 = Lt. Duty DODGE 4WD		ELF = ENGINE - 5.2L V8 MPI	DGT = TRANSMISSION - 4-SPD. AUTOMATIC,46RE
M = MEDIUM			EML = ENGINE - 5.9L V8 MPI	DGW = TRANSMISSION - 4-SPD. AUTOMATIC,44RE
P = PREMIUM				
X = SPECIAL				

AR = use ase required - = Non illustrated part

Suspension,Control Arms,Shocks,Knuckle-DN5
Figure 2-130



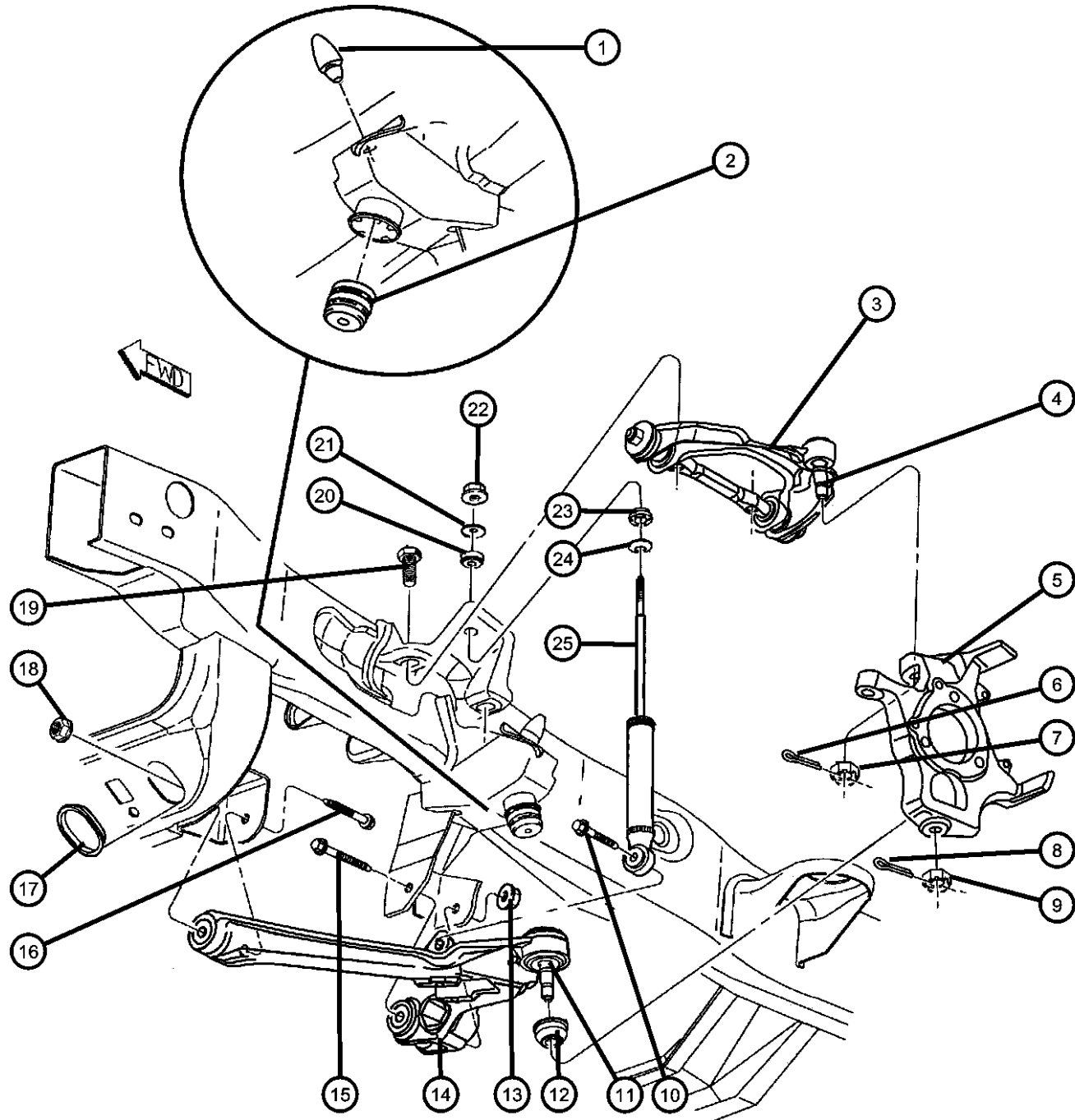
ITEM	PART NUMBER	QTY	LINE	SERIES	BODY	ENGINE	TRANS	TRIM	DESCRIPTION
Note: EH0 = All 3.9L 6 Cyl Gas Engines EL0 = All 5.2L 8 Cyl Gas Engines EM0 = All 5.9L 8 Cyl Gas Engines UCA = Upper Control Arm LCA = Lower Control Arm									
1	52038781	2	5						BUMPER, Jounce, UCA
2	52106122AA	2	5						BUMPER, Jounce, Front Suspension
3									ARM, Control
	52039410AB	1	5						Includes All Parts on Arm, Right
	52039411AB	1	5						Includes All Parts on Arm, Left
4	05104788AA	1	5						BALL JOINT PACKAGE, Upper Control Arm Right or Left
5									KNUCKLE, Front
	52039450AB	1	5						Right
	52039451AB	1	5						Left
6	00120123	2							PIN, Cotter, Upper Ball Joint Stud
7	06502749	2	5						NUT, Castle, M14x1.5, Upper Ball Joint Mounting
8	00120123	2	5						PIN, Cotter, Lower Ball Joint Stud
9	06504705	2	5						NUT, Hex, M14-2, Lower Ball Joint Mounting
10	06101971	2	5						SCREW AND WASHER, Shock Mounting, Lower
11	05013760AA	1	5						BALL JOINT PACKAGE, Lower Control Arm Right or Left
12	02269214	2	5						SEAL, Ball Joint Lower
13	06502698	2	5						NUT, Hex Flange Lock, LCA Rear Mounting Bolt
14									ARM, Control
	52038902AC	1	5						Right
	52038903AC	1	5						Left
15	06504109	2	5						SCREW, Hex Flange Head, M14x2x110, LCA Rear Mounting
16	06503993	2	5						SCREW, Hex Flange Head, M12x1.75x110.00, LCA Front Pivot Mounting
17	52038858	2	5						PLUG, Front Steering Gear Support Crossmember
18	06502697	2	5						NUT, Hex Flange Lock, M12x1.75, LCA Front Pivot Bolt Mounting

DURANGO (DN)

SERIES	LINE	BODY	ENGINE	TRANSMISSION
H = HIGHLINE	1 = Lt. Duty DODGE 2WD	74 = SPORT UTILITY 4-DR	EHC = ENGINE - "MAGNUM" 3.9L SMPI V6	DGK = TRANSMISSION - 4-SPD. AUTOMATIC, 42RE
L = LOWLINE	5 = Lt. Duty DODGE 4WD		ELF = ENGINE - 5.2L V8 MPI	DGT = TRANSMISSION - 4-SPD. AUTOMATIC, 46RE
M = MEDIUM			EML = ENGINE - 5.9L V8 MPI	DGW = TRANSMISSION - 4-SPD. AUTOMATIC, 44RE
P = PREMIUM				
X = SPECIAL				

AR = use ase required - = Non illustrated part

Suspension,Control Arms,Shocks,Knuckle-DN5
Figure 2-130



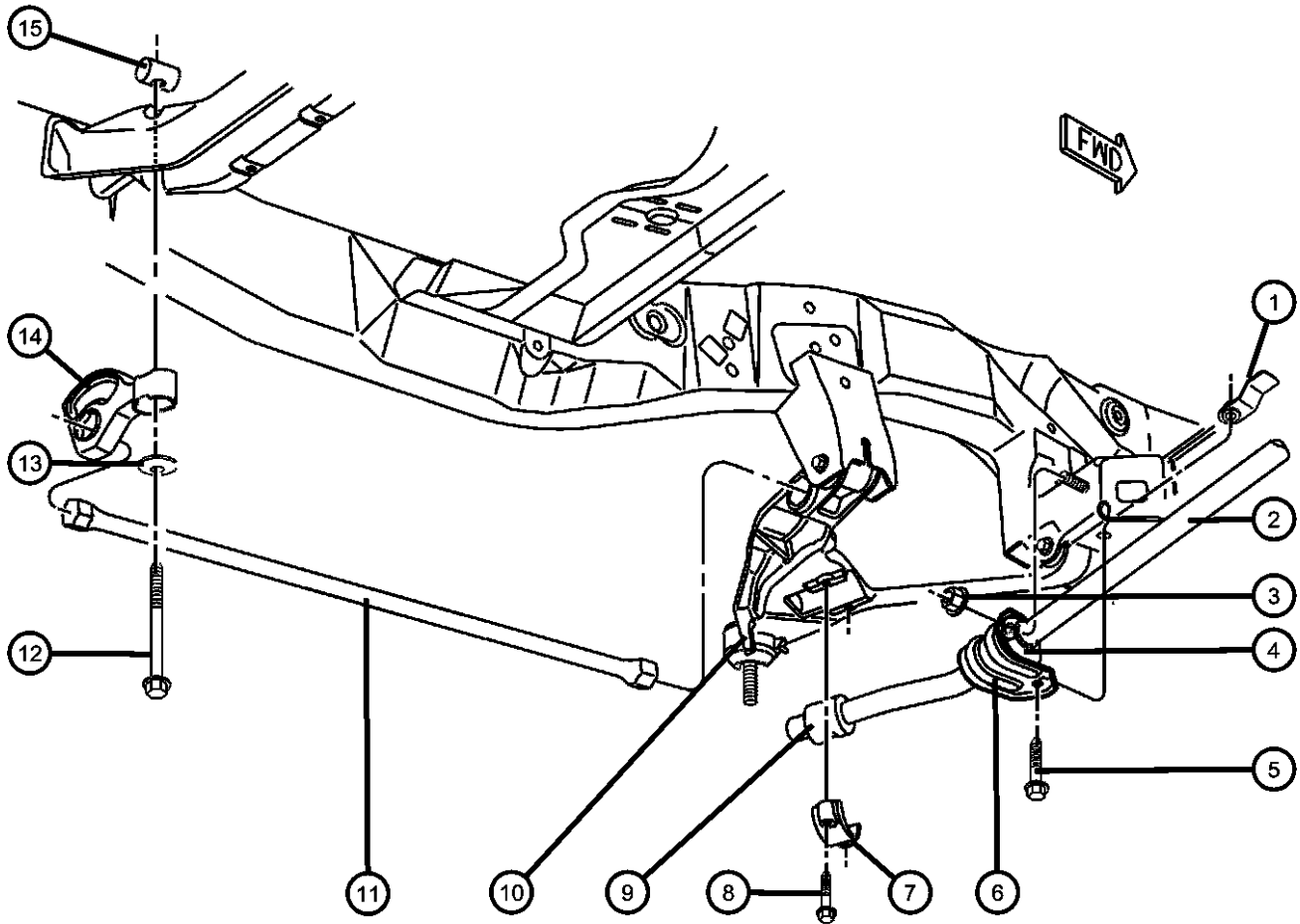
ITEM	PART NUMBER	QTY	LINE	SERIES	BODY	ENGINE	TRANS	TRIM	DESCRIPTION
19	06505393AA	4	5						SCREW AND WASHER, Hex Head, M14X2.00X45.00, UCA Pivot Bar Mounting
20	52039478AA	4							GROMMET, Shock AbsorberUpper
21	52038805	2							RETAINER, Shock AbsorberUpper
22	06504728	2							NUT AND WASHER, M10x1.5Upper
23	52039478AA	4							GROMMET, Shock AbsorberLower
24	52038809	2							RETAINER, Shock AbsorberLower
25									SHOCK ABSORBER PACKAGE, Suspension, Front
	04897393AB	2	5			EL0, EM0			
	05014593AB	2	5			EH0			

DURANGO (DN)

SERIES	LINE	BODY	ENGINE	TRANSMISSION
H = HIGHLINE	1 = Lt. Duty DODGE 2WD	74 = SPORT UTILITY 4-DR	EHC = ENGINE - "MAGNUM" 3.9L SMPI V6	DGK = TRANSMISSION - 4-SPD. AUTOMATIC,42RE
L = LOWLINE	5 = Lt. Duty DODGE 4WD		ELF = ENGINE - 5.2L V8 MPI	DGT = TRANSMISSION - 4-SPD. AUTOMATIC,46RE
M = MEDIUM			EML = ENGINE - 5.9L V8 MPI	DGW = TRANSMISSION - 4-SPD. AUTOMATIC,44RE
P = PREMIUM				
X = SPECIAL				

AR = use ase required - = Non illustrated part

Stabilizer Bar and Torsion Bar-DN5
Figure 2-140



ITEM	PART NUMBER	QTY	LINE	SERIES	BODY	ENGINE	TRANS	TRIM	DESCRIPTION
1	06504413	2	5						NUT AND RETAINER, Hex Flange Locking, M12x1.75, Sway Bar Mounting, Inner
2	52106110AA	1	5						BAR, Front Sway
3	52106110AA	1							NUT, Hex Lock, M14 x 2.00, (NOT SERVICED)
4	52106111AA	2	5						BUSHING, Stabilizer Bar
5	06502559	2	5						SCREW, Hex Flange Head, M12x1.75x40.00, Sway Bar Retainer to Crossmember
6	52106103AA	2	5						RETAINER, Stabilizer Bar GrommetInner
7	52038825	2	5						CLAMP, Stabilizer Shaft BushingOuter
8	06101980	4	5						SCREW AND WASHER, Hex Head, M8x1.25x45, Stabilizer Clamp Mounting, Outer
9	52106114AB	2	5						CUSHION, Sway EliminatorOuter
10									ARM, Control
	52038902AC	1	5						Right, Lower
	52038903AC	1	5						Left, Lower
11									BAR, Torsion
	52106178AA	1	5						Right
	52106179AA	1	5						Left
12	06035925AA	2	5						SCREW, Hex Head, .625-11x5.75, Torsion Bar Adjusting
13	04014100	2	5						BEARING, Torsion Bar, Torsion Bar Adjusting Screw
14	52038973	2	5						ANCHOR, Torsion Bar, Torsion Bar Adjusting Screw
15	04322561	2	5						SWIVEL, Torsion Bar, Adjustment

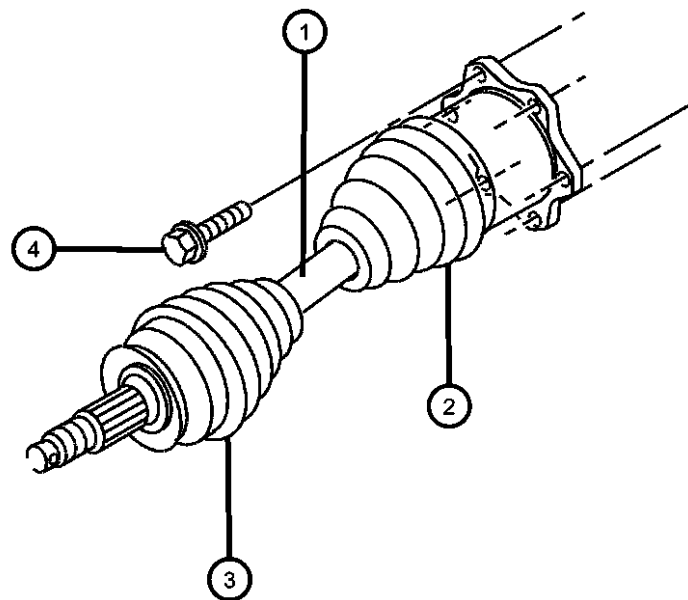
DURANGO (DN)

SERIES	LINE	BODY	ENGINE	TRANSMISSION
H = HIGHLINE	1 = Lt. Duty DODGE 2WD	74 = SPORT UTILITY 4-DR	EHC = ENGINE - "MAGNUM" 3.9L SMPI V6	DGK = TRANSMISSION - 4-SPD. AUTOMATIC,42RE
L = LOWLINE	5 = Lt. Duty DODGE 4WD		ELF = ENGINE - 5.2L V8 MPI	DGT = TRANSMISSION - 4-SPD. AUTOMATIC,46RE
M = MEDIUM			EML = ENGINE - 5.9L V8 MPI	DGW = TRANSMISSION - 4-SPD. AUTOMATIC,44RE
P = PREMIUM				
X = SPECIAL				

AR = use ase required - = Non illustrated part

**Shaft, Front Drive Axle
Figure 2-210**

ITEM	PART NUMBER	QTY	LINE	SERIES	BODY	ENGINE	TRANS	TRIM	DESCRIPTION
1	04882691 R2073976ac	2	5						SHAFT, Axle Half, Front Drive Mopar Remanufactured Part
2	04883326	2	5						BOOT KIT, Half Shaft, Inner
3	04883327	2	5						BOOT KIT, Half Shaft, Outer
4	06033288	12	5						Bolt, Hex Flange Head, .437-14x1.00, Shaft to Axle Mounting



DURANGO (DN)

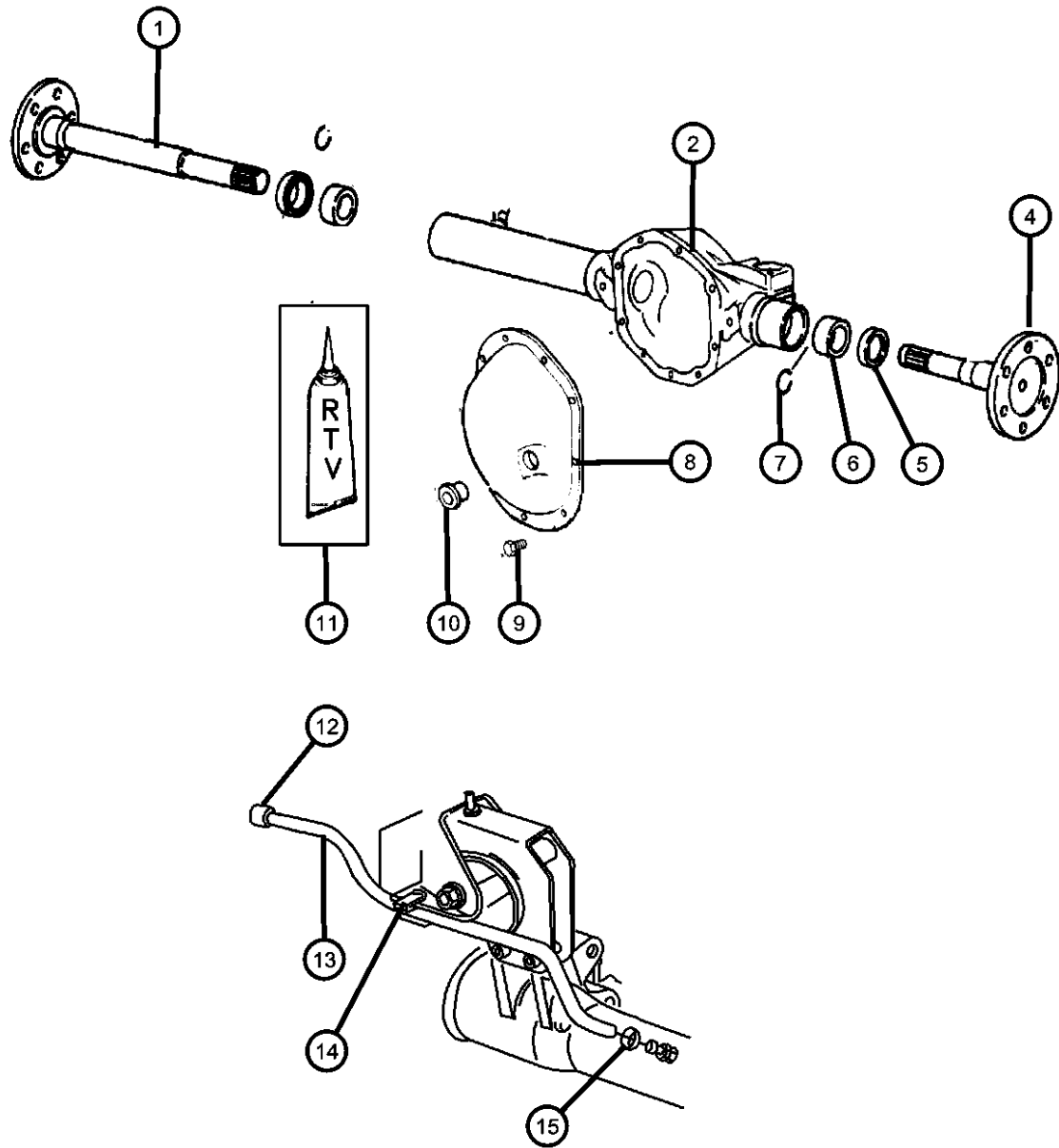
SERIES	LINE	BODY	ENGINE	TRANSMISSION
H = HIGHLINE	1 = Lt. Duty DODGE 2WD	74 = SPORT UTILITY 4-DR	EHC = ENGINE - "MAGNUM" 3.9L SMPI V6	DGK = TRANSMISSION - 4-SPD. AUTOMATIC,42RE
L = LOWLINE	5 = Lt. Duty DODGE 4WD		ELF = ENGINE - 5.2L V8 MPI	DGT = TRANSMISSION - 4-SPD. AUTOMATIC,46RE
M = MEDIUM			EML = ENGINE - 5.9L V8 MPI	DGW = TRANSMISSION - 4-SPD. AUTOMATIC,44RE
P = PREMIUM				
X = SPECIAL				

AR = use ase required - = Non illustrated part

1999 DN

Housing,Front Axle and Vent
Figure 2-310

ITEM	PART NUMBER	QTY	LINE	SERIES	BODY	ENGINE	TRANS	TRIM	DESCRIPTION
1	04882700	1	5						SHAFT, AxleRight
2	04882706	1	5						HOUSING, Axle, with Carrier Caps and Bolts
-3	06035985AA	4	5						BOLT, Differential
4	04882701	1	5						SHAFT, AxleLeft
5	04856336	2	5						SEAL, Axle Drive Shaft
6	J8134586	2	5						BEARING, Axle Shaft
7	04882702	2	5						RETAINER, Axle Shaft
8	04882707	1	5						COVER, Differential
9	05013425AA	1	5						BOLT KIT
10	05252504	1	5						PLUG, Differential Cover
11	05010884AA	1							SEALANT, RTV
12	J5352955	1	5						VENT, AxleUpper
13	04443176	1	5						HOSE, Fuel, .31 I.D. 50 Foot Roll, Vent
14	06032633	2	5						CLIP, Vent Tube
15	00153455	1	5						CLAMP, Hose, .620, Vent Hose

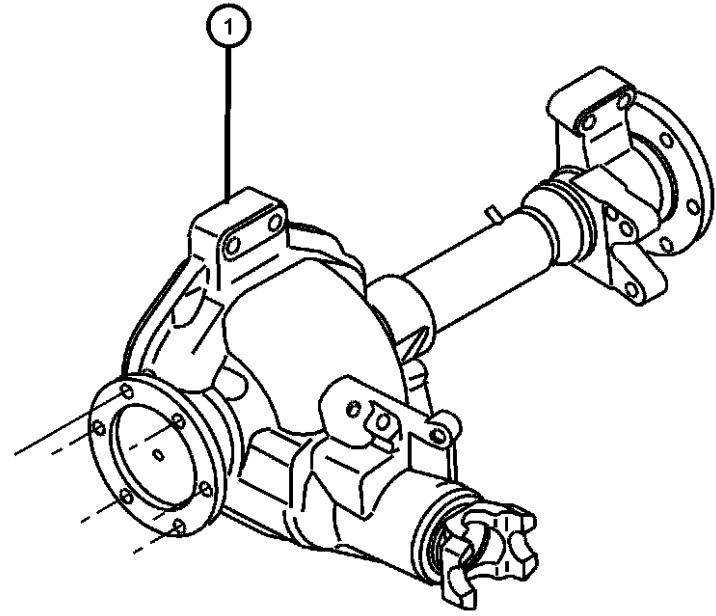


DURANGO (DN)

SERIES	LINE	BODY	ENGINE	TRANSMISSION
H = HIGHLINE	1 = Lt. Duty DODGE 2WD	74 = SPORT UTILITY 4-DR	EHC = ENGINE - "MAGNUM" 3.9L SMPI V6	DGK = TRANSMISSION - 4-SPD. AUTOMATIC,42RE
L = LOWLINE	5 = Lt. Duty DODGE 4WD		ELF = ENGINE - 5.2L V8 MPI	DGT = TRANSMISSION - 4-SPD. AUTOMATIC,46RE
M = MEDIUM			EML = ENGINE - 5.9L V8 MPI	DGW = TRANSMISSION - 4-SPD. AUTOMATIC,44RE
P = PREMIUM				
X = SPECIAL				

AR = use ase required - = Non illustrated part

**Axle Assembly, Front
Figure 2-410**



ITEM	PART NUMBER	QTY	LINE	SERIES	BODY	ENGINE	TRANS	TRIM	DESCRIPTION
------	-------------	-----	------	--------	------	--------	-------	------	-------------

Note: DMD=3.55 Axle Ratio—DMH=3.92 Axle Ratio

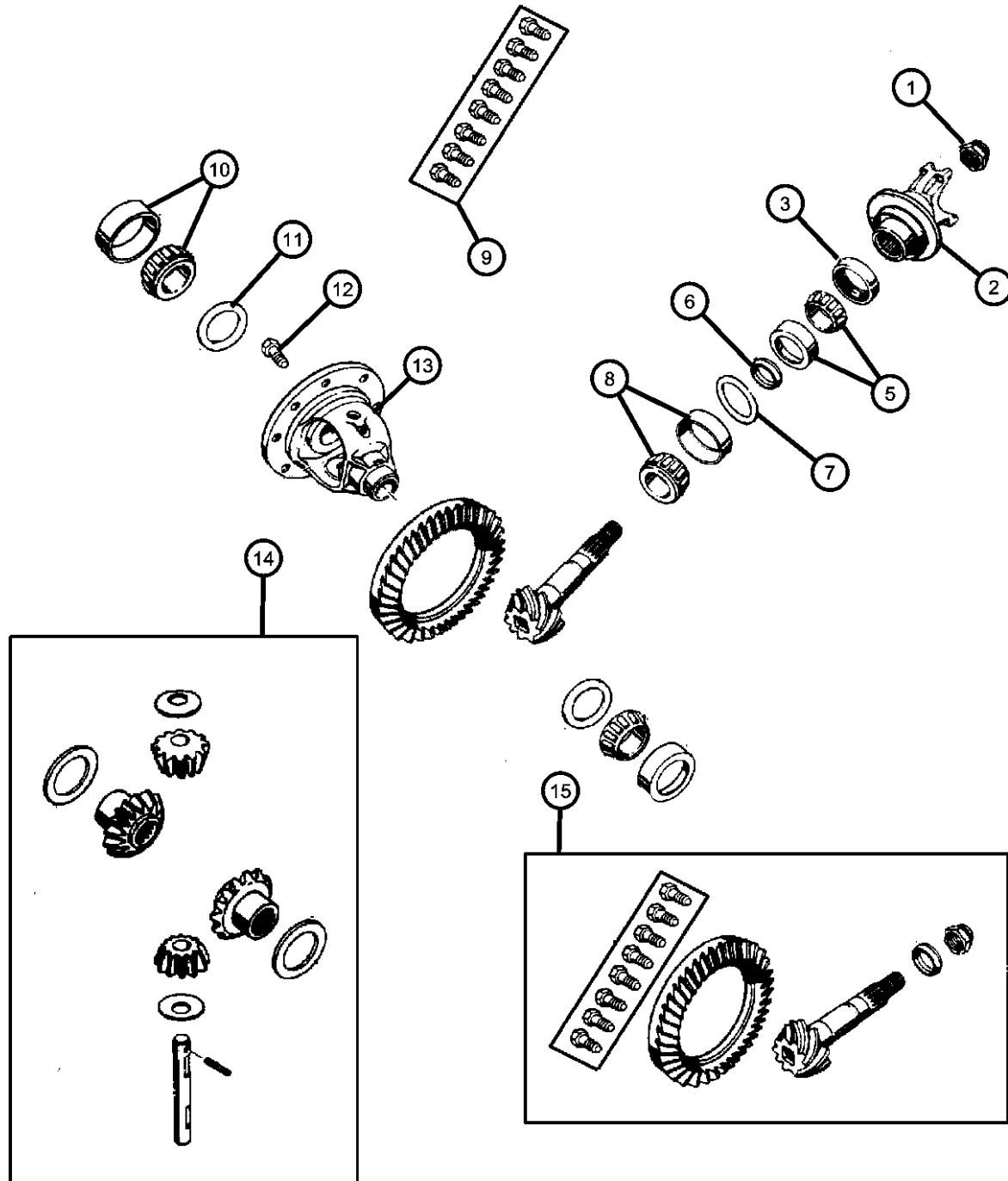
1									AXLE, Front
	52070001	1	5						[DMD]
	04874468								Mopar SAE 80W-90 Gear Lube Quart Bottle
	68003054AA								Mopar SAE 80W-90 Gear Lube 16 Gallon Keg
	52070002	1	5						[DMH]
	04874468								Mopar SAE 80W-90 Gear Lube Quart Bottle
	68003054AA								Mopar SAE 80W-90 Gear Lube 16 Gallon Keg

DURANGO (DN)

SERIES	LINE	BODY	ENGINE	TRANSMISSION
H = HIGHLINE	1 = Lt. Duty DODGE 2WD	74 = SPORT UTILITY 4-DR	EHC = ENGINE - "MAGNUM" 3.9L SMPI V6	DGK = TRANSMISSION - 4-SPD. AUTOMATIC,42RE
L = LOWLINE	5 = Lt. Duty DODGE 4WD		ELF = ENGINE - 5.2L V8 MPI	DGT = TRANSMISSION - 4-SPD. AUTOMATIC,46RE
M = MEDIUM			EML = ENGINE - 5.9L V8 MPI	DGW = TRANSMISSION - 4-SPD. AUTOMATIC,44RE
P = PREMIUM				
X = SPECIAL				

AR = use ase required - = Non illustrated part

Differential,Front Axle
Figure 2-610



ITEM	PART NUMBER	QTY	LINE	SERIES	BODY	ENGINE	TRANS	TRIM	DESCRIPTION
Note: DMD=3.55 Ratio—DMH=3.92 Ratio									
1	04720895	1	5						NUT, Pinion Yoke
2	04883962AA	1	5						YOKE, Axle
3	04883966AA	1	5						SEAL, Drive Pinion
4	04883964AA	1	5						O RING, Pinion Flange, Fits Over Hub of Pinion Flange
5	05252508	1	5						BEARING, Drive Pinion, Bearing and Cup, Front
6	J3175779	1	5						SPACER, Drive Pinion Bearing, Crush
7	04882697	1	5						SHIM KIT, Pinion Shaft
8	05252507	1	5						BEARING, Drive Pinion, Bearing and Cup, Rear
9	04720891	1	5						BOLT KIT, Consists of 10-5252503 Screws
10	J8126500	1	5						BEARING, Differential, Consists of 2 Bearings and 2 Cups
11	04720863	1	5						SHIM KIT, Differential, Carrier Bearing
12	05252503	10	5						SCREW, Drive Gear, Ring Gear Mounting
13	04882710	1	5						CASE, Differential
14	04882696	1	5						GEAR KIT, Center Differential
15									GEAR KIT, Ring And Pinion
	04761676	1	5						[DMD]
	04882716	1	5						[DMH]

DURANGO (DN)

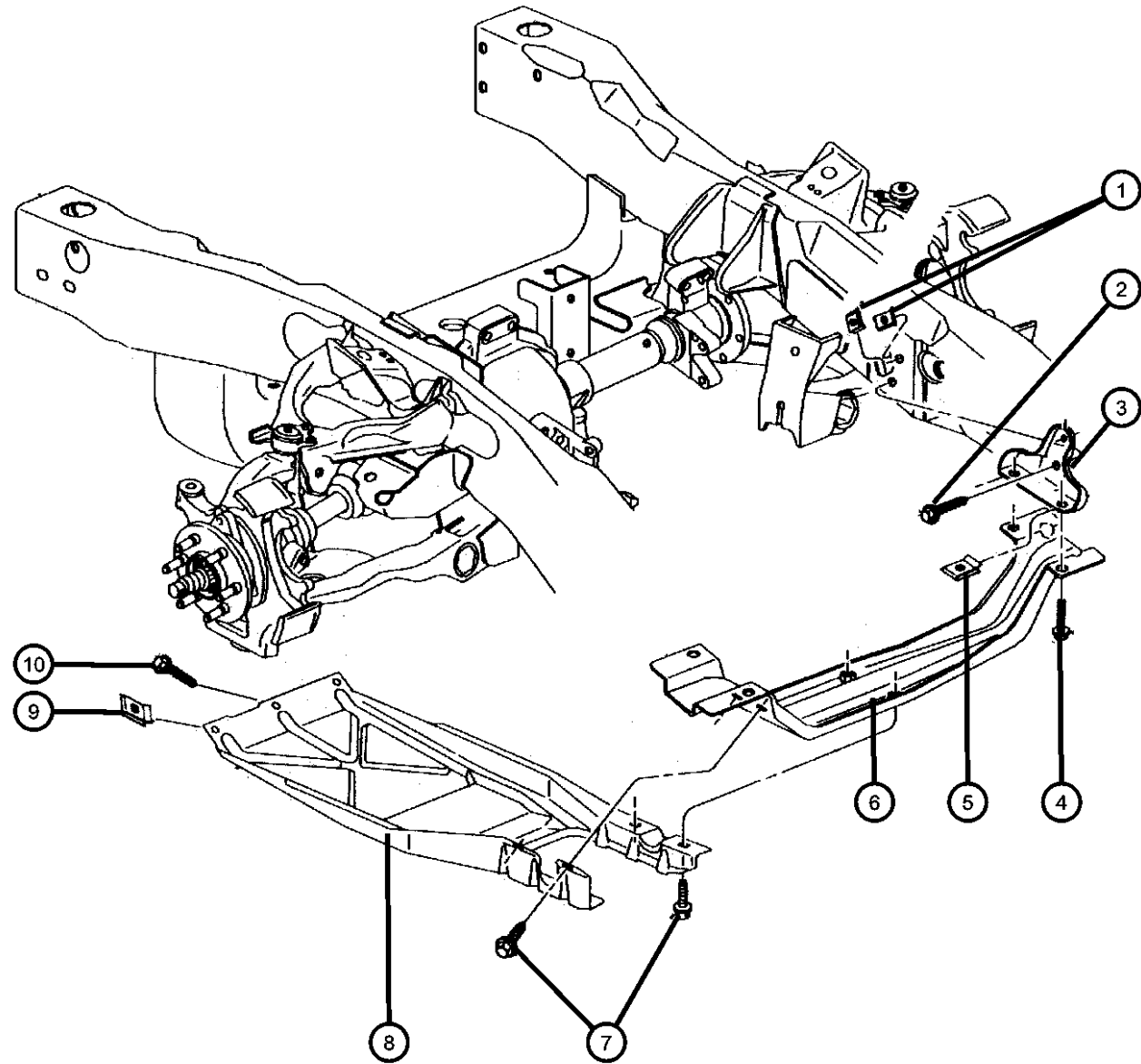
SERIES LINE
H = HIGHLINE 1 = Lt. Duty DODGE 2WD
L = LOWLINE 5 = Lt. Duty DODGE 4WD
M = MEDIUM
P = PREMIUM
X = SPECIAL

BODY
74 = SPORT UTILITY 4-DR

ENGINE TRANSMISSION
EHC = ENGINE - "MAGNUM" 3.9L SMPI V6 DGK = TRANSMISSION - 4-SPD. AUTOMATIC,42RE
ELF = ENGINE - 5.2L V8 MPI DGT = TRANSMISSION - 4-SPD. AUTOMATIC,46RE
EML = ENGINE - 5.9L V8 MPI DGW = TRANSMISSION - 4-SPD. AUTOMATIC,44RE

AR = use ase required - = Non illustrated part

Skid Plate, Front Axle
Figure 2-810



ITEM	PART NUMBER	QTY	LINE	SERIES	BODY	ENGINE	TRANS	TRIM	DESCRIPTION
1	06101340	4	5						U-NUT, M10-1.50, Bracket to Frame
2	06101340	4							SCREW AND WASHER, Hex Head, M10x1.5x40, (NOT SERVICED)
3	52019850	2	5						BRACKET, Skid Plate
4	52019850	2							SCREW AND WASHER, Hex Head, M10x1.5x40, (NOT SERVICED)
5	06101340	4	5						U-NUT, M10-1.50, Crossmember to Bracket
6	52058897	1	5						CROSSMEMBER, Front Axle
7	52058897	1							SCREW AND WASHER, Hex Head, M10x1.5x30, (NOT SERVICED)
8	52019981	1	5						SKID PLATE, Front, Axle
9	06101340	3	5						U-NUT, M10-1.50, Skid Plate to Frame
10	06101340	3							SCREW AND WASHER, Hex Head, M10x1.5x40, (NOT SERVICED)

DURANGO (DN)

SERIES	LINE	BODY	ENGINE	TRANSMISSION
H = HIGHLINE	1 = Lt. Duty DODGE 2WD	74 = SPORT UTILITY 4-DR	EHC = ENGINE - "MAGNUM" 3.9L SMPI V6	DGK = TRANSMISSION - 4-SPD. AUTOMATIC,42RE
L = LOWLINE	5 = Lt. Duty DODGE 4WD		ELF = ENGINE - 5.2L V8 MPI	DGT = TRANSMISSION - 4-SPD. AUTOMATIC,46RE
M = MEDIUM			EML = ENGINE - 5.9L V8 MPI	DGW = TRANSMISSION - 4-SPD. AUTOMATIC,44RE
P = PREMIUM				
X = SPECIAL				

AR = use ase required - = Non illustrated part

1999 DN

Group - 3

Rear Axle

Group - 3 Rear Axle

Group-Fig. No.

Illustration Title

Rear Axle

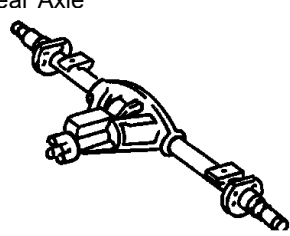
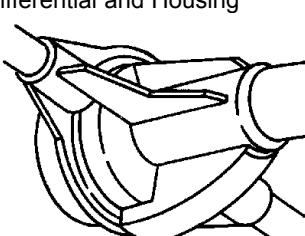
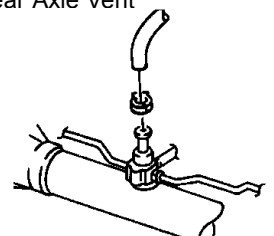
Axle Assembly,Rear,Chrysler Model 9.25 Fig. 3 - 110

Differential and Housing

Axle,Rear,with Differential Parts,Chrysler Model 9.25..... Fig. 3 - 210

Rear Axle Vent

Vent, Axle Fig. 3 - 310

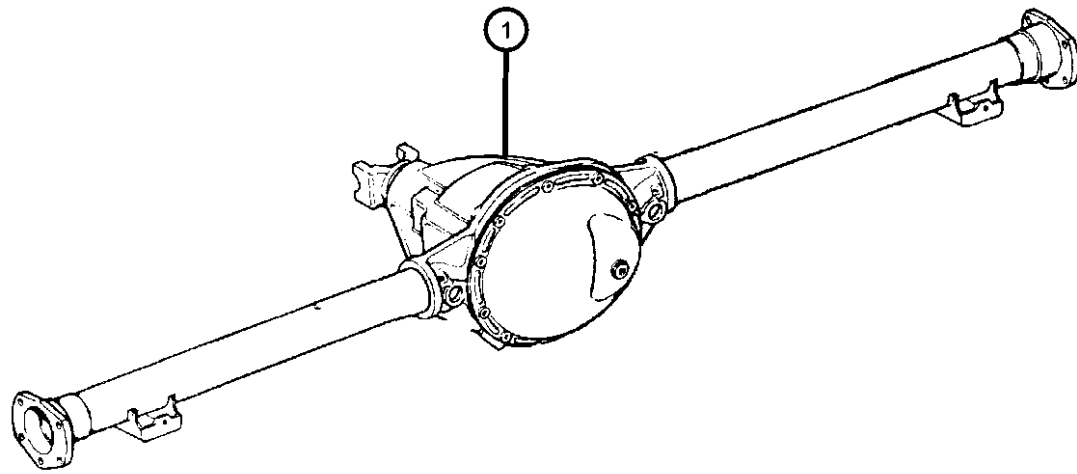
<p>003-100 Rear Axle</p> 	<p>003-200 Differential and Housing</p> 	<p>003-300 Rear Axle Vent</p> 	
----------------------------------------------------------------------------------------------------------------------	--------------------------------------------------------------------------------------------------------------------------------------	-----------------------------------------------------------------------------------------------------------------------------	--

**Axle Assembly,Rear,Chrysler Model 9.25
Figure 3-110**

ITEM	PART NUMBER	QTY	LINE	SERIES	BODY	ENGINE	TRANS	TRIM	DESCRIPTION
------	-------------	-----	------	--------	------	--------	-------	------	-------------

Note: DRB = 9.25 Corporate Axle—DMD = 3.55 Axle Ratio—DMH = 3.92 Axle Ratio—DSA = Trac-Lok

1									AXLE, Service Rear
	05003756AA	1							[DMD,-DSA]
	05003757AA	1							[DMD,+DSA]
	05003758AA	1							[DMH,-DSA]
	05003760AA	1							[DMH,+DSA]



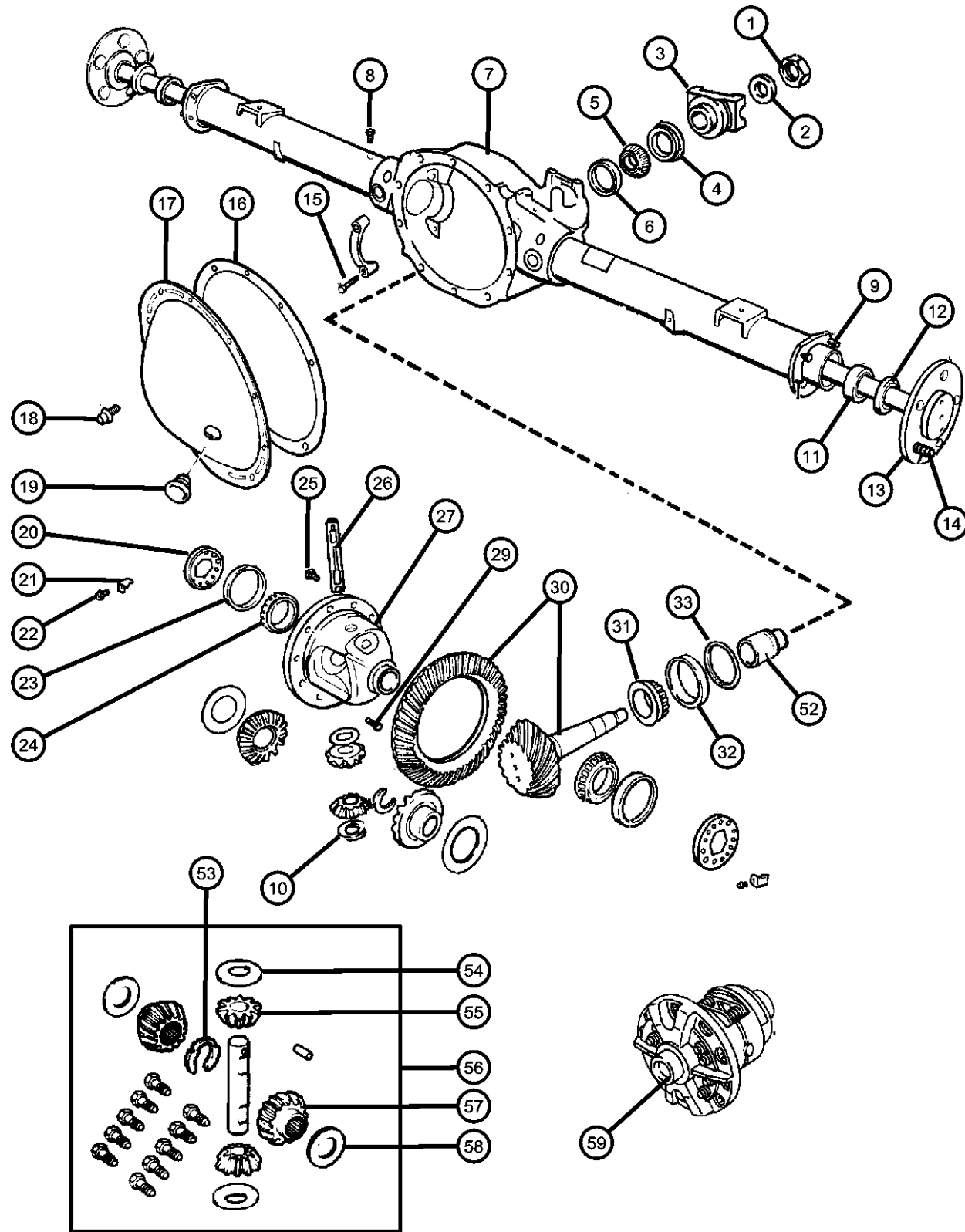
DURANGO (DN)

SERIES	LINE	BODY	ENGINE	TRANSMISSION
H = HIGHLINE	1 = Lt. Duty DODGE 2WD	74 = SPORT UTILITY 4-DR	EHC = ENGINE - "MAGNUM" 3.9L SMPI V6	DGK = TRANSMISSION - 4-SPD. AUTOMATIC,42RE
L = LOWLINE	5 = Lt. Duty DODGE 4WD		ELF = ENGINE - 5.2L V8 MPI	DGT = TRANSMISSION - 4-SPD. AUTOMATIC,46RE
M = MEDIUM			EML = ENGINE - 5.9L V8 MPI	DGW = TRANSMISSION - 4-SPD. AUTOMATIC,44RE
P = PREMIUM				
X = SPECIAL				

AR = use ase required - = Non illustrated part

1999 DN

Axle,Rear,with Differential Parts,Chrysler Model 9.25
Figure 3-210



ITEM	PART NUMBER	QTY	LINE	SERIES	BODY	ENGINE	TRANS	TRIM	DESCRIPTION
Note:DRB =9.25 Chrysler Axle—DMC= 3.21 Ratio—DMD=3.55 Ratio—DMH=3.92 Ratio—DSA= Anti-Spin Differential									
1	06028041	1							NUT, Pinion Yoke
2	02070117	1							WASHER, Pinion Yoke
3	03432487AB	1							YOKE, Axle
4	52067596	1							SEAL, Drive Pinion
5	01820552	1							BEARING, Drive PinionFront
6	01820551	1							CUP, Pinion BearingFront
7	05003755AA	1							HOUSING, Axle
8	52069896AA	1							VENT, Axle
9	03723668	8							STUD, Axle Housing to Backing Plate
10	00152345	8							NUT, Hex Flange Lock, Axle Housing to Backing Plate
11	03507898AB	2							BEARING, Wheel
12	04137426	2							SEAL, Axle Drive Shaft
13									SHAFT, Axle
	52069388	1							Right
	52069389	1							Left
14	06036123AA	12							STUD, Wheel
15	03432695	4							SCREW, Hex Head, .50-13x2.38, Carrier Bearing Cap
16	05010884AA	1							SEALANT, RTV
17	04384293AC	1							COVER, Differential
18	06033043	12							SCREW AND WASHER, Hex Flange Head, .312-18x.562, Differential, Cover
19	03723687	1							PLUG, Differential Cover
20	03507723	2							ADJUSTER, Differential Bearing
21	03723858	2							LOCK, Differential Bearing
22	06023092	2							SCREW AND WASHER, Hex Head, .25-20x.50, Differential Bearing
23	03723148	2							CUP, Differential Side
24	03723149	2							BEARING, Differential
25	06036054AA	12							SCREW, Hex Flange Head, .437-20x.88, Ring Gear Attaching Shaft, Differential, [-DSA]
26	01633928	1							SHAFT, Differential, [-DSA]
27	04384222	1							CASE, Differential, [-DSA]

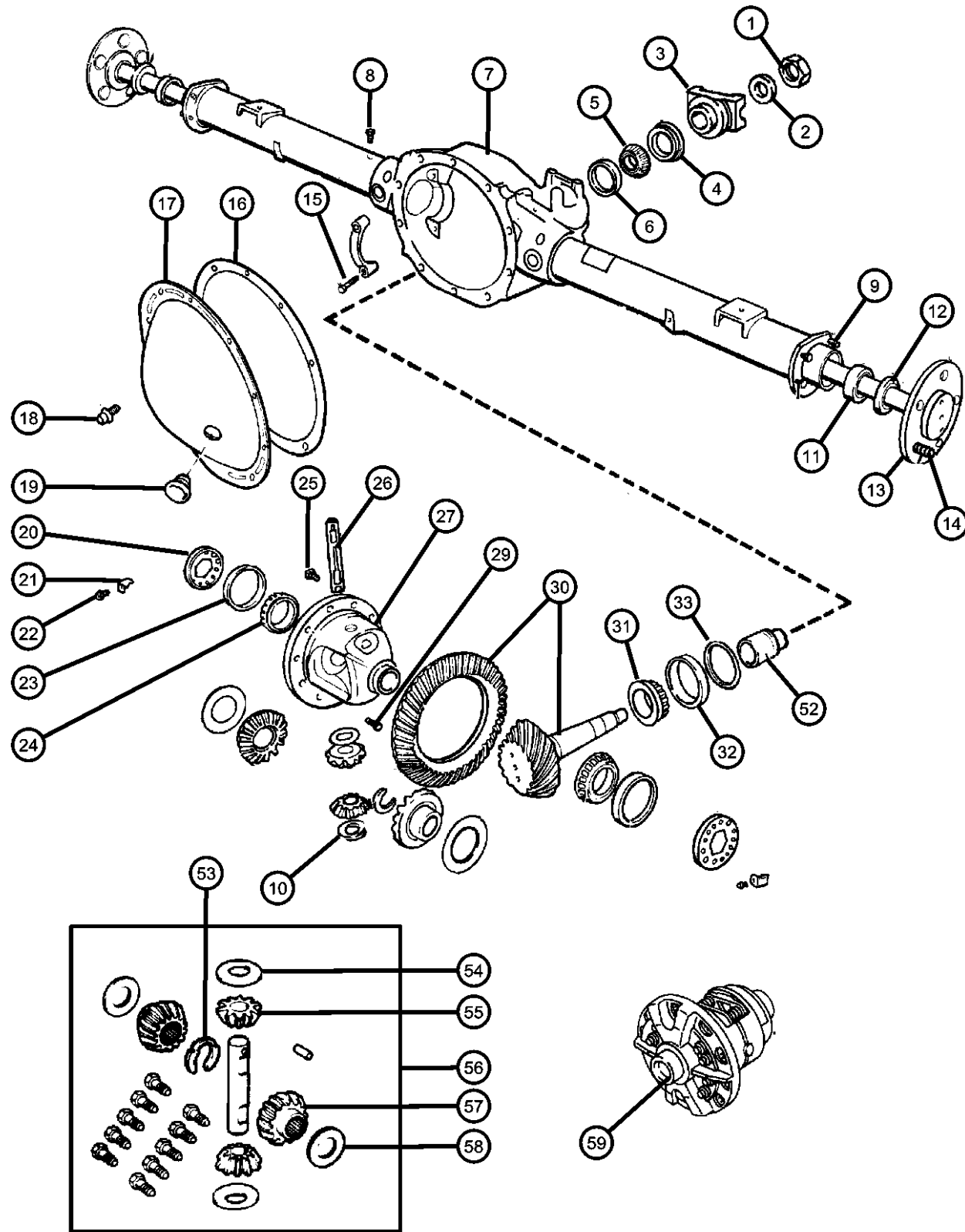
DURANGO (DN)

SERIES	LINE	BODY	ENGINE	TRANSMISSION
H = HIGHLINE	1 = Lt. Duty DODGE 2WD	74 = SPORT UTILITY 4-DR	EHC = ENGINE - "MAGNUM" 3.9L SMPI V6	DGK = TRANSMISSION - 4-SPD. AUTOMATIC,42RE
L = LOWLINE	5 = Lt. Duty DODGE 4WD		ELF = ENGINE - 5.2L V8 MPI	DGT = TRANSMISSION - 4-SPD. AUTOMATIC,46RE
M = MEDIUM			EML = ENGINE - 5.9L V8 MPI	DGW = TRANSMISSION - 4-SPD. AUTOMATIC,44RE
P = PREMIUM				
X = SPECIAL				

AR = use ase required - = Non illustrated part

1999 DN

Axle,Rear,with Differential Parts,Chrysler Model 9.25
Figure 3-210



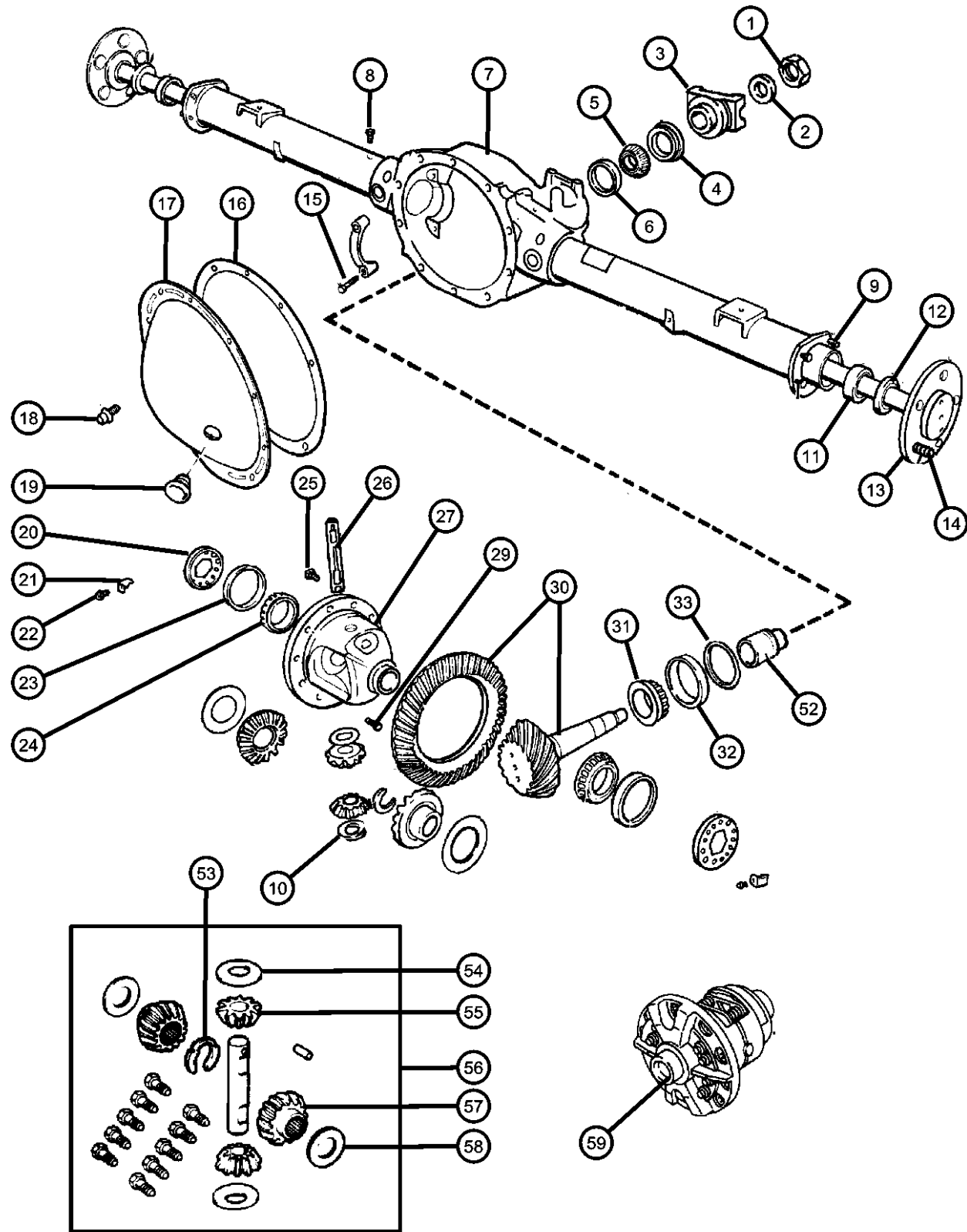
ITEM	PART NUMBER	QTY	LINE	SERIES	BODY	ENGINE	TRANS	TRIM	DESCRIPTION
-28	04384227	1							TONE RING, Sensor
29	03507724	2							SCREW, Hex Head, .312-18x1.80, Differential Shaft Lock
30									GEAR KIT, Ring And Pinion
	05010321AA	1							[DMH]
	05010322AA	1							[DMD]
31	02852731	1							BEARING, Drive PinionRear
32	02852732	1							CUP, Pinion BearingRear
33	03432320	AR							SHIM, Drive Pinion Bearing, .020
-34	03432321	AR							SHIM, Drive Pinion Bearing, .021
-35	03432322	AR							SHIM, Drive Pinion Bearing, .022
-36	03432323	AR							SHIM, Drive Pinion Bearing, .023
-37	03432324	AR							SHIM, Drive Pinion Bearing, .024
-38	03432325	AR							SHIM, Drive Pinion Bearing, .025
-39	03432326	AR							SHIM, Drive Pinion Bearing, .026
-40	03432327	AR							SHIM, Drive Pinion Bearing, .027
-41	03432328	AR							SHIM, Drive Pinion Bearing, .028
-42	03432329	AR							SHIM, Drive Pinion Bearing, .029
-43	03432330	AR							SHIM, Drive Pinion Bearing, .030
-44	03432331	AR							SHIM, Drive Pinion Bearing, .031
-45	03432332	AR							SHIM, Drive Pinion Bearing, .032
-46	03432333	AR							SHIM, Drive Pinion Bearing, .033
-47	03432334	AR							SHIM, Drive Pinion Bearing, .034
-48	03432335	AR							SHIM, Drive Pinion Bearing, .035
-49	03432336	AR							SHIM, Drive Pinion Bearing, .036
-50	03432337	AR							SHIM, Drive Pinion Bearing, .037
-51	03432338	AR							SHIM, Drive Pinion Bearing, .038
52	03507678	1							SPACER, Drive Pinion Bearing, Crush
53	04137669	2							LOCK, Drive Shaft
54	03507641	2							WASHER, Pinion Thrust, [-DSA]
55	03507641	2							PINION, Differential, Serviced in Differential GEAR PACKAGE, (NOT SERVICED)
56	04798912	1							GEAR PACKAGE, Differential, [-DSA]

DURANGO (DN)

SERIES	LINE	BODY	ENGINE	TRANSMISSION
H = HIGHLINE	1 = Lt. Duty DODGE 2WD	74 = SPORT UTILITY 4-DR	EHC = ENGINE - "MAGNUM" 3.9L SMPI V6	DGK = TRANSMISSION - 4-SPD. AUTOMATIC,42RE
L = LOWLINE	5 = Lt. Duty DODGE 4WD		ELF = ENGINE - 5.2L V8 MPI	DGT = TRANSMISSION - 4-SPD. AUTOMATIC,46RE
M = MEDIUM			EML = ENGINE - 5.9L V8 MPI	DGW = TRANSMISSION - 4-SPD. AUTOMATIC,44RE
P = PREMIUM				
X = SPECIAL				

AR = use ase required - = Non illustrated part

Axle,Rear,with Differential Parts,Chrysler Model 9.25
Figure 3-210



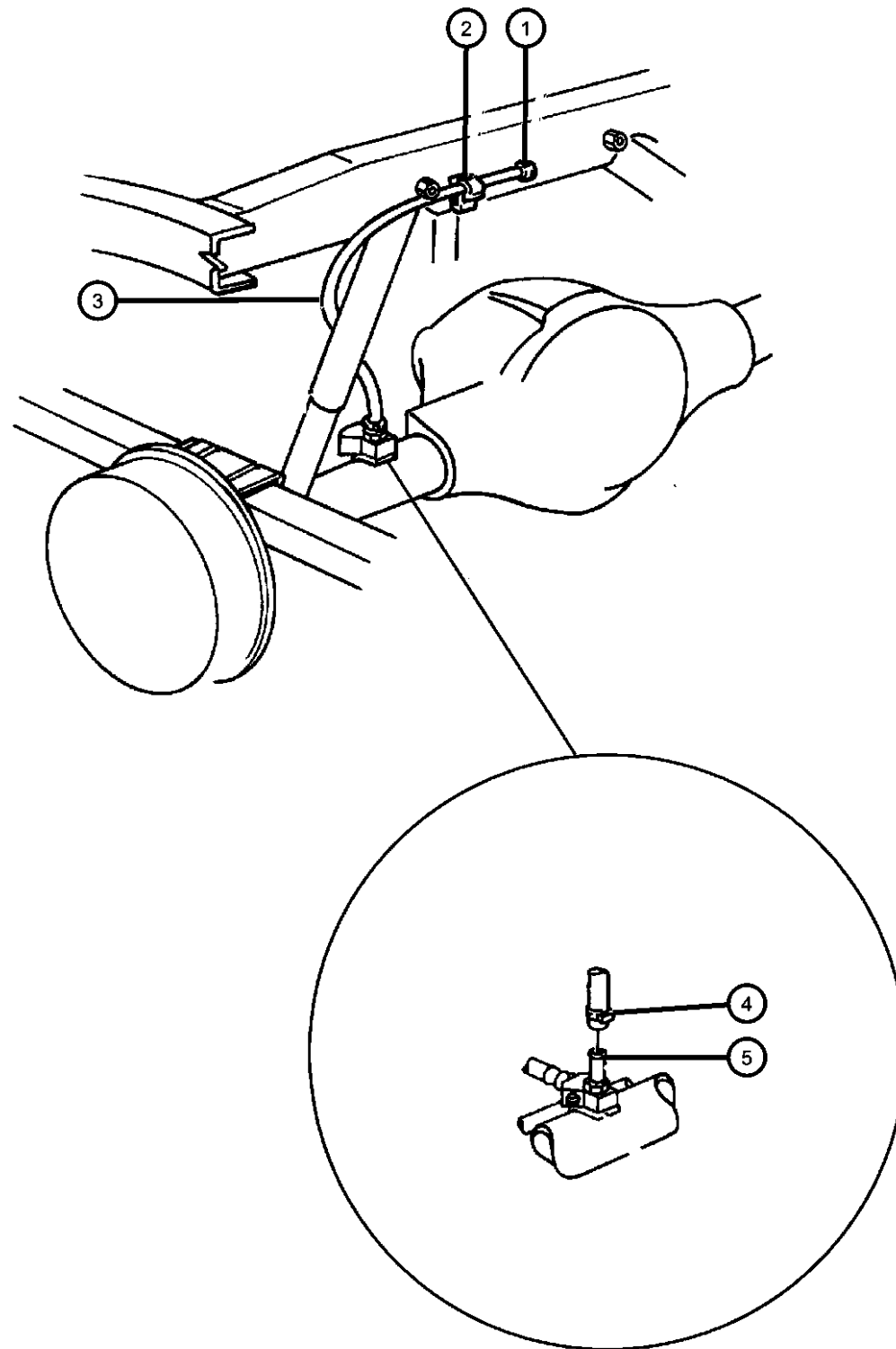
ITEM	PART NUMBER	QTY	LINE	SERIES	BODY	ENGINE	TRANS	TRIM	DESCRIPTION
57	04798912	1							GEAR, Differential, Serviced in Differential GEAR PACKAGE, (NOT SERVICED)
58	04131294	1							WASHER PACKAGE, Side Gear Thrust, [-DSA]
59	52068450	1							CASE, Differential, [+DSA]

DURANGO (DN)

SERIES	LINE	BODY	ENGINE	TRANSMISSION
H = HIGHLINE	1 = Lt. Duty DODGE 2WD	74 = SPORT UTILITY 4-DR	EHC = ENGINE - "MAGNUM" 3.9L SMPI V6	DGK = TRANSMISSION - 4-SPD. AUTOMATIC,42RE
L = LOWLINE	5 = Lt. Duty DODGE 4WD		ELF = ENGINE - 5.2L V8 MPI	DGT = TRANSMISSION - 4-SPD. AUTOMATIC,46RE
M = MEDIUM			EML = ENGINE - 5.9L V8 MPI	DGW = TRANSMISSION - 4-SPD. AUTOMATIC,44RE
P = PREMIUM				
X = SPECIAL				

AR = use ase required - = Non illustrated part

Vent, Axle
Figure 3-310



ITEM	PART NUMBER	QTY	LINE	SERIES	BODY	ENGINE	TRANS	TRIM	DESCRIPTION
1	52067516	1							CAP, Rear Axle Vent, Vent
2	34175327	1							CLIP, Conduit Convoluted
3	52067972	1							HOSE, Axle Vent
4	00153455	1	5						CLAMP, Hose, .620
5	52069896AA	1							VENT, Axle

DURANGO (DN)

SERIES	LINE	BODY	ENGINE	TRANSMISSION
H = HIGHLINE	1 = Lt. Duty DODGE 2WD	74 = SPORT UTILITY 4-DR	EHC = ENGINE - "MAGNUM" 3.9L SMPI V6	DGK = TRANSMISSION - 4-SPD. AUTOMATIC,42RE
L = LOWLINE	5 = Lt. Duty DODGE 4WD		ELF = ENGINE - 5.2L V8 MPI	DGT = TRANSMISSION - 4-SPD. AUTOMATIC,46RE
M = MEDIUM			EML = ENGINE - 5.9L V8 MPI	DGW = TRANSMISSION - 4-SPD. AUTOMATIC,44RE
P = PREMIUM				
X = SPECIAL				

AR = use ase required - = Non illustrated part

Group - 4

Parking Brake

Group - 4 Parking Brake

Group-Fig. No.

Illustration Title

Parking Brake Lever and Cables

Lever And Cable--parking Brake..... Fig. 4 - 110

004-100
Parking Brake Lever and Cables

