

### VIN PLATE DECODING INFORMATION

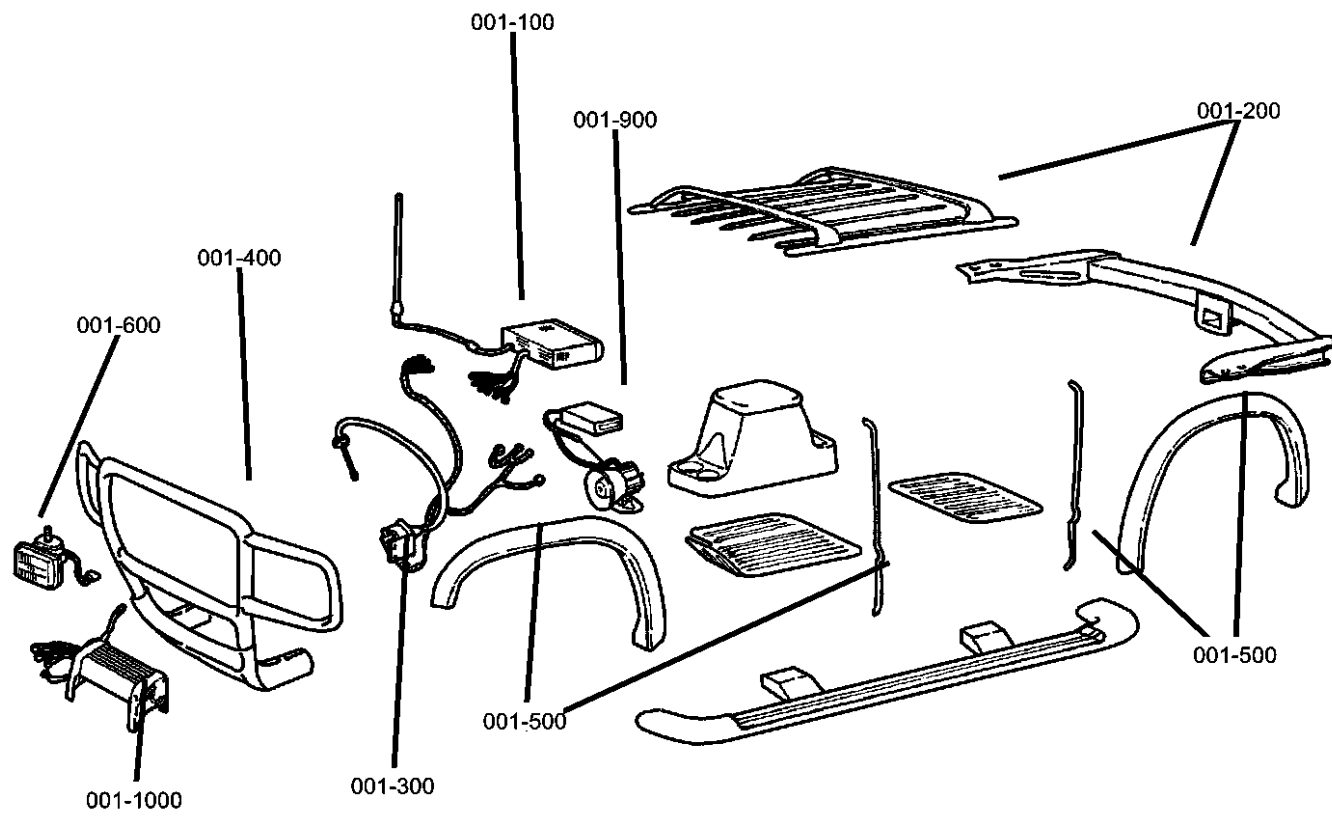
1	2	3	4	5	6	7	8	9	10	11	12 thru 17
<b>Country</b>	<b>Make</b>	<b>Vehicle Type</b>	<b>Other</b>	<b>Line</b>	<b>Series</b>	<b>Body Style</b>	<b>Engine</b>	<b>Check Digit</b>	<b>Model Year</b>	<b>Assy. Plant</b>	<b>Sequence No.</b>

The following table interprets the VIN Plate position shown above.

Position	Interpretation	Codes = Description
1	Country of Origin	1 = USA
2	Assembler	D = Dodge
3	Vehicle Type	7 = Truck
4	GVWR & Pass. Safety	D = 0 - 1360 kg (1 - 3000 lbs) E = 1361 - 1814 kg (3001 - 4000 lbs) F = 1815 - 2267 kg (4001 - 5000 lbs) G = 2268 - 2721 kg (5001 - 6000 lbs) H = 2722 - 3175 kg (6001 - 7000 lbs) J = 3176 - 3628 kg (7001 - 8000 lbs) K = 3629 - 4082 kg (8001 - 9000 lbs) L = 4083 - 4535 kg (9001 - 10000 lbs) M = 4536 - 6350 kg (10001 - 14000 lbs)
5	Vehicle Line	E = Dakota 4x2 W = Dakota 4x4
6	Series	2 = Dakota ST 4 = Dakota SLT / SPORT 5 = Dakota Laramie / Sport
7	Body Style	2 = Club Cab (33) 8 = Quad Cab (84)
8	Engine	J = 4.7 V6 HO (EVC) K = 3.7 V6 MPI (EKG) N = 4.7 V8 MPI (EVA)
9	Check Digit	0 = Check Digit 0 = Check Digit
10	Model Year	5 = 2005
11	Assembly Plant	S = Warren Truck
12 thru 17	Vehicle Build Sequence	Model Year Assembly Sequence

# Group - 1

## Component Parts for Mopar Accessories



## Group - 1 Component Parts for Mopar Accessories

Group-Fig. No.

Illustration Title

### Audio & Electronics



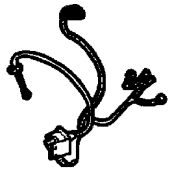
Satellite Receiver Kit.....	Fig. 1 - 120
Install Kit, Satellite Receiver.....	Fig. 1 - 125

### Carriers & Cargo Hauling

Cover Kit - Tonneau.....	Fig. 1 - 265
Cover Kit - Folding.....	Fig. 1 - 270
Cover Kit - Tonneau Hard, One Piece.....	Fig. 1 - 275
Box Kit / Storage Box Exterior.....	Fig. 1 - 280

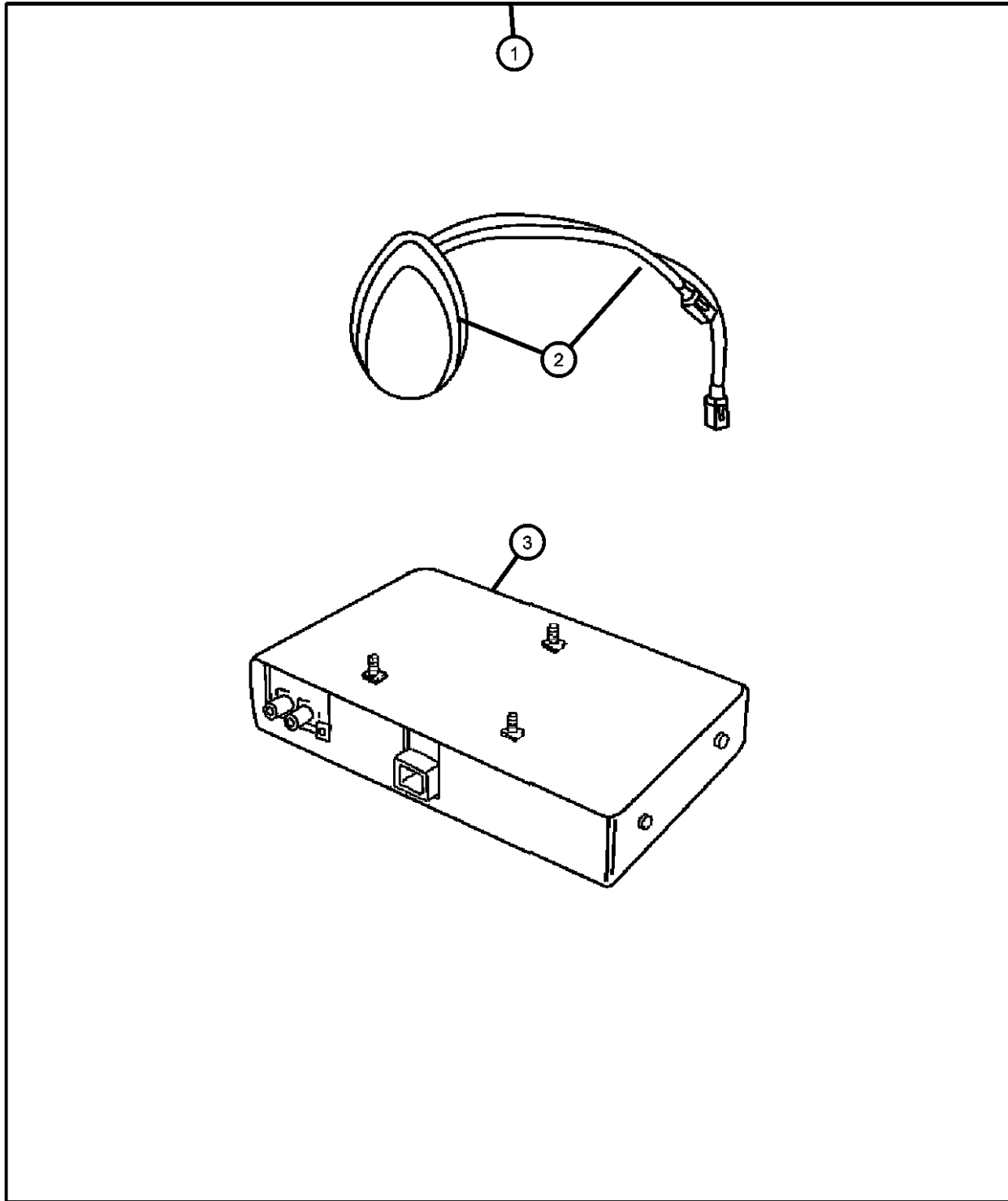
### Driving Convenience

Remote Start - Installation Kit.....	Fig. 1 - 310
Hands Free /Cellular Phone Blue Tooth.....	Fig. 1 - 320

<p><b>001-100</b> Audio &amp; Electronics</p> 	<p><b>001-200</b> Carriers &amp; Cargo Hauling</p> 	<p><b>001-300</b> Driving Convenience</p> 	
---	--	--	--

**Satellite Receiver Kit  
Figure 1-120**

ITEM	PART NUMBER	QTY	LINE	SERIES	BODY	ENGINE	TRANS	TRIM	DESCRIPTION
------	-------------	-----	------	--------	------	--------	-------	------	-------------



Note; For Warranty Repair On Item 3, Order Using Z Prefix

1	82208881AA	1							RECEIVER, Satellite
2	05091504AB	1							ANTENNA, Satellite
3	05064002AJ	1							RECEIVER, Satellite

**DAKOTA (ND)**

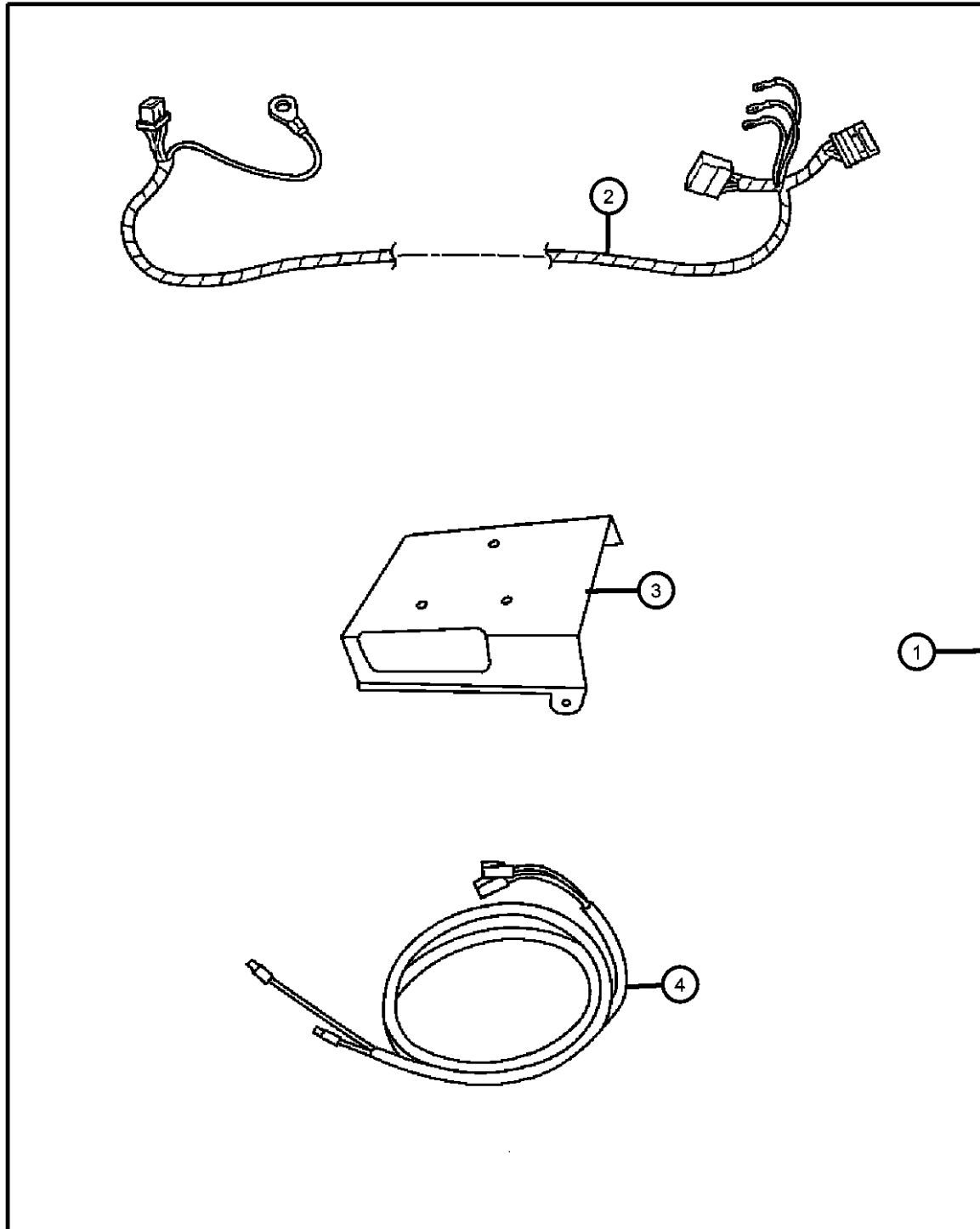
SERIES	LINE	BODY	ENGINE	TRANSMISSION
H = HIGHLINE	1 = Lt. Duty DODGE 2WD	33 = QUAD CAB 4-DR 6.5 FT BOX	EKG = Engine - 3.7L V6	DEJ = Transmission-6-Spd. Man. Getrag 238
L = LOWLINE	5 = Lt. Duty DODGE 4WD	84 = CREW CAB 4-DR W.B.1	EVA = Engine- 4.7L V8 MPI	DG6 = Transmission-4-Spd. Automatic, 42RLE
P = PREMIUM			EVC = Engine - 4.7L HO V8 MPI	DGQ = Transmission-5-Spd Automatic 5-45RFE

AR = use ase required - = Non illustrated part

2005 ND

**Install Kit, Satellite Receiver  
Figure 1-125**

ITEM	PART NUMBER	QTY	LINE	SERIES	BODY	ENGINE	TRANS	TRIM	DESCRIPTION
1	82209040	1							INSTALL KIT, Satelite Receiver
2	05159035AA	1							HARNESS, Overlay
3	56043279AB	1							BRACKET, Satellite Receiver
4	05066207AB	1							CABLE, Antenna



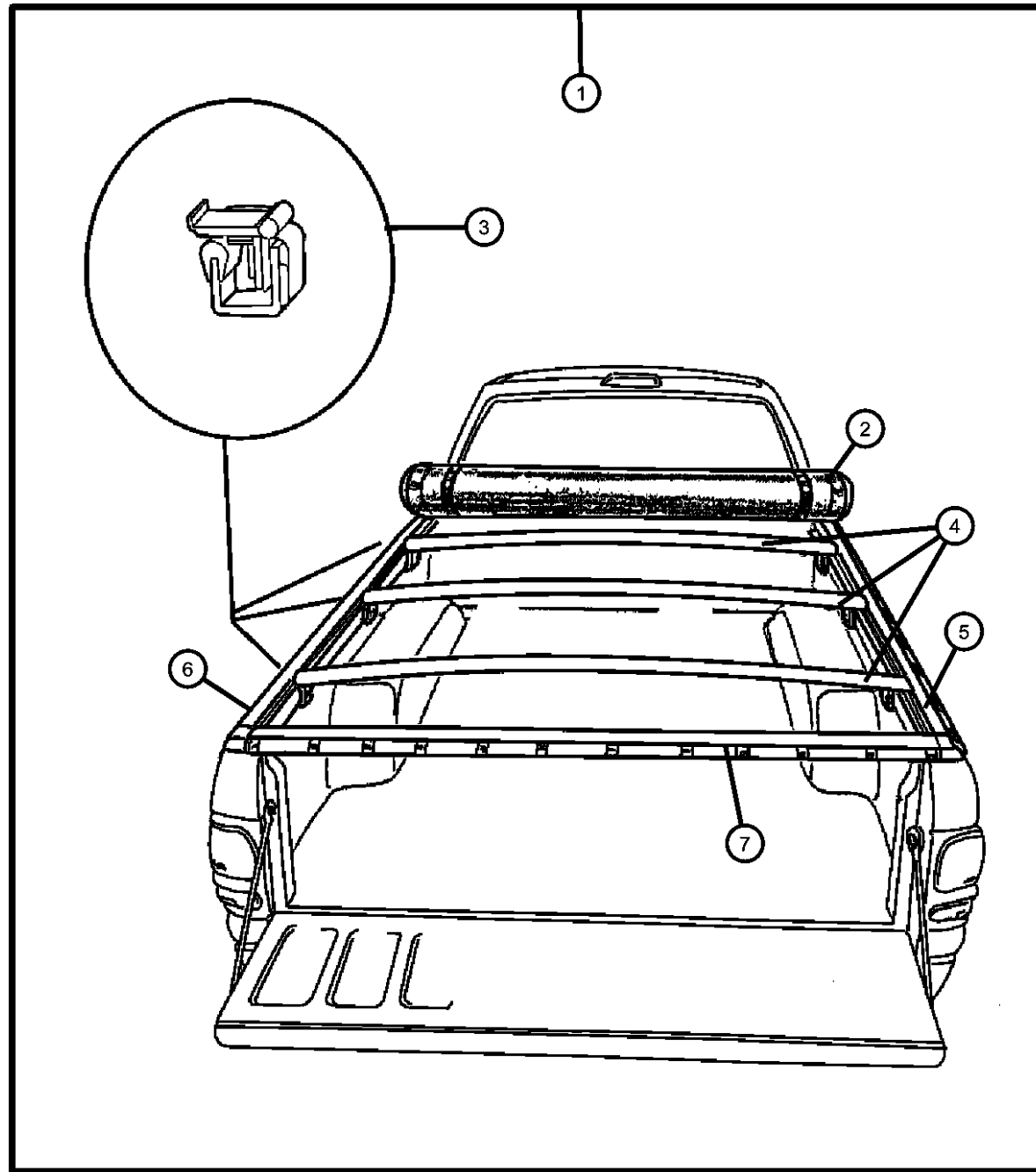
**DAKOTA (ND)**

SERIES	LINE	BODY	ENGINE	TRANSMISSION
H = HIGHLINE	1 = Lt. Duty DODGE 2WD	33 = QUAD CAB 4-DR 6.5 FT BOX	EKG = Engine - 3.7L V6	DEJ = Transmission-6-Spd. Man. Getrag 238
L = LOWLINE	5 = Lt. Duty DODGE 4WD	84 = CREW CAB 4-DR W.B.1	EVA = Engine- 4.7L V8 MPI	DG6 = Transmission-4-Spd. Automatic, 42RLE
P = PREMIUM			EVC = Engine - 4.7L HO V8 MPI	DGQ = Transmission-5-Spd Automatic 5-45RFE

AR = use ase required - = Non illustrated part

2005 ND

**Cover Kit - Tonneau  
Figure 1-265**



ITEM	PART NUMBER	QTY	LINE	SERIES	BODY	ENGINE	TRANS	TRIM	DESCRIPTION
------	-------------	-----	------	--------	------	--------	-------	------	-------------

NOTE; Not for use with OverRail Bedliners.

1									COVER KIT, Tonneau
	82208692	1			84				
	82208694	1			33				
2									COVER ASSY, Tonneau
	05161946AA	1			33				
	05161947AA	1			84				
3									CLAMP, Tonneau
	05161948AA	1			84				Front
		1			33				Front
	05161949AA	1			33				Middle
	05161950AA	1			33				Rear
		1			84				Rear
4									BOW, Tonneau Cover
	05161952AA	1			33				Set of 3
	05161953AA	1			84				Set of 2
5									RAIL, Tonneau Cover
	55364008AA	1			33				Right Side
	55364012AA	1			84				Right Side
6									RAIL, Tonneau Cover
	55364009AA	1			33				Left Side
	55364013AA	1			84				Left Side
7									RAIL, Tonneau Cover
	05161951AA	1			84				Tailgate, Rear
		1			33				Tailgate, Rear

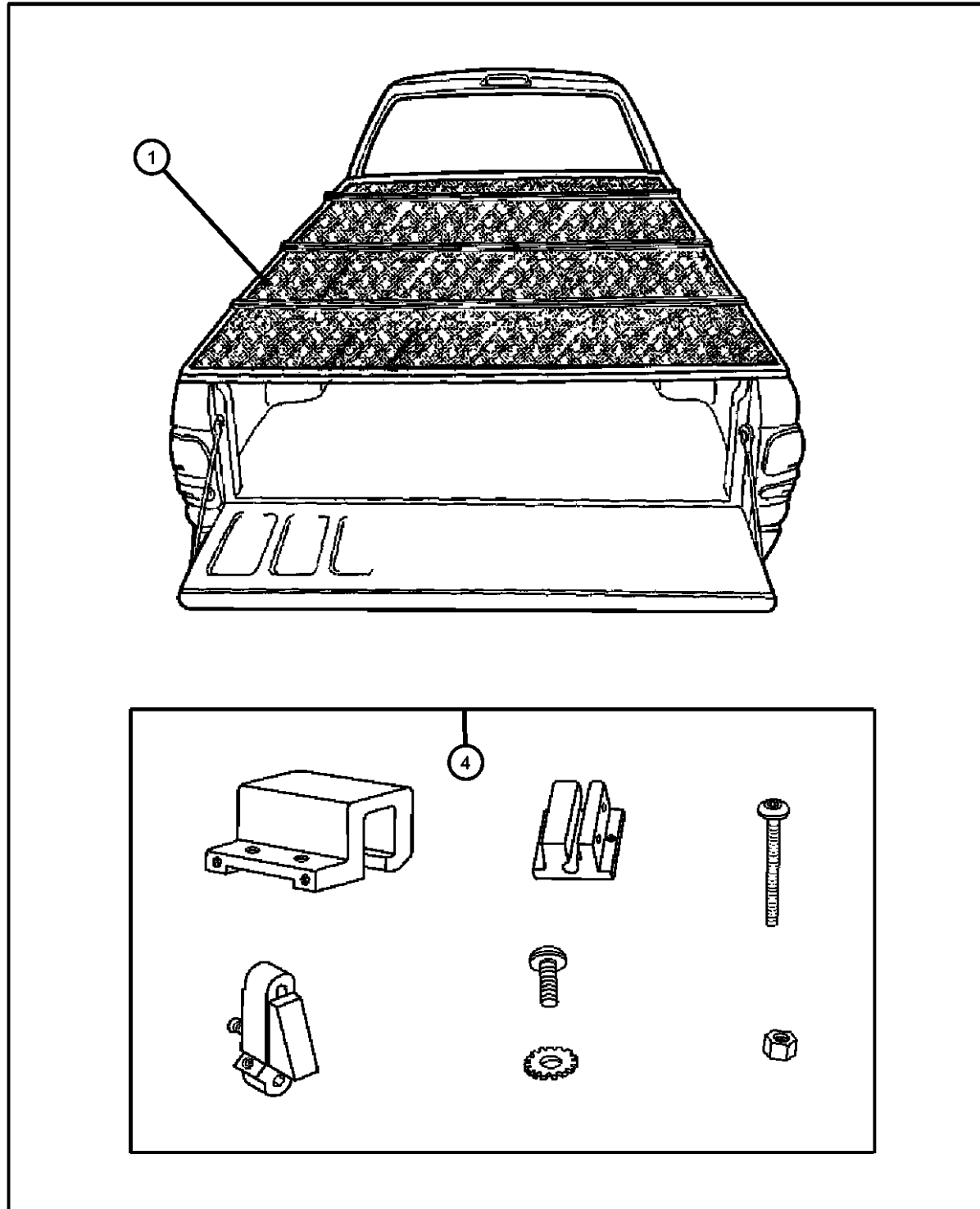
**DAKOTA (ND)**

SERIES	LINE	BODY	ENGINE	TRANSMISSION
H = HIGHLINE	1 = Lt. Duty DODGE 2WD	33 = QUAD CAB 4-DR 6.5 FT BOX	EKG = Engine - 3.7L V6	DEJ = Transmission-6-Spd. Man. Getrag 238
L = LOWLINE	5 = Lt. Duty DODGE 4WD	84 = CREW CAB 4-DR W.B.1	EVA = Engine- 4.7L V8 MPI	DG6 = Transmission-4-Spd. Automatic, 42RLE
P = PREMIUM			EVC = Engine - 4.7L HO V8 MPI	DGQ = Transmission-5-Spd Automatic 5-45RFE

AR = use ase required - = Non illustrated part

2005 ND

**Cover Kit - Folding**  
**Figure 1-270**



ITEM	PART NUMBER	QTY	LINE	SERIES	BODY	ENGINE	TRANS	TRIM	DESCRIPTION
------	-------------	-----	------	--------	------	--------	-------	------	-------------

Note: 82208696 Requires Hardware Kit For Installation, Use Item#4

1									COVER KIT, Tonneau-Folding
	82208695	1			84				
	82208696	1			33				
-2	05018118AA	1			33				LOCK KIT, Folding-tonneau
-3	05018386AA	1			33				KEY, Master
4	82208697	1			33				HARDWARE KIT, Tonneau - Folding

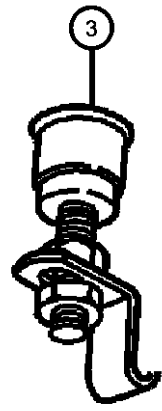
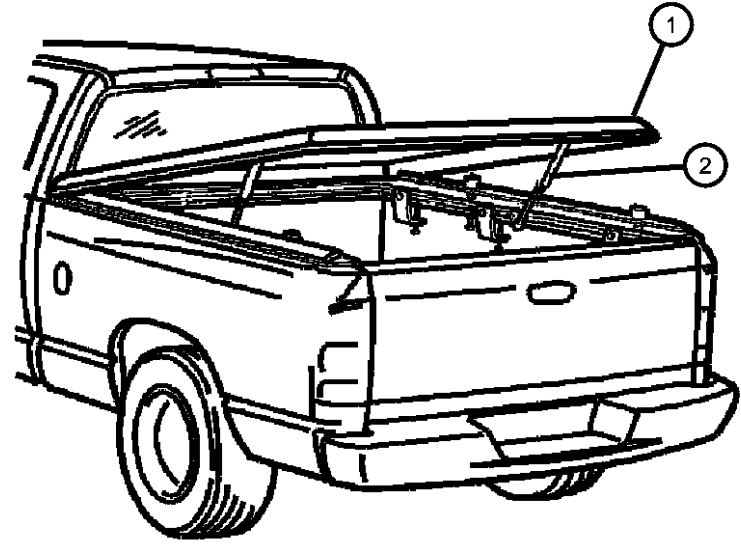
**DAKOTA (ND)**

SERIES	LINE	BODY	ENGINE	TRANSMISSION
H = HIGHLINE	1 = Lt. Duty DODGE 2WD	33 = QUAD CAB 4-DR 6.5 FT	EKG = Engine - 3.7L V6	DEJ = Transmission-6-Spd. Man.
L = LOWLINE	5 = Lt. Duty DODGE 4WD	BOX	EVA = Engine- 4.7L V8 MPI	Getrag 238
P = PREMIUM		84 = CREW CAB 4-DR W.B.1	EVC = Engine - 4.7L HO V8 MPI	DG6 = Transmission-4-Spd. Automatic, 42RLE
				DGQ = Transmission-5-Spd Automatic 5-45RFE

AR = use ase required - = Non illustrated part

2005 ND

**Cover Kit - Tonneau Hard, One Piece**  
**Figure 1-275**



ITEM	PART NUMBER	QTY	LINE	SERIES	BODY	ENGINE	TRANS	TRIM	DESCRIPTION
1									COVER KIT, Tonneau-Hard
	82208698	1			33				Black [PX8]
	82208699	1			84				Black [PX8]
	82209149	1			84				Mineral Gray [PDM]
	82209150	1			84				Bright White [PW7]
	82209151	1			84				Flame Red [PR4]
	82209152	1			84				Patriot Blue [PBT]
	82209153	1			84				Bright Silver Metallic [PSB]
	82209154	1			84				Atlantic Blue [PBJ]
	82209155	1			84				Light Almond [PKJ]
	82209156	1			84				Deep Molten Red [PR8]
	82209157	1			33				Mineral Gray [PDM]
	82209158	1			33				Bright White [PW7]
	82209159	1			33				Flame Red [PR4]
	82209160	1			33				Patriot Blue [PBT]
	82209161	1			33				Bright Silver Metallic [PSB]
	82209162	1			33				Atlantic Blue [PBJ]
	82209163	1			33				Light Almond [PKJ]
	82209164	1			33				Deep Molten Red [PR8]
2									GAS PROP KIT, Tonneau-hard
	05018067AA	1			84				
		1			33				
3									LOCK KIT, Hard-tonneau
	05018117AA	1			33				
		1			84				
4									KEY, Master
	05018343AA	1			84				
		1			33				

**DAKOTA (ND)**

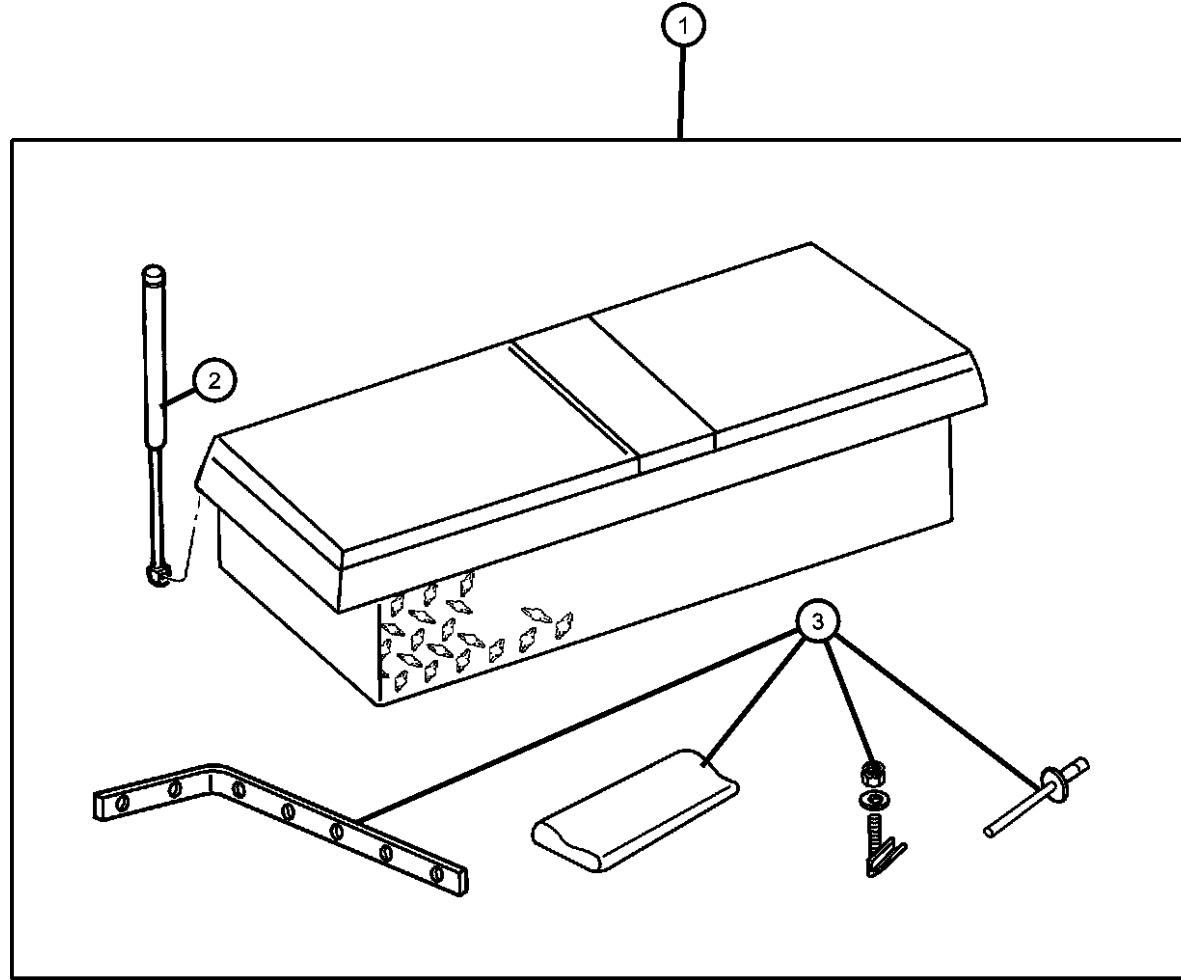
<b>SERIES</b>	<b>LINE</b>	<b>BODY</b>	<b>ENGINE</b>	<b>TRANSMISSION</b>
H = HIGHLINE	1 = Lt. Duty DODGE 2WD	33 = QUAD CAB 4-DR 6.5 FT BOX	EKG = Engine - 3.7L V6	DEJ = Transmission-6-Spd. Man. Getrag 238
L = LOWLINE	5 = Lt. Duty DODGE 4WD	84 = CREW CAB 4-DR W.B.1	EVA = Engine- 4.7L V8 MPI	DG6 = Transmission-4-Spd. Automatic, 42RLE
P = PREMIUM			EVC = Engine - 4.7L HO V8 MPI	DGQ = Transmission-5-Spd Automatic 5-45RFE

AR = use ase required - = Non illustrated part

2005 ND

**Box Kit / Storage Box Exterior**  
**Figure 1-280**

ITEM	PART NUMBER	QTY	LINE	SERIES	BODY	ENGINE	TRANS	TRIM	DESCRIPTION
1	82202791	1							BOX KIT, Storage-Exterior
	82203111	1							Dual Lid
									Single Lid
2	05018533AA	1							STRUT, BOX
3	05018124AA	1							HARDWARE KIT, Storage Exterior



**DAKOTA (ND)**

SERIES	LINE
H = HIGHLINE	1 = Lt. Duty DODGE 2WD
L = LOWLINE	5 = Lt. Duty DODGE 4WD
P = PREMIUM	

BODY	ENGINE
33 = QUAD CAB 4-DR 6.5 FT BOX	EKG = Engine - 3.7L V6
84 = CREW CAB 4-DR W.B.1	EVA = Engine- 4.7L V8 MPI
	EVC = Engine - 4.7L HO V8 MPI

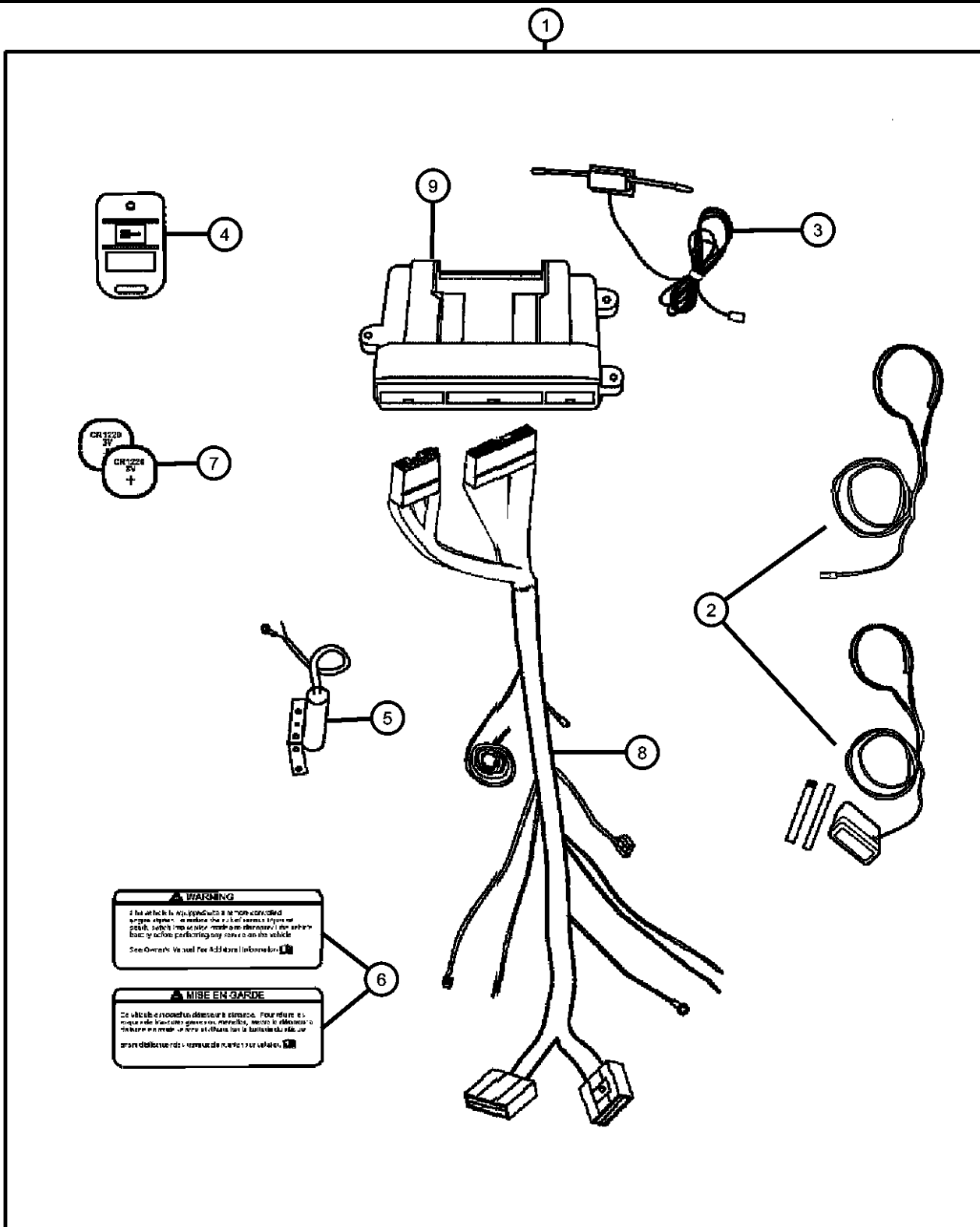
TRANSMISSION
DEJ = Transmission-6-Spd. Man. Getrag 238
DG6 = Transmission-4-Spd. Automatic, 42RLE
DGQ = Transmission-5-Spd Automatic 5-45RFE

AR = use ase required - = Non illustrated part

2005 ND



Remote Start - Installation Kit  
Figure 1-310



ITEM	PART NUMBER	QTY	LINE	SERIES	BODY	ENGINE	TRANS	TRIM	DESCRIPTION
1	82208996	1							INSTALL KIT, REMOTE START
2	05140470AA	1							ANTENNA
3	05140471AA	1							ANTENNA
4	05140472AA	1							TRANSMITTER
5	05140473AA	1							SWITCH
6	05140474AA	1							LABEL
7	05140773AA	1							BATTERY, Transmitter, 12 Per Package
8	05140773AA	1							HARNESS, HARNESS-ENGINE, Serviced in Electrical, (NOT SERVICED)
9	82208859	1							MODULE KIT, REMOTE START

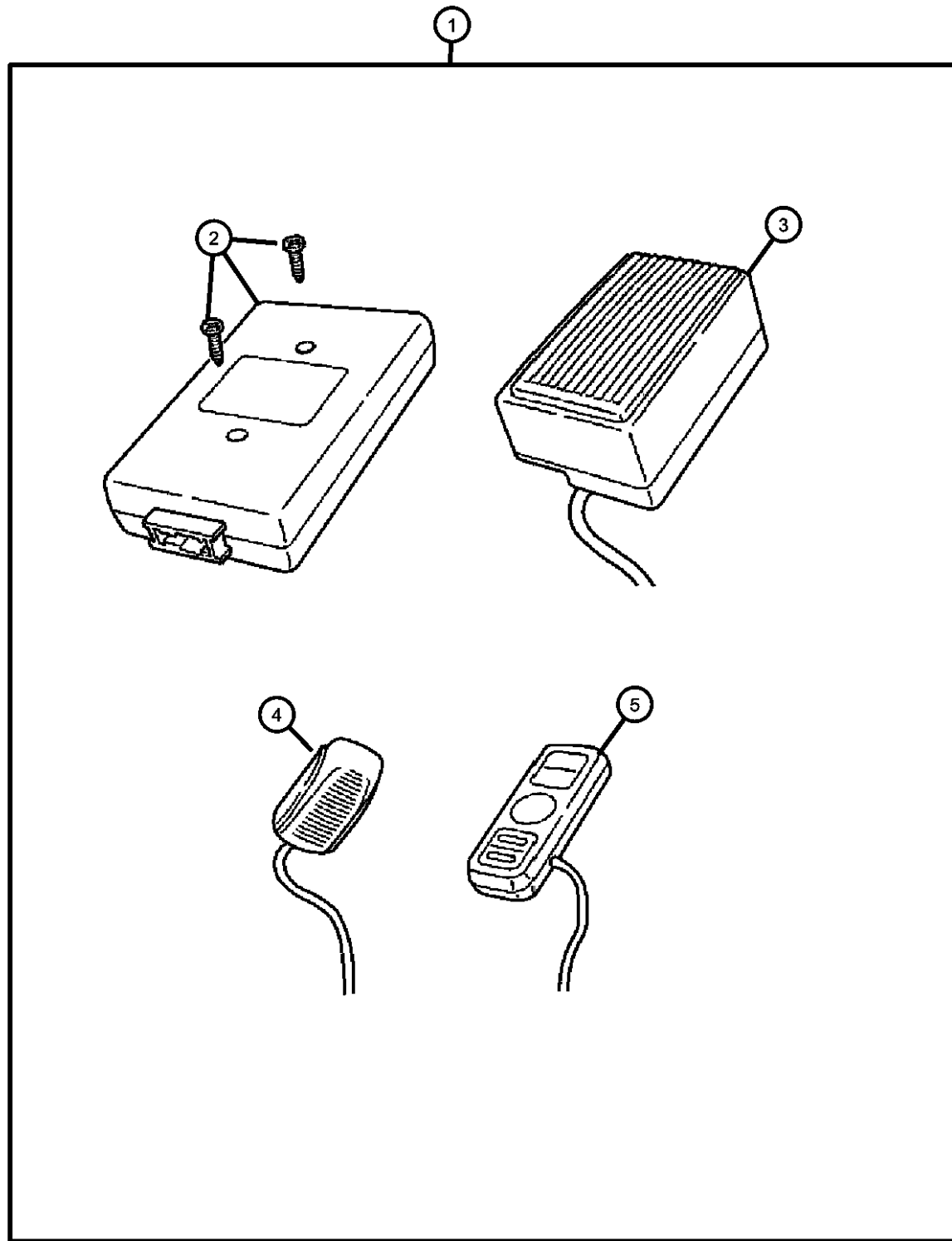
**WARNING**  
 If the vehicle is equipped with a remote-controlled engine system, to ensure the proper operation of the system, always use the remote control system to start the engine. Do not use the key to start the engine. See Owner's Manual for Address Information.

**MISE EN GARDE**  
 Ce véhicule est équipé d'un démarreur à distance. Pour assurer le bon fonctionnement du système, utilisez toujours le télécommande pour démarrer le moteur. Ne démarrez pas le moteur avec la clé. Voir le manuel de l'utilisateur pour plus de détails.

<b>DAKOTA (ND)</b>				
SERIES	LINE	BODY	ENGINE	TRANSMISSION
H = HIGHLINE	1 = Lt. Duty DODGE 2WD	33 = QUAD CAB 4-DR 6.5 FT BOX	EKG = Engine - 3.7L V6 EVA = Engine- 4.7L V8 MPI	DEJ = Transmission-6-Spd. Man. Getrag 238
L = LOWLINE	5 = Lt. Duty DODGE 4WD	84 = CREW CAB 4-DR W.B.1	EVC = Engine - 4.7L HO V8 MPI	DG6 = Transmission-4-Spd. Automatic, 42RLE
P = PREMIUM				DGQ = Transmission-5-Spd Automatic 5-45RFE

AR = use ase required - = Non illustrated part

**Hands Free /Cellular Phone Blue Tooth  
Figure 1-320**



ITEM	PART NUMBER	QTY	LINE	SERIES	BODY	ENGINE	TRANS	TRIM	DESCRIPTION
------	-------------	-----	------	--------	------	--------	-------	------	-------------

Note; For Warranty Repair On Item 2, Order Using Z Prefix

1	82207853AE	1							HANDS FREE KIT, Cellular Phone
2	05114359AD	1							MODULE, U Connect
3	05102026AA	1							SPEAKER, Front
4	05102025AA	1							MICROPHONE, Audio
5	05102027AA	1							CONTROLLER, Audio

**DAKOTA (ND)**

SERIES	LINE	BODY	ENGINE	TRANSMISSION
H = HIGHLINE	1 = Lt. Duty DODGE 2WD	33 = QUAD CAB 4-DR 6.5 FT BOX	EKG = Engine - 3.7L V6	DEJ = Transmission-6-Spd. Man. Getrag 238
L = LOWLINE	5 = Lt. Duty DODGE 4WD	84 = CREW CAB 4-DR W.B.1	EVA = Engine- 4.7L V8 MPI	DG6 = Transmission-4-Spd. Automatic, 42RLE
P = PREMIUM			EVC = Engine - 4.7L HO V8 MPI	DGQ = Transmission-5-Spd Automatic 5-45RFE

AR = use ase required - = Non illustrated part

2005 ND

# Group - 2

## Front Suspension & Drive

### Group - 2 Front Suspension & Drive

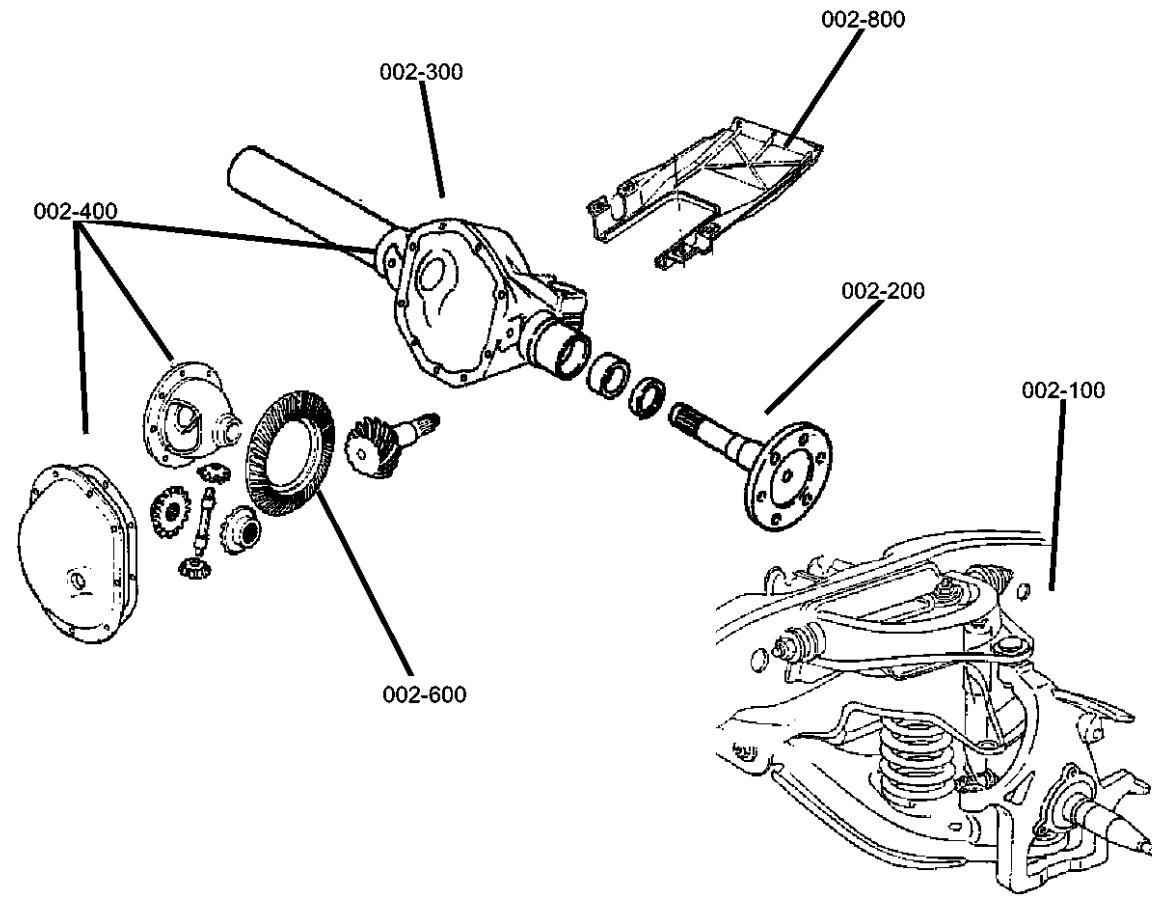


Illustration Title

Group-Fig. No.

#### Front Suspension

Suspension,Front,Control Arms,Shock,Knuckle ..... Fig. 2 - 110  
 Stabilizer Bar,Front..... Fig. 2 - 120

#### Front Axle Drive Shafts

Shaft,Front Drive Axle ..... Fig. 2 - 210

#### Front Axle Housing

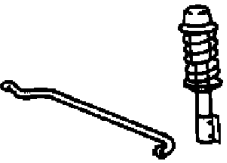

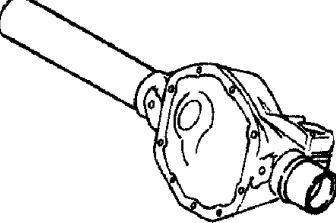
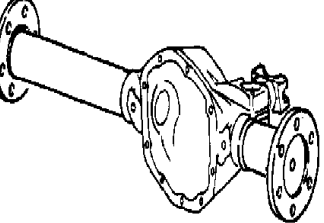
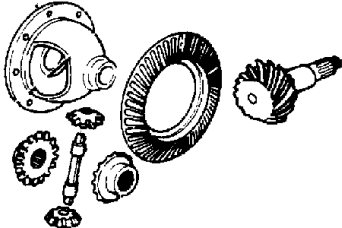
Housing,Front Axle..... Fig. 2 - 310

#### Front Axle Assembly

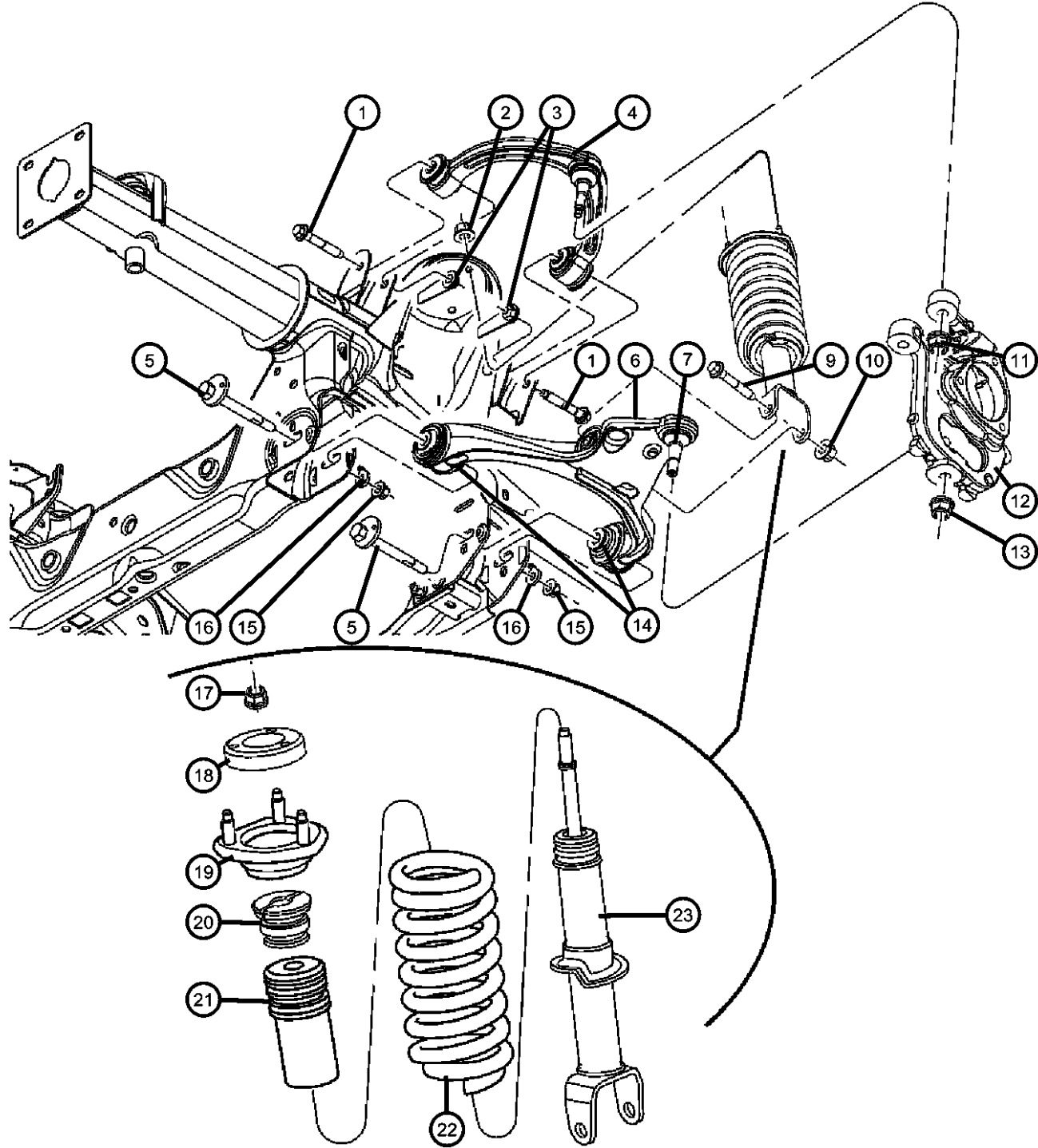
Axle Assembly,Front ..... Fig. 2 - 410

#### Front Axle Differential

Differential,Front Axle..... Fig. 2 - 610

<p><b>002-100</b> Front Suspension</p> 	<p><b>002-200</b> Front Axle Drive Shafts</p> 	<p><b>002-300</b> Front Axle Housing</p> 	<p><b>002-400</b> Front Axle Assembly</p> 
<p><b>002-600</b> Front Axle Differential</p> 			

**Suspension,Front,Control Arms,Spring,Shock,Knuckle**  
**Figure 2-110**



ITEM	PART NUMBER	QTY	LINE	SERIES	BODY	ENGINE	TRANS	TRIM	DESCRIPTION
------	-------------	-----	------	--------	------	--------	-------	------	-------------

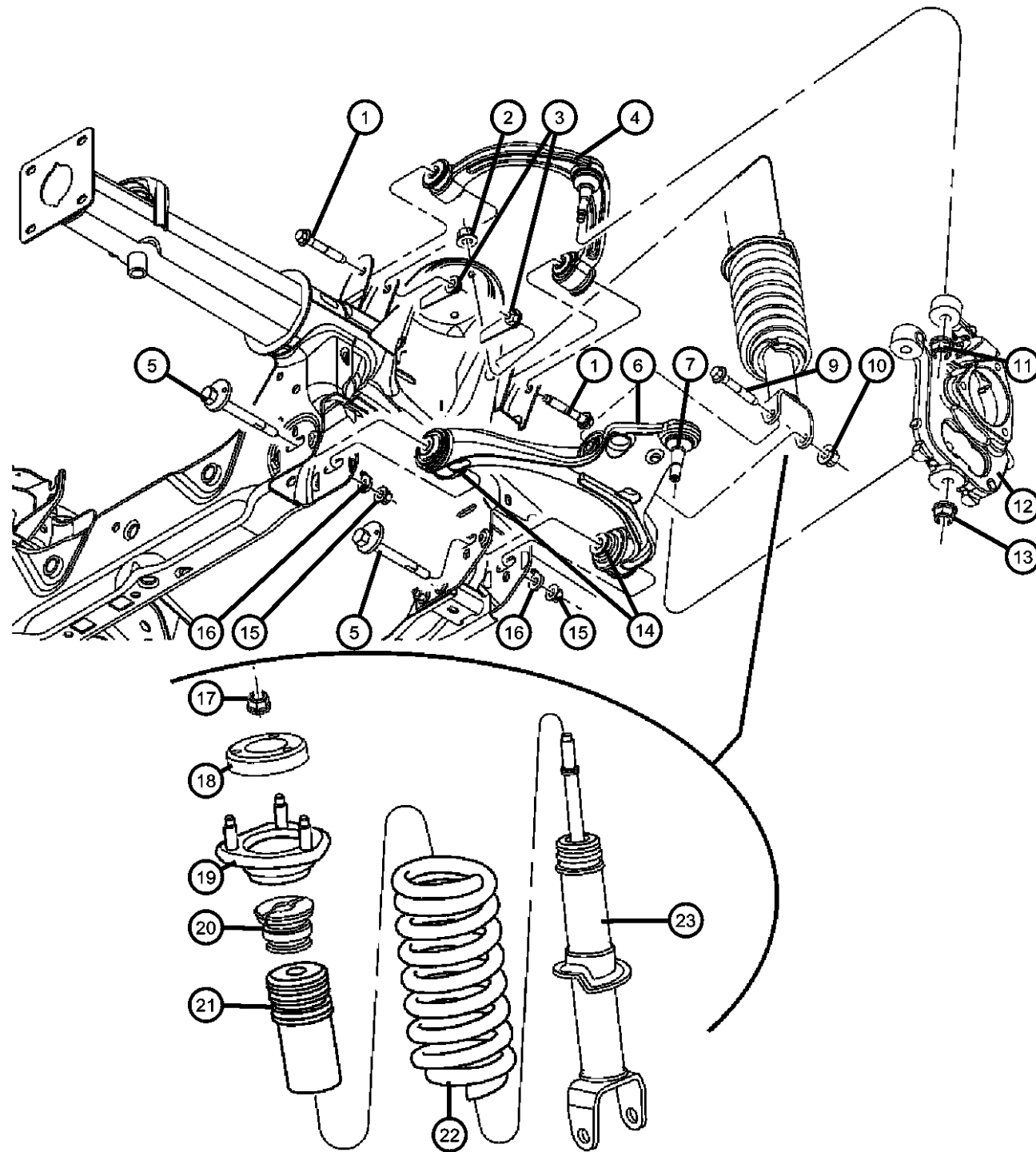
Note:Sales Codes :  
[ZAA] Through [ZPH]= Spring Sales Codes will be Found on Vehicle Identification Number [VIN] Sales Code Listing

1	06507654AA	4							BOLT, Hex Flange Head, UCA to Frame, Mounting
2	06502696	6							NUT, Hex Flange Lock, M14x1.50, Shock Mount to Frame, Mounting
3	06508175AA	4							LOCK NUT, M14-2.00, UCA to Frame, Mounting
4	52855100AC	2							ARM, Upper Control, FrontRight or Left
5	06508211AA	4							BOLT, Control Arm Cam, LCA to Frame, Mounting
6									ARM, Lower Control, Front
	52855106AB	1							With 3 Bushings, Right
	52855107AB	1							With 3 Bushings, Left
7	05161685AA	1							BALL JOINT PACKAGE, Lower Control Arm, With Snap Ring, Right or Left
-8	05161418AA	1							RING, Ball Joint, Snap, Right or Left
9	06507949AA	1							BOLT, Hex Flange Head, Shock to LCA, Mounting
10	06102252AA	2							NUT, Hex Flange Lock, Shock to LCA, Mounting
11	06505623AA	2							NUT AND WASHER, Ball Joint Upper, Mounting
12									KNUCKLE, Front
	52855116AA	1							Right
	52855117AA	1							Left
13	06505682AA	2							NUT, Hex Flange Lock, M16x1.5, Ball Joint Lower, Mounting
14									BUSHING, Control Arm
	52855112AA	2							To Frame, Front
	52855113AB	1							To Frame, Rear
15	06508212AA	4							NUT, LCA to Frame, Mounting
16	06508140AA	4							WASHER, Control Arm, LCA to Frame, Mounting
17	06506276AA	1							NUT, Hex Flange Lock, M12x1.75, Shock to Mount, Mounting
18	52855146AA	1							ISOLATOR, Spring
19	52013484AA	1							MOUNT, Shock Upper
20	52013486AA	1							GROMMET, Shock Absorber

<b>DAKOTA (ND)</b>				
SERIES	LINE	BODY	ENGINE	TRANSMISSION
H = HIGHLINE	1 = Lt. Duty DODGE 2WD	33 = QUAD CAB 4-DR 6.5 FT BOX	EKG = Engine - 3.7L V6 EVA = Engine- 4.7L V8 MPI	DEJ = Transmission-6-Spd. Man. Getrag 238
L = LOWLINE	5 = Lt. Duty DODGE 4WD	84 = CREW CAB 4-DR W.B.1	EVC = Engine - 4.7L HO V8 MPI	DG6 = Transmission-4-Spd. Automatic, 42RLE DGQ = Transmission-5-Spd Automatic 5-45RFE
P = PREMIUM				

AR = use ase required - = Non illustrated part

Suspension,Front,Control Arms,Spring,Shock,Knuckle  
Figure 2-110



ITEM	PART NUMBER	QTY	LINE	SERIES	BODY	ENGINE	TRANS	TRIM	DESCRIPTION
21	52013485AA	1							SHIELD, Shock Absorber Dust
22	52855080AE	1							SPRING, Front Coil
	52855081AE	1							[ZBH,ZPH]
	52855082AE	1							[ZCA,ZRA]
	52855083AE	1							[ZBJ,ZPJ]
	52855084AE	1							[ZCE,ZRE]
	52855085AE	1							[ZCB,ZRB]
		1							[ZBK,ZPK]
		1							[ZCF,ZRF]
		1							[ZCC,ZRC]
		1							[ZBL,ZPL]
		1							[ZCG,ZRG]
		1							[ZCD,ZRD]
		1							[ZBM,ZPM]
		1							[ZCH,ZRH]
23	05161265AB	1							SHOCK ABSORBER PACKAGE, Suspension, Front
	05161273AB	1							[ZAK,ZAU,ZBJ,ZBK,ZBL,ZBM,,ZPJ,
	05161274AB	1							[ZCA,ZCB,ZCC,ZCD,ZRA,ZRB,ZRC]
									[ZCE,ZCF,ZCH,ZCG,ZRE,ZRF,ZRG]

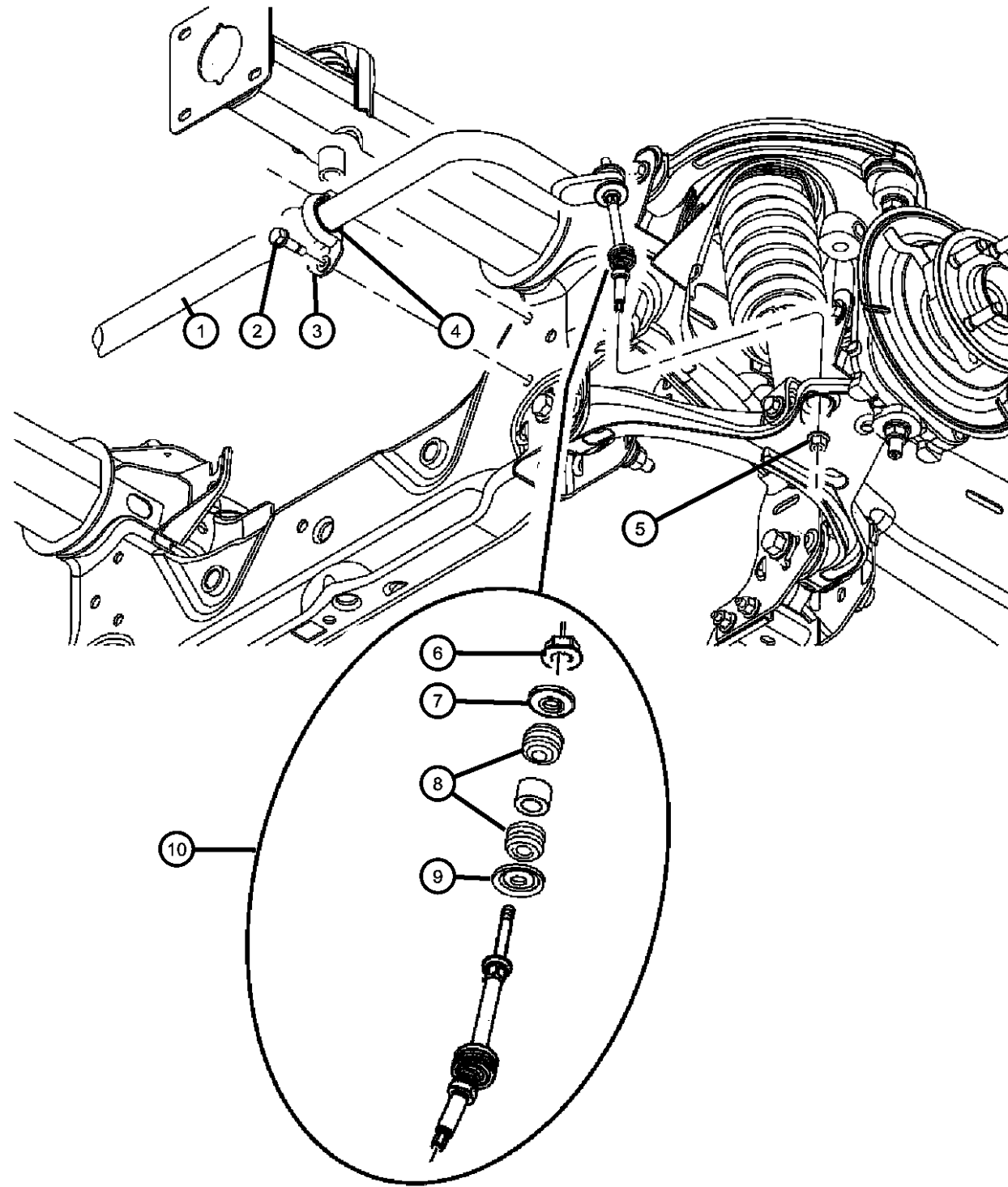
**DAKOTA (ND)**

SERIES	LINE	BODY	ENGINE	TRANSMISSION
H = HIGHLINE	1 = Lt. Duty DODGE 2WD	33 = QUAD CAB 4-DR 6.5 FT BOX	EKG = Engine - 3.7L V6	DEJ = Transmission-6-Spd. Man. Getrag 238
L = LOWLINE	5 = Lt. Duty DODGE 4WD	84 = CREW CAB 4-DR W.B.1	EVA = Engine- 4.7L V8 MPI	DG6 = Transmission-4-Spd. Automatic, 42RLE
P = PREMIUM			EVC = Engine - 4.7L HO V8 MPI	DGQ = Transmission-5-Spd Automatic 5-45RFE

AR = use ase required - = Non illustrated part

2005 ND

**Stabilizer Bar,Front**  
**Figure 2-120**



ITEM	PART NUMBER	QTY	LINE	SERIES	BODY	ENGINE	TRANS	TRIM	DESCRIPTION
1	52013744AA	1							BAR, Front Sway
2	06505961AA	4							SCREW AND WASHER, Hex Head, M10x1.5x40, Retainer to Frame, Mounting
3	52013696AA	2							RETAINER, Stabilizer Bar GrommetMounting
4	52013697AA	2							BUSHING, Stabilizer BarMounting
5	06502697	2							NUT, Hex Flange Lock, M12x1.75, Link to LCA, Mounting
6	06506746AA	2							NUT, Hex Lock, M10x1.5, Link to Sway Bar, Mounting
7									RETAINER, Stabilizer Bar Grommet
	52038115	2							Large Hole
	52038116	2							Small Hole
8	52037916	4							GROMMET, Link
9	05135731AA	2							LINK PACKAGE, Stabilizer Bar

**DAKOTA (ND)**

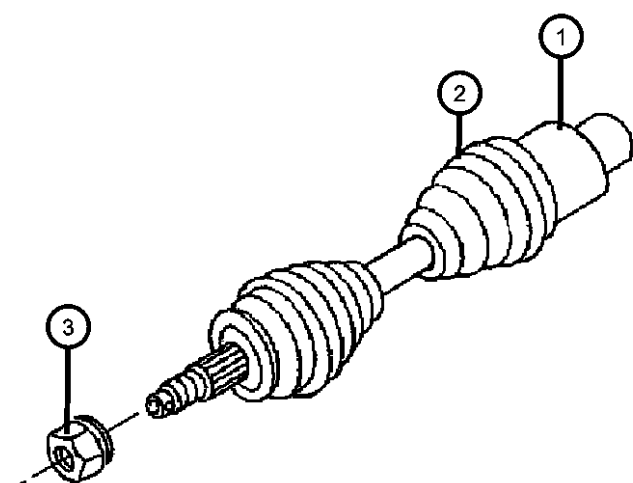
SERIES	LINE	BODY	ENGINE	TRANSMISSION
H = HIGHLINE	1 = Lt. Duty DODGE 2WD	33 = QUAD CAB 4-DR 6.5 FT BOX	EKG = Engine - 3.7L V6	DEJ = Transmission-6-Spd. Man. Getrag 238
L = LOWLINE	5 = Lt. Duty DODGE 4WD	84 = CREW CAB 4-DR W.B.1	EVA = Engine- 4.7L V8 MPI	DG6 = Transmission-4-Spd. Automatic, 42RLE
P = PREMIUM			EVC = Engine - 4.7L HO V8 MPI	DGQ = Transmission-5-Spd Automatic 5-45RFE

AR = use ase required - = Non illustrated part

2005 ND

**Shaft.Front Drive Axle  
Figure 2-210**

ITEM	PART NUMBER	QTY	LINE	SERIES	BODY	ENGINE	TRANS	TRIM	DESCRIPTION
1	52104697AA	2	5						SHAFT, Axle HalfRight or Left
2	05161608AA	1	5						BOOT KIT, Half Shaft, InnerRight or Left
3	06506454AA	2	5						NUT, Hex



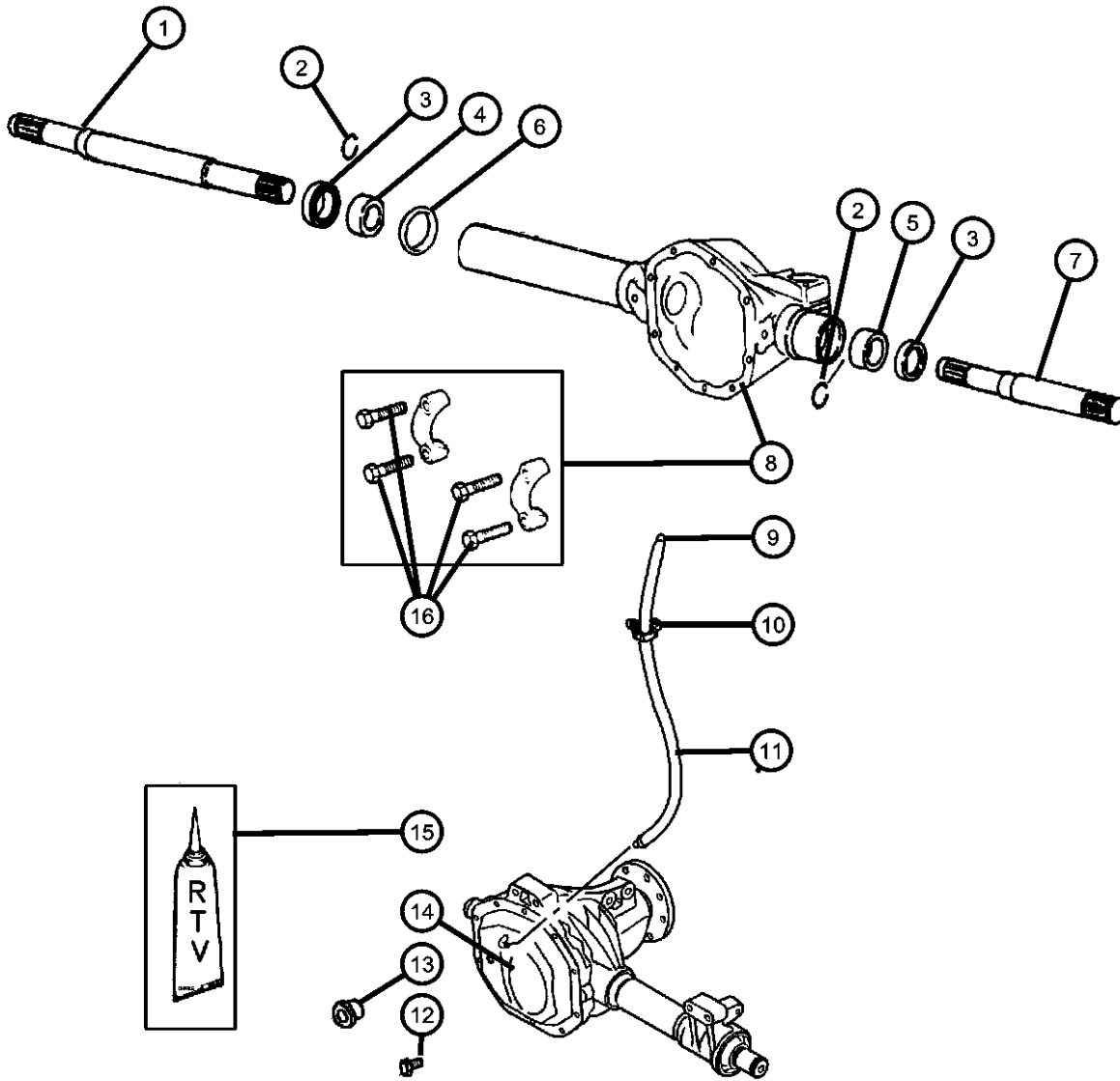
**DAKOTA (ND)**

SERIES	LINE	BODY	ENGINE	TRANSMISSION
H = HIGHLINE	1 = Lt. Duty DODGE 2WD	33 = QUAD CAB 4-DR 6.5 FT BOX	EKG = Engine - 3.7L V6	DEJ = Transmission-6-Spd. Man. Getrag 238
L = LOWLINE	5 = Lt. Duty DODGE 4WD	84 = CREW CAB 4-DR W.B.1	EVA = Engine- 4.7L V8 MPI	DG6 = Transmission-4-Spd. Automatic, 42RLE
P = PREMIUM			EVC = Engine - 4.7L HO V8 MPI	DGQ = Transmission-5-Spd Automatic 5-45RFE

AR = use ase required - = Non illustrated part

2005 ND

Housing,Front Axle  
Figure 2-310



ITEM	PART NUMBER	QTY	LINE	SERIES	BODY	ENGINE	TRANS	TRIM	DESCRIPTION
1	52069886AE	1	5						SHAFT, AxleRight, Intermediate
2	52069710AB	2	5						SNAP RING, Axle ShaftRight or Left
3	52069706AB	2	5						SEAL, Axle Drive ShaftRight or Left
4	52111167AA	1	5						BUSHING, Axle Shaft
5	52069707	1	5						BEARING, Axle ShaftLeft
6	52069888AB	2	5						O RING, Shaft Disconnect
7	52069887AE	1	5						SHAFT, AxleLeft, Intermediate
8	05015892AA	1	5						HOUSING, Axle, Includes Item 16
9	J5352955	1	5						VENT, Axle
10	52111416AA	1	5						CLIP
11	52111415AB	1	5						HOSE, Axle Vent
12	06505216AA	12	5						BOLT, Differential CoverMounting
13	52070428AA	1	5						PLUG, Differential Cover
14	52069713AB	1	5						COVER, Differential, With Vent
15	05010884AA	1	5						SEALANT, RTV, Cover, Differential
16	06100954	4	5						BOLT, Differential, Carrier Bearing Cap, Mounting

**DAKOTA (ND)**

SERIES      LINE  
H = HIGHLINE    1 = Lt. Duty DODGE 2WD  
L = LOWLINE     5 = Lt. Duty DODGE 4WD  
P = PREMIUM

BODY                      ENGINE  
33 = QUAD CAB 4-DR 6.5 FT    EKG = Engine - 3.7L V6  
BOX                        EVA = Engine- 4.7L V8 MPI  
84 = CREW CAB 4-DR W.B.1    EVC = Engine - 4.7L HO V8 MPI

TRANSMISSION  
DEJ = Transmission-6-Spd. Man. Getrag 238  
DG6 = Transmission-4-Spd. Automatic, 42RLE  
DGQ = Transmission-5-Spd Automatic 5-45RFE

AR = use ase required - = Non illustrated part

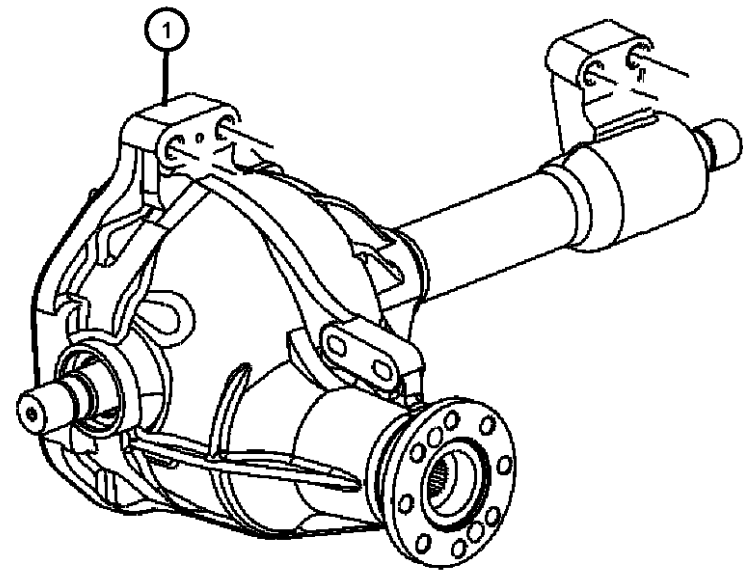
2005 ND



**Axle Assembly,Front  
Figure 2-410**

ITEM	PART NUMBER	QTY	LINE	SERIES	BODY	ENGINE	TRANS	TRIM	DESCRIPTION
------	-------------	-----	------	--------	------	--------	-------	------	-------------

Note:Sales Codes;  
[DMD]=Axle Ratio - 3.55  
[DMH]=Axle Ratio - 3.92



1									AXLE, Service Front
	52069680AE	1	5						[DMD]
	04874468								Mopar SAE 80W-90 Gear Lube Quart Bottle
	68003054AA								Mopar SAE 80W-90 Gear Lube 16 Gallon Keg
	05010320AA								Mopar SAE 75W-90 Synthetic Gear Lube Quart
	68003056								Mopar SAE 75W-90 Synthetic Gear Lube 16 Gallon Keg
	P5007326								Performance Mobil 1, 75W - 90 Synthetic Gear Lube
	52069862AE	1	5						[DMH]
	04874468								Mopar SAE 80W-90 Gear Lube Quart Bottle
	68003054AA								Mopar SAE 80W-90 Gear Lube 16 Gallon Keg
	05010320AA								Mopar SAE 75W-90 Synthetic Gear Lube Quart
	68003056								Mopar SAE 75W-90 Synthetic Gear Lube 16 Gallon Keg
	P5007326								Performance Mobil 1, 75W - 90 Synthetic Gear Lube

**DAKOTA (ND)**

SERIES	LINE	BODY	ENGINE	TRANSMISSION
H = HIGHLINE	1 = Lt. Duty DODGE 2WD	33 = QUAD CAB 4-DR 6.5 FT BOX	EKG = Engine - 3.7L V6	DEJ = Transmission-6-Spd. Man. Getrag 238
L = LOWLINE	5 = Lt. Duty DODGE 4WD	84 = CREW CAB 4-DR W.B.1	EVA = Engine- 4.7L V8 MPI	DG6 = Transmission-4-Spd. Automatic, 42RLE
P = PREMIUM			EVC = Engine - 4.7L HO V8 MPI	DGQ = Transmission-5-Spd Automatic 5-45RFE

AR = use ase required - = Non illustrated part

2005 ND

Differential,Front Axle

Figure 2-610

ITEM	PART NUMBER	QTY	LINE	SERIES	BODY	ENGINE	TRANS	TRIM	DESCRIPTION
------	-------------	-----	------	--------	------	--------	-------	------	-------------

Note:Sales Codes;  
 [DMD]=Axle Ratio - 3.55  
 [DMH]=Axle Ratio - 3.92

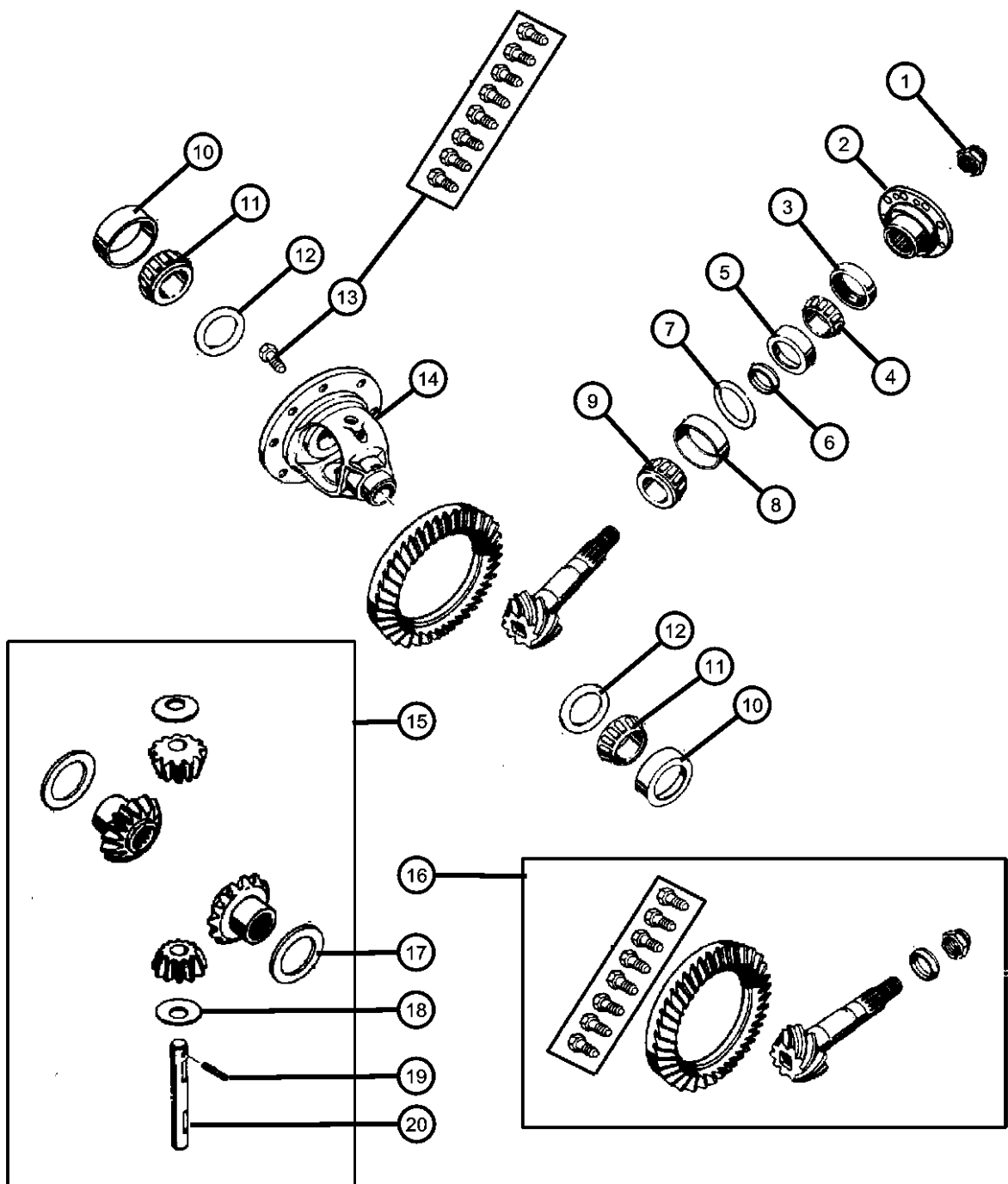
1	06036572AA	1	5						NUT, Hex, .875-14
2	52105400AA	1	5						FLANGE, Driveshaft Yoke
3	52069700	1	5						SEAL, Drive Pinion
4	01820552	1	5						BEARING, Drive PinionFront
5	01820551	1	5						CUP, Pinion BearingFront
6	03507678	1	5						SPACER, Drive Pinion Bearing, Crush
7									SHIM PACKAGE, Pinion
	05015874AA	1	5						[0.64MM to 0.91MM]
	05015875AA	1	5						[0.94MM to 1.27MM]
	05015876AA	1	5						[1.30MM to 1.57MM]
8	52069693	1	5						CUP, Pinion BearingRear
9	52069691	1	5						BEARING, Drive PinionRear
10	52069916AA	2	5						CUP, Differential Side
11	52069915AA	2	5						BEARING, Differential
12									SHIM PACKAGE, Differential
	05015884AA	1	5						2.82MM to 3.05MM
	05015885AA	1	5						3.07MM to 3.35MM
	05015886AA	1	5						3.38MM to 3.66MM
	05015887AA	1	5						3.68MM to 3.96MM
	05015888AA	1	5						3.99MM to 4.27MM
	05015889AA	1	5						4.29MM to 4.57MM
	05015890AA	1	5						4.60MM to 4.88MM
13	04443158	1	5						SCREW PACKAGE, Axle Drive Gear
14	52070437AA	1	5						CASE ASSEMBLY, Differential, Includes Item 15
15	05072492AA	1	5						GEAR PACKAGE, Differential
16									GEAR KIT, Ring And Pinion
	05015873AA	1	5						[DMD]
	05015895AB	1	5						[DMH]
17	05015864AA	1	5						WASHER PACKAGE, Side Gear Thrust
18	02852912	2	5						WASHER, Pinion GearThrust

DAKOTA (ND)

SERIES	LINE	BODY	ENGINE	TRANSMISSION
H = HIGHLINE	1 = Lt. Duty DODGE 2WD	33 = QUAD CAB 4-DR 6.5 FT	EKG = Engine - 3.7L V6	DEJ = Transmission-6-Spd. Man. Getrag 238
L = LOWLINE	5 = Lt. Duty DODGE 4WD	BOX	EVA = Engine- 4.7L V8 MPI	DG6 = Transmission-4-Spd. Automatic, 42RLE
P = PREMIUM		84 = CREW CAB 4-DR W.B.1	EVC = Engine - 4.7L HO V8 MPI	DGQ = Transmission-5-Spd Automatic 5-45RFE

AR = use ase required - = Non illustrated part

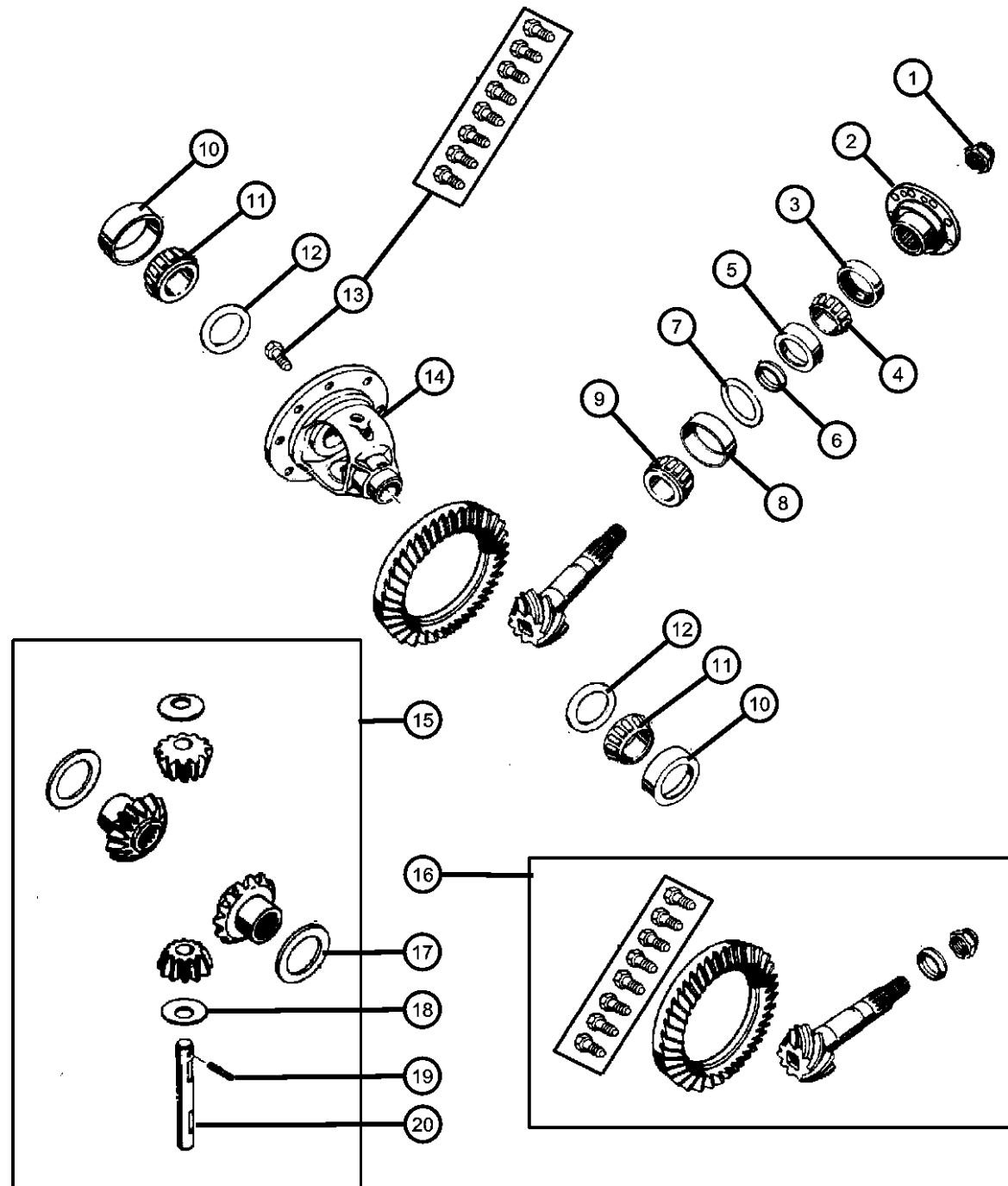
2005 ND



Differential,Front Axle  
Figure 2-610

ITEM	PART NUMBER	QTY	LINE	SERIES	BODY	ENGINE	TRANS	TRIM	DESCRIPTION
------	-------------	-----	------	--------	------	--------	-------	------	-------------

19	52070338AA	1	5						PIN, Differential Shaft
20	52069657	1	5						SHAFT, Differential Pinion



DAKOTA (ND)

SERIES

H = HIGHLINE  
L = LOWLINE  
P = PREMIUM

LINE

1 = Lt. Duty DODGE 2WD  
5 = Lt. Duty DODGE 4WD

BODY

33 = QUAD CAB 4-DR 6.5 FT  
BOX  
84 = CREW CAB 4-DR W.B.1

ENGINE

EKG = Engine - 3.7L V6  
EVA = Engine- 4.7L V8 MPI  
EVC = Engine - 4.7L HO V8  
MPI

TRANSMISSION

DEJ = Transmission-6-Spd. Man.  
Getrag 238  
DG6 = Transmission-4-Spd.  
Automatic, 42RLE  
DGQ = Transmission-5-Spd Automatic  
5-45RFE

AR = use ase required - = Non illustrated part

2005 ND

# Group - 3

## Rear Axle

### Group - 3 Rear Axle

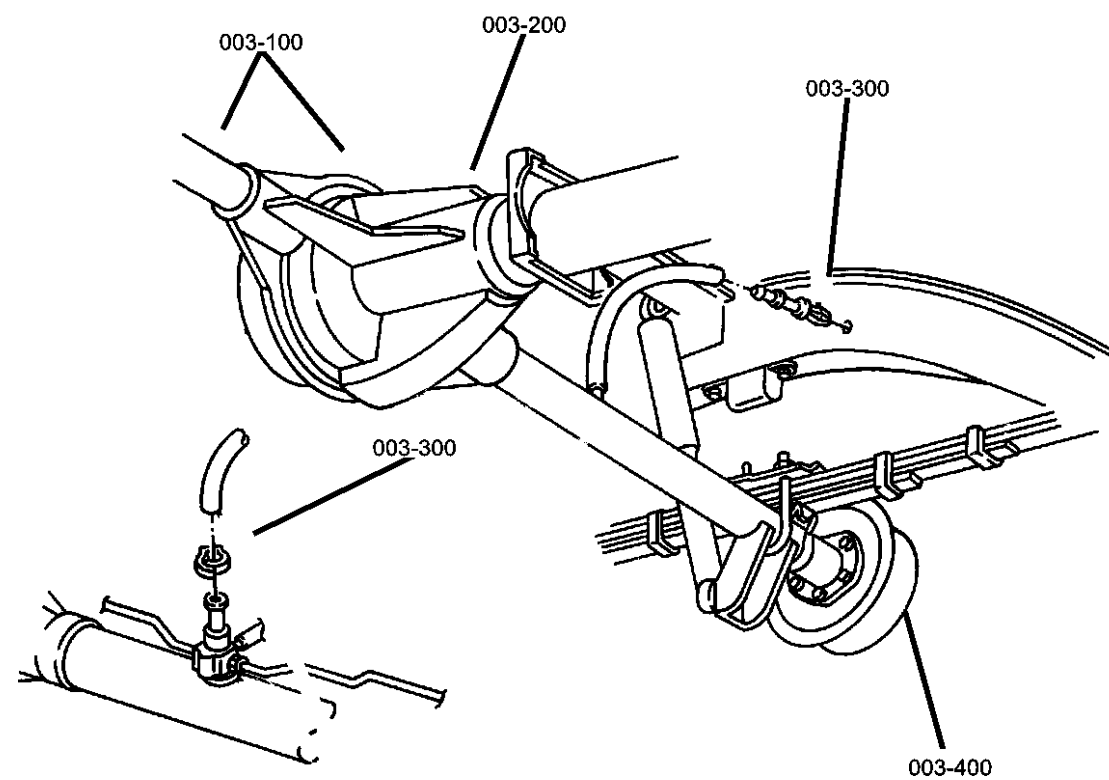


Illustration Title

Group-Fig. No.

#### Rear Axle

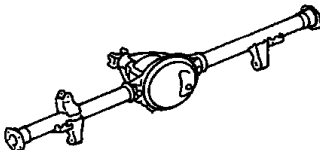
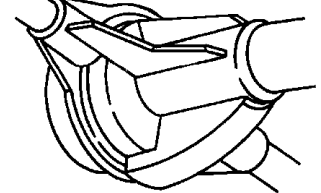
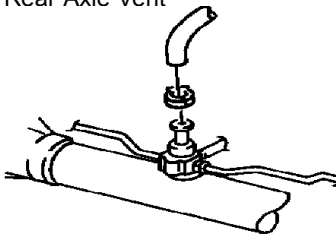
Axle Assembly,Rear,Corporate 8.25 [DRA] .....	Fig. 3 - 110
Axle Assembly,Rear,Corporate 9.25LD [DRB] .....	Fig. 3 - 120

#### Differential and Housing

Axle,Rear,with Differential and Housing,Corporate 8.25 [DRA].....	Fig. 3 - 210
Axle,Rear,with Differential and Housing,Corporate 9.25LD [DRB] .....	Fig. 3 - 220

#### Rear Axle Vent

Vent,Axle.....	Fig. 3 - 310
----------------	--------------

<p><b>003-100</b> Rear Axle</p> 	<p><b>003-200</b> Differential and Housing</p> 	<p><b>003-300</b> Rear Axle Vent</p> 	
--	--	---	--