

VIN PLATE DECODING INFORMATION

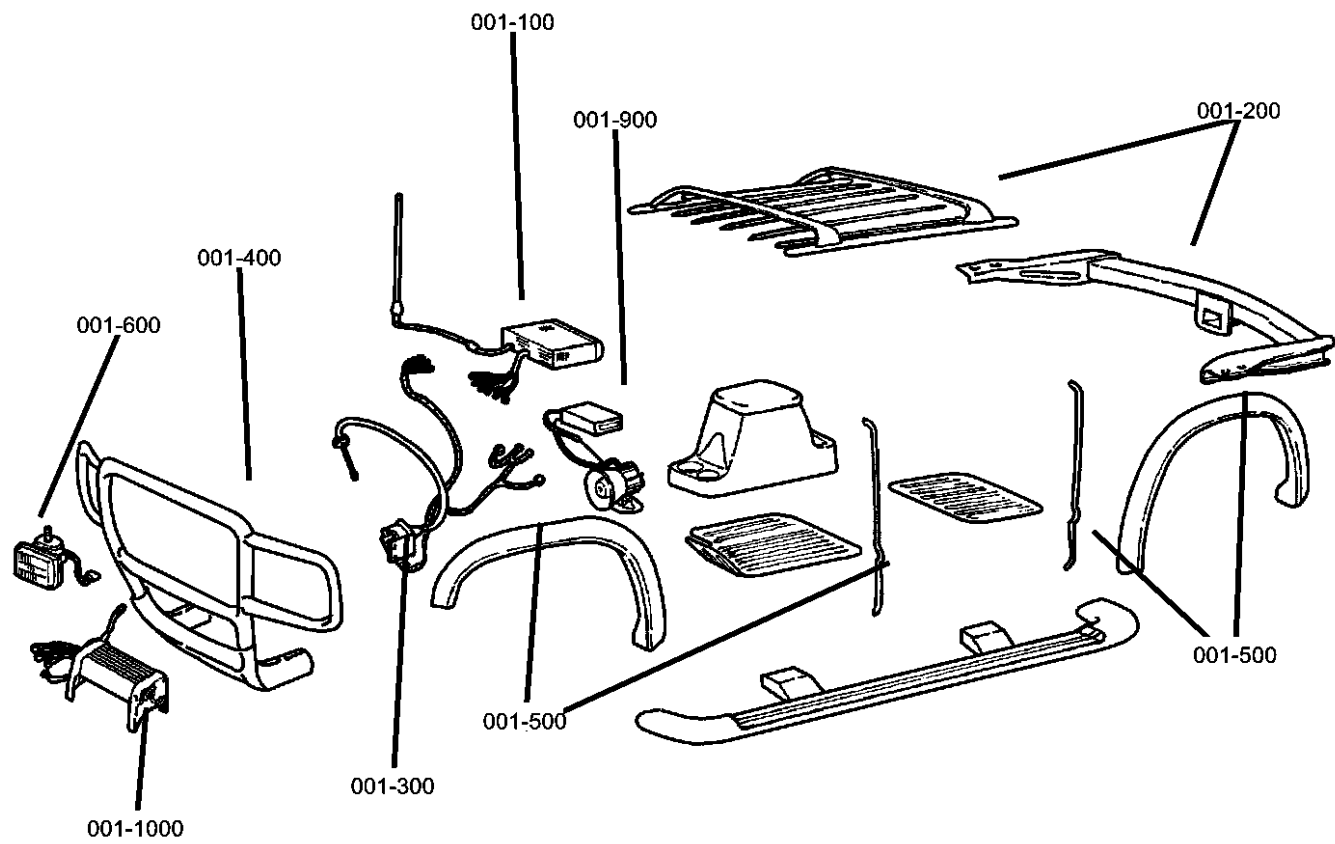
1	2	3	4	5	6	7	8	9	10	11	12 thru 17
Country	Make	Vehicle Type	Other	Line	Series	Body Style	Engine	Check Digit	Model Year	Assy. Plant	Sequence No.

The following table interprets the VIN Plate position shown above.

Position	Interpretation	Codes = Description
1	Country of Origin	1 = U.S.
2	Assembler	B = Dodge
3	Vehicle Type	7 = Truck
4	GVWR & Pass. Safety	D = 0-3000 lbs (0-1360 kg) E = 3001-4000 lbs (1361-1814 kg) F = 4001-5000 lbs (1815-2267 kg) G = 5001-6000 lbs (2268-2721 kg) H = 6001-7000 lbs (2722-3175 kg) J = 7001-8000 lbs (3176-3628 kg) K = 8001-9000 lbs (3629-4082 kg) L = 9001-10000 lbs (4083-4535 kg) M = 10001-14000 lbs (4536-6350 kg)
5	Vehicle Line	G = Dakota, Dakota/Sport, Dakota 4x4 L = Dakota, Dakota/Sport, Dakota 4x2
6	Series	2 = Dakota/Sport/SLT
7	Body Style	2 = Club Cab (2 Door) 3 = Club Cab (4WD) 6 = Regular Cab (2WD)
8	Engine	N = 4.7L 8 Cyl Gasoline (MPI) (EVA) P = 2.5L 4 Cyl. (EPE) X = 3.9L 6 Cyl. (EHC) Z = 5.9L 8 Cyl. (EML)
9	Check Digit	0 = Check Digit 0 = Check Digit 0 = Check Digit
10	Model Year	X = 1999 V = 1997 W = 1998 1 = 2001
11	Assembly Plant	S = Dodge City
12 thru 17	Vehicle Build Sequence	Model Year Assembly Sequence

Group - 1

Component Parts for Mopar Accessories



Group - 1 Component Parts for Mopar Accessories

Illustration Title

Group-Fig. No.

Audio & Electronics

Player Kit - CD Changer - 6 Disc Fig. 1 - 110
 Install Kit -CD Changer - Trunk Fig. 1 - 130

Carriers & Cargo Hauling

Carrier Kit - Bike Fig. 1 - 210
 Carrier Kit - Ski Fig. 1 - 220
 Receiver Kit - Trailer Tow Fig. 1 - 230
 Wiring Kit - Trailer Tow - 7 Way Fig. 1 - 240
 Wiring Kit - Trailer Tow - 4 Way Fig. 1 - 242
 Cooler Kit - Transmission Oil Fig. 1 - 250
 Cover Kit - Tonneau Fig. 1 - 260
 Cover Kit - Folding Fig. 1 - 270
 Cover Kit - Tonneau Fig. 1 - 280

Driving Convenience

Control Package - Speed Fig. 1 - 310
 Mounting Kit - Cellular Phone Fig. 1 - 320

Exterior Appearance

Brush Guard Fig. 1 - 420
 Grill Guard Fig. 1 - 422
 Running Board Fig. 1 - 430

Exterior Protection

Bedliner, Trays and Mats Fig. 1 - 510
 Shield Kit - Air Front Fig. 1 - 530

Fog Lights & Electrical


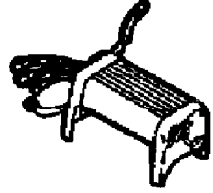


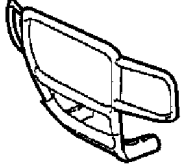
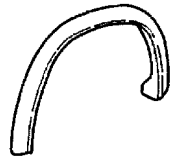


Heater Kit - Engine Block Fig. 1 - 610
 Light Kit - Off Road Fig. 1 - 620

Security

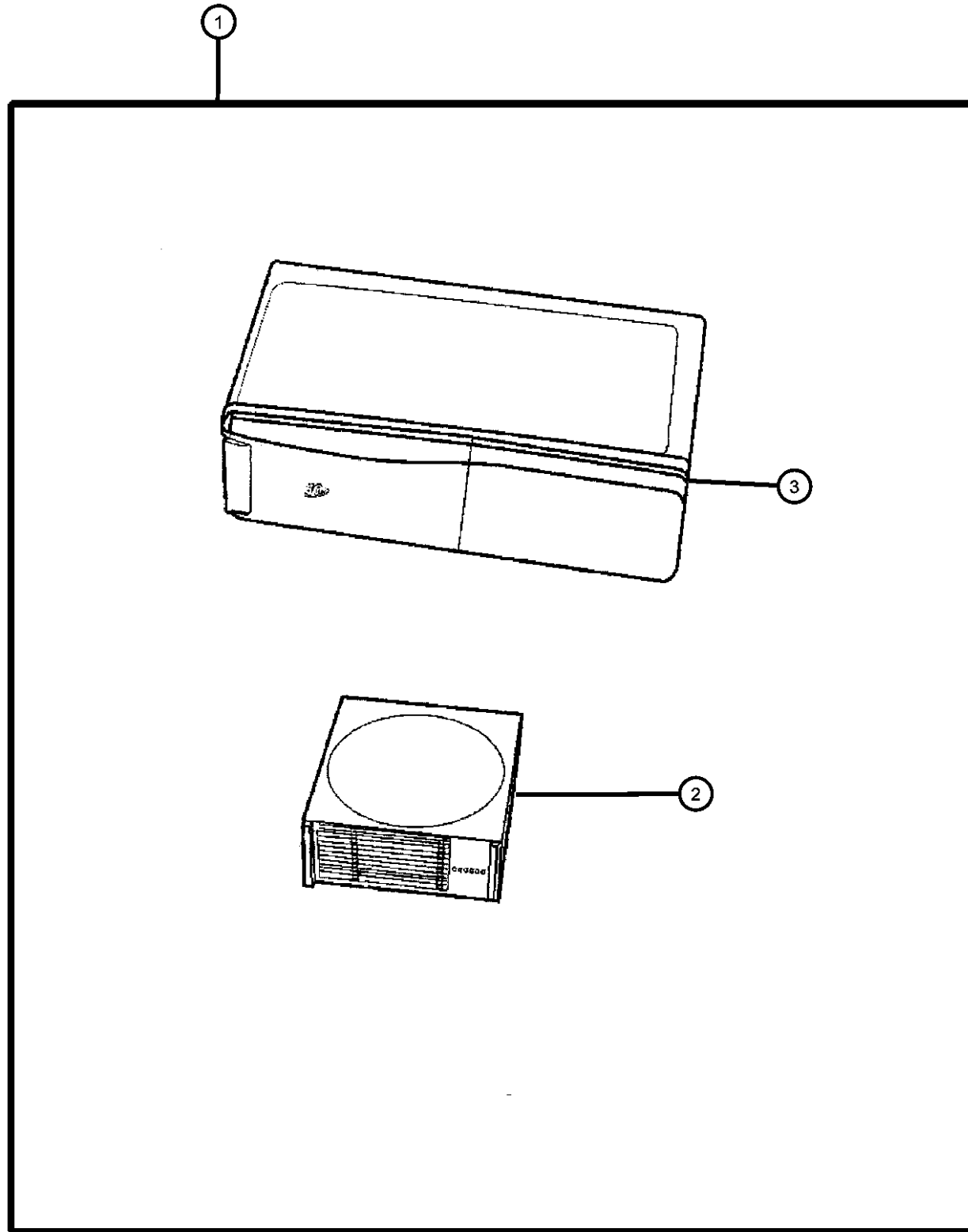
Alarm - EVS II Fig. 1 - 914

4 - Wheeling & Off Road

Winch Kit - Power Fig. 1 - 1010
 Plate Package - Skid, Front Fig. 1 - 1020
 Plate Package - Skid, Fuel Tank Fig. 1 - 1022

<p>001-100 Audio & Electronics</p> 	<p>001-1000 4 - Wheeling & Off Road</p> 	<p>001-200 Carriers & Cargo Hauling</p> 	<p>001-300 Driving Convenience</p> 
<p>001-400 Exterior Appearance</p> 	<p>001-500 Exterior Protection</p> 	<p>001-600 Fog Lights & Electrical</p> 	<p>001-900 Security</p> 

Player Kit - CD Changer - 6 Disc
Figure 1-110



ITEM	PART NUMBER	QTY	LINE	SERIES	BODY	ENGINE	TRANS	TRIM	DESCRIPTION
1	82203465	1							PLAYER KIT, CD Changer - 6 Disc, For Radios with CD Controls
2	04797433	1							MAGAZINE, CD Changer
3	04797433	1							CHANGER, CD, Serviced in Kit, (NOT SERVICED)

DAKOTA (AN)

SERIES LINE
L = Dakota (All) 1 = Lt. Duty DODGE 2WD
5 = Lt. Duty DODGE 4WD

BODY
31 = CLUB CAB 2-DR (131 WB)
84 = CREW CAB 4-DR (131 WB)
61 = REG CAB (112 WB)

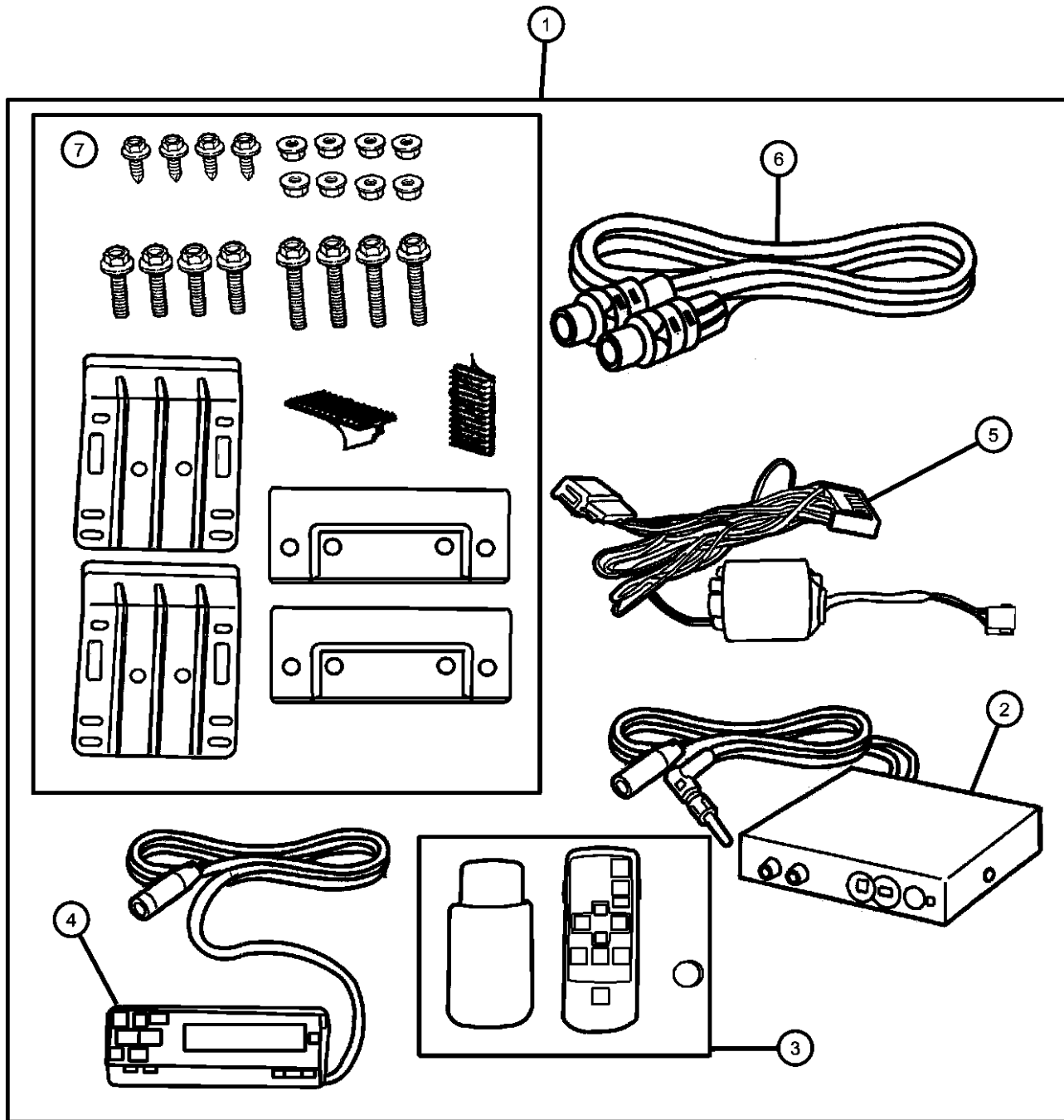
ENGINE
EHC = ENGINE - "MAGNUM" 3.9L SMPI V6
EML = ENGINE - 5.9L V8 MPI
EPE = ENGINE - 2.5L POWER TECH I-4 Cyl.
EVA = ENGINE- 4.7L V8 MPI

TRANSMISSION
DDK = TRANSMISSION - 5-SPEED HD MANUAL
DG4 = TRANSMISSION-MULTI-SPEED AUTO, 45RFE
DGK = TRANSMISSION - 4-SPD. AUTOMATIC,42RE
DDC = TRANSMISSION - 5-SPEED HD MANUAL
DGQ = TRANSMISSION-5SPD AUTOMATIC 5-45RFE
DGT = TRANSMISSION - 4-SPD. AUTOMATIC,46RE
DBB = ALL MANUAL TRANSMISSIONS
DG0 = TRANSMISSIONS - ALL AUTOMATIC

AR = use ase required - = Non illustrated part

2001 AN

**Install Kit -CD Changer - Trunk
Figure 1-130**



ITEM	PART NUMBER	QTY	LINE	SERIES	BODY	ENGINE	TRANS	TRIM	DESCRIPTION
1	82202292	1							INSTALL KIT, CD Changer - Trunk
2	82202292	1							MODULATOR, FM Changer, Serviced in package, (NOT SERVICED)
3	05017217AA	1							CONTROLLER, CD Wireless
4	05017217AA	1							CONTROLLER, CD Wired, (NOT SERVICED)
5	04465117	1							ADAPTOR, A/C
6	04465113	1							CABLE, Din
7	04465113	1							HARDWARE KIT, Mounting, Serviced in package, (NOT SERVICED)

DAKOTA (AN)

SERIES	LINE
L = Dakota (All)	1 = Lt. Duty DODGE 2WD 5 = Lt. Duty DODGE 4WD

BODY

31 = CLUB CAB 2-DR (131 WB)
84 = CREW CAB 4-DR (131 WB)
61 = REG CAB (112 WB)

ENGINE

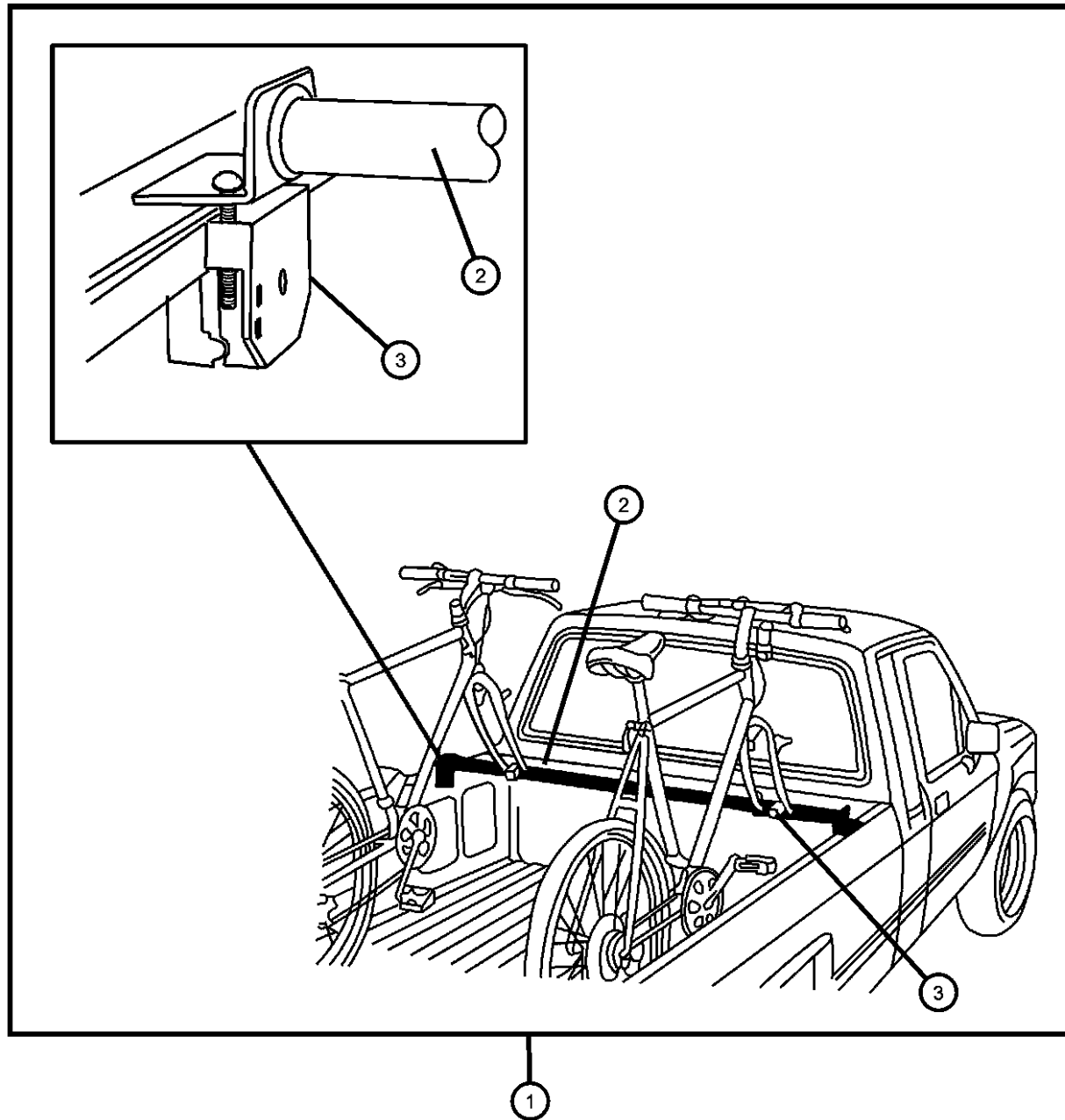
EHC = ENGINE - "MAGNUM" 3.9L SMPI V6
EML = ENGINE - 5.9L V8 MPI
EPE = ENGINE - 2.5L POWER TECH I-4 Cyl.
EVA = ENGINE- 4.7L V8 MPI

TRANSMISSION

DDK = TRANSMISSION - 5-SPEED HD MANUAL
DG4 = TRANSMISSION-MULTI-SPEED AUTO, 45RFE
DGK = TRANSMISSION - 4-SPD. AUTOMATIC,42RE
DDC = TRANSMISSION - 5-SPEED HD MANUAL
DGQ = TRANSMISSION-5SPD AUTOMATIC 5-45RFE
DGT = TRANSMISSION - 4-SPD. AUTOMATIC,46RE
DBB = ALL MANUAL TRANSMISSIONS
DG0 = TRANSMISSIONS - ALL AUTOMATIC

AR = use ase required - = Non illustrated part

Carrier Kit - Bike
Figure 1-210



ITEM	PART NUMBER	QTY	LINE	SERIES	BODY	ENGINE	TRANS	TRIM	DESCRIPTION
1	82203189	1	1, 5		31, 61, 84				CARRIER KIT, Bike
2	05018178AA	1	1, 5		31, 61, 84				HARDWARE KIT, Bike Carrier, Telescoping Bar
3	05018184AA	1	1, 5		31, 61, 84				HARDWARE KIT, Bike Carrier, Rail Clamps and Fork Mounts
-4	82203193	1	1, 5		31, 61, 84				ADAPTER KIT, Bike, 4 Bike Conversion
-5	82203191	1	1, 5		31, 61, 84				CARRIER KIT, Bike Wheel
-6	82203192	1	1, 5		31, 61, 84				LOCK KIT, Carrier

DAKOTA (AN)

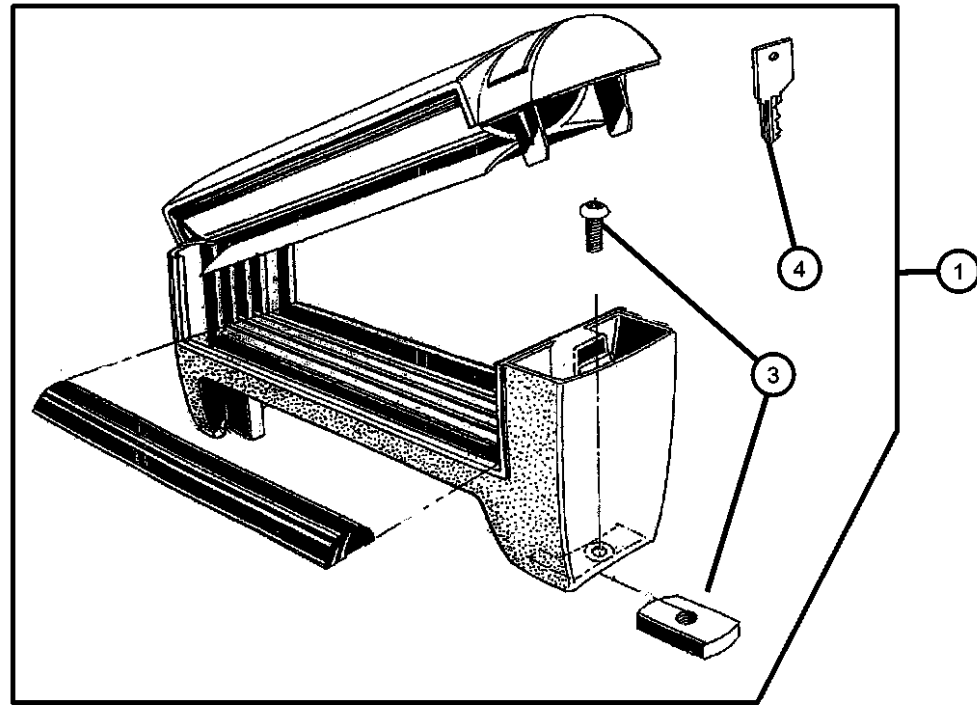
SERIES LINE
L = Dakota (All) 1 = Lt. Duty DODGE 2WD
5 = Lt. Duty DODGE 4WD

BODY
31 = CLUB CAB 2-DR (131 WB)
84 = CREW CAB 4-DR (131 WB)
61 = REG CAB (112 WB)

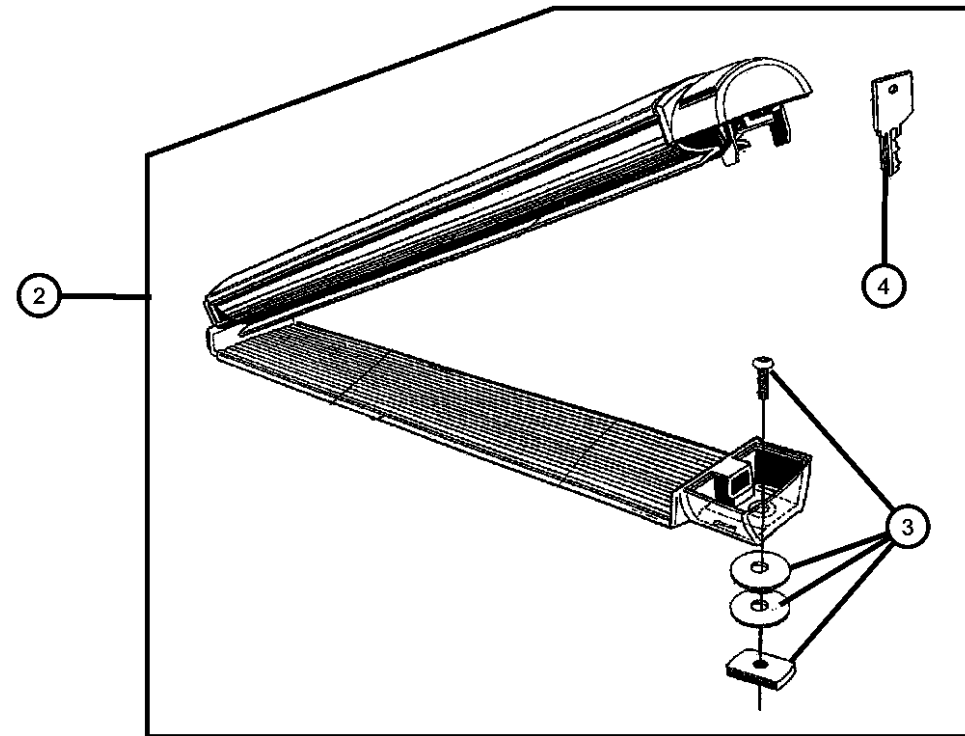
ENGINE TRANSMISSION
EHC = ENGINE - "MAGNUM" 3.9L SMPI V6
EML = ENGINE - 5.9L V8 MPI
EPE = ENGINE - 2.5L POWER TECH I-4 Cyl.
EVA = ENGINE- 4.7L V8 MPI
DDK = TRANSMISSION - 5-SPEED HD MANUAL
DG4 = TRANSMISSION-MULTI-SPEED AUTO, 45RFE
DGK = TRANSMISSION - 4-SPD. AUTOMATIC, 42RE
DDC = TRANSMISSION - 5-SPEED HD MANUAL
DGQ = TRANSMISSION-5SPD AUTOMATIC 5-45RFE
DGT = TRANSMISSION - 4-SPD. AUTOMATIC, 46RE
DBB = ALL MANUAL TRANSMISSIONS
DGO = TRANSMISSIONS - ALL AUTOMATIC

AR = use ase required - = Non illustrated part

Carrier Kit - Ski
Figure 1-220



ITEM	PART NUMBER	QTY	LINE	SERIES	BODY	ENGINE	TRANS	TRIM	DESCRIPTION
NOTE: New keys are Vendor Ship Direct.									
1	82203474	1	1, 5		84				CARRIER KIT, Ski - 2 Pair, High Mount
2	82203472	1	1, 5		84				CARRIER KIT, Ski
3	05018389AA	1	1, 5		84				HARDWARE KIT, Mounting High Mount
	05019077AA	1	1, 5		84				
4	05019077AA	1							KEY, Master, (NOT SERVICED)



DAKOTA (AN)

SERIES LINE
L = Dakota (All) 1 = Lt. Duty DODGE 2WD
5 = Lt. Duty DODGE 4WD

BODY
31 = CLUB CAB 2-DR (131 WB)
84 = CREW CAB 4-DR (131 WB)
61 = REG CAB (112 WB)

ENGINE
EHC = ENGINE - "MAGNUM" 3.9L SMPI V6
EML = ENGINE - 5.9L V8 MPI
EPE = ENGINE - 2.5L POWER TECH I-4 Cyl.
EVA = ENGINE- 4.7L V8 MPI

TRANSMISSION
DDK = TRANSMISSION - 5-SPEED HD MANUAL
DG4 = TRANSMISSION-MULTI-SPEED AUTO, 45RFE
DGK = TRANSMISSION - 4-SPD. AUTOMATIC, 42RE
DDC = TRANSMISSION - 5-SPEED HD MANUAL
DGQ = TRANSMISSION-5SPD AUTOMATIC 5-45RFE
DGT = TRANSMISSION - 4-SPD. AUTOMATIC, 46RE
DBB = ALL MANUAL TRANSMISSIONS
DG0 = TRANSMISSIONS - ALL AUTOMATIC

AR = use ase required - = Non illustrated part

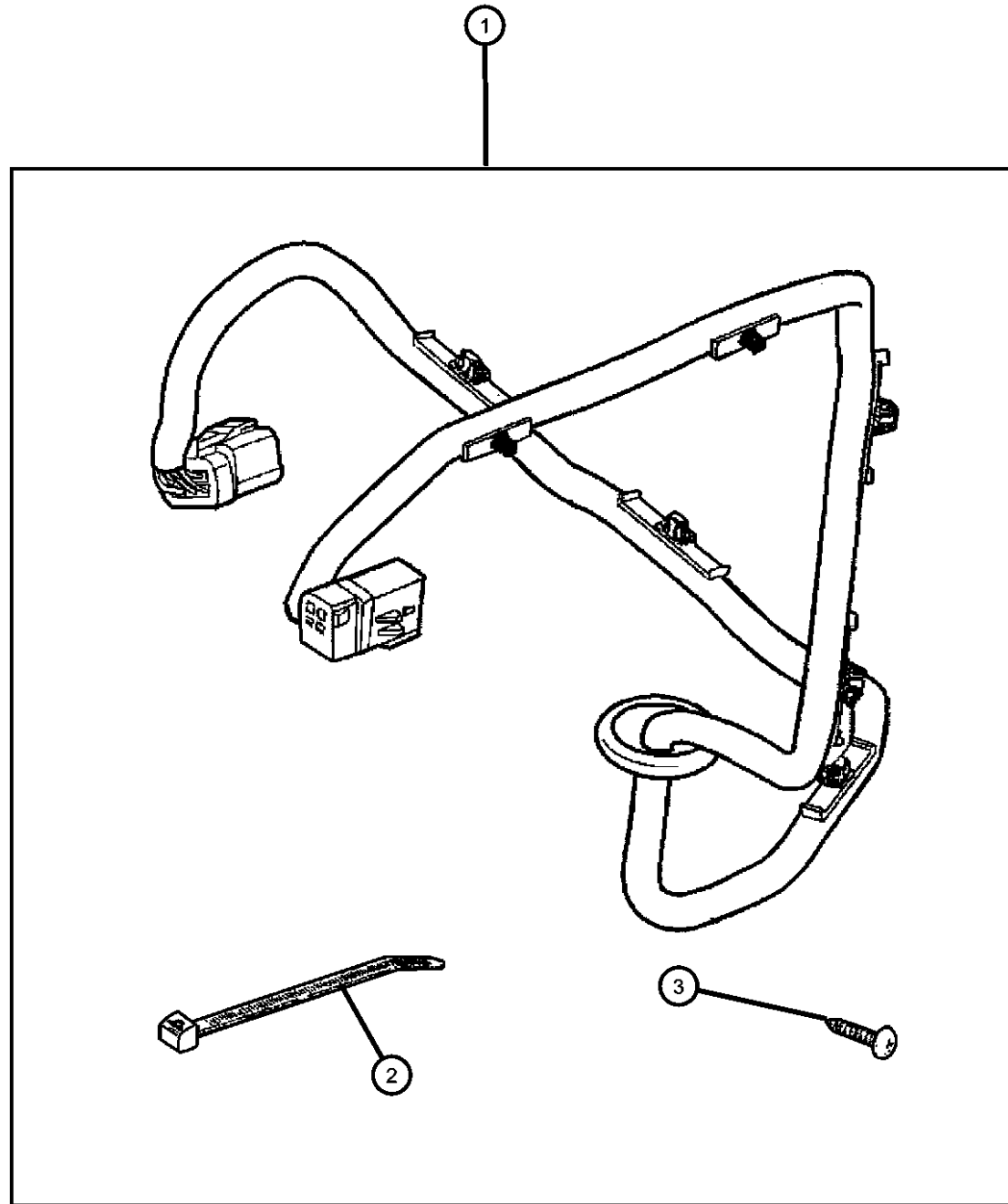
2001 AN

**Wiring Kit - Trailer Tow - 7 Way
Figure 1-240**

ITEM	PART NUMBER	QTY	LINE	SERIES	BODY	ENGINE	TRANS	TRIM	DESCRIPTION
------	-------------	-----	------	--------	------	--------	-------	------	-------------

NOTE: Will not fit Chassis Cab. Built in Running Light Relay.

1	82204724	1							WIRING KIT, Trailer Tow - 7 Way
2	06015756	1							STRAP, Tie
3	00154633	4							SCREW, .164-18x.625



DAKOTA (AN)

SERIES	LINE
L = Dakota (All)	1 = Lt. Duty DODGE 2WD 5 = Lt. Duty DODGE 4WD

BODY
31 = CLUB CAB 2-DR (131 WB)
84 = CREW CAB 4-DR (131 WB)
61 = REG CAB (112 WB)

ENGINE
EHC = ENGINE - "MAGNUM" 3.9L SMPI V6
EML = ENGINE - 5.9L V8 MPI
EPE = ENGINE - 2.5L POWER TECH I-4 Cyl.
EVA = ENGINE- 4.7L V8 MPI

TRANSMISSION
DDK = TRANSMISSION - 5-SPEED HD MANUAL
DG4 = TRANSMISSION-MULTI-SPEED AUTO, 45RFE
DGK = TRANSMISSION - 4-SPD. AUTOMATIC,42RE
DDC = TRANSMISSION - 5-SPEED HD MANUAL
DGQ = TRANSMISSION-5SPD AUTOMATIC 5-45RFE
DGT = TRANSMISSION - 4-SPD. AUTOMATIC,46RE
DBB = ALL MANUAL TRANSMISSIONS
DG0 = TRANSMISSIONS - ALL AUTOMATIC

AR = use ase required - = Non illustrated part

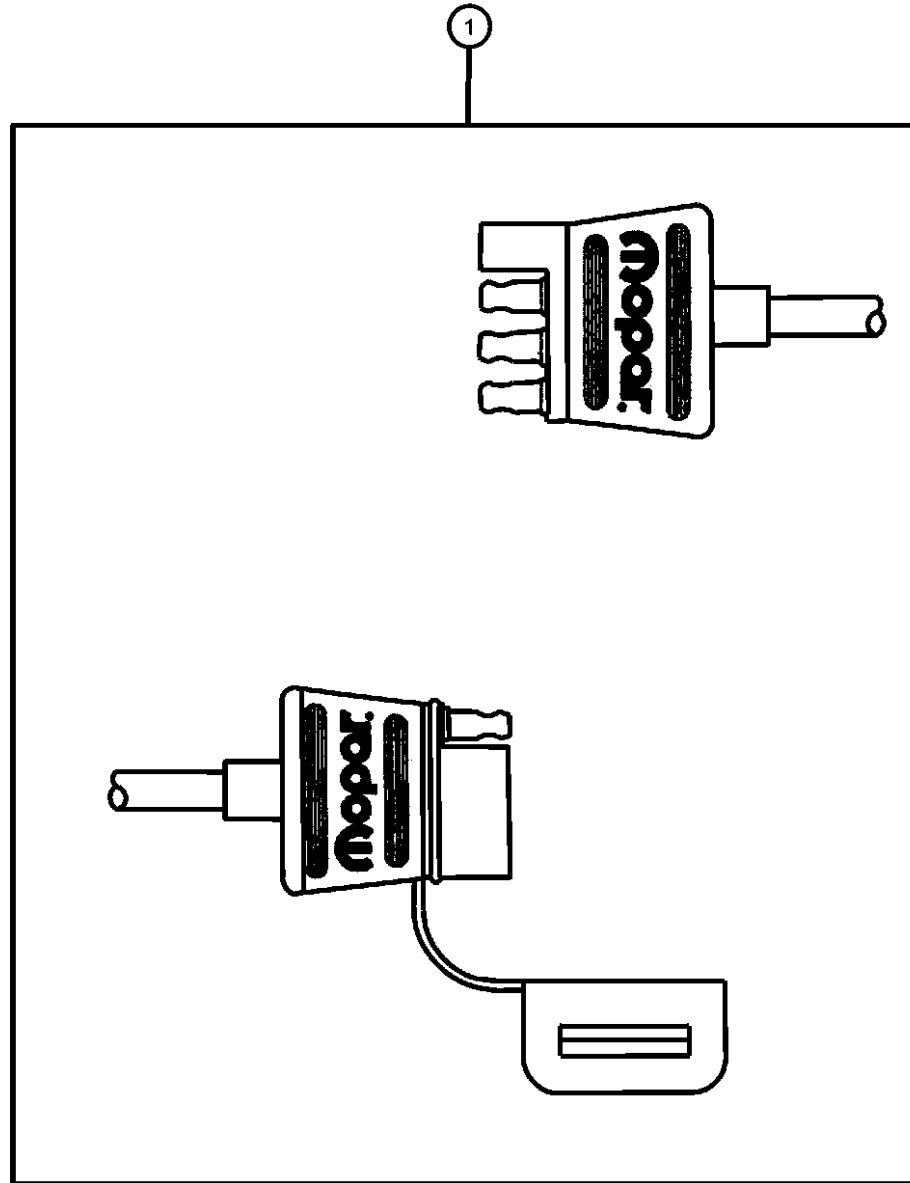
2001 AN

Wiring Kit - Trailer Tow - 4 Way
Figure 1-242

ITEM	PART NUMBER	QTY	LINE	SERIES	BODY	ENGINE	TRANS	TRIM	DESCRIPTION
------	-------------	-----	------	--------	------	--------	-------	------	-------------

NOTE;
Molded cap with Mopar Logo.

1	82204641	1	1, 5		31, 61, 84				WIRING KIT, Trailer Tow, Four Way Flat
---	----------	---	------	--	------------	--	--	--	----------------------------------------



DAKOTA (AN)

SERIES	LINE
L = Dakota (All)	1 = Lt. Duty DODGE 2WD 5 = Lt. Duty DODGE 4WD

BODY
31 = CLUB CAB 2-DR (131 WB)
84 = CREW CAB 4-DR (131 WB)
61 = REG CAB (112 WB)

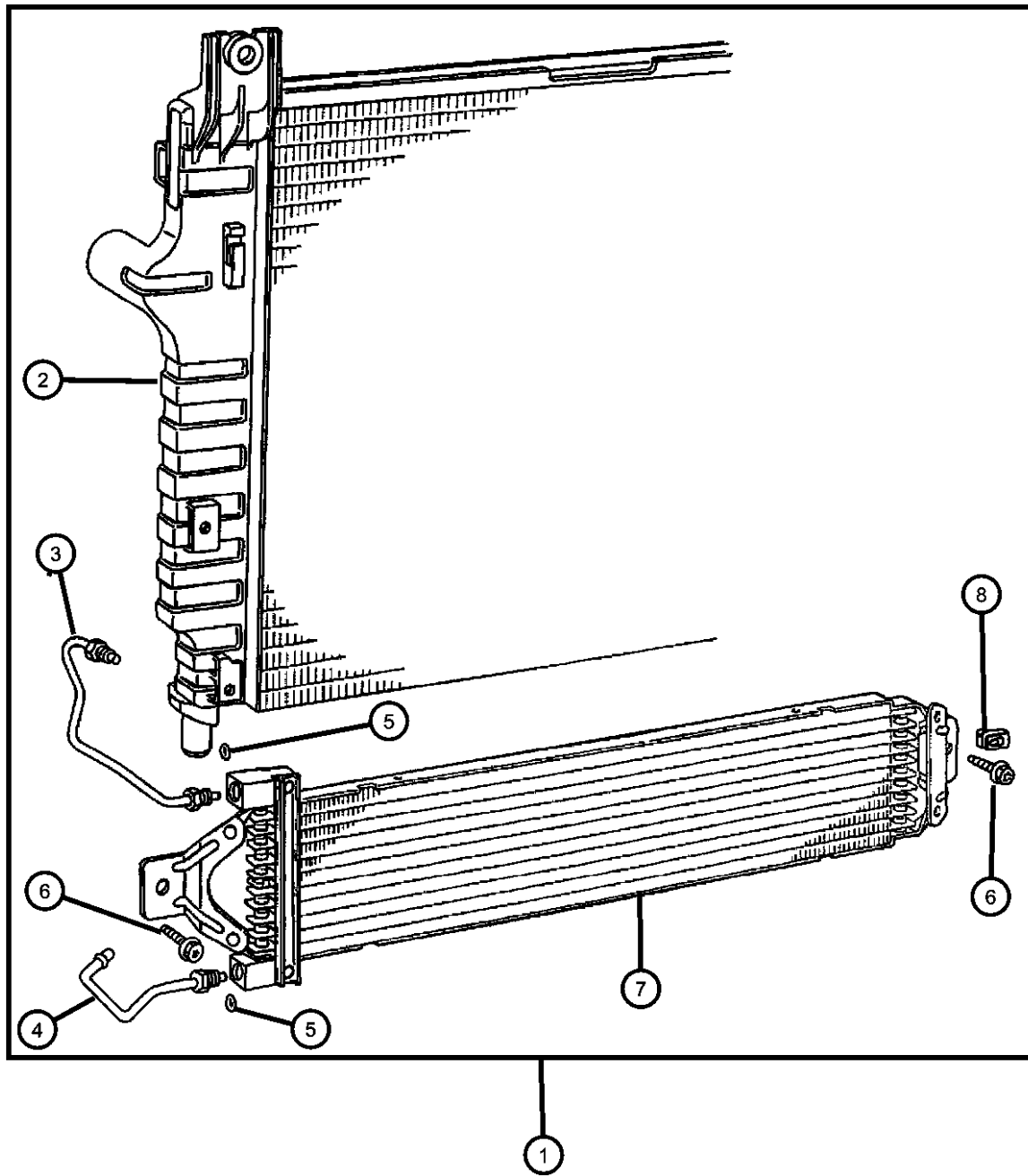
ENGINE
EHC = ENGINE - "MAGNUM" 3.9L SMPI V6
EML = ENGINE - 5.9L V8 MPI
EPE = ENGINE - 2.5L POWER TECH I-4 Cyl.
EVA = ENGINE- 4.7L V8 MPI

TRANSMISSION
DDK = TRANSMISSION - 5-SPEED HD MANUAL
DG4 = TRANSMISSION-MULTI-SPEED AUTO, 45RFE
DGK = TRANSMISSION - 4-SPD. AUTOMATIC,42RE
DDC = TRANSMISSION - 5-SPEED HD MANUAL
DGQ = TRANSMISSION-5SPD AUTOMATIC 5-45RFE
DGT = TRANSMISSION - 4-SPD. AUTOMATIC,46RE
DBB = ALL MANUAL TRANSMISSIONS
DG0 = TRANSMISSIONS - ALL AUTOMATIC

AR = use ase required - = Non illustrated part

2001 AN

Cooler Kit - Transmission Oil
Figure 1-250



ITEM	PART NUMBER	QTY	LINE	SERIES	BODY	ENGINE	TRANS	TRIM	DESCRIPTION
1									COOLER PACKAGE, Transmission Oil
	82205677	1	1, 5		31, 61, 84				3.9L V6
	82205678	1	1, 5		31, 61, 84				4.7L and 5.9L V8
2									RADIATOR, Engine Cooling
	52028816AC	1							3.9L V6
	05066386AA								Mopar Coolant 5 Year/100,000 Mile Formula 1 Gallon
	52028818AC	1							4.7L and 5.9L V8
	05066386AA								Mopar Coolant 5 Year/100,000 Mile Formula 1 Gallon
3	05015415AA	1	1, 5		31, 61, 84				TUBE, Oil Cooler, Upper
4	05015416AA	1	1, 5		31, 61, 84				TUBE, Oil Cooler, Lower
5	05016144AA	2							SEAL, O-Ring
6	04734274	2							SCREW, Decking Bracket
7	52028779AB	1	1, 5		31, 61, 84				COOLER, Auxiliary Oil
8	52028779AB	1							U-NUT, M6x1.00, (NOT SERVICED)

DAKOTA (AN)

SERIES LINE
 L = Dakota (All) 1 = Lt. Duty DODGE 2WD
 5 = Lt. Duty DODGE 4WD

BODY
 31 = CLUB CAB 2-DR (131 WB)
 84 = CREW CAB 4-DR (131 WB)
 61 = REG CAB (112 WB)

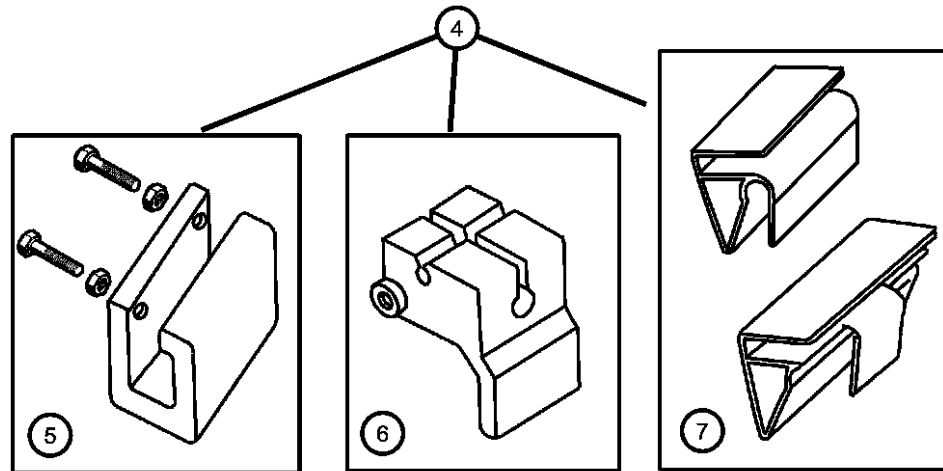
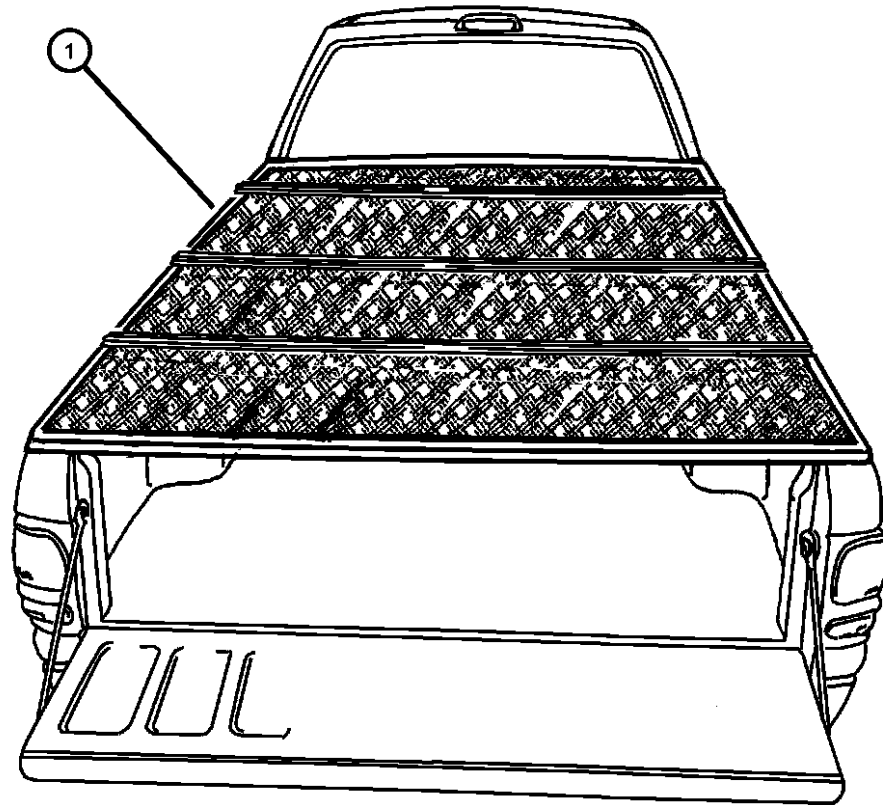
ENGINE
 EHC = ENGINE - "MAGNUM" 3.9L SMPI V6
 EML = ENGINE - 5.9L V8 MPI
 EPE = ENGINE - 2.5L POWER TECH I-4 Cyl.
 EVA = ENGINE- 4.7L V8 MPI

TRANSMISSION
 DDK = TRANSMISSION - 5-SPEED HD MANUAL
 DG4 = TRANSMISSION-MULTI-SPEED AUTO, 45RFE
 DGK = TRANSMISSION - 4-SPD. AUTOMATIC, 42RE
 DDC = TRANSMISSION - 5-SPEED HD MANUAL
 DGQ = TRANSMISSION-5SPD AUTOMATIC 5-45RFE
 DGT = TRANSMISSION - 4-SPD. AUTOMATIC, 46RE
 DBB = ALL MANUAL TRANSMISSIONS
 DG0 = TRANSMISSIONS - ALL AUTOMATIC

AR = use ase required - = Non illustrated part

Cover Kit - Folding
Figure 1-270

ITEM	PART NUMBER	QTY	LINE	SERIES	BODY	ENGINE	TRANS	TRIM	DESCRIPTION
NOTE: 82202727 requires hardware kit for installation.									
1									COVER KIT, Tonneau-Folding
	82202727	1	1, 5		31, 61				6.5 Foot Bed
	82205224	1	1, 5		84				5.25 Foot Bed Includes hardware.
-2									LOCK KIT, Folding-tonneau
	05018118AA	1	1, 5		31, 61				
		1	1, 5		84				
-3									KEY, Master
	05018386AA	1	1, 5		31, 61				
		1	1, 5		84				
4	82203246	1	1, 5		31, 61				HARDWARE KIT, Tonneau - Folding
5	05071483AA	1	1, 5		31, 61				CLAMP, Cover
6	05071489AA	1	1, 5		31, 61				BRACKET, Tonneau
7	05071487AA	1	1, 5		31, 61				BRACKET, Tonneau



DAKOTA (AN)

SERIES LINE
L = Dakota (All) 1 = Lt. Duty DODGE 2WD
5 = Lt. Duty DODGE 4WD

BODY

31 = CLUB CAB 2-DR (131 WB)
84 = CREW CAB 4-DR (131 WB)
61 = REG CAB (112 WB)

ENGINE

EHC = ENGINE - "MAGNUM" 3.9L SMPI V6
EML = ENGINE - 5.9L V8 MPI
EPE = ENGINE - 2.5L POWER TECH I-4 Cyl.
EVA = ENGINE- 4.7L V8 MPI

TRANSMISSION

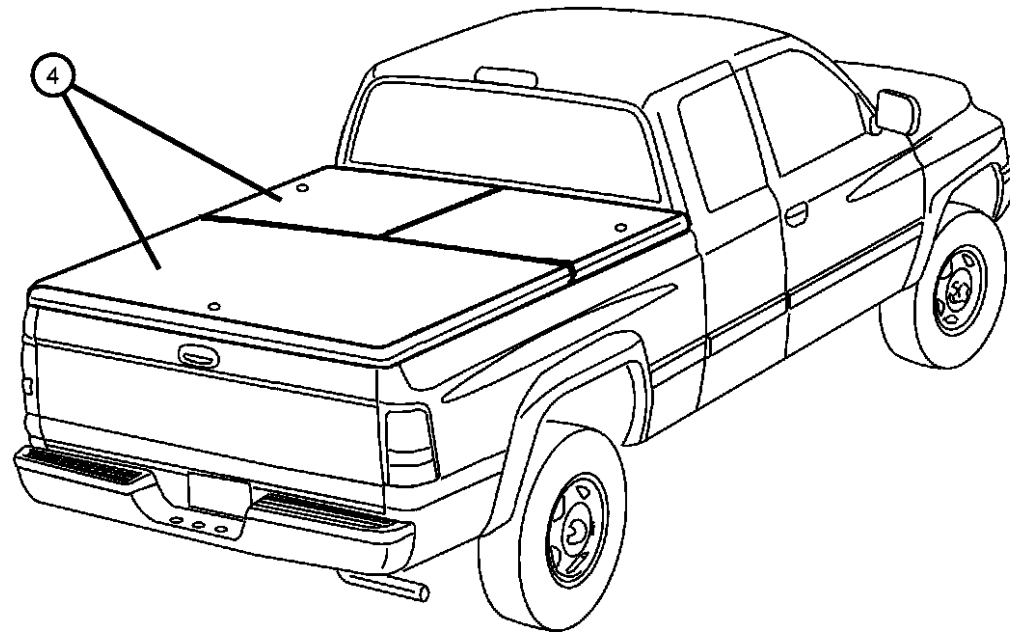
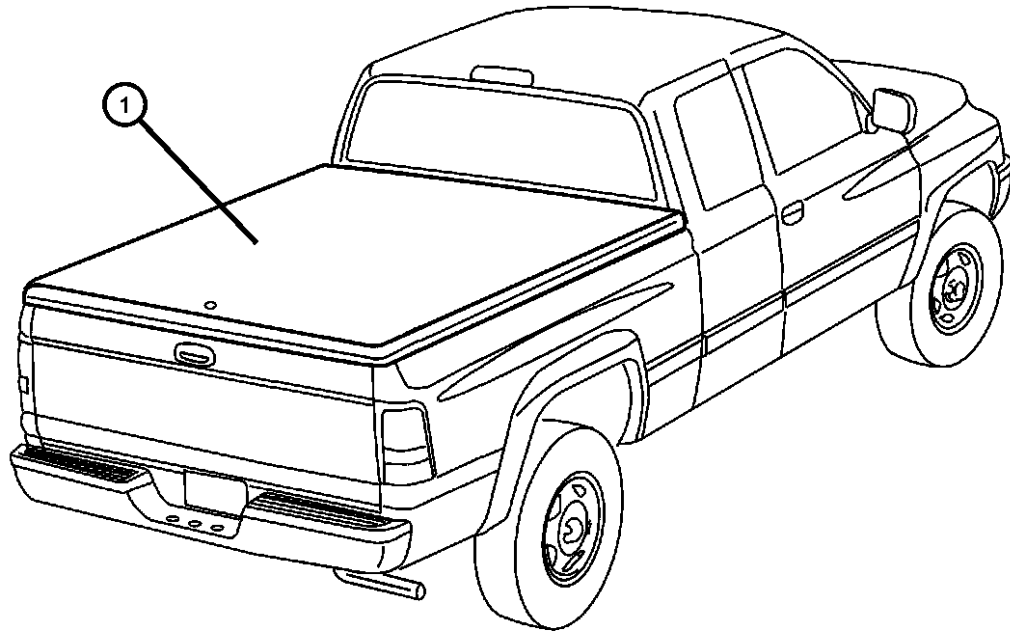
DDK = TRANSMISSION - 5-SPEED HD MANUAL
DG4 = TRANSMISSION-MULTI-SPEED AUTO, 45RFE
DGK = TRANSMISSION - 4-SPD. AUTOMATIC, 42RE
DDC = TRANSMISSION - 5-SPEED HD MANUAL
DGQ = TRANSMISSION-5SPD AUTOMATIC 5-45RFE
DGT = TRANSMISSION - 4-SPD. AUTOMATIC, 46RE
DBB = ALL MANUAL TRANSMISSIONS
DGO = TRANSMISSIONS - ALL AUTOMATIC

AR = use ase required - = Non illustrated part

2001 AN

**Cover Kit - Tonneau
Figure 1-280**

ITEM	PART NUMBER	QTY	LINE	SERIES	BODY	ENGINE	TRANS	TRIM	DESCRIPTION
-6	05018117AA	1			84				LOCK KIT, Hard-tonneau
-7	05018343AA	1			84				KEY, Master



DAKOTA (AN)

SERIES LINE
L = Dakota (All) 1 = Lt. Duty DODGE 2WD
5 = Lt. Duty DODGE 4WD

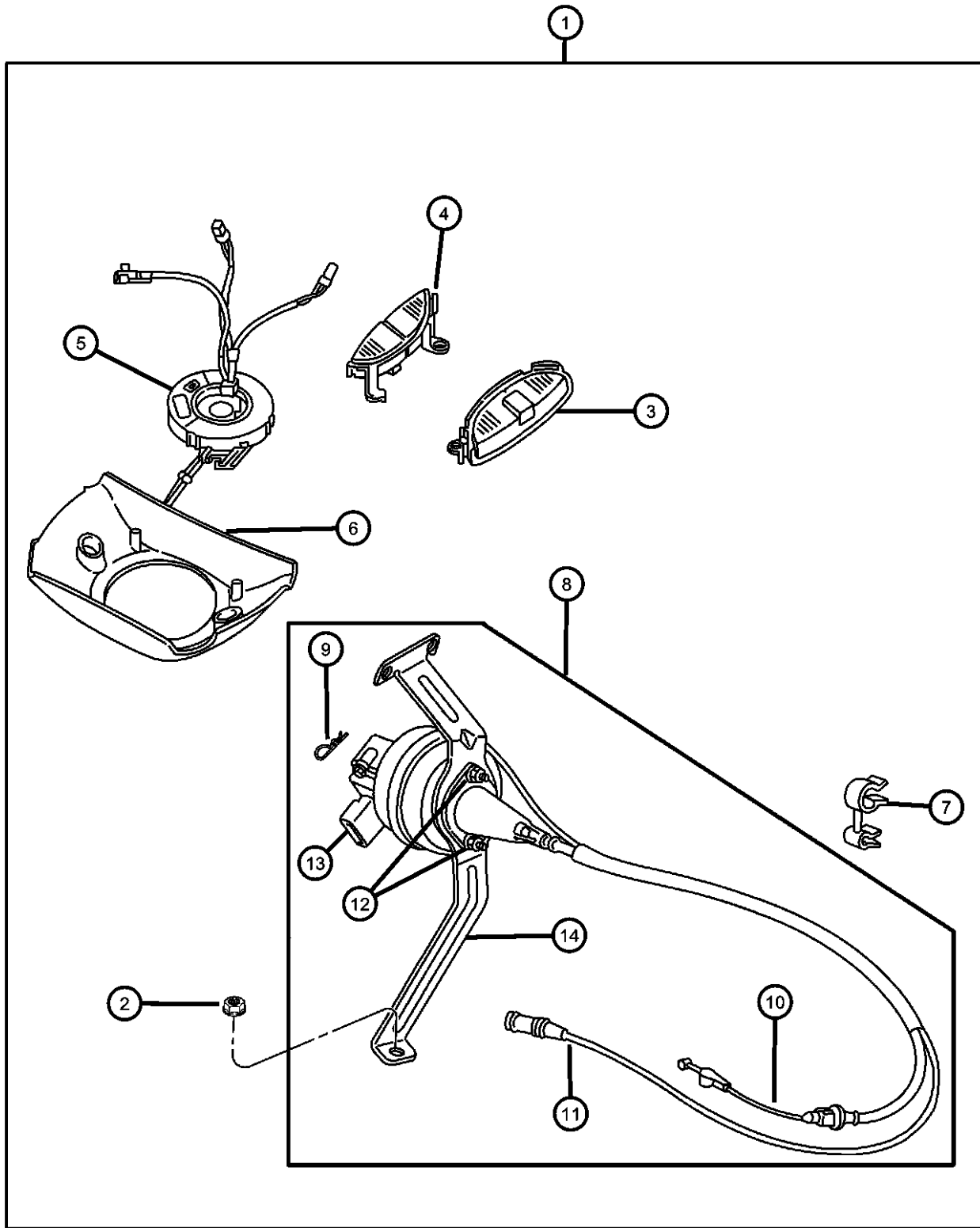
BODY
31 = CLUB CAB 2-DR (131 WB)
84 = CREW CAB 4-DR (131 WB)
61 = REG CAB (112 WB)

ENGINE
EHC = ENGINE - "MAGNUM" 3.9L SMPI V6
EML = ENGINE - 5.9L V8 MPI
EPE = ENGINE - 2.5L POWER TECH I-4 Cyl.
EVA = ENGINE- 4.7L V8 MPI

TRANSMISSION
DDK = TRANSMISSION - 5-SPEED HD MANUAL
DG4 = TRANSMISSION-MULTI-SPEED AUTO, 45RFE
DGG = TRANSMISSION - 4-SPD. AUTOMATIC,42RE
DDC = TRANSMISSION - 5-SPEED HD MANUAL
DGQ = TRANSMISSION-5SPD AUTOMATIC 5-45RFE
DGT = TRANSMISSION - 4-SPD. AUTOMATIC,46RE
DBB = ALL MANUAL TRANSMISSIONS
DGO = TRANSMISSIONS - ALL AUTOMATIC

AR = use ase required - = Non illustrated part

Control Package - Speed
Figure 1-310



ITEM	PART NUMBER	QTY	LINE	SERIES	BODY	ENGINE	TRANS	TRIM	DESCRIPTION
1									CONTROL PACKAGE, Speed Control
	82206969	1	1, 5		31, 61, 84				3.9L V6
	82206970	1	1, 5		31, 61, 84				4.7L V8
	82206971	1	1, 5		31, 61, 84				5.9L V8
2	82206971	1							NUT AND WASHER, M6x1.00, (NOT SERVICED),
3	56021332AB	1	1, 5		31, 61, 84				SWITCH, Speed ControlRight
4	56021333AB	1	1, 5		31, 61, 84				SWITCH, Speed ControlLeft
5	56045403AC	1							CLOCKSPRING
6	04897002AA	1	1, 5		31, 61, 84				SHROUD, Steering Column
7									CLIP, Cruise Control
	06506545AA	1							4.7L V8
	53031995AA	1	1, 5		31, 61, 84				3.9L V6
8	53031995AA	1							CONTROL, Speed, Service Component Parts, (NOT SERVICED),
9	06025867	1							CLIP, Cable to Servo Attach
10									CABLE, Speed Control
	05015853AA	1							5.9L V8
	05015856AA	1							3.9L V6
	05015857AB	1							4.7L V8
11									HARNESS, Speed Control Vacuum
	05015845AA	1							5.9L V8
		1							3.9L V6
	05015846AA	1							4.7L V8
12	06500274	1							LOCK NUT, M6x1.0x6
13	04669977	1							SERVO, Speed Control
14	05015843AA	1							BRACKET, Cruise Control Servo

DAKOTA (AN)

SERIES LINE
L = Dakota (All) 1 = Lt. Duty DODGE 2WD
5 = Lt. Duty DODGE 4WD

BODY

31 = CLUB CAB 2-DR (131 WB)
84 = CREW CAB 4-DR (131 WB)
61 = REG CAB (112 WB)

ENGINE

EHC = ENGINE - "MAGNUM" 3.9L SMPI V6
EML = ENGINE - 5.9L V8 MPI
EPE = ENGINE - 2.5L POWER TECH I-4 Cyl.
EVA = ENGINE- 4.7L V8 MPI

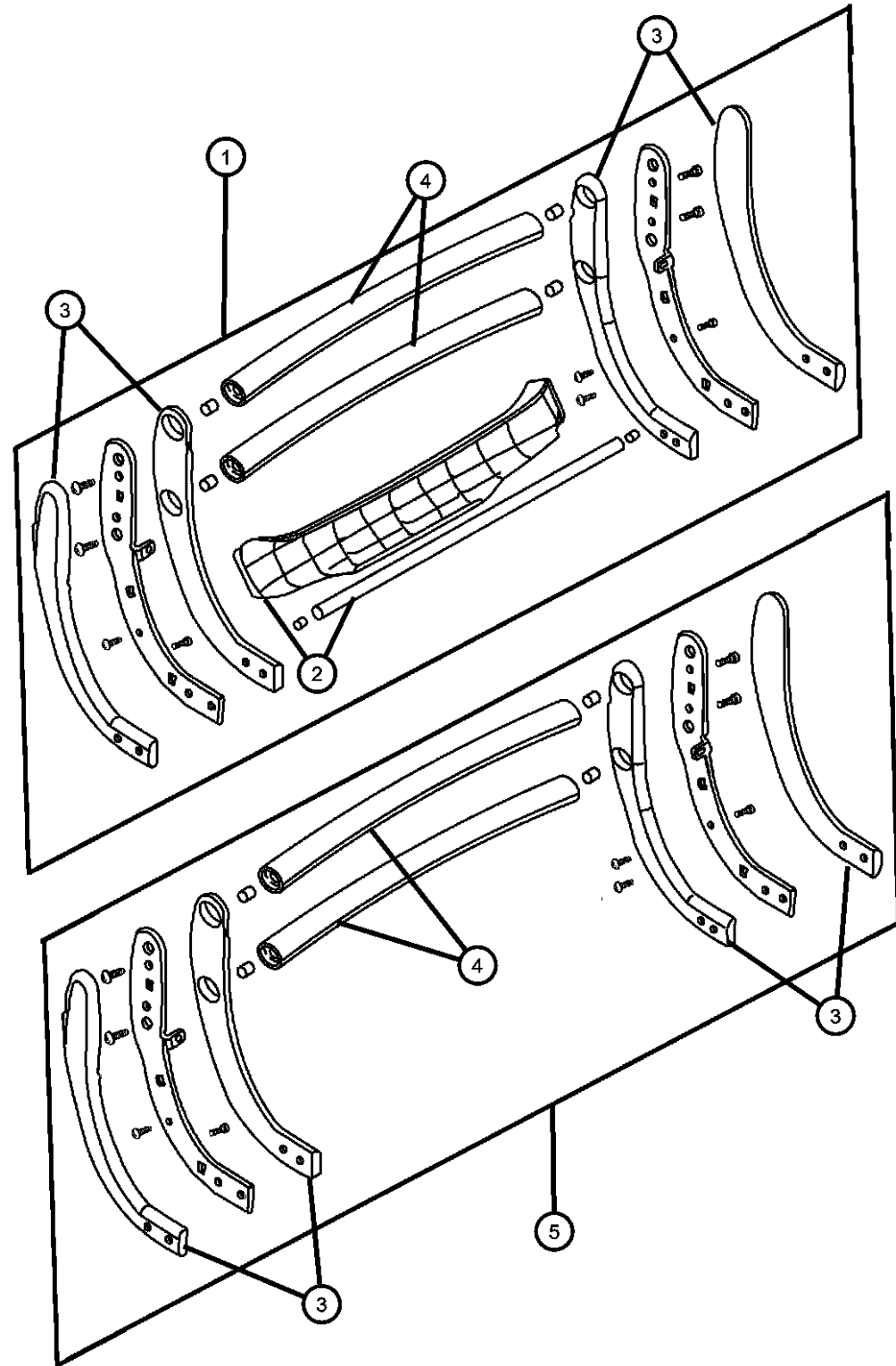
TRANSMISSION

DDK = TRANSMISSION - 5-SPEED HD MANUAL
DG4 = TRANSMISSION-MULTI-SPEED AUTO, 45RFE
DGK = TRANSMISSION - 4-SPD. AUTOMATIC,42RE
DDC = TRANSMISSION - 5-SPEED HD MANUAL
DGQ = TRANSMISSION-5SPD AUTOMATIC 5-45RFE
DGT = TRANSMISSION - 4-SPD. AUTOMATIC,46RE
DBB = ALL MANUAL TRANSMISSIONS
DGO = TRANSMISSIONS - ALL AUTOMATIC

AR = use ase required - = Non illustrated part

2001 AN

**Grill Guard
Figure 1-422**



ITEM	PART NUMBER	QTY	LINE	SERIES	BODY	ENGINE	TRANS	TRIM	DESCRIPTION
1	82206478	1	1, 5		31, 61, 84				GUARD KIT, Grille, with Fascia, Black
2	05018425AA	1	1, 5		31, 61, 84				FASCIA, Front, Primed, Primed
3									END CAP, Grille Guard
	05018328AA	1	1, 5		31, 61, 84				Primed, Right
	05018329AA	1	1, 5		31, 61, 84				Primed, Left
4									CROSSTUBE, Grille Guard
	05018326AA	1	1, 5		31, 61, 84				Package of Two, Primed
	05018438AA	1	1, 5		31, 61, 84				Package of Two, Chrome
5									GUARD KIT, Grille, Without Fascia
	82206479	1	1, 5		31, 61, 84				Black
	82206480	1	1, 5		31, 61, 84				Chrome

DAKOTA (AN)

SERIES LINE
L = Dakota (All) 1 = Lt. Duty DODGE 2WD
5 = Lt. Duty DODGE 4WD

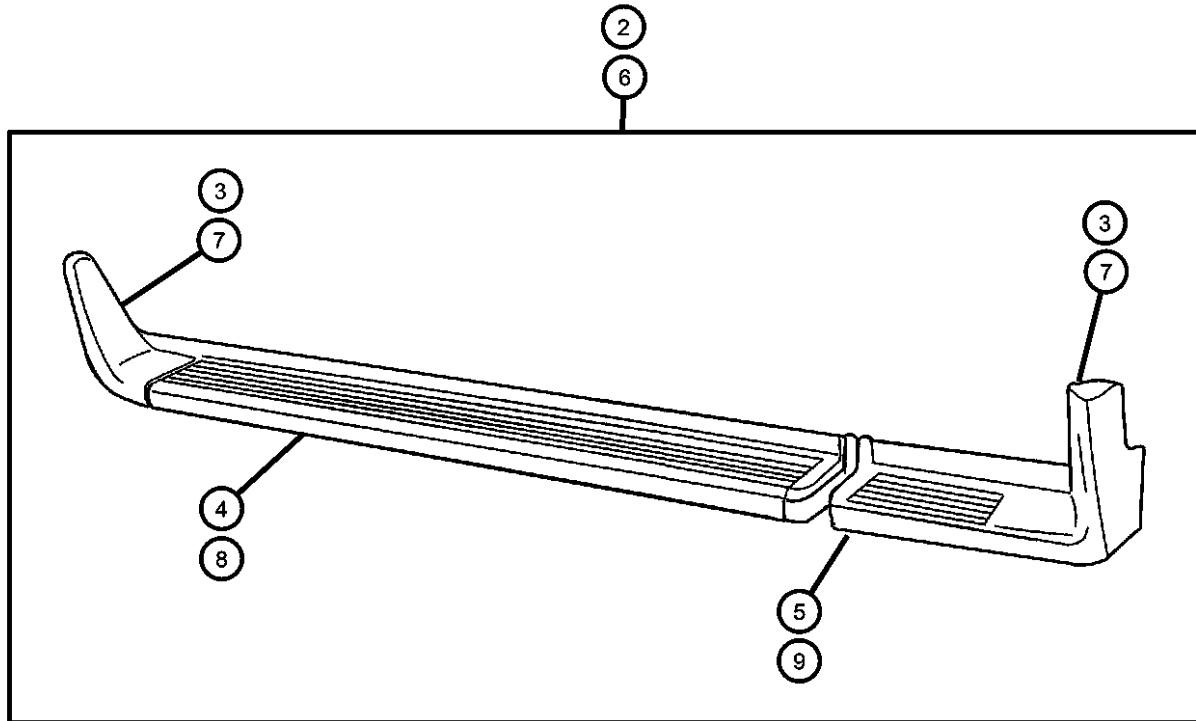
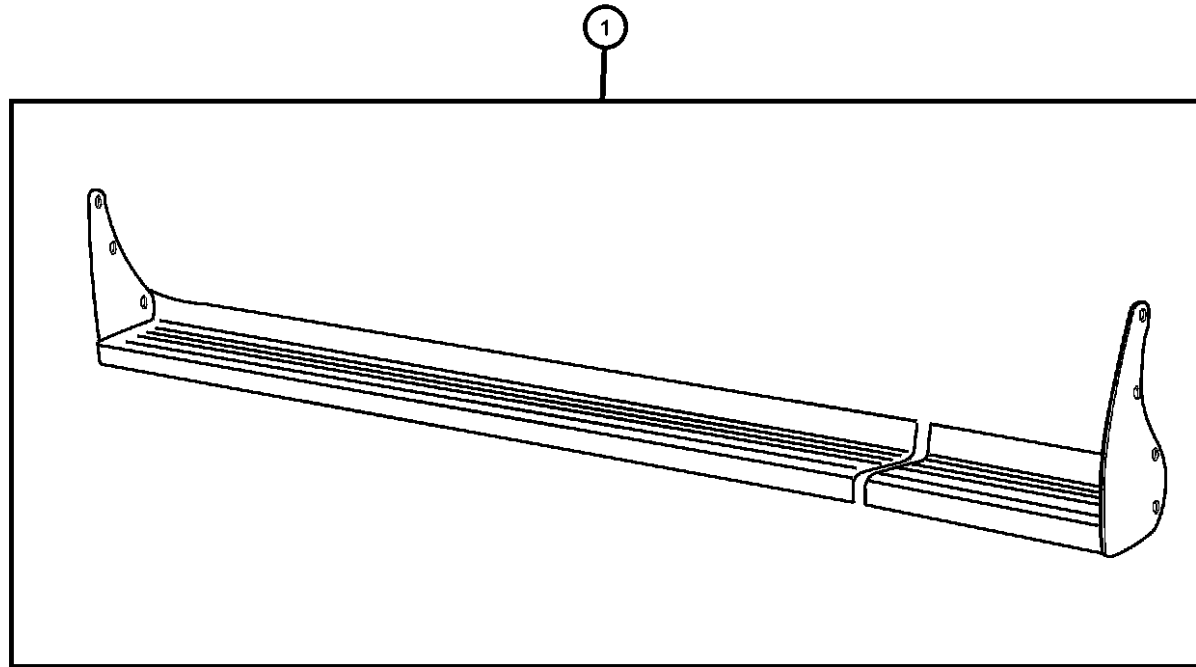
BODY
31 = CLUB CAB 2-DR (131 WB)
84 = CREW CAB 4-DR (131 WB)
61 = REG CAB (112 WB)

ENGINE
EHC = ENGINE - "MAGNUM" 3.9L SMPI V6
EML = ENGINE - 5.9L V8 MPI
EPE = ENGINE - 2.5L POWER TECH I-4 Cyl.
EVA = ENGINE- 4.7L V8 MPI

TRANSMISSION
DDK = TRANSMISSION - 5-SPEED HD MANUAL
DG4 = TRANSMISSION-MULTI-SPEED AUTO, 45RFE
DGK = TRANSMISSION - 4-SPD. AUTOMATIC, 42RE
DDC = TRANSMISSION - 5-SPEED HD MANUAL
DGQ = TRANSMISSION-5SPD AUTOMATIC 5-45RFE
DGT = TRANSMISSION - 4-SPD. AUTOMATIC, 46RE
DBB = ALL MANUAL TRANSMISSIONS
DGO = TRANSMISSIONS - ALL AUTOMATIC

AR = use ase required - = Non illustrated part

**Running Board
Figure 1-430**



ITEM	PART NUMBER	QTY	LINE	SERIES	BODY	ENGINE	TRANS	TRIM	DESCRIPTION
------	-------------	-----	------	--------	------	--------	-------	------	-------------

NOTE:
Endcaps and Hardware are included in Running Board Kits
[P.A.R.] = Paint As Required

1	82202752	1	1, 5		31				RUNNING BOARD KIT, Full, Extruded, Club Cab, Bright Aluminum
2									RUNNING BOARD KIT, Full, Molded, Club Cab
	82202649	1	1, 5		31				Black
	82202654	1			31				Bright White
	82202669	1			31				Flame Red
	82204002	1	1, 5		31				Forest Green
	82204004	1	1, 5		31				Intense Blue
	82207038	1	1, 5		31				Amber Fire
	82207039	1	1, 5		31				Bright Silver
3	82207039	1							END CAP, Running Board, Serviced in package, (NOT SERVICED),
4									RUNNING BOARD, Club Cab, [P.A.R.]
	05017038AA	1	1, 5		31				Right
	05017039AA	1	1, 5		31				Left
5									RUNNING BOARD, 6.5 Foot box, [P.A.R.]
	05017040AA	1	1, 5		31				Right
	05017041AA	1	1, 5		31				Left
6									RUNNING BOARD KIT, Full, Molded, Standard Cab
	82202646	1	1, 5		61				Black
	82202651	1			61				Bright White
	82203999	1	1, 5		61				Forest Green
	82204001	1	1, 5		61				Intense Blue

DAKOTA (AN)

SERIES LINE
L = Dakota (All) 1 = Lt. Duty DODGE 2WD
5 = Lt. Duty DODGE 4WD

BODY
31 = CLUB CAB 2-DR (131 WB)
84 = CREW CAB 4-DR (131 WB)
61 = REG CAB (112 WB)

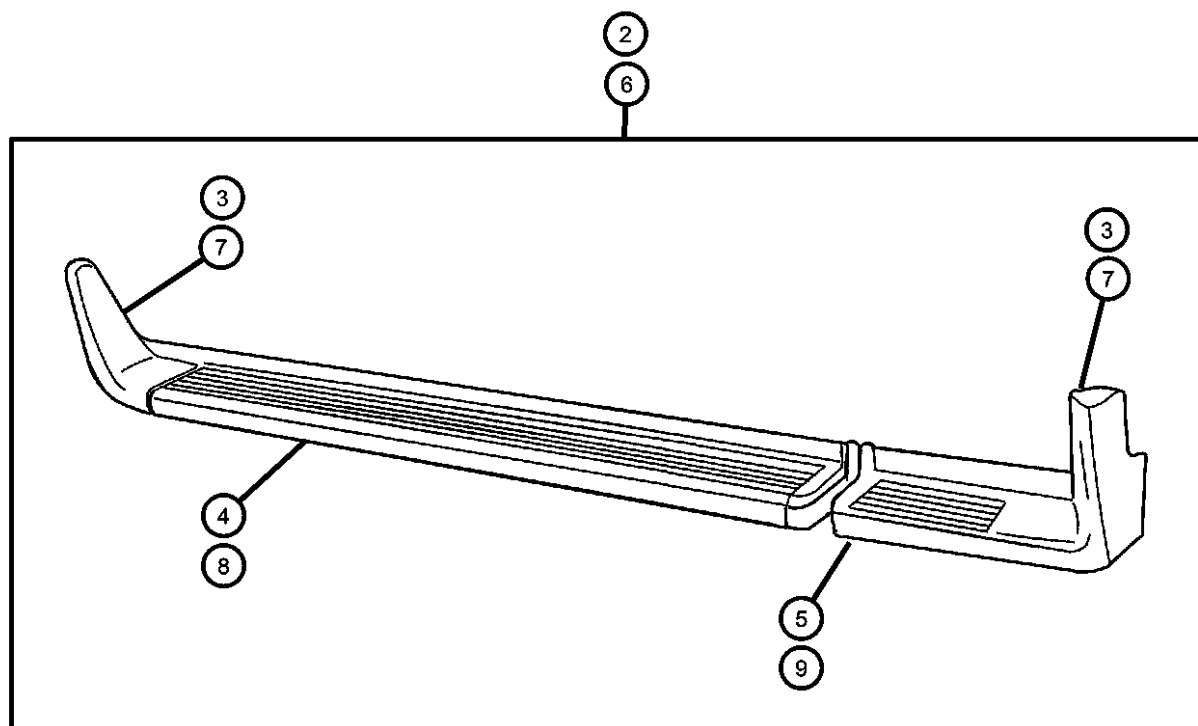
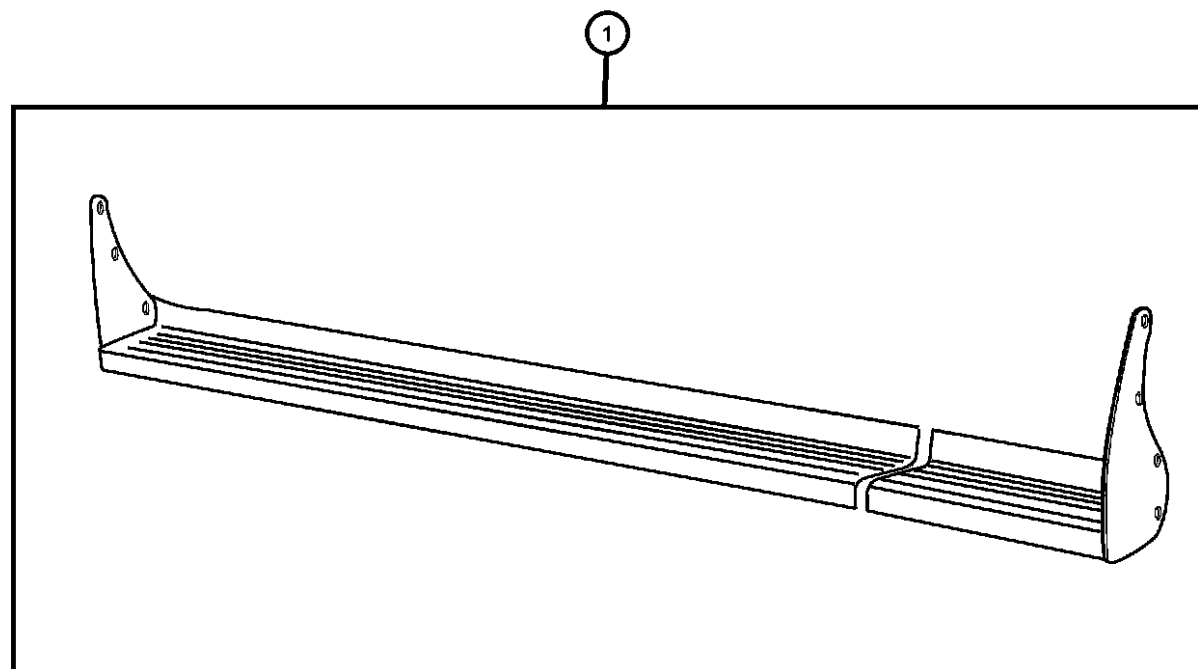
ENGINE
EHC = ENGINE - "MAGNUM" 3.9L SMPI V6
EML = ENGINE - 5.9L V8 MPI
EPE = ENGINE - 2.5L POWER TECH I-4 Cyl.
EVA = ENGINE- 4.7L V8 MPI

TRANSMISSION
DDK = TRANSMISSION - 5-SPEED HD MANUAL
DG4 = TRANSMISSION-MULTI-SPEED AUTO, 45RFE
DGK = TRANSMISSION - 4-SPD. AUTOMATIC, 42RE
DDC = TRANSMISSION - 5-SPEED HD MANUAL
DGQ = TRANSMISSION-5SPD AUTOMATIC 5-45RFE
DGT = TRANSMISSION - 4-SPD. AUTOMATIC, 46RE
DBB = ALL MANUAL TRANSMISSIONS
DG0 = TRANSMISSIONS - ALL AUTOMATIC

AR = use ase required - = Non illustrated part

2001 AN

Running Board
Figure 1-430



ITEM	PART NUMBER	QTY	LINE	SERIES	BODY	ENGINE	TRANS	TRIM	DESCRIPTION
	82207040	1	1, 5		61				Bright Silver
	82207041	1	1, 5		61				Amber Fire
7	82207041	1							END CAP, Running Board, Serviced in package, (NOT SERVICED),
8									RUNNING BOARD, Standard Cab, [P.A.R.]
	05017036AA	1	1, 5		61				Right
	05017037AA	1	1, 5		61				Left
9									RUNNING BOARD, 6.5 Foot box, [P.A.R.]
	05017040AA	1	1, 5		61				Right
	05017041AA	1	1, 5		61				Left

DAKOTA (AN)

SERIES LINE
L = Dakota (All) 1 = Lt. Duty DODGE 2WD
5 = Lt. Duty DODGE 4WD

BODY
31 = CLUB CAB 2-DR (131 WB)
84 = CREW CAB 4-DR (131 WB)
61 = REG CAB (112 WB)

ENGINE TRANSMISSION
EHC = ENGINE - "MAGNUM" 3.9L SMPI V6
EML = ENGINE - 5.9L V8 MPI
EPE = ENGINE - 2.5L POWER TECH I-4 Cyl.
EVA = ENGINE- 4.7L V8 MPI
DDK = TRANSMISSION - 5-SPEED HD MANUAL
DG4 = TRANSMISSION-MULTI-SPEED AUTO, 45RFE
DGK = TRANSMISSION - 4-SPD. AUTOMATIC,42RE
DDC = TRANSMISSION - 5-SPEED HD MANUAL
DGQ = TRANSMISSION-5SPD AUTOMATIC 5-45RFE
DGT = TRANSMISSION - 4-SPD. AUTOMATIC,46RE
DBB = ALL MANUAL TRANSMISSIONS
DG0 = TRANSMISSIONS - ALL AUTOMATIC

AR = use ase required - = Non illustrated part