

VIN PLATE DECODING INFORMATION

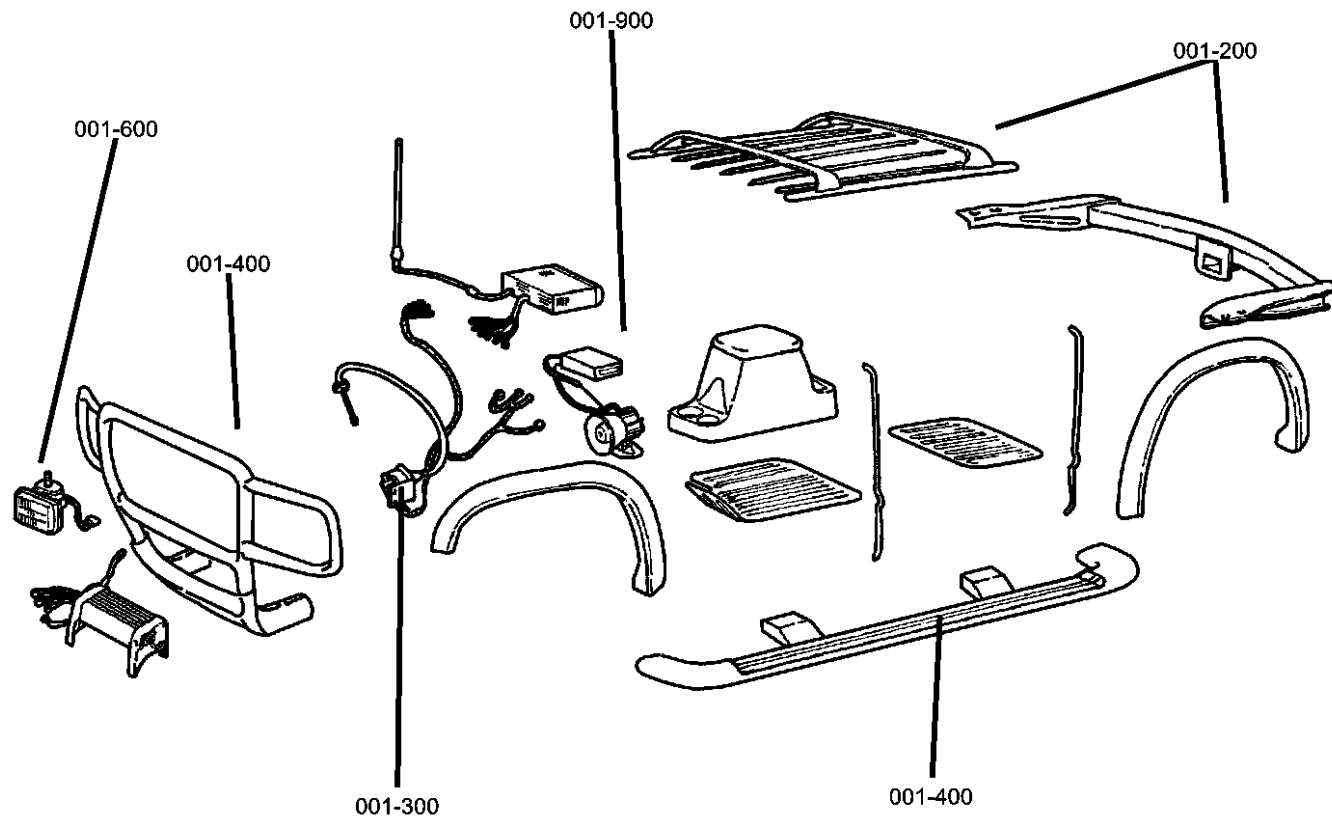
1	2	3	4	5	6	7	8	9	10	11	12 thru 17
Country	Make	Vehicle Type	Other	Line	Series	Body Style	Engine	Check Digit	Model Year	Assy. Plant	Sequence No.

The following table interprets the VIN Plate position shown above.

Position	Interpretation	Codes = Description
1	Country of Origin	1 = Built in U.S. by DaimlerChrysler
2	Assembler	C = Chrysler D = Dodge
3	Vehicle Type	3 = Passenger Car
4	GVWR & Pass. Safety	A = Restraint System Active Front and Side Air Bags
5	Vehicle Line	J = Chrysler, Cirrus (Mexico) (41) (27) L = Chrysler, Sebring (41) L = Dodge, Stratus (41) L = Chrysler, Sebring (27)
6	Series	4 = High Line 5 = Premium Line 6 = Sport Line X = Special (Mexico)
7	Body Style	2 = 2 Door Convertible - Open Body 6 = 4 Door Sedan
8	Engine	S = 2.4L 4 Cyl 16V DOHC Turbo (EDV) U = 2.7L V6 24V With Active Intake (EES) X = 2.4L 4 Cyl DOHC 16V (EDZ) Y = 2.0L 4 Cyl DOHC 16V (ECC)
9	Check Digit	0 = Check Digit 0 = Check Digit
10	Model Year	1 = 2001
11	Assembly Plant	N = Sterling Heights Assembly
12 thru 17	Vehicle Build Sequence	Model Year Assembly Sequence

Group - 1

Component Parts for Mopar Accessories



Group - 1 Component Parts for Mopar Accessories

Illustration Title

Group-Fig. No.

Carriers & Cargo Hauling

Bike Carrier - Hitch Mount	Fig. 1 - 210
Bike Carrier - Roof Mount	Fig. 1 - 212
Bike Carrier - Roof Mount	Fig. 1 - 214
Ski Carrier - Roof Mount	Fig. 1 - 220
Ski Carrier (Two Pair)	Fig. 1 - 222
Carrier Kit - Watersports	Fig. 1 - 232

Driving Convenience

Mounting Kit - Cellular Phone	Fig. 1 - 330
-------------------------------------	--------------

Exterior Appearance

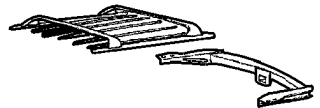

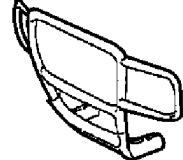


Wheel Kit	Fig. 1 - 410
-----------------	--------------

Fog Lights & Electrical

Heater Kit - Engine and Battery	Fig. 1 - 610
---------------------------------------	--------------

Security

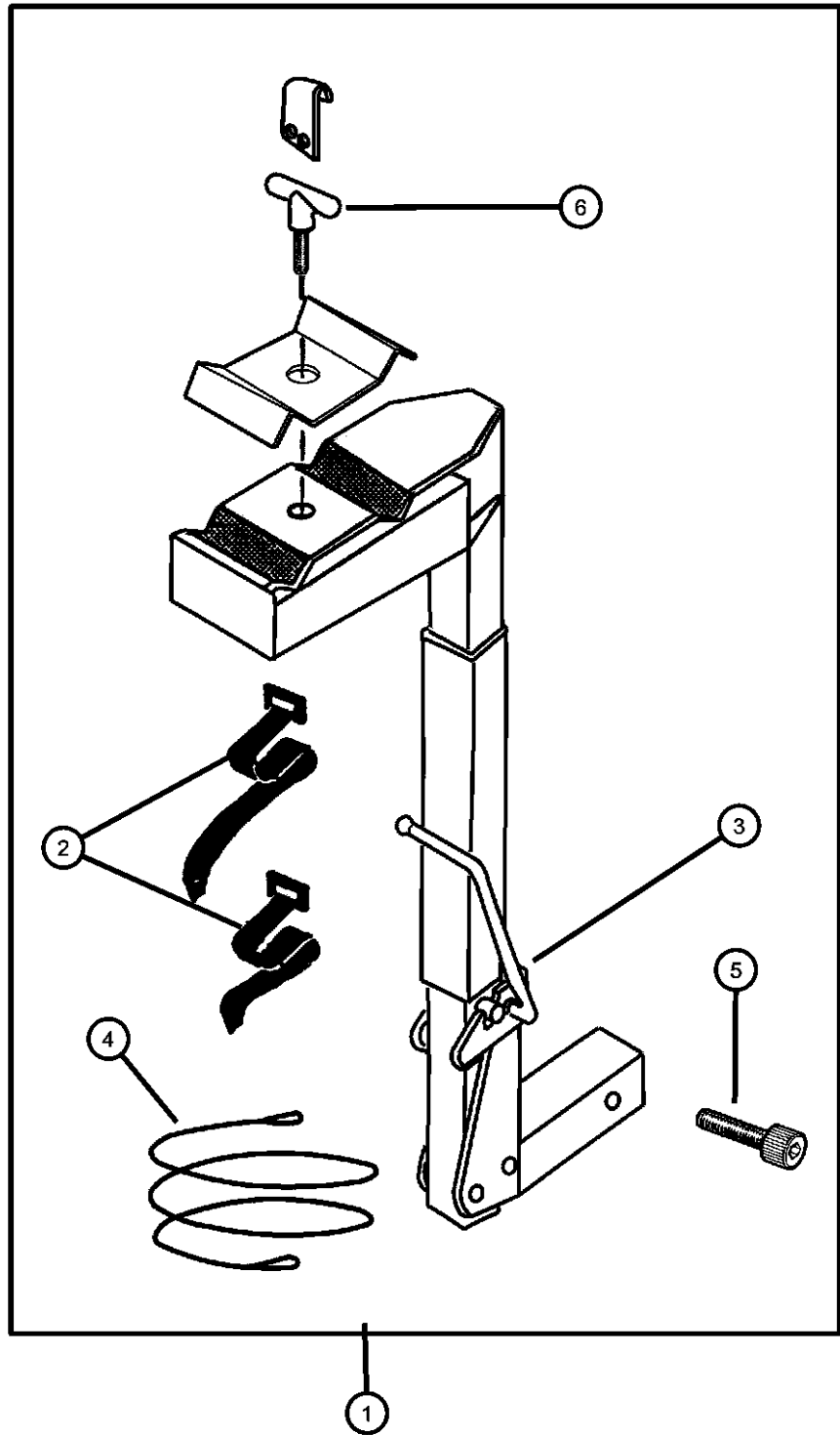
Alarm, EVS II	Fig. 1 - 910
Alarm EVS II	Fig. 1 - 912
Alarm EVS II	Fig. 1 - 914

<p>001-200 Carriers & Cargo Hauling</p> 	<p>001-300 Driving Convenience</p> 	<p>001-400 Exterior Appearance</p> 	<p>001-600 Fog Lights & Electrical</p> 
<p>001-900 Security</p> 			

Bike Carrier - Hitch Mount
Figure 1-210

ITEM	PART NUMBER	QTY	LINE	SERIES	BODY	ENGINE	TRANS	TRIM	DESCRIPTION
------	-------------	-----	------	--------	------	--------	-------	------	-------------

NOTE: Folds down for access to rear deck, has anti theft bolts.



1	82204452	1							CARRIER PACKAGE, Bike
2	04762880	1							STRAP KIT, Velcro, Contains: 1 Long and 1Short
3	05016775AA	1							STRAP KIT, Bike Carrier Latch, Contains: 2 Rubber Straps
4	04762882	1							LOCK KIT, Bike Carrier Handle
5	05016774AA	1							BOLT KIT, Security, Bike Carrier Handle
6	05016610AA	1							HARDWARE KIT, Accessory, T-Handle

SEBRING, STRATUS, CIRRUS, BREEZE (JR)

SERIES	LINE	BODY	ENGINE	TRANSMISSION
H = HIGHLINE	D = STRATUS, ES	27 = 2-DR CONVERTIBLE	EDZ = ENGINE - 2.4L 4 CYL DOHC 16V SMPI	DD5 = TRANSMISSION - 5-SPEED MANUAL
P = PREMIUM	D = R/T (MEXICO)	41 = 4 DOOR	ECC = ENGINE - 2.0L 4 CYL DOHC 16V SMPI	DGL = TRANSMISSION - 4-SPD. AUTOMATIC, 41TE
S = SPORT	C = SEBRING		EES = ENGINE - 2.7L V6 24V W/ACTIVE INTAKE	DGO = ALL AUTOMATIC
X = SPECIAL	C = CIRRUS (MEXICO)		EDV = Engine - 2.4L 4 Cyl DOHC 16V Turbo	DDO = ALL 5 SPEED MAUAL
			EEO = 2.7L V6 24V	
			ECO = ENGINES - ALL 2.0L 4 CYL	
			EDO = 2.4L 4 CYL 16V DOHCI	

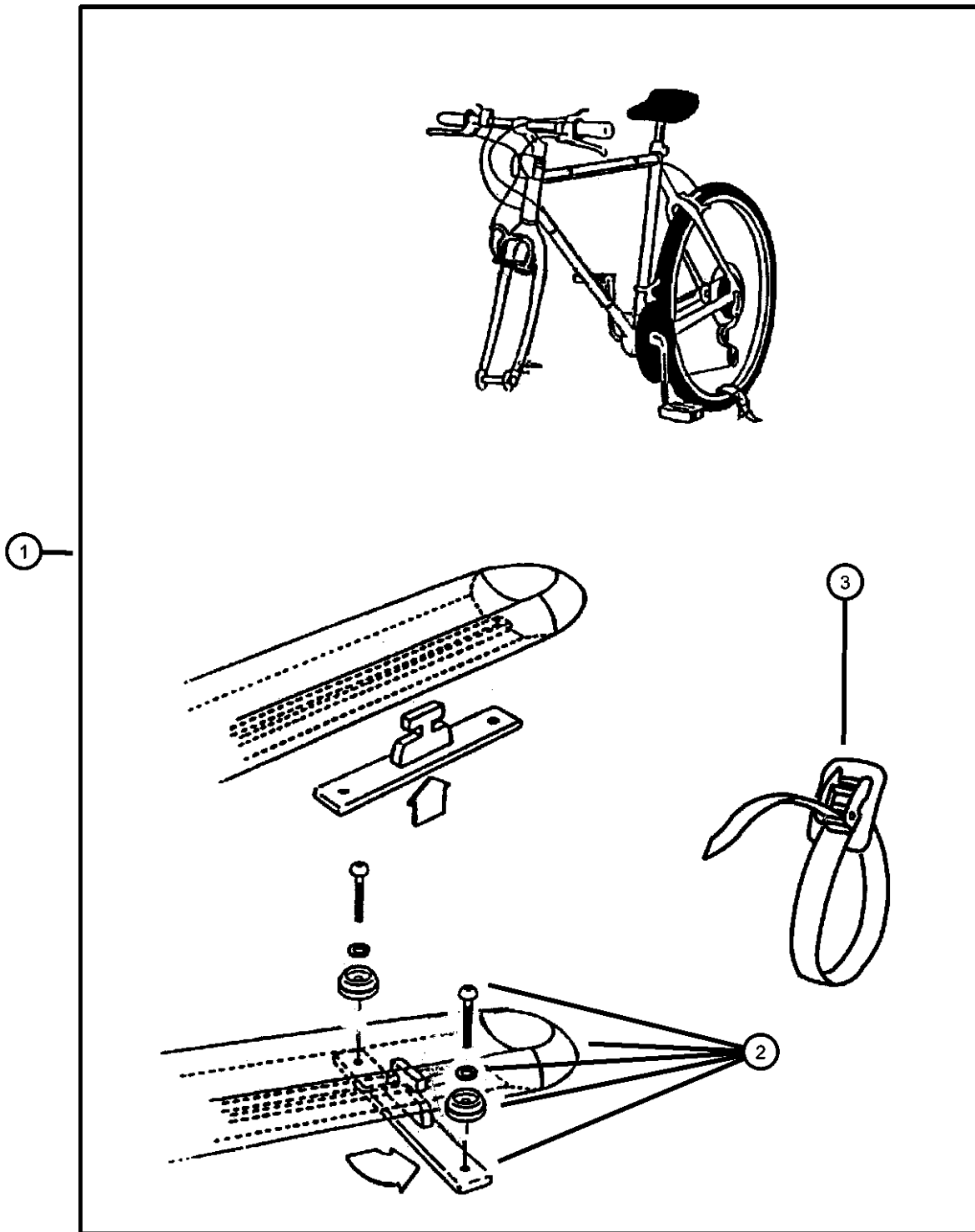
AR = use ase required - = Non illustrated part

Bike Carrier - Roof Mount
Figure 1-212

ITEM	PART NUMBER	QTY	LINE	SERIES	BODY	ENGINE	TRANS	TRIM	DESCRIPTION
------	-------------	-----	------	--------	------	--------	-------	------	-------------

NOTE: Hardware Kit also contained in Carrier Kit.

1	82300585	1			41				CARRIER KIT, Bike, Fork - Mount
2	05016512AA	1			41				HARDWARE KIT, Accessory, Consists of: 2-T-Slot Bars, 4-Round Dome Washers, 4-M6x1.00x16MM Machine Screws, 2-M6 Lockwashers
3	05016513AA	1			41				STRAP, Cargo Tie Down



SEBRING, STRATUS, CIRRUS, BREEZE (JR)

SERIES	LINE	BODY	ENGINE	TRANSMISSION
H = HIGHLINE	D = STRATUS, ES	27 = 2-DR CONVERTIBLE	EDZ = ENGINE - 2.4L 4 CYL DOHC 16V SMPI	DD5 = TRANSMISSION - 5-SPEED MANUAL
P = PREMIUM	D = R/T (MEXICO)	41 = 4 DOOR	ECC = ENGINE - 2.0L 4 CYL DOHC 16V SMPI	DGL = TRANSMISSION - 4-SPD. AUTOMATIC, 41TE
S = SPORT	C = SEBRING		EES = ENGINE - 2.7L V6 24V W/ACTIVE INTAKE	DGO = ALL AUTOMATIC
X = SPECIAL	C = CIRRUS (MEXICO)		EDV = Engine - 2.4L 4 Cyl DOHC 16V Turbo	DDO = ALL 5 SPEED MAUAL
			EEO = 2.7L V6 24V	
			ECO = ENGINES - ALL 2.0L 4 CYL	
			EDO = 2.4L 4 CYL 16V DOHCI	

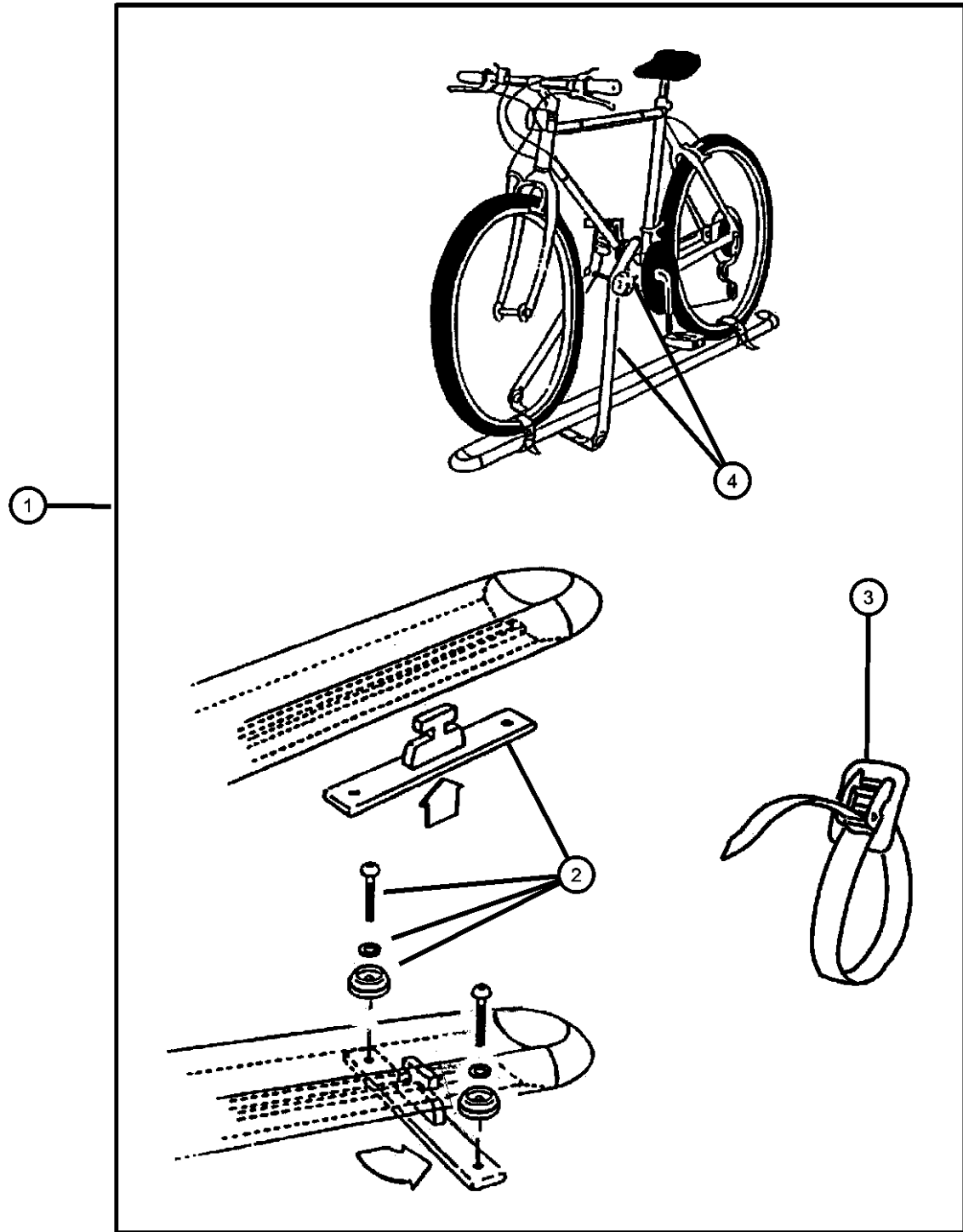
AR = use ase required - = Non illustrated part

Bike Carrier - Roof Mount
Figure 1-214

ITEM	PART NUMBER	QTY	LINE	SERIES	BODY	ENGINE	TRANS	TRIM	DESCRIPTION
------	-------------	-----	------	--------	------	--------	-------	------	-------------

NOTE: Kit has Upright Clamp for Bike.

1	82203471	1			41				CARRIER KIT, Bike, Upright - Mount
2	05016512AA	1			41				HARDWARE KIT, Accessory, Consists of: 2-T-Slot Bars, 4-Round Dome Washers, 4-M6x1.00x16MM Machine Screws, 2-M6 Lockwashers
3	05016513AA	1			41				STRAP, Cargo Tie Down
4	05018194AA	1			41				HARDWARE KIT, Bike Carrier



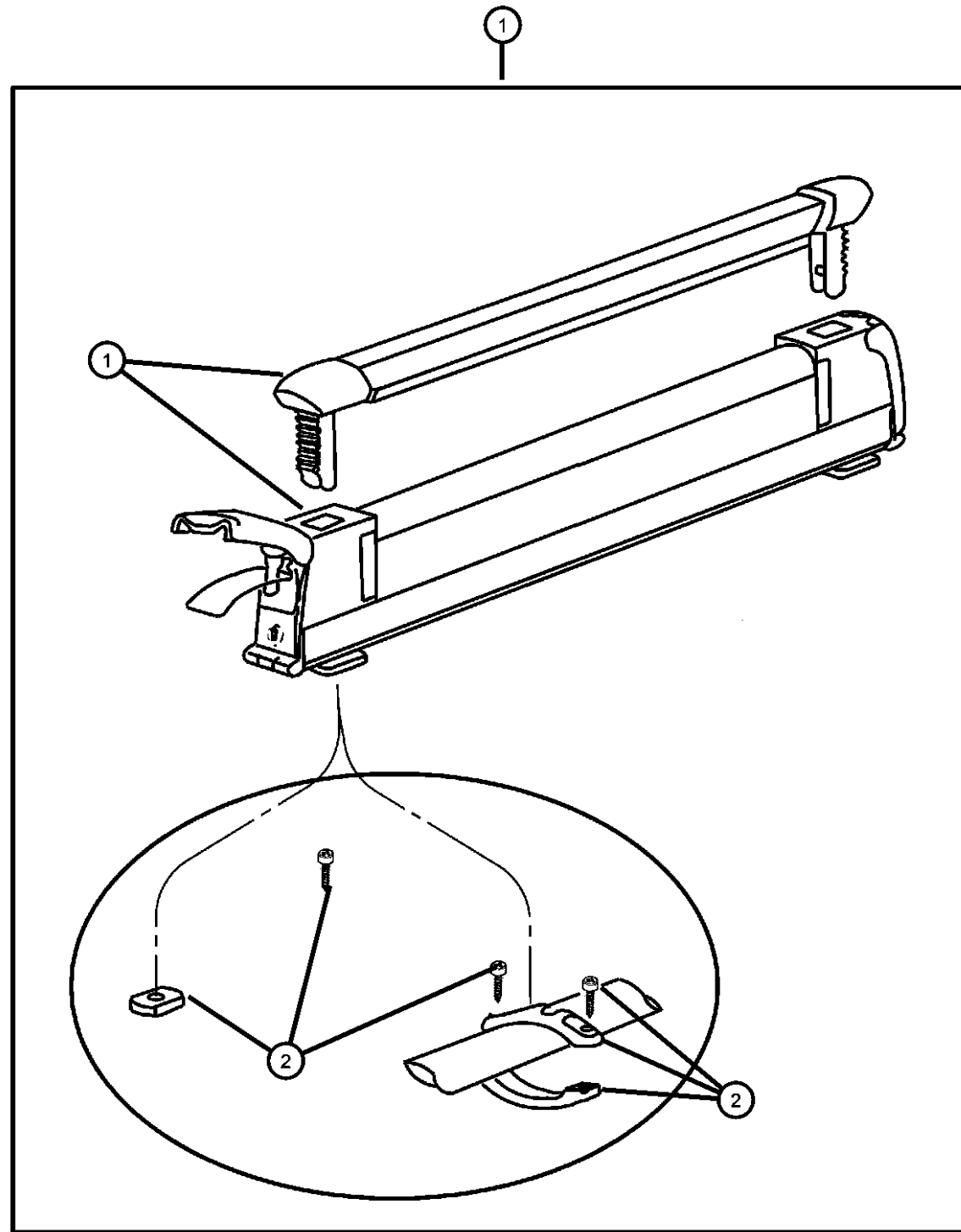
SEBRING, STRATUS, CIRRUS, BREEZE (JR)

SERIES	LINE	BODY	ENGINE	TRANSMISSION
H = HIGHLINE	D = STRATUS, ES	27 = 2-DR CONVERTIBLE	EDZ = ENGINE - 2.4L 4 CYL DOHC 16V SMPI	DD5 = TRANSMISSION - 5-SPEED MANUAL
P = PREMIUM	D = R/T (MEXICO)	41 = 4 DOOR	ECC = ENGINE - 2.0L 4 CYL DOHC 16V SMPI	DGL = TRANSMISSION - 4-SPD. AUTOMATIC, 41TE
S = SPORT	C = SEBRING		EES = ENGINE - 2.7L V6 24V W/ACTIVE INTAKE	DGO = ALL AUTOMATIC
X = SPECIAL	C = CIRRUS (MEXICO)		EDV = Engine - 2.4L 4 Cyl DOHC 16V Turbo	DDO = ALL 5 SPEED MAUAL
			EEO = 2.7L V6 24V	
			ECO = ENGINES - ALL 2.0L 4 CYL	
			EDO = 2.4L 4 CYL 16V DOHCI	

AR = use ase required - = Non illustrated part

2001 JR

Ski Carrier - Roof Mount
Figure 1-220



ITEM	PART NUMBER	QTY	LINE	SERIES	BODY	ENGINE	TRANS	TRIM	DESCRIPTION
1	82205994	1							CARRIER KIT, Ski
2	05019362AA	1							HARDWARE KIT, Mounting

SEBRING, STRATUS, CIRRUS, BREEZE (JR)

SERIES	LINE	BODY	ENGINE	TRANSMISSION
H = HIGHLINE	D = STRATUS, ES	27 = 2-DR CONVERTIBLE	EDZ = ENGINE - 2.4L 4 CYL DOHC 16V SMPI	DD5 = TRANSMISSION - 5-SPEED MANUAL
P = PREMIUM	D = R/T (MEXICO)	41 = 4 DOOR	ECC = ENGINE - 2.0L 4 CYL DOHC 16V SMPI	DGL = TRANSMISSION - 4-SPD. AUTOMATIC, 41TE
S = SPORT	C = SEBRING		EES = ENGINE - 2.7L V6 24V W/ACTIVE INTAKE	DGO = ALL AUTOMATIC
X = SPECIAL	C = CIRRUS (MEXICO)		EDV = Engine - 2.4L 4 Cyl DOHC 16V Turbo	DDO = ALL 5 SPEED MAUAL
			EEO = 2.7L V6 24V	
			ECO = ENGINES - ALL 2.0L 4 CYL	
			EDO = 2.4L 4 CYL 16V DOHCI	

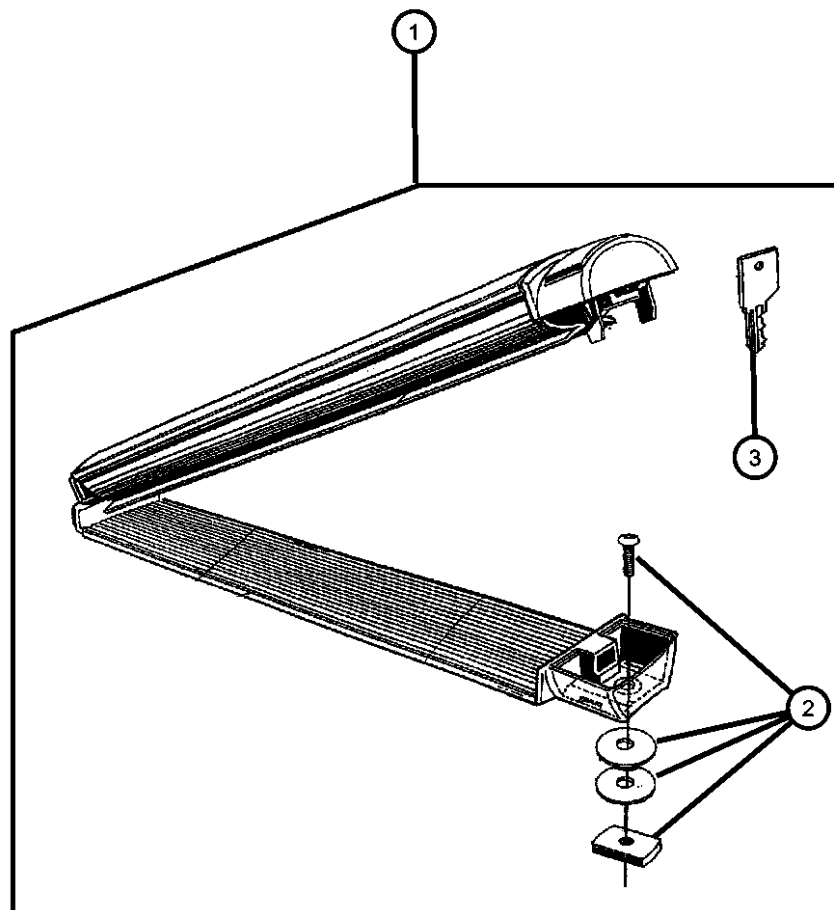
AR = use ase required - = Non illustrated part

**Ski Carrier (Two Pair)
Figure 1-222**

ITEM	PART NUMBER	QTY	LINE	SERIES	BODY	ENGINE	TRANS	TRIM	DESCRIPTION
------	-------------	-----	------	--------	------	--------	-------	------	-------------

NOTE: New keys are Vendor Ship Direct.

1	82203472	1			41				CARRIER KIT, Ski
2	05019077AA	1			41				HARDWARE KIT, Mounting
3	05019077AA	1							KEY, Master, (NOT SERVICED)



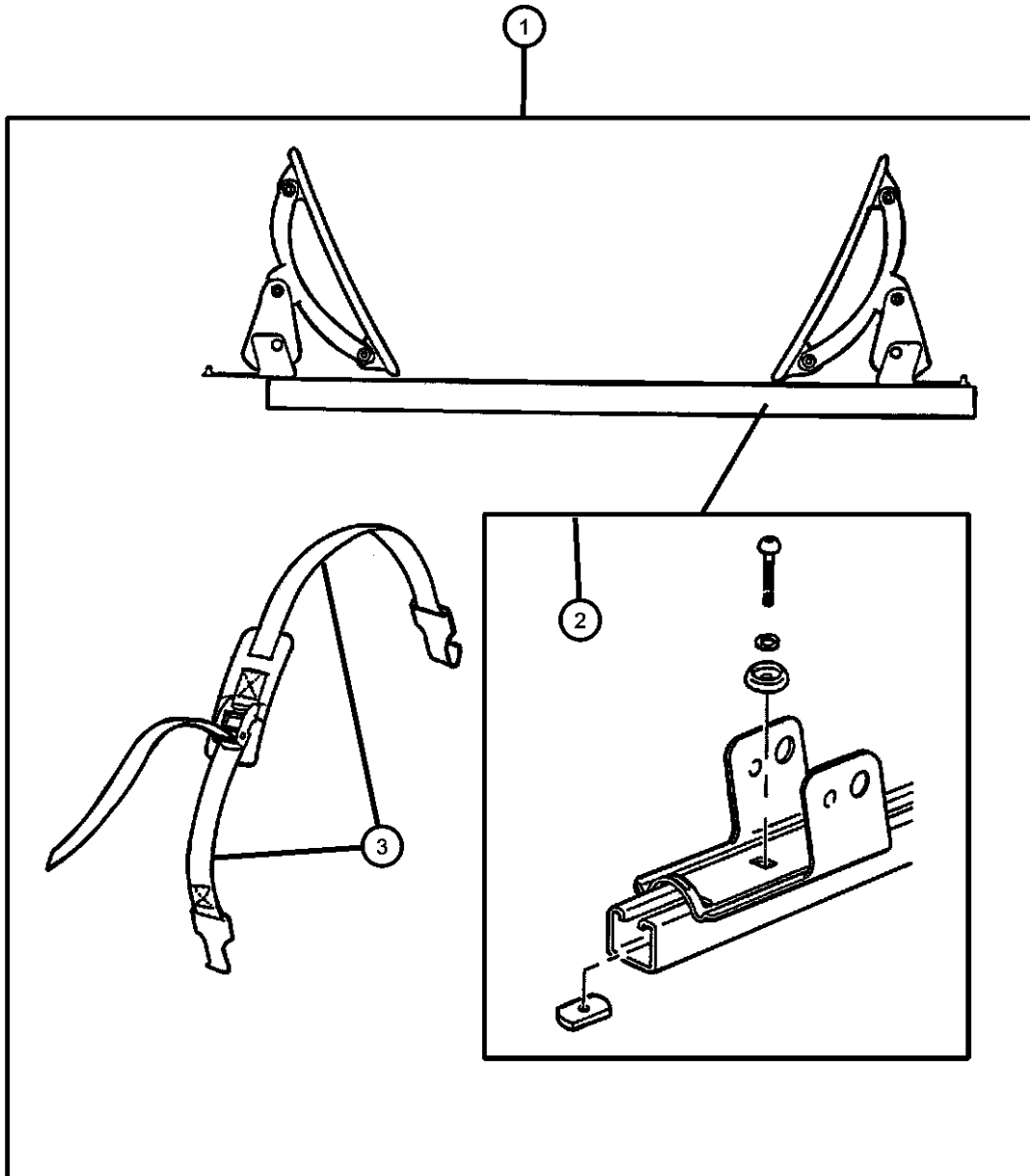
SEBRING, STRATUS, CIRRUS, BREEZE (JR)

SERIES	LINE	BODY	ENGINE	TRANSMISSION
H = HIGHLINE	D = STRATUS, ES	27 = 2-DR CONVERTIBLE	EDZ = ENGINE - 2.4L 4 CYL DOHC 16V SMPI	DD5 = TRANSMISSION - 5-SPEED MANUAL
P = PREMIUM	D = R/T (MEXICO)	41 = 4 DOOR	ECC = ENGINE - 2.0L 4 CYL DOHC 16V SMPI	DGL = TRANSMISSION - 4-SPD. AUTOMATIC, 41TE
S = SPORT	C = SEBRING		EES = ENGINE - 2.7L V6 24V W/ACTIVE INTAKE	DGO = ALL AUTOMATIC
X = SPECIAL	C = CIRRUS (MEXICO)		EDV = Engine - 2.4L 4 Cyl DOHC 16V Turbo	DDO = ALL 5 SPEED MAUAL
			EEO = 2.7L V6 24V	
			EC0 = ENGINES - ALL 2.0L 4 CYL	
			EDO = 2.4L 4 CYL 16V DOHCI	

AR = use ase required - = Non illustrated part

2001 JR

Carrier Kit - Watersports
Figure 1-232



ITEM	PART NUMBER	QTY	LINE	SERIES	BODY	ENGINE	TRANS	TRIM	DESCRIPTION
1	82205416	1			27, 41				CARRIER KIT, Water Sports
2	05016389AA	1	C		27, 41				HARDWARE KIT, Accessory, Consists of : 4- 25MM Button Head Screws, 4- 30MM Button Head Screws, 4- Lock Washers, 4- Dome Washers, 4- Rubber Washers and 4-T-Nuts.
3	05016511AA	1	C		27, 41				STRAP, Cargo Tie Down

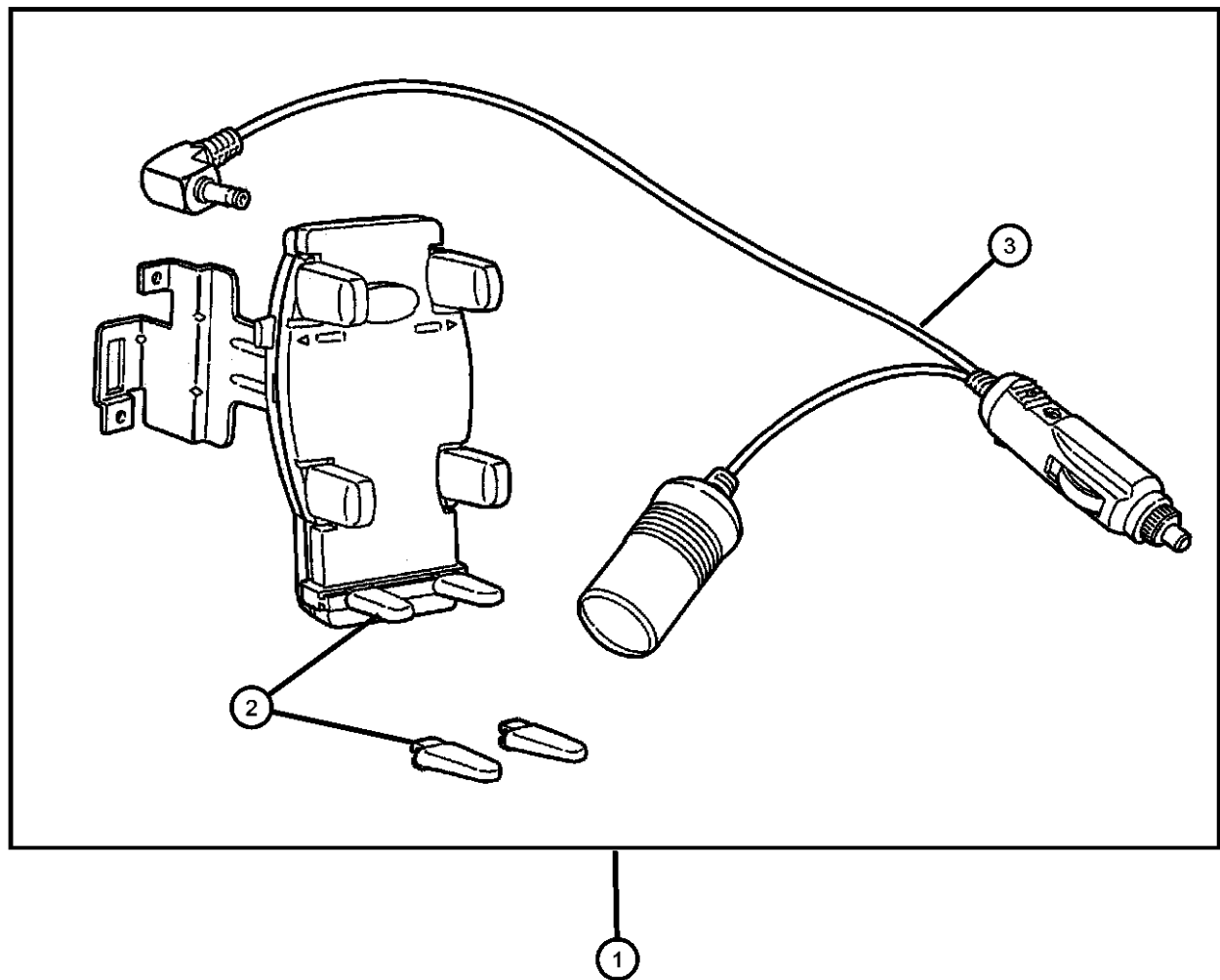
SEBRING. STRATUS, CIRRUS, BREEZE (JR)

SERIES	LINE	BODY	ENGINE	TRANSMISSION
H = HIGHLINE	D = STRATUS, ES	27 = 2-DR CONVERTIBLE	EDZ = ENGINE - 2.4L 4 CYL	DD5 = TRANSMISSION - 5-SPEED
P = PREMIUM	D = R/T (MEXICO)	41 = 4 DOOR	DOHC 16V SMPI	MANUAL
S = SPORT	C = SEBRING		ECC = ENGINE - 2.0L 4 CYL	DGL = TRANSMISSION - 4-SPD.
X = SPECIAL	C = CIRRUS (MEXICO)		DOHC 16V SMPI	AUTOMATIC,41TE
			EES = ENGINE - 2.7L V6 24V	DGO = ALL AUTOMATIC
			W/ACTIVE INTAKE	DDO = ALL 5 SPEED MAUAL
			EDV = Engine - 2.4L 4 Cyl	
			DOHC 16V Turbo	
			EEO = 2.7L V6 24V	
			ECO = ENGINES - ALL 2.0L 4	
			CYL	
			EDO = 2.4L 4 CYL 16V DOHCI	

AR = use ase required - = Non illustrated part

Mounting Kit - Cellular Phone
Figure 1-330

ITEM	PART NUMBER	QTY	LINE	SERIES	BODY	ENGINE	TRANS	TRIM	DESCRIPTION
NOTE: Smart Holder and Bracket Assy. Bracket to be black powder coated low gloss. To order in Packages of 25 order # 82205709.									
NOTE: Holds any wireless handset. Installs to instrument panel.									
NOTE: Packs of 25 of 82205268 - Order 82205477									
1	82206018	1	C, D		41				MOUNTING KIT, Cellular Phone
2	82206018	1							HARDWARE KIT, Accessory, (NOT SERVICED)
3	05016536AA	1			27, 41				CORD, Cellular Phone, Contains: 18 inch cord with Y accessory feed



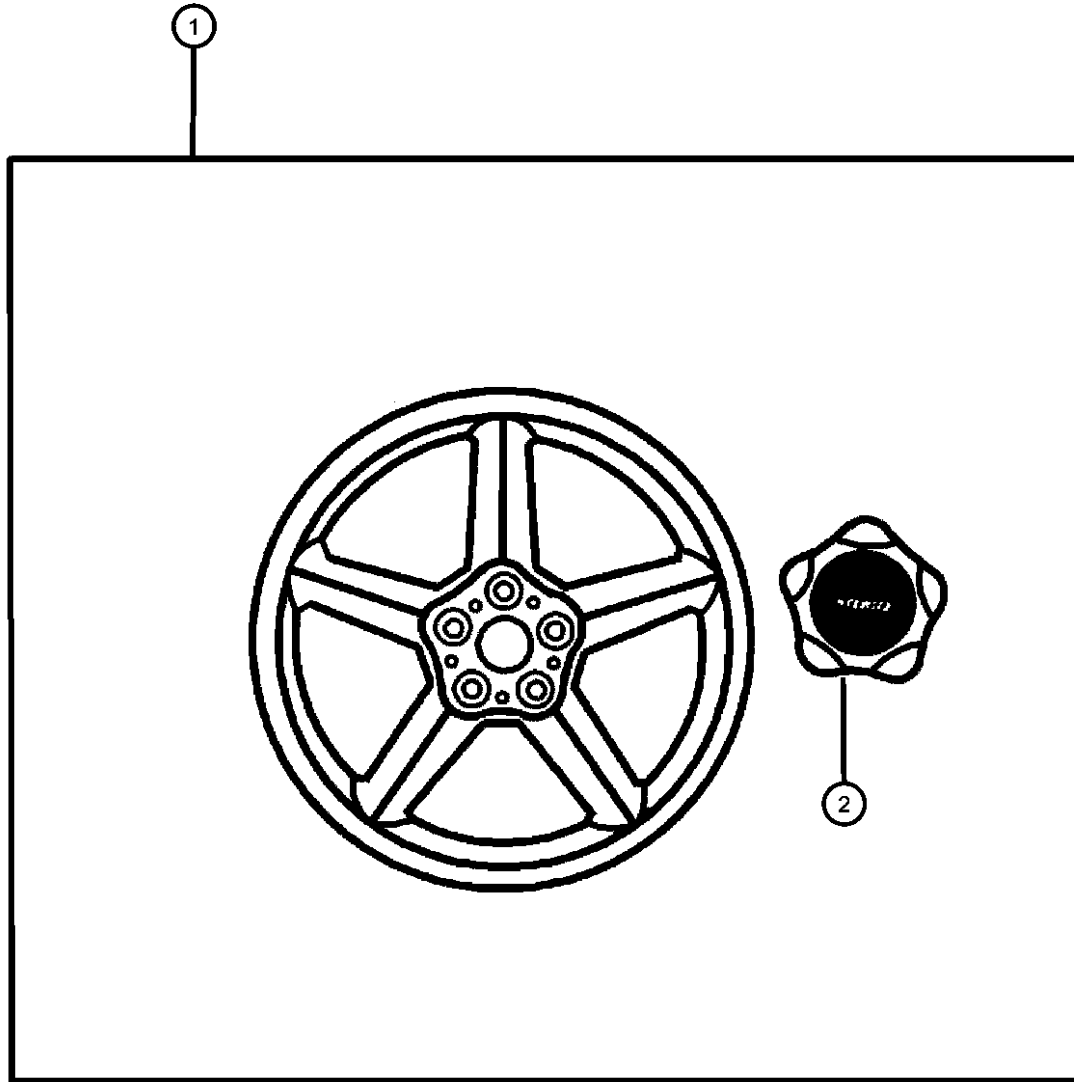
SEBRING, STRATUS, CIRRUS, BREEZE (JR)

SERIES	LINE	BODY	ENGINE	TRANSMISSION
H = HIGHLINE	D = STRATUS, ES	27 = 2-DR CONVERTIBLE	EDZ = ENGINE - 2.4L 4 CYL DOHC 16V SMPI	DD5 = TRANSMISSION - 5-SPEED MANUAL
P = PREMIUM	D = R/T (MEXICO)	41 = 4 DOOR	ECC = ENGINE - 2.0L 4 CYL DOHC 16V SMPI	DGL = TRANSMISSION - 4-SPD. AUTOMATIC, 41TE
S = SPORT	C = SEBRING		EES = ENGINE - 2.7L V6 24V W/ACTIVE INTAKE	DGO = ALL AUTOMATIC
X = SPECIAL	C = CIRRUS (MEXICO)		EDV = Engine - 2.4L 4 Cyl DOHC 16V Turbo	DDO = ALL 5 SPEED MAUAL
			EEO = 2.7L V6 24V	
			ECO = ENGINES - ALL 2.0L 4 CYL	
			EDO = 2.4L 4 CYL 16V DOHCI	

AR = use ase required - = Non illustrated part

Wheel Kit
Figure 1-410

ITEM	PART NUMBER	QTY	LINE	SERIES	BODY	ENGINE	TRANS	TRIM	DESCRIPTION
1	82206782	1							WHEEL KIT, Cast Aluminum, 16x6 Polished
	82206783	1							Chromed
2	05066118AA	1							CAP, Wheel Center Use with 82206782
	05093239AA	1							Use with 82206783
-3	06502738	1							NUT, Wheel Chrome, M12x1.5



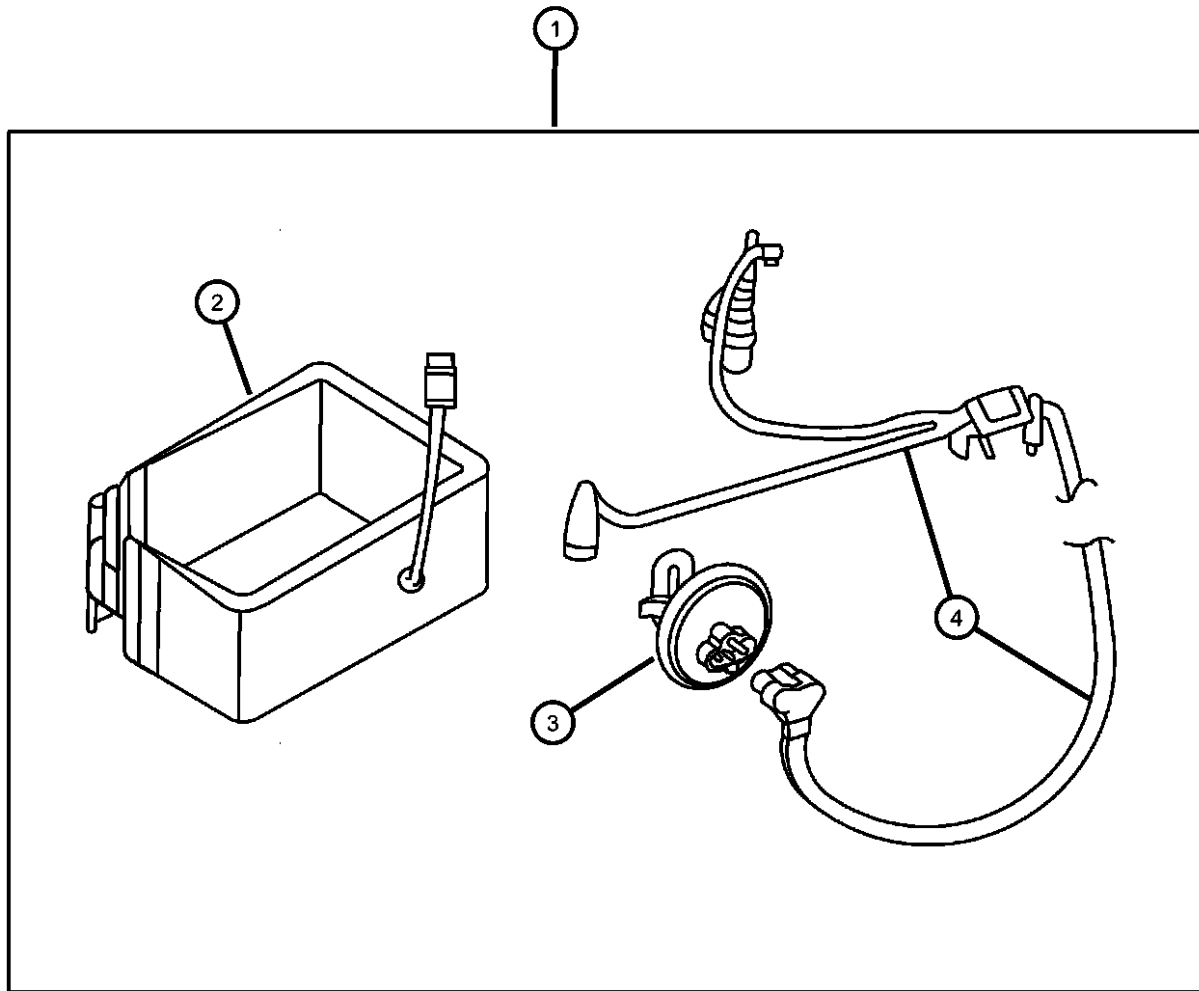
SEBRING, STRATUS, CIRRUS, BREEZE (JR)

SERIES	LINE	BODY	ENGINE	TRANSMISSION
H = HIGHLINE	D = STRATUS, ES	27 = 2-DR CONVERTIBLE	EDZ = ENGINE - 2.4L 4 CYL DOHC 16V SMPI	DD5 = TRANSMISSION - 5-SPEED MANUAL
P = PREMIUM	D = R/T (MEXICO)	41 = 4 DOOR	ECC = ENGINE - 2.0L 4 CYL DOHC 16V SMPI	DGL = TRANSMISSION - 4-SPD. AUTOMATIC, 41TE
S = SPORT	C = SEBRING		EES = ENGINE - 2.7L V6 24V W/ACTIVE INTAKE	DGO = ALL AUTOMATIC
X = SPECIAL	C = CIRRUS (MEXICO)		EDV = Engine - 2.4L 4 Cyl DOHC 16V Turbo	DDO = ALL 5 SPEED MAUAL
			EEO = 2.7L V6 24V	
			ECO = ENGINES - ALL 2.0L 4 CYL	
			EDO = 2.4L 4 CYL 16V DOHCI	

AR = use ase required - = Non illustrated part

Heater Kit - Engine and Battery
Figure 1-610

ITEM	PART NUMBER	QTY	LINE	SERIES	BODY	ENGINE	TRANS	TRIM	DESCRIPTION
1									HEATER KIT, Engine and Battery
	82206642	1			27, 41				2.4L Engine
	82206784	1			27, 41				2.7L Engine
2	04609111AA	1							HEATER, Battery
3									HEATER, Engine Block
	04609325	1			27, 41				2.7L Engine
	05033114AA	1			27, 41				2.0L Engine
	05033157AA	1			27, 41				2.4L Engine
4									CORD, Engine Block Heater
	04609112AA	1			27, 41				2.7L Engine
	04609113AA	1			27, 41				2.0L and 2.4L Engine

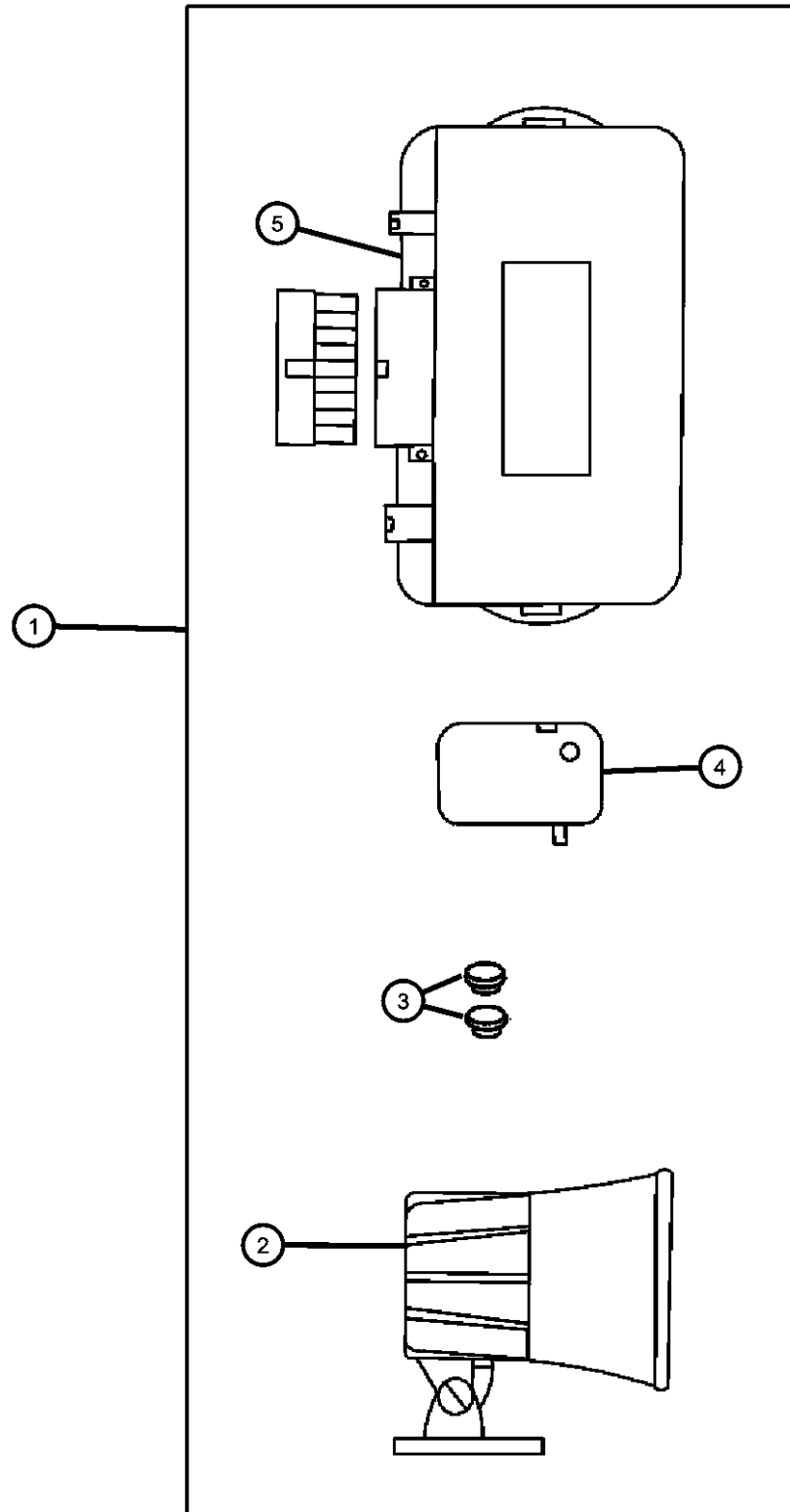


SEBRING, STRATUS, CIRRUS, BREEZE (JR)

SERIES	LINE	BODY	ENGINE	TRANSMISSION
H = HIGHLINE	D = STRATUS, ES	27 = 2-DR CONVERTIBLE	EDZ = ENGINE - 2.4L 4 CYL DOHC 16V SMPI	DD5 = TRANSMISSION - 5-SPEED MANUAL
P = PREMIUM	D = R/T (MEXICO)	41 = 4 DOOR	ECC = ENGINE - 2.0L 4 CYL DOHC 16V SMPI	DGL = TRANSMISSION - 4-SPD. AUTOMATIC, 41TE
S = SPORT	C = SEBRING		EES = ENGINE - 2.7L V6 24V W/ACTIVE INTAKE	DGO = ALL AUTOMATIC
X = SPECIAL	C = CIRRUS (MEXICO)		EDV = Engine - 2.4L 4 Cyl DOHC 16V Turbo	DDO = ALL 5 SPEED MAUAL
			EEO = 2.7L V6 24V	
			ECO = ENGINES - ALL 2.0L 4 CYL	
			EDO = 2.4L 4 CYL 16V DOHCI	

AR = use ase required - = Non illustrated part

Alarm, EVS II
Figure 1-910



ITEM	PART NUMBER	QTY	LINE	SERIES	BODY	ENGINE	TRANS	TRIM	DESCRIPTION
1	82203763	1							MODULE KIT, Alarm without Keyless
2	82203198	1							SIREN, Alarm
3	04636141	1							BATTERY, Transmitter
4	04886374AA	1							TRANSMITTER, Alarm or Keyless
5	05012164AA	1							MODULE, Security Alarm

SEBRING, STRATUS, CIRRUS, BREEZE (JR)

SERIES	LINE
H = HIGHLINE	D = STRATUS, ES
P = PREMIUM	D = R/T (MEXICO)
S = SPORT	C = SEBRING
X = SPECIAL	C = CIRRUS (MEXICO)

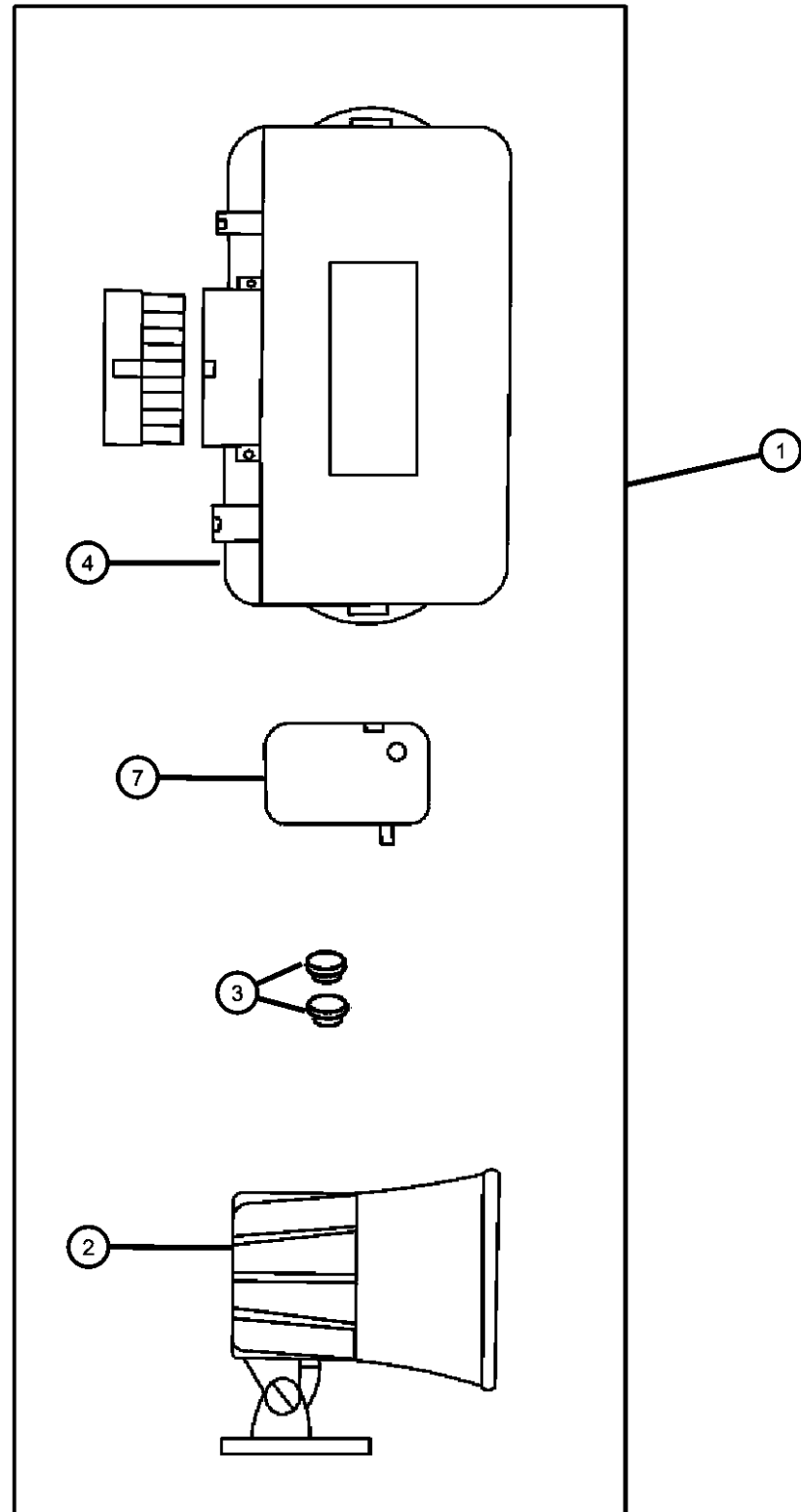
BODY
27 = 2-DR CONVERTIBLE
41 = 4 DOOR

ENGINE
EDZ = ENGINE - 2.4L 4 CYL DOHC 16V SMPI
ECC = ENGINE - 2.0L 4 CYL DOHC 16V SMPI
EES = ENGINE - 2.7L V6 24V W/ACTIVE INTAKE
EDV = Engine - 2.4L 4 Cyl DOHC 16V Turbo
EEO = 2.7L V6 24V
ECO = ENGINES - ALL 2.0L 4 CYL
EDO = 2.4L 4 CYL 16V DOHCI

TRANSMISSION
DD5 = TRANSMISSION - 5-SPEED MANUAL
DGL = TRANSMISSION - 4-SPD. AUTOMATIC, 41TE
DGO = ALL AUTOMATIC
DDO = ALL 5 SPEED MAUAL

AR = use ase required - = Non illustrated part

Alarm EVS II
Figure 1-912



ITEM	PART NUMBER	QTY	LINE	SERIES	BODY	ENGINE	TRANS	TRIM	DESCRIPTION
1	82300985	1							MODULE KIT, Alarm with Keyless
2	82203198	1							SIREN, Alarm
3	04636141	1							BATTERY, Transmitter
4	04883255	1							MODULE, Security Alarm
-5	04886258AA	1							SWITCH, Programing Bypass
-6	04886259AA	1							INDICATOR, Valet Status
7	04886374AA	1							TRANSMITTER, Alarm or Keyless

SEBRING, STRATUS, CIRRUS, BREEZE (JR)

SERIES	LINE
H = HIGHLINE	D = STRATUS, ES
P = PREMIUM	D = R/T (MEXICO)
S = SPORT	C = SEBRING
X = SPECIAL	C = CIRRUS (MEXICO)

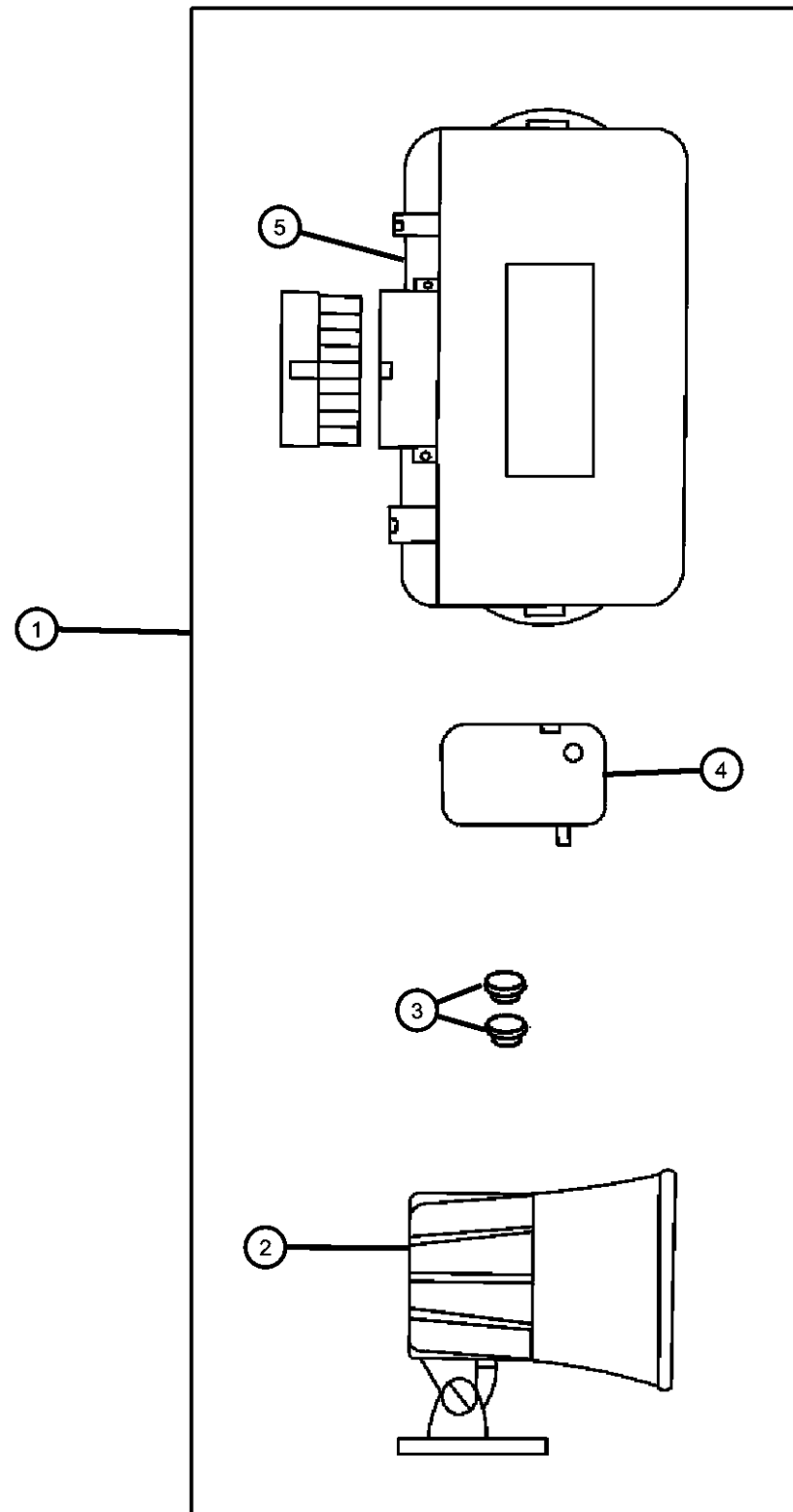
BODY
27 = 2-DR CONVERTIBLE
41 = 4 DOOR

ENGINE
EDZ = ENGINE - 2.4L 4 CYL DOHC 16V SMPI
ECC = ENGINE - 2.0L 4 CYL DOHC 16V SMPI
EES = ENGINE - 2.7L V6 24V W/ACTIVE INTAKE
EDV = Engine - 2.4L 4 Cyl DOHC 16V Turbo
EEO = 2.7L V6 24V
ECO = ENGINES - ALL 2.0L 4 CYL
EDO = 2.4L 4 CYL 16V DOHCI

TRANSMISSION
DD5 = TRANSMISSION - 5-SPEED MANUAL
DGL = TRANSMISSION - 4-SPD. AUTOMATIC,41TE
DGO = ALL AUTOMATIC
DDO = ALL 5 SPEED MAUAL

AR = use ase required - = Non illustrated part

Alarm EVS II
Figure 1-914



ITEM	PART NUMBER	QTY	LINE	SERIES	BODY	ENGINE	TRANS	TRIM	DESCRIPTION
1	82204268	1							MODULE, Security Alarm
2	82203198	1							SIREN, Alarm
3	04636141	1							BATTERY, Transmitter
4	04886374AA	1							TRANSMITTER, Alarm or Keyless
5	05011619AA	1							MODULE, Security Alarm
-6	04886260AB	1							SENSOR, Shock, With Terminals
-7	82206773	1							WIRING KIT, Alarm Security Plus, Required for Instalation

SEBRING, STRATUS, CIRRUS, BREEZE (JR)

SERIES	LINE
H = HIGHLINE	D = STRATUS, ES
P = PREMIUM	D = R/T (MEXICO)
S = SPORT	C = SEBRING
X = SPECIAL	C = CIRRUS (MEXICO)

BODY
27 = 2-DR CONVERTIBLE
41 = 4 DOOR

ENGINE
EDZ = ENGINE - 2.4L 4 CYL DOHC 16V SMPI
ECC = ENGINE - 2.0L 4 CYL DOHC 16V SMPI
EES = ENGINE - 2.7L V6 24V W/ACTIVE INTAKE
EDV = Engine - 2.4L 4 Cyl DOHC 16V Turbo
EEO = 2.7L V6 24V
ECO = ENGINES - ALL 2.0L 4 CYL
EDO = 2.4L 4 CYL 16V DOHCI

TRANSMISSION
DD5 = TRANSMISSION - 5-SPEED MANUAL
DGL = TRANSMISSION - 4-SPD. AUTOMATIC, 41TE
DGO = ALL AUTOMATIC
DDO = ALL 5 SPEED MAUAL

AR = use ase required - = Non illustrated part

2001 JR

Group - 2

Front Suspension & Drive

Group - 2 Front Suspension & Drive

Group-Fig. No.

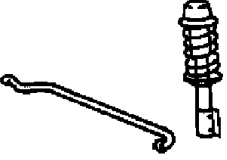
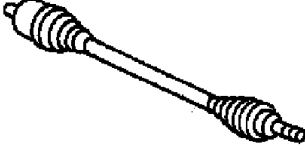
Illustration Title

Front Suspension

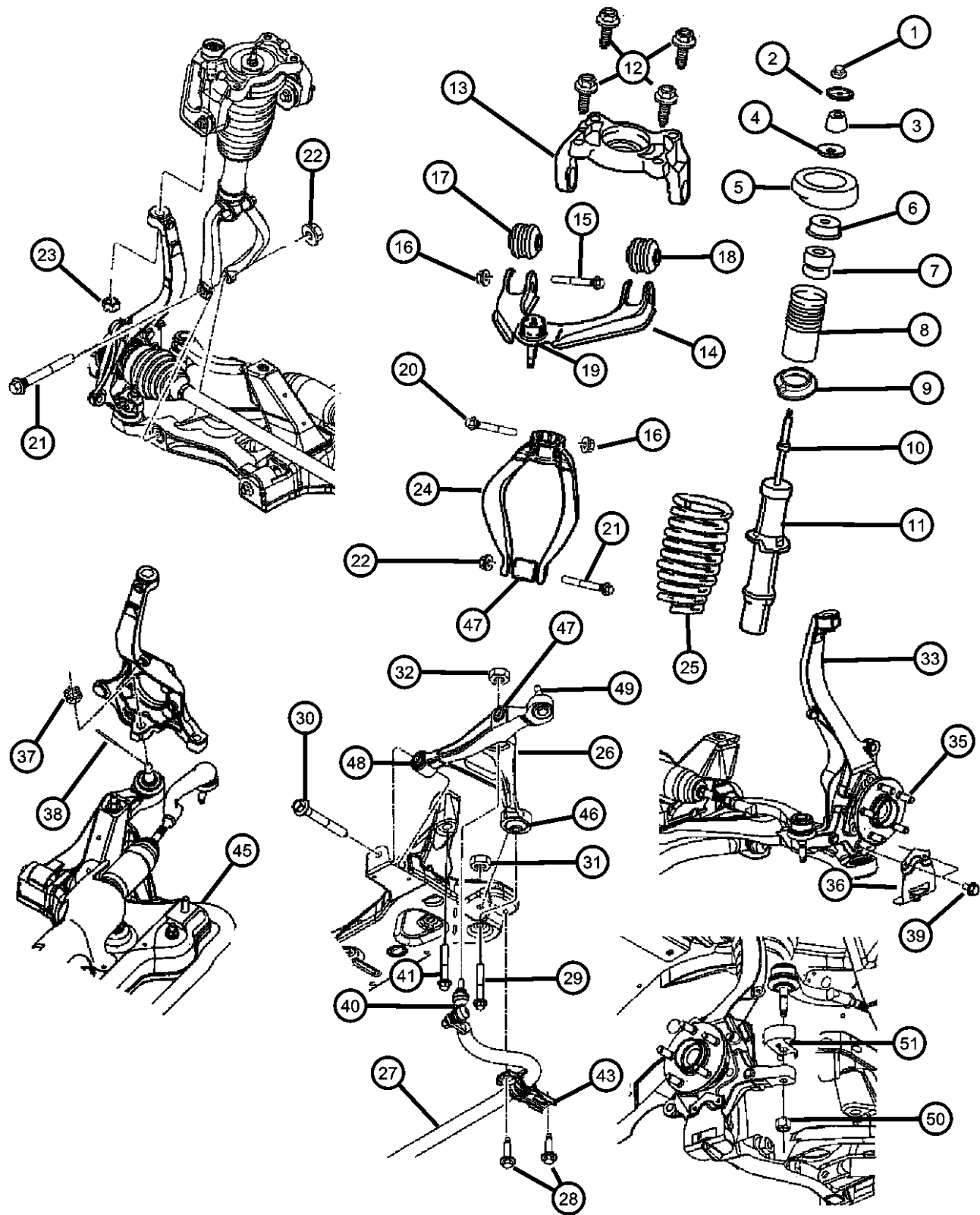
Suspension, Front..... Fig. 2 - 120

Front Axle Drive Shafts

Shaft, Front Drive Fig. 2 - 220

<p>002-100 Front Suspension</p> 	<p>002-200 Front Axle Drive Shafts</p> 		
--	---	--	--

Suspension, Front
Figure 2-120



ITEM	PART NUMBER	QTY	LINE	SERIES	BODY	ENGINE	TRANS	TRIM	DESCRIPTION
------	-------------	-----	------	--------	------	--------	-------	------	-------------

Note: Sales Codes
 ECC = 2.0L 4 Cyl DOHC 16V SMPI Engine
 EDV = 2.4L 4 Cyl DOHC 16V Turbo Engine
 EDZ = 2.4L 4 Cyl DOHC 16V SMPI Engine
 EES = 2.7L V6 24V w/Active Intake Engine
 Sales Code ZCF Thru ZTF= Spring Group Type's Found on Individual Vehical Sales Code Listing

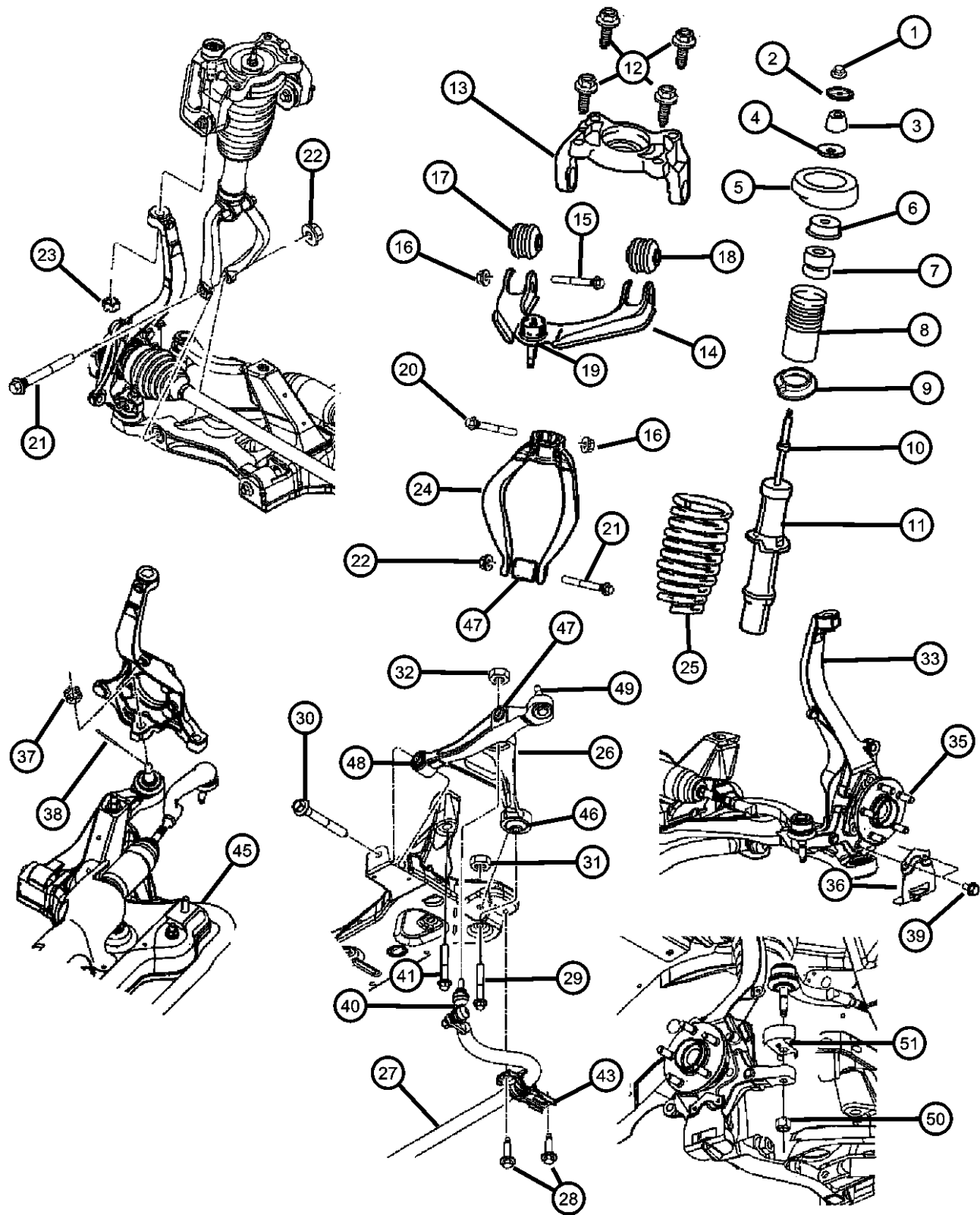
1									NUT, Hex Flange Lock, M14x1.50
	06503644	1			41				Shock Absorber Rod
		1	C		27				Shock Absorber Rod
2									RETAINER, Shock Absorber
	04616934	1			41				
		1	C		27				
3									BUSHING, Shock Absorber
	04764483AA	2			41				
		2	C		27				
4									RETAINER, Shock Absorber
	04695030	1			41				
		1	C		27				
5									ISOLATOR, Spring
	04764505AA	1			41	ECC			
		1	C		27	ECC			
		1			41	EDV, EDZ			
		1			41	EES			
		1	C		27	EES			
6									CUP, Shock Absorber
	04764781AA	1			41	ECC			
		1			41	EDV, EDZ			
		1	C		27	ECC			
		1	C		27	EES			
7									BUMPER, Jounce
	04764778AB	1			41	ECC			
		1			41	EDV, EDZ			

SEBRING, STRATUS, CIRRUS, BREEZE (JR)

SERIES	LINE	BODY	ENGINE	TRANSMISSION
H = HIGHLINE	D = STRATUS, ES	27 = 2-DR CONVERTIBLE	EDZ = ENGINE - 2.4L 4 CYL DOHC 16V SMPI	DD5 = TRANSMISSION - 5-SPEED MANUAL
P = PREMIUM	D = R/T (MEXICO)	41 = 4 DOOR	ECC = ENGINE - 2.0L 4 CYL DOHC 16V SMPI	DGL = TRANSMISSION - 4-SPD. AUTOMATIC, 41TE
S = SPORT	C = SEBRING		EES = ENGINE - 2.7L V6 24V W/ACTIVE INTAKE	DGO = ALL AUTOMATIC
X = SPECIAL	C = CIRRUS (MEXICO)		EDV = Engine - 2.4L 4 Cyl DOHC 16V Turbo	DDO = ALL 5 SPEED MAUAL
			EEO = 2.7L V6 24V	
			EC0 = ENGINES - ALL 2.0L 4 CYL	
			EDO = 2.4L 4 CYL 16V DOHCI	

AR = use ase required - = Non illustrated part

Suspension, Front
Figure 2-120



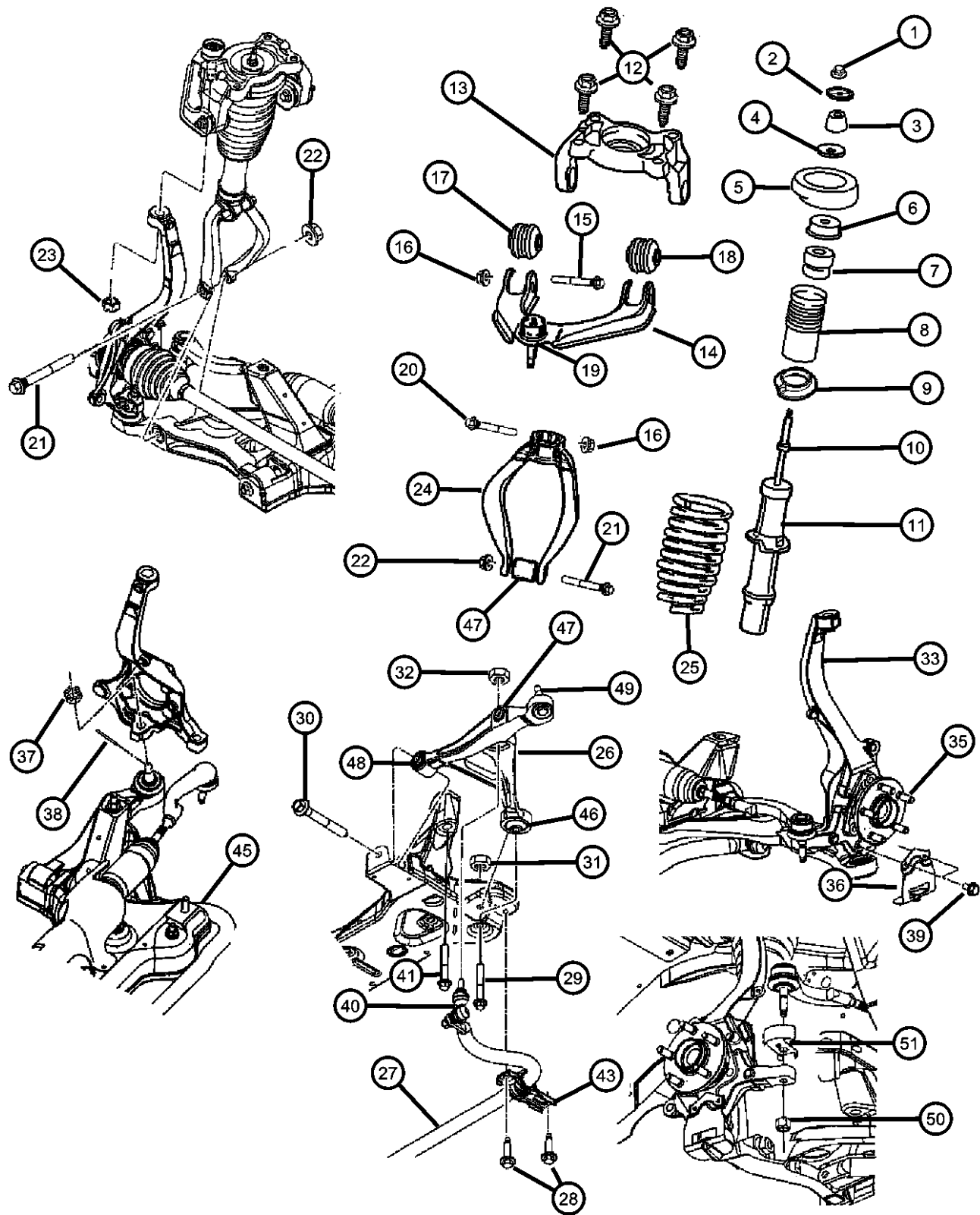
ITEM	PART NUMBER	QTY	LINE	SERIES	BODY	ENGINE	TRANS	TRIM	DESCRIPTION				
8	04764984AA	1	C		27	EES			SHIELD, Shock Absorber Dust				
		1	C		27	ECC							
9	04616982AB	1	C		41	ECC			ISOLATOR, Spring Seat				
		1	C		27	ECC							
		1			41	EDV, EDZ							
		1			41	EES							
		1	C		27	EES							
		1			41	ECC							
		1	C		27	ECC							
		1			41	EDV, EDZ							
		1			41	EES							
		1			27	EES							
10	04695769	1	C		41				COLLAR, Shock Absorber Rod				
		1	C		27								
		11	04879184AA	1			41	ECC				SHOCK ABSORBER, Suspension (ZNK, ZAA)	
				1			41	EDV, EDZ					(ZRB, ZCC)
				1			41	EES					(ZTD, ZDE)
				1	C		27	ECC					(ZNF, ZAG)
1	C				27	EES			(ZTH, ZDJ)				
12	06506678AA	8							SCREW, Hex Head, M12x1.75x60, Shock Tower				
		13	04764552AC	1						BRACKET, Shock Absorber			
				1	C		41	ECC			Right		
				1	C		27	ECC			Right		
1					41	EDV, EDZ	Right						
1			41	EES	Right								

SEBRING, STRATUS, CIRRUS, BREEZE (JR)

SERIES	LINE	BODY	ENGINE	TRANSMISSION
H = HIGHLINE	D = STRATUS, ES	27 = 2-DR CONVERTIBLE	EDZ = ENGINE - 2.4L 4 CYL DOHC 16V SMPI	DD5 = TRANSMISSION - 5-SPEED MANUAL
P = PREMIUM	D = R/T (MEXICO)	41 = 4 DOOR	ECC = ENGINE - 2.0L 4 CYL DOHC 16V SMPI	DGL = TRANSMISSION - 4-SPD. AUTOMATIC, 41TE
S = SPORT	C = SEBRING		EES = ENGINE - 2.7L V6 24V W/ACTIVE INTAKE	DGO = ALL AUTOMATIC
X = SPECIAL	C = CIRRUS (MEXICO)		EDV = Engine - 2.4L 4 Cyl DOHC 16V Turbo	DDO = ALL 5 SPEED MAUAL
			EEO = 2.7L V6 24V	
			ECO = ENGINES - ALL 2.0L 4 CYL	
			EDO = 2.4L 4 CYL 16V DOHCI	

AR = use ase required - = Non illustrated part

Suspension, Front
Figure 2-120



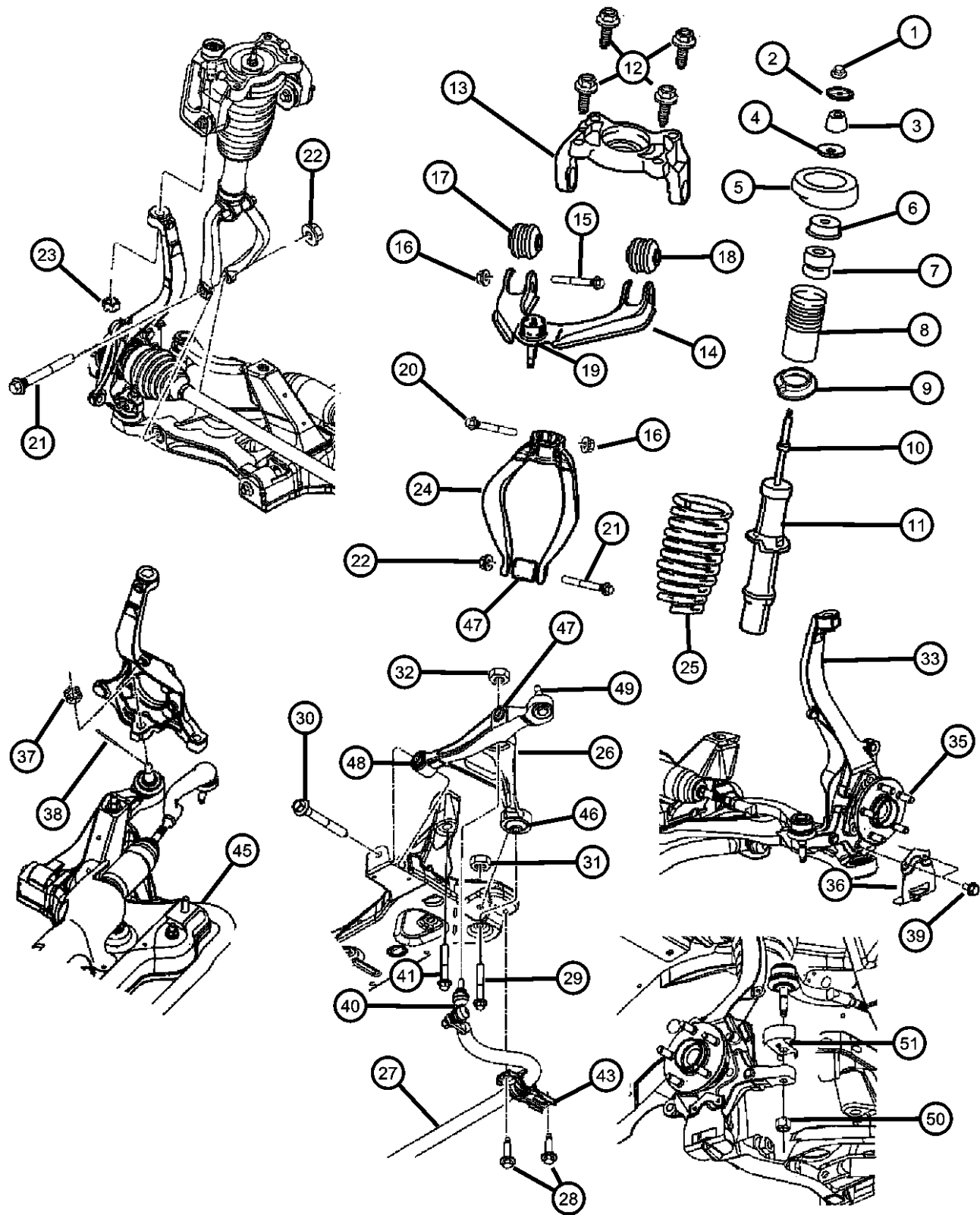
ITEM	PART NUMBER	QTY	LINE	SERIES	BODY	ENGINE	TRANS	TRIM	DESCRIPTION
		1	C		27	EES			Right
	04764553AC	1			41	ECC			Left
		1	C		27	ECC			Left
		1			41	EDV, EDZ			Left
		1			41	EES			Left
		1	C		27	EES			Left
14									ARM, Control
	04764408AB	1			41	ECC			w/Ball Joint, Upper Right
		1	C		27	ECC			w/Ball Joint, Upper Right
		1			41	EDV, EDZ			w/Ball Joint, Upper Right
		1			41	EES			w/Ball Joint, Upper Right
		1	C		27	EES			w/Ball Joint, Upper Right
	04764409AB	1			41	ECC			w/Ball Joint, Upper Left
		1	C		27	ECC			w/Ball Joint, Upper Left
		1			41	EDV, EDZ			w/Ball Joint, Upper Left
		1			41	EES			w/Ball Joint, Upper Left
		1	C		27	EES			w/Ball Joint, Upper Left
15									SCREW, Hex Flange Head, M12x1.75x65
	06101783	2			41	ECC			
		2	C		27	ECC			
		2			41	EDV, EDZ			
		2	C		27	EES			
		2			41	EES			
16									NUT
	06505617AA	1			41	ECC			
		1	C		27	ECC			
		2			41	EDV, EDZ			
		2			41	EES			
		2	C		27	EES			

SEBRING, STRATUS, CIRRUS, BREEZE (JR)

SERIES	LINE	BODY	ENGINE	TRANSMISSION
H = HIGHLINE	D = STRATUS, ES	27 = 2-DR CONVERTIBLE	EDZ = ENGINE - 2.4L 4 CYL DOHC 16V SMPI	DD5 = TRANSMISSION - 5-SPEED MANUAL
P = PREMIUM	D = R/T (MEXICO)	41 = 4 DOOR	ECC = ENGINE - 2.0L 4 CYL DOHC 16V SMPI	DGL = TRANSMISSION - 4-SPD. AUTOMATIC, 41TE
S = SPORT	C = SEBRING		EES = ENGINE - 2.7L V6 24V W/ACTIVE INTAKE	DGO = ALL AUTOMATIC
X = SPECIAL	C = CIRRUS (MEXICO)		EDV = Engine - 2.4L 4 Cyl DOHC 16V Turbo	DDO = ALL 5 SPEED MAUAL
			EEO = 2.7L V6 24V	
			ECO = ENGINES - ALL 2.0L 4 CYL	
			EDO = 2.4L 4 CYL 16V DOHCI	

AR = use ase required - = Non illustrated part

Suspension, Front
Figure 2-120



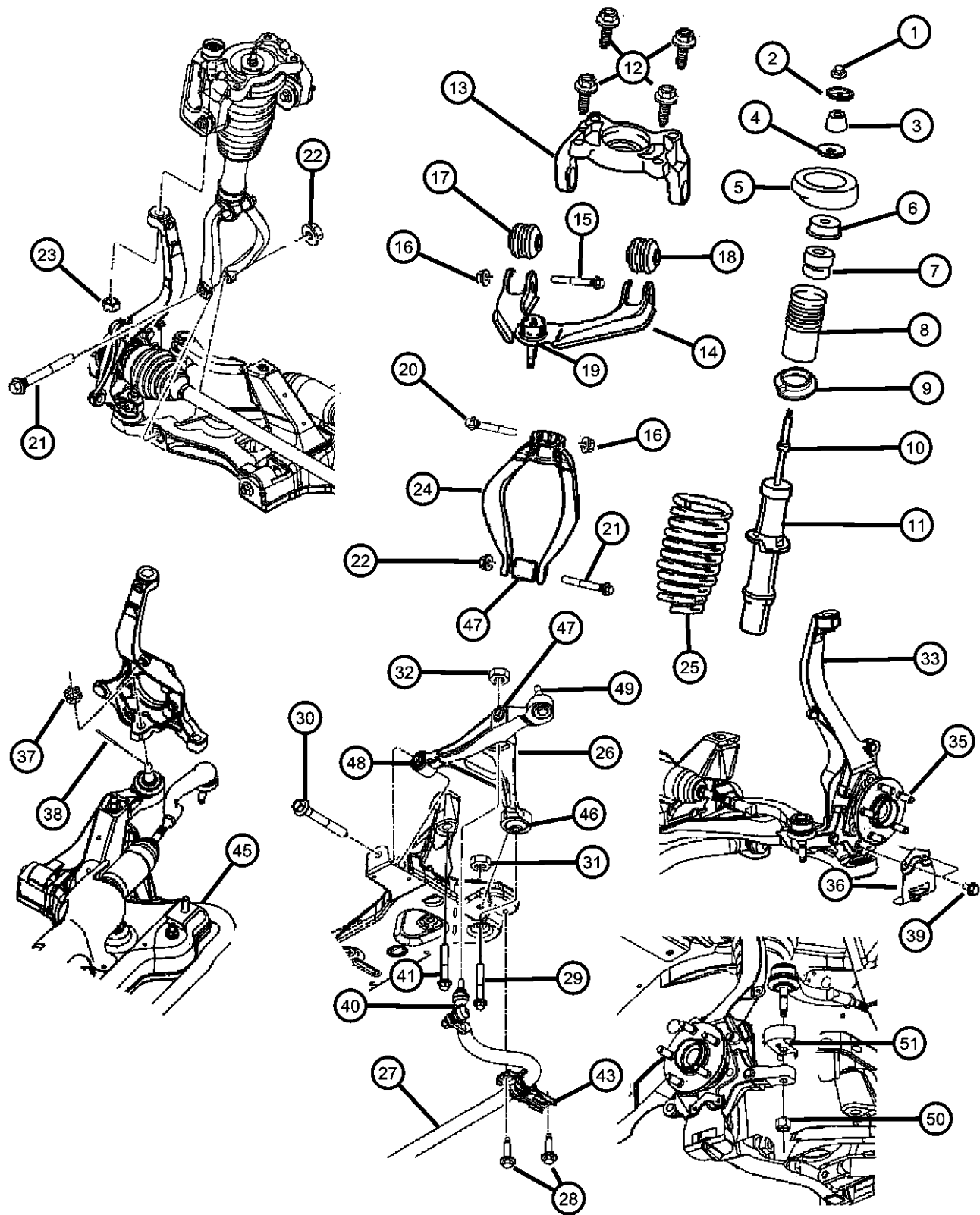
ITEM	PART NUMBER	QTY	LINE	SERIES	BODY	ENGINE	TRANS	TRIM	DESCRIPTION
17	04879189AA	1			41	ECC			BUSHING
		1	C		27	ECC			Upper Control Arm
		1			41	EES			Upper Control Arm
		1	C		27	EES			Upper Control Arm
		1			41	EDV, EDZ			Upper Control Arm
18	04695096	1			41	ECC			BUSHING
		1	C		27	ECC			Upper Control Arm
		1			41	EDV, EDZ			Upper Control Arm
		1			41	EES			Upper Control Arm
		1	C		27	EES			Upper Control Arm
19	04879189AA	1			27	EES			BALL JOINT, Upper Control Arm
	04879225AA	1			41	EDV, EDZ, EES			
		1	C		27	EDV, EDZ, EES			
		1			41	ECC			
		1	C		27	ECC			
		1	C		27	EES			
		1			41	EES			
20	06503862	1			41	ECC			SCREW, Hex Flange Head, M12x1.75x80
		1	C		27	ECC			
		1			41	EDV, EDZ			
		1			41	EES			
		1	C		27	EES			
21	06503889	2							SCREW, Flange Head, M12x1.75x98
22	06503711	2							NUT, Hex Flange Lock, M12x1.75
23	06505623AA	2							NUT AND WASHER

SEBRING, STRATUS, CIRRUS, BREEZE (JR)

SERIES	LINE	BODY	ENGINE	TRANSMISSION
H = HIGHLINE	D = STRATUS, ES	27 = 2-DR CONVERTIBLE	EDZ = ENGINE - 2.4L 4 CYL DOHC 16V SMPI	DD5 = TRANSMISSION - 5-SPEED MANUAL
P = PREMIUM	D = R/T (MEXICO)	41 = 4 DOOR	ECC = ENGINE - 2.0L 4 CYL DOHC 16V SMPI	DGL = TRANSMISSION - 4-SPD. AUTOMATIC, 41TE
S = SPORT	C = SEBRING		EES = ENGINE - 2.7L V6 24V W/ACTIVE INTAKE	DGO = ALL AUTOMATIC
X = SPECIAL	C = CIRRUS (MEXICO)		EDV = Engine - 2.4L 4 Cyl DOHC 16V Turbo	DDO = ALL 5 SPEED MAUAL
			EEO = 2.7L V6 24V	
			ECO = ENGINES - ALL 2.0L 4 CYL	
			EDO = 2.4L 4 CYL 16V DOHCI	

AR = use ase required - = Non illustrated part

Suspension, Front
Figure 2-120



ITEM	PART NUMBER	QTY	LINE	SERIES	BODY	ENGINE	TRANS	TRIM	DESCRIPTION
24	04656234	1			41	ECC			CLEVIS, Front Right
		1	C		27	ECC			Right
		1			41	EDV, EDZ			Right
		1			41	EES			Right
		1	C		27	EES			Right
	04656235	1			41	ECC			Left
		1	C		27	ECC			Left
		1			41	EDV, EDZ			Left
		1			41	EES			Left
		1	C		27	EES			Left
25									SPRING, Front Coil
	04879233AA	1			41	ECC			(ZAA)
	04879244AA	1			41	ECC			(ZNK)
	04879265AA	1			41	EDV, EDZ			(ZCC)
	04879276AA	1			41	EDV, EDZ			(ZRB)
	04879286AA	1			41	EES			(ZTD)
	04879297AA	1			41	EES			(ZDE)
	05024046AB	1	C		27	ECC			(ZNF)
	05024057AB	1	C		27	ECC			(ZAG)
	05024088AB	1	C		27	EES			(ZTH)
	05024099AB	1	C		27	EES			(ZDJ)
26									ARM, Control
	04764500AC	1							Lower Right
	04764501AC	1							Lower Left
27									BAR, Front Sway
	04764470AC	1	C		27				
	04879296AB	1			41				
28	06102215AA	2							SCREW, Sway Bar Clamp to Body or Crossmember

SEBRING, STRATUS, CIRRUS, BREEZE (JR)

SERIES	LINE	BODY	ENGINE	TRANSMISSION
H = HIGHLINE	D = STRATUS, ES	27 = 2-DR CONVERTIBLE	EDZ = ENGINE - 2.4L 4 CYL DOHC 16V SMPI	DD5 = TRANSMISSION - 5-SPEED MANUAL
P = PREMIUM	D = R/T (MEXICO)	41 = 4 DOOR	ECC = ENGINE - 2.0L 4 CYL DOHC 16V SMPI	DGL = TRANSMISSION - 4-SPD. AUTOMATIC, 41TE
S = SPORT	C = SEBRING		EES = ENGINE - 2.7L V6 24V W/ACTIVE INTAKE	DGO = ALL AUTOMATIC
X = SPECIAL	C = CIRRUS (MEXICO)		EDV = Engine - 2.4L 4 Cyl DOHC 16V Turbo	DDO = ALL 5 SPEED MAUAL
			EEO = 2.7L V6 24V	
			ECO = ENGINES - ALL 2.0L 4 CYL	
			EDO = 2.4L 4 CYL 16V DOHCI	

AR = use ase required - = Non illustrated part