

Samson - Icarus - Runner - Zeus

macchine edili ed agricole
d DIECI

OPERATION AND MAINTENANCE MANUAL



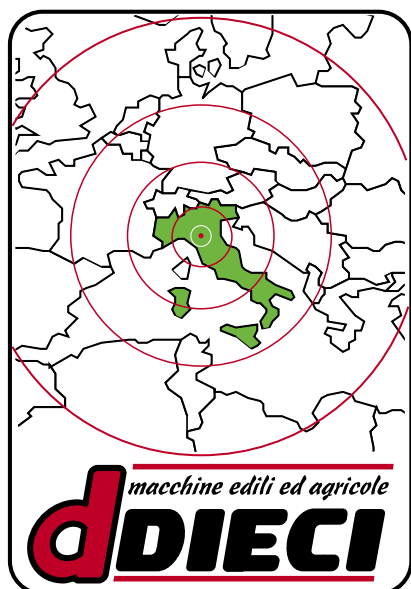
Via E. Majorana, 2-4
42027 Montecchio Emilia (RE) ITALY
Tel. +39 0522 869611 Fax +39 0522 869744
www.dieci.com - E-mail: mailbox@dieci.com



ATTENTION: ALWAYS KEEP A COPY OF THIS MANUAL
ON THE MACHINE AT THE OPERATOR'S DISPOSAL

EVERY TELESCOPIC LIFT IS ACCOMPANIED BY A COPY OF THIS MANUAL, A COPY OF THE ENGINE USE AND MAINTENANCE MANUAL DRAWN-UP BY THE MANUFACTURER OF THE SAME AND A COPY OF THE USE AND MAINTENANCE MANUAL RELATIVE TO EVERY DEVICE AND ALL EQUIPMENT WITH WHICH THIS VEHICLE IS SUPPLIED.

THESE MANUALS ARE WRITTEN BY THE RESPECT PRODUCT SUPPLIERS, OR REPRODUCED ACCURATELY AND IN FULL BY DIECI WITH THEIR SPECIFIC AUTHORISATION. THEY MAY INCLUDE ADDITIONAL SPECIFICATIONS WRITTEN BY DIECI.



www.dieci.com

VIA E. MAJORANA, 2-4
42027 - MONTECCHIO E. (RE) - ITALY
TEL. ++39 0522-869611
FAX ++39 0522-869744
e-mail: info@dieci.com

Original title:
Use and Maintenance Instructions
Dieci-06/2010



DIECI S.r.l. is not liable for damages caused as a result of the use of non-original parts

UFF. ASSISTENZA E RICAMBI

Tel. ++ 39 0522-869611 - FAX ++ 39 0522-869744

DEPARTAMENTO DE ASISTENCIA Y REPUESTOS

Tel. ++ 39 0522-869611 - FAX ++ 39 0522-869744

BUREAU ASSISTANCE ET PIÈCES DE RECHANGE

Tel. ++ 39 0522-869611 - FAX ++ 39 0522-869744

SERVICE AND SPARE PARTS DEPARTMENT

Tel. ++ 39 0522-869611 - FAX ++ 39 0522-869744

Cod.AXH1146/UK

WARNING:

All the documentation supplied is an integral and essential part of the product and must be kept where it can be easily accessed by every user. Users must carefully read the aforesaid documentation before starting to use the product.

Improper, incorrect or irrational use of the machine or its accessories is forbidden.

It is also forbidden to carry out any modifications that could alter the structure or function of the machine.

IT IS FORBIDDEN TO REPRODUCE ENTIRELY OR IN PART THE CONTENTS OF THIS MANUAL AND RELATIVE MULTIMEDIA PRODUCT: Dieci S.r.l. SHALL SAFEGUARD THESE RIGHTS.

CAUTION: A COPY OF THIS MANUAL MUST BE KEPT ON THE MACHINE WHERE IT CAN BE CONSULTED BY THE OPERATOR



CHAPTER "A"

INTRODUCTION, GUARANTEE, VEHICLE IDENTIFICATION

INTRODUCTION	A/3
WARRANTY	A/4
VEHICLE IDENTIFICATION	A/6
TELEHANDLER IDENTIFICATION	A/7

CHAPTER "B"

SAFETY REGULATIONS

RECOGNISE SAFETY STANDARDS	B/2
GENERAL WARNINGS.....	B/3
PROTECTIVE CLOTHING	B/4
INSPECTING THE VEHICLE	B/4
PREPARING FOR EMERGENCIES	B/5
DRIVER'S CAB.....	B/6
DRIVING AUTHORISATIONS.....	B/7
STARTING THE VEHICLE	B/7
OPERATING IN SAFETY	B/8
HANDLING THE LOAD	B/12
PARKING THE VEHICLE.....	B/13
TEMPORARY HALT.....	B/13
ROAD TRAVEL.....	B/14
ROAD TRAVEL (INSTRUCTIONS).....	B/14
LIFTING THE VEHICLE	B/15
TRANSPORTING THE VEHICLE.....	B/15
ELECTROMAGNETIC INTERFERENCE.....	B/16
VIBRATIONS	B/16
CARRYING OUT MAINTENANCE IN SAFETY	B/16
STORAGE/PROLONGED INACTIVITY	B/19
PREPARATION AFTER PROLONGED INACTIVITY	B/19
CLEANING THE VEHICLE	B/19
CLEANING THE WINDOWS.....	B/20
CLEANING THE CAB	B/20
SAFETY STICKERS	B/20
FIRE PREVENTION	B/21
BATTERIES	B/22
START-UP WITH AUXILIARY BATTERIES	B/23
PROTECTION OF THE ELECTRIC PLANT	B/24
TIGHTENING WHEEL NUTS.....	B/25
TYRES.....	B/25
STORAGE OF DANGEROUS LIQUIDS	B/27
CONTACT WITH DANGEROUS LIQUIDS	B/27
DIESEL	B/28
FEATURES OF THE RECOMMENDED FUEL	B/28
CLEANING AND STORING DIESEL FUEL	B/29
ECOLOGICAL CONSIDERATIONS	B/30
WASTE DISPOSAL	B/30
CHECKING WIND SPEED	B/32
EVALUATING SUBSOIL CONSISTENCY	B/33
SAFETY DEVICES	B/34
DRIVER'S CAB.....	B/37
ROPS-FOPS CAB	B/37
LOAD TABLES	B/38
USING LOAD TABLES AND BOOM INDICATORS	B/38
HANDLING THE LOAD	B/42
SAFETY STICKERS	B/46

CHAPTER C**USER INSTRUCTIONS AND GETTING TO KNOW THE VEHICLE**

GENERAL WARNINGS.....	C/3
IDENTIFYING THE VEHICLE PARTS	C/4
GETTING IN AND OUT OF THE DRIVER'S CAB	C/6
DOOR OPENING CONTROLS	C/6
DOOR OPENING INTERNAL CONTROLS	C/6
OPENING THE DOOR WINDOW.....	C/7
REAR WINDOW.....	C/7
UPPER ROOF.....	C/7
REAR EMERGENCY EXIT	C/8
ENGINE BONNET OPENING LEVER.....	C/8
MAX 180W SOCKET	C/8
TECHNICAL DOCUMENTATION POCKET.....	C/9
COURTESY COMPARTMENT	C/9
LIGHTING INSIDE CAB.....	C/9
STEERING WHEEL (ADJUSTMENT)	C/10
SEAT BELTS.....	C/11
SEAT.....	C/12
IDENTIFYING THE CAB PARTS	C/15
CENTRAL DASHBOARD INDICATOR LIGHTS.....	C/16
CENTRAL DASHBOARD - USE OF INSTRUMENTS	C/17
IGNITION SWITCH	C/23
PEDALS.....	C/24
MULTI-FUNCTION LEVER	C/25
FAST/SLOW GEAR SWITCH	C/27
HYDRAULIC GEAR SWITCH (OPTIONAL).....	C/28
PARKING BRAKE.....	C/30
SPIRIT LEVEL AND INCLINOMETER	C/31
BOOM CONTROL LEVER	C/32
JOYSTICK 3 IN 1 EXTENSION ON/OFF (STANDARD VERSION)	C/33
3 IN 1 PROPORTIONAL EXTENSION JOYSTICK (STANDARD VERSION).....	C/34
3 IN 1 JOYSTICK FOR BASKET	C/35
JOYSTICK 4 PROPORTIONAL MOVEMENTS FOR BASKET.....	C/36
4 IN 1 PROPORTIONAL SERVICES PROPORTIONAL CONTROL JOYSTICK.....	C/37
4 IN 1 PROPORTIONAL SERVICES PROPORTIONAL CONTROL JOYSTICK.....	C/38
ANTI-TIPPING DEVICE	C/40
VEHICLE FUNCTIONS SELECTOR (OPTIONAL).....	C/42
STANDARD STEERING SELECTOR	C/43
STEERING SELECTOR (OPTIONAL)	C/44
WHEEL ALIGNMENT INDICATOR CONSENT (OPTIONAL).....	C/45
REAR WINDSCREEN WIPER CONTROLS	C/46
EMERGENCY LIGHTS SELECTOR.....	C/46
MANUAL ACCELERATOR	C/46
CAB INTERNAL AIR CIRCULATION	C/47
CAB INTERNAL AIR CIRCULATION	C/48
REVOLVING LIGHT SWITCH	C/50
CAB FRONT LIGHTS CONSENT (OPTIONAL)	C/50
CAB REAR LIGHTS CONSENT (OPTIONAL)	C/50
BOOM HEAD LIGHTS CONSENT (OPTIONAL)	C/51
OUTRIGGER FEET	C/52
FRONT DIFFERENTIAL AXLE LEVELLING (OPTIONAL).....	C/53
BOOM HEAD SOLENOID VALVE (OPTIONAL)	C/54
BOOM HEAD SOCKET (OPTIONAL)	C/54
REAR HYDRAULIC SOCKETS (OPTIONAL).....	C/55
2-SPEED BOOM (OPTIONAL)	C/56
REVERSIBLE FAN (OPTIONAL)	C/57
WATER HEATER (OPTIONAL).....	C/58
VEHICLE TOWING.....	C/60
PUTTING THE VEHICLE IN NEUTRAL	C/61
BASKET EMERGENCY	C/64
CATALYTIC PURIFIER (OPTIONAL).....	C/67
WATER DRIVEN PURIFIER (OPTIONAL)	C/67

CHAPTER "C"

USER INSTRUCTIONS AND GETTING TO KNOW THE VEHICLE

"CENTRAL DASHBOARD" - INTEGRATED DEVICES

LCD	C/71
Speedometer; (optional)	C/71
Hodograph (optional).....	C/71
BUTTONS.....	C/72
Changing display visualisation.....	C/72
Clock regulation.....	C/72
Dashboard instrument initial check	C/73
ANTI-TIPPING SYSTEM TEST	C/74
GENERAL ALARM INDICATOR LIGHT	C/74
Engine error.....	C/74
Switch-on of dashboard indicator lights.....	C/75
SERVICE	C/76

CHAPTER "D"

MAINTENANCE AND REGISTRATION

MAINTENANCE PRESCRIPTIONS.....	D/3
INTRODUCTION	D/3
RUNNING IN PERIOD.....	D/4
DECLARATION OF VIBRATORY EMISSIONS	D/5
DECLARATION OF FIRST INSPECTION BY MANUFACTURER	D/5
IDENTIFYING THE VEHICLE PARTS	D/6
MAINTENANCE AND REGISTRATION SCHEDULE	D/8
Capacity of parts to lubricate - mod. SAMSON	D/11
Capacity of parts to lubricate - mod. ICARUS	D/12
Capacity of parts to lubricate - mod. RUNNER	D/13
Capacity of parts to lubricate - mod. ZEUS	D/14
OIL COMPARISON TABLE	D/15
ENGINE BONNET OPENING	D/17
UNDERSIDE PROTECTION REMOVAL.....	D/19
PEDALS.....	D/20
PARKING BRAKE.....	D/22
Hydraulic oil level	D/23
Changing hydraulic oil and replacing filters.....	D/24
Hydraulic filter	D/25
FUEL TANK	D/26
WATER/OIL/INTERCOOLER RADIATOR	D/34
CYLINDERS BLOCK VALVES	D/38
REDUCER - Gear box oil	D/40
FRONT/REAR DIFFERENTIAL AXLES - Oil change	D/42
PLANETARY REDUCTION GEAR - Oil change	D/44
TELESCOPIC BOOM BLOCKS	D/47
GREASING NIPPLES	D/50
FUSES	D/50
MAIN CONTROL UNIT	D/52
LIGHTING	D/54
PRELOADS AND COUPLING TORQUE TABLE OF CLASS 1 NUTS AND BOLTS.....	D/55
PRELOADS AND COUPLING TORQUE TABLE OF CLASS 2 NUTS AND BOLTS.....	D/56
COUPLING TORQUE TABLES REGARDING THE HYDRAULIC FITTINGS.....	D/57
TROUBLESHOOTING	D/60
INSTRUCTIONS FOR DRAWING-UP THE CONTROL REGISTER	D/60
OBLIGATIONS AND METHODS OF MAKING CLAIMS TO THE I.S.P.E.S.L.	D/60
PERIODICAL INSPECTIONS AND METHODS OF RECORDING	D/61
VEHICLE DETAILS	D/61
RECORDING ROUTINE VERIFICATIONS AND MAINTENANCE INTERVENTIONS	D/63


CHAPTER "E"
ELECTRICAL DIAGRAMS AND CIRCUITS

CHAPTER "F"
HYDRAULIC PLANT

CHAPTER "G"
TECHNICAL INFORMATION SHEETS


CHAPTER "H"
ALFABETICAL INDEX


Dear customer,

Congratulations and thank-you for choosing a  machine.

This handbook has been written so that you can appreciate the qualities of this machine to the full.

It is advisable to read this handbook in its entirety before using the machine for the first time.

It contains information, advice and important warnings for use, which will help you to exploit the technical advantages of your  machine fully.

You will discover its specifications and special features, as well as find essential information regarding maintenance and care to ensure safe use and an extended lifetime of your  machine.

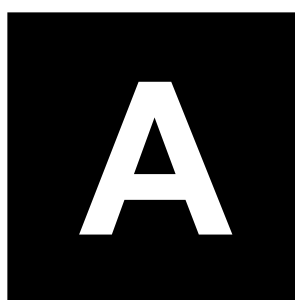
The personnel, who will be at your assistance, wish you ALL THE BEST, certain that this handbook will prove an invaluable aid to fully appreciating your new machine.

Best regards,

The Sales Management



INTRODUCTION VEHICLE IDENTIFICATION WARRANTY





BEFORE COMMISSIONING THE VEHICLE, THE OPERATOR MUST THOROUGHLY READ THIS MANUAL IN ORDER TO COMPLETELY UNDERSTAND FUNCTIONING OF THE TELESCOPIC LIFT AND BE SUITABLY PREPARED FOR ITS USE.

USE OF THE VEHICLE DIFFERENT TO THAT DESCRIBED IN THIS MANUAL IS PROHIBITED AND RELIEVES *dieci* FROM ANY LIABILITY FOR INJURY/DAMAGE CAUSED TO PERSONS, ANIMALS AND OBJECTS.

DURING USE OF THE VEHICLE, SCRUPULOUSLY FOLLOW THE RESPECTIVE DIAGRAMS OF THE ACCESSORY MOUNTED.



INTRODUCTION

The purpose of this manual is to provide the Operator with efficient and safe instructions on the use and maintenance of the telehandler.

Following these instructions carefully will allow you to obtain, full efficiency and a long working life from your vehicle, and will help to make your work considerably easier.

This Use and Maintenance manual is provided by the Dealer upon delivery of the vehicle, in order to make sure that these instructions are read and correctly understood. Should you have trouble understanding any part of this manual, do not hesitate to contact your nearest Dealer for clarification, as it is of utmost importance that the operation and maintenance guidelines be fully understood and carefully observed. Routine maintenance should be carried out regularly, keeping a record of the vehicle's working hours.

Use only original spare parts when spare parts are required. Local Dealers can supply original spare parts as well as advice and instructions for their installation and use. The use of non-original spare parts may cause damage to other parts of the vehicle. Customers are advised to purchase all spare parts required only from an authorised Agent or Dealer.

Should the vehicle be destined for use in particularly severe conditions (for example on argillaceous or muddy terrain), we advise consulting your nearest dealer for specific instructions. Failure to observe these instructions may result in the vehicle's guarantee being voided.

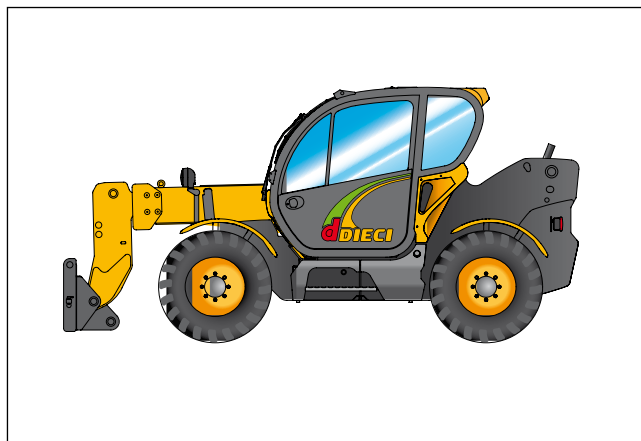
This manual has been published for worldwide distribution and the availability of certain equipment referred to as being essential or available on request may vary according to the geographical location in which the vehicle is being used. All details about the equipment available in your area can be obtained from your nearest Distributor or Dealer.

For manufacturing requirements, the standard production vehicles may differ in some details stated in this manual. The Company reserves the right to make modifications without forewarning.

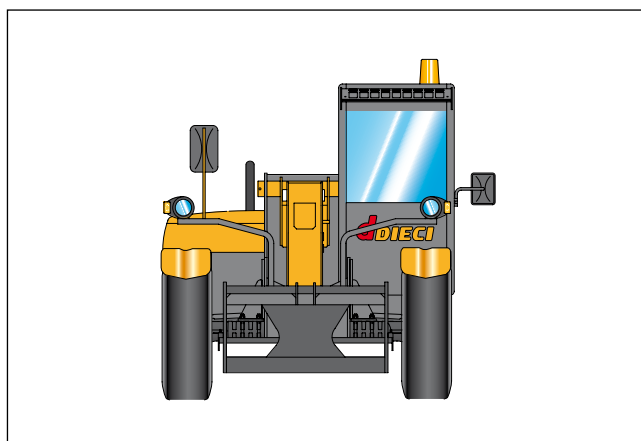
As a result of continuous technical improvements introduced, as well as updating and publication timetables, the data included in this manual may be subject to change at any time and should not be considered binding.

In some illustrations, the panels or covers have been removed in order to make the figure clearer. Never use the vehicle without these panels or protective coverings.

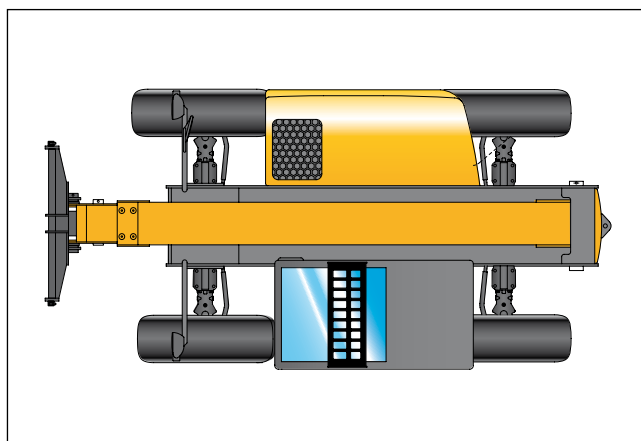
The left and right positions indicated in this manual refer to the vehicle as viewed from its back looking towards the front, or rather, the view of the operator when sitting in the driver's seat.



LEFT SIDE



FRONT VIEW



VIEW FROM ABOVE

WARRANTY

WARRANTY: TERM, STARTING DATE AND ACTIVATION

Warranty: term

DIECI S.r.l. (hereinafter referred to as DIECI), guarantees its products for 12 months from delivery date to the end customer, but not exceeding 18 months from the date the machine left the manufacturer's factory (in sales to distributors or dealers).

Warranty: starting date

The guarantee is valid from the date the machine is forwarded from the factory (sale to distributors or dealers). When delivery is handled by the distributor or dealer, **DIECI** reserves the right to verify that the warranty starting date corresponds to the shipping or delivery date on the product transport document and/or the invoice date and may ask to see the original copies of these documents.

Warranty: activation

The warranty is activated automatically from the date the machine is forwarded from the factory (sale to distributors or dealers).

WARRANTY: VALIDITY

Warranty in countries with a customer service organisation

- The warranty covers the replacement or repair of faulty parts that have been proven defective in terms of material, manufacture and/or assembly.
- **DIECI** reserves the right to judge whether to repair or to replace defective parts.
- **DIECI** shall respond to claims using the means and methods it deems most appropriate.

DIECI shall be responsible for:

- The materials used.
- Labour.
- Travel and accommodation expenses.

The customer shall be responsible for:

- Packing and shipping costs for spare parts
- Any other possible expenses not listed under those for which **DIECI** is liable.

Warranty in countries without a customer service organisation

- The warranty consists exclusively of the free supply (ex works from the **DIECI** factory), of replacements for parts which can no longer be used because proven to be made of faulty material or due to faulty manufacture and/or assembly.

Examination of replaced faulty parts

- Before acknowledging the warranty, **DIECI** may ask for any faulty parts replaced during repairs to be returned (**DIECI** shall cover shipping costs).

Additional warranty for repairs and replacement parts

- Any repairs carried out whether covered by the warranty or not, and any spare parts replaced during repairs, are guaranteed for 3 months from the date of repair or installation if the original guarantee has expired.

WARRANTY: REQUEST FOR REPAIRS UNDER GUARANTEE

Warranty: reporting a fault or a faulty part

- The fault must be reported by the end user, dealer, distributor, retailer or by an authorised repair shop and must be sent directly to the **DIECI** customer service, within 8 days of the occurrence of the malfunction.

The report must include a clear description of the fault and exact machine specifications (type, model and serial number). The specifications can be found on the machine in the positions indicated in the USE AND MAINTENANCE MANUAL.

Compulsory machine immobilisation

- If there is a risk that the fault may jeopardise safety and accident prevention or may cause further damage, it is forbidden to use the machine until it has been repaired and tested.

Warranty: exclusion from the warranty

The following conditions and parts are not covered by the warranty:

- Components subject to wear or deterioration due to prolonged use: the clutch, belts, brake pads, sliding blocks, rollers, oils and fluids, filters, etc.
- Electrical systems and components.
- Damage caused by the weather, natural disasters, acts of vandalism, etc.
- Any other malfunction not due to an ascertained original fault or for which **DIECI** cannot be held liable.

The following parts are also not covered by this warranty; they are covered by the warranty provided by the relative manufacturers:

- Diesel engine
- Axles and reduction gears
- Pumps and hydraulic engines
- Tyres.

Application of the aforesaid warranties shall be managed by **DIECI**.

Any modification made to the machine requires a new test to verify conformity with directive 98/37 "CE"; this procedure also applies in the case of repairs with non-original spare parts.

In case of any disputes, the Court of Reggio Emilia - ITALY- shall be recognised as the competent authority.

REASONS FOR NON-EFFECT, NON-ACKNOWLEDGEMENT OR TERMINATION OF THE WARRANTY

Warranty: non-acknowledgement

The warranty is not acknowledged:

- If the fault is not reported in the prescribed way and within the established expiry.
- If there is a failure to return any faulty parts replaced during repairs to **DIECI** as requested.
- If the machine is not immobilised; the warranty shall not be acknowledged for any damage caused by the failure to comply with this requirement.

Warranty: termination

The guarantee is terminated:

- If the purchaser does not fulfil payment obligations according to contract.
- If any damage is caused by carelessness, negligence, or by any use that does not comply with the specifications in the use and maintenance manual (incorrect manoeuvres, overloading, use of incorrect fuel, poor maintenance*, failure to use warning signals, etc.).
- If the malfunction is due to applications, attachments, modifications or repair work not authorised by **DIECI** or carried out using faulty spare parts. (For this reason, we recommend always using original spare parts).

* For "recommended routine maintenance" refer to the USE AND MAINTENANCE MANUAL.

Final terms

- In case of non-effect, non-acknowledgement and termination of the warranty, the purchaser shall in no circumstance be granted annulment of the contract, payment of damages, or an extension of the warranty.
- Any warranty conditions other than those listed above must be agreed in writing and signed by both parties.

IDENTIFYING YOUR MACHINE

MACHINE MODELS

- The Manufacturer offers a range of similar machines with different technical specifications and performances.
- When consulting any table or diagram in this manual or on the machine itself, always refer to the model code number for your machine.

Samson, Icarus, Runner, Zeus. TELEHANDLERS

LIABILITY

- The machines are manufactured in compliance with the EEC regulations in effect when the machine was made available for purchase.
- Failure to observe the use and safety regulations or using the machine in less than perfect working condition may cause an accident punishable by law.
- The Manufacturer shall not be held liable for any damage to persons, things or animals caused by improper use of this machine or by any unauthorised structural modification, application or transformation.
- The Manufacturer reserves the right to carry out any possible modifications to the machine for technical or commercial reasons without notice.

IDENTIFYING THE TELEHANDLER

The machine can be identified by the serial number punch marked on the front of the chassis and inside the cab. In addition to this, the engine has its own serial number punch marked on its block.

To ensure prompt and efficient service when ordering spare parts or when requesting information or technical explanations, always give the engine and chassis serial number.

Chassis serial number

Engine serial number

Cab serial number

Gear box serial number

Differential axles serial number

Type of vehicle

Owner/ Operator

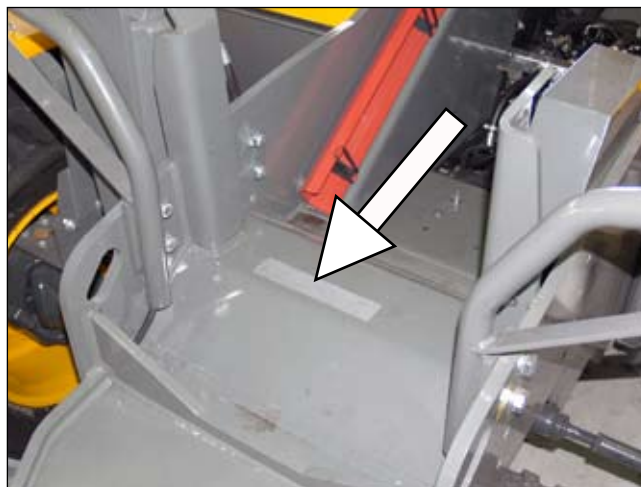
Address of Dealer or agent

Delivery date

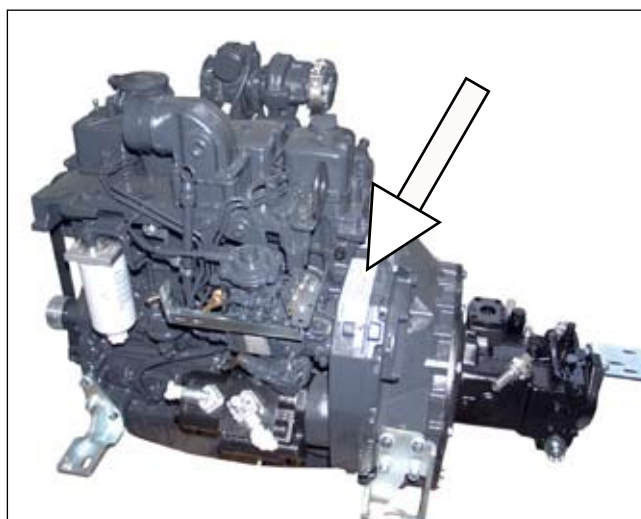
Warranty expiry date

NOTE:

The telehandlers commercially known as Samson, Icarus, Runner, Zeus are stamped with a type-approval code (see the first four numbers stamped on the chassis)



Chassis type and serial number



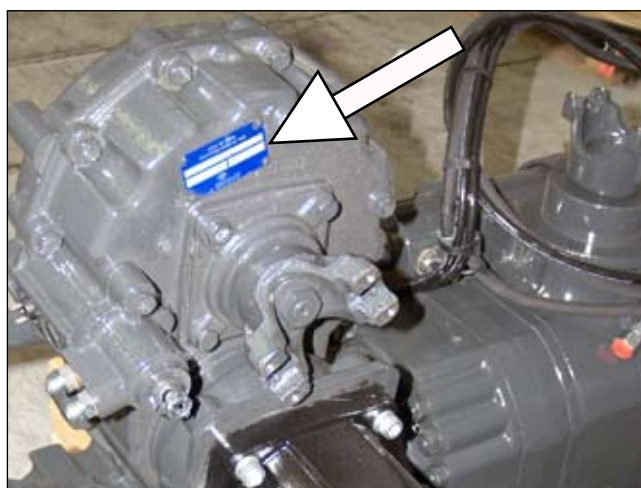
Engine serial number



Axle serial numbers



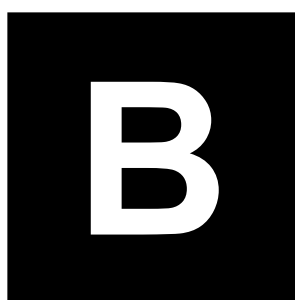
Fundamental data - cab plate



Gear serial number



SAFETY REGULATIONS






ACKNOWLEDGING SAFETY REGULATIONS

This is the "POTENTIAL HAZARD WARNING" SYMBOL.



Wherever this symbol appears "" appears, on the vehicle or in this manual, you must take care against potential damage or injury to the vehicle, other equipment, or people. Follow all recommended precautions and observe regulations for safe use and maintenance.

UNDERSTANDING WARNING NOTICES

In this manual certain terms are used to indicate different level of risk, including:



Indicates a situation of potential danger for the vehicle's operator or other people directly involved in its operation.



Indicates a situation of imminent danger which, if not averted, may cause damage to the vehicle and to the safety of the operator or others directly involved.



indicates a situation of imminent danger which, if not averted, may cause damage to the vehicle.



indicates strictly prohibited actions or things that are dangerous to personnel

The above-mentioned words are always accompanied by the corresponding potential hazard warning symbol.

- NOTE -

indicates an additional explanation for a given piece of information.

Carefully read the safety regulations given and follow all recommended precautions in order to avoid potential risks and safeguard your health and safety.

The "potential hazard" symbol and the "warning notices" have been included to highlight situations that DIECI feels are of particular importance.

However, this manual must be read completely and understood. If in doubt, contact the nearest agent or dealer.