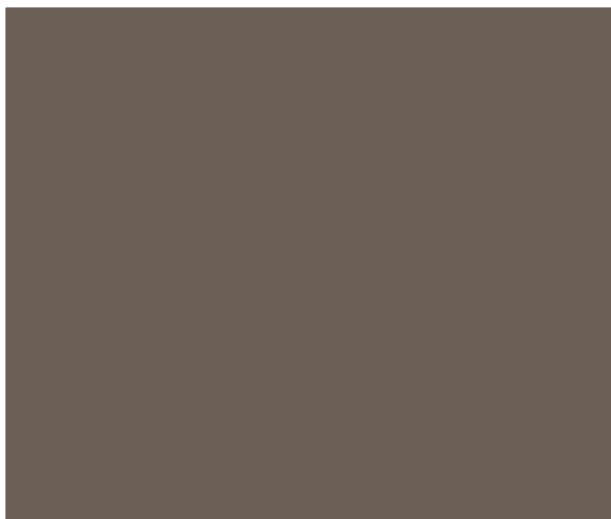
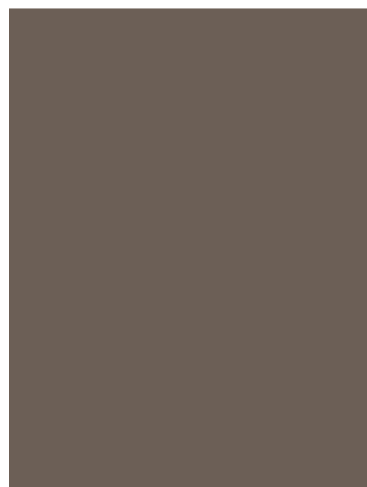


**GEHL**

Form No.  
913282  
Revision B  
September  
2007

# TD 4L2009

## Deutz Engine



# Parts Manual

---

**NOTE:** *This parts manual identifies both standard and optional features for this model. Depending on the features of the machine, some of the items identified in the parts lists may, or may not be included with your machine.*

---

The Table of Contents pages list the page locations of various component groups on the machine.

When ordering service parts, specify the part number, full description, quantity required, and the engine model and serial number.

Model and serial number for this engine are stamped on a plate located on the top of the valve cover. The following illustrations show the



location of the model and serial number.

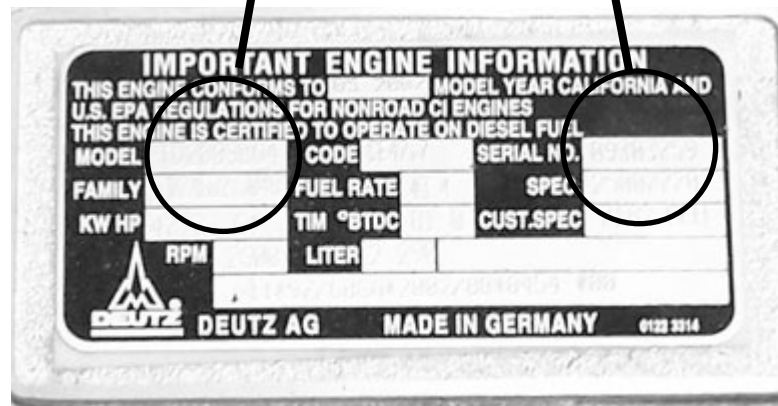
“Right” and “left” are determined from a position sitting on the seat and facing forward.

GEHL Company reserves the right to make changes or improvements in the design or construction of any part of the unit without incurring the obligation to install such changes on any unit previously delivered.

Grease fittings and common attaching hardware, such as cotter pins, set screws, woodruff keys, screws and nuts are included in the parts list, indented below the part they are associated with, but NOT illustrated, except where a particular routing or special fastening arrangement must be maintained. The hardware listed is for mounting purposes and is NOT included when the part is ordered for replacement. Standard attaching hardware torque values are provided on the inside back cover. Unless otherwise specified, all capscrews are Grade 5, cadmium or zinc plated; hexagon nuts for Grade 5 capscrews or bolts are Grade 5.

Model

Serial Number



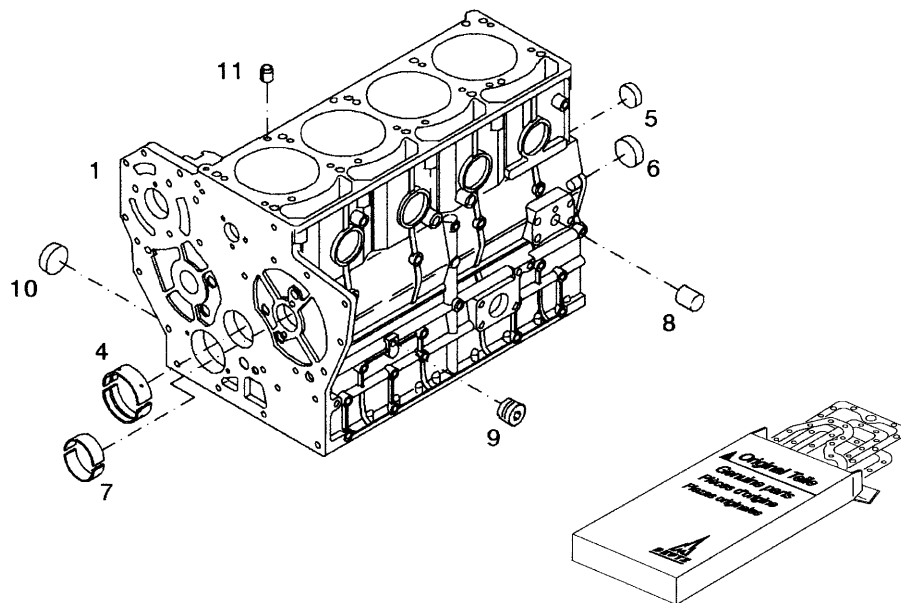
---

Engine Block, Plugs, and Gasket Set . . . . .	2
Oil Pan . . . . .	3
Dipstick . . . . .	4
Front Housing . . . . .	5
Front Housing Cover . . . . .	6
Oil Pump . . . . .	7
Oil Pump Suction Pipe . . . . .	8
Idler Gear . . . . .	9
Camshaft . . . . .	10
Crankshaft . . . . .	11
Connecting Rod . . . . .	12
Piston . . . . .	13
Cylinder Head . . . . .	14
Valve Train . . . . .	15
Fuel Injector . . . . .	16
Valve Cover . . . . .	17
Fuel Injector Pump . . . . .	18
Fuel Injector Pump Drive . . . . .	19
Fuel Supply Pump . . . . .	20
Fuel Filter Group . . . . .	21
Fuel Lines (High Pressure) . . . . .	22
Fuel Lines (Supply and Return) . . . . .	23
Intake Manifold . . . . .	24
Oil Separator . . . . .	25
Radiator and Hoses . . . . .	26
Water Pump . . . . .	27
Fan . . . . .	28
Oil Cooler . . . . .	29
Exhaust Manifold . . . . .	30
Exhaust Heat Shield . . . . .	31
Turbocharger and Exhaust Adapter . . . . .	32
Turbocharger Intake Pipe and Oil Lines . . . . .	33
Flywheel Housing . . . . .	34
Flywheel . . . . .	35
Starter . . . . .	36
Glow Plug . . . . .	37
Alternator . . . . .	38
Electrical Senders and Block Heater . . . . .	40
Numerical Index . . . . .	41

# Engine

# Deutz TD 4L2009

## Engine Block, Plugs and Gasket Set



Ref. No.	Part No.	Description	Qty. Req.	Ref. No.	Part No.	Description	Qty. Req.
01	105315	ENGINE BLOCK .....	1	08	105316	PLUG .....	6
04	105312	MAIN BEARING .....	1	09	105496	PLUG .....	1
05	105397	PLUG .....	1	10	105396	FREEZE PLUG .....	1
06	105318	PLUG .....	5	11	105399	STRAIGHT PIN .....	2
07	105308	CAMSHAFT BEARING .....	1	12	105249	GASKET SET (COMPLETE).....	1