

Form No.
917115

Rev. B
11/05

Deutz Engines

F3M 1011F

BF3M 1011F

F4M 1011F

BF4M 1011F

Used In:

SL4635, SL4835, SL5635, SL6635 Skid-Steer Loaders



Engine Service Parts Manual

GEHL[®]

Introduction

This manual covers F3M 1011F and BF3M 1011F engines used in SL4635 and SL4835 skid-steer loaders and F4M 1011F and BF4M 1011F engines used in SL5635 and SL6635 skid-steer loaders. When ordering service parts, specify the correct part number, full description, quantity required, and the engine model number and serial number (located on a plate on the valve mechanical cover).

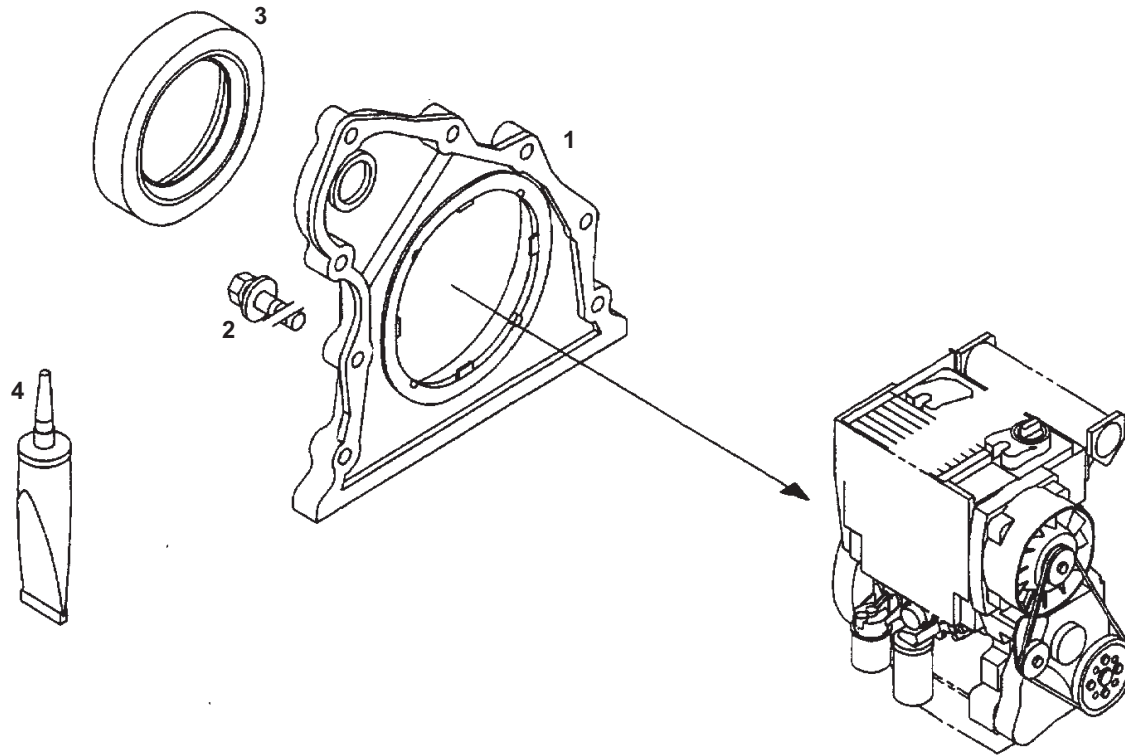
Items shown that do not have a part number are shown for reference purposes only and are not available for purchase separately.

Use only genuine original equipment manufacturer service parts. All service parts should be obtained from or ordered through your Gehl® dealer.

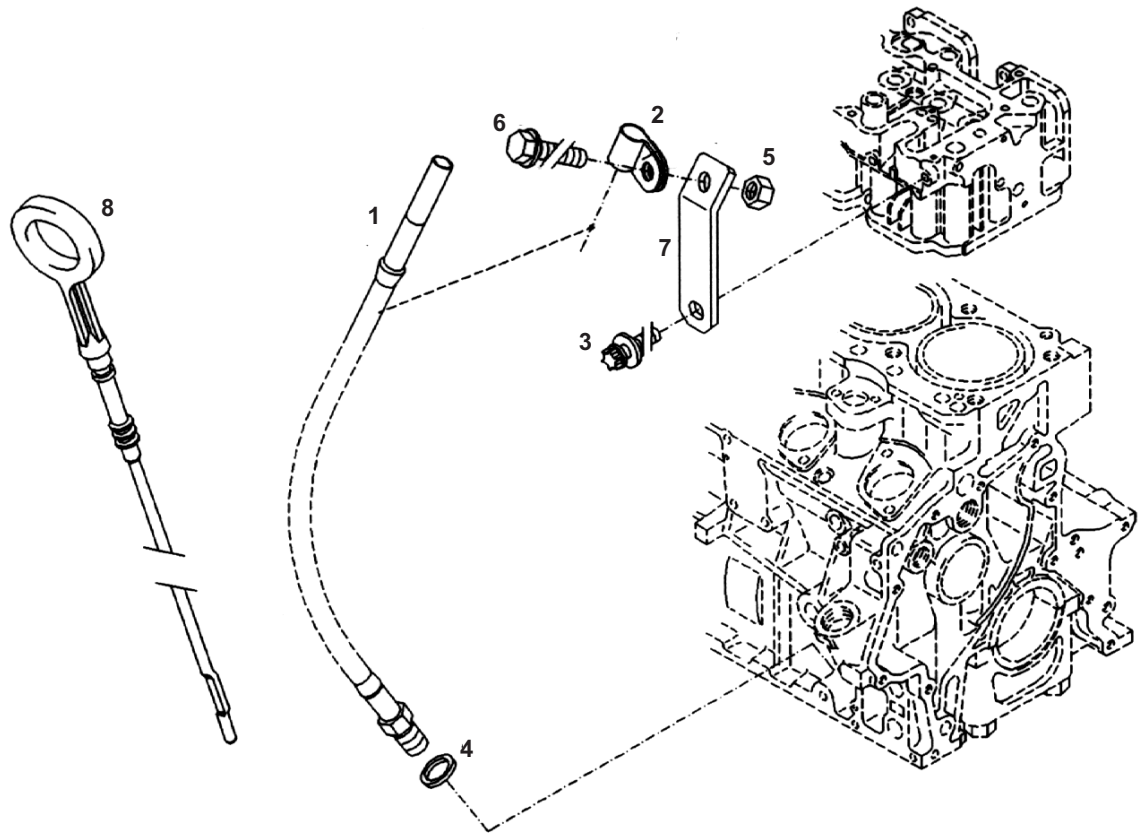
Gehl® Company reserves the right to make changes or improvements in the design or construction of any part of the unit without incurring the obligation to install such changes on any previously delivered units.

Table of Contents

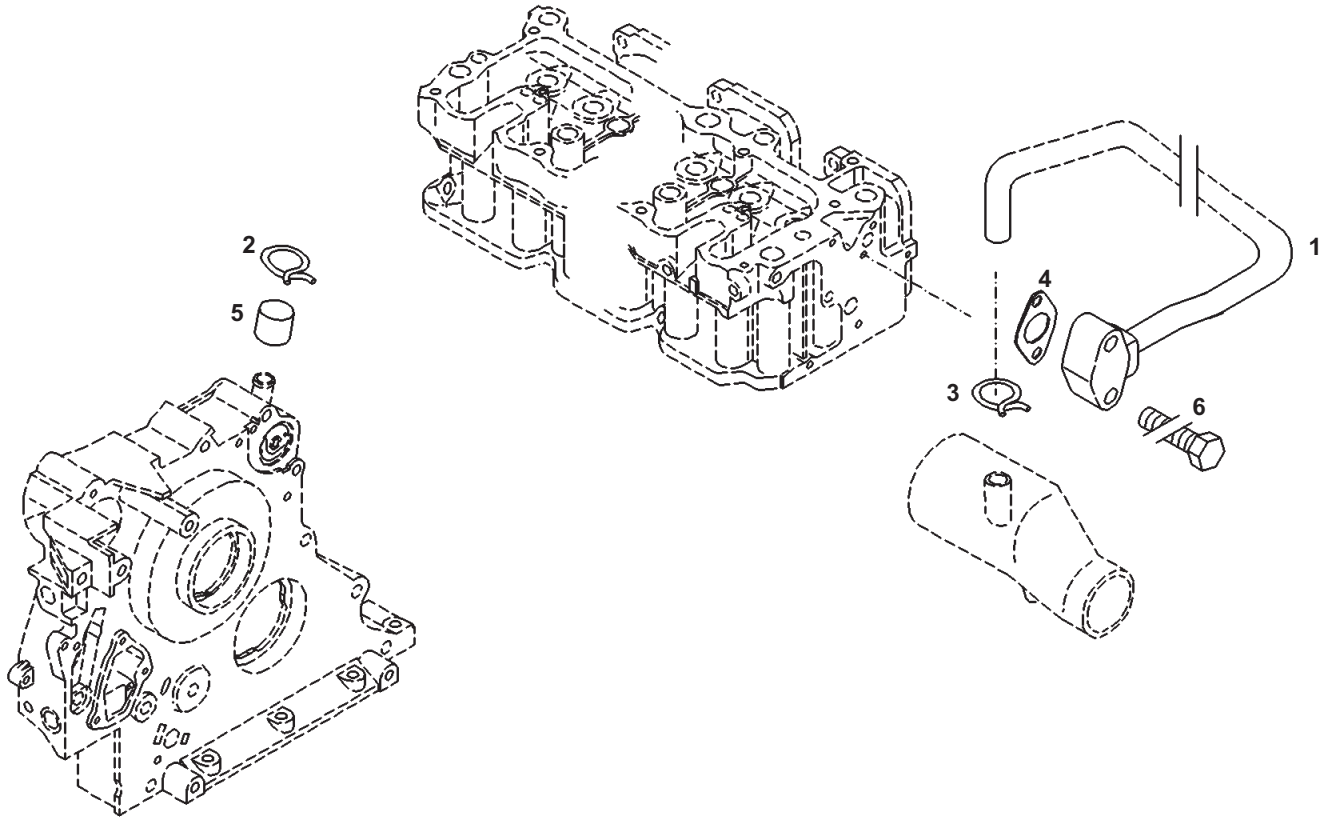
Introduction	i	FUEL LINE	36
REAR END COVER	1	FUEL FILTER	37
DIPSTICK & DIPSTICK GUIDE	2	HIGH PRESSURE PIPE	38
CRANKCASE BREATHER	3	OVERFLOW LINE	39
CAP	4	SUCTION PIPE FLANGE	40
ENGINE BLOCK	5	SUCTION PIPE	41
OIL PAN	6	INTAKE MANIFOLD	42
CRANKSHAFT ACCESSORIES	7	TURBOCHARGER	43
CRANKSHAFT	8	CHARGE AIR PIPE	44
POWER TAKE-OFF	9	CHARGE AIR ELBOW	45
COVER PLATE	10	TRANSFER PIPE	46
FLYWHEEL	11	AIR FILTER FITMENT	47
CONNECTING ROD	12	GLOW PLUG	48
PISTON	13	BUFFER SPRING	49
FILLER CAP	14	TORQUE CAPSULE	50
CYLINDER HEAD FASTENINGS	15	FRONT COVER/GOVERNOR	51
CYLINDER HEAD	16	CONTROL ROD	53
VALVE MECHANICAL COVER	17	NARROW V-BELT	54
CAMSHAFT DRIVE	18	FAN SUPPORT	55
CAMSHAFT	19	ADAPTER HOUSING	56
PROTECTION HOOD & FASTENINGS	20	AIR COMPRESSOR	57
ROCKER ARM BRACKET	21	STARTER	58
VALVE DRIVE	22	ALTERNATOR	59
LUBRICATION OIL PUMP	23	ALTERNATOR BRACKET	60
OIL FILTER & FASTENINGS	24	ALTERNATOR FASTENINGS	61
LUBRICATION OIL LINE	25	COOLING AIR BAFFLE	62
OIL SUCTION LINE	26	OIL PRESSURE SWITCH	63
OIL RETURN LINE	27	TEMPERATURE TRANSMITTER	64
HEATER CONNECTION	28	EXHAUST MANIFOLD	65
RADIATOR CONNECTION	29	CONNECTING PIPE	67
SCREW PLUG	30	CONTROL UNIT	68
FUEL INJECTOR PUMP	31	SHUTDOWN DEVICE	69
FUEL INJECTOR	32	GASKET SET	70
FUEL SUPPLY PUMP	35	INDEX	71



Ref No.	Part No.	Description	Quantity
1	133390	COVER/REAR END	1
2	133204	BOLT/HEX 8X 30MM CLASS 8.8	8
3	133387	SEAL/ROTATION SHAFT LIP	1
4	133100	COMPOUND/PACKING 250 ML	1



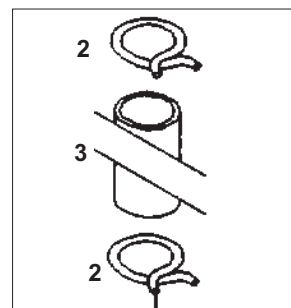
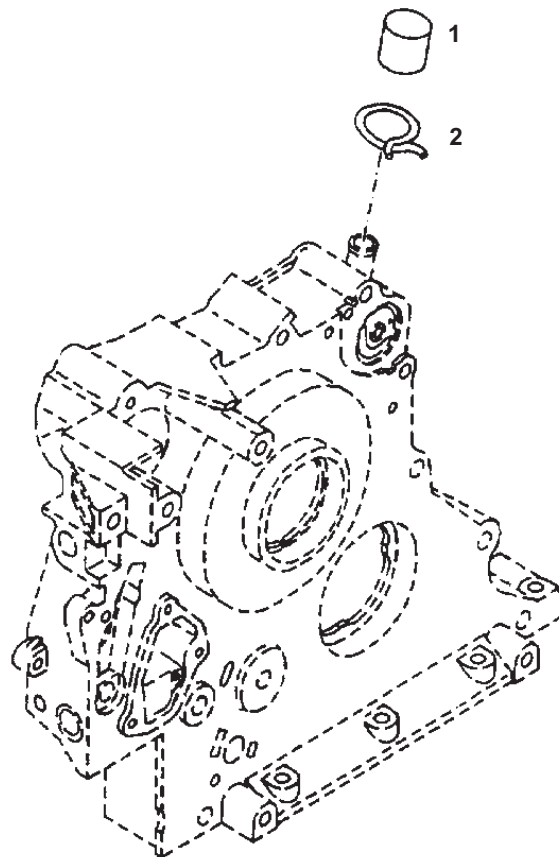
Ref No.	Part No.	Description	Quantity	
			F3M/BF3M	F4M/BF4M
1	133555	TUBE/GUIDE	1	-
	187192	TUBE/GUIDE	-	1
2	133556	CLAMP/PIPE	1	1
3	187233	BOLT/TORX HEAD	1	1
4	133134	RING/SEALING	1	1
5	187267	NUT/HEX	1	1
6	187227	BOLT/HEX	1	1
7	133561	BRACKET	1	1
8	135503	DIPSTICK	1	-
	133562	DIPSTICK	-	1



Ref No.	Part No.	Description	Quantity BF4M
1	133552	PIPE/BREATHER	1
2	133202	CLIP/HOSE	1
3	133212	CLIP/HOSE	1
4	133553	GASKET	1
5	133482	CAP	1
6	187221	BOLT/HEX	2

1011F DEUTZ ENGINE

CAP



Turbo Engines Only

Ref No.	Part No.	Description	Quantity	
			F3M/F4M	BF3M
1	135520	CAP	1	-
	133518	PLUG	-	1
2	133202	CLIP/HOSE	1	2
3	133481	HOSE 50MM	-	1