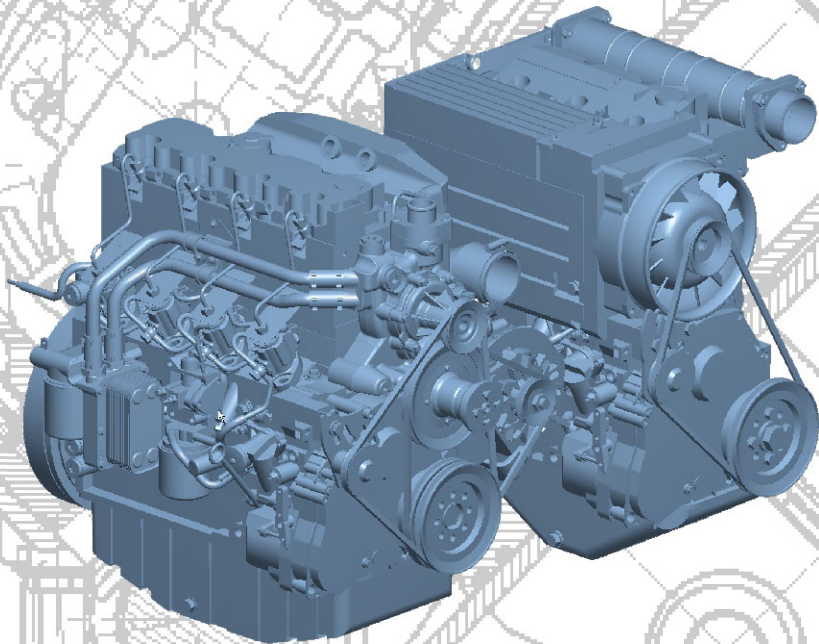


Operation Manual
D/TD/TCD 2011



Notes

Notes

- This engine is defined exclusively for purpose according to the scope of delivery and built by the equipment manufacturer (use for the intended purpose). Any other use above and beyond this will be considered as misuse. The manufacturer will not accept any liability for damages resulting from this. The user bears the sole risk.
- Use for the intended purpose also includes observance of the operating, maintenance and repair conditions specified by the manufacturer. The engine should only be operated, serviced and repaired by personnel trained in its use and the hazards involved.

The pertinent rules for the prevention of accidents and other generally recognised safety and industrial medicine rules must be observed.
- When the engine is running there is a danger of injury caused by:
 - rotating and hot components
 - on motors with external ignition (high electrical voltage). Contact must be avoided!
- Unauthorised engine modifications will invalidate any liability claims against the manufacturer for resultant damage.
- Equally, manipulations to the injection and control system can affect the engine's performance and the exhaust characteristics. Adherence to legislation on pollution can no longer be guaranteed under such conditions.
- Do not change the cooling air feed area to the blower of fan. An unobstructed cooling air supply must be guaranteed.

The manufacturer will accept no liability for damage resulting from this.
- When carrying out maintenance work on the en-

gine, the use of DEUTZ original parts is prescribed. These are specially designed for your engine and guarantee perfect operation.

Non-compliance results in the expiry of the warranty!

Maintenance/cleaning work on the engine may only be carried out when the engine is not running and has cooled down.

When doing this, make sure that the electrical system is switched off (remove ignition key).

The specifications for accident prevention with electrical systems (e.g. VDE-0100/-0101/-0104/-0105 Electrical protective measures against dangerous contact voltages) must be observed.

Cover all electrical components tightly when cleaning with liquids.

- Do not work on the fuel system while the engine is running - **Danger to life!**

Wait for the pressure to drop after the engine has come to a standstill (in engines with DEUTZ Common Rail about 5 minutes, otherwise 1 minute) because the system is under high pressure - **Danger to life!**

During the first trial run do not stand in the danger area of the engine.

Danger due to high pressure in case of leaks - **Danger to life!**

- In case of leaks immediately contact workshop.
- When working on the fuel system, make sure that the engine is not started inadvertently during repairs - **Danger to life!**

Dear customer,

Congratulations on the purchase of your DEUTZ engine.

DEUTZ air/liquid-cooled engines are developed for a broad spectrum of applications. Consequently, a wide range of variants is offered to meet the requirements of specific cases.

The engine is equipped accordingly for the particular installation situation, i.e. not all the components described in the operating manual are installed in your engine.

We have endeavoured to highlight any differences so that you will be able to locate the operating and maintenance instructions applicable to your engine more quickly and easily.

Please make sure that this operating manual is available to everyone involved in the operation, maintenance and repair of the engine and that they have understood the contents.

If you have any queries, please contact us, we'll be happy to advise you.

Sincerely,
DEUTZ AG

Engine serial number

Please enter the engine serial number here. This will simplify the handling of customer service, repair and spare parts queries.

--	--	--	--	--	--	--	--

Notes

We reserve the right to make technical changes to the descriptions and data in this operating manual in the interest of further development of the engines.

This document may only be reprinted and reproduced, even in part, with our express permission.

Contents

Notes	2	Suction system	47
Foreword	3	Belt drives	49
1 General	5	Setting work	51
2 Engine description	7	Electrical system	53
Type	7	7 Faults	55
Engine illustrations	9	Fault table	55
Lubricating oil schematic	13	Engine management	60
Fuel schematic	18	8 Transport and storage	62
Coolant schematic	19	Transport	62
Exhaust gas recirculation	21	Protecting the engine against corrosion	63
Electrics/Electronics	23	9 Technical data	65
3 Operation	24	Engine and setting data	65
Ambient conditions	24	Tools	70
Initial commissioning	25		
Start procedure	27		
Operation monitoring	28		
Stop procedure	30		
4 Operating media	31		
Lubricating oil	31		
Fuel	33		
Coolant	34		
5 Maintenance	35		
Maintenance schedule	35		
6 Care and maintenance work	38		
Lubricating oil system	38		
Fuel system	40		
Cooling system	44		
Engine cleaning	46		

DEUTZ diesel engines

DEUTZ diesel engines are the product of years of research and development. Profound know-how combined with high quality requirements are the guarantee for the production of engines with a long life, high reliability levels and low fuel consumption. Obviously the high requirements for the protection of the environment are also met.

Safety precautions when the engine is running

Maintenance work or repairs may only be performed on the shut-down engine. Make sure that the engine cannot be started inadvertently - **Danger of accident!**

After repair work: Check that all guards have been replaced and that all tools have been removed from the engine.

Observe industrial safety regulations when running the engine in an enclosed space or underground.

When working on the running engine, work clothing must be close fitting.

Never fill the fuel tank while the engine is running.

Service and Maintenance

Service and maintenance are also decisive for whether the engine satisfactorily meets the set demands. Recommended service intervals must therefore be observed and service and maintenance work must be carried out conscientiously.

Special care should be taken under abnormally demanding operating conditions.

Original DEUTZ parts

Original DEUTZ parts are subject to the same strict quality demands as the DEUTZ engines. Further de-

velopments for improving the engines are also introduced in the original DEUTZ parts of course. Only the use of original DEUTZ parts manufactured according to the state-of-the-art can guarantee perfect functioning and high reliability.

DEUTZ Xchange components

DEUTZ replacement parts are a low-cost alternative. Of course, the quality standards here are just as high as for new parts. DEUTZ replacement parts are equal to the original DEUTZ parts in function and reliability.

Asbestos

The gaskets used in this engine contain no asbestos. Please use the appropriate original DEUTZ parts for maintenance and repair work.

Service

We want to preserve the high performance of our engines, and with it the confidence and satisfaction of our customers. We are therefore represented worldwide by a network of service branches.

The DEUTZ name does not merely stand for engines that are the products of extensive development work, DEUTZ also stands for complete service packages that ensure optimum operation of our engines, and for customer services operations that you can count on.

Please contact your DEUTZ-partner in case of malfunctions and spare parts inquiries. Our specially trained personnel will ensure fast, professional repairs using original DEUTZ spare parts in case of damage.

The DEUTZ home page gives you a continuously up-to-date overview of the service partners in your vicin-

ity with notes on product responsibilities and services. Or you can use another fast, convenient way via the Internet under www.deutzshop.de. The DEUTZ P@rts Online parts catalogue gives you a direct contact to your nearest local service partner.

California Proposition 65 Warning

Diesel engines and some of its constituents are known to the State of California to cause cancer, birth defects and other reproductive harm.

Masthead

DEUTZ AG

Ottostraße 1

51149 Köln

Germany

Phone: +49 (0) 221-822-0

Fax: +49 (0) 221-822-5850

www.deutz.com

E-Mail: info@deutz.com

Danger



This symbol is used for all safety instructions which, if not observed, present a direct danger to life and limb for the person involved. Observe these carefully. The attention of operating personnel should be drawn to these safety instructions. Furthermore, the legislation for "general regulations for safety and the prevention of accidents" must be observed.

Caution



This symbol indicates a danger to the part and engine. The relevant instructions must be observed, failure to do so can lead to destruction of the part and the engine.

Notes



This symbol accompanies notes of a general kind.

Engine type designation

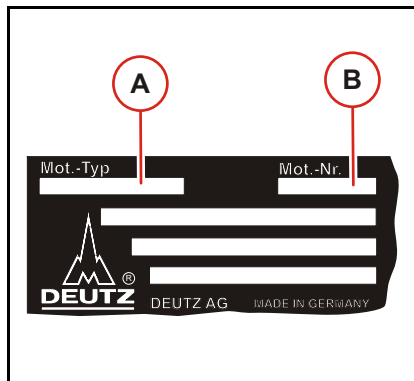
This manual covers the following engine types		
D 2011 L02 i	D 2011 L02 o	D 2011 L04 w
D 2011 L03 i	D 2011 L03 o	TD 2011 L04 w
D 2011 L04 i	D 2011 L04 o	TCD 2011 L04 w
TD 2011 L04 i	TD 2011 L04 o	

TCD	
T	Exhaust gas turbocharger
C	Charge air cooler
D	Diesel

2011	
2011	Series

L02/L03/L04	
L	in series
02	No. of cylinders
03	No. of cylinders
04	No. of cylinders

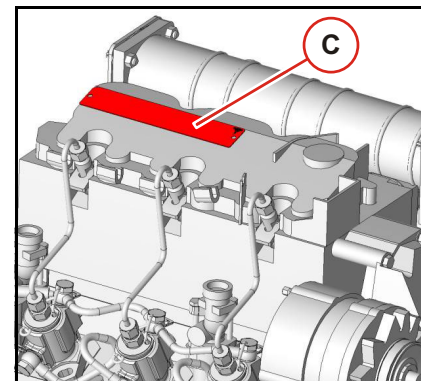
i/o/w	
i	oil-cooled (integrated cooler)
o	oil-cooled
w	water-cooled



Rating plate

The type (A), engine number (B) and performance data are stamped on the rating plate.

The engine type and number must be stated when purchasing spare parts.



Location of the rating plate

The rating plate (C) is fixed to the cylinder head cover or the crankcase.