

FICHE 1/A



## INTRODUCTION

SECTION NAME	GRID
HOW TO USE THIS FICHE .....	B 2
BRIEF SPECIFICATIONS .....	B 3
HOW TO INTERPRET THE TEXT .....	B 6
GROUP SYMBOLS AND ABBREVIATIONS .....	B 8
CAR NUMBER AND ENGINE NUMBER .....	R 12
MODEL PHOTOGRAPH .....	R 13

## MASTER INDEX

GROUP NAME	
INTRODUCTION .....	1-B1
ENGINE NO. 1 (SEC. 1 TO SEC. 130) .....	1-D1
ENGINE NO. 2 (SEC. 131 TO SEC. 30) .....	2-B1
ELECTRICAL .....	2-F1
POWER TRAIN .....	3-B1
AXLE .....	3-J1
BRAKE .....	4-B1
STEERING .....	4-F1
BODY (SEDAN) NO. 1 (SEC. 77 TO SEC. 89) .....	4-H1
BODY (SEDAN) NO. 2 (SEC. 90 TO SEC. 106) .....	5-B1
BODY (WAGON) NO. 3 (SEC. 108 TO SEC. 121) .....	5-I1
BODY (WAGON) NO. 4 (SEC. 122 TO SEC. 133) .....	6-B1
MISCELLANEOUS .....	6-F1
ALPHABETICAL PART NAME INDEX .....	6-I1
PART NUMBER INDEX .....	6-J1



### HOW TO USE THIS FICHE

Cases Steps	To find a part number when only the part name is known, proceed as follows:	To locate the detailed description of a part number already known, proceed as follows:	To find a part number or to locate a description when major system group of the part is known, proceed as follows:
1	Read the title strips of the fiches and select the last fiche of the appropriate catalog.		Find the appropriate fiche and grid number by referring to the major system groups on the title strip at the top of each fiche.
2	Insert it in the microreader and refer to its Fiche Index in Grid No. N-13 (lowest right corner).		
3	In ALPHABETICAL PART NAME INDEX find the Grid No(s), which contains the detailed index, and move to that grid.	In PART NUMBER INDEX, find the Grid No. which contains the detailed index, and move to that grid.	Insert it in the microreader and refer to the Section Index in the grid number you have found in the title.
4	Search for the part name in the index and find the corresponding Section No.	Search for the part number in the index and find the corresponding Section No.	In the Section Index, find the Grid number of the section you want, and move to the grid.
5	Referring to the "SECTION NO. TO LOCATION" Table on the left hand side, find the location (Fiche No. and Grid No.), and move to the location.		
6	You can find the part number in the text and check it with illustrations and other notes by means of the Key Number.		
7	If the section is composed of several frames, move to right grid until you find the part in the image.		
8	Check the part number in the concerned Spare Parts Bulletin and correct the information, if needed.		

### MASTER INDEX

GROUP NAME	
INTRODUCTION .....	1-B1
ENGINE NO. 1 (SEC. 1 TO SEC. 130) .....	1-D1
ENGINE NO. 2 (SEC. 131 TO SEC. 30) .....	2-B1
ELECTRICAL .....	2-F1
POWER TRAIN .....	3-B1
AXLE .....	3-F1
BRAKE .....	4-B1
STEERING .....	4-F1
BODY (SEDAN) NO. 1 (SEC. 77 TO SEC. 98) .....	4-H1
BODY (SEDAN) NO. 2 (SEC. 99 TO SEC. 105) .....	5-B1
BODY (WAGON) NO. 3 (SEC. 106 TO SEC. 121) .....	5-F1
BODY (WAGON) NO. 4 (SEC. 122 TO SEC. 133) .....	6-B1
MISCELLANEOUS .....	6-F1
ALPHABETICAL PART NAME INDEX .....	6-I1
PART NUMBER INDEX .....	6-J1

B3

## BRIEF SPECIFICATIONS

## DIMENSIONS AND WEIGHT:

MODELS	(PXL)S10(V)UT	(PXL)S10(C)XT(A)	(PXL)S10(U)TK	W(PXL)S10(U)T(A)	RPLS10(U)T
Overall length	4,070 mm (160.2 in)	4,220 mm (166.2 in)	4,120 mm (162.2 in)	3,145 mm (123.2 in)	4,070 mm (160.2 in)
Overall width	1,560 mm (61.4 in)	1,560 mm (61.4 in)	1,560 mm (61.4 in)	1,560 mm (61.4 in)	1,560 mm (61.4 in)
Overall height	1,420 mm (55.9 in)	1,420 mm (55.9 in)	1,420 mm (55.9 in)	1,435 mm (56.5 in)	1,420 mm (55.9 in)
Wheelbase	2,420 mm (95.3 in)	2,420 mm (95.3 in)	2,420 mm (95.3 in)	2,420 mm (95.3 in)	2,420 mm (95.3 in)
Tread front	1,270 mm (50.0 in)	1,270 mm (50.0 in)	1,270 mm (50.0 in)	1,275 mm (50.2 in)	1,270 mm (50.0 in)
Tread rear	1,270 mm (50.0 in)	1,270 mm (50.0 in)	1,270 mm (50.0 in)	1,260 mm (49.6 in)	1,270 mm (50.0 in)
Vehicle weight	880 kg (1,940 lb) [(L)S10(U)] 885 kg (1,951 lb) [(PXL)S10(U)] 890 kg (1,962 lb) [(PXL)S10(U)T]	905 kg (1,995 lb) [(L)S10(U)] 910 kg (2,006 lb) [(PXL)S10(U)] 915 kg (2,017 lb) [(PXL)S10(U)T] 925 kg (2,061 lb) [(PXL)S10(U)A]	915 kg (2,017 lb) [(PXL)S10(U)TK]	940 kg (2,072 lb) [W(PXL)S10(U)] 945 kg (2,083 lb) [W(PXL)S10(U)T] 970 kg (2,138 lb) [W(PXL)S10(U)A]	925 kg (2,039 lb)
Seating capacity	5 persons	5 persons	5 persons	5 persons	5 persons

## MASTER INDEX

## GROUP NAME

INTRODUCTION .....	1-B1
ENGINE NO. 1 (SEC. 1 TO SEC. 130) .....	1-D1
ENGINE NO. 2 (SEC. 131 TO SEC. 39) .....	2-B1
ELECTRICAL .....	2-F1
POWER TRAIN .....	3-B1
AXLE .....	3-J1
BRAKE .....	4-B1
STEERING .....	4-F1
BODY (SEDAN) NO. 1 (SEC. 77 TO SEC. 99) .....	4-H1
BODY (SEDAN) NO. 2 (SEC. 100 TO SEC. 105) .....	5-B1
BODY (WAGON) NO. 3 (SEC. 106 TO SEC. 121) .....	5-I1
BODY (WAGON) NO. 4 (SEC. 122 TO SEC. 133) .....	6-B1
MISCELLANEOUS .....	6-F1
ALPHABETICAL PART NAME INDEX .....	6-I1
PART NUMBER INDEX .....	6-J1

B4

## ENGINE:

Model	510 Series	516 Series	P(L)S10(U)TK(SSS)
Design	L13 4 cyl. in line 4 cycle O.H.C. Gasoline	L16 4 cyl. in line 4 cycle O.H.C. Gasoline	L16 4 cyl. in line 4 cycle O.H.C. Gasoline SU CARB.
Bore	83.0 mm (3.27 in)	83.0 mm (3.27 in)	83.0 mm (3.27 in)
Stroke	59.9 mm (2.36 in)	73.3 mm (2.90 in)	73.3 mm (2.90 in)
Displacement	1,296 cc (79.1 cu.in)	1,595 cc (97.3 cu.in)	1,595 cc (97.3 cu.in)

**FUEL SYSTEM:** "HITACHI" dual barrel down draft type carburetor (variable venturi side draft type carburetor for P(L)S10(U)TK only); Mechanical type diaphragm pump; Paper element type air cleaner; Fuel tank capacity 45 L (11.9 U.S. gal.).

**LUBRICATION SYSTEM:** Pressure feed with full-flow type oil filter; Trochoid type pump; Oil capacity 4.6 L (1.22 U.S. gal.).

**IGNITION SYSTEM:** Coil and distributor with mechanical and vacuum control.

**COOLING SYSTEM:** Pressurized radiator with centrifugal pump; Pellet-type thermostat and fan; Cooling water capacity 6.4 L (1.69 U.S. gal.).

**ELECTRIC SYSTEM:** 12 volt, 40 AH or 50 AH battery; 30 AH alternator with regulator; 33 AH alternator for USA & CANADA 1 KW (1.4 HP) magnetic shift starter (negative earth); 60 AH battery (optional).

**TRANSMISSION:** 3 or 4 forward speeds and 1 reverse; All synchromesh on forward gears; 3-speed automatic transmission.

## TYPE AND APPLICATION:

T/M type	3-speed	4-speed		Automatic	
		Floor shift			
T/M control method	Remote control	Sedan	Wagon	Remote control (RW)	
Gear ratio	1st	3.261	3.382	3.657	2.39
	2nd	1.643	2.013	2.177	1.43
	3rd	1.000	1.312	1.149	1.00
	4th		1.000	1.000	
	Rev.	3.155	3.364	3.678	2.09
Applied model	(L)S10(S)(U) P(L)S10(S)(U) (L)S10U P(L)S10(U) W(P)L)S10(U)	P(L)S10(S)(U)T P(L)S10(U)T P(L)S10(U)TK P(L)S10UT R(P)L)S10SUT	W(P)L)S10(U)T W(P)L)S10UT	P(L)S10(U)A W(P)L)S10(U)A P(L)S10UA W(P)L)S10UA	

## FINAL GEARS HYPOID:

Gear ratio		Applied model
3.889	America	W(P)L)S10(U), W(P)L)S10(U)T, W(P)L)S10UT, W(P)L)S10(U)A, W(P)L)S10UA
3.900		P(L)S10(S)(U), P(L)S10(U), P(L)S10(U)A, P(L)S10(S)(U)T, P(L)S10(U)T, P(L)S10(U)TK, P(L)S10UT, R(P)L)S10SUT
3.700	Others	P(L)S10(S)(U)T, P(L)S10(U)T, P(L)S10(U)TK, W(P)L)S10(U)T
3.889		W(P)L)S10(U), W(P)L)S10(U)A
3.900		P(L)S10(S)(U), P(L)S10(U), P(L)S10(U)A
4.375		(L)S10(S)(U), L)S10(U)

## MASTER INDEX

GROUP NAME	
INTRODUCTION	1-01
ENGINE NO. 1 (SEC. 1 TO SEC. 130)	1-01
ENGINE NO. 2 (SEC. 131 TO SEC. 39)	2-01
ELECTRICAL	2-F1
POWER TRAIN	3-01
AXLE	3-J1
BRAKE	4-B1
STEERING	4-F1
BODY (SEDAN) NO. 1 (SEC. 77 TO SEC. 89)	4-H1
BODY (SEDAN) NO. 2 (SEC. 90 TO SEC. 106)	5-B1
BODY (WAGON) NO. 3 (SEC. 108 TO SEC. 121)	6-11
BODY (WAGON) NO. 4 (SEC. 122 TO SEC. 133)	6-01
MISCELLANEOUS	8-F1
ALPHABETICAL PART NAME INDEX	8-11
PART NUMBER INDEX	8-J1

B5

## MASTER INDEX

GROUP NAME	
INTRODUCTION .....	1-B1
ENGINE NO. 1 (SEC. 1 TO SEC. 130) .....	1-D1
ENGINE NO. 2 (SEC. 131 TO SEC. 39) .....	2-B1
ELECTRICAL .....	2-F1
POWER TRAIN .....	3-B1
AXLE .....	3-J1
BRAKE .....	4-B1
STEERING .....	4-F1
BODY (SEDAN) NO. 1 (SEC. 77 TO SEC. 89) .....	4-H1
BODY (SEDAN) NO. 2 (SEC. 90 TO SEC. 105) .....	5-B1
BODY (WAGON) NO. 3 (SEC. 106 TO SEC. 121) .....	5-I1
BODY (WAGON) NO. 4 (SEC. 122 TO SEC. 133) .....	6-B1
MISCELLANEOUS .....	6-F1
ALPHABETICAL PART NAME INDEX .....	6-I1
PART NUMBER INDEX .....	6-J1

**CLUTCH:** Single, dry disc with cushioning springs (510 series with L13 engine); Single, dry disc with diaphragm spring (P510 series with L16 engine). Diameter 200 mm (7.87 in).

**FRONT SUSPENSION:** Independent strut type with tension rod and stabilizer.

**REAR SUSPENSION:** Fully independent semi-trailing arm with coil springs and telescopic double acting shock absorbers.

**STEERING:** Right or left hand drive; Recirculating ball type gear, Ratio 15.0:1.

**BRAKES:** Hydraulic; Front two-leading shoe; Rear leading and trailing shoe; Brake drum dia. 228.6 mm (9.0 in). Parking brake mechanically operated on rear wheels only; Front disc brake [standard for PLS10(UTK), optional for other models].

**WHEELS AND TIRES:** Steel disc wheels; 5.60-13-4 PR tires.

**LAMPS:** Two dual head lights (sealed beam) with dipping; Two parking and turn signal lights; Two combined stop, tail and turn signal lights; Room light; Rear license light; Back-up lights; Side directional lights.

**INSTRUMENTS:** Speedometer; Fuel gauge; Water temperature gauge; Oil pressure warning light; Turn signal pilot lights; Main beam warning light; Parking brake warning light; On instrument panel, ignition and starter switch, lighting switch, choke control knob, windshield wiper switch, Four-way flasher switch (U.S.A. only), fresh air control lever and glove box.

**BODY WORKS:** Four-door sedan, Four-door station wagon, Five-seater with adjustable front seats; All steel body full upholstered with vinyl leather; Dual self-parking windshield wiper; Room light door switches on both sides; Turn signal lever with dimmer switch unit; Interior back mirror; Safety glass on all windows and doors; Two sunvisors; Ash trays, front and rear; Vinyl floor mat; Safety belt anchorages (front: 3 points, rear: lap); Fuel tank filler cap lock; Trunk floor mat; Moulding sill, Rear door pull handle; Full flow ventilator. Full height single lift gate; Vinyl mat on luggage floor, Rear-gate lock (for Wagon).

## EQUIPMENT APPLICATIONS.

Item	Standard	Deluxe	Wagon
Bumper over rider	opt	o	o
Drip channel moulding	x	o	o
Anti-rain glass	opt	opt	opt
White tire	opt	o	o
Large wheel cap	opt	o	o
Front door pull handle	o	x	x
Front arm rest	x	o	o
Rear arm rest	x	o	o
Package tray	x	o	o
Glove box lid lock	x	o	o
Spare wheel cover	opt	o	x
Trunk room mat	opt	o	o
Engine compartment light	x	o	o
Windshield washer	opt	o	o
Cigarette lighter	opt	o	o
Clock	opt	opt	opt

O ----- Standard equipment

X ----- Not available

Opt ----- Option

**OPTIONAL PARTS FOR ALL MODELS:** Outside back mirror (on fender or door); Tubeless tire; Heater; Radio; Cooler; Steering lock; Passing light (only left-hand drive); Anti wind-lift type wiper blades; 60 AH battery (NS0Z) for frigid zone; Carpet.

These specifications are subject to change without notice.



# HOW TO INTERPRET THE TEXT

FICHE 1/4

C10

SECTION No  
**3-4**

CYLINDER BLOCK

ENGINE FRONT VIEW

NOTE

MASTER INDEX

GROUP NAME	Location
INTRODUCTION	1-B1
ENGINE (L18)	1-C1
ENGINE (L20)	1-F1
ENGINE FITTING	1-11
ELECTRICAL	2-B1

ILLUSTRATION No 1-2

KEY NO.	PART NO.	DESCRIPTION	LEVEL	APPLIED MOD.	APPLIED DATE	FROM	UP TO	SUPERSEDED
1	11178-08180	KEY OIL PAN	10			05	16	07
2	11024-01570	WASHER OIL PAN	10					
3	11128-00700	FLY	10					
4	11171-01000	FLY	10					
5	11174-01800	FLY	10	110				
6	11174-00100	FLY	10					
7	08122-01482	BOLT WITH WASHER FITTING TO OIL PAN	10	110 THROUGH 1	0579	0578		
8	08122-01482	BOLT WITH WASHER FITTING TO OIL PAN	10	110 THROUGH 1	0579			
9	08122-01482	BOLT WITH WASHER FITTING TO OIL PAN	10					

## MASTER INDEX

GROUP NAME	Location
INTRODUCTION	1-B1
ENGINE NO. 1 (SEC. 1 TO SEC. 120)	1-D1
ENGINE NO. 2 (SEC. 124 TO SEC. 39)	2-B1
ELECTRICAL	2-F1
POWER TRAIN	3-B1
AXLE	3-J1
BRAKE	4-B1
STEERING	4-F1
BODY (SEDAN) NO. 1 (SEC. 77 TO SEC. 99)	4-H1
BODY (SEDAN) NO. 2 (SEC. 93 TO SEC. 105)	5-B1
BODY (WAGON) NO. 3 (SEC. 106 TO SEC. 121)	6-11
BODY (WAGON) NO. 4 (SEC. 122 TO SEC. 133)	6-B1
MISCELLANEOUS	6-F1
ALPHABETICAL PART NAME INDEX	8-11
PART NUMBER INDEX	8-J1

The following are explanations of each column in the text. A sample is given above.

① Grid Number

② Section No.

The section number and the text page are shown here.

Section No.      Text page

③ Section Title

④ Illustration Name

If certain section includes several illustrations, illustration name will be indicated here.

⑤ Illustration Number

If certain section includes several illustrations, illustration number will be indicated here.

⑥ Location

Fiche No.      Grid No.

⑦ S

When you place your orders, please notice the following two symbols in this column.

\* Non-available item or old item superseded by a new one.

# Conditional order item. Separate your orders from ordinary ones.

⑧ KEY NO.

The key numbers appear in numerical order corresponding to those in the illustration. If more than one part number is shown under the same key number, the part numbers should be arranged under different suffixes.

⑨ Level

The levels appear in four ranks from left to right showing the relations between assembly and components. The assemblies in higher levels include the components in lower levels.

⑩ PART NO.

The part number is shown in this column. It is as a rule ten digits.



FIGURE 1/3

**C10**

SECTION No. **3-4**

**CYLINDER BLOCK**

**ENGINE FRONT VIEW**

NOTE

ILLUSTRATION No 1/2

Q1	Q2	Q3	Q4	Q5	Q6	Q7
QTY	PART NO.	DESCRIPTION	APPLIED MODEL	APPLIED DATE	SUPERSEDED	
1	11121-21000	WASHER, OIL PAN		15	16	17
1	11121-21000	WASHER, OIL PAN		15	16	17
1	11121-21000	WASHER, OIL PAN		15	16	17
1	11121-21000	WASHER, OIL PAN		15	16	17
1	11121-21000	WASHER, OIL PAN		15	16	17
1	11121-21000	WASHER, OIL PAN		15	16	17
1	11121-21000	WASHER, OIL PAN		15	16	17
1	11121-21000	WASHER, OIL PAN		15	16	17
1	11121-21000	WASHER, OIL PAN		15	16	17
1	11121-21000	WASHER, OIL PAN		15	16	17

**MASTER INDEX**

GROUP NAME	GROUP SYMBOL
INTRODUCTION	1-B1
ENGINE NO. 1 (SEC. 1 TO SEC. 130)	1-D1
ENGINE NO. 2 (SEC. 131 TO SEC. 231)	2-B1
ELECTRICAL	2-F1
POWER TRAIN	3-B1
AXLE	3-J1
BRAKE	4-B1
STEERING	4-F1
BODY (SEDAN) NO. 1 (SEC. 77 TO SEC. 89)	4-H1
BODY (SEDAN) NO. 2 (SEC. 90 TO SEC. 105)	5-B1
BODY (WAGON) NO. 3 (SEC. 106 TO SEC. 121)	5-I1
BODY (WAGON) NO. 4 (SEC. 122 TO SEC. 133)	6-B1
MISCELLANEOUS	9-F1
ALPHABETICAL PART NAME INDEX	6-I1
PART NUMBER INDEX	6-J1

**MASTER INDEX**

GROUP NAME	GROUP SYMBOL
INTRODUCTION	1-B1
ENGINE NO. 1 (SEC. 1 TO SEC. 130)	1-D1
ENGINE NO. 2 (SEC. 131 TO SEC. 231)	2-B1
ELECTRICAL	2-F1
POWER TRAIN	3-B1
AXLE	3-J1
BRAKE	4-B1
STEERING	4-F1
BODY (SEDAN) NO. 1 (SEC. 77 TO SEC. 89)	4-H1
BODY (SEDAN) NO. 2 (SEC. 90 TO SEC. 105)	5-B1
BODY (WAGON) NO. 3 (SEC. 106 TO SEC. 121)	5-I1
BODY (WAGON) NO. 4 (SEC. 122 TO SEC. 133)	6-B1
MISCELLANEOUS	9-F1
ALPHABETICAL PART NAME INDEX	6-I1
PART NUMBER INDEX	6-J1

- Q1 DESCRIPTION**  
The description for the part number is shown in this column.
- Q2 QTY**  
The quantity of the part used in this section appears in this column. "AR" stands for as required.
- Q3 UNIT PKG FOR DIST (For distributors only)**  
This column gives the minimum sales unit for supply. The quantity of the supply for stock orders should be the multiples of this unit. It will make it easy to handle the package and avoids unnecessary delay in shipment.
- Q4 APPLIED MODEL**  
The models are indicated according to the group symbols. When the part is applied to more than one model, the models are shown individually. When one model type is defined by more than one group symbol, the subordinate model type is indicated in parentheses.
- Q5 APPLIED DATE**  
The date when the part is newly equipped on the vehicle or

superseded by a new one on our assembly line is indicated in this column. At the time of the annual model change the date will bring you the actual car number as shown on the page of "Car Number and Engine Number" in the introduction. In the case of ordinary modifications, the actual car numbers or engine numbers are shown as required.

- Q6 ICA**  
This column will help you to clarify the relationship between the new part in the part number column and the former one in the superseded column. Column "N" will indicate the interchangeability of the new part with the former one and the column "F" shows that of the former part with the new one. In this column the following three symbols indicate the relations.  
 Y (Yes)                      There is interchangeability.  
 N (No)                         There is no interchangeability.  
 C (Conditional)            There is conditional interchangeability.  
 In the case that you find C in this column, the condition is indicated in the footnote.
- Q7 SUPERSEDED**  
The former part appears in this column.



## GROUP SYMBOLS AND ABBREVIATIONS

SEDAN	The part is used on all 510 Sedans.	EVAPD	The part is used on 510 model equipped with L16 engine with evaporative emission control devices (including exhaust and crankcase emission control devices) for California only.
WAGON	The part is used on all 510 Wagons.	EXHAUST	The part is used on 510 model equipped with L16 engine with exhaust emission control devices (including crankcase emission control devices) for Ontario and USA except California.
3-SPEED	The part is used on 510 model with a 3-speed manual transmission.	USA-S	The part is used on 510 model for the U.S.A. with both emission control devices and safety devices.
4-SPEED	The part is used on 510 model with a 4-speed manual transmission.	USA	The part is used on 510 model for U.S.A. (including EVAPD, EXHAUST and USA-S)
AUTOMATIC (or AUTO)	The part is used on 510 model with an automatic transmission.	AMERICA	The part is used on all 510 for NORTH AMERICA and SOUTH AMERICA.
L13	The part is used on 510 model with a 1,296 cc (79.1 cu in.) engine.	OP	Optionally equipped.
L16	The part is used on 510 model with a 1,595 cc (97.3 cu in.) engine.	ONLY	ONLY is used together with the destination. For example, USA ONLY means that the part is exclusively used for Australia.
CANADA	The part is used on 510 model for CANADA from 1969 model with safety devices.	EXC	Except.
CRANK	The part is used on 510 model equipped with L16 engine with crankcase emission control devices for every destination except USA (including California) and Ontario.	INC	Including.
4-DOOR	The part is used on all 510 4-DOOR Sedan and Wagon.		
2-DOOR	The part is used on all 510 2-DOOR Sedan.		

## MASTER INDEX

GROUP NAME	
INTRODUCTION	1-B1
ENGINE NO. 1 (SEC. 1 TO SEC. 130)	1-D1
ENGINE NO. 2 (SEC. 131 TO SEC. 300)	2-B1
ELECTRICAL	2-F1
POWER TRAIN	3-B1
AXLE	3-J1
BRAKE	4-B1
STEERING	4-F1
BODY (SEDAN) NO. 1 (SEC. 77 TO SEC. 868)	4-H1
BODY (SEDAN) NO. 2 (SEC. 869 TO SEC. 105)	6-B1
BODY (WAGON) NO. 3 (SEC. 106 TO SEC. 121)	5-I1
BODY (WAGON) NO. 4 (SEC. 122 TO SEC. 133)	8-B1
MISCELLANEOUS	6-F1
ALPHABETICAL PART NAME INDEX	8-I1
PART NUMBER INDEX	8-J1



B9

## MODEL SYMBOLS AND ABBREVIATIONS:

Car Style	Engine	Class	Model	Symbol	Transmission	Door
SEDAN	L16	DX	PLS10-UTZ	PZ	4-SPEED Floor Shift	4-Door
			PLS10-NT	PN (CANADA)		
			PLS10-UT	PL-UT(PX)		
			PLS10-UAZ	PZA	Automatic Remote Control	
			PLS10-NA	PNA (CANADA)		
			PLS10-UA	PL-UA(PXA)		
		PLS10-UAT	PL-UAT	Automatic Floor Shift		
		STD	RPLS10-SNT	RN (CANADA)	4-SPEED Floor Shift	2-Door
			RPLS10-SUT	RPL-SUT(RX)	Automatic Remote Control	
			RPLS10-SAN	RNA (CANADA)		
RPLS10-SAU	RPL-SAU(RXA)					
RPLS10-SATU	RPL-SATU		Automatic Floor Shift			
WAGON	L16	DX	WPLS10-UTZ	WZ	4-SPEED Floor Shift	4-Door
			WPLS10-NT	WPN (CANADA)		
			WPLS10-UT	WPL-UT(WPX)		
			WPLS10-UAZ	WPZA	Automatic Remote Control	
			WPLS10-NA	WPNA (CANADA)		
			WPLS10-UA	WPL-UA(WPX)		
			WPLS10-UAT	WPL-UAT	Automatic Floor Shift	

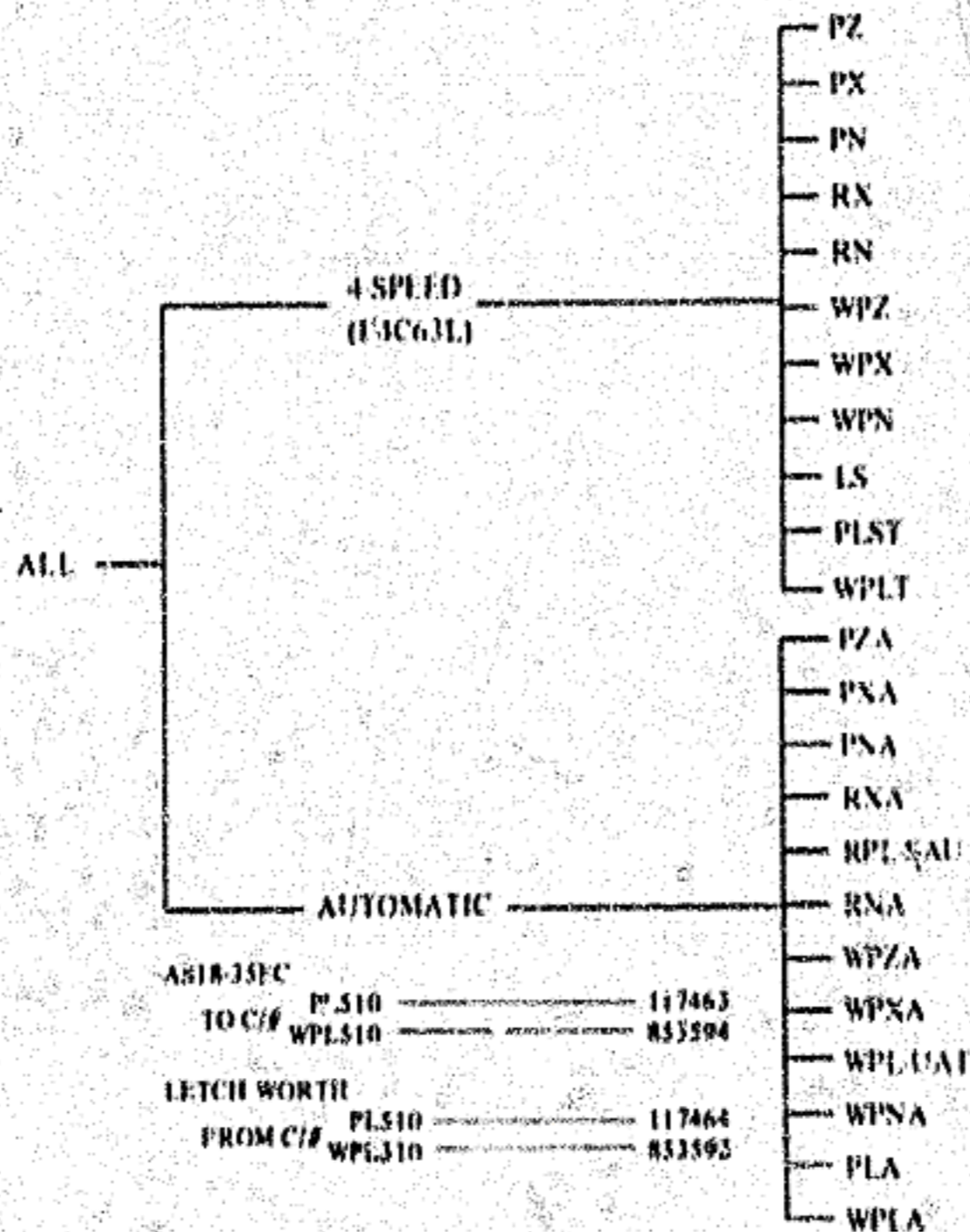
## MASTER INDEX

## GROUP NAME

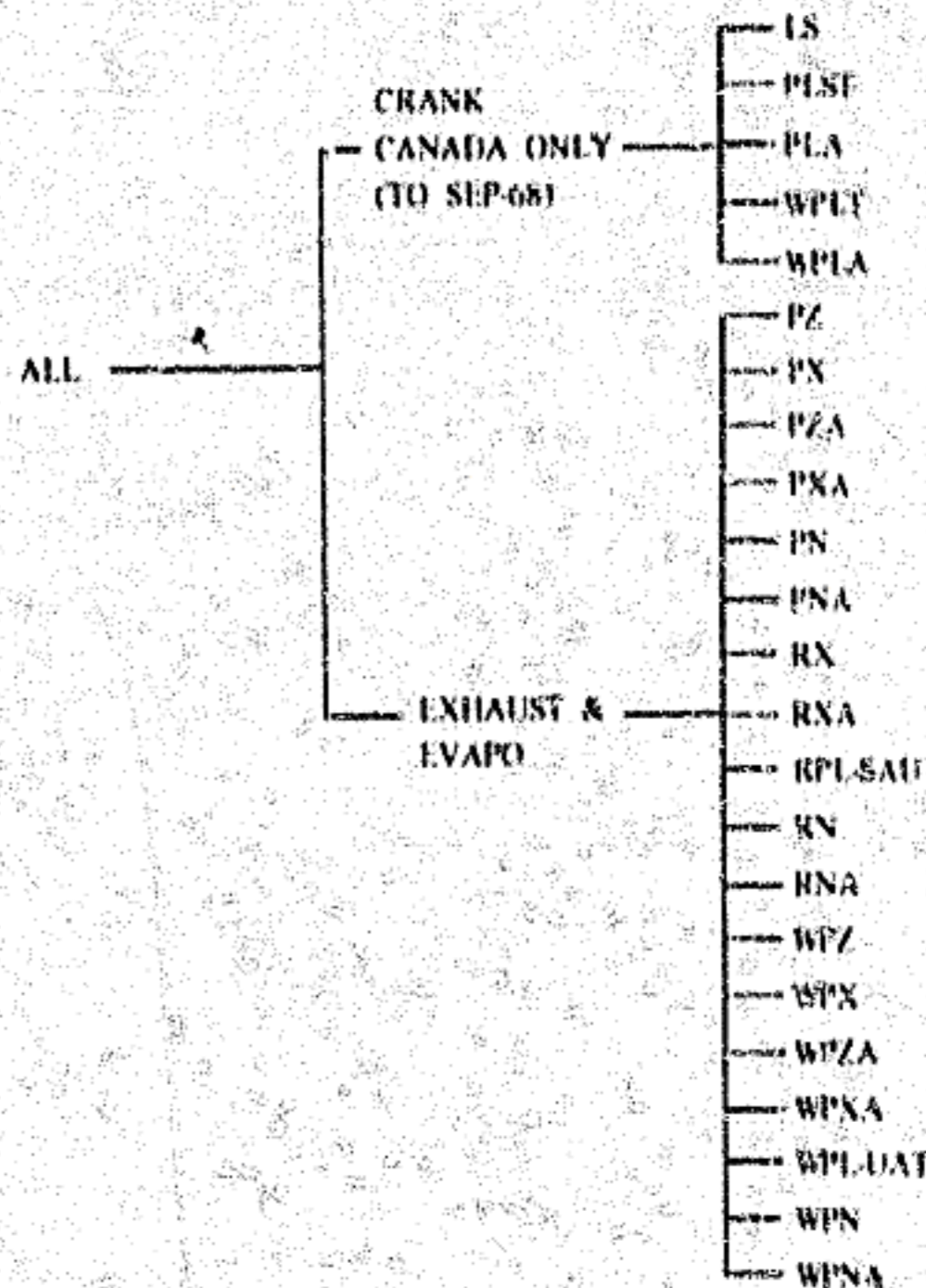
INTRODUCTION .....	1-B1
ENGINE NO. 1 (SEC. 1 TO SEC. 130) .....	1-D1
ENGINE NO. 2 (SEC. 131 TO SEC. 39) .....	2-B1
ELECTRICAL .....	2-F1
POWER TRAIN .....	3-B1
AXLE .....	3-J1
BRAKE .....	4-B1
STEERING .....	4-F1
BODY (SEDAN) NO. 1 (SEC. 77 TO SEC. 88) .....	4-M1
BODY (SEDAN) NO. 2 (SEC. 90 TO SEC. 105) .....	5-B1
BODY (WAGON) NO. 3 (SEC. 106 TO SEC. 121) .....	5-I1
BODY (WAGON) NO. 4 (SEC. 122 TO SEC. 133) .....	6-B1
MISCELLANEOUS .....	6-F1
ALPHABETICAL PART NAME INDEX .....	6-I1
PART NUMBER INDEX .....	6-J1



Transmission Group



Emission Control Group



MASTER INDEX

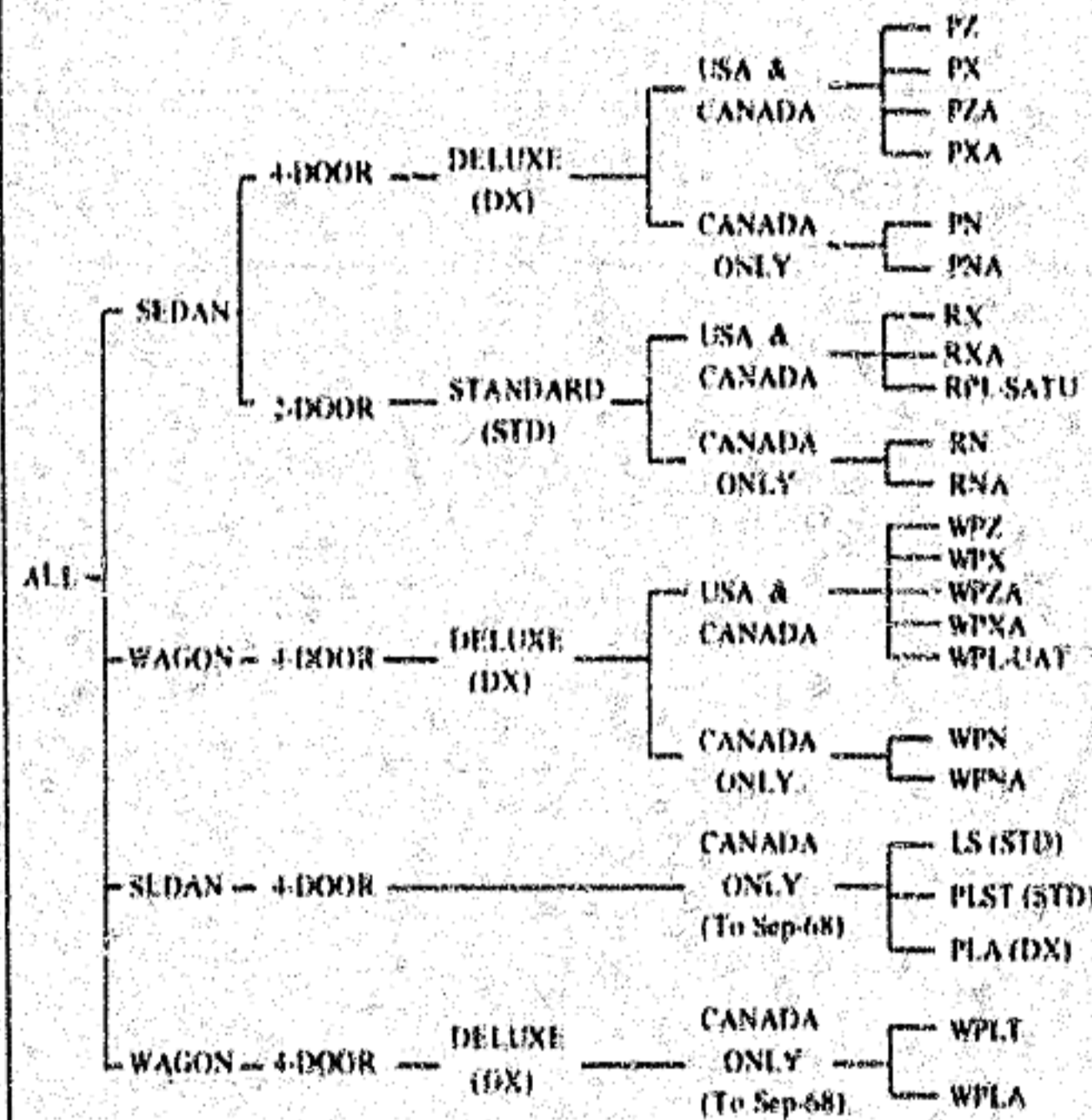
GROUP NAME	
INTRODUCTION	1-B1
ENGINE NO. 1 (SEC. 1 TO SEC. 130)	1-D1
ENGINE NO. 2 (SEC. 131 TO SEC. 50)	2-B1
ELECTRICAL	2-F1
POWER TRAIN	3-B1
AXLE	3-J1
BRAKE	4-B1
STEERING	4-F1
BODY (SEDAN) NO. 1 (SEC. 77 TO SEC. 68)	4-X1
BODY (SEDAN) NO. 2 (SEC. 69 TO SEC. 105)	5-B1
BODY (WAGON) NO. 3 (SEC. 106 TO SEC. 121)	5-J1
BODY (WAGON) NO. 4 (SEC. 122 TO SEC. 133)	6-B1
MISCELLANEOUS	6-F1
ALPHABETICAL PART NAME INDEX	6-I1
PART NUMBER INDEX	6-J1



FOR CANADA ONLY (TO SEP-68)

Car name		Model	Symbol	Style	Transmission
SEDAN	L17	STD	L510-S	LS	3-SPEED Remote Control
			PL510-ST	PLST	4-SPEED Floor Shift
	L16	DX	PL510-A	PLA	4-SPEED Automatic
WAGON	L16	DX	WPL510-T	WPLT	4-SPEED Floor Shift
			WPL510-A	WPLA	4-SPEED Automatic

Style Group



MASTER INDEX

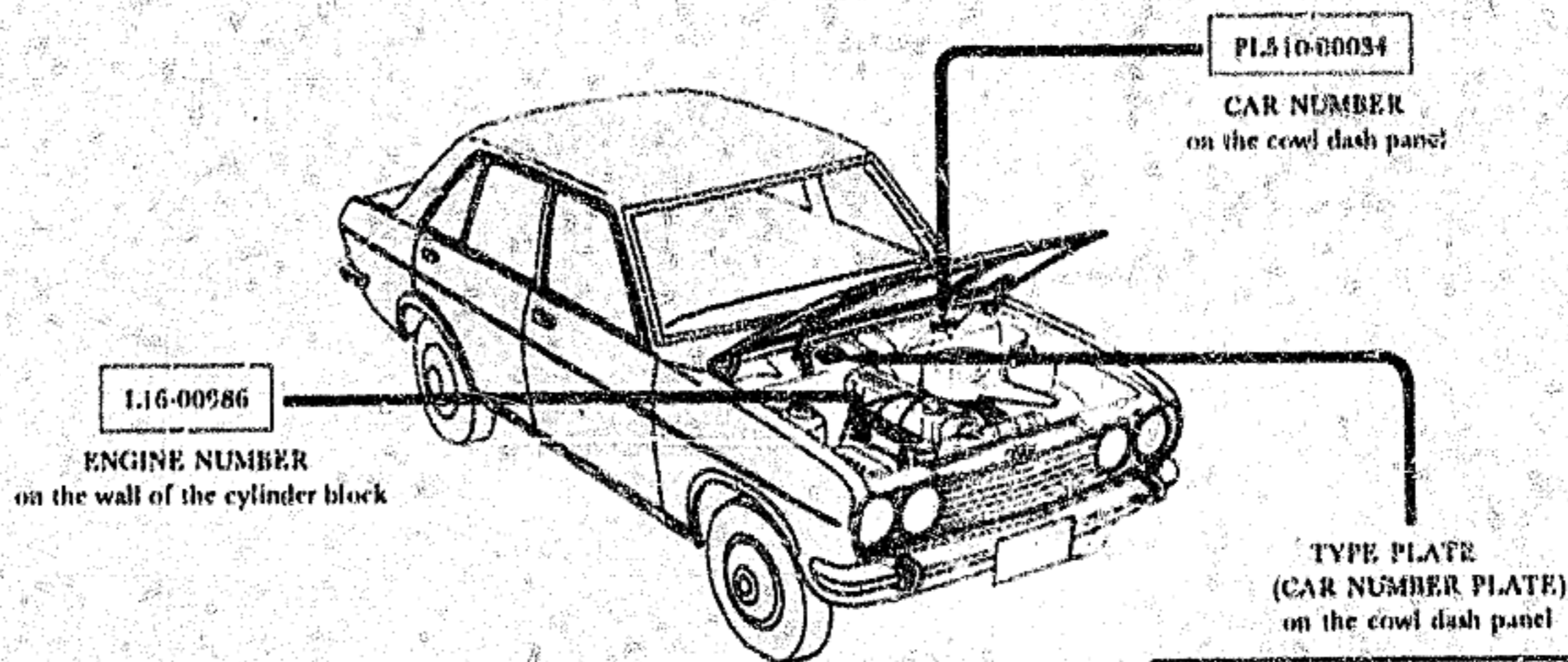
GROUP NAME

INTRODUCTION .....	1-B1
ENGINE NO. 1 (SEC. 7 TO SEC. 130) .....	1-D1
ENGINE NO. 2 (SEC. 131 TO SEC. 39) .....	2-B1
ELECTRICAL .....	2-F1
POWER TRAIN .....	3-B1
AXLE .....	3-J1
BRAKE .....	4-B1
STEERING .....	4-F1
BODY (SEDAN) NO. 1 (SEC. 77 TO SEC. 89) .....	4-H1
BODY (SEDAN) NO. 2 (SEC. 90 TO SEC. 106) .....	5-B1
BODY (WAGON) NO. 3 (SEC. 108 TO SEC. 121) .....	5-I1
BODY (WAGON) NO. 4 (SEC. 122 TO SEC. 133) .....	5-B1
MISCELLANEOUS .....	6-F1
ALPHABETICAL PART NAME INDEX .....	6-I1
PART NUMBER INDEX .....	6-J1



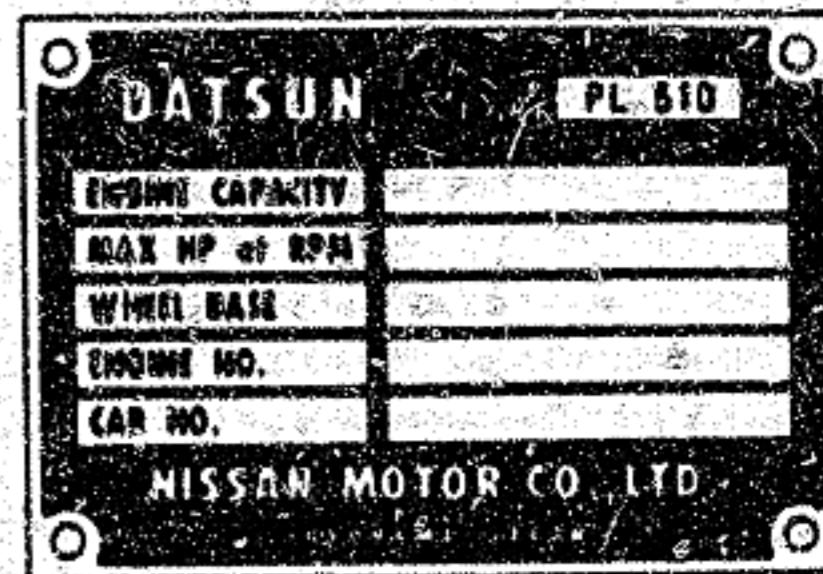
### CAR NO. AND ENGINE NO.

To choose the right parts, always refer to the Car Nos. or Engine Nos., which are located in the engine room (see below).



### MASTER INDEX

GROUP NAME	
INTRODUCTION .....	1-61
ENGINE NO. 1 (SEC. 1 TO SEC. 130) .....	1-01
ENGINE NO. 2 (SEC. 131 TO SEC. 39) .....	2-81
ELECTRICAL .....	2-F1
POWER TRAIN .....	3-31
AXLE .....	3-11
BRAKE .....	4-81
STEERING .....	4-F1
BODY (SEDAN) NO. 1 (SEC. 77 TO SEC. 93) .....	4-H1
BODY (SEDAN) NO. 2 (SEC. 94 TO SEC. 105) .....	5-81
BODY (WAGON) NO. 3 (SEC. 106 TO SEC. 121) .....	5-11
BODY (WAGON) NO. 4 (SEC. 122 TO SEC. 133) .....	5-81
MISCELLANEOUS .....	5-F1
ALPHABETICAL PART NAME INDEX .....	6-11
PART NUMBER INDEX .....	6-51





# DATSUN SEDAN

FROM C 1510 000011 FROM OCT 67  
 M 510 000011  
 TO C 1510 009999 TO SEP 68  
 M 510 040010



## MASTER INDEX

GROUP NAME	
INTRODUCTION	1-B1
ENGINE NO. 1 (SEC. 1 TO SEC. 130)	1-D1
ENGINE NO. 2 (SEC. 131 TO SEC. 30)	2-B1
ELECTRICAL	2-F1
POWER TRAIN	3-B1
AXLE	3-J1
BRAKE	4-B1
STEERING	4-F1
BODY (SEDAN) NO. 1 (SEC. 77 TO SEC. 99)	5-H1
BODY (SEDAN) NO. 2 (SEC. 80 TO SEC. 105)	5-B1
BODY (WAGON) NO. 3 (SEC. 106 TO SEC. 121)	5-I1
BODY (WAGON) NO. 4 (SEC. 122 TO SEC. 13)	6-B1
MISCELLANEOUS	6-F1
ALPHABETICAL PART NAME INDEX	6-I1
PART NUMBER INDEX	6-J1

1-12



# DATSUN WAGON

FROM C 1 WPL 510-800001 FROM OCT '67  
TO C 1 WPL 510-820000 TO SEP '68



## MASTER INDEX

GROUP NAME	
INTRODUCTION	1-81
ENGINE NO. 1 (SEC. 1 TO SEC. 136)	1-01
ENGINE NO. 2 (SEC. 137 TO SEC. 30)	2-81
ELECTRICAL	2-F1
POWER TRAIN	3-B1
AXLE	3-J1
BRAKE	4-B1
STEERING	4-F1
BODY (SEDAN) NO. 1 (SEC. 77 TO SEC. 898)	4-H1
BODY (SEDAN) NO. 2 (SEC. 90 TO SEC. 105)	5-81
BODY (WAGON) NO. 3 (SEC. 106 TO SEC. 121)	5-11
BODY (WAGON) NO. 4 (SEC. 122 TO SEC. 133)	6-81
MISCELLANEOUS	8-F1
ALPHABETICAL PART NAME INDEX	8-11
PART NUMBER INDEX	8-J1

1-13

B15

## DATSUN SEDAN

FROM 1510-010000 FROM OCT-68  
PL 10-04001

## MASTER INDEX

GROUP NAME	
INTRODUCTION .....	1-B1
ENGINE NO. 1 (SEC. 1 TO SEC. 130) .....	1-01
ENGINE NO. 2 (SEC. 131 TO SEC. 301) .....	2-01
ELECTRICAL .....	2-F1
POWER TRAIN .....	3-B1
AX' E .....	3-J1
BRAKE .....	4-B1
STEERING .....	4-F1
BODY (SEDAN) NO. 1 (SEC. 77 TO SEC. 898) .....	4-H1
BODY (SEDAN) NO. 2 (SEC. 90 TO SEC. 105) .....	5-B1
BODY (WAGON) NO. 3 (SEC. 106 TO SEC. 121) .....	5-I1
BODY (WAGON) NO. 4 (SEC. 122 TO SEC. 133) .....	6-B1
MISCELLANEOUS .....	6-F1
ALPHABETICAL PART NAME INDEX .....	6-I1
PART NUMBER INDEX .....	6-J1

1971



# DATSUN WAGON

FROM C. = WPL510-82000-1, FROM OCT. 68



## MASTER INDEX

### GROUP NAME

INTRODUCTION .....	1-B1
ENGINE NO. 1 (SEC. 1 TO SEC. 130) .....	1-D1
ENGINE NO. 2 (SEC. 131 TO SEC. 30) .....	2-B1
ELECTRICAL .....	2-F1
POWER TRAIN .....	3-B1
AXLE .....	3-J1
BRAKE .....	4-B1
STEERING .....	4-F1
BODY (SEDAN) NO. 1 (SEC. 77 TO SEC. 80B) .....	4-H1
BODY (SEDAN) NO. 2 (SEC. 80 TO SEC. 105) .....	5-B1
BODY (WAGON) NO. 3 (SEC. 106 TO SEC. 121) .....	5-I1
BODY (WAGON) NO. 4 (SEC. 122 TO SEC. 133) .....	6-B1
MISCELLANEOUS .....	6-F1
ALPHABETICAL PART NAME INDEX .....	6-I1
PART NUMBER INDEX .....	6-J1

1573



C1

## DATSUN SEDAN

FROM C 11510 TO 040000 FROM OCT. 1971  
TO C 11510 TO 040000 FROM JULY 1974

## MASTER INDEX

## GROUP NAME

INTRODUCTION .....	1-01
ENGINE NO. 1 (SEC. 1 TO SEC. 130) .....	1-01
ENGINE NO. 2 (SEC. 131 TO SEC. 180) .....	2-01
ELECTRICAL .....	2-01
POWER TRAIN .....	3-01
AXLE .....	3-01
BRAKE .....	4-01
STEERING .....	4-01
BODY (SEDAN) NO. 1 (SEC. 111 TO SEC. 100) .....	5-01
BODY (SEDAN) NO. 2 (SEC. 101 TO SEC. 100) .....	5-01
BODY (SEDAN) NO. 3 (SEC. 101 TO SEC. 121) .....	5-01
BODY (SEDAN) NO. 4 (SEC. 101 TO SEC. 130) .....	6-01
MISCELLANEOUS .....	6-01
ALPHABETICAL PART NAME INDEX .....	6-01
PART NUMBER INDEX .....	6-01





# DATSUN SEDAN

FROM C. I. DE LA VOITURE FROM AUG. 70



## MASTER INDEX

### GROUP NAME

INTRODUCTION .....	1-61
ENGINE NO. 1 (SEC. 1 TO SEC. 130) .....	1-01
ENGINE NO. 2 (SEC. 131 TO SEC. 30) .....	2-21
ELECTRICAL .....	2-F1
POWER TRAIN .....	3-01
AXLE .....	3-11
BRAKE .....	4-01
STEERING .....	4-F1
BODY (SEDAN) NO. 1 (SEC. 71 TO SEC. 100) .....	4-H1
BODY (SEDAN) NO. 2 (SEC. 90 TO SEC. 100) .....	5-01
BODY (WAGON) NO. 3 (SEC. 100 TO SEC. 121) .....	6-11
BODY (WAGON) NO. 4 (SEC. 122 TO SEC. 133) .....	6-01
MISCELLANEOUS .....	6-F1
ALPHABETICAL PART NAME INDEX .....	6-11
PART NUMBER INDEX .....	6-11

FICHE 170



# DATSUN WAGON

RUNT W/ 510 883501 FROM ALF 70



## MASTER INDEX

GROUP NAME	
INTRODUCTION .....	1-B1
ENGINE NO. 1 (SEC. 1 TO SEC. 130) .....	1-01
ENGINE NO. 2 (SEC. 131 TO SEC. 201) .....	2-B1
ELECTRICAL .....	2-F1
POWER TRAIN .....	3-B1
AXLE .....	3-J1
BRAKE .....	4-B1
STEERING .....	4-F1
BODY (SEDAN) NO. 1 (SEC. 77 TO SEC. 89) .....	4-H1
BODY (SEDAN) NO. 2 (SEC. 90 TO SEC. 105) .....	5-B1
BODY (WAGON) NO. 3 (SEC. 106 TO SEC. 121) .....	5-I1
BODY (WAGON) NO. 4 (SEC. 122 TO SEC. 133) .....	6-B1
MISCELLANEOUS .....	0-F1
ALPHABETICAL PART NAME INDEX .....	6-I1
PART NUMBER INDEX .....	6-J1

