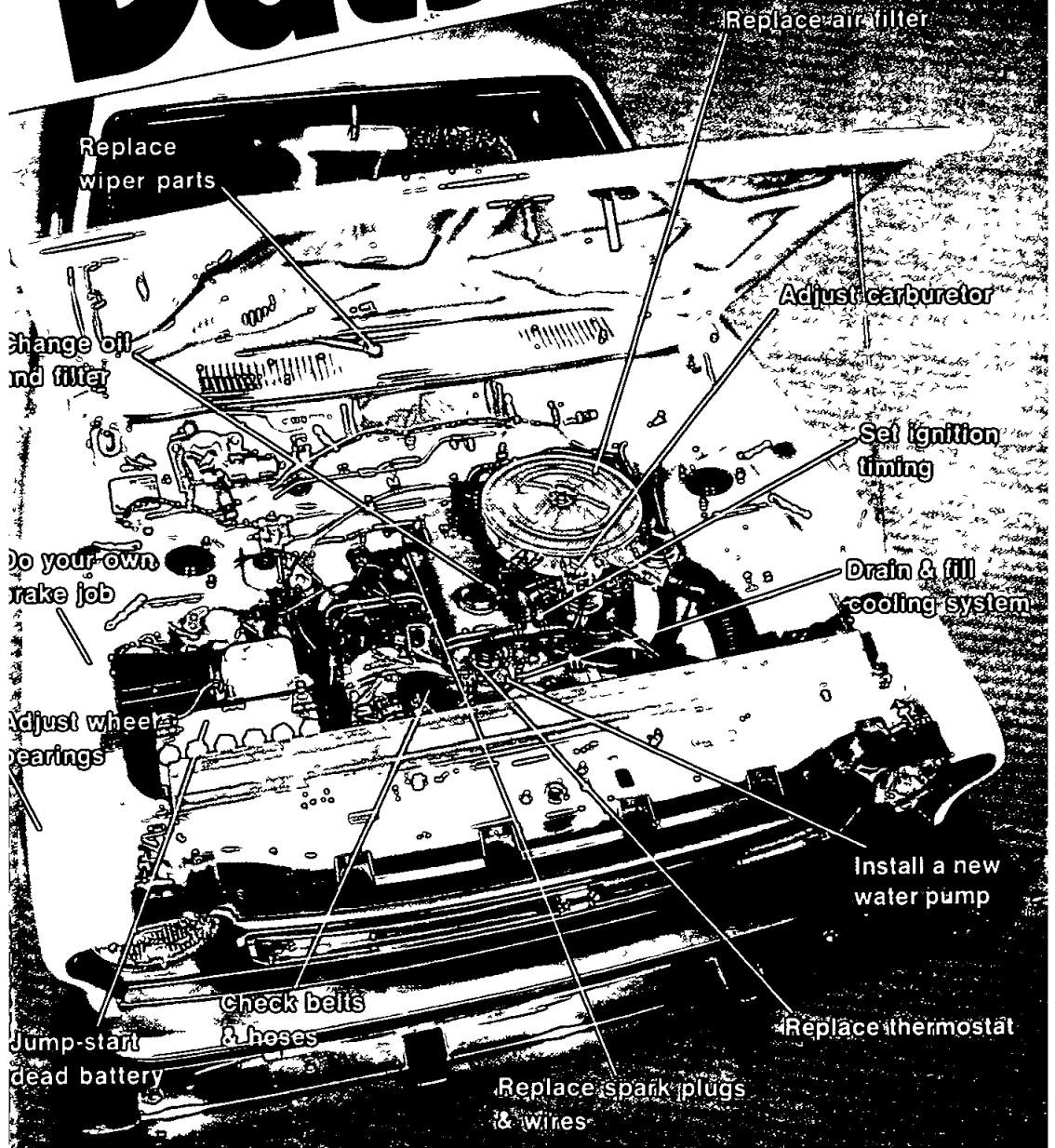




# Datsun

B210  
610  
710



Replace wiper parts

Replace air filter

Adjust carburetor

Change oil and filter

Set ignition timing

Do your own brake job

Drain & fill cooling system

Adjust wheel bearings

Install a new water pump

Check belts & hoses

Replace thermostat

Jump-start dead battery

Replace spark plugs & wires

This is the first page of a 10-page manual. Download all 10 pages of this manual section. Illustrated, step-by-step. Complete tune-up section.

**SATURDAY  
MECHANIC**

# DATSUN

**Car Care Guide**

**For  
Models**

**B210**

**610**

**710**

*Editor*

Louis C Forier, SAE

---

**DATSUN**  
**Car Care Guide**  
**Product Number 23077**  
**ISBN 0-87851-913-0**

**Published by**  
**M O T O R**

**1790 Broadway, New York, N.Y. 10019**

Printed in the U S A © Copyright 1978 by The Hearst Corporation

"The data reported herein has been compiled from authoritative sources. While every effort is made by the editors to attain accuracy, manufacturing changes as well as typographical errors and omissions may occur. The publisher then cannot be responsible nor does it assume responsibility for such omissions, errors or changes."

# Table of Contents

## INTRODUCTION TO MAINTENANCE

Engine Identification	4
Maintenance	4
Maintenance Schedules	5
Approximate Fluid Capacities	12
Changing Engine Oil and Filter	13
Cooling System Service	15
Thermostat Replacement	16
Hose Replacement	18
Drive Belt Replacement	21
Air Cleaner Element Replacement	23
Fuel Filter Replacement	24
Tire Care	27

## TUNE-UP

Checking Compression	29
Spark Plug Service	31
Spark Plug Wires	33
Distributor Service	33
Electronic Ignition Service	33
Breaker Point System	33
Distributor Cap and Rotor Replacement	38
Setting Timing	38
Tune-Up Specifications	41

## FUEL SYSTEM

Carburetor Description and Identification	42
Carburetor Removal and Installation	44
Carburetor Adjustments	46
Idle Adjustment	46
Float Level Check and Adjustment	49
Fast Idle Clearance	50
Choke Cover Adjustment	52
Choke Vacuum Adjustment	52
Choke Unloader Adjustment	54
Interlock Opening Adjustment	54
Dash Pot Adjustment	55
Basic Carburetor Disassembly	56
Fuel Pump	57
Checking Pressure	57
Removal	58
Rebuild	58

## EMISSION CONTROL SYSTEMS

Positive Crankcase Ventilation (PCV) Valve	60
Fuel Evaporative Canister Filter	61

## ELECTRICAL

Jump-Starting a Car With a Dead Battery	62
Battery and Cable Care	63
Alternator Replacement	64
Voltage Regulator Replacement	67
Starter Motor Replacement	68
Starter Clutch Replacement	71
Radio Replacement	72
Model B210	72
Model 610	75
Model 710	79
Windshield Wiper Blade Replacement	82
Windshield Wiper Arm Replacement	83
Windshield Wiper Motor and Linkage	83
Washer Fluid Nozzle Adjustment	85
Light Switch Replacement	85
Model B210	85
Model 610	86
Model 710	87
Turn Signal Switch Replacement	87
Stoplight Switch Replacement	89
Ignition Switch Replacement	89
Heater	91
Model B210	91
Model 610	92
Model 710	95
Fuse Replacement	96
Light Bulb Replacement	96

## COOLING SYSTEM

Radiator Replacement	100
Water Pump Replacement	100
Model B210	100
Models 610 and 710	101

## BRAKES

Front Wheel Disc Brake Pad Adjustment	103
---------------------------------------	-----

Models B210 and 610	103	Cylinder Head Replacement	125
Model 710	106	Model B210	125
Rear Drum Brake Shoes		Models 610 and 710	128
Replacement	109	<b>CLUTCH, TRANSMISSION &amp;</b>	
Front Wheel Bearing Adjustment	110	<b>PROPELLER SHAFT</b>	
Parking Brake Adjustment	111	Clutch Linkage Adjustment	130
Model B210	111	Clutch Replacement	130
Model 610	112	Manual Transmission	
Model 710	113	Replacement	132
<b>SUSPENSION</b>		Model B210	133
Rear Shock Absorber		Models 610 and 710	134
Replacement	115	Automatic Transmission	
Ball Joint Replacement	115	Replacement	135
<b>ENGINE</b>		Automatic Transmission	
Engine Mount Replacement	119	Linkage	136
Front Engine Mounts	119	Model B210	136
Rear Engine Mount	119	Models 610 and 710	139
Timing Case Cover Removal	121	Propeller Shaft Removal	139
Adjusting Valve Clearance	123	Models 610 and 710	139
Model B210	123	Model B210	140
Models 610 and 710	124	<b>MAINTENANCE LOG</b>	141

# Introduction To Maintenance

This book will save you money even if you have never before done your own car maintenance and repairs. It will not make you a professional auto mechanic. It will not even make you a “professional” do-it-yourselfer. But, by being completely devoted to your particular car, and by telling you how to care for the important things that require little if any technical skill, this book will help you to save money. Your own motivation is all that is necessary to go along with this handy, simply-written, confidence-building guide. And even if you never do any of the routine maintenance and easy repairs which we have included, this book may nonetheless still save you money! How? By being packed with hundreds and hundreds of tips and insights about your car, this book will increase your “car savvy.” So when you do entrust your car to a professional auto mechanic, you will do so intelligently, confidently and economically.

In producing this guide, we first carefully selected only those money-saving items of maintenance and repair that you can surely do yourself, even if you are not a do-it-yourselfer. Then we prepared the step-by-step instructions in clear, simple everyday language. Finally, we illustrated all of the important points with scores of “show-me-how” drawings and photographs. As a result, you will quickly find yourself

becoming familiar with routine maintenance, tune-up and replacement of easily accessible parts. All of the normal maintenance parts that you may need are readily available at mass merchandisers at discount prices. So, with you providing some time and a reasonable amount of effort, you will find that saving money will not only be easily possible, but actually enjoyable.

In using this book you will only need a few tools and you may already own many of these. You’ll need a can opener to open the oil cans, a funnel or spout to pour the oil, and a rag. You will also need a set of metric wrenches (socket, open end and box), a wire type feeler gauge, a flat blade type feeler gauge, screwdrivers, channel-lock pliers and possibly an inexpensive dwell/tachometer-timing light. A torque wrench will be desirable if you become involved in doing major work. Generally, we have avoided those jobs that require the use of special tools. Jacks and lifting devices, where specified, can be rented at your local rent-all center.

With this in mind, you can begin saving some of those dollars by acquainting yourself with the contents of this valuable guide. You may be surprised at just how quickly you can learn the many ways of saving money by doing your own car maintenance and repairs.

Trust yourself — you can do it.

## ENGINE IDENTIFICATION

In order to provide good, accurate car care, it is absolutely necessary that you can identify your car properly. We are sure you know the year of your own car but you may not know the year and size of the engine. The following chart lists the various engine code letters in relation to the engine size and year of the engine.

The engine serial number is stamped on the right-hand side of the cylinder block. The first group (A13, A14, L18 and L20B) designates the engine mod-

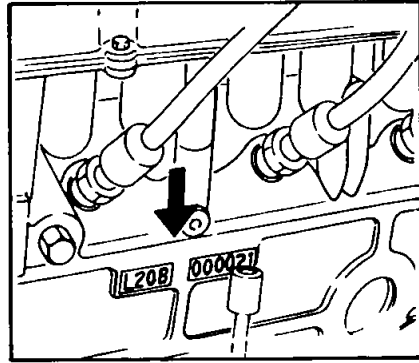


Fig 1 Engine code location

el. The remaining numbers are the vehicle serial number.

Engine Code	Displacement	Application
A13-000000	1288 cc	1974 Model B210
A14-000000	1397 cc	1975-77 Model B210
L18-000000	1770 cc	1973 Model 610 1973-74 Model 710
L20B-000000	1952 cc	1974-76 Model 610 1975-77 Model 710

## MAINTENANCE

To acquaint you with the easiest kinds of maintenance first, we have included factory-recommended lubrication and maintenance lists and charts. These lists contain the various mileage intervals at which certain car services are necessary. Good car habits are important to long car life. A small investment of your time here will pay off many times over in the long term. Lack of proper maintenance is the direct cause of many problems experienced

by car owners. A dirty air filter can cause a drop off in engine performance or fuel mileage. Hard starting may be traceable to spark plugs with badly worn electrodes, due to their not being replaced at proper intervals. Engine oil that has not been changed in ages can often cause engine noise, yet clean oil and filters are, perhaps, the cheapest items in good car care. Start now to keep track of your car's needs. A few hours a month devoted to your car care can save you many dollars and keep your car running in top form. And a car in good tune uses less fuel.

**1974 DATSUN B210**  
**EMISSION-RELATED MAINTENANCE SCHEDULE**

Maintenance Operation	Recommended Intervals			
	Months or Thousands of Miles, Whichever Comes First			
	12	24	36	48
Intake & Exhaust Valve Clearance	A	A	A	A
Engine Compression	I	I	I	I
Drive Belts	I	I	I	I
Engine Oil	R 4000 Miles or 4 Months			
Oil Filter	R 8000 Miles or 8 Months			
Engine Coolant		R		R
Cooling System, Hoses & Connections	I	I	I	I
Vacuum Fittings, Hoses & Connections	I	I	I	I
Carburetor Idle RPM & Mixture Ratio	A	A	A	A
Choke Mechanism (Choke Plate & Linkage)	A	A	A	A
Boost-Controlled Deceleration Device or Throttle Opener	I	I	I	I
Fuel Filter		R		R
Fuel Lines (Hoses, Piping, Connections, etc )		I		I
Carburetor Air Cleaner Element		R		R
Automatic Temperature Control Air Cleaner	I	I	I	I
Ignition Timing	A	A	A	A
Distributor Breaker Point	R	R	R	R
Spark Plugs	R	R	R	R
Distributor Cap, Rotor & Condenser	I	I	I	I
Operating Parts or Distributor, Ignition Wiring & Ignition Coil		I		I
Electric Advance Control System		I		I
Positive Crankcase Ventilation (PCV) Valve	R	R	R	R
PCV Hoses		I		I
Exhaust Gas Recirculation (EGR) Control System	I	I	I	I
Vapor Lines & Fuel Vapor Control Valve	I	I	I	I
Fuel Tank Vacuum Relief Valve		I		I

A = Adjust

R = Replace

I = Inspect, Correct or Replace as Necessary



**1974 DATSUN B210  
NON-EMISSION RELATED MAINTENANCE SCHEDULE**

Maintenance Operation	Recommended Intervals									
	Months	4	8	12	16	20	24	28	32	36
	Thousands of Miles				40	44	48	52	54	60
Brake, Clutch, Fuel & Exhaust Lines & Hoses for Proper Attachment, Leaks, Cracks, Chafing, Abrasion, Deterioration, Etc	I	I	I	I	I	I	I	I	I	I
Transmission & Differential Gear Oil	I	I	I	I	I	I	I	I	R	I
Steering Linkage & Gear Box, Suspension Parts, Propeller Shaft & Flange Bolts			I				I			I
Steering Linkage & Suspension Ball Joints (Grease)						R				
Propeller Shaft Joints (Lubricate if Necessary)*										I
Engine Oil for Leaks	I	I	I	I	I	I	I	I	I	I
Accelerator, Clutch, Parking Brake, Choke, Speedometer & Hood Release Cables or Linkage (Lubricate if Necessary)		I		I		I		I		
Brake, Clutch, Coolant, Automatic Transmission & Steering Gear Fluid Level & Leaks	I	I	I	I	I	I	I	I	I	I
Brake Fluid			R			R			R	R
Brake Master Cylinder						I				
Master-Vac, Vacuum Hose & Check Valve			I			I			I	I
Battery Terminals, Fluids & Specific Gravity		I		I		I			I	
Tire & Road Wheel for Wear & Damage	I	I	I	I	I	I	I	I	I	I
Rotate Wheel Position, Inspect Wheel Balance & Alignment		I		I		I		I		
Headlight Aiming										I
Disc Brake Pad & Other Internal Brake Components for Wear, Deterioration & Leaks**	I	I	I	I	I	I	I	I	I	I
Brake Drums, Linings & Other Internal Brake Components for Wear, Deterioration & Leaks			I							I
Wheel Bearing Grease						I				
Starter Interlock System		I		I		I		I		

I = Inspect, Repair or Replace

L = Lubricate

R = Replace

\* More frequent maintenance if driven in areas using salt or other corrosive materials

\*\* If vehicle is operated under road salt or other corrosive materials, inspect disc brake every 5,000 km (3,000 miles) or 3 months

**1975-77 DATSUN B210  
NON-EMISSION RELATED MAINTENANCE SCHEDULE**

Maintenance Operation	Recommended Intervals										
	Thousands of Miles	6 25	12 5	18 75	25	31 25	37 5	43 25	50	56 25	62 5
	Months	6	12	18	24	30	36	42	48	54	60
Brake Clutch Auto Transmission & Steering Gear Fluid Levels for Leaks	I	I	I	I	I	I	I	I	I	I	I
Brake Fluid		R		R		R		R		R	
Master-Vac Vacuum Hoses & Check Valve		I		I		I		I		I	
Brake Clutch Fuel & Exhaust Systems for Proper Attachment Leaks Cracks Chafing Abrasion, Deterioration Etc	I	I	I	I	I	I	I	I	I	I	I
Manual Transmission & Differential Gear Oil	I	I	I	R	I	I	I	R	I	I	
Steering Gear Box & Linkage, Suspension Parts & Propeller Shaft for Damaged Loose & Missing Parts		I		I		I		I		I	
Steering Linkage & Front Suspension Ball Joints				L				L			
Rotate Wheel Position & Inspect Wheel Balance & Wheel Alignment		I		I		I		I		I	
Disc Brake Pads & Other Brake Components for Wear Deterioration & Leaks*	I	I	I	I	I	I	I	I	I	I	I
Brake Drums Linings & Other Brake Components for Wear, Deterioration & Leaks*		I		I		I		I		I	
Wheel Bearing (Grease)				R				R			
Master-Vac & NP-Valve for Operation	I	I	I	I	I	I	I	I	I	I	I
Air Conditioning System Hoses, Connections & Refrigerant Leaks	I	I	I	I	I	I	I	I	I	I	I
Road Test to Verify Maintenance	I	I	I	I	I	I	I	I	I	I	I

I = Inspect, Repair or Replace

L = Lubricate

R = Replace

\* If vehicle is operated in areas using road salt or other corrosive materials, inspect every 5,000 km (3,000 miles) or 3 months whichever comes first