

PARTS CATALOG

MODEL **410** SERIES

NISSAN MOTOR CO., LTD.

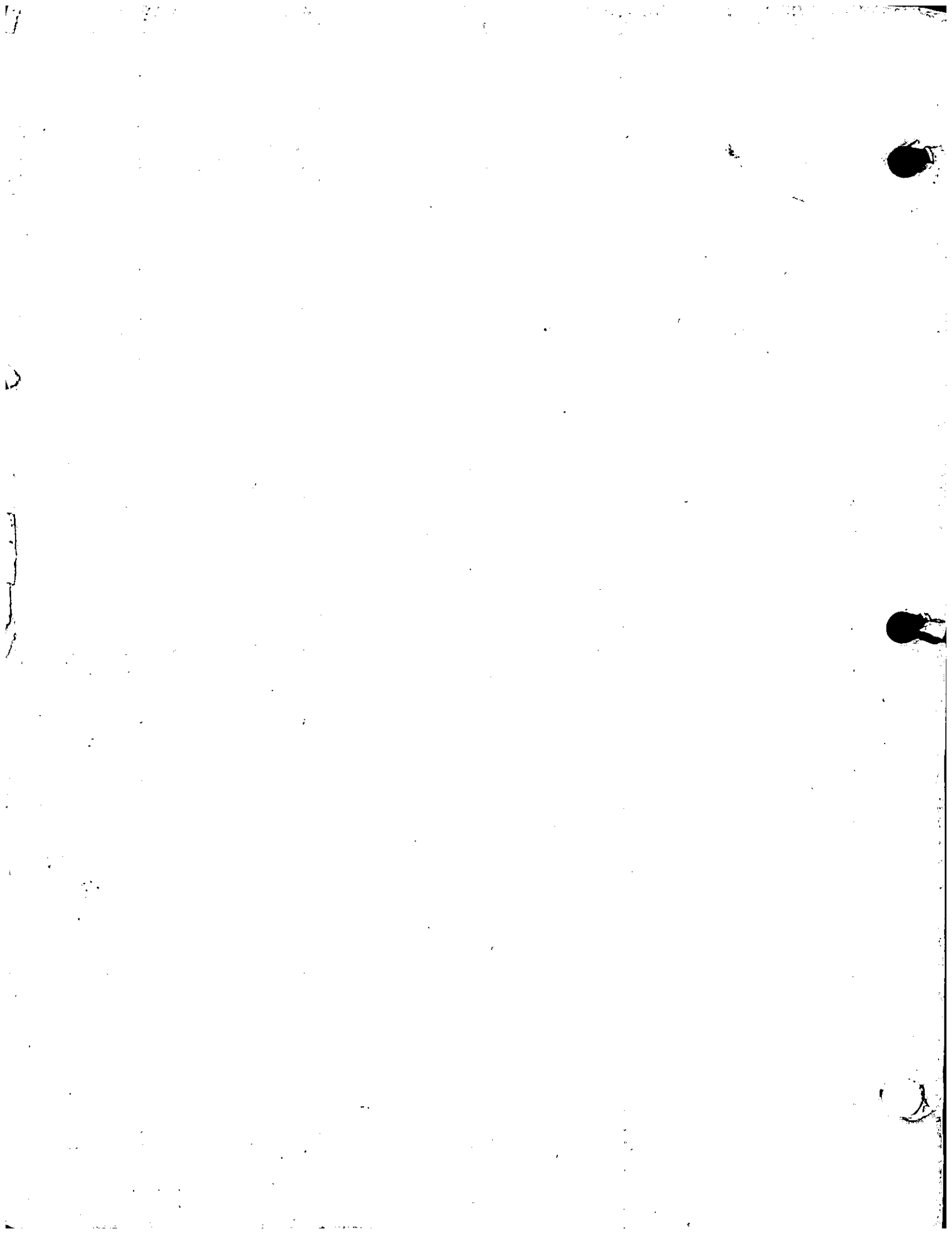
7,6-CHOME, GINZA-HIGASHI, CHUO-KU,
TOKYO, JAPAN

Cable Address : "NISMO" TOKYO

Telex : "NISMO" TK2503

Phones : (543) 5523

Pub. No. C-052E



INTRODUCTION

To bring better customer service and better spare parts supply, please note the following four points when referring to this Parts Catalog.

I. HOW TO USE THIS PARTS CATALOG

- A. The Publication Number of this Parts Catalog C-052E. Whenever quoting the Parts Catalog, tell us this Pub. No. .
- B. All spare parts available for MODEL 410 series are included here.
- C. Spare parts are compiled in order of their functional section index which appears on page 19.
- D. Brief specifications of Model 410 series appear on page 3.
- E. Symbols and Abbreviations appear on page 6.
- F. Part Number Index is attached to the end of this Parts Catalog.

II. HOW TO PLACE YOUR ORDERS FROM THE PARTS CATALOG (FOR DISTRIBUTOR USE ONLY)

- A. Typewrite the spare parts which you are going to order on the given Nissan Spare Parts Order Sheet.
- B. At least the Part Numbers and the Quantity must be filled in as accurately as possible. Otherwise our computer may reject your order.
- C. In the case that you can not find the Part No. which you are going to order we shall be very glad to take care of this problem after verifying its availability. Therefore, place your order on another order sheet as a conditional order, which does not include a Ordinary order, telling us precisely the Part Name, the Place where it is attached and the Quantity if it is a colored thing or material, attach a sample.

III. HOW TO COMPARE THE CONFIRMATION LIST AND THE PARTS CATALOG (FOR DISTRIBUTOR USE ONLY)

Although all parts contained here are in principle available for supply, if you find some parts shown in the Parts Catalog sorted F/# 5 on the confirmation list where the availability of your ordered parts are classified by our computer in respect to our stock control system, kindly tell us the Parts Numbers, the Pub. No. of the Parts Catalog (C-052E), and the Page. We shall be glad to inform you of the availability by the revised confirmation list as soon as possible.

IV. HOW TO ADAPT TO OUR PART NUMBER SYSTEM

In our parts-supply system, the Part Number plays a key role. Therefore, you may print only the part numbers and the quantity as long as they do not cause mutual misunderstandings.

For this reason, kindly become familiar with our Part Number System which appears on page 10.

BRIEF SPECIFICATION

MODEL ITEM	P(L)410-U	WP(L)410-U	(W)P(L)410-UT
CAR DIMENSIONS			
Overall length mm (in)	3,995 (157.4)	3,995 (157.4)	3,995 (157.4)
Overall width mm (in)	1,490 (58.7)	1,490 (58.7)	1,490 (58.7)
Overall height mm (in)	1,390 (54.8)	1,426 (56.2)	1,430 (56.3)
Wheel base mm (in)	2,380 (93.8)	2,380 (93.8)	2,380 (93.8)
Tread-front mm (in)	1,206 (47.5)	1,206 (47.5)	1,206 (47.5)
Tread-rear mm (in)	1,198 (47.2)	1,198 (47.2)	1,198 (47.2)
Road clearance mm (in)	175 (6.9)	175 (6.9)	175 (6.9)
CAR WEIGHT			
Car weight kg (lb)	885 (1,947)	960 (2,112)	960 (2,112)
Seat	5	5	5
Total car weight kg (lb)	1,160 (2,552)	1,235 (2,717)	1,235 (2,717)
PERFORMANCES			
Maximum speed km/h	128 (80 MPH)	128 (80 MPH)	135 (85 MPH)
Fuel consumption (km/L)	18	18	18
Grade ability (sin θ)	0.34	0.34	0.36
Minimum turning radius m (ft)	5.0 (16)	5.0 (16)	5.0 (16)
ENGINE			
Type	E-1	E-1	E-1
Sort	Gasoline engine	Gasoline engine	Gasoline engine
Cylinder arrangement	4-in line	4-in line	4-in line
Cycle	4	4	4
Valve arrangement	Over head	Over head	Over head
Bore \times stroke mm (in)	73 \times 71 (2.88 \times 2.80)	73 \times 71 (2.88 \times 2.80)	73 \times 71 (2.88 \times 2.80)
Piston total displacement cc (in)	1.189 (72.5)	1.189 (72.5)	1.189 (72.5)
Compression ratio	8.2	8.2	8.2
Maximum power (HP/rpm) (SAE)	60/5,000	60/5,000	60/5,000
Maximum torque kg-m/rpm (ft-lb)	9.3/3,600 (67.3)	9.3/3,600 (67.3)	9.3/3,600 (67.3)
Length \times width \times height mm (in)	589 \times 582 \times 690 (23.2 \times 22.9 \times 27.2)	589 \times 582 \times 690 (23.2 \times 22.9 \times 27.2)	589 \times 582 \times 690 (23.2 \times 22.9 \times 27.2)
Total engine weight kg (lb)	138 (304)	138 (304)	138 (304)

EXPLANATION OF EACH COLUMN

I. "S" column (preceding the KEY NO. column.)

DISTRIBUTOR USE ONLY

*..... Signifies that the part No. has been removed. In such a case, use the superseding part Nos. shown below.

..... The parts preceded by # mark are conditional order items place the order as specified in the Nissan Parts S. O. P. .

II. KEY NO. column

..... A KEY NO. consists of three digits.
The key Nos. will be changed at each revision.

III. PART NO. column

..... They are as a rule ten digits.
However, 12-digit Part Nos. may rarely appear.

IV. PART NAME column

..... PART NAME column contains not only the part name but applied Car No. or Engine No. "INC" is the abbreviation of "Including".

V. Q'TY column

..... The quantity in this column shows the pieces of the part used in the section.
"AR" is the abbreviation of "As Required".

VI. SALES UNIT column (DISTRIBUTOR USE ONLY)

..... SALES UNIT column indicates the pieces which are contained in a packing box (i. e. bulk unit).

Accordingly, if you place the order for a part multiplying its sales unit, you will receive the part in a form easily to be stored into the bin (ex.

Sales unit 10 make your order by 19, 20, 30).

The Sales Units which are not filled-in will be advised you through the Revised Sheets.

VII. SYMBOLS AND ABBREVIATIONS IN THE APPLIED MODEL

The symbols and the abbreviations used in the applied model column are as follows. These symbols are taken by each model type, equipment (i. e. Super and Deluxe), the position of steering wheel, the transmission system, the displacement of the engine, sedan and the destinations.

..... The details of the group symbols which contain some group of the model types are shown on page 7.

VIII. "ICA" column

"ICA" is the abbreviation of Interchangeability.

"Y" is the abbreviation of Yes (i. e. Interchangeable).

"N" is the abbreviation of No (i. e. Non-interchangeable).

"C" is the abbreviation of Conditional (i. e. Interchangeable with condition).

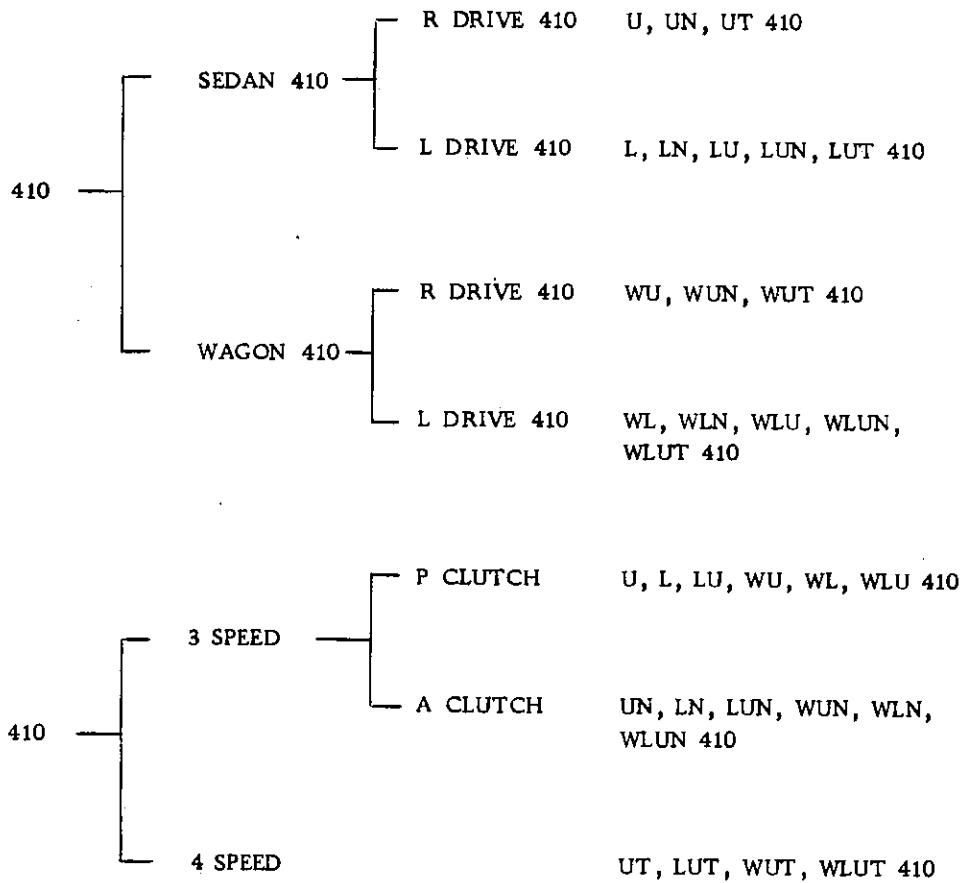
In the case of "C" the details of the condition are described by the Figure.

The only modified parts carry this column.

These codes always show the relation between the part itself and the former part shown above.

SYMBOL AND ABBREVIATION

SYMBOL	MODEL	EXPLANATION	FINAL GEAR RATIO
U 410	P 410-U	RIGHT HAND DRIVE 410 SEDAN 3 SPEED	4.375
UN 410	P 410-UN	RIGHT HAND DRIVE 410 SEDAN 3 SPEED WITH AUTO CLUTCH	4.375
L 410	PL 410	LEFT HAND DRIVE 410 SEDAN 3 SPEED	4.625
LN 410	PL 410-N	LEFT HAND DRIVE 410 SEDAN 3 SPEED WITH AUTO CLUTCH	4.625
LU 410	PL 410-U	LEFT HAND DRIVE 410 SEDAN 3 SPEED	4.375
LUN 410	PL 410-UN	LEFT HAND DRIVE 410 SEDAN 3 SPEED WITH AUTO CLUTCH	4.375
UT 410	P 410-UT	RIGHT HAND DRIVE 410 SEDAN 4 SPEED	4.111
LUT 410	PL 410-UT	LEFT HAND DRIVE 410 SEDAN 4 SPEED	4.111
WU 410	WP 410-U	RIGHT HAND DRIVE 410 WAGON 3 SPEED	4.375
WUN 410	WP 410-UN	RIGHT HAND DRIVE 410 WAGON 3 SPEED WITH AUTO CLUTCH	4.375
WL 410	WPL 410	LEFT HAND DRIVE 410 WAGON 3 SPEED	4.625
WLN 410	WPL 410-UN	LEFT HAND DRIVE 410 WAGON 3 SPEED WITH AUTO CLUTCH	4.375
WLU 410	WPL 410-U	LEFT HAND DRIVE 410 WAGON 3 SPEED	4.375
WLUN 410	WPL 410-UN	LEFT HAND DRIVE 410 WAGON 3 SPEED WITH AUTO CLUTCH	4.375
WUT 410	WP 410-UT	RIGHT HAND DRIVE 410 WAGON 4 SPEED	4.111
WLUT 410	WPL 410-UT	LEFT HAND DRIVE 410 WAGON 4 SPEED	4.111

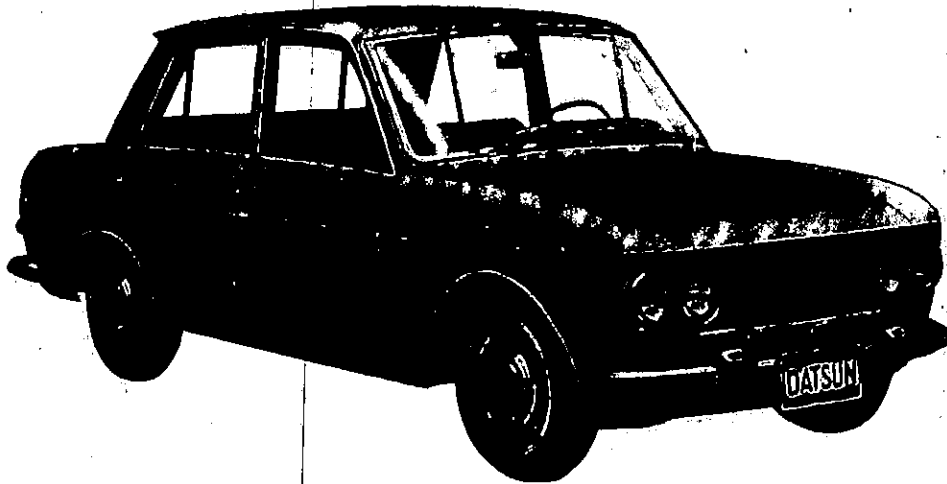


GROUP SYMBOLS

410	The part is used on all types of DATSUN SEDAN and WAGON 410 model.
R DRIVE 410	The part is used on all right hand drive 410 model.
L DRIVE 410	The part is used on all left hand drive 410 model.
3 SPEED 410	The part is used on 410 model with a 3-SPEED manual transmission.
4 SPEED 410	The part is used on 410 model with a 4-SPEED manual transmission.
P CLUTCH 410	The part is used on 410 model with a MANUAL (pedal) clutch.
A CLUTCH 410	The part is used on 410 model with a AUTO clutch.
SEDAN 410	The part is used on 410 SEDAN.
WAGON 410	The part is used on 410 WAGON.
HEAVY DUTY 410	The part is used on 410 model for heavy duty.
Exc.	"Exc" signifies except. Accordingly "410 Exc. USA" means that the part is used on 410 model except for the USA.
ONLY	"ONLY" is used together with the destination. For example, AUSTRALIA ONLY means that the part is exclusively used for Australia.
op.	"OP" signifies the part is optionally equipped.

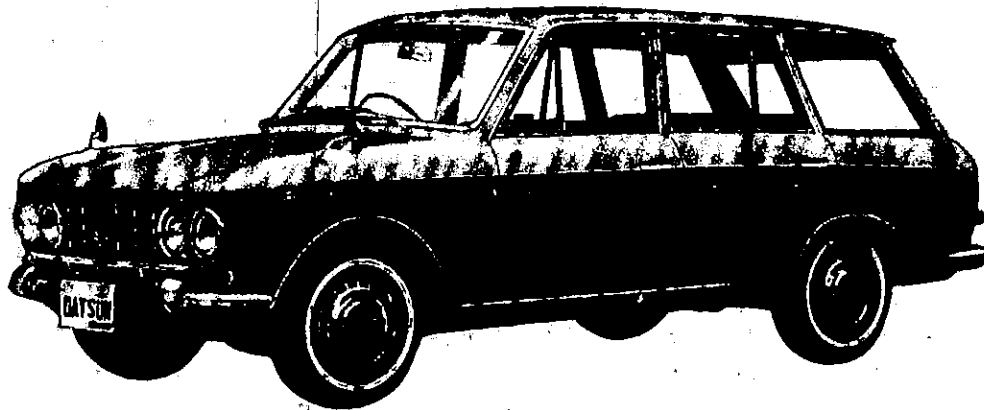
DATSUN SEDAN
(1964 YEAR MODEL)

MODEL P410



DATSUN WAGON
(1964 YEAR MODEL)

MODEL WP410



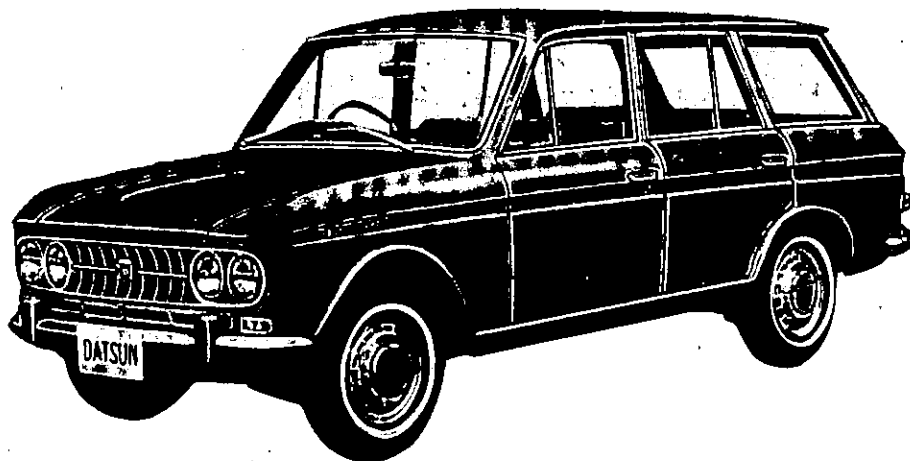
DATSUN SEDAN
(1965 YEAR MODEL)

MODEL P410



DATSUN WAGON
(1965 YEAR MODEL)

MODEL WP410



EXPLANATION OF NISSAN PARTS NUMBER SYSTEM

Our part number as a rule consists of ten digits which are made up of four factors as follows. However, in order to standardize small parts such as screws, washers, bolts, nuts and so on, which are often used on our models, we specify them as NES part according to the Nissan Engineering standard (N. E. S.).

These NES parts in principle consist of six digits or eight digits.

Section No.	Character No.	Part Type No.	Distinction No.
O O	O O O	— O O O	O O O

1. Section No. (2 digits)

The Section No. consists of 2 digits which indicate the major function of parts.

2. Character No. (3 digits)

The Character No. consists of 3 digits which indicate minor classification in each Section as shown by the Table of Section and Character No. on Page 12. The character No. of 000 or X00 signifies the assembly parts.

3. Part Type No. (3 digits)

The Part Type consists of 3 digits which in principle indicate the applied model as shown by the Table of Part Type on page 15. This means that the part is originally designed for that model. However, it may be used widely over our models. Therefore, it does not always signify the applied model.

4. Distinction No. (2 digits)

The Distinction No. consists of 2 digits which indicate the difference between similar parts as shown below.

Kinds of Distinction	Distinction No.
a. Similarity	00-19, 60-69
b. Exclusive Service Use	25-29, 75-79
c. Material	40-45, 80-85
d. Processing	30-39, 90-94 50-59

Note: The othr Distinction Nos. are unset.

a. Similarity

When parts are only slightly changed, the distinction is shown by this No. Similar or colored parts are distinguished by this No.

For example;	74902-11400	Carpet (red)
	74902-11401	Carpet (blue)
	74902-11402	Carpet (brown)

b. Exclusive Service Use

Repair kits or sets which are used exclusively for service, are set by this No.

For example;	46010-10800	Brake Master Cylinder assembly
	46010-10825	Repair kit

c. Material

The difference of materials is distinguished by this No.

d. Processing

For the convenience of our production line process, in the case we can not supply by the original part No., the sub-assembly is supplied by this No.

For example;	20132-08750	Clamp sub-assembly Components
	20132-08700	Clamp-lower
	20133-08700	Clamp-upper
	1-14520-1	Bolt
	9-15115-1	Washer

5. Except those numerical part numbers, there are the part numbers beginning with letters. They are the part numbers exclusively reserved for service use.

TABLE OF SECTION AND CHARACTOR NO.

S — Section No.
C — Character No.

Classification		Section	Classification		Section	Classification		Section
S	C		S	C		S	C	
10		Engine complete section		100	Accelerator link		400	Fuse & holder parts
	000	Engine complete		400	Engine control			
	100	Engine assembly				26		Electric section No. 5
11		Engine section No. 1	19		Decomp & governor section		000	Lamps No. 1 (Outside)
	000	Cylinder parts		000	Decomp parts		100	Lamps No. 2 (Inside)
	100	Oil pan parts		100	Governor parts		200	Horn
	200	Engine support, front		200			300	
	300	Engine support, rear		300				
	400	Engine stabilizer				27		Room-heater & radio
12		Engine section No. 2	20		Exhaust section		000	Room heater
	000	Piston, pin & ring		000	Exhaust tube		100	Control box
	100	Connecting rod		100	Muffler		300	Radio & clock
	200	Crank shaft		200	Tail tube			
	300	Flywheel				30		Clutch group
13		Camshaft & valve section	21		Cooling system		000	Clutch with housing
	000	Camshaft & timing gear		000	Water pump		100	Clutch disc
	200	Valve parts		200	Thermostat		200	Clutch cover & pressure plate
				300	Oil cooler		400	Bell-housing
14		Manifold section	23		Radiator		400	Clutch with drawal
	000	Manifold parts		400	Hose & mounting parts		500	Clutch control
	300	Ejector assembly		500			600	
15		Lubrication section			Electrion No. 1			
	000	Oil pump		100	Distributor		32	Transmission group
	100	Oil tube		200	Vacuum control		000	Transmission assembly
	200	Oil filter		300	Plug-spark & cords		100	Case, extension covers
16		Fuel section No. 1	23		Generator		200	3-shaft gear train
	000	Carburetor		400	Regulator		600	Synchronizer parts
	400	Gasoline strainer		500	Regulator		700	Speed-drive parts
	500	Air cleaner					800	Shift-control parts
	600	Fuel supply system	24		Electric section No. 2		900	Fork & levers
	700	Injection pump		100	Generator			
	800			200	Regulator		33	Auxiliary gear box section
				300	Regulator		100	Trasfer parts
17		Fuel section No. 2			Electric section No. 3		200	Power take off gear
	000	Fuel pump		000	Wring		300	
	200	Fuel tank		100	Cable parts		34	Transmission control
	400	Fuel tank mounting		200	Battery		100	Control device
	500	Fuel piping	25		Electric section No. 4		400	Linkage
18		Engine control section		000	Meters		500	Linkage parts
	000	Accelerator pedal		100	Meters parts			
				200	Switches			
				300	Switch & parts			

Classification		Section	Classification		Section	Classification		Section
S	C		S	C		S	C	
37		Propeller shaft group	48		Steering section	800	Radiator shell fitting	
	000	Propeller shaft mounting		000	Steering assembly			
	100	Joint & yokes		100	Roller shaft	63	Fender section	
	200	Propeller shaft primary		200	Steering cover	100	Front fender	
	300	Secondary propeller shaft		300	Steering mounting parts	800	Fender fitting	
	500	Center bearing & hanger		400	Steering wheel			
				500	Steering linkage	64	Hood ledge section	
38		Final drive unit				100	Hood ledge	
	100	Drive pinion & gear	50		Frame section	800	Hood ledge fitting	
	200	Companion flange		100	Frame parts			
	300	Gear carrier		200		65	Hood section	
	400	Differential gear				100		
	500	Front drive parts	51		Cross member section	200	Hood	
				000	Cross member parts	300		
40		Front axle section		100	Hook parts	400	Hood hinge	
	000	Front axle				500		
	200	Hub & drum	54		Front suspension section	600	Hood lock	
	300	Road wheel		000	Front spring	700		
	500	Front axle parts		200	Spring mounting parts	800	Hood fitting	
				300	Cross member-suspension			
41		Front brake section		400	Assembly suspension	66	Cowl section	
	000	Front brake				100	Front pillar	
	100	Wheel cylinder	55		Rear suspension section	300	Cowl top	
				000	Rear spring	400	Cowl side	
43		Rear axle section		200	Spring mounting parts	800	Cowl trimming	
	000	Rear axle				900	Cowl trimming	
	100	Rear axle parts	56		Shock absorber section			
	200	Hub & drum		100	Front shock absorber	67	Dash section	
	300	Road wheel		200	Rear shock absorber & stabilizer	100	Dash	
						200		
44		Rear brake section				300	Dash lower	
	000	Rear brake	57		Spare tire section	800	Dash fitting	
	100	Control device		200	Spare tire carrier	900	Dash trimming	
46		Master cylinder, pedal & piping	60		Body complete white body	68	Instrument section	
	000	Piping & cylinder assembly		000	Body front & body main	100		
	100	Master cylinder parts		100	Cab complete	200	Instrument	
	200	Brake piping				300		
	300	Brake tube parts	61		Body front group	400	Cluster lid	
	400	Pedal parts		000	Front body assembly	500	Cluster lid	
	500	Dust seal & mounting parts				600	Glove pocket & lid	
			62		Radiator shell & bumper section	800	Instrument fitting	
						900	Instrument trimming	
47		Power brake section		100	Radiator shell	72	Windshield section	
	100	Vacuum tank		200				
	200	Hydraulic power cylinder		300	Radiator grille	100	W/S outer & inner	
	300			400		600	Glass & weatherstrip	
	400	Vacuum tube		500	Radiator core support	800	W/S fitting	
	500	Reservoirs mount parts		600	Bumper apron			
				650	Front bumper			

Classification		Section	Classification		Section	Classification		Section
S	C		S	C		S	C	
73		Roof section	82		Rear door section No. 1	500		Rear body floor
	100	Roof panel		100	Rear door inner, outer	600		
	200	Roof rail		200	Ventilator, sash	650		Wheel housing
	800	Roof fitting		300	Door window	700		Rear body sill
	900	Roof trimming		400	Hinge & check link	800		Rear body fitting
74		Floor section No.		500	Lock, remote control & handle	900		Rear body trimming
	100	Toe riser		700	Window regulator & handle	95		Body mounting section
	200	Toe board		800	Rear door fitting	100		Body mounting
	300	Front floor		900	Rear door trimming	96		E.T.C. section No. 1
	400	Front floor		84	Trunk section	100		Step & consernings
	500	Rear floor		100	Trunk floor	200		Licence plate bracket
	600	Under sill		200	Trunk side	300		Back mirror
	700	Seat riser		300	Trunk lid	400		Sun visor
	750	Tunnel		400	Trunk lid lock, handle support	500		Ash tray
	800	Floor member		500	Trunk lid lock, handle support	600		Fire extinguish
	900	Floor trimming		600	Trunk lid lock, handle support	700		Assist rail
76		Body side section No. 1		800	Trunk fitting	800		Package tray
	100	Body side frame		900	Trunk trimming	900		Body name & caution plate
	200	Body side frame		85	Rear bumper section	97		E.T.C. section No. 2
	300	Body side panel		100	Rear bumper apron	100		Reflector
	400	Body side sill		200	Rear bumper bracket	200		Plate meter
	500	Center pillar		800	Rear bumper fitting	99		Car complete & tool section
	600	Rear pillar		86	Front seat section No. 1	000		Car complete
	700	Rear wheel house		100	Seat cushion frame	100		Chassis complete
	800	Body side fitting		200	Seat back frame	500		Tool & setting parts
	900	Body side trimming		300	Seat cushion & trim			
78		Rear fender section		400	Seat cushion & trim			
	100	Rear fender		500	Seat adjusting			
79		Back panel section		600	Seat back & trim			
	100	Back panel		700	Center arm rest & trim			
	200	Back panel		800	Seat fitting			
	300	Rear corner		88	Rear seat section No. 1			
	400	Rear seat back panel		100	Seat cushion frame			
	700	Rear window		200	Seat back frame			
	800	Back panel fitting		300	Seat cushion & trim			
	900	Back panel trimming		500	Seat adjusting			
80		Front door section No. 1		600	Seat back & trimming			
	100	Front door inner outer		700	Center arm rest & trim			
	200	Ventilator, sash		800	Seat fitting			
	400	Hinge and chack link		93	Rear body section No. 1			
	500	Lock, remote control handle		100	Guard frame			
	700	Window regulator & handle		200	Header board			
	800	Front door fitting		300	Side board & side gate			
	900	Front door trimming		400	Rear gate			

TABLE OF PART TYPE

Small Part Type							
Vehicle Type	Part Type	Vehicle Type	Part Type	Vehicle Type	Part Type	Vehicle Type	Part Type
113	001	LG222	052	N320	101	PL410-U('65)	139
L113	002	L222	053	NL320-U	103	DP410-M('65)	140
123	003	126	054	SP310	104	DP410-N	141
L123	005	PG222	065	SPL310-U	105	DP410-LM	142
114	008	PLG222	066	P410	106	P410-UT	143
124	009	WP310	071	410	107	PL410-UT	144
210	013	223	072	PL410	108	P410-P	145
L210	014	G223	073	WP410	109	SP311	146
220	015	LG223	074	WPL410	110	SPL311	147
L220	016	VG223	075	P410R	111	520	148
G220	026	VLG223	076	A122	112	L520	149
211	027	U223	077	VA122	113	U520	150
221	028	UL223	078	DP410	114	UL520	151
G221	029	311	080	DP410-L	115	V520	152
L211	030	P311	081	P410-U	116	VL520	153
L221	031	WP311-U	082	P410-N	117	DP410-R	156
A20	032	PL311-U	083	DP410-M	118	CSP311	163
115	033	WPL311-U	084	DP410-N	119	P411	165
125	034	A120	085	DP410-LN	120	DP411	166
LG220	035	SPL213	086	PL410-N	121	DP411-MTK	167
U221	036	320	087	SP310	122	P411-P	168
V221	037	L320	088	SPL310-U	123	P411-UT	169
LG221	039	VA120	089	A220	126	PL411-U	170
P212	040	U320	090	VA220	127	PL411-UT	171
310	041	V320	091	SP310('65)	129	P411-UTK	172
L310	042	UL320-U	092	SPL310('65)	130	PL411-UTK	173
U222	043	VL320-U	093	A220-H	131	WP411	174
P310	044	312	094	P410('65)	132	WPL411-U	175
WPL310	045	P312	095	PL410('65)	133	P411-N	176
VG222	046	PL312	096	WP410('65)	134	DP411-L	178
SPL212	047	WP312	097	WPL410('65)	135	P411-R	179
VG221	049	WPL312	098	DP410('65)	136	B10	180
222	050	A121	099	DP410-L('65)	137	VB10	181
G222	051	VA121	100	P410-U('65)	138	B10-D	182