

## **Daf Dt615 Workshop Manual Engine**

Full download: <http://manualplace.com/download/daf-dt615-workshop-manual-engine/>

# **Workshop manual**

**DD 575**

**DF 615**

**DT 615**

**DAF Diesel**

Service Promotion

Subject to modification

## INTRODUCTION

This Repairs and Workshop Manual, which accompanies the DAF diesel engines of the 575 and 615 series, is intended for the workshops of our Service organisation. Likewise, these books are available for users who have the required special tools and skillful staff.

Our policy being one of continuous improvement and progress, it may happen that modifications to the engine have not been included in this manual.

However, new issues covering all modifications and including all supplements, will be published at regular intervals.

Should you have any questions regarding the engine or regarding the manual, please contact your DAF-Diesel dealer, who has the latest information available.

Finally, we shall be pleased to receive your remarks and comments upon this manual so as to enable us to continuously improve the quality of future issues. For this purpose you may use the enclosed service documentation information card (see section 0-05, page 1).

Please send this card, fully and clearly filled out, to your importer's address as mentioned on the enclosed list.

Many thanks!

DAF-DIESEL  
Service Promotion

February 1979.

**All information applies both to the DD575 and to the DF and DT615 engines unless otherwise stated.  
The specifications refer to brand-new parts.**

**SUBDIVISION**

GENERAL

**0**

ENGINES

**2**

COMPRESSOR

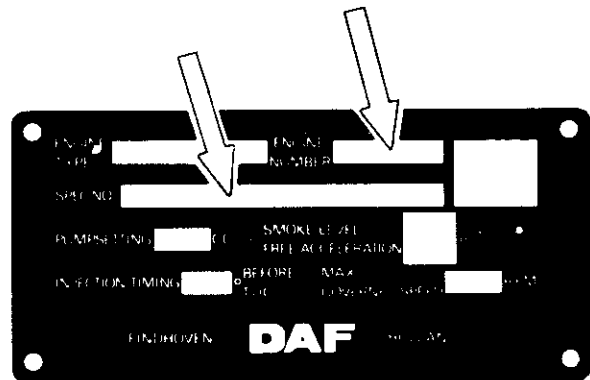
**6**

### CONTENTS

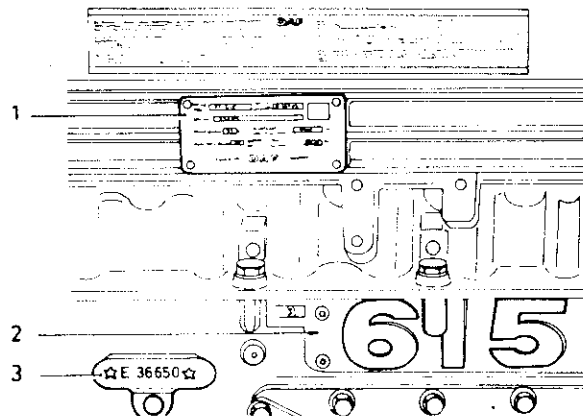
Subgroup	Subject	Page(s)
03	Ordering parts	1
05	Information card - service documentation	1 – 3

## ORDERING PARTS

When ordering parts make sure to mention not only the engine number but also and especially the specification numbers as mentioned on the identity plate on the valve cover.  
If these data are missing, it is impossible to guarantee a correct supply.



identity plate



1. identity plate
2. engine block type indication
3. location of engine number in the engine block

### CONTENTS

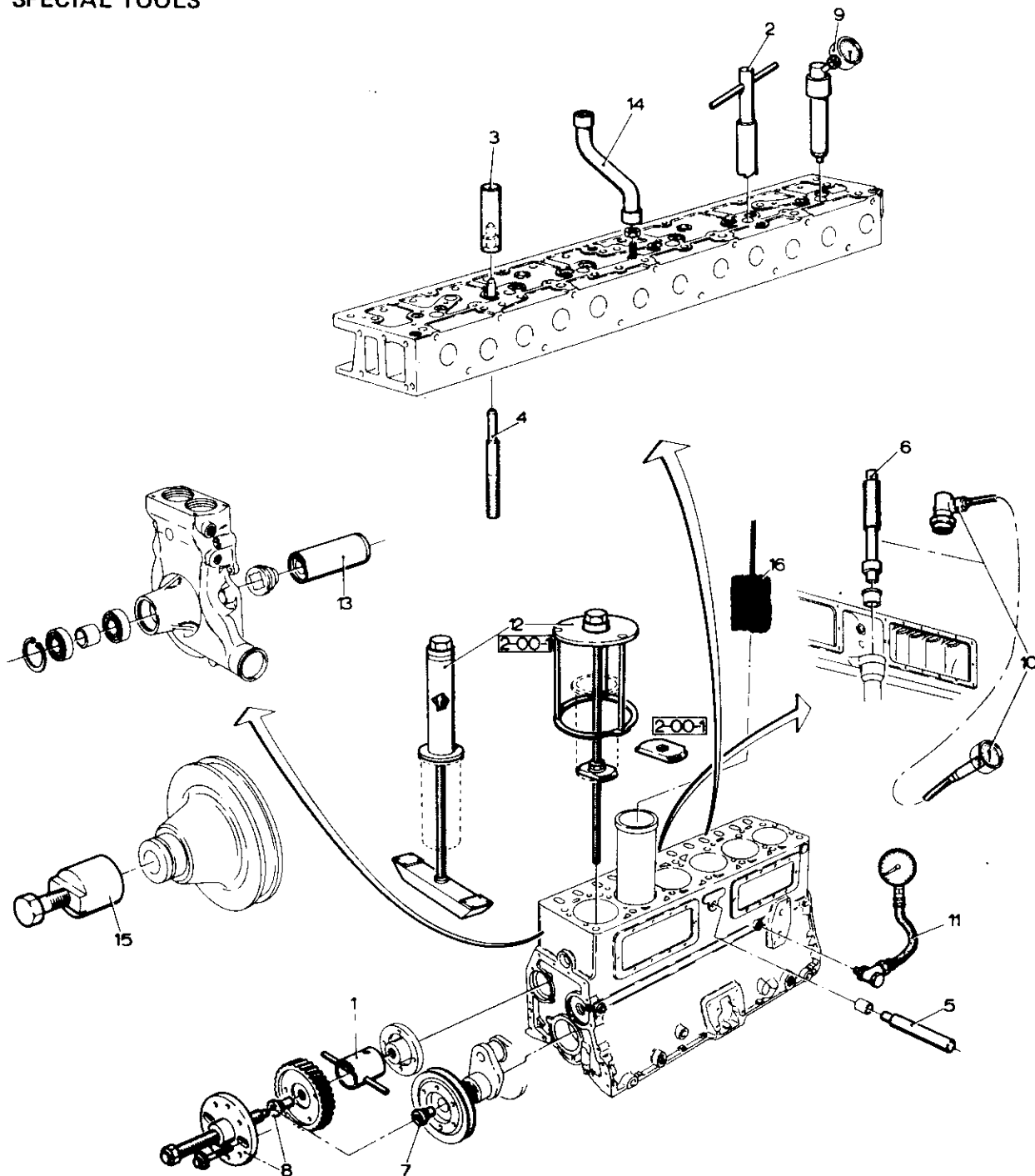
Subgroup	Subject	Page(s)
00	General:	
	Specifications	1
	Special tools	2-3
	Checks and adjustments	4
	Exhaust smoke measuring	5-7
10	Cylinder head	1-5
20	Valve gear	1-4
30	Vibration damper and pulleys	1-2
31	Engine block	1-6
32	Crankshaft, conrods and pistons	1-6
34	Flywheel and ring gear	1-3
35	Timing	1-4
36	Flywheel housing	1-2
38	Engine suspension	1-2
41	Lubrication system	1-8
51	Cooling system	1-16
61	Manifolds	1-4
63	Turbocharger	1-6

## GENERAL

### SPECIFICATIONS

Make	DAF
Type	Water-cooled diesel engine with direct injection DT615: equipped with a turbocharger
Number of cylinders	6
Bore	DD575: 100.6 mm, DF615 and DT615: 104.2 mm
Stroke	DD575, DF615 and DT615: 120.7 mm
Cubic capacity	DD575: 5.76 litres DF615 and DT615: 6.17 litres
Compression ratio	16 : 1
Valve clearance cold/warm	0.5 mm
Thread	to ISO standards
Dry weight, incl. accessories but without clutch	DD575: 530 kg, DF615: 530 kg, DT615: 570 kg
Firing order	1-5-3-6-2-4
Injection timing	28° before T.D.C. (DD575 and DT615) 26° before T.D.C. (DT615)
Injection pressure	DD575 and DT615: 165 - 173 bar DT615: 216 - 224 bar
Coolant operating temperature	75-80° C
Lubricating system	CC or CD, max. sulphated ash content 1.5%
Lubricant Viscosity, below 0° C	SAE 20
-5° to +30° C	SAE 30
above +25° C	SAE 40
Oil pressure to be measured at a coolant temperature of	75-80° C
at idling speed (new engine)	min. 1.0 bar
ditto (at wear)	min. 0.35 bar
at 2000 r.p.m.	3.5 - 4.2 bar
Capacity (incl. filter)	12 litres
ditto (incl. filter and cooler)	13 litres
ditto, double room sump	17 litres
Diesel fuel	Min. requirement British Standard no. 2869-1970 Class A2. Also refer to fuel system (fuel quality)
Starter motor	bipolar
Generator	A.C. - various versions

SPECIAL TOOLS



- |  |             |   |             |
|--|-------------|---|-------------|
| 1. Bush for camshaft thrust ring centring                  | 2-99-535047 | 9. Dummy injector, compression testing            | 2-99-535264 |
| 2. Hand cutter for cleaning injector seat in cylinder head | 2-99-535058 | 10. Auxiliary tool for measuring engine speed     | 2-99-535265 |
| 3. Drift for pressing in valve guides                      | 2-99-535073 | 11. Gauge, oil pressure testing complete          | 2-99-535551 |
| 4. Drift for pressing out valve guides                     | 2-99-535074 | 12. Tool for removing and fitting cylinder liners | 2-99-535625 |
| 5. not applicable  |             | 13. Drift, waterpump seal                         | 2-99-535655 |
| 6. Drift, oil pump shaft bush                              | 2-99-535076 | 14. Bent box spanner                              | 2-99-535704 |
| 7. Spacer, camshaft puller                                 | 2-99-535077 | 15. Puller for removing water pump pulley         | 2-99-535956 |
| 8. Puller, removing crankshaft pulley and camshaft gear    | 2-99-535144 | 16. Honing tool for cylinder liner                | 2-99-535948 |