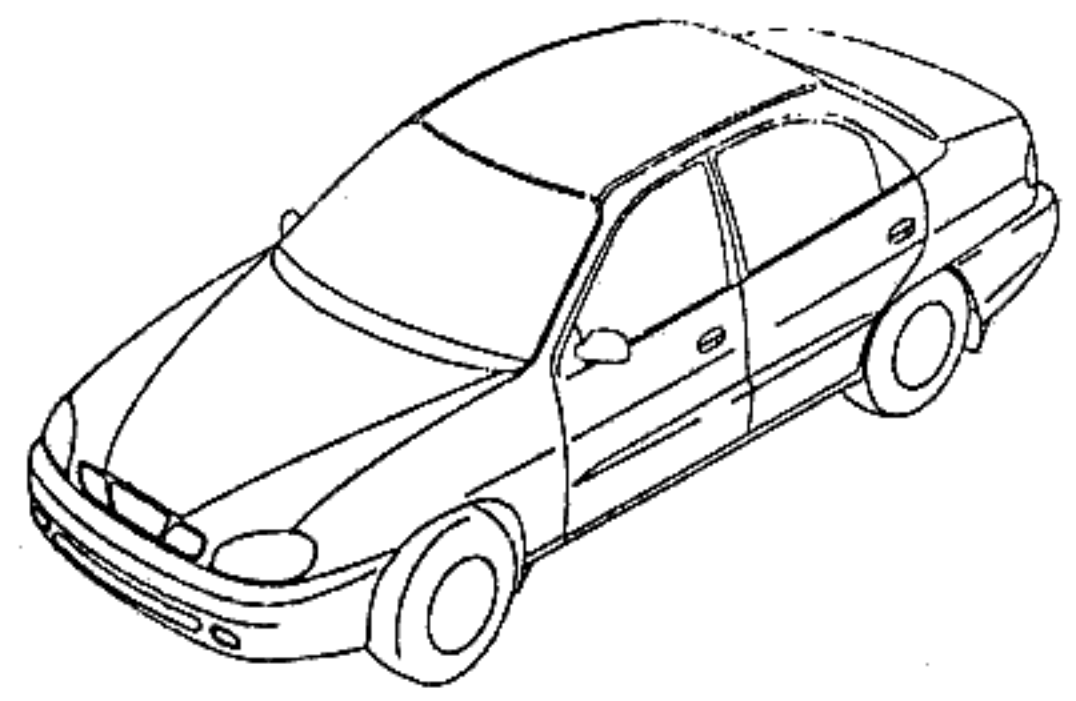
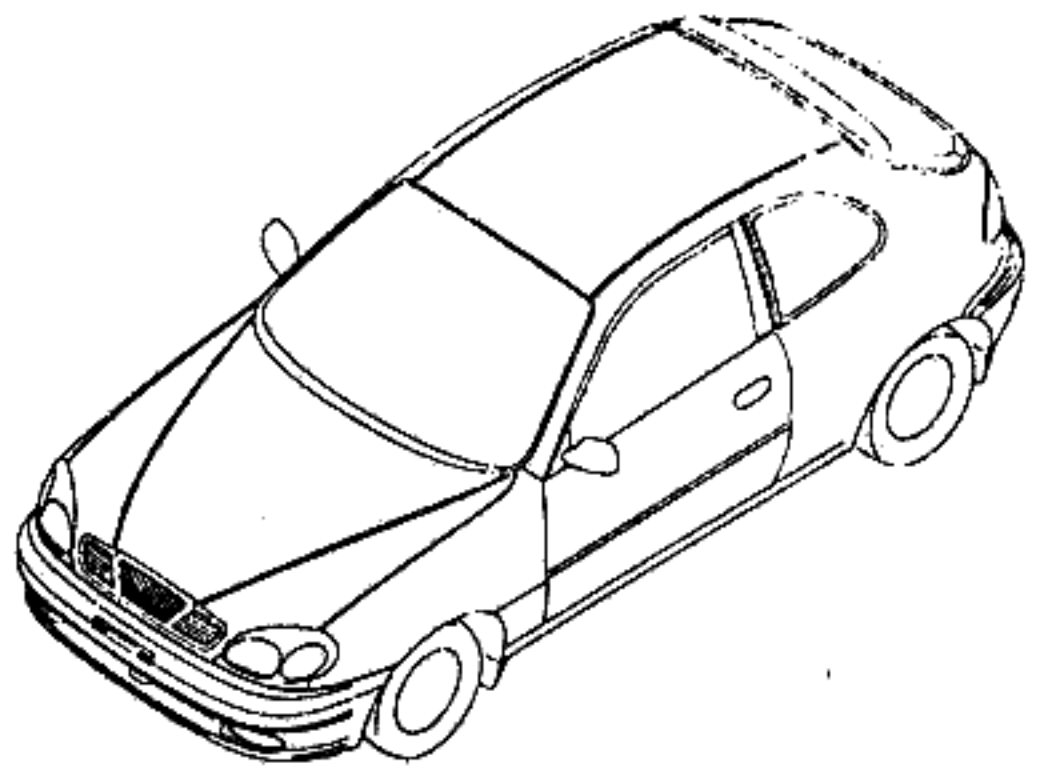


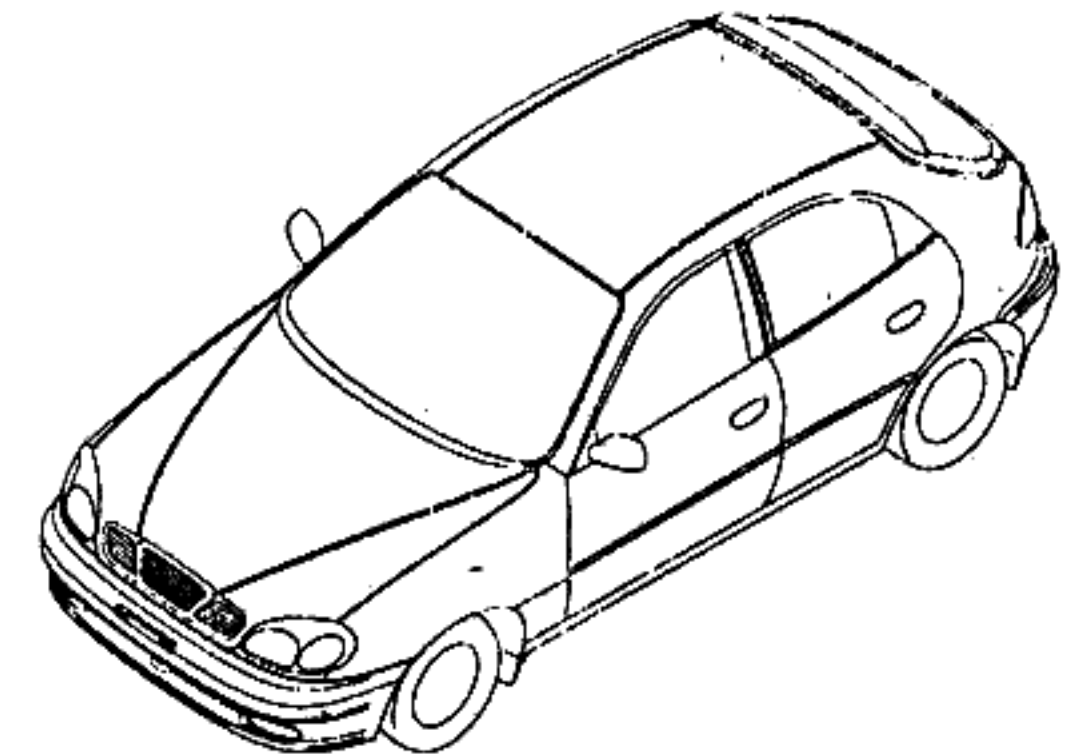
# I. GENERAL VIEW



**4-DOOR NOTCH BACK**



**3-DOOR HATCH BACK**



**5-DOOR HATCH BACK**

## II. MODEL & OPTION

### 1. MODEL

ENGINE	T/A	BODY	LEVEL
Y / 6	M / A	4N / 3H / 5H	S / SE / SX

#### ■ ENGINE TYPE

- Y : 1.5L SOHC
- 6 : 1.6L DOHC
- . : Common

#### ■ T/A(TRANSAXLE)TYPE

- M : Manual T/A
- A : Automatic T/A
- . : Common

#### ■ BODY TYPE

- 4N : 4 Door Notchback
- 3H : 3 Door Hatchback
- 5H : 5 Door Hatchback

NOTE : Please be sure to read "the EXPLANATION OF CATALOG COMPOSITION" to find out the details on "the MODEL COLUMN".

### 2. OPTION

CODE	DESCRIPTION	BODY			LEVEL		
		4 N	3 H	5 H	S	S E	S X
A31	Window-power,front&rear	B	.	B	.	O	O
A32	Window-power,front	B	B	B	O	O	B
ABF	Air bag-dual	B	B	B	.	O	O
AJ3	Air bag-driver side only	B	B	B	.	O	O
AU3	Central door lock	B	B	B	O	O	B
C59	Uncompleted Air conditioner	B	B	B	O	O	O
C60	Air conditioner	B	B	B	O	O	O
CF6	Sun roof,power	B	B	B	O	O	O
JL9	Antilock brake system	B	B	B	.	O	O
ML4	4 speed automatic T/A	B	B	B	O	O	O
N40	Power steering	B	B	B	O	O	B
PG4	Alloy wheel,5.5JX14	B	B	B	.	.	O
T45	Rear spoiler	.	B	B	.	.	O
U83	Speaker-coaxial 2 way	B	B	B	.	O	O
UNA	Cassette(mech), 7wX2ch(AKF-4331)	B	B	B	O	O	O
UN1	Cassette(mech),25wX2ch(AKF-4036)	B	B	B	O	O	O
UN6	Cassette(logic) ,25wX4ch(AKF-0816)	B	B	B	.	O	O
W8V	CD player	B	B	B	.	O	O

- O : OPTION
- B : BASE
- . : NOT APPLICABLE

### III. COLOR CODE TABLE

When order the color parts, the color code should be quoted.

EXTERIOR COLOR		INTERIOR COLOR
CODE	DESCRIPTION	
11U	GALAXY WHITE	GREY
21U	AZURITE BLUE	GREY
27U	VIOLET BLUE	GREY
42U	DEEP BLUISH GREEN	GREY
43U	LIGHT EVERGREEN	GREY
73L	SUPER RED	GREY
74U	SPINEL RED	GREY
81U	STREAMLINE GREY	GREY
83L	GRANADA BLACK	GREY
92U	POLY SILVER	GREY

### ⑧ MODEL

This column indicates Engine type, Transaxle type, Body type, Trim level.

#### ■ ENG(ENGINE) TYPE

- Y : 1.5L SOHC
- 6 : 1.6L DOHC
- . : COMMON

#### ■ T/A(TRANSAXLE)TYPE

- M : Manual T/A
- A : Automatic T/A
- . : Common

#### ■ BODY TYPE

- 4N : 4 Door Notchback
- 3H : 3 Door Hatchback
- 5H : 5 Door Hatchback

"BODY" column indicates the expression of applicable body type.

- B : Applicable
- . : Not applicable

#### ■ TRIM LEVEL

- S
- SE
- SX

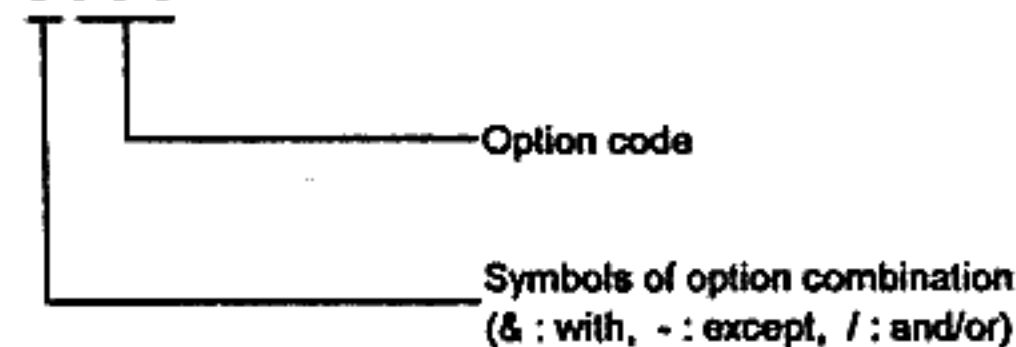
"LEVEL" column indicates the expression of applicable trim level.

- S : Standard equipment.
- O : Option equipment.
- A : Available equipment for the special package according to the area regulation

### ⑨ OPTION

This column indicates option code.  
Refer to "VI.OPTION CODE TABLE"

ex) O O O O



### ⑩ L/R

This column indicates the mounting position of a part.

- LH : Left hand side
- RH : Right hand side

### ⑪ QTY

This column indicates the quantity required per sub-group.  
The quantity is normally shown by number or symbol as below.  
A : As required quantity.

### ⑫ EFFECTIVE DATE

This column indicates effective "date in production".  
It is shown by the year, month and date or start of production(S.O.P).

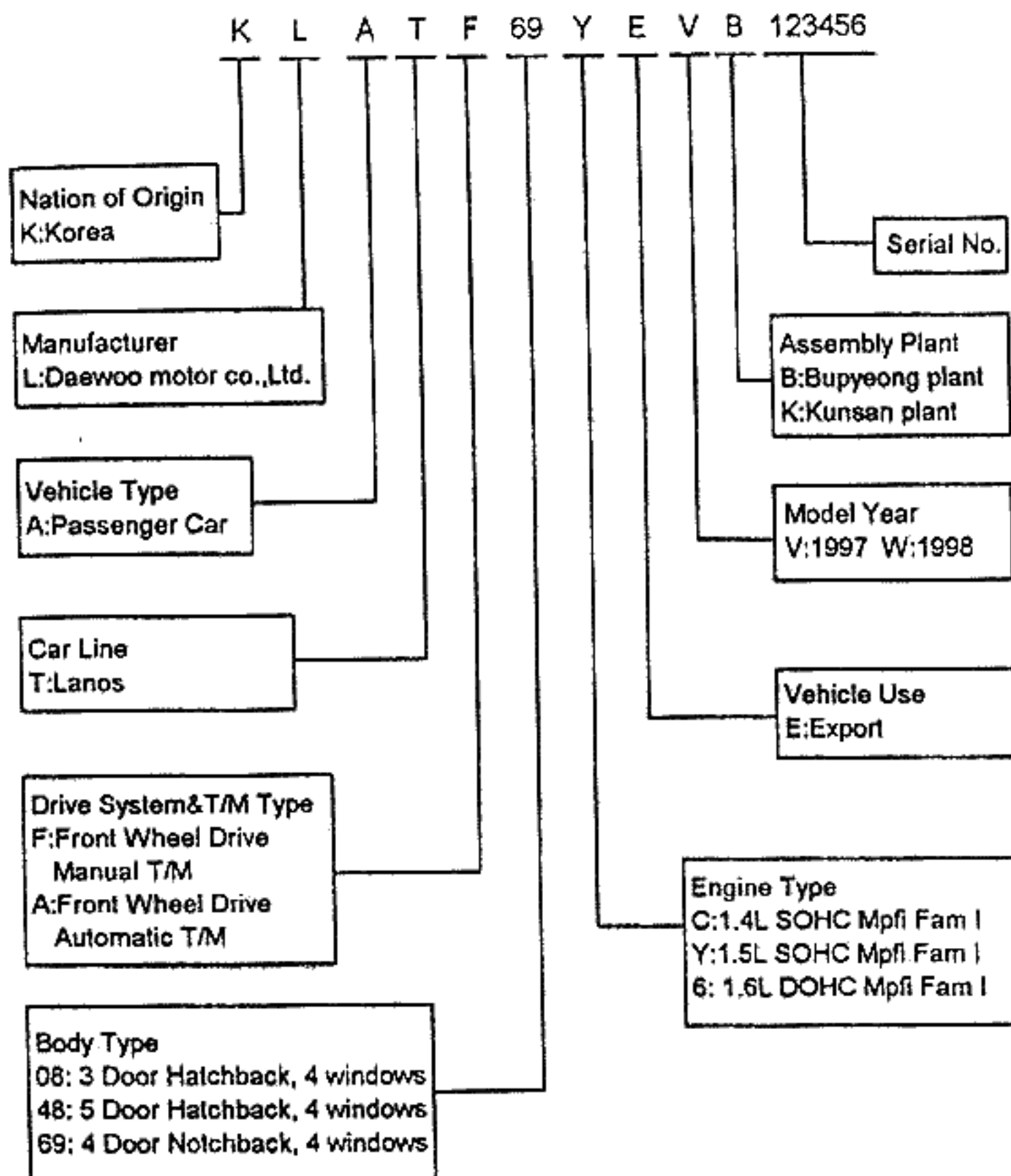
### ⑬ REMARKS

Supplementary or reference information is given in this column.  
(examples)  
Specification, Use, Type, Applicable country etc.

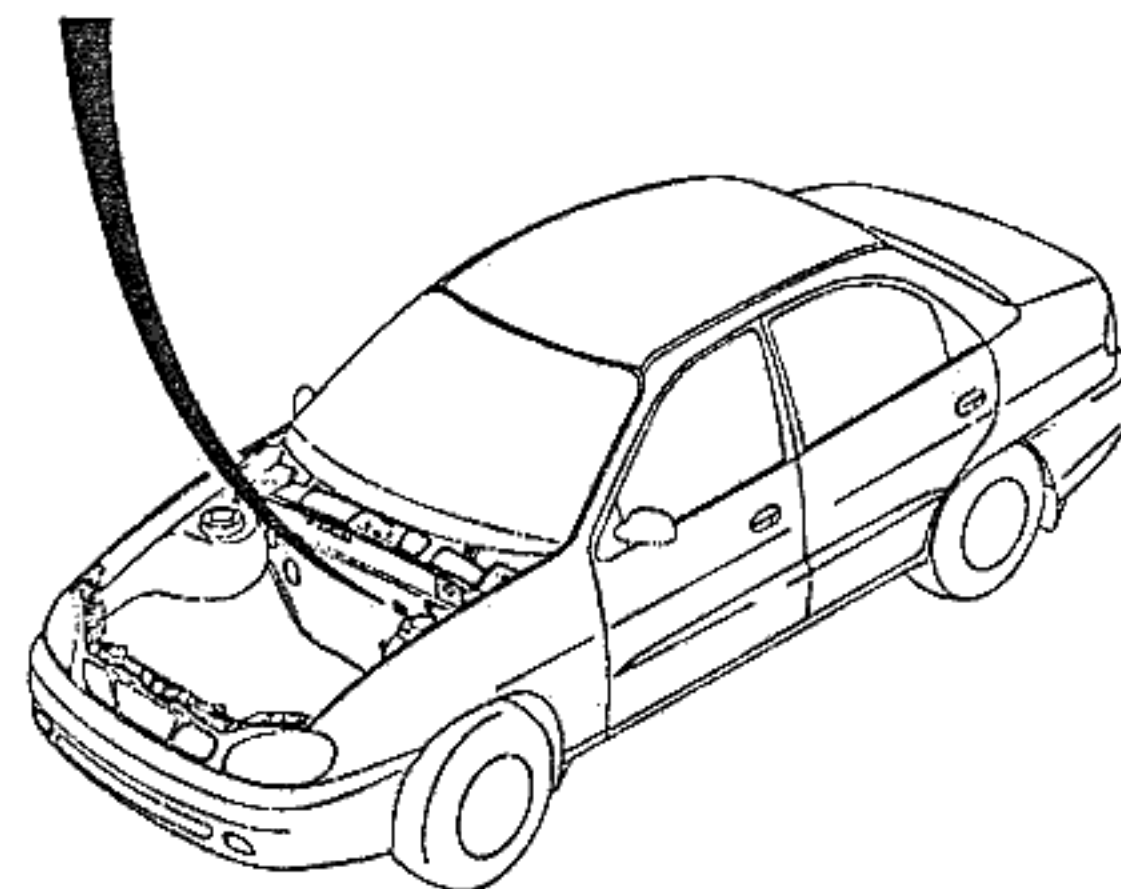
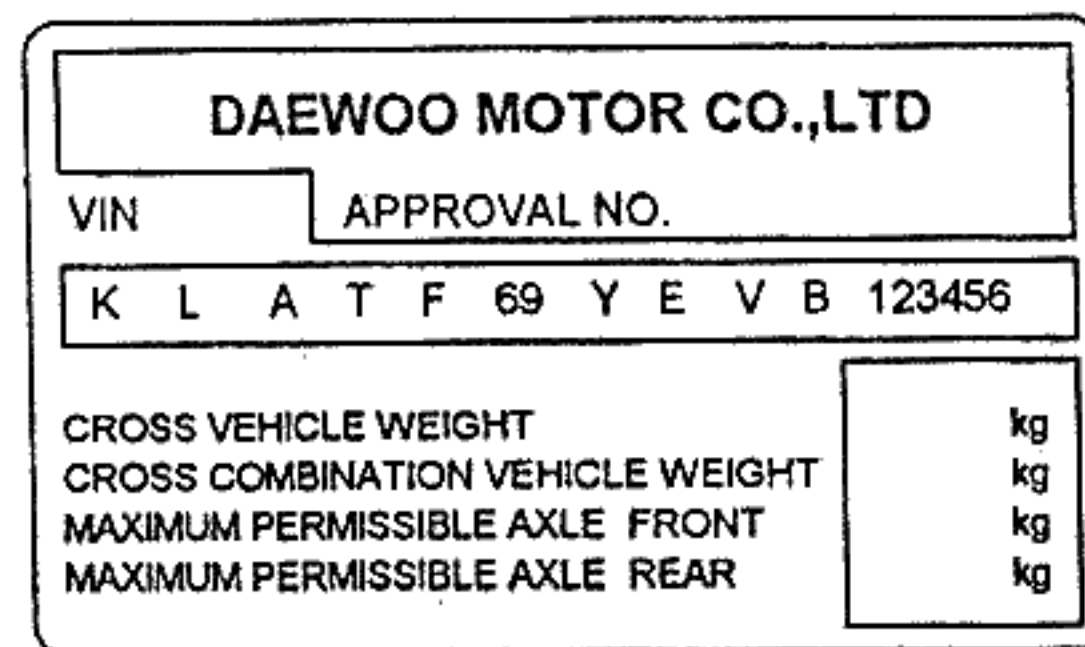
### ⑭ PART IDENTIFICATION CODE

This column indicates part identification code that is marked with two characters.  
Part identification code will help you in discriminating a part easily.  
But, all parts will not always carry the part identification code.

### V. CONSTRUCTION OF VEHICLE IDENTIFICATION NUMBER

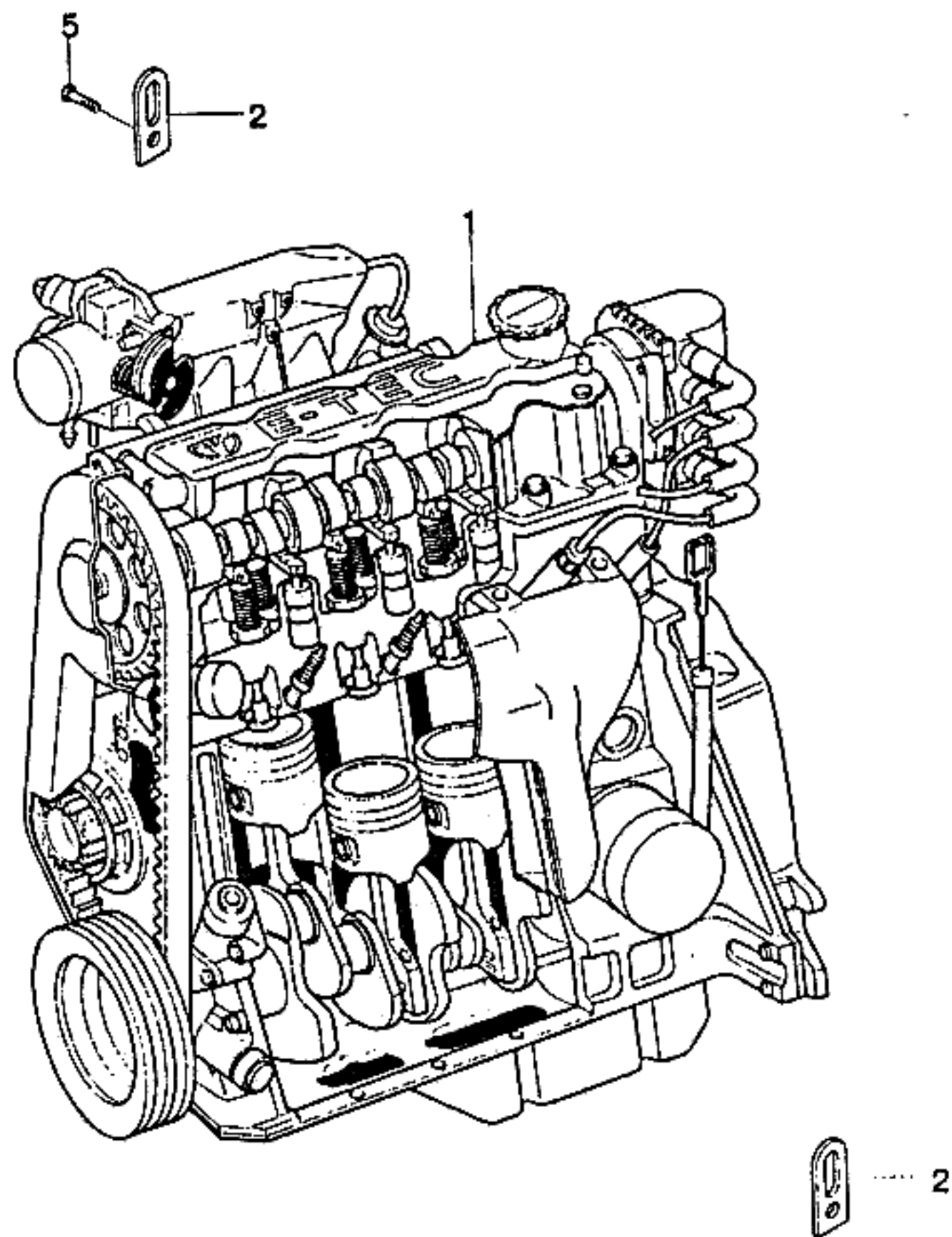


### LOCATION OF VEHICLE IDENTIFICATION NUMBER



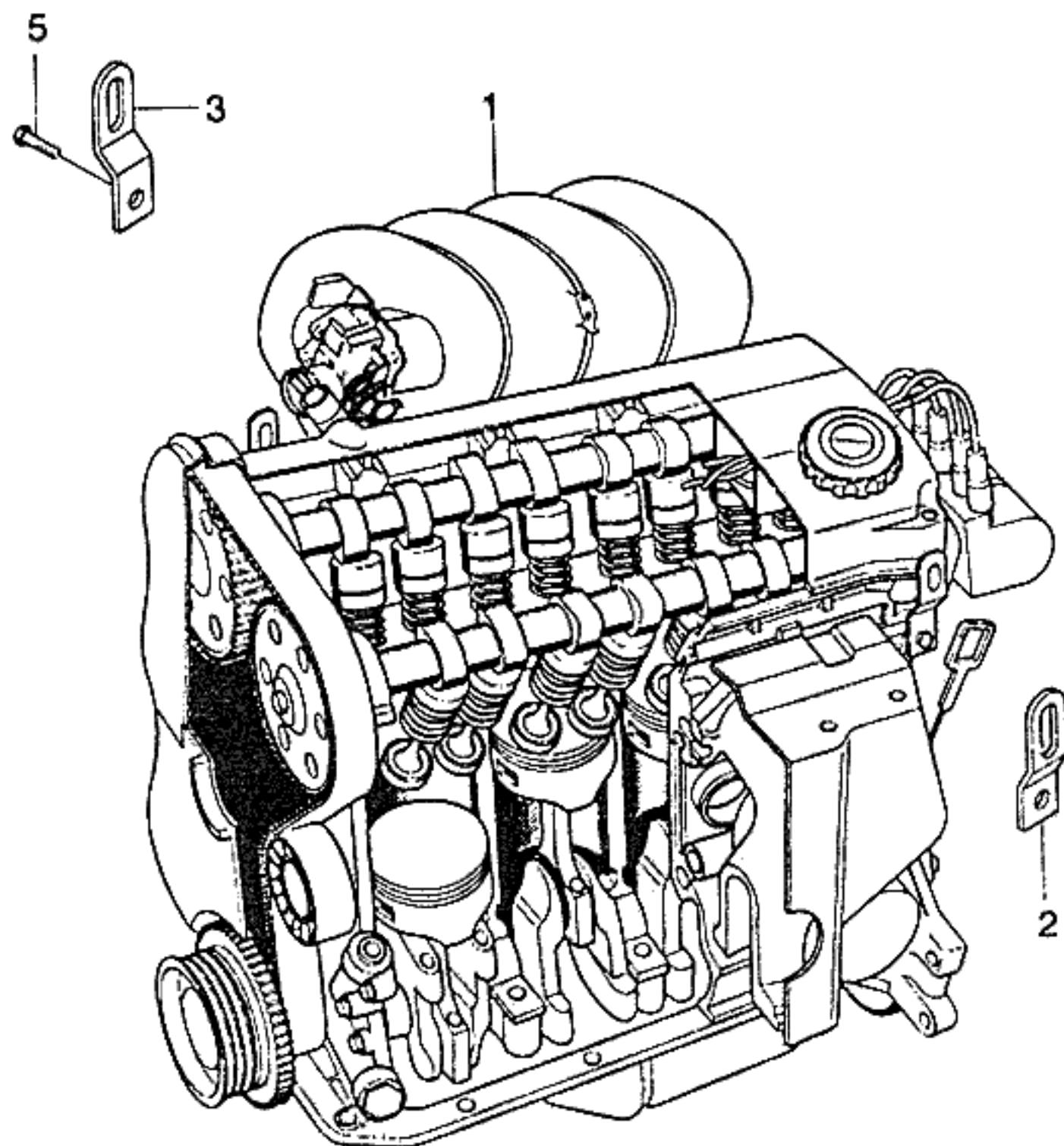
**1****ENGINE**

1110	ENGINE UNIT(SOHC)	1650	RADIATOR HOSE&PIPE(SOHC)
1111	ENGINE UNIT(DOHC)	1651	RADIATOR HOSE&PIPE(DOHC)
1120	SHORT ENGINE	1680	THERMOSTAT(SOHC)
1130	BELT SYSTEM	1681	THERMOSTAT(DOHC)
1140	REPAIR KIT(SOHC)	1690	OIL COOLER PIPE(A/T)
1141	REPAIR KIT(DOHC)	1710	IGNITION CABLE(SOHC)
1210	ENGINE BLOCK	1711	IGNITION CABLE(DOHC)
1220	CRANKSHAFT&PISTON	1740	ALTERNATOR UNIT(12V,85A)
1230	OIL PAN&PUMP	1741	ALTERNATOR UNIT(12V,95A)
1240	ENGINE OIL VENTILATION	1750	ALTERNATOR MOUNT(SOHC)
1310	CYLINDER HEAD(SOHC)	1751	ALTERNATOR MOUNT(DOHC)
1311	CYLINDER HEAD(DOHC)	1760	STARTER(0.8KW)
1320	CAM SUPPORT&SHAFT(SOHC)	1761	STARTER(1.4KW)
1321	CAM SUPPORT&SHAFT(DOHC)	1910	ENGINE MOUNT
1330	TIMING COVER(SOHC)		
1331	TIMING COVER(DOHC)		
1610	RADIATOR		
1630	COOLING FAN		



I T C	KEY NO.		PART NAME										P I C O D E
	PART NO	E N G	MODEL			OPTION	L / R	Q T Y	EFFECTIVE DATE		REMARKS		
			4 N	3 H	5 H				S S	S S		FROM	
	[01]	(E)ENGINE A (D)MOTOR										(F)MOTEUR (S)MOTOR	
	96184293	Y M B B B S S S				&NN4-XCA						1	HF
	96352333	Y M B B B A A A				&NN4&XCA						1	H2
	96184301	Y M B B B A A A				&NN6-XCA						1	HB
	96352331	Y M B B B A A A				&NN6&XCA						1	H8
	96350294	Y M B B B A A A				&NN7-XCA						1	HJ
	96352335	Y M B B B A A A				&NN7&XCA						1	H6
	96184297	Y A B B B O O O				&NN4-XCA						1	HH
	96352334	Y A B B B A A A				&NN4&XCA						1	H3
	96184305	Y A B B B A A A				&NN6-XCA						1	HD
	96352332	Y A B B B A A A				&NN6&XCA						1	H9
	96350292	Y A B B B A A A				&NN7-XCA						1	HL
	96352336	Y A B B B A A A				&NN7&XCA						1	H7
	[02]	(E)SHACKLE-ENGINE TRANSPORT (D)HALTER,MOTOR TRANSPORT										(F)BRIDES-TRANSPORT (S)GRILLETE-TRANSPORTE	
	90076951	Y . B B B S S S										2	
	[05]	(E)BOLT (D)SCHRAUBE										(F)BOULON (S)PERNO	
	02865535	Y . B B B S S S										1	M8X22
ENG(ENGINE)			T/A(TRANSAXLE)				BODY TYPE						
Y = 1.5SOHC 6 = 1.6DOHC . = COMMON			M = MANUAL T/A A = AUTOMATIC T/A . = COMMON				4 N = 4 DOOR NOTCHBACK 3 H = 3 DOOR HATCHBACK 5 H = 5 DOOR HATCHBACK						





KEY NO.	PART NAME													
	PART NO	MODEL						OPTION	L / R	QTY	EFFECTIVE DATE		REMARKS	P / CODE
		E	T	BODY			LEVEL				FROM	TO		
N	G	4	3	5	S	S	S							
[01]	(E)ENGINE A (D)MOTOR										(F)MOTEUR (S)MOTOR			
96350534	6 M B B B . . O						&NN4-XHA		1				UB	
96352343	6 M B B B . . A						&NN4&XHA		1				U2	
96352351												NOT APPLIED		
96352339												NOT APPLIED		
96184154	6 M B B B . . A						&NN7-XHA		1				UJ	
96352347	6 M B B B . . A						&NN7&XHA		1				U6	
96352477												NOT APPLIED		
96352761	6 M B B B . . A						&KL9		1			FOR BRAZIL	G2	
96350538	6 A B B B . . O						&NN4-XHA		1				UF	
96352345	6 A B B B . . A						&NN4&XHA		1				U3	
96352353												NOT APPLIED		
96352341												NOT APPLIED		
96184157	6 A B B B . . A						&NN7-XHA		1				UN	
96352349	6 A B B B . . A						&NN7&XHA		1				U7	
96352479												NOT APPLIED		
96352763	6 A B B B . . A						&KL9		1			FOR BRAZIL	G3	
[02]	(E)SHACKLE-ENGINE TRANSPORT (D)HALTER,MOTOR TRANSPORT										(F)BRIDES-TRANSPORT (S)GRILLETE-TRANSPORTE			
5094021004	6 . B B B . . O								1					
[03]	(E)SHACKLE-ENGINE TRANSPORT (D)HALTER,MOTOR TRANSPORT										(F)BRIDES-TRANSPORT (S)GRILLETE-TRANSPORTE			
96130851	6 . B B B . . O								1					
[05]	(E)BOLT (D)SCHRAUBE										(F)BOULON (S)PERNO			

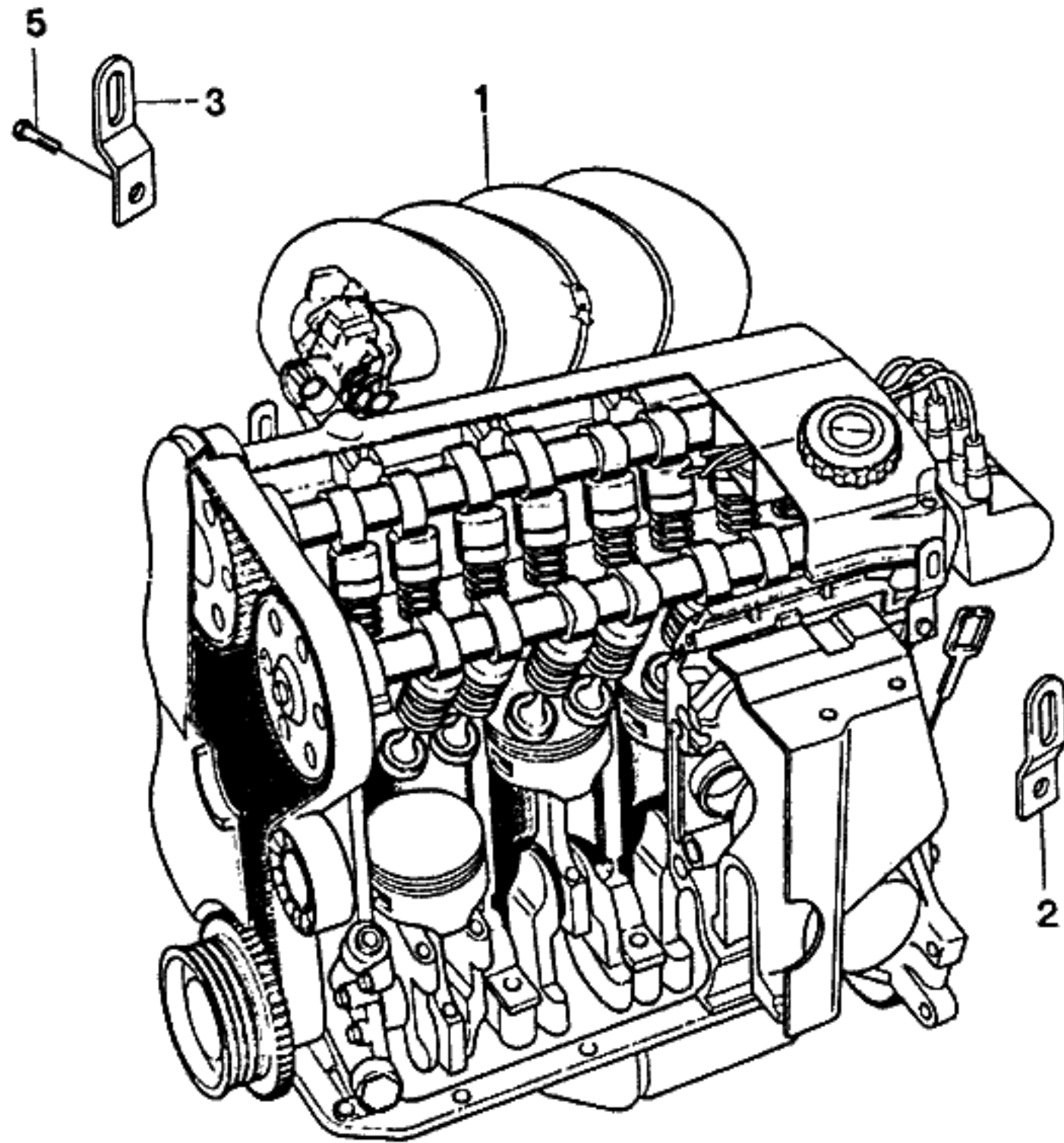
  

ENG(ENGINE)	T/A(TRANSAXLE)	BODY TYPE
Y = 1.5SOHC 6 = 1.6DOHC . = COMMON	M = MANUAL T/A A = AUTOMATIC T/A . = COMMON	4 N = 4 DOOR NOTCHBACK 3 H = 3 DOOR HATCHBACK 5 H = 5 DOOR HATCHBACK

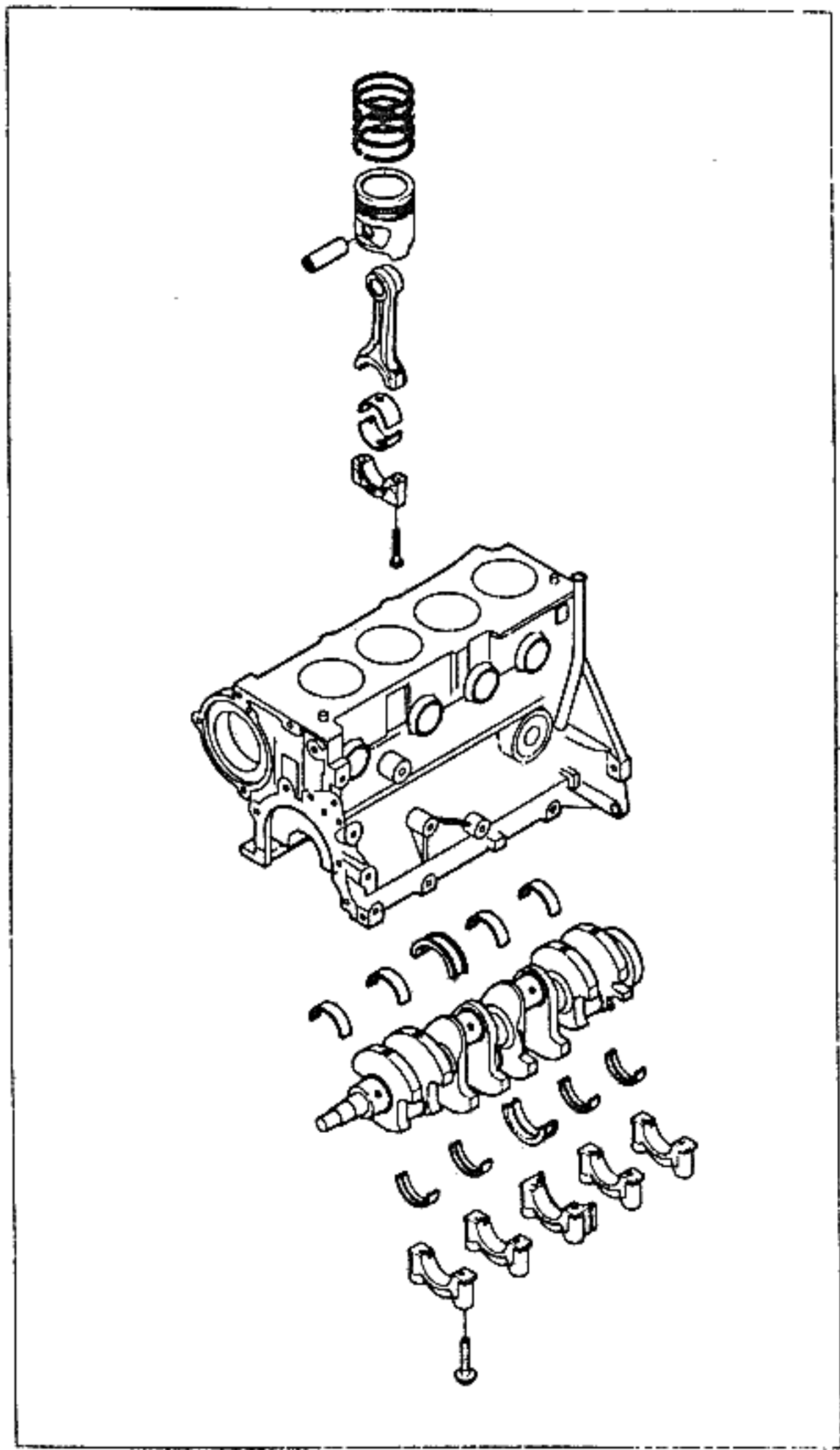


# 11 ENGINE UNIT(DOHC)

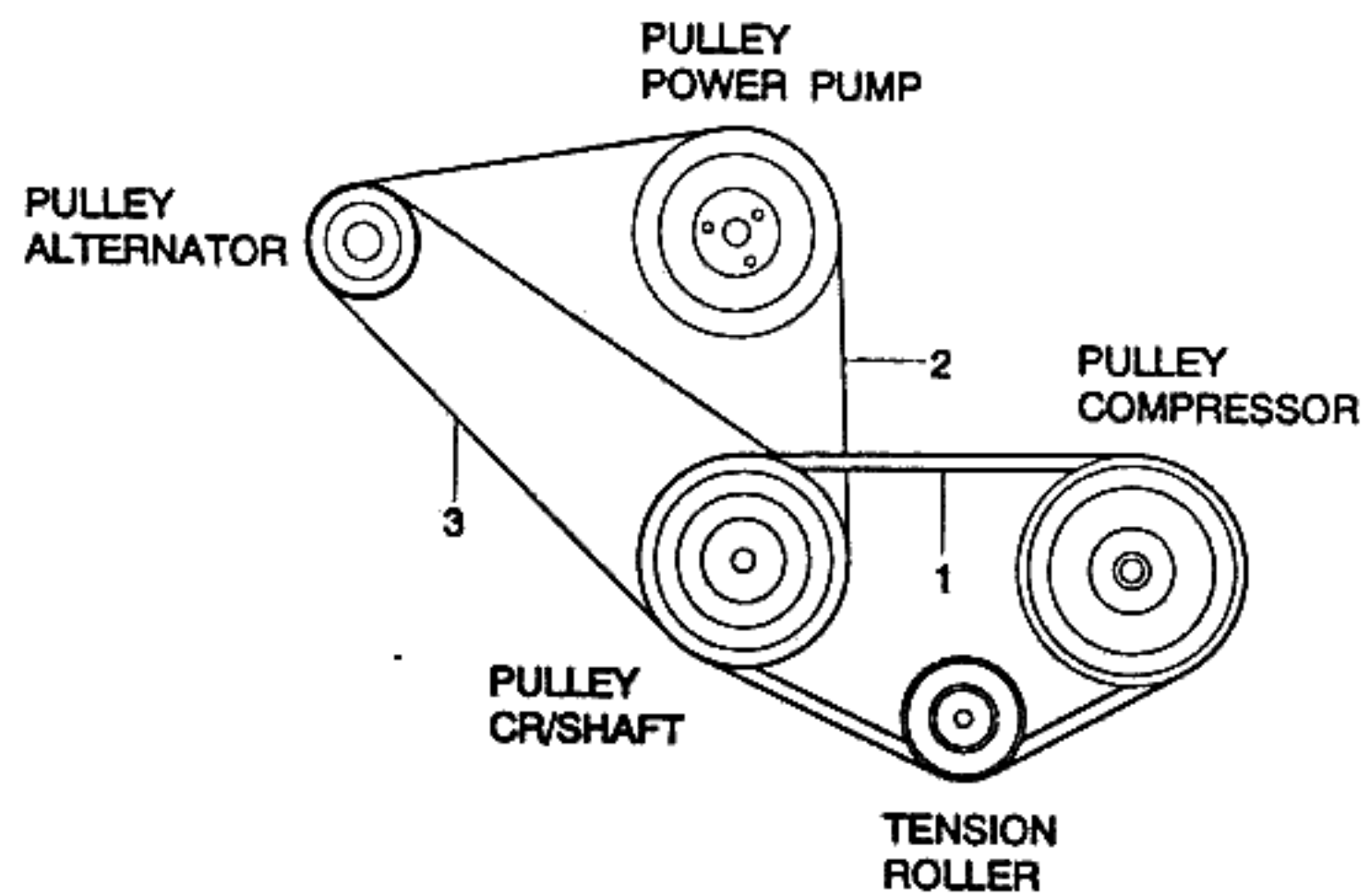
3D05



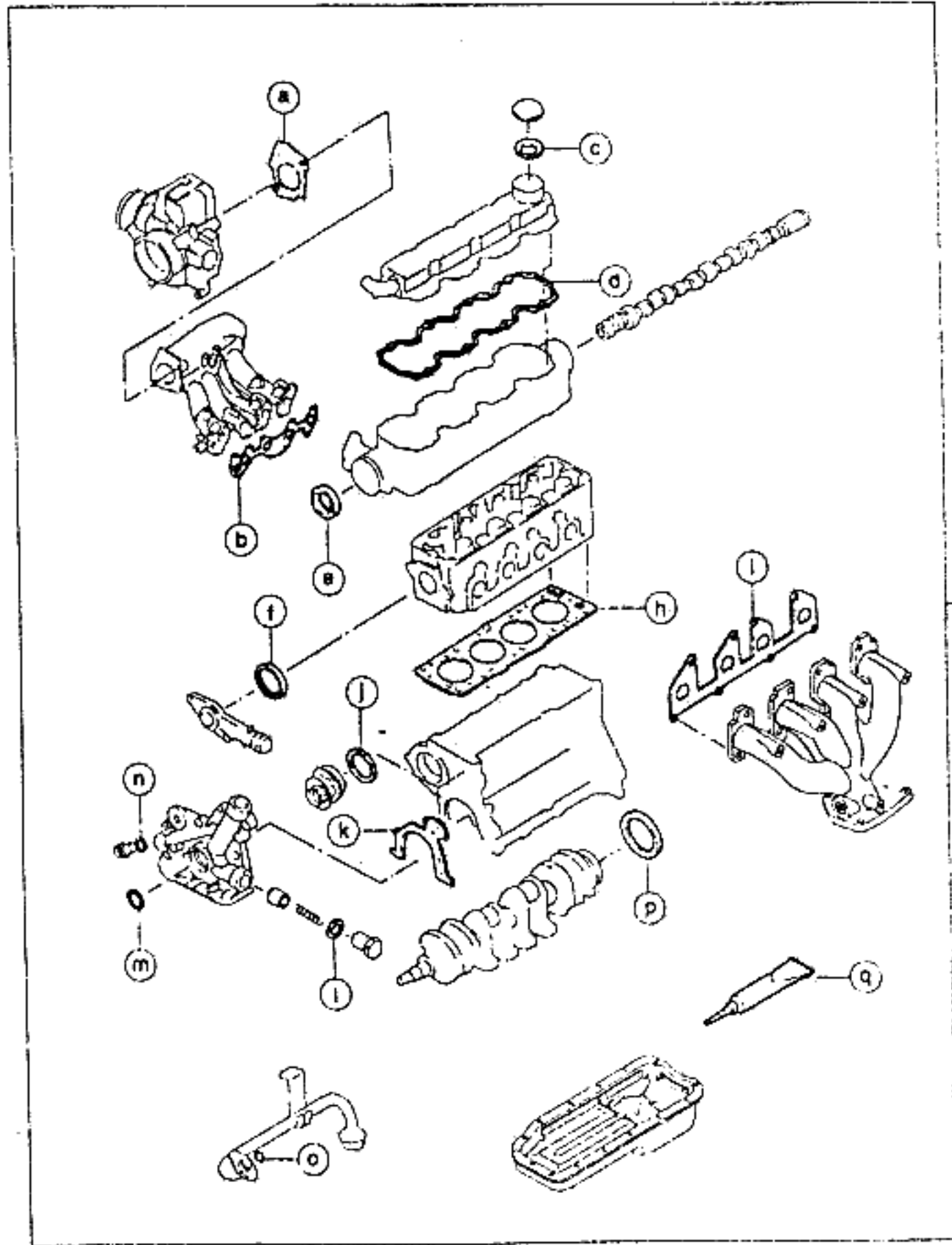
KEY NO.		PART NAME													
I T C	PART NO	MODEL						OPTION	L / R	Q T Y	EFFECTIVE DATE		REMARKS	P / C O D E	
		E N G	T / A	BODY			LEVEL				FROM	TO			
				4 N H	3 H	5 H	S								S E
	09117-08011	6	.	B	B	B	.	.	.	O			1		
ENG(ENGINE)		T/A(TRANSAXLE)			BODY TYPE										
Y = 1.5SOHC 6 = 1.6DOHC . = COMMON		M = MANUAL T/A A = AUTOMATIC T/A . = COMMON			4 N = 4 DOOR NOTCHBACK 3 H = 3 DOOR HATCHBACK 5 H = 5 DOOR HATCHBACK										



KEY NO.		PART NAME														
I T C	PART NO	MODEL						OPTION	L / R	Q T Y	EFFECTIVE DATE		REMARKS	P / C O D E		
		E N G	T / A	BODY			LEVEL				FROM	TO				
				4 N	3 H	5 H	S								S	S
	[01]	(E)SHORT BLOCK A (D)KURZ BLOCK									(F)BLOC COURT (S)BLOQUE CORTO					
	A96184803Y	Y	M	B	B	B	S	S	S			1				
	A96184804Y	Y	A	B	B	B	O	O	O			1				
	A96184805W	6	M	B	B	B	.	.	O			1				
	A96184806W	6	A	B	B	B	.	.	O			1				
ENG(ENGINE)		T/A(TRANSAXLE)				BODY TYPE										
Y = 1.5SOHC 6 = 1.6DOHC . = COMMON		M = MANUAL T/A A = AUTOMATIC T/A . = COMMON				4 N = 4 DOOR NOTCHBACK 3 H = 3 DOOR HATCHBACK 5 H = 5 DOOR HATCHBACK										



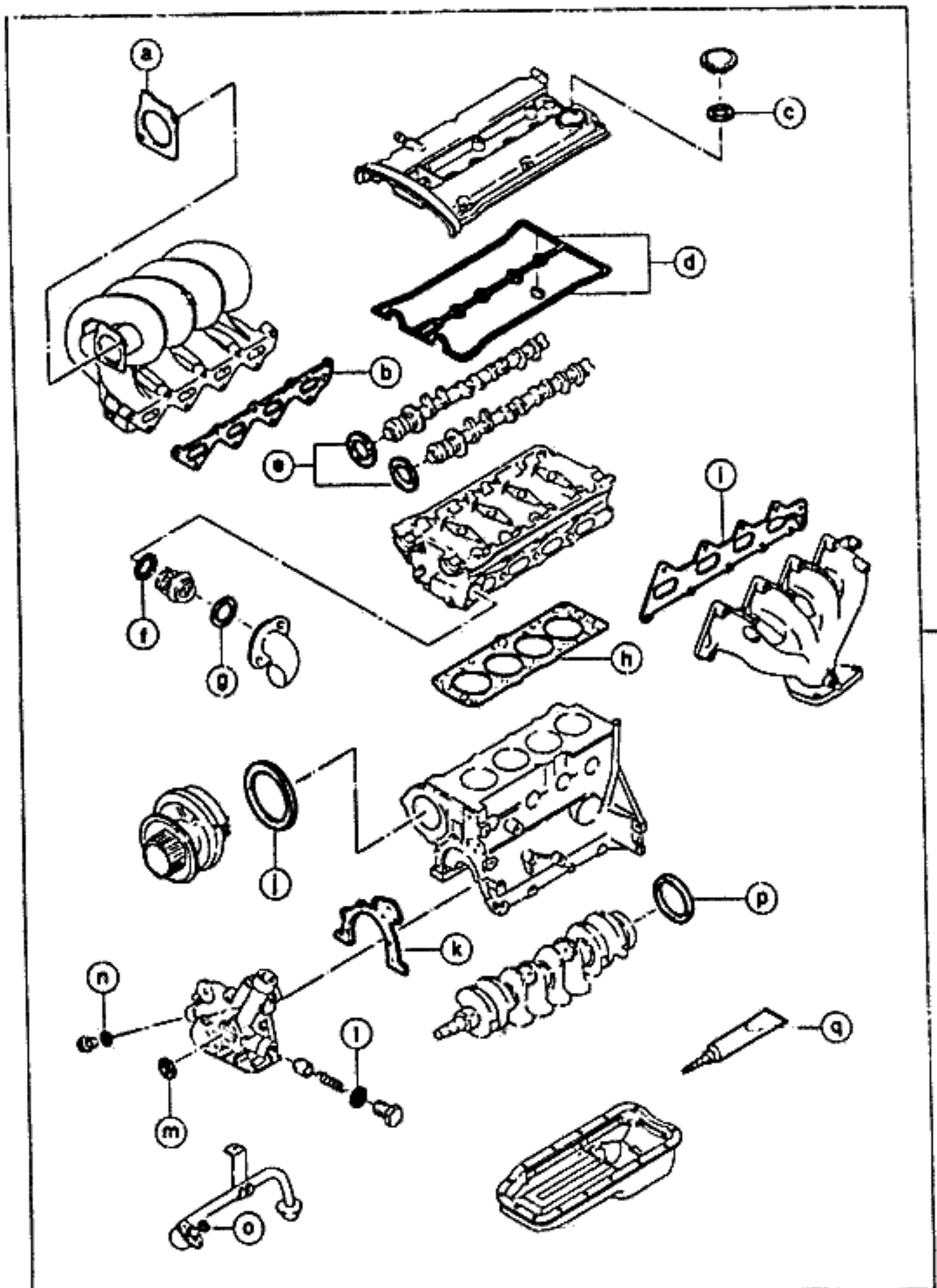
KEY NO.		PART NAME													
I T C	PART NO	MODEL						OPTION	L / R	Q T Y	EFFECTIVE DATE		REMARKS	P / C O D E	
		E N G	T / A	BODY			LEVEL				FROM	TO			
				4 N	3 H	6 H	S S								S E
	[01]	(E)V BELT (D)V GURT									(F)COURROIE EN V (S)CORREA V				
	96350467	. . .	B	B	B	O	O	O	&C60		1	840mm			
	[02]	(E)V BELT (D)V GURT									(F)COURROIE EN V (S)CORREA V				
	96144933	Y . . .	B	B	B	O	O	S	&N40-XHA		1	970mm			
	96352454	Y . . .	B	B	B	A	A	A	&N40&XHA		1				
	96144934	6 . . .	B	B	B	.	.	O	&N40-XHA		1	1008mm			
	96352455	6 . . .	B	B	B	.	.	A	&N40&XHA		1				
	[03]	(E)V BELT (D)V GURT									(F)COURROIE EN V (S)CORREA V				
	96144932	. . .	B	B	B	S	S	.	&N51-XHA		1	925mm			
	96352456	. . .	B	B	B	A	A	.	&N51&XHA		1				
ENG(ENGINE)		T/A(TRANSAXLE)				BODY TYPE									
Y = 1.5SOHC 6 = 1.6DOHC . = COMMON		M = MANUAL T/A A = AUTOMATIC T/A . = COMMON				4 N = 4 DOOR NOTCHBACK 3 H = 3 DOOR HATCHBACK 5 H = 5 DOOR HATCHBACK									



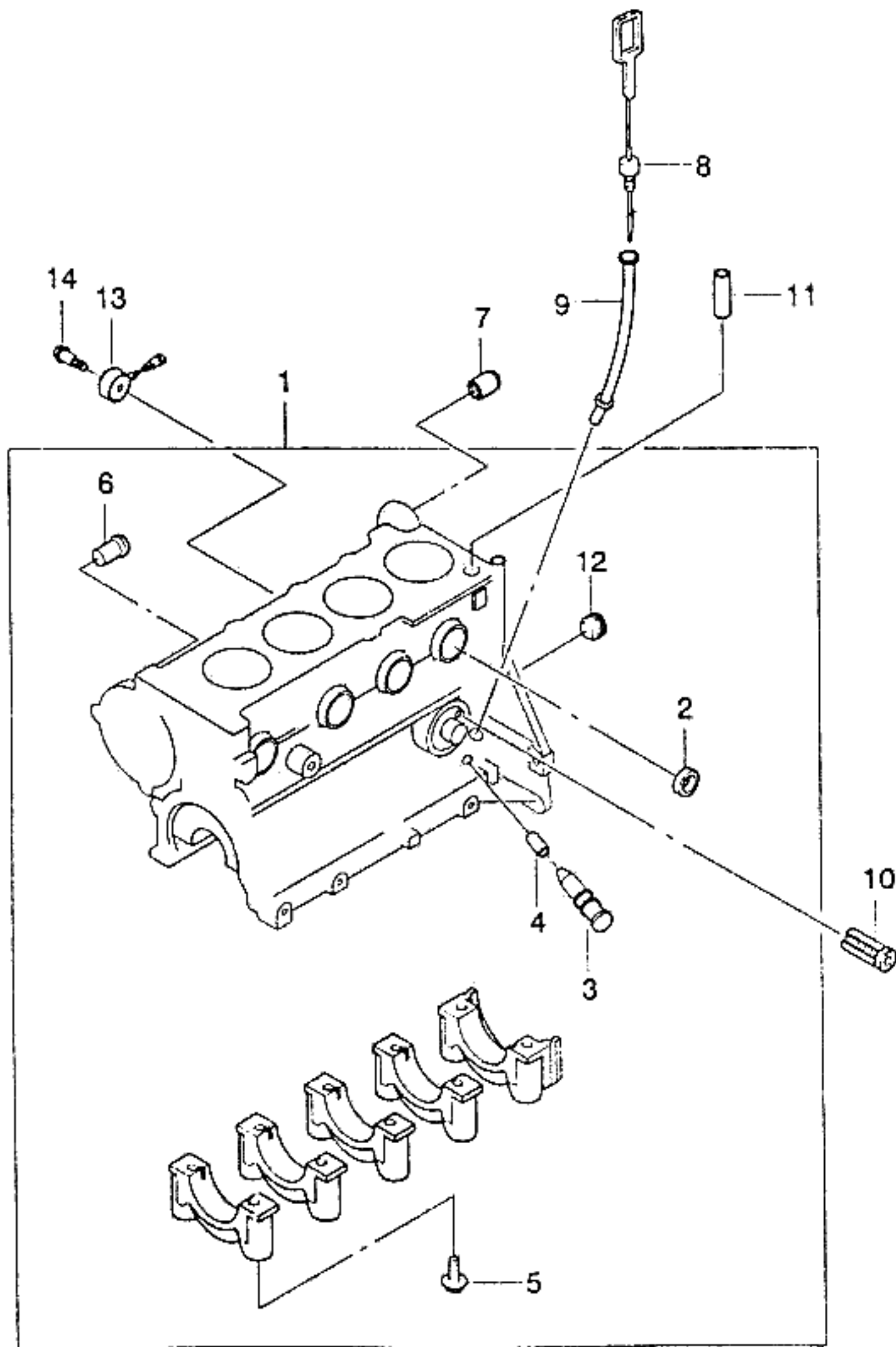
KEY NO.	PART NAME										REMARKS	P / CODE
	PART NO	MODEL				OPTION	L / R	Q / Y	EFFECTIVE DATE			
		E N G	T / A	BODY	LEVEL				FROM	TO		
[01] S1140005	(E)GASKET KIT-ENG OVERHAUL (D)DICHTUNGS-SATZ, ÜBERHOLUNG Y . B B B S S S									(F)JEU DE JOINTS (S)JUEGO DE JUNTA		
	- CONSIST OF -											
	Ⓐ : GASKET-THROTTLE BODY									1		REFER TO BELOW
	Ⓑ : GASKET-INTAKE MANIFOLD									1		2210-02
	Ⓒ : SEAL-BAYONET CAP									1		2430-02
	Ⓓ : GASKET- CAMSHAFT SUPT CVR									1		1320-02
	Ⓔ : RING-CAMSHAFT SEAL									1		1320-05
	Ⓚ : RING-THER. HOUSING SEAL									1		1320-11
	Ⓛ : GASKET-CYLINDER HEAD									1		1680-02
	Ⓜ : GASKET-EXH. MANIFOLD									1		1310-22
	Ⓝ : RING-CYL BLOCK SEAL									1		2440-02
	Ⓟ : GASKET-OIL PUMP BODY									1		1330-02
	Ⓞ : RING-OIL PUMP SEAL									1		1230-11
	Ⓠ : RING-CRANKSHAFT SEAL									1		1230-05
	Ⓡ : WASHER-PLAIN									1		1230-02
	Ⓢ : RING-SEAL									1		1230-15
	Ⓣ : RING-CRANKSHAFT SEAL									1		1230-20
	Ⓤ : GASKET-OIL PAN									1		1220-09
												9120-13

GROUP NO KEY NO

ENG(ENGINE)	T/A(TRANSAXLE)	BODY TYPE
Y = 1.5SOHC 6 = 1.6DOHC . = COMMON	M = MANUAL T/A A = AUTOMATIC T/A . = COMMON	4 N = 4 DOOR NOTCHBACK 3 H = 3 DOOR HATCHBACK 5 H = 5 DOOR HATCHBACK



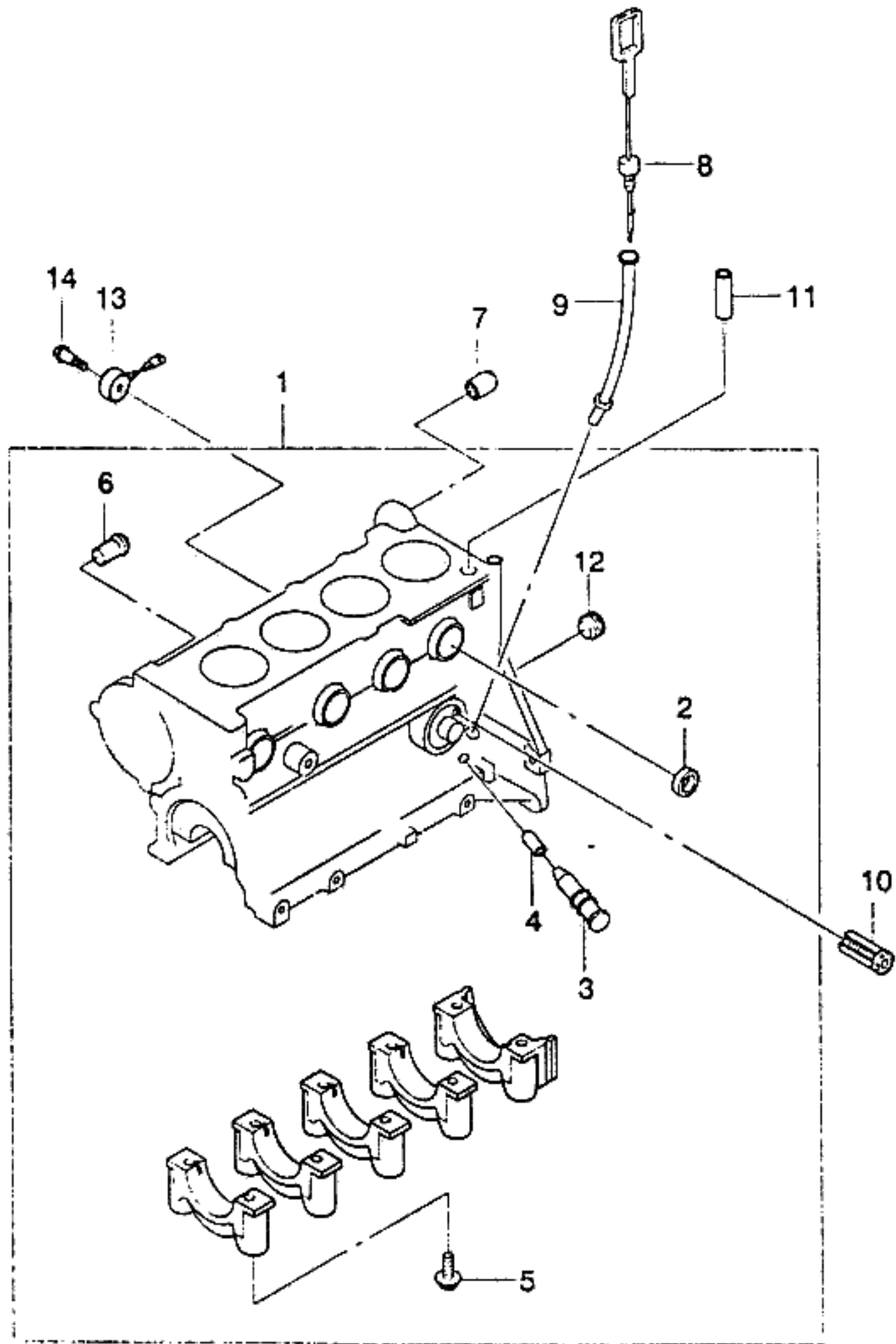
KEY NO.	PART NAME											
	PART NO	MODEL					OPTION	L / Q R / Y	EFFECTIVE DATE		REMARKS	P / C O D E
		E N G	T / A	BODY 4 N	LEVEL 3 H	5 S			S S	S S		
[01] S1141024	(E)GASKET KIT-ENG OVERHAUL (D)DICHTUNGS-SATZ ÜBERHOLUNG	6	B	B	B						(F)JEU DE JOINTS (S)JUEGO DE JUNTA	
	- CONSIST OF -											
	Ⓐ : GASKET-THROTTLE BODY											REFER TO BELOW
	ⓓ : GASKET-INTAKE MANIFOLD											2211-02
	Ⓒ : SEAL-BAYONET CAP											2431-02
	Ⓔ : GASKET- CAMSHAFT SUPT CVR											1321-02
	Ⓔ : RING-CAMSHAFT SEAL											1321-09
	Ⓛ : RING-THER. COVER SEAL											1321-11
	Ⓜ : RING-THER. HOUSING SEAL											1681-01
	Ⓢ : GASKET-CYLINDER HEAD											1681-04
	Ⓛ : GASKET-EXH. MANIFOLD											1311-25
	Ⓛ : RING-CYL. BLOCK SEAL											2441-02
	Ⓢ : GASKET-OIL PUMP BODY											1331-02
	Ⓛ : RING-OIL PUMP SEAL											1230-11
	Ⓛ : RING-CRANKSHAFT SEAL											1230-05
	Ⓢ : WASHER-PLAIN											1230-02
	Ⓛ : RING-SEAL											1230-15
	Ⓢ : RING-CRANKSHAFT SEAL											1230-20
	Ⓢ : GASKET-OIL PAN											1220-09
												9120-13
												GROUP NO
												KEY NO
	ENG(ENGINE)	T/A(TRANSAXLE)					BODY TYPE					
	Y = 1.5SOHC 6 = 1.6DOHC = COMMON	M = MANUAL T/A A = AUTOMATIC T/A = COMMON					4 N = 4 DOOR NOTCHBACK 3 H = 3 DOOR HATCHBACK 5 H = 5 DOOR HATCHBACK					



KEY NO.	PART NAME													
	PART NO	MODEL						OPTION	L / R	Q / T Y	EFFECTIVE DATE		REMARKS	P / C O D E
		E T	BODY			LEVEL					FROM	TO		
N / G	4	3	5	S	S	S								
[01]	(E)BLOCK A-CYLINDER (D)BLOCK,ZYLINDER											(F)BLOC-CYLINDRE (S)BLOQUE-CILINDRO		
A96184803	Y M B B B S S S											1		
A96184804	Y A B B B O O O											1		
A96184805	6 M B B B . . O											1		
A96184806	6 A B B B . . O											1		
[02]	(E)CAP (D)DECKEL											(F)CHAPEAU (S)TAPA		
96180730	. . B B B S S S											6		34-STD
11070803	. . B B B S S S											6		36-OIS
[03]	(E)PLUG-IGNITION TIMING (D)STÖPSEL											(F)BOUCHON (S)TAPON-TIEMPO DE IGNICION		
90091048	. . B B B S S S											1	971001	
[04]	(E)BUSHING-IGNITION TIMING (D)LAGERFUTTER											(F)MANCHON (S)BUJE-TIEMPO DE IGNICION		
90091049	. . B B B S S S											1		
[05]	(E)BOLT-HEXAGON (D)SCHRAUBE											(F)BOULON (S)PERNO		
09100-10008	. . B B B S S S											10		
[06]	(E)NECK-WATER INLET (D)HALS,WASSERLEITUNG											(F)COU-ENTREE EAU (S)CUELLO-ENTRADA DE AGUA		
96351207	. . B B B S S S											1		
[07]	(E)SLEEVE (D)HÜLSE,KUPPLUNG GEHÄUSE											(F)CHEMISE (S)MANGA-CARTER DE EMBRAGUE		
90108591	. . B B B S S S											2		
[08]	(E)STICK A-OIL LEVEL GAUGE (D)MEßSTAB,ÖL PEGEL											(F)JAUGE (S)VARILLA-MEDIDOR		
96352131	. M B B B S S S											1		

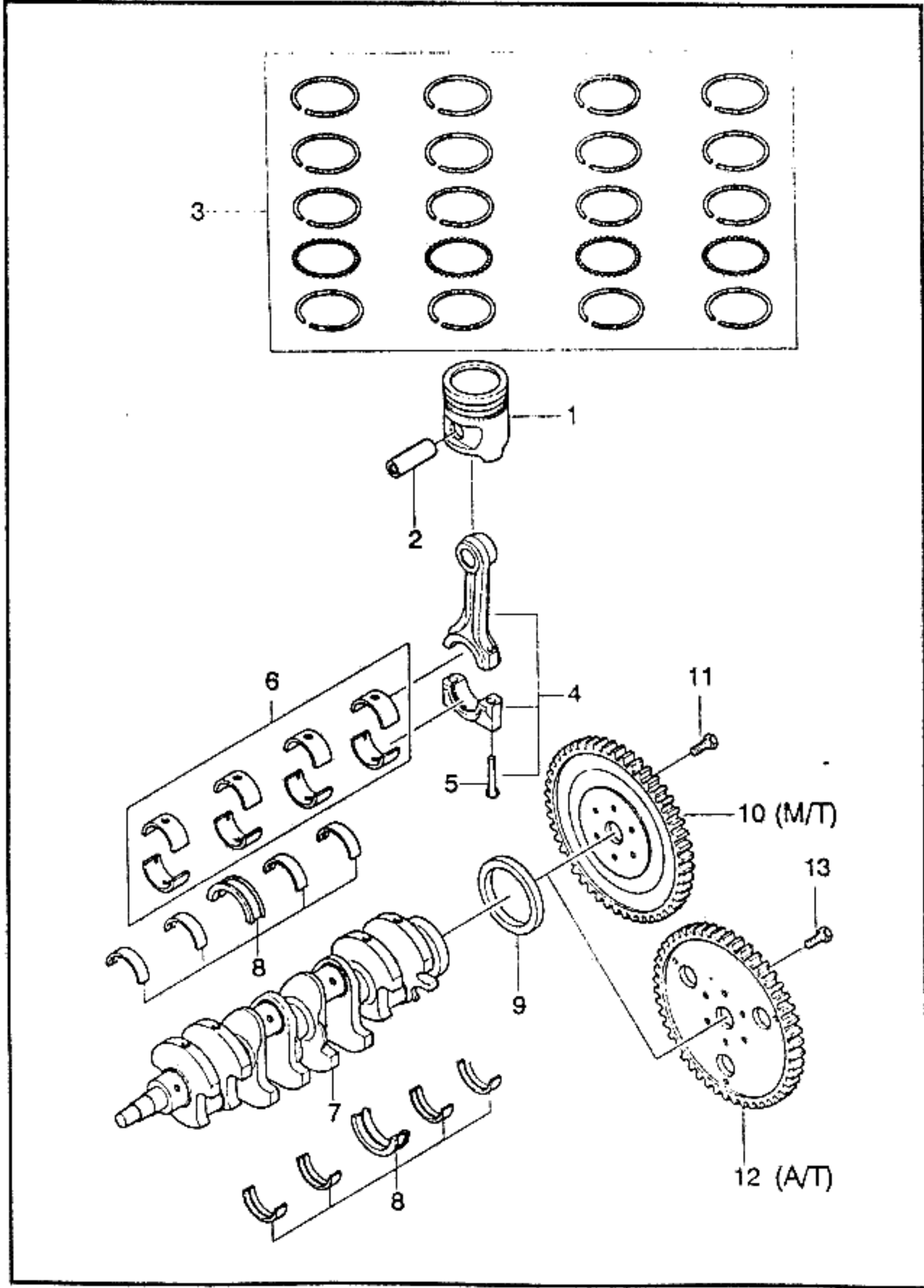
ENG(ENGINE)	T/A(TRANSAXLE)	BODY TYPE
Y = 1.5SOHC 6 = 1.6DOHC . = COMMON	M = MANUAL T/A A = AUTOMATIC T/A . = COMMON	4 N = 4 DOOR NOTCHBACK 3 H = 3 DOOR HATCHBACK 5 H = 5 DOOR HATCHBACK





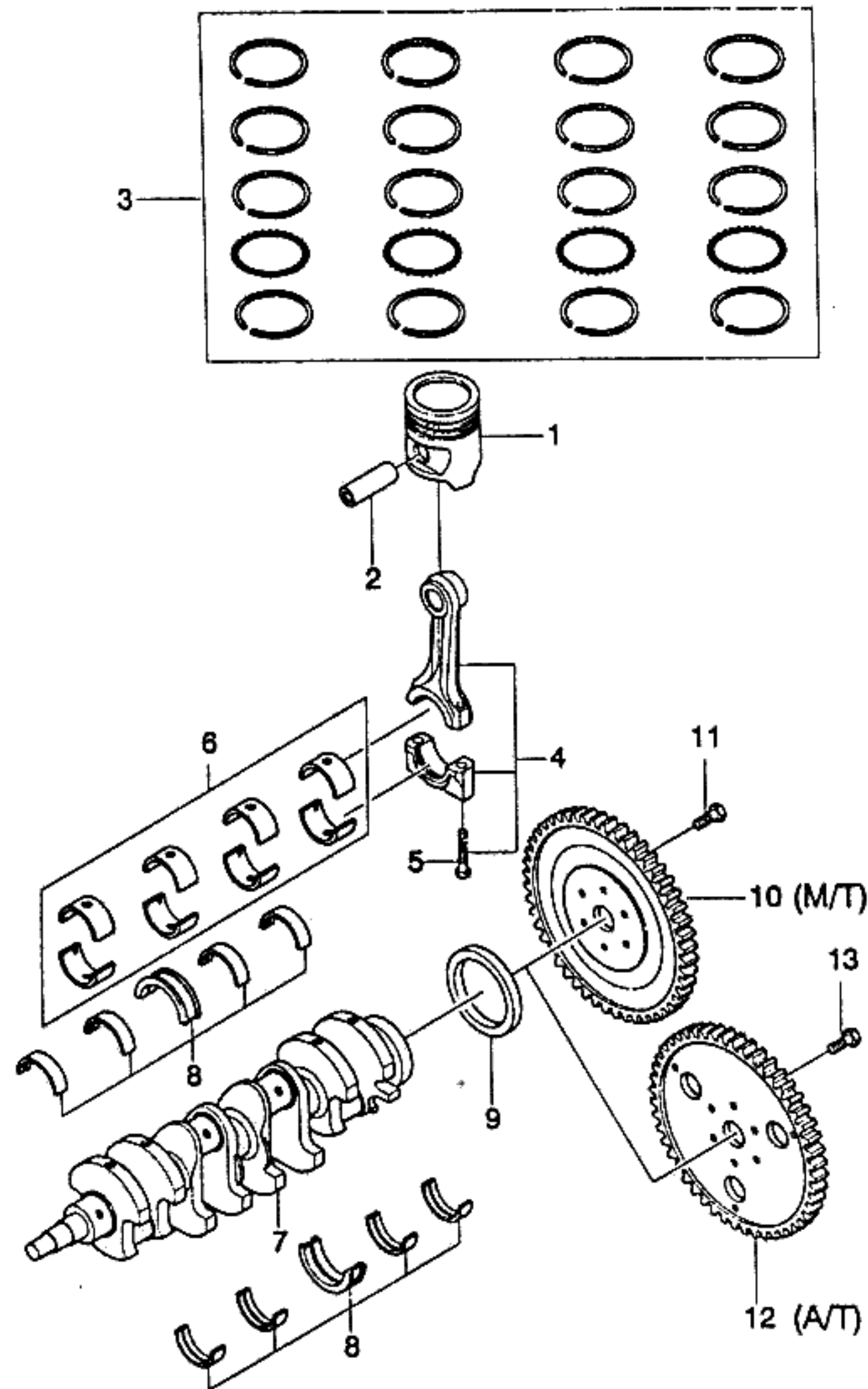
KEY NO.	PART NAME													
	PART NO	MODEL						OPTION	L / R	QTY	EFFECTIVE DATE		REMARKS	P / CODE
		E	T	BODY			LEVEL				FROM	TO		
N	G	4	3	5	S	S	S							
96352132	. A B B B O O O													
[09]	(E)TUBE-GAUGE STICK (D)ROHRLEITUNG,MEßSTAB													
96352134	. . B B B S S S													
[10]	(E)VALVE A-BYPASS (D)VENTIL,ÜBERGANG													
90136113	. . B B B S S S													
[11]	(E)SLEEVE (D)HÜLSE													
90091779	. . B B B S S S													
[12]	(E)PLUG (D)STÖPSEL													
09246-14001	. . B B B S S S													
[13]	(E)SENSOR-KNOCK (D)SENSOR													
10456240	6 . B B B . . O													
[14]	(E)BOLT (D)SCHRAUBE													
09111-08002	6 . B B B . . O													

ENG(ENGINE)	T/A(TRANSAXLE)	BODY TYPE
Y = 1.5SOHC 6 = 1.6DOHC . = COMMON	M = MANUAL T/A A = AUTOMATIC T/A . = COMMON	4 N = 4 DOOR NOTCHBACK 3 H = 3 DOOR HATCHBACK 5 H = 5 DOOR HATCHBACK



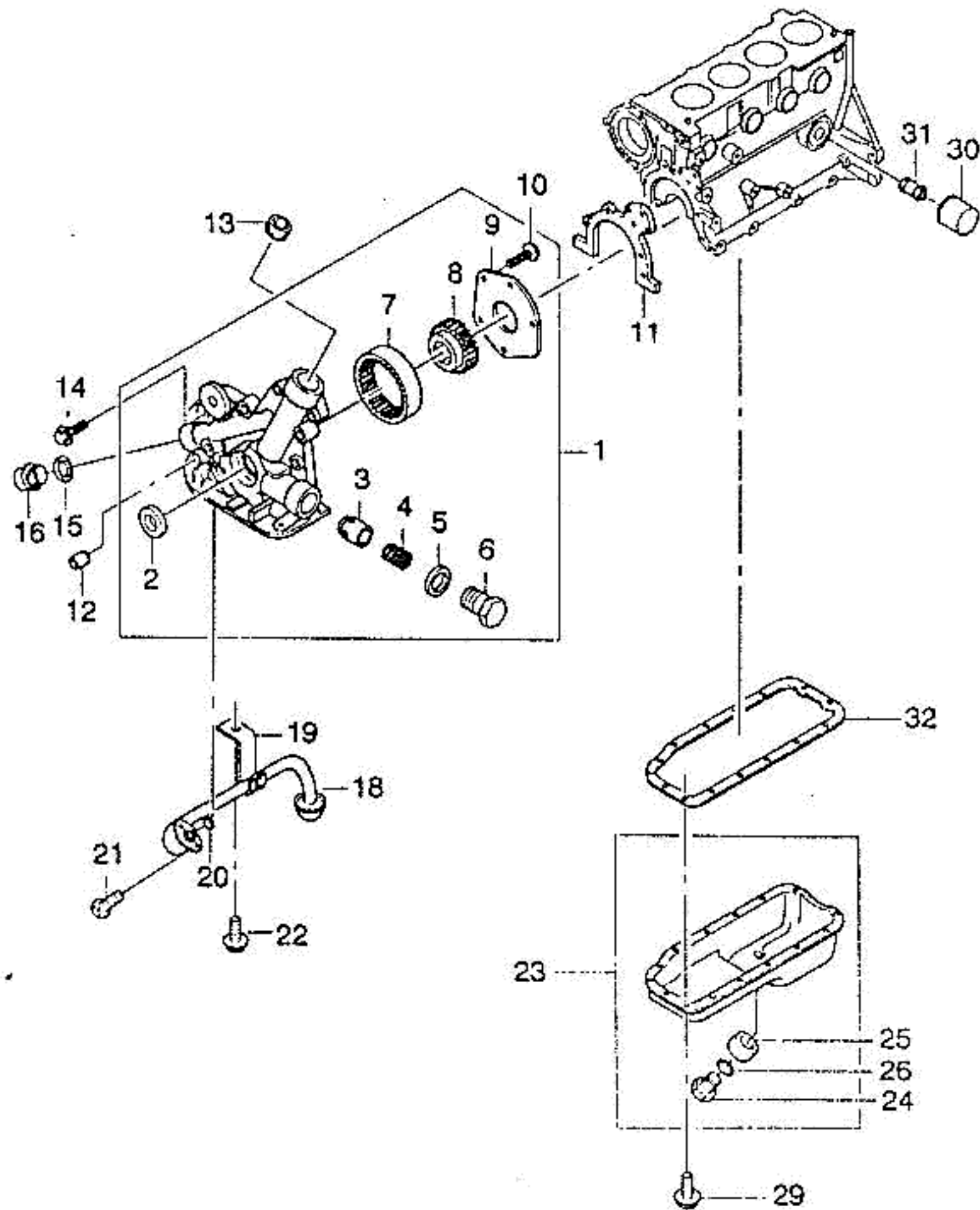
KEY NO.	PART NAME												
	PART NO	MODEL						OPTION	L / R	QTY	EFFECTIVE DATE	REMARKS	P / CODE
		E	T	BODY			LEVEL						
N	G	4	3	5	S	S	S						
[01]	(E)PISTON (D)KOLBEN										(F)PISTON (S)PISTON		
96350120	Y . B B B S S S										4	STD	
S1220008	Y . B B B S S S										4	O/S 0.25	
S1220009	Y . B B B S S S										4	O/S 0.5	
96182846	6 . B B B . . O										4	STD	
S1220019	6 . B B B . . O										4	O/S 0.25	
S1220020	6 . B B B . . O										4	O/S 0.5	
[02]	(E)PIN-PISTON (D)STIFT,KOLBEN										(F)BROCHE-PISTON (S)PASADOR-PISTON		
96110730	Y . B B B S S S										4		
96350355	6 . B B B . . O										4		
[03]	(E)RING SET-PISTON (D)RING SATZ,KOLBEN										(F)JEU DE SEGMENTS-PISTON (S)JUEGO DE ANILLOS-PISTON		
NP960	Y . B B B S S S										1	STD	
NP1015	Y . B B B S S S										1	O/S 0.25	
NP1016	Y . B B B S S S										1	O/S 0.5	
S1220014	6 . B B B . . O										1	STD	
S1220015	6 . B B B . . O										1	O/S 0.25	
S1220016	6 . B B B . . O										1	O/S 0.5	
[04]	(E)ROD A-CONNECTING (D)STAB,VERBINDUNGS										(F)BIELLE-BIELLE (S)VARILLA-CONECTANDO		
A90281724	. . B B B S S S										4		
[05]	(E)BOLT-HEXAGON (D)SCHRAUBE										(F)BOULON (S)PERNO		
09100-08004	. . B B B S S S										8		

ENG(ENGINE)	T/A(TRANSAXLE)	BODY TYPE
Y = 1.5SOHC 6 = 1.6DOHC . = COMMON	M = MANUAL T/A A = AUTOMATIC T/A . = COMMON	4 N = 4 DOOR NOTCHBACK 3 H = 3 DOOR HATCHBACK 5 H = 5 DOOR HATCHBACK



KEY NO.	PART NAME													
	PART NO	MODEL						OPTION	L / R	Q / T Y	EFFECTIVE DATE		REMARKS	P / C O D E
		E N G	T N / A	B O D Y	L E V E L	S S S	S S S				FROM	TO		
[06]	(E)BEARING SET-CONNECTING ROD (D)KUGELLAGER											(F)ROULEMENT-BIELLE (S)COJINETE-VARA DE CONEXION		
96351662S	. . B B B S S S											1		
96351663S	. . B B B S S S											1		
[07]	(E)CRANKSHAFT A (D)KURBELWELLE											(F)VILEBREQUIN (S)CIGUEÑAL		
A96350171	. . B B B S S S											1		
[08]	(E)BEARING SET-CRANKSHAFT (D)KUGELLAGER STELLUNG											(F)JEU DE ROULEMENT (S)JUEGO DE COJINETE		
S1220012	. . B B B S S S											1	STD	
S1220013	. . B B B S S S											1	U/S 0.25	
[09]	(E)RING-SHAFT SEAL (D)RING,STAB DICHTUNG											(F)ANNEAU-JOINT D'ARBRE (S)ANILLO-BROCHE DE EJE		
96101489	. . B B B S S S											1	80X98X10	
[10]	(E)FLYWHEEL A (D)SCHWUNGRAD											(F)VOLANT D'ENTRAINEMENT (S)VOLANTE		
96184979	Y M B B B S S S											1		
96184353	6 M B B B . . O											1	POT	
[11]	(E)BOLT-HEXAGON (D)SCHRAUBE											(F)BOULON (S)PERNO		
09100-09001	Y M B B B S S S											6		
09100-09003	6 M B B B . . O											6		
[12]	(E)PLATE A-FLEXIBLE (D)PLATTE,FLEXIBEL											(F)PLAQUE-FLEXIBLE (S)PLACA-FLEXIBLE		
90236309	. A B B B O O O											1		
[13]	(E)BOLT-HEXAGON (D)SCHRAUBE											(F)BOULON (S)PERNO		
09100-09004	. A B B B O O O											6		

ENG(ENGINE)	T/A(TRANSAXLE)	BODY TYPE
Y = 1.5SOHC 6 = 1.6DOHC . = COMMON	M = MANUAL T/A A = AUTOMATIC T/A . = COMMON	4 N = 4 DOOR NOTCHBACK 3 H = 3 DOOR HATCHBACK 5 H = 5 DOOR HATCHBACK

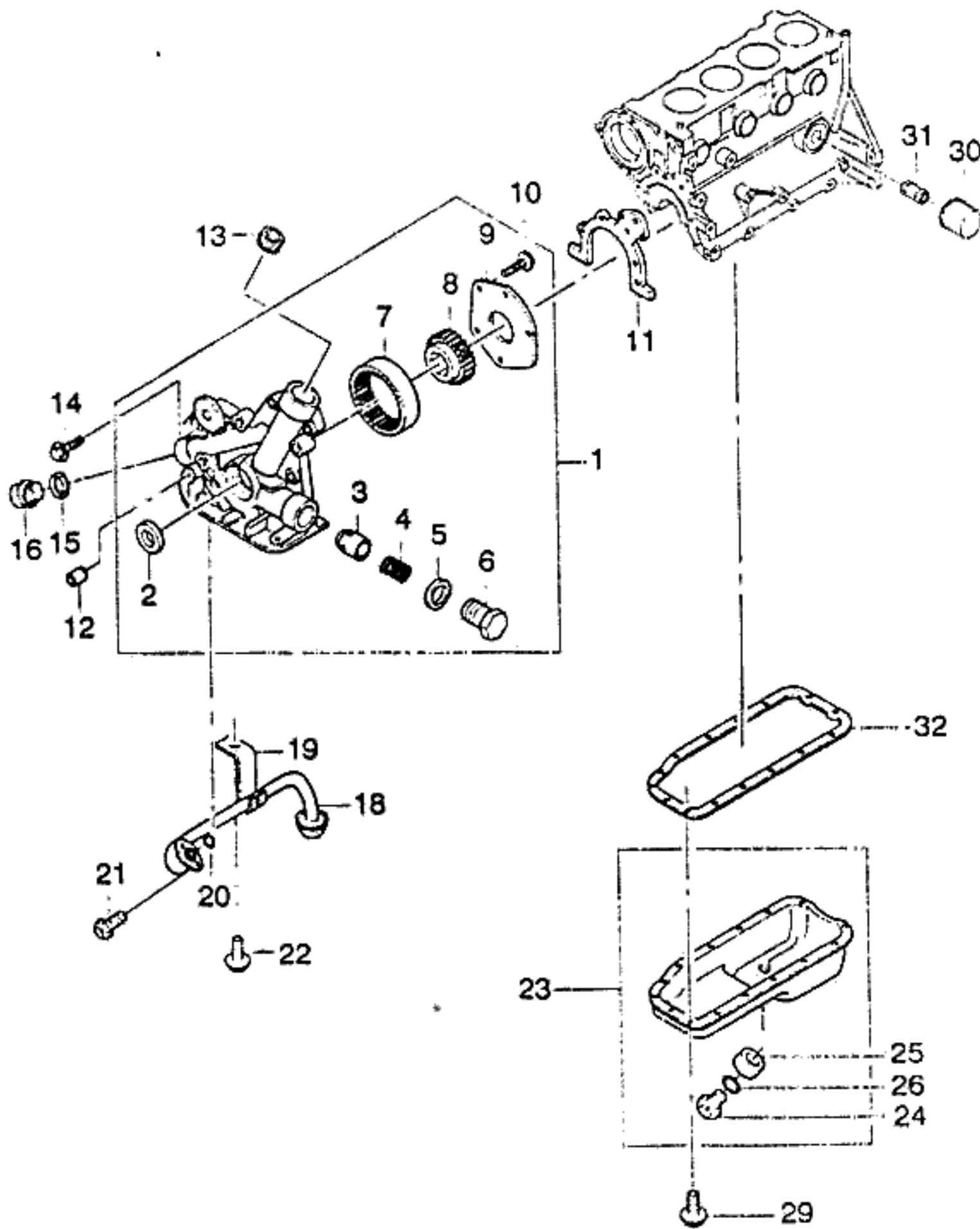


KEY NO.	PART NAME													
	PART NO	MODEL						OPTION	L / Q / R / Y	EFFECTIVE DATE		REMARKS	P / I / C / O / D / E	
		E	T	BODY			LEVEL			FROM	TO			
	N / G	A	4	3	5	S	S	S						
[01]	96350159	(E)PUMP A-OIL (D)PUMPE,ÖL		B	B	B	S	S	S			(F)POMPE-HUILE (S)BOMBA-ACEITE	1	
[02]	96350161	(E)RING-SHAFT SEAL (D)RING,KURBELWELLE DICHTUNG		B	B	B	S	S	S			(F)ANNEAU-JOINT VLEBREQUIN (S)ANILLO-SELLO DE CIGUEÑAL	1	30X42X8
[03]	03448846	(E)PLUNGER-PRESS VALVE (D)TAUCHER		B	B	B	S	S	S			(F)PISTON PLONGEUR (S)EMBOLO	1	
[04]	03448847	(E)SPRING (D)FEDERUNG		B	B	B	S	S	S			(F)RESSORT (S)RESORTE	1	
[05]	11093042	(E)RING-SEAL (D)RING,ÖLPUMPE DICHTUNG		B	B	B	S	S	S			(F)ANNEAU (S)ANILLO-SELLO	1	
[06]	03448834	(E)PLUG-SCREW (D)STÖPSEL,SCHRAUBEN		B	B	B	S	S	S			(F)BOUCHON-VIS (S)TAPON-TORNILLO	1	M20X1.5
[07]	96350165	(E)ROTOR-OIL PUMP OUTER (D)DREHTEIL		B	B	B	S	S	S			(F)ROTOR (S)ROTOR	1	
[08]	96350164	(E)ROTOR-OIL PUMP INNER (D)DREHTEIL		B	B	B	S	S	S			(F)ROTOR (S)ROTOR	1	
[09]	96350166	(E)COVER-OIL PUMP (D)DECKEL,ÖLPUMPE		B	B	B	S	S	S			(F)CARTER-POMPE A HUILE (S)CUBIERTA-BOMBA DE ACEITE	1	
[10]		(E)SCREW (D)SCHRAUBE		B	B	B	S	S	S			(F)VIS (S)TORNILLO	1	

ENG(ENGINE)	T/A(TRANSAXLE)	BODY TYPE
Y = 1.5SOHC 6 = 1.6DOHC . = COMMON	M = MANUAL T/A A = AUTOMATIC T/A . = COMMON	4 N = 4 DOOR NOTCHBACK 3 H = 3 DOOR HATCHBACK 5 H = 5 DOOR HATCHBACK

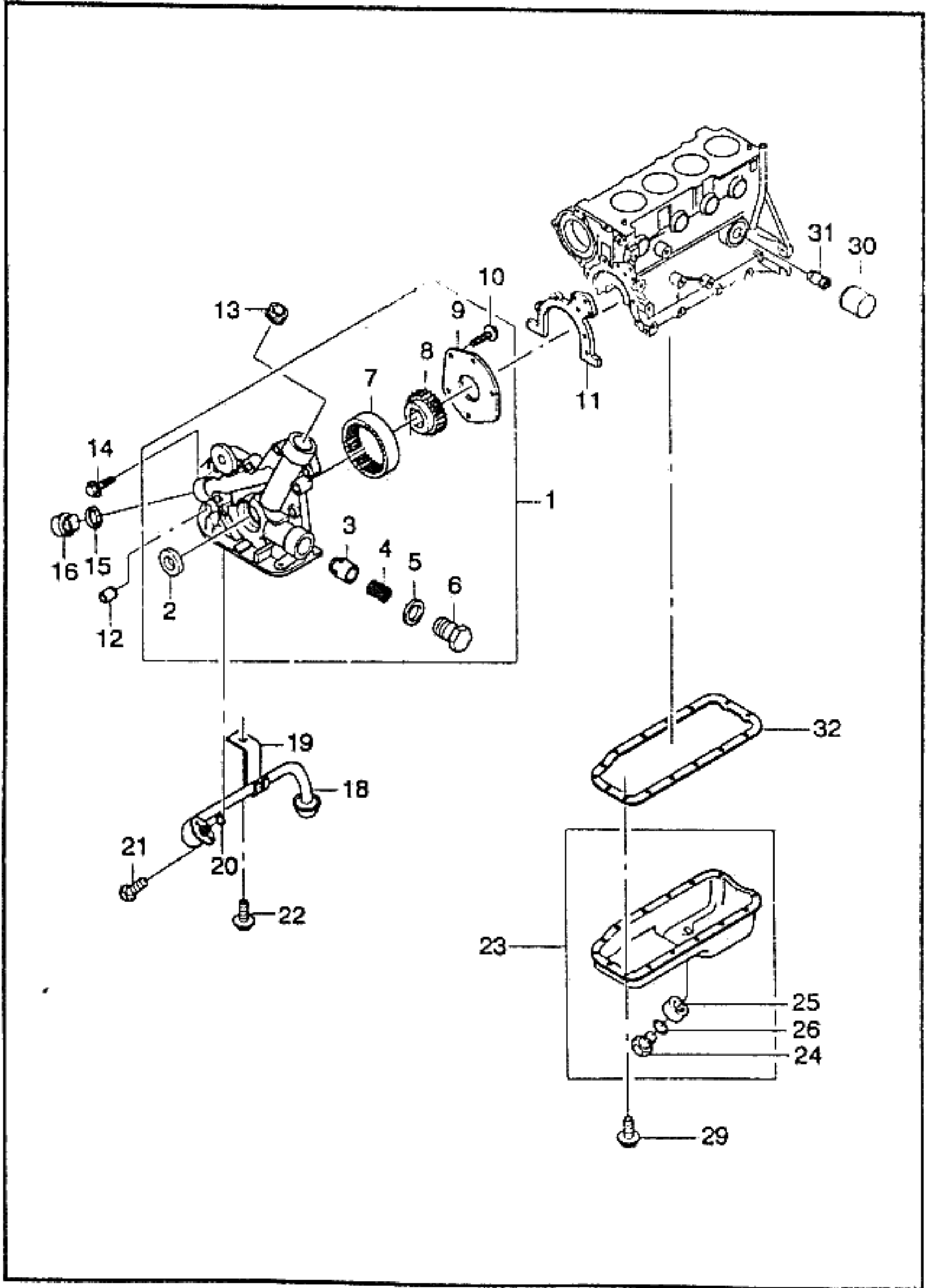




KEY NO.	PART NAME													
	PART NO	MODEL					OPTION	L / R	QTY	EFFECTIVE DATE		REMARKS	P / CODE	
		E	T	BODY		LEVEL				FROM	TO			
N / G	A	4	3	5	S	S	S							
11085861	[11]	.	.	B	B	B	S	S	S		5	M6X14		
				(E)GASKET-OIL PUMP BODY								(F)JOINT-CORPS POMPE A HUILE		
				(D)DICHTUNG,ÖL-PUMPE-KÖRPER								(S)JUNTA-CUERPO DE BOMBA		
96181208		.	.	B	B	B	S	S	S	&NN4	1			
96100599		.	.	B	B	B	A	A	A	&NN6	1			
90353564		.	.	B	B	B	A	A	A	&NN7	1	970608		
Y 96181208		.	.	B	B	B	A	A	A	&NN7	1	970608		
	[12]			(E)SLEEVE-OIL PUMP								(F)CHEMISE-POMPE A HUILE		
				(D)HÜLSE,ÖLPUMPE								(S)MANGA-BOMBA DE ACEITE		
90096047		.	.	B	B	B	S	S	S		2			
	[13]			(E)PLUG-SCREW								(F)BOUCHON-VIS		
				(D)STÖPSEL,SCHRAUBEN								(S)TAPON-TORNILLO		
09246-18002		.	.	B	B	B	S	S	S		1			
	[14]			(E)BOLT-HEXAGON								(F)BOULON		
				(D)SCHRAUBE								(S)PERNO		
01130-06253														NOT APPLIED
09117-06008		.	.	B	B	B	S	S	S		6			
	[15]			(E)WASHER-PLAIN								(F)RONDELLE		
				(D)DICHTUNGSRING								(S)ARANDELA		
09160-14003		.	.	B	B	B	S	S	S		1			
	[16]			(E)SWITCH A-OIL PRESSURE								(F)COMMUTATEUR		
				(D)SCHALTER,ÖL DRUCK								(S)INTERRUPTOR		
90336039		.	.	B	B	B	S	S	S		1			
	[18]			(E)PIPE A-OIL SUCTION								(F)TUYAU-ASPIRATION HUILE		
				(D)ROHR,ÖL SAUG								(S)TUBERIA-SUCCION DE ACEITE		
90410981		.	.	B	B	B	S	S	S		1			
	[19]			(E)BRACKET-OIL SUCTION PIPE								(F)SUPPORT		
				(D)TRÄGER,ÖLLEITUNGSRÖHR								(S)SOPORTE		

ENG(ENGINE)	T/A(TRANSAXLE)	BODY TYPE
Y = 1.5SOHC 6 = 1.6DOHC . = COMMON	M = MANUAL T/A A = AUTOMATIC T/A . = COMMON	4 N = 4 DOOR NOTCHBACK 3 H = 3 DOOR HATCHBACK 5 H = 5 DOOR HATCHBACK

1250 OIL PAN & PUMP



KEY NO.	PART NAME													
	PART NO	MODEL					OPTION	L / R	Q / T Y	EFFECTIVE DATE		REMARKS	P / CODE	
		E T	BODY			LEVEL				FROM	TO			
N / G	4	3	5	S	S	S								
90076916	[20]	.	.	B	B	B	S	S	S		1		(E)RING-SEAL (D)RING,DICHTUNG (F)ANNEAU-JOINT (S)ANILLO-SELLO	
90190637	[21]	.	.	B	B	B	S	S	S		1		(E)BOLT (D)SCHRAUBE (F)BOULON (S)PERNO	
09117-06001	[22]	.	.	B	B	B	S	S	S		2		(E)BOLT (D)SCHRAUBE (F)BOULON (S)PERNO	
01130-06129	[23]	.	.	B	B	B	S	S	S		1		(E)PAN A-OIL (D)PFANNE,ÖL (F)CARTER-HUILE (S)RECIPIENTE-ACEITE	
96351480		.	.	B	B	B	S	S	S	-NN7	1	971001	STEEL	
96350495		.	M	B	B	B	A	A	A	&NN7	1	970617	ALUMINUM	
O 96351600		.	M	B	B	B	A	A	A	&NN7	1	970617 971001	ALUMINUM	
96351480		.	A	B	B	B	A	A	A	&NN7	1	971001	STEEL	
96351480		Y	M	B	B	B	S	S	S	-NN4&XCA	1	971001	STEEL	
96351480		Y	M	B	B	B	S	S	S	-NN7	1	971001	STEEL	
96351600		Y	M	B	B	B	A	A	A	&NN4&XCA	1	971001	ALUMINUM	
96351600		Y	M	B	B	B	A	A	A	&NN7	1	971001	ALUMINUM	
96351480		Y	A	B	B	B	O	O	O		1	971001	STEEL	
96351480		6	.	B	B	B	.	.	O	-NN7	1	971001	STEEL	
96351600		6	M	B	B	B	.	.	A	&NN7	1	971001	ALUMINUM	
96351480		6	A	B	B	B	.	.	A	&NN7	1	971001	STEEL	
[24]		(E)BOLT (D)SCHRAUBE											(F)BOULON (S)PERNO	

ENG(ENGINE)	T/A(TRANSAXLE)	BODY TYPE
Y = 1.5SOHC 6 = 1.6DOHC . = COMMON	M = MANUAL T/A A = AUTOMATIC T/A . = COMMON	4 N = 4 DOOR NOTCHBACK 3 H = 3 DOOR HATCHBACK 5 H = 5 DOOR HATCHBACK