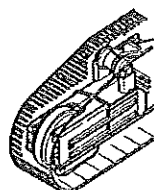
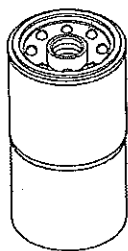


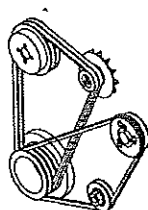
DAEWOO Excavator S340LC-V

Filter		Interval(hr)
E/g oil filter	65.05510-5027	500
E/g fuel filter	65.12503-5011D	750
Element-inner(air cleaner)	2474-9057	500
Element-outer(air cleaner)	2474-9051	500
Suction filter-oil tank	2471-9401A	2000
Filter-oil tank	2471-9051B	500
Filter-fuel tank	2471-9046	
Element-pilot filter	2471-1154	500
Aircon filter	2471-6050A	

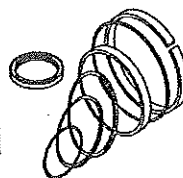


Under carriage		
Idler	270-00037	
Upper roller	2270-6126A	
Lower roller	2270-9025	
Sprocket	108-00018	
Track link-without shoe	2272-1074	
Track shoe-link+shoe	2273-1049	600G
Shoe (only)	2273-9014	600G
Shoe (only)	2273-9015A	700G
Shoe (only)	2273-9016A	800G
Shoe (only)	2273-9017A	850G

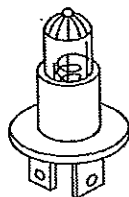
Belt		
Aircon Belt	2106-1019D2	
Fan Belt	2106-1019D13	



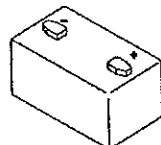
Seal kit		
Seal kit-boom	2440-9279BKT	
Seal kit-arm	440-00013AKT	
Seal kit-bucket	2440-9281AKT	
Seal kit-track spring	2274-1014AKT	
Seal kit-center joint	2480-9405BKT	
Swing motor	2401-9309KT	
Travel motor	2401-9264KT	



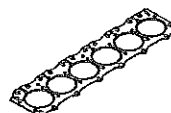
Bulb		
Bulb 24V 3W	S862203H	
Bulb-halogen 24V 75/70W	2515-1022D1	
Bulb 24V 70W	2515-1016D4	



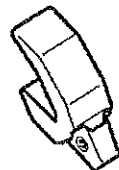
Battery / fuse / relay		
Battery	2506-6008	150AH
Fuse 10A	2527-1016	
Fuse 15A	2527-1017	
Fuse 20A	2527-1018	
Fuse 30A	2527-1025	
Fusible link 27A	2527-1023A	
Relay	2544-9033	
Battery relay	2544-9024	

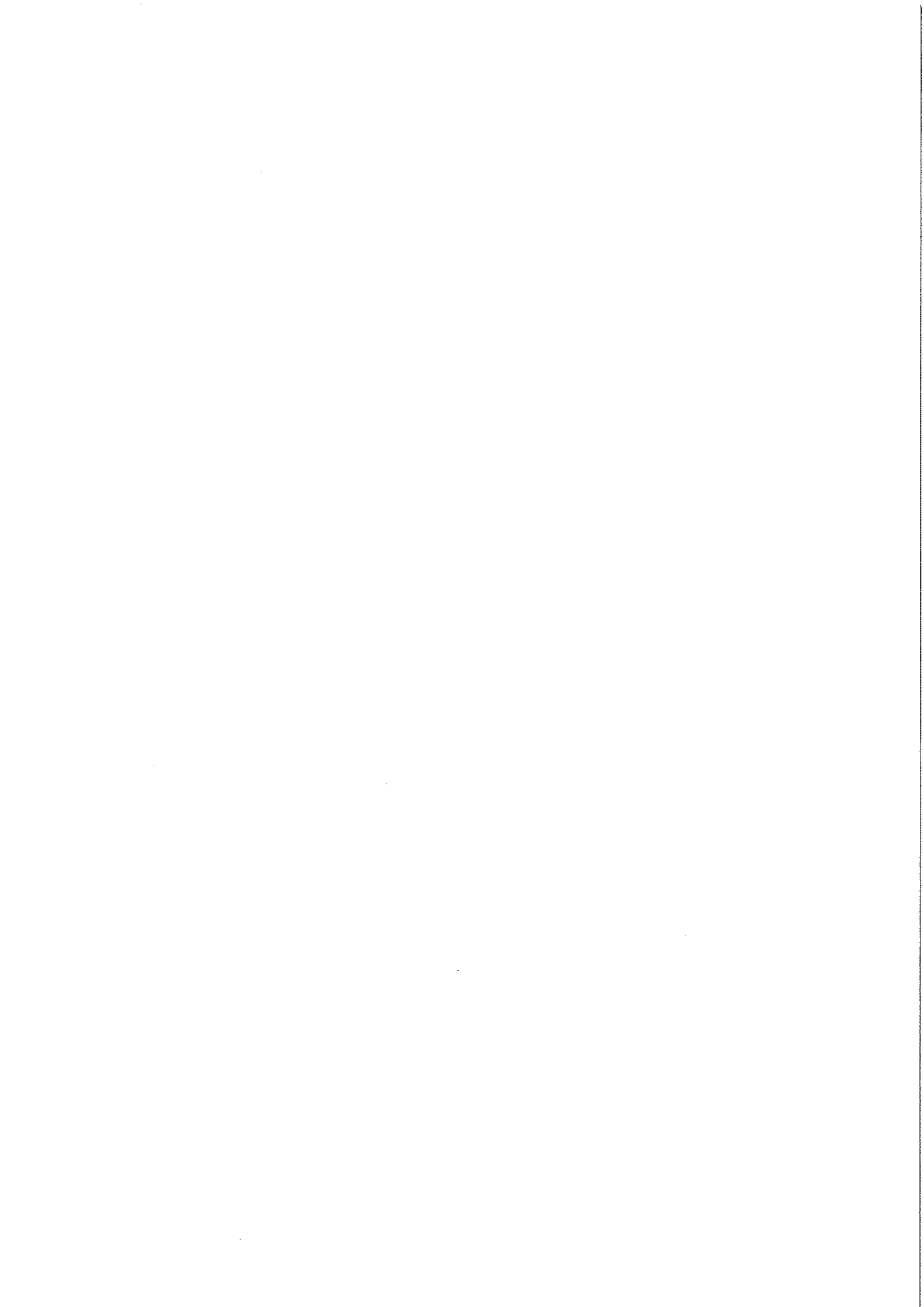


Engine Gasket kit	
Top overhaul gasket kit	65.99605-8028
All overhaul gasket kit	65.99601-8042



Teeth / adapter / side cutter	
Teeth	713-00032
Adpater	713-00033
Side cutter(RH)	2713-6034A
Side cutter(LH)	2713-6035A



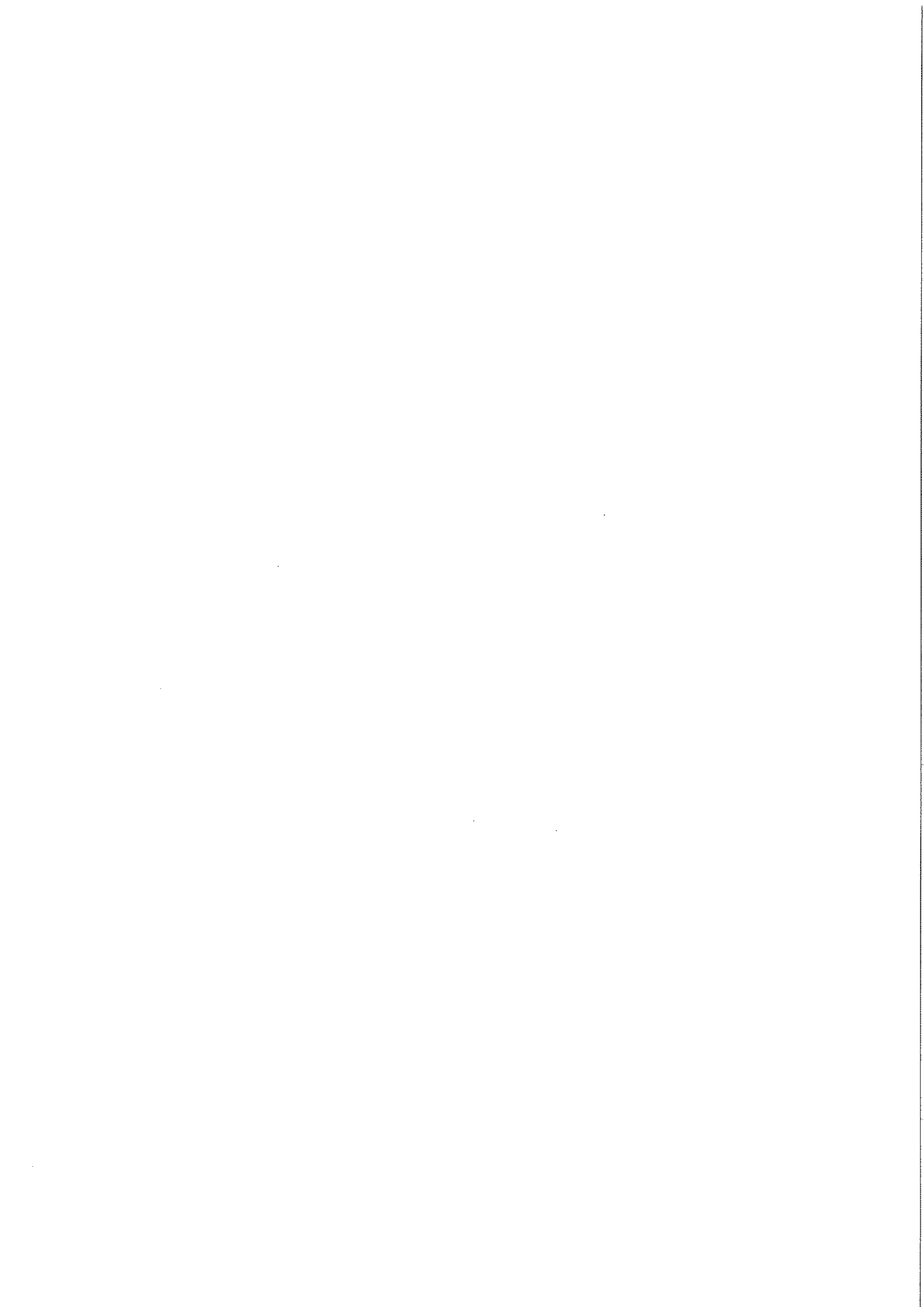


SOLAR

340LC-V

**PARTS LIST
LISTE DE PIECES
DETACHEES**

**N° DE REFERENCE : 021 - 00022BEF
HELW- 2306**



FOREWORD

● This parts list is shown the equipment components parts of 「DAEWOO EXCAVATOR S340LC-V」 .

1. HOW TO ORDER PARTS.

When ordering parts, please specify the following items as shown in the following example.

Ex.	1) Model of Machine	: S340LC-V	(Shown on name plate on the side cover)
	2) Machine Serial No	: HELW0-○○○○○○	(Shown on nameplate on the bed frame)
	3) Engine Serial No	: DE12TIS	(Shown on Engine cylinder block)
	4) Part No.	: 401-00253	
	5) Description	: PUMP	
	6) Q'ty	: 1	

2. HOW TO USE THIS PARTS LIST.

Key No. : It shows the reference no. on the illustration.

Part No. : It shows the part number of the parts which are included in an illustration.

Description : It shows the name of part. Components of an assembly part are shown with [•] marks and are shown on the line, or lines, below the assembly part. Also if the components with [•] mark is consists of further components part. These further components are shown with the marks [••].

Q'ty : It shows the quantity use for one machine. quantity of components show the quantity for one assembly part.

Service code : Abbreviations in this column have their own meaning as show below.

B : The parts with this abbreviation shows that the part requires some work on it before installing in the machine.

D : These parts are not serviceable,
In case of the part with this abbreviation is a component of an assembly and is not available independently. The assembly part containing this part should be ordered.

K : This means that the part is contained in the service part kit.

M : This means that the part is available only with its mating parts altogether.

R : The part with this abbreviation shows that the quantity of the part is changed depending on the machine, such as an adjusting shim etc.

S : This part is specially provided as a service part, which was not provided in the machine before shipping from the factory.

G : This part need grade control and should be requested as the same grade of counter part.

- OP : Optional parts.
- EX : Specific design parts.
- OS : Over-sized parts.
- US : Under-sized parts.
(Part with abbreviation "OS" or "US" is described on the line below the standard sized part.)
- # : The part with this mark is newly added on that page of the equipment.

Serial no. : Serial No. shows the machine serial number which the parts were applied. As to the engine Serial No. shows only engine serial number which the parts were applied.
Parts without any applicable serial number are used in every machine.

ICA : ICA shows the interchangeability between the original and the improved parts. Abbreviations used in this column are as follows:

- I : Part No. in the column of "Replaceable part" can be used instead of this part but not vice versa.
- P : This must not be used for machine. The part No. in the column "Replaceable part" should be used instead.
- T : Parts No. those in the column of "Replaceable part" can be used as an assembly instead of this part.
- Y : This part and the part in the column of "Replaceable part" are interchangeable with each other.

Blank : This part has no "Replaceable part"

Replaceable part : Interchangeable parts nos. and their required quantity are shown in this column.
If interchangeable improved parts are provided for the parts which you may order, the improved parts classified as "I", "P", "T" or "Y" may be supplied.

- When repairing, it is recommended to use our standard part.
- Researching the assembling parts from Part No., see the 「Parts Index」 of this parts list.

Oct. 2001

AVANT-PROPOS

● Cette liste de pieces apparait dans le 「DAEWOO EXCAVATEUR S340LC-V」.

1. COMMENT COMMANDER LES PICES.

Lorsque vous commanderez les pieces, veuillez specifier les articles suivants comme indiques dans l'exemple ci-dessous:

Ex.	1) Modele de machine	:	S340LC-V
	2) Serie de la machine	:	HELW0-○○○○○
	3) Numero de serie du moteur	:	DE12TIS
	4) Numero de la piece	:	401-00253
	5) Description	:	POMPE
	6) Quantite	:	1

2. COMMENT UTILISER CE RECUEIL DE PICES DETACHEES.

Numero de la cle : Indique le numero de reference de l'illustration.

Numero de la piece : Indique le numero de piece sur l'illustration.

Description : Nom de la piece. Les pieces composantes des pieces d'assemblage sont indiquees avec une marque [●] en dessous des pieces d'assemblage. Aussi, si les pieces composantes sont marques d'un [●]. Cela indique qu'il y a plusieurs pieces composantes, ces autres pieces composantes sont indiquees par un [●●].

Quantite : Quantite, montre la quantite utilisee pour une machine, cependant Q'te des composants de pieces montre la quantite utilisee pour un assemblage de pieces.

Code de Service : L'Abveration est un composant d'un code de service qui a sa propre signification comme indique ci-dessous.

B : La piece avec cette abreviation indique que la piece exige d'etre travaillee avant d'etre installee dans la machine.

D : La piece avec cette abreviation est un composant d'un assemblage et n'est pas disponible toute seule, la d'assemblage contenant cette piece dcvrait ctrc commandee

K : Cette veut dire que la piece est incluse dans la trousse de pieces de service. "ensemble kit"

M : Cela signifie que la piece est disponible uniquement avec as peice piece d'accouplement.

R : La piece avec cette abreviation montre que la quantite de la piece est changee en fonction de la machine.

- S : Cette piece est specialement approvisionnee en tant que piece de service, qui n'a pas ete livree dans la machine lors du depart de l'usine.
- G : Cette piece a besoin d'on degerde controle et doit etre commande avec un niveau de degre equivalent.
- OP : Pieces facultatives
- EX : Pieces specifiquement dessinees
- OS : Pieces demesurees
- US : Pieces uop petites
La piece avec abreviation OS-US est decrite sur la ligne en dessous de la piece standard
- # : La piece avec cette marque vient d'ent d'etre rajoutee sur la page de l'equipement.

Numero de serie : Numero de serie indique le numero de serie de la machine avcc lesquels les pieces etaient appliquees.
En ce qui conceme le numero de serie du moteur. Celui-ci indique seulement le numero de serie du moteur sur lesquels les pieces etaient appliquess.
Les pieces qui n'ont aucun numero de serie applicable sont utilisees dans toutes les machines.

ICA : Indique l'interchangeabilite entre la piece originale et les piece ameliorees. Les abreviations utilisees dans cette colonne sont les suivantes:

- I : Piece numero dans la colonne de piece de piece de remplacement peut etre utilisee au lieu de cette piece mais pas l'inverse.
- P : Ceci ne peut etrc utilise pour la machine. Le numero de piece dans colonne pieces remplaceable devrait etre utilise a la place.
- T : Numcros de pieces, ceux dans la colonne piece de remplacement' peuvent etre utilisees en tant qu'assemblage au lieu de cette piece.
- Y : Cette piece et la piece dans la colonne piece de remplacement'sont.

Piece de rechange : Numeros de pieces interchangeable et leurs quantites requises sont indiquees sur cette colonne. Si les pieces ameliorees interchangeablees sont fournies, les pieces que vous pouvez commander sont classees de la facon suivante "I", "P", "T" ou "Y" peuvent etre fournies.

- Lors de reparation, il est recommande d'utiliser notre piece standard.
- Recherche de pieces d'assemblage a partir des numeros de pieces
Regarder l'index des pieces qui se trouvent a la fin du livre.

CONTENTS

TABLES DES MATIERES

● ENGINE PARTS

Fig. 001	CYLINDER BLOCK	BLOC CYLINDRES	2
002	TIMING GEAR CASE	CARTER DE DISTRIBUTION	4
003	FLYWHEEL HOUSING	CARTER DE VOLANT MOTEUR	6
004	DRIVING SYSTEM	SYSTEME D'CENTRAINEMENT	8
005	CYLINDER HEAD	CULASSE	12
006	CYLINDER HEAD COVER	COUVERTURE DE CULASSE	14
007	TIMING SYSTEM	SYSTEME DE SYNCHRONISATION	16
008	OIL PUMP	POMPE D'CHUILE	20
009	OIL FILTER	FILTRE D'CHUILE	22
010	OIL COOLER	RADIATEUR D'HUILE	24
011	OIL PAN	CARTER D'HUILE	26
012	COOLING WATER PIPE	CONDUITE D'EAU DE REFROIDISSEMENT	28
013	WATER PUMP	POMPE D'CEAU	30
014	COOLING FAN	VENTILATEUR	32
015	EXHAUST MANIFOLD	TUBULURE D'CECHAPPEMENT	34
016	INTAKE MANIFOLD	TUBULURE D'CENTREE	36
017	TURBO CHARGER	CHARGEUR DE TURBO	38
018	NOZZLE & HOLDER	INJECTEUR ET PORTE-INJECTEUR	40
019	INJECTION PIPE	ALIMENTATION ET INJECTION	42
020	INJECTION PUMP	POMPE D'INJECTION	44
021	INJECTION PUMP DRIVE	LECTEUR DE POMPE D'CLNJECTION	46
022	INJECTION PUMP MOUNTING	SUPPORT DE POMPE D'CLNJECTION	48
023	FUEL PIPE	PIPE DE CARBURANT	50
024	FUEL FILTER	FILTRE A GAZOLE	52
025	ALTERNATOR MOUNTING	SUPPORT D'CALTERNATEUR	54
026	STARTER	METTES EN MARCHE LE MOTEUR	56
027	PRESSURE GAUGE	INDICATEUR DE PRESSION	58
028	AIR CONDITIONER	CLIMATISATION	60
029	ENGINE MOUNTING	MOTAGE POUR MOTEUR	62
030	OVER HAUL GASKET KIT-TOP	PIECES DE RECHANGE	64
031	OVER HAUL GASKET KIT-ALL	PIECES DE RECHANGE	65-1

● BODY PARTS

Fig. 1100	MAIN FRAME	BATI PRINCIPAL	66
1110	ENGINE MOUNTING	MOTEUR	68
1120	RADIATOR	RADIATEUR	70
1130	RESERVE TANK	RESEVOIR	72
1140	MUFFLER	SILENCIEUX	74
1150	CAC PIPING	CHARGE DE REFROIDISSEUR D'CAIR	76
1160	AIR CLEANER ASS'Y	ENSEMBLE FILTRE A AIR	78
1165	AIR CLEANER	FILTRE A AIR	79-1

1170	PUMP MOUNTING	POMPE	80
1180	FUEL PIPING	CONDUITES DE GAZOLE	82
1190	FUEL TANK	RESERVOIR DE GAZOLE	84
1200	SWING DEVICE ASS'Y	SYSTEME D'ORIENTATION	86
1210	OIL TANK	RESERVOIR DE HUILE	88
1220	OIL COOLER PIPING(1)	CONDUITES DE HUILE	90
1230	OIL COOLER PIPING(2)	CONDUITES DE HUILE	92
1240	MAIN PIPING(1)	CONDUITES DE BATI PRINCIPAL	94
1250	MAIN PIPING(2)	CONDUITES DE BATI PRINCIPAL	96
1260	MAIN PIPING(3)	CONDUITES DE BATI PRINCIPAL	98
1270	MAIN PIPING(4)	CONDUITES DE BATI PRINCIPAL	100
1280	MAIN PIPING(5)	CONDUITES DE BATI PRINCIPAL	102
1290	ENGINE CONTROL	COMMANDE REGIME MOTEUR	104
1300	PILOT PIPING(1)	CONDUITES DE PILOTE	106
1310	PILOT PIPING(2)	CONDUITES DE PILOTE	108
1320	PILOT PIPING(3)	CONDUITES DE PILOTE	110
1330	PILOT PIPING(4)	CONDUITES DE PILOTE	112
1340	PILOT PIPING(5)	CONDUITES DE PILOTE	114
1350	PILOT PIPING(6)	CONDUITES DE PILOTE	116
1360	PILOT PIPING(7)	CONDUITES DE PILOTE	118
1370	PILOT PIPING(8)	CONDUITES DE PILOTE	120
1380	CONTROL STAND-L.H	CONSOLE DE COMMANDE	122
1390	CONTROL STAND-R.H	CONSOLE DE COMMANDE	126
1400	SEAT & ELECTRIC BOX COVER	SIEGE ET ELECTRIQUE BOITIES	128
1410	SEAT MOUNTING-EUROPE & U.S.A	SIEGE LE SUPPORT	130
1415	SEAT-EUROPE & U.S.A	SIEGE	132
1420	SEAT MOUNTING-EXCEPT EUROPE & U.S.A	SIEGE LE SUPPORT	134
1425	SEAT-EXCEPT EUROPE & U.S.A	SIEGE	136
1427	SEAT-EXCEPT EUROPE & U.S.A	SIEGE	137-1
1430	DUCT COVER	CONDUITES COUVERCLE	138
1440	HEATER COVER	BOITIES DE CHAUFFAGE	140
1450	CABIN MOUNT ASS'Y	SUPPORT DE CABINE	142
1460	CABIN ASS'Y	CABINE	144
1470	CABIN(1)	CABINE	148
1480	CABIN(2)	CABINE	152
1490	CABIN(3)	CABINE	156
1500	CABIN(4)	CABINE	158
1510	CABIN(5)	CABINE	160
1520	SUPPORT	SUPPORT	164
1530	COVER(1)	COUVERCLE	166
1540	COVER(2)	COUVERCLE	168
1550	COVER(3)	COUVERCLE	170
1560	COVER(4)	COUVERCLE	172
1570	COVER(5)	COUVERCLE	174
1580	UNDER COVER	TOLES IMFERIEVRES	176
1590	BAFFLE	COUVERCLE	178
1600	ACOUSTIC FOAM ASS'Y	ENSEMBLE DE EPONGE	180

1610	LUBRICATION PIPING	LUBRIFICATION	182
1620	ELECTRIC BOX ASS'Y(1)-BOX	EQUIPMENT ELECTRIQUE	184
1630	ELECTRIC BOX ASS'Y(2)-ELECTRIC PARTS	EQUIPMENT ELECTRIQUE	186
1640	ELECTRIC PARTS(1)-GAUGE & SWITCH PANEL	EQUIPMENT ELECTRIQUE	190
1650	ELECTRIC PARTS(2)-STAND R.H	EQUIPMENT ELECTRIQUE	192
1660	ELECTRIC PARTS(3)-STAND L.H	EQUIPMENT ELECTRIQUE	194
1670	ELECTRIC PARTS(4)-CABIN	EQUIPMENT ELECTRIQUE	196
1680	ELECTRIC PARTS(5)-BATTERY	EQUIPMENT ELECTRIQUE	198
1690	ELECTRIC PARTS(6)-ENGINE	EQUIPMENT ELECTRIQUE	200
1695	ALTERNATOR	ALTERNATEUR	202
1700	ELECTRIC PARTS(7)-RELATED PARTS	EQUIPMENT ELECTRIQUE	204
1710	ELECTRIC WIRING(1)-BATTERY	POSE DE FILES ELECTRIQUES	206
1720	ELECTRIC WIRING(2)-ENGINE	POSE DE FILES ELECTRIQUES	208
1730	ELECTRIC WIRING(3)-RELATED PARTS	POSE DE FILES ELECTRIQUES	210
1740	AIRCONDITIONER(1)	REFRIGERATION	212
1750	AIRCONDITIONER(2)-AIRCON UNIT	REFRIGERATION	216
1760	HEATER PIPING	CONDUITES DE CHAUFFAGE	218

● TRACK PARTS

Fig. 2100	TRACK FRAME-TRACK WIDTH 3280mm	TRAIN DE ROULEMENT	220
2105	TRACK FRAME-TRACK WIDTH 3000mm OPTION	TRAIN DE ROULEMENT	221-1
2110	TRAVEL DEVICE	SYSTEME D'TRANSLATION	222
2120	IDLER	BARBOTIN	224
2130	TRACK SPRING-TRACK WIDTH 3280mm	TENDEUR DE CHENILLE	226
2135	TRACK SPRING-TRACK WIDTH 3000mm OPTION	TENDEUR DE CHENILLE	228
2140	UPPER ROLLER	GALET SUPERIEUR	230
2150	LOWER ROLLER	GALET INFERIEUR	232
2160	TRACK SHOE ASS'Y-600G	MAILLON DE CHAINE	234
2170	CENTER JOINT	JOINT CENTRAL	236
2180	TRAVEL PIPING COVER	COUVERCLE DE TRANSLATION	238
2190	TRAVEL PIPING-TRACK WIDTH 3280mm	CONDUITES DE TRANSLATION	240
2195	TRAVEL PIPING-TRACK WIDTH 3000mm OPTION	CONDUITES DE TRANSLATION	241-1

● FRONT PARTS

Fig. 3100	BOOM-6.5m	FLECHE	242
3110	ARM-3.2m	BALANCIER	244
3120	BUCKET-1.3m ³	GODET	246
3130	BOOM PIPING	CONDUITES DE FLECHE	248
3140	ARM PIPING	CONDUITES DE BALANCIER	250
3150	FRONT LUBRICATION PIPING	TUYAUTERIE AVANT DE LUBRIFICATION	252

● HYDRAULIC COMPONENTS

Fig. 4100	MAIN PUMP	POMPE	254
4110	MAIN PUMP-PUMP	POMPE	256
4120	MAIN PUMP-CONTROL	POMPE	262
4130	MAIN PUMP-COVER & HYD. LINE	POMPE	266
4140	SWING MOTOR	MOTEUR D'ORIENTATION	268

4150	SWING REDUCTION GEAR	REDEUTEUR D'ORIENTATION	270
4151	SWING REDUCTION GEAR	REDEUTEUR D'ORIENTATION	271-1
4160	TRAVEL MOTOR	MOTEUR DE TRANSLATION	272
4165	TRAVEL MOTOR-KOREA	MOTEUR DE TRANSLATION	276
4170	TRAVEL REDUCTION GEAR	BOITE REDUCTEUR	280
4175	TRAVEL REDUCTION GEAR-KOREA	BOITE REDUCTEUR	284
4180	CONTROL VALVE(1)	DISTRIBUTEUR	288
4190	CONTROL VALVE(2)	DISTRIBUTEUR	290
4200	CONTROL VALVE(3)	DISTRIBUTEUR	292
4210	REMOTE CONTROL VALVE	VANNE DE COMMAND A DISTANCE	296
4220	REMOTE CONTROL VALVE-3 SWITCH	VANNE DE COMMAND A DISTANCE	300
4230	PEDAL VALVE	VANNE DE PEDALE	304
4240	SOLENOID VALVE	VANNE DE SOLENOIDE	306
4250	PILOT VALVE	VANNE	308
4260	BREAKER VALVE	VANNE DE BRISEUR	310
4270	BOOM CYLINDER-R.H	VERIN DE FLECHE	312
4280	BOOM CYLINDER-L.H	VERIN DE FLECHE	316
4290	ARM CYLINDER	VERIN DE BALANCIER	320
4300	BUCKET CYLINDER	VERIN DE GODET	324
4310	BUCKET CYLINDER-2.6m ARM	VERIN DE GODET	328
4320	BOOM CYLINDER(L.H)-LOCK VALVE	VERIN DE FLECHE	332
4330	BOOM CYLINDER(R.H)-LOCK VALVE	VERIN DE FLECHE	336
4340	ARM CYLINDER-LOCK VALVE	VERIN DE BALANCIER	340

● OTHER PARTS

Fig. 5100	TOOLS	OUTILLAGE	344
5110	SPARE PARTS	PIECES DE RECHANGE	348
5120	NAME PLATE-ENGLISH	PLAQUE D'IDENTIFICATION	350
5130	NAME PLATE-EUROPE	PLAQUE D'IDENTIFICATION	352

● OPTION PARTS

Fig. 6100	FUEL FILLER PUMP ASS'Y	POMPE	356
6110	NOISE FILTER ASS'Y-EUROPE	FILTRE	358
6120	ACOUSTIC FOAM-EUROPE OPT.	ENSEMBLE DE EPONGE	360
6130	COVER-EUROPE OPT.	COUVERCLE	362
6140	SIDE DOOR ASS'Y-NOISE KIT FOR EUROPE	PORTE	364
6150	JOYSTICK VALVE ASS'Y-3 SWITCH	VANNE DE COMMAND A DISTANCE	366
6160	CABIN LAMP ASS'Y	LAMPE	368
6170	6-LAMP & BEACON(TELESCOPIC)	LAMPE & FEU DE CIRCULATION	370
6180	ROTATING BEACON	FEU DE CIRCULATION	372
6190	TRAVEL/SWING ALARM ASS'Y	SIGNALISATEUR	374
6200	TRAVEL ALARM ASS'Y	ALARME DE VOYAGE	376
6210	RETURN FILTER PRESS SWITCH	COMMUTATEUR DE FILTRE DE RETURUN	378
6220	ALTERNATOR	ALTERNATEUR	380
6230	SUN VISOR ASS'Y	PARE-SOLEIL	382
6240	SUN ROOF ASS'Y	COUVERTURE DE TOIT	384
6250	FLOOR PLATE-TILTING	TOLE DE PLANCHER	386

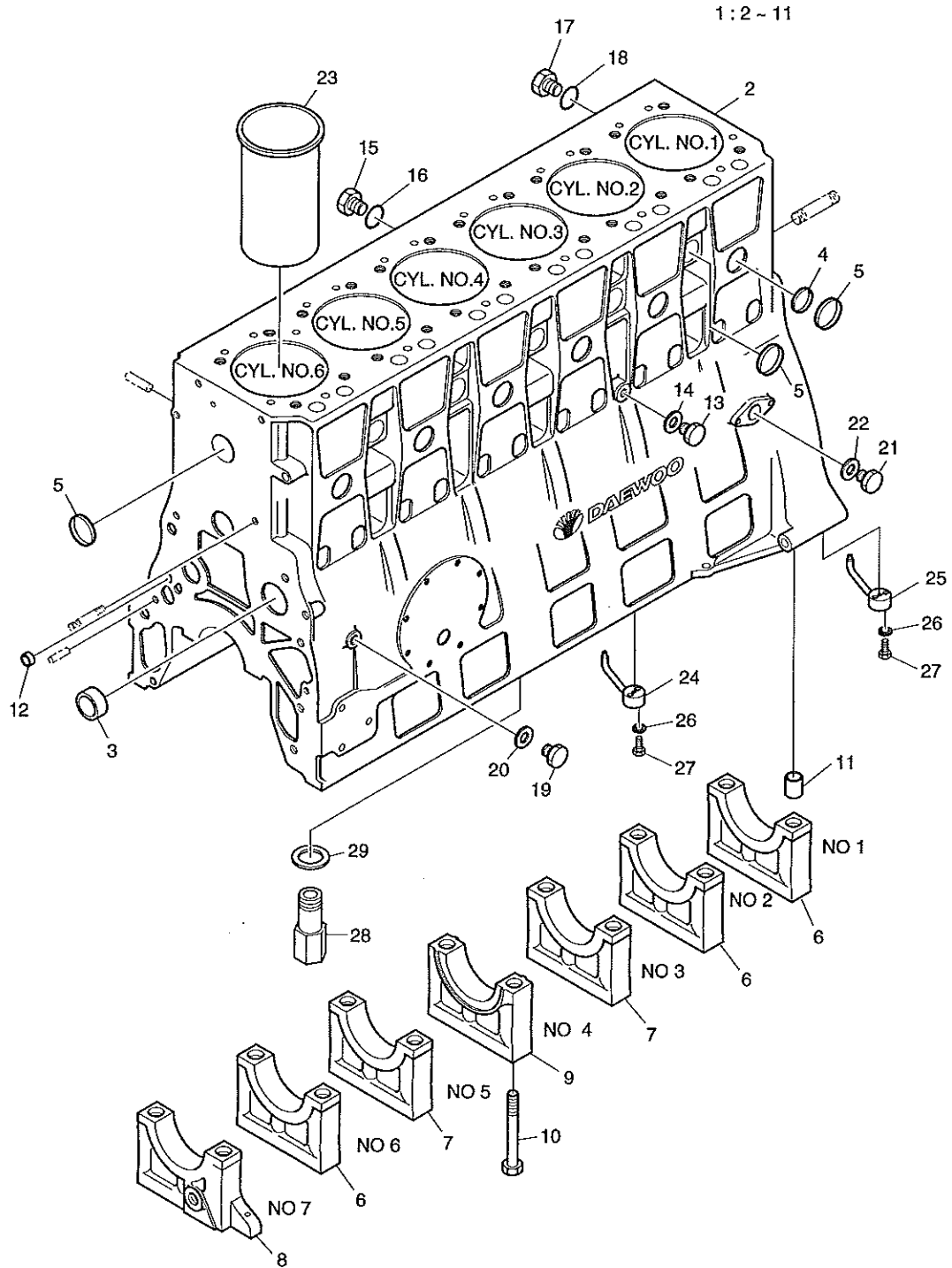
6260	OVERLOAD WARNING ASS'Y	AVERTISSEMENT DE SURCHARGE	388
6270	TRACK SHOE-OPT.	ENSEMBLE MAILLON DE CHAINES	390
6280	SEALED TRACK SHOE-OPT.	ENSEMBLE MAILLON DE CHAINES	392
6290	ARM-4.0m	BALANCIER	394
6300	ARM PIPING-4.0m	CONDUITES DE BALANCIER	396
6310	ARM-2.6m	BALANCIER	398
6320	ARM PIPING-2.6m	CONDUITES DE BALANCIER	400
6330	BUCKET-1.1m ³	GODET	402
6340	BUCKET-1.4m ³	GODET	404
6350	BUCKET-1.6m ³	GODET	406
6360	BUCKET-1.3m ³ H.D TYPE(ESCO)	GODET	408
6370	BUCKET-1.09m ³ (42")-SIDE PIN	GODET	410
6380	BUCKET-1.09m ³ (42")-VERTICAL PIN	GODET	412
6390	BUCKET-1.29m ³ (48")-SIDE PIN	GODET	414
6400	BUCKET-1.29m ³ (48")-VERTICAL PIN	GODET	416
6410	BUCKET-1.48m ³ (54")-SIDE PIN	GODET	418
6420	BUCKET-1.48m ³ (54")-VERTICAL PIN	GODET	420
6430	BUCKET-1.60m ³ (57")-SIDE PIN	GODET	422
6440	BUCKET-1.60m ³ (57")-VERTICAL PIN	GODET	424
6450	BUCKET-1.80m ³ (63")-SIDE PIN	GODET	426
6460	BUCKET-1.80m ³ (63")-VERTICAL PIN	GODET	428
6470	MAIN PIPING-ONE & TWO WAY	CONDUITES DE BATI PRINCIPAL	430
6480	PILOT PIPING-BREAKER	CONDUITES DE PILOTE	432
6490	BOOM PIPING-ONE WAY	CONDUITES DE FLECHE	434
6500	ARM PIPING-ARM 3.2m(ONE WAY)	CONDUITES DE BALANCIER	436
6510	ARM PIPING-ARM 2.6m(ONE WAY)	CONDUITES DE BALANCIER	438
6520	ARM PIPING-ARM 4.0m(ONE WAY)	CONDUITES DE BALANCIER	440
6530	NAME PLATE-ONE & TWO WAY	PLAQUE D'IDENTIFICATION	442
6540	LOCK VALVE PIPING	CONDUITES DE VERROU VANNE	444
6550	ADDITIONAL WORKING LAMP	LAMPE DE FONCTIONNEMENT	448
6560	F.O.G.S ASS'Y	GARADE	450
6570	CABIN LOW GUARD	GARADE	452
6580	TROPICAL COVER	COUVERCLE	454

● WORLDWIDE NETWORK

DATE	JUL. 30, 2003
REV. NO.	EXB03-13

Fig. 001 CYLINDER BLOCK
BLOC CYLINDRES

Serial No. ;



DATE	JUL. 30, 2003
REV. NO.	EXB03-13

Fig. 001 CYLINDER BLOCK BLOC CYLINDRES

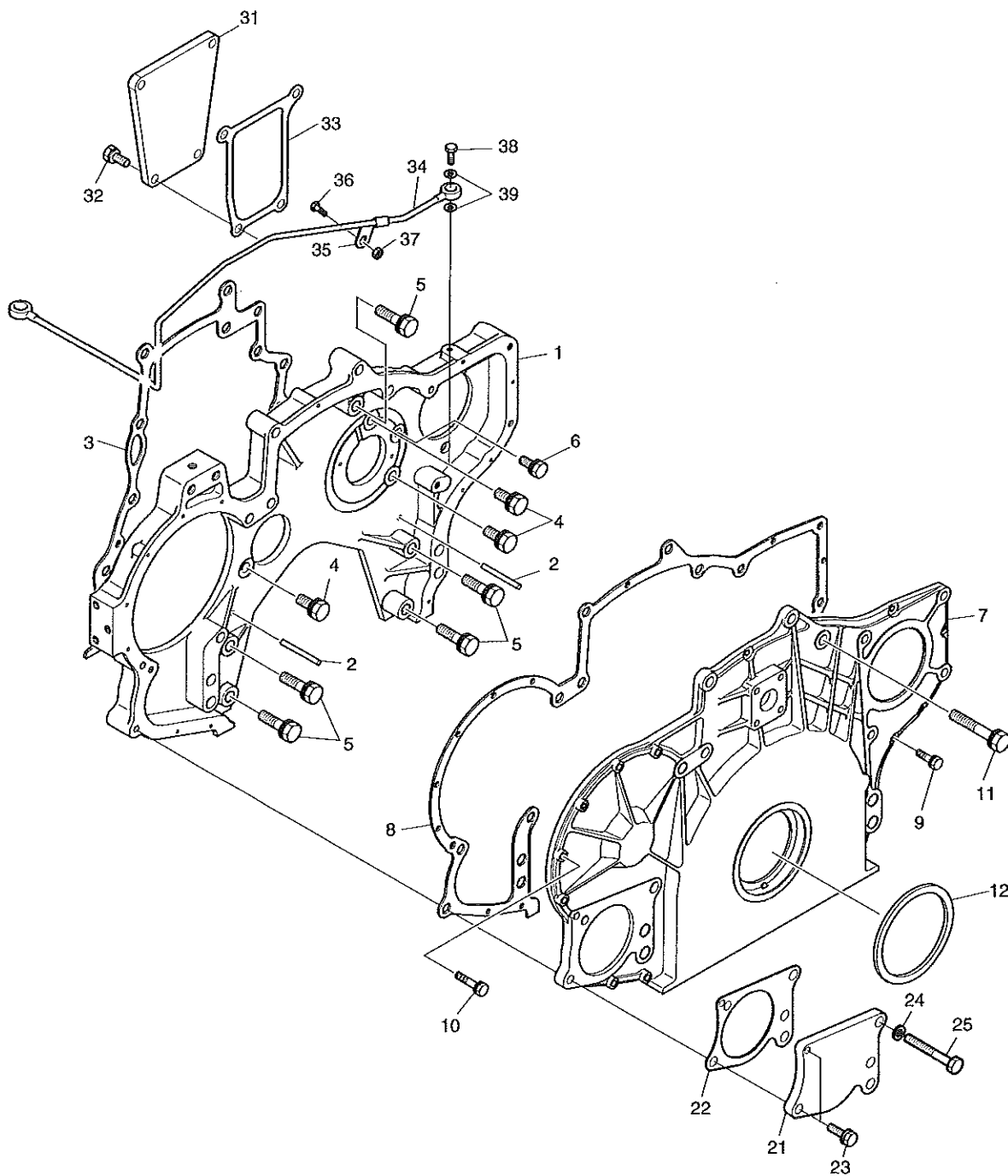
Serial No ;

Key No.	Part No.	Description	Description	Q'ty	S.C	Serial No.	ICA	Replaceable part	
								Part No.	Q'ty
001-1	65.01101-6213A	CYLINDER BLOCK ASS'Y	BLOC DE CYLINDRE	1		~020227	Y	65.01101-0212B	1
	65.01101-6213B	CYLINDER BLOCK ASS'Y	BLOC DE CYLINDRE	1		020228~			
2	65.01101-0212	. BLOCK;CYLINDER	. DOUILLE	1	D	~020227			
	65.01101-0212A	. BLOCK;CYLINDER	. DOUILLE	1	D	020228~			
3	65.04410-0016	. BUSH;CAM SHAFT	. DOUILLE	4	B				
4	65.90302-0048	. PLUG;CORE	. BOUCHON DE	6					
5	06.15091-0326	. PLUG;CORE	. BOUCHON DE CHEMISE	15					
6	65.01105-1177A	. BEARING;CAP NO.2.6	. PALIER	3	D				
7	65.01105-1180A	. BEARING;CAP	. PALIER	2	D				
8	65.01105-1179B	. BEARING;CAP NO.1	. PALIER	1	D				
9	65.01105-1178A	. CAP BEARING;THRUST	. CHAPEAU	1	D				
10	65.90020-0036B	. BOLT;BEARING CAP	. BOULON A 6 PANS	14					
11	65.91710-0035	. RING;LOCATING	. BAGUE DE CENTRAGE	14		~030428	Y	65.91710-0035B	14
	65.91710-0035B	. RING;LOCATING	. BAGUE DE CENTRAGE	14		030429~			
12	65.91606-0041	PLUG;CORE HOLE	BOUCHON	2					
13	65.90310-0137	SCREW;PLUG M16X1.5X20	BAGUE D'ETANCHEITE	1					
14	06.56190-0708	RING;SEAL	BAGUE D'ETANCHEITE	1					
15	65.90310-0136	SCREW;PLUG	VIS	1					
16	06.56190-0718	RING;SEAL	BAGUE	1					
17	06.08092-2403	SCREW;PLUG M12X1.5	BAGUE D'ETANCHEITE	1					
18	06.56190-0703	RING;SEAL	VIS	1					
19	65.90310-0131	SCREW;PLUG	VIS	1					
20	06.56190-0712	RING;SEAL	BAGUE D'ETANCHEITE	1					
21	65.90310-0149A	SCREW;PLUG M26X1.5	VIS	1					
22	06.56190-0726	RING;SEAL	BAGUE D'ETANCHEITE	1					
23	65.01201-0072	LINER;CYLINDER	RONDELLE DE BUTEE	6					
24	65.01601-6006	OIL SPRAY NOZZLE(NO.1. 4. 5)	BEC	3					
25	65.01601-6007	OIL SPRAY NOZZLE(NO.2. 3. 6)	BEC	3					
26	65.90001-0126	BOLT;HEX	BOULON A 6 PANS	12					
27	06.16044-0208	WASHER;SPRING	RONDELLE PLATE	12					
28	65.05405-7021	RELIEF VALVE ASS'Y	CLAPET DE DECHARGE	1					
29	06.56190-0704	RING;SEAL	BAGUE D'ETANCHEITE	1					

DATE	OCT. 05, 2002
REV.NO.	EXB02-09

**Fig. 002 TIMING GEAR CASE
CARTER DE DISTRIBUTION**

Serial No. ;



DATE	OCT. 05, 2002
REV. NO.	EXB02-09

Fig. 002 TIMING GEAR CASE CARTER DE DISTRIBUTION

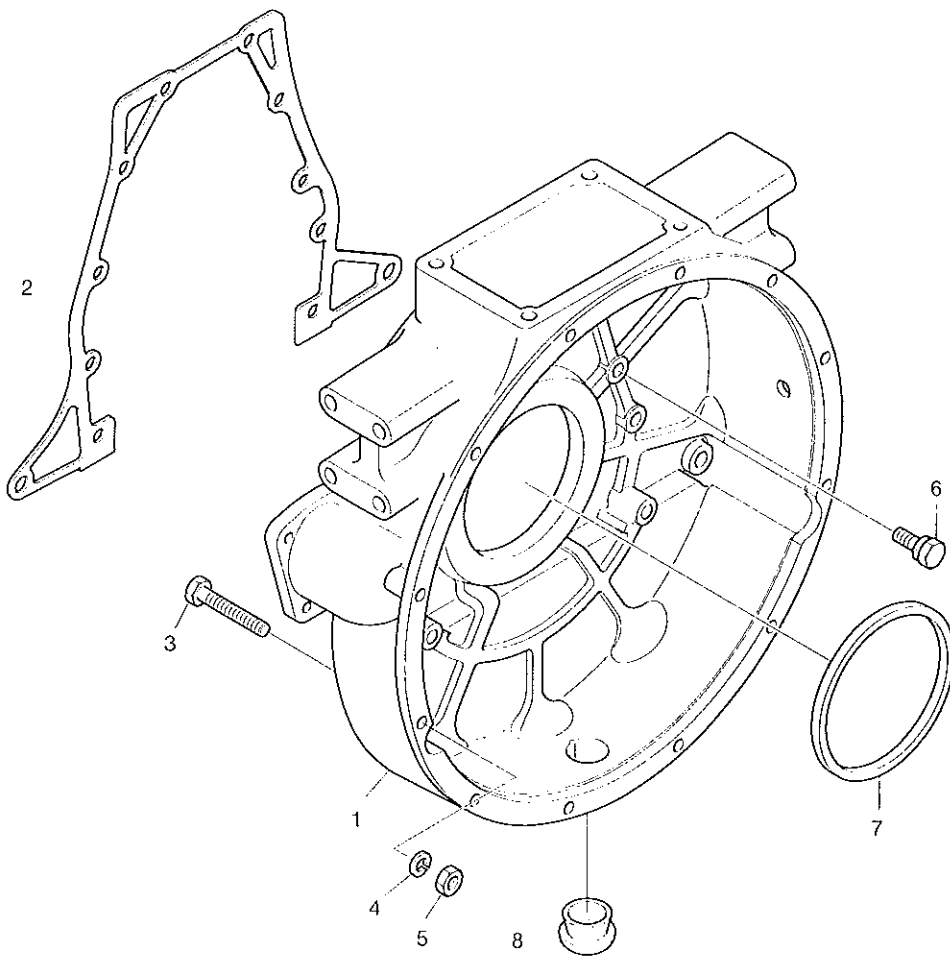
Serial No ;

Key No.	Part No.	Description	Description	Q'ty	S.C	Serial No.	ICA	Replaceable part	
								Part No.	Q'ty
002-1	65.01304-0023C	CASE;TIMING GEAR	CAS DE VITESSE DE	1					
2	65.91010-0017	PIN;DOWEL M6X60	GOUPILLE D'AJUSTAGE	2					
3	65.01903-0048B	GASKET	JOINT	1					
4	06.01943-3317	BOLT ASS'Y M12X1.5X30	BOULON A 6 PANS	3					
5	06.01943-3320	BOLT ASS'Y M12X1.5X45	BOULON A 6 PANS	5					
6	06.01913-3215	BOLT ASS'Y M10X25	BOULON A 6 PANS	1					
7	65.01305-5049F	T.G.C. COVER ASS'Y	COUVERCLE	1		~020111	Y	65.01305-5049G	1
	65.01305-5049G	T.G.C. COVER ASS'Y	COUVERCLE	1		020112~			
8	65.01903-0050	GASKET;T.G.C. COVER	COUSSINET COTE STD	1					
9	06.01923-2914	BOLT ASS'Y M6X22	BOULON A 6 PANS	6					
10	06.01923-2917	BOLT ASS'Y M6X30	BOULON A 6 PANS	7					
11	06.01953-3326	BOLT ASS'Y M12X1.5X75	BOULON A 6 PANS	3					
12	65.01510-0157	SEAL;OIL	JOINT	1					
21	60.91601-0010	COVER	COUVERCLE	1					
22	65.47901-0010	GASKET;P/S PUMP	PALIER	1					
23	06.01913-3219	BOLT ASS'Y M10X40	BOULON A 6 PANS	2					
24	06.01013-9221	BOLT;HEX M10X80	BOULON A 6 PANS	1					
25	06.16731-2108	WASHER;SPRING	RONDELLE ELASTIQUE	1					
31	65.91601-0003	COVER;BLIND	COUVERCLE	1					
32	06.01924-3217	BOLT ASS'Y	BOULON A 6 PANS	4					
33	65.54901-0025A	GASKET;AIR COMPRESSOR	JOINT	1					
34	65.05701-5361	OIL PIPE ASS'Y	CONDUITE	1					
35	65.97401-0152	CLIP;PIPE	ATTACHE	1					
36	06.01913-2910	BOLT;HEX M6X12	BOULON A 6 PANS	1					
37	06.11063-8212	NUT;HEX M6	ECROU	1					
38	65.98150-0056	SCREW;HOLLOW	VIS CREUSE	1					
39	06.56180-0712	RING;SEAL	BAGUE D'ETANCHEITE	2					

DATE	OCT. 15, 2001
1st EDITION	

Fig. 003 FLYWHEEL HOUSING
CARTER DE VOLANT MOTEUR

Serial No. ;



DATE	OCT. 15, 2001
1st EDITION	

**Fig. 003 FLYWHEEL HOUSING
CARTER DE VOLANT MOTEUR**

Serial No. ;

Key No.	Part No.	Description	Description	Q'ty	S.C	Serial No.	ICA	Replaceable part	
								Part No.	Q'ty
003-1	65.01401-0099	HOUSING;FLY WHEEL	CARTER	1					
2	65.01904-0022A	GASKET;FLY WHEEL	COUSSINET COTE	1					
3	06.02074-0317	BOLT;REAMER M14X2X90	BOULON A 6PANS	2					
4	06.16731-2110	WASHER;SPRING	RONDELLE ELASTIQUE	2					
5	06.11063-8217	NUT;HEX M14	ECROU	2					
6	65.90001-6002	BOLT ASS'Y M12X1.5X45	BOULON A 6PANS	10					
7	65.01510-0158	SEAL;OIL	JOINT	1					
8	65.96002-0003	PLUG;RUBBER	BOUCHON CAOUTCHOUC	1					

DATE	JUL. 30, 2003
REV. NO.	EXB03-13

Fig. 004 DRIVING SYSTEM
SYSTEME D'CENTRAINEMENT

Serial No. ;

