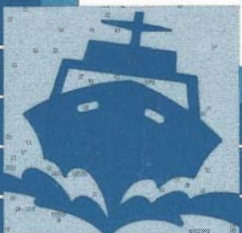
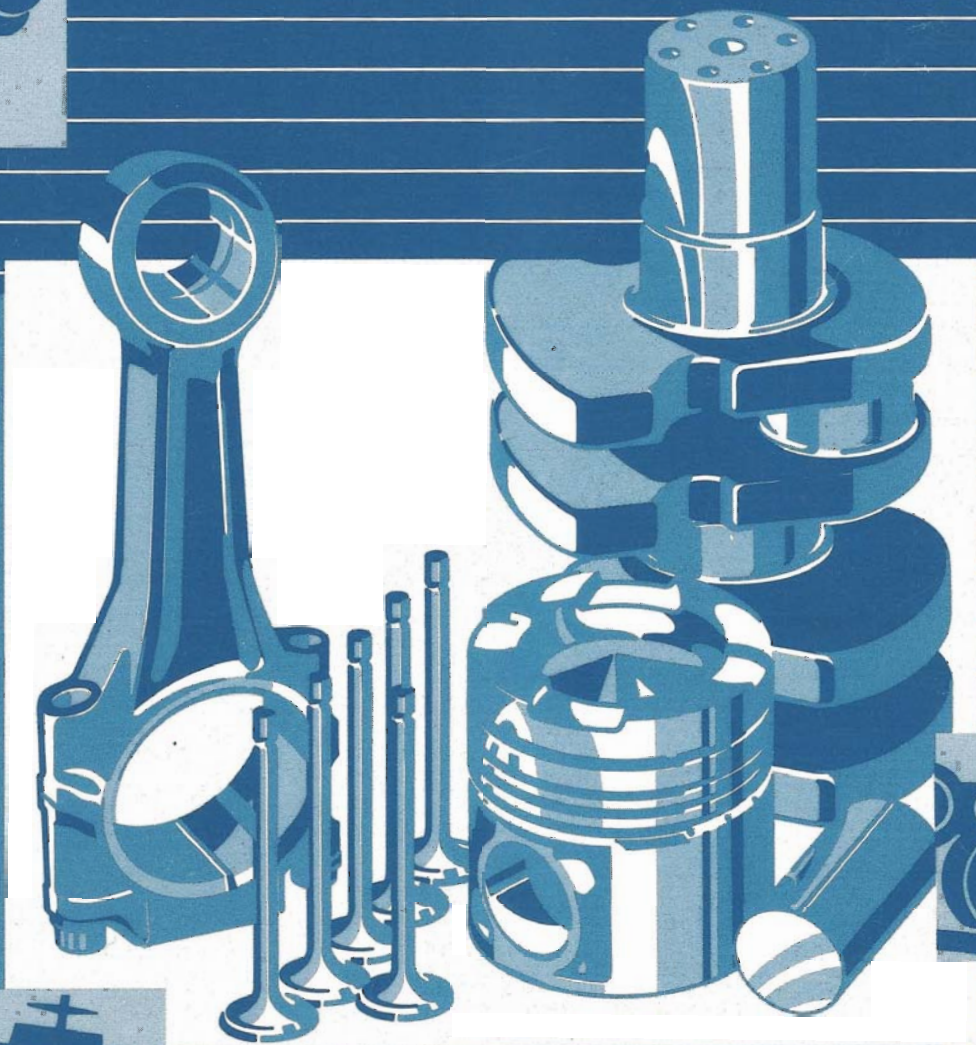




Parts Catalog

LTA10-G1/G2/G3

Generator Drive

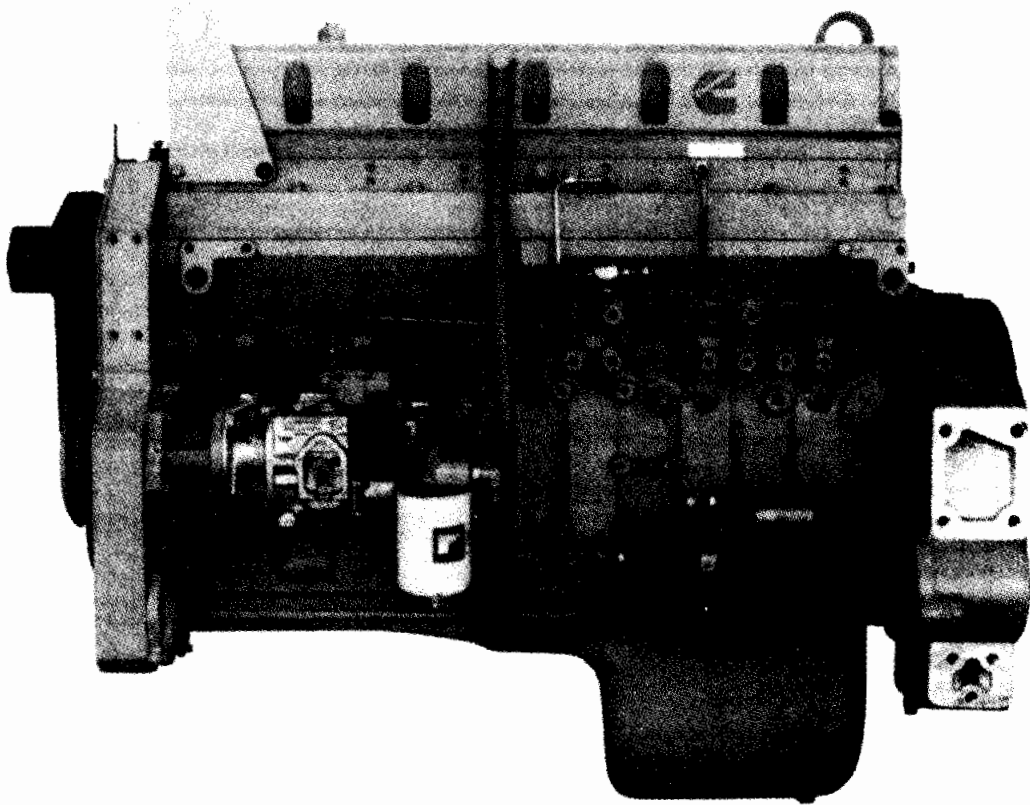




Parts Catalog

LTA10-G1/G2/G3

Generator Drive





Cummins Engine Co., Inc.

New Parts Warranty Heavy Duty

COVERAGE

PRODUCTS WARRANTED

These warranties apply to New Parts marketed by Cummins for its engines (except those for A, B, and C series engines). They apply anywhere in the world where service is available through a Cummins distributor or full service dealer.*

BASE WARRANTY

The Base Warranty covers any failures of parts on or after March 31, 1986, which result, under normal use and service, from defects in workmanship or material (Warrantable Failures). The coverage on cylinder kits designated by Cummins as "Premium Plus" extends two years, 200,000 miles (321,870 kilometers) or 7,200 hours of operation, whichever occurs first, from the date of first installation. The coverage on other parts extends one year, 100,000 miles (160,935 kilometers) or 3,600 hours of operation, whichever occurs first, from the date of first installation.

EXTENDED MAJOR COMPONENTS WARRANTY

The Extended Major Components Warranty covers Warrantable Failures on or after March 31, 1986, of engine cylinder blocks, crankshafts, flangeless NT camshafts* and connecting rods (Covered Parts). Bushing and bearing failures are not included. This coverage begins with the expiration of the Base Warranty and ends three years, 300,000 miles (482,805 kilometers) or 10,800 hours of operation, whichever occurs first, from the date of first installation.

Both the Base Warranty and Extended Major Components Warranty apply to all Owners in the chain of distribution, and coverage continues to all subsequent Owners until the end of the respective periods of coverage.

CUMMINS RESPONSIBILITIES

DURING THE BASE WARRANTY

Cummins will pay for all parts and labor needed to repair the damage to the engine resulting from the Warrantable Failure. All labor costs will be paid in accordance with Cummins published Standard Repair Operation guidelines.

Cummins will pay for the lubricating oil, antifreeze, filter elements, and other maintenance items that are not reusable due to the Warrantable Failure.

Cummins will pay reasonable labor costs for engine removal and reinstallation when necessary to make the warranty repair.

When the parts are installed in a non-automotive engine, Cummins will pay reasonable travel expenses for mechanics to and from the engine site, or the repair dock in the case of a marine engine, including meals, mileage and lodging when it is necessary for mechanics to make on-site warranty repairs.

DURING THE EXTENDED MAJOR COMPONENTS WARRANTY

Cummins will pay for the Covered Part and for any Covered Part damaged by a Warrantable Failure of another Covered Part.

OWNER RESPONSIBILITIES

DURING THE BASE WARRANTY

Before expiration of the warranty, Owner must give notice to a Cummins distributor or full service dealer* of a failure considered to be warrantable and have the repair performed by such facility.

If the part was installed in an automotive engine, the Owner must deliver the engine to the repair location. If installed in a marine engine, Owner is responsible for the cost of towing the boat to a repair dock and for any associated docking and harbor charges.

Owner is responsible for the cost of lubricating oil, antifreeze, filter elements and other maintenance items replaced during warranty repairs except where such items are not reusable due to a Warrantable Failure.

DURING THE EXTENDED MAJOR COMPONENTS WARRANTY

Before expiration of the warranty, Owner must give notice to a Cummins distributor or full service dealer* of a failure considered to be warrantable and deliver the defective and damaged Covered Parts to such facility.

Owner is responsible for the cost of all parts needed for the repair except for the defective Covered Part and for any Covered Part damaged by a Warrantable Failure of another Covered Part.

Owner is responsible for the cost of all labor needed to repair the engine, including the labor to remove and reinstall the engine. When Cummins elects to repair a part instead of replacing it, Owner is not responsible for the labor needed to repair the part.

Owner is responsible for the cost of lubricating oil, antifreeze, filter elements and other maintenance items replaced during the repair.

DURING BOTH WARRANTIES

At the time when the parts are installed, Owner is responsible for the preparation of a written record containing the following: (1) the date of installation of the parts; (2) the engine serial number; (3) the engine miles, hours or kilometers of operation; (4) the parts installed, and (5) the location of the parts in the engine. The purpose of this record is to protect Owner's interests and support any claim for a Warrantable Failure.

Owner is responsible for the operation and maintenance of the engine as specified in Cummins Operation and Maintenance Manuals.

Owner is responsible for communication expenses, meals, lodging and similar costs incurred by Owner as a result of a Warrantable Failure. Owner is responsible for non-engine repairs and for "down time" expenses, cargo damage and all business costs and losses resulting from a Warrantable Failure. CUMMINS IS NOT RESPONSIBLE FOR INCIDENTAL OR CONSEQUENTIAL DAMAGES.

LIMITATIONS

Cummins is not responsible for failures resulting from Owner or Operator abuse or neglect, such as: operation without adequate coolant, fuel or lubricants; overfueling; overspeeding; lack of maintenance of lubricating, cooling or air intake systems; improper storage, starting, warm-up, run-in or shutdown practices. Cummins is also not responsible for failures caused by incorrect fuel, or by water, dirt or other contaminants in the fuel.

Cummins does not warrant parts supplied by Cummins which bear the name of another company. These parts are warranted by their manufacturers and not by Cummins. This category of parts includes, but is not limited to: hydraulic pumps, alternators, starters, fans, air conditioning compressors, clutches, steering pumps, transmissions, torque converters, marine gears, air cleaners, filters and non-Cummins air compressors, power steering pumps, and engine compression brakes.

Parts provided may be new Cummins, Cummins approved rebuilt parts, or repaired parts. Cummins is not responsible for failures resulting from the use of parts not approved by Cummins.

Before a claim for excessive oil consumption will be considered, Owner must submit adequate documentation to show that consumption exceeds Cummins published standards.

This warranty does not apply to parts furnished by Cummins at no charge to the Owner.

INVEST IN THE BEST

Product Identification Information

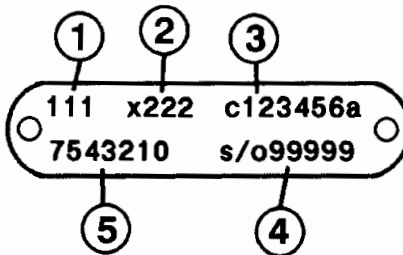
Data plates should be referred for parts identification.

1. ENGINE DATA PLATE

<div style="display: flex; justify-content: space-between;"> 3 Engine No. 1 S.O. No. </div>	
<div style="display: flex; justify-content: space-between;"> 2 Model Ref. No. </div>	
<div style="display: flex; justify-content: space-between;"> Advertised Engine Cert </div>	<div style="display: flex; justify-content: space-between;"> C.I.D. Family C.P.L. 4 </div>
<div style="display: flex; justify-content: space-between;"> Conf. No. Indent. </div>	
<div style="display: flex; justify-content: space-between;"> Date of mfg. Warranty start date </div>	
Manufactured by Cummins Engine Co.	

1. Shop order number
2. Model designation
3. Engine serial number
4. Control parts list

2. FUEL PUMP DATA PLATE



1. Control parts list number
2. Calibration code
3. Serial number
4. Top level number
5. Fuel pump assembly number

This catalog was compiled by Carolyn Cox in Parts Communications.

Customer Service Information

This standard Parts Catalog contains parts information for the following Cummins Engine Model(s):

LTA10-G1	D343123GX02	CPL 1429
LTA10-G2	D343123GX02	CPL 1443
LTA10-G3	D343123GX02	CPL 1444

Certain basic engine components have been matched to give optimum performance to your engine. The part numbers listed in this catalog for these components are for a standard engine configuration. When ordering any of the Control Parts List (CPL) components listed below, please order by part description and engine serial number. Reference to the CPL number stamped on the engine data (name) plate will also help identify the proper service parts for your engine.

Control Parts List (CPL) Components

Camshaft	Page 68	Piston, Engine	Page 67
Cylinder Head	Page 71	Turbocharger	Page 75, 77, 79
Injector	Page 73	Exhaust Manifold	Page 86

USER INFORMATION

- . Parts numbers appearing in () are for identification purposes only and should not be used when ordering service replacement parts.
- . The reference numbers appearing on the art pages is for publication use only.
- . Assembly content is shown by part number indentation.
- . Options are engineered production part groupings, specifically used for compiling engine orders.
- . Option numbers are for reference only and are not sold for service.
- . Use assembly and not option content to determine service parts replacement.

ALWAYS SPECIFY ENGINE MODEL AND SERIAL NUMBER WHEN ORDERING PARTS FROM THIS CATALOG

Engine Model _____ Engine Serial No. _____

MFG Make _____ Model _____ Chassis No. _____

Fuel Pump Assembly No. _____ Injector No. _____

Belt, Fan _____ Belt, Water Pump _____ Belt, Gen. _____

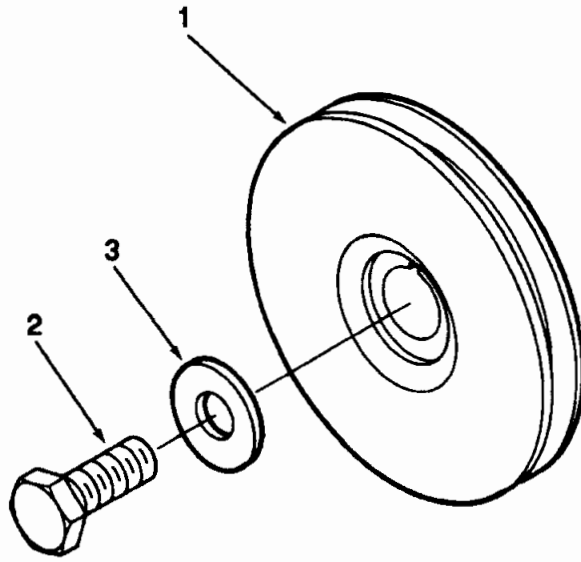
Element, Fuel Filter _____ Full Flow Lub. Filter _____

Air Cleaner _____ By-Pass Lub. Filter _____

Special Equipment

Table of Contents

	Page No.		Page No.
Accessory Drive Cover Plate	23	Oil Pan	63
Accessory Drive Pulley	2, 80	Oil Pan Plumbing	64
Aftercooler	85	Repair Kits	103, 104
Alternator	26	Rocker Lever & Housing	5
Alternator Mounting	27	Starting Motor	84
Breather Plumbing	20	Starting Motor Mounting	82
Cam Follower	7	Thermostat	25
Camshaft	68	Thermostat Housing	89
Camshaft Keys	69	Turbocharger	75, 77, 79
Connecting Rod	65	Turbocharger Plumbing	91
Corrosion Resistor	95	Valve Cover	92
Crankshaft	13	Vibration Damper	21
Cummins EFC Governor	37	Water Header Cover	97
Cylinder Block	11	Water Pump	99
Cylinder Head	71	Option Number Index	A-1
Cylinder Liner Kit	12	Part Number Index	B-1
Dataplate	3		
Dipstick and Oil Filler	61		
EFC Governor Actuator	46		
Engine Fan	34		
Engine Piston Kit	67		
Exhaust Manifold	86		
Exhaust Outlet Connection	100		
Fan Drive	31		
Fan Pilot Spacer	83		
Flywheel And Ring Gear	52		
Flywheel Housing	33		
Front Engine Support	28		
Front Gear Cover	9		
Fuel Filter	32		
Fuel Pump	38		
Fuel Pump Damper	45		
Fuel Pump Drive	24		
Fuel Pump Front Cover	43		
Fuel Pump Gear	44		
Fuel Pump Housing	41		
Fuel Tubing	49		
Fuel Valve	51		
Gasket Sets	101, 102		
Gear Housing	19		
Idler Gears	17		
Injectors	73		
Lifting Bracket	53		
Lubricating Oil Cooler	55		
Lubricating Oil Filter	56		
Lubricating Oil Pump	59		
Magnetic Pickup	29		
Magnetic Switch	81		
Main Bearings	15		

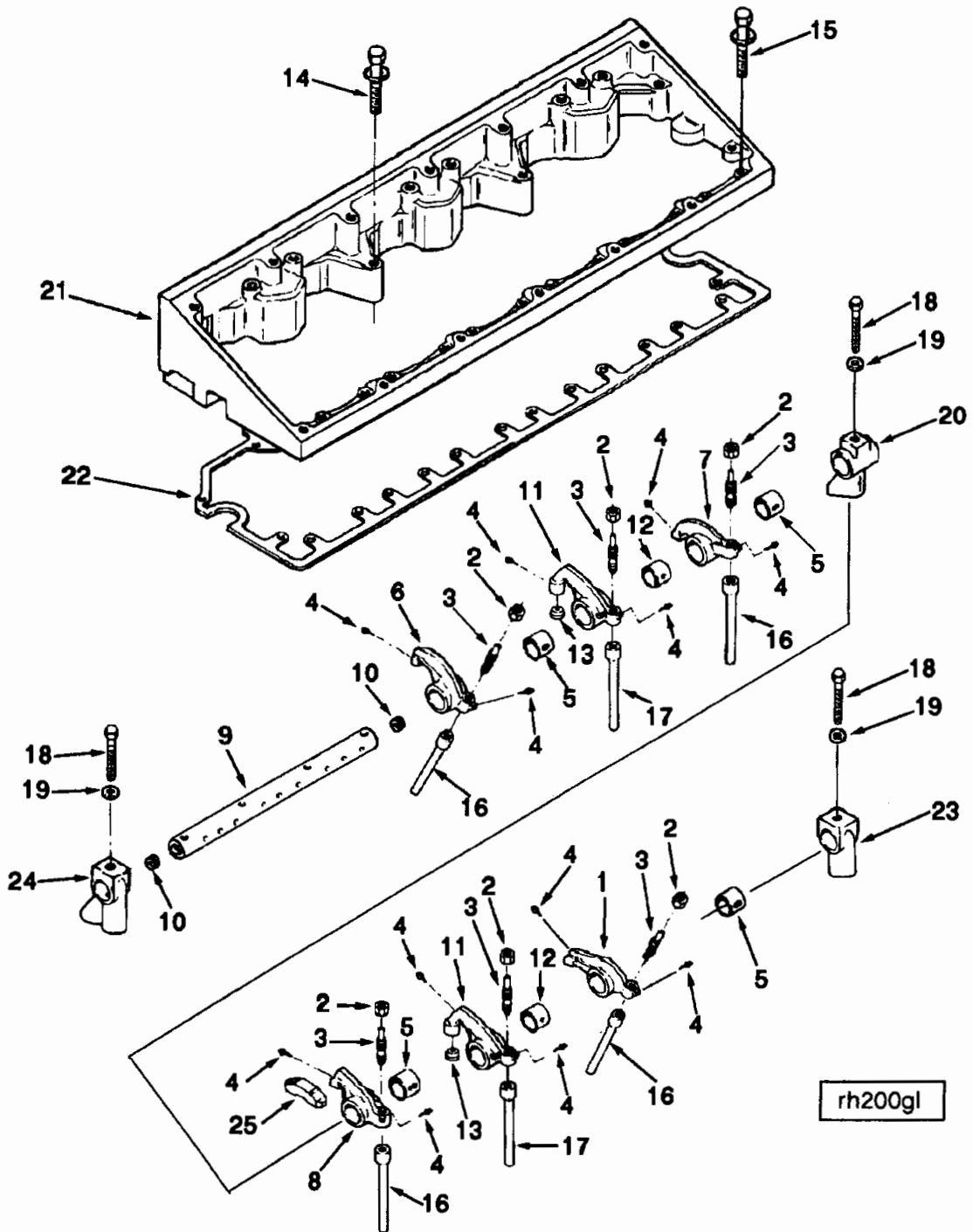


ad200gj

Ref No.	Part Number	Part Name	Req	Remarks
		ACCESSORY DRIVE PULLEY OPTION AD2023		Accessory drive pulley located on front of left side of engine facing flywheel (fuel pump side) to turn freon compressor. Single groove 1/2 inch v belt pulley is 7.48 inch (190 mm) diameter and turns at engine speed in same direction as crankshaft. Use on fuel pump side only.
1	3046203	Pulley, Accessory Drive	1	
2	3818229	Screw, Hexagon Head Cap	1	M20 x 2.50 x 50
3	3818463	Washer, Plain	1	

Dataplate

Ref No.	Part Number	Part Name	Req	Remarks
		DATAPLATE		
		OPTION AP2702		
	3029432	Dataplate	1	Dataplate for LTA-10G G-drive engine operating at 1800 or 1500 RPM.
		OPTION AP2703		
	3055644	Dataplate	1	Dataplate for LTA-10G G-drive engine operating at 1200 RPM



Ref No.	Part Number	Part Name	Req	Remarks
		ROCKER LEVER & HOUSING		
		OPTION BP2716		
				Standard rocker lever arrangement.
			3	Exhaust, Cylinders 2,4,6.
1	3884189	Lever, Rkr Exh Transfer	1	
	(3884187)	Lever, Rocker	1	
2	S-212	Nut, Regular Hexagon	1	
3	168306	Screw, Slotted Set	1	1/2 - 20 x 2 3/64 inch.
4	208084	Rivet	2	
5	3019733	Bushing	1	
	3884192	Lever, Rkr Exh Transfer	3	Exhaust, Cylinders 1,3,5.
6	(3884190)	Lever, Rocker	1	
2	S-212	Nut, Regular Hexagon	1	
3	168306	Screw, Slotted Set	1	1/2 - 20 x 2 3/64 inch.
4	208084	Rivet	2	
5	3019733	Bushing	1	
	3884186	Lever, Rkr Int Transfer	3	Intake, Cylinders 1,3,5.
7	(3884184)	Lever, Rocker	1	
2	S-212	Nut, Regular Hexagon	1	
3	168306	Screw, Slotted Set	1	1/2 - 20 x 2 3/64 inch.
4	208084	Rivet	2	
5	3019733	Bushing	1	
	3884183	Lever, Rkr Int Transfer	3	Intake, Cylinders 2,4,6.
8	(3884181)	Lever, Rocker	1	
2	S-212	Nut, Regular Hexagon	1	
3	168306	Screw, Slotted Set	1	1/2 - 20 x 2 3/64 inch.
4	208084	Rivet	2	
5	3019733	Bushing	1	
	3803166	Shaft, Rocker Lever	2	
9	(3820750)	Shaft, Rocker Lever	1	
10	3019630	Plug, Drive	2	
	3883171	Lever, Injector	6	Injector, Cyl. 1,2,3,4,5,6.
11	(3883089)	Lever, Rocker	1	
2	S-212	Nut, Regular Hexagon	1	
3	168306	Screw, Slotted Set	1	1/2 - 20 x 2 3/64 inch.
4	208084	Rivet	2	
12	3067871	Bushing	1	
13	3033292	Socket, Tappet	1	
14	3892105	Screw, Captive Washer Cap	10	M10 x 1.50 x 100
15	3821846	Screw, Captive Washer Cap	14	M10 x 1.50 x 35
16	3820151	Rod, Push	12	
17	3820152	Rod, Push	6	
18	3020092	Screw, Hexagon Head Cap	8	M14 x 2.00 x 135
19	3035177	Washer, Plain	8	
20	3892789	Support, Rocker Lever	4	
21	3062607	Housing, Rocker Lever	1	
22	3892667	Gasket, Rkr Lever Housing	1	
23	3892787	Support, Rocker Lever	2	
24	3892788	Support, Rocker Lever	2	
25	3070175	Crosshead, Valve	12	