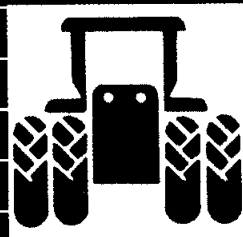
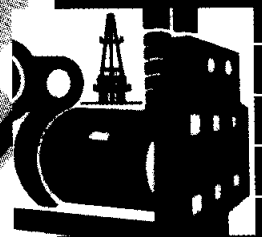
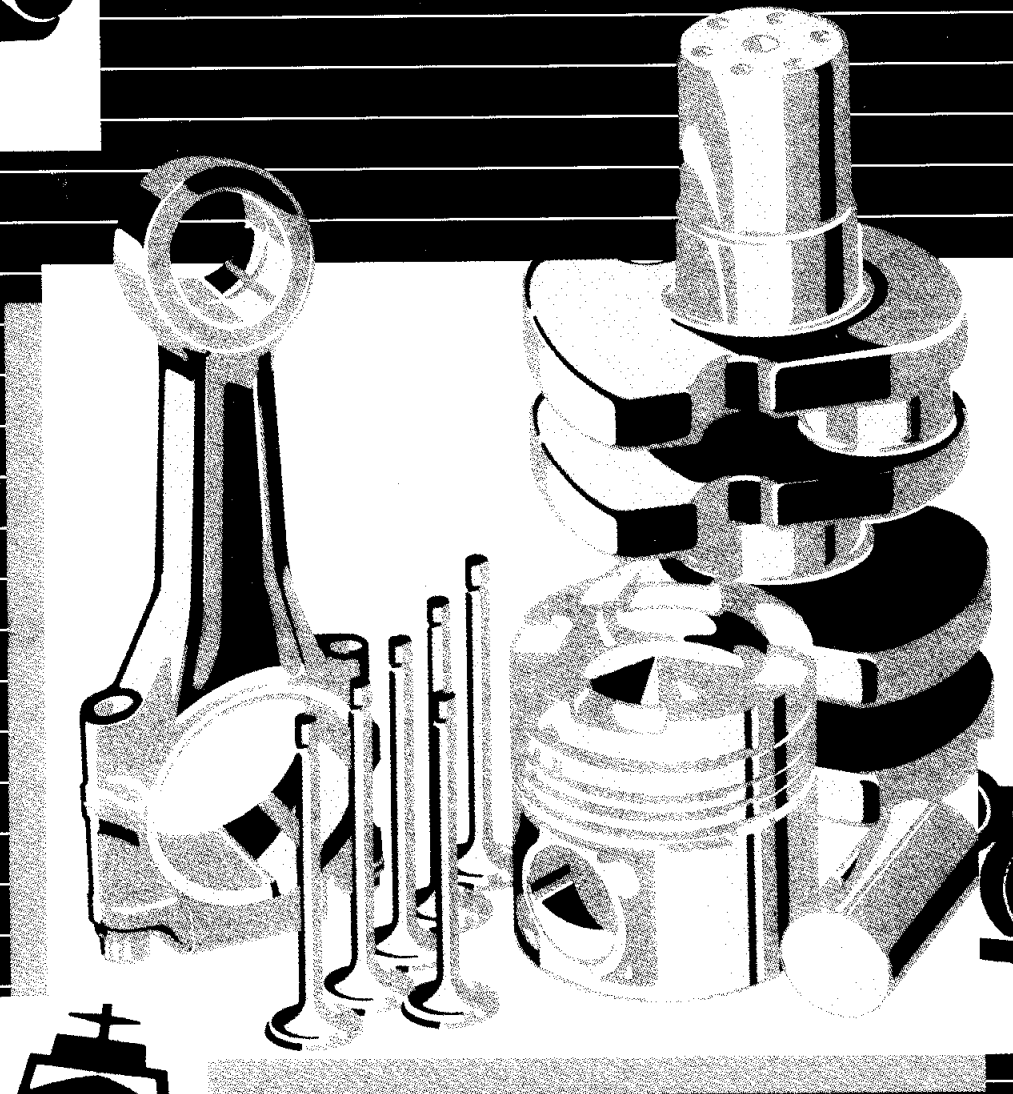




Parts Catalog

KTA50-G3/G8/G9

Generator Drive

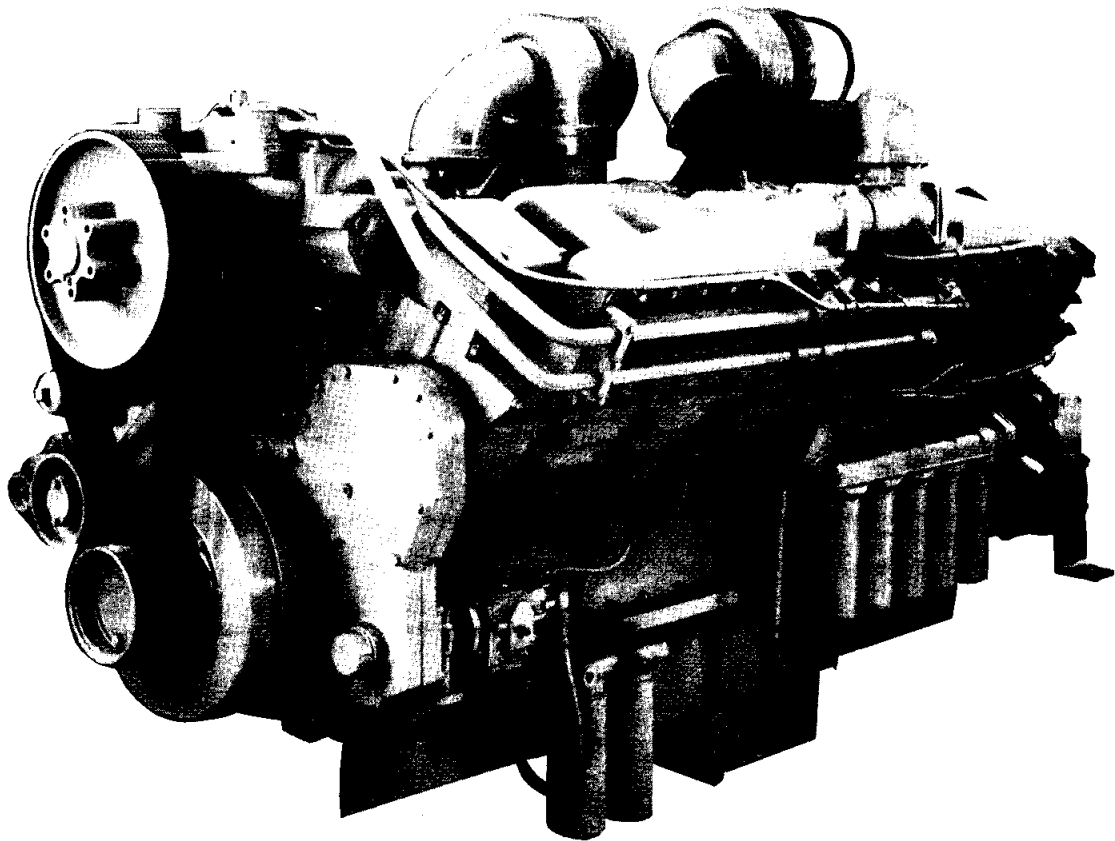




Parts Catalog

KTA50-G3/G8/G9

Generator Drive





Cummins Engine Co., Inc.

New Parts Warranty Heavy Duty

COVERAGE

PRODUCTS WARRANTED

These warranties apply to New Parts marketed by Cummins for its engines (except those for A, B, and C series engines). They apply anywhere in the world where service is available through a Cummins distributor or full service dealer.*

BASE WARRANTY

The Base Warranty covers any failures of parts on or after March 31, 1986, which result, under normal use and service, from defects in workmanship or material (Warrantable Failures). The coverage on cylinder kits designated by Cummins as "Premium Plus" extends two years, 200,000 miles (321,870 kilometers) or 7,200 hours of operation, whichever occurs first, from the date of first installation. The coverage on other parts extends one year, 100,000 miles (160,935 kilometers) or 3,600 hours of operation, whichever occurs first, from the date of first installation.

EXTENDED MAJOR COMPONENTS WARRANTY

The Extended Major Components Warranty covers Warrantable Failures on or after March 31, 1986, of engine cylinder blocks, crankshafts, flangeless NT camshafts** and connecting rods (Covered Parts). Bushing and bearing failures are not included. This coverage begins with the expiration of the Base Warranty and ends three years, 300,000 miles (482,805 kilometers) or 10,800 hours of operation, whichever occurs first, from the date of first installation.

Both the Base Warranty and Extended Major Components Warranty apply to all Owners in the chain of distribution, and coverage continues to all subsequent Owners until the end of the respective periods of coverage.

CUMMINS RESPONSIBILITIES

DURING THE BASE WARRANTY

Cummins will pay for all parts and labor needed to repair the damage to the engine resulting from the Warrantable Failure. All labor costs will be paid in accordance with Cummins published Standard Repair Operation guidelines.

Cummins will pay for the lubricating oil, antifreeze, filter elements, and other maintenance items that are not reusable due to the Warrantable Failure.

Cummins will pay reasonable labor costs for engine removal and reinstallation when necessary to make the warranty repair.

When the parts are installed in a non-automotive engine, Cummins will pay reasonable travel expenses for mechanics to and from the engine site, or the repair dock in the case of a marine engine, including meals, mileage and lodging when it is necessary for mechanics to make on-site warranty repairs.

DURING THE EXTENDED MAJOR COMPONENTS WARRANTY

Cummins will pay for the Covered Part and for any Covered Part damaged by a Warrantable Failure of another Covered Part.

OWNER RESPONSIBILITIES

DURING THE BASE WARRANTY

Before expiration of the warranty, Owner must give notice to a Cummins distributor or full service dealer* of a failure considered to be warrantable and have the repair performed by such facility.

If the part was installed in an automotive engine, the Owner must deliver the engine to the repair location. If installed in a marine engine, Owner is responsible for the cost of towing the boat to a repair dock and for any associated docking and harbor charges.

Owner is responsible for the cost of lubricating oil, antifreeze, filter elements and other maintenance items replaced during warranty repairs except where such items are not reusable due to a Warrantable Failure.

DURING THE EXTENDED MAJOR COMPONENTS WARRANTY

Before expiration of the warranty, Owner must give notice to a Cummins distributor or full service dealer* of a failure considered to be warrantable and deliver the defective and damaged Covered Parts to such facility.

Owner is responsible for the cost of all parts needed for the repair except for the defective Covered Part and for any Covered Part damaged by a Warrantable Failure of another Covered Part.

Owner is responsible for the cost of all labor needed to repair the engine, including the labor to remove and reinstall the engine. When Cummins elects to repair a part instead of replacing it, Owner is not responsible for the labor needed to repair the part.

Owner is responsible for the cost of lubricating oil, antifreeze, filter elements and other maintenance items replaced during the repair.

DURING BOTH WARRANTIES

At the time when the parts are installed, Owner is responsible for the preparation of a written record containing the following: (1) the date of installation of the parts; (2) the engine serial number; (3) the engine miles, hours or kilometers of operation; (4) the parts installed, and (5) the location of the parts in the engine. The purpose of this record is to protect Owner's interests and support any claim for a Warrantable Failure.

Owner is responsible for the operation and maintenance of the engine as specified in Cummins Operation and Maintenance Manuals.

Owner is responsible for communication expenses, meals, lodging and similar costs incurred by Owner as a result of a Warrantable Failure. Owner is responsible for non-engine repairs and for "down time" expenses, cargo damage and all business costs and losses resulting from a Warrantable Failure. CUMMINS IS NOT RESPONSIBLE FOR INCIDENTAL OR CONSEQUENTIAL DAMAGES.

LIMITATIONS

Cummins is not responsible for failures resulting from Owner or Operator abuse or neglect, such as: operation without adequate coolant, fuel or lubricants; overfueling; overspeeding; lack of maintenance of lubricating, cooling or air intake systems; improper storage, starting, warm-up, run-in or shutdown practices. Cummins is also not responsible for failures caused by incorrect fuel, or by water, dirt or other contaminants in the fuel.

Cummins does not warrant parts supplied by Cummins which bear the name of another company. These parts are warranted by their manufacturers and not by Cummins. This category of parts includes, but is not limited to: hydraulic pumps, alternators, starters, fans, air conditioning compressors, clutches, steering pumps, transmissions, torque converters, marine gears, air cleaners, filters and non-Cummins air compressors, power steering pumps, and engine compression brakes.

Parts provided may be new Cummins, Cummins approved rebuilt parts, or repaired parts. Cummins is not responsible for failures resulting from the use of parts not approved by Cummins.

Before a claim for excessive oil consumption will be considered, Owner must submit adequate documentation to show that consumption exceeds Cummins published standards.

This warranty does not apply to parts furnished by Cummins at no charge to the Owner.

INVEST IN THE BEST

Product Identification Information

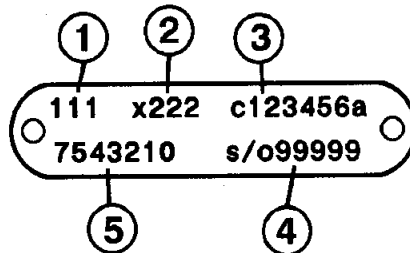
Data plates should be referred for parts identification.

1. ENGINE DATA PLATE

③	①
Engine No.	S.O. No.
Model	Ref. No.
Advertised	Engine C.I.D. Family C.P.L.
Conf. No.	Cert Indent.
Date of mfg.	Warranty start date
Manufactured by Cummins Engine Co.	
	④

1. Shop order number
2. Model designation
3. Engine serial number
4. Control parts list

2. FUEL PUMP DATA PLATE



1. Control parts list number
2. Calibration code
3. Serial number
4. Top level number
5. Fuel pump assembly number

This catalog was compiled by Garry Wilber in Parts Communications.

Customer Service Information

This standard Parts Catalog contains parts information for the following Cummins Engine Model(s):

KTA50-G3
KTA50-G8/G9

D283021DX02
D283022DX02

CPL 2227
CPL 2354, 2355

Certain basic engine components have been matched to give optimum performance to your engine. The part numbers listed in this catalog for these components are for a standard engine configuration. When ordering any of the Control Parts List (CPL) components listed below, please order by part description and engine serial number. Reference to the CPL number stamped on the engine data (name) plate will also help identify the proper service parts for your engine.

Control Parts List (CPL) Components

Aftercooler	Page 132, 162	Piston, engine	Page 137, 173
Camshaft	Page 117, 143	Turbocharger	Page 131, 161, 171
Cylinder Head	Page 115, 141	Exhaust, manifold	Page 191
Injector	Page 119, 145		

USER INFORMATION

- . Parts numbers appearing in () are for identification purposes only and should not be used when ordering service replacement parts.
- . The reference numbers appearing on the art pages is for publication use only.
- . Assembly content is shown by part number indentation.
- . Options are engineered production part groupings, specifically used for compiling engine orders.
- . Option numbers are for reference only and are not sold for service.
- . Use assembly and not option content to determine service parts replacement.

ALWAYS SPECIFY ENGINE MODEL AND SERIAL NUMBER WHEN ORDERING PARTS FROM THIS CATALOG

Engine Model _____ Engine Serial No. _____

MFG Make _____ Model _____ Chassis No. _____

Fuel Pump Assembly No. _____ Injector No. _____

Belt, Fan _____ Belt, Water Pump _____ Belt, Gen. _____

Element, Fuel Filter _____ Full Flow Lub. Filter _____

Air Cleaner _____ By-Pass Lub. Filter _____

Special Equipment

Product Identification Information

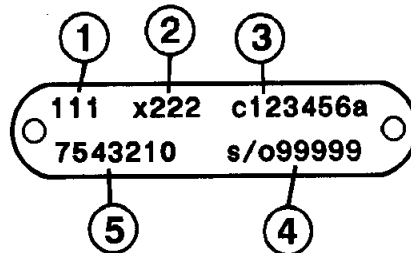
Data plates should be referred for parts identification.

1. ENGINE DATA PLATE

③	Engine No.	S.O. No.	
	Model	Ref. No.	
②	Advertised	Engine Cert	④
	Conf. No.	Indent.	
	Date of mfg.	Warranty start date	
Manufactured by Cummins Engine Co.			

1. Shop order number
2. Model designation
3. Engine serial number
4. Control parts list

2. FUEL PUMP DATA PLATE

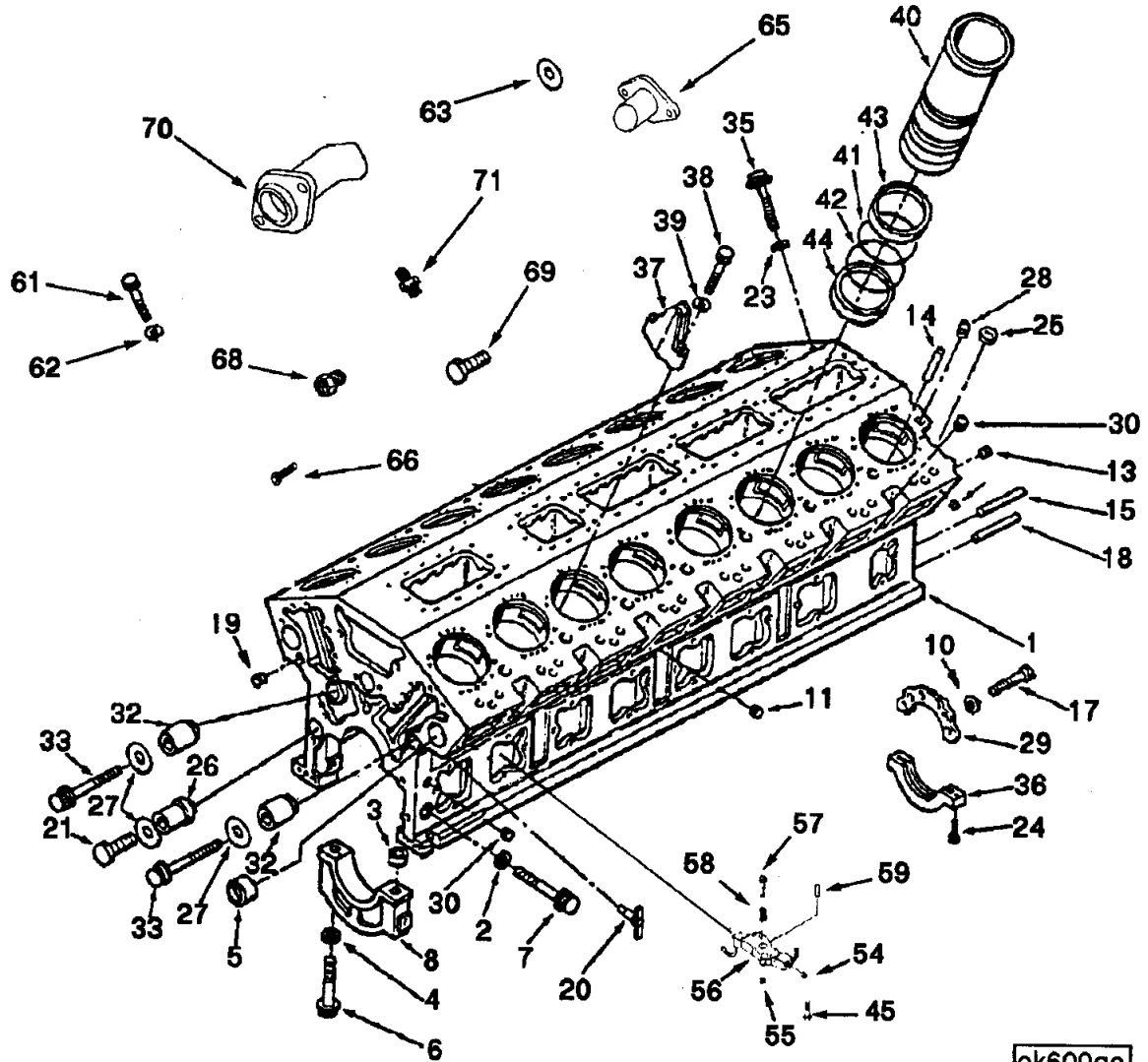


1. Control parts list number
2. Calibration code
3. Serial number
4. Top level number
5. Fuel pump assembly number

This catalog was compiled by Garry Wilber in Parts Communications.

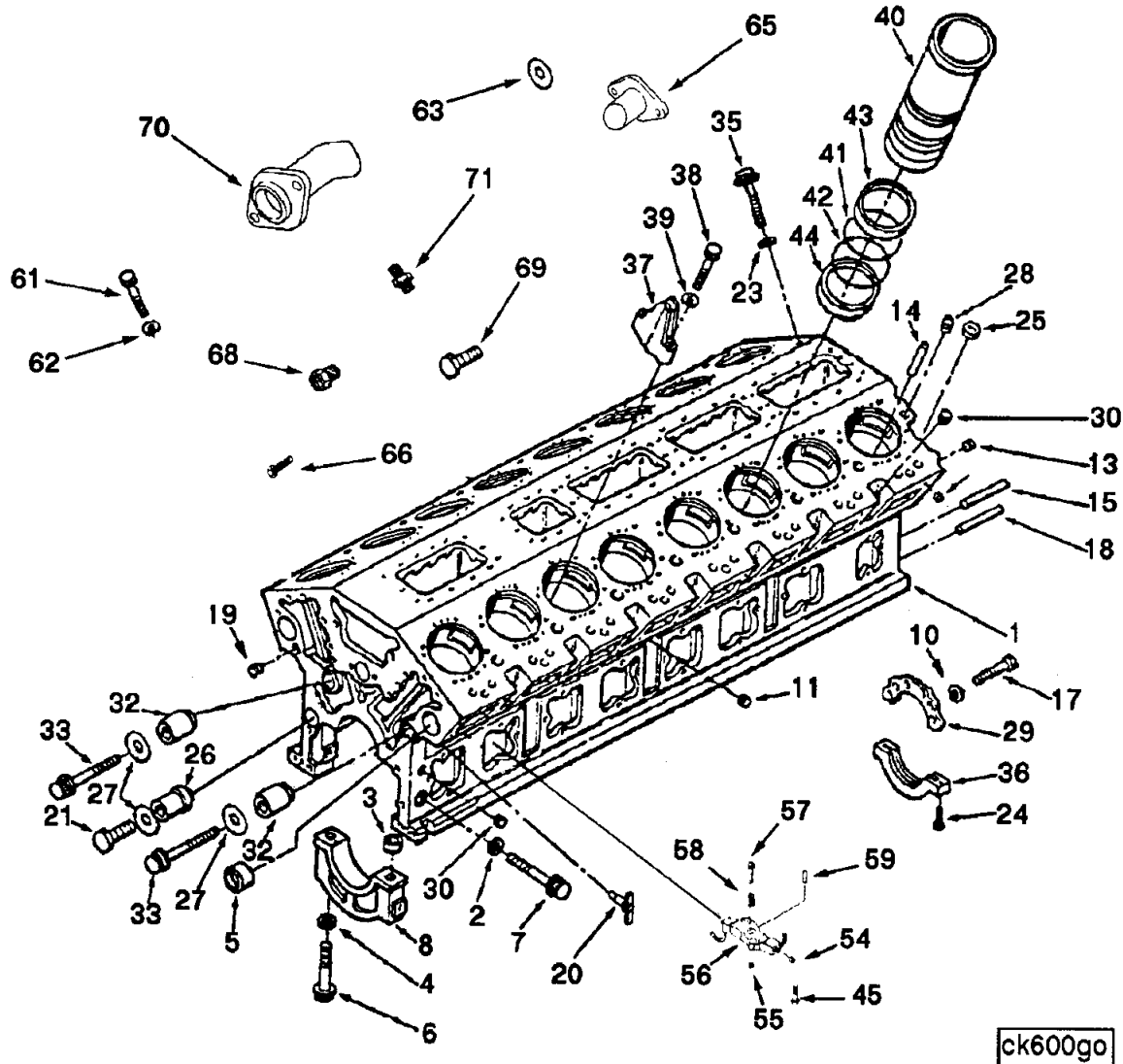
Table of Contents

	Page No.		Page No.
Accessory Drive Covers	88	Lubricating Oil Pump	17
Accessory Drive Pulley	175	Magnetic Pickup	60
Actuator, Etr Fuel Control	75	Magnetic Switch	41
Aftercooler Core	132, 162	Main Bearing Shell	7
Alternator	38	Oil Pan	107, 109
Alternator Mounting	37	Oil Pressure Switch	35
Breather Mounting	100	Oil Transfer Connection	96
Bypass Oil Filter	103, 104	Oversize Head Gasket	113
Cam Follower & Cover	13	Piston, Pin, And Rings	137, 173
Camshaft & Gear - Left	117, 143	Plumbing, Aftercooler	135, 165
Camshaft & Gear - Right	117, 143	Pump, Gear Fuel	76
Connecting Rod	137, 173	Rear Camshaft Cover	8
Connection, Oil Supply	153	Rear Engine Support	176
Connection, Oil Transfer	127	Restriction Indicator	30
Conn, LB Oil Control	155	Rocker Housing	116, 142
Conn, RB Oil Control	157	Rocker Lever & Cover	11
Coolant Temperature Switch	34	Shipping Bracket	22
Corrosion Resistor	181	Starter	177
Cover, Fuel Pump Front	73	Starter Mounting	178
Crankshaft	26	STC Oil Manifold	121, 123, 147
Cummins EFC Governor	61, 63	STC Valve	125, 149
Cummins Electronic Fuel Control Governor	66	STC Valve Mounting	126, 150
Cylinder Block	3, 5	Tappet	120, 146, 168
Cylinder Head	115, 141	Turbo Oil Supply Hose	20
Cylinder Head Mounting	113, 139	Turbocharger	131, 161, 171
Damper, Fuel Pump & MTG.	74	Vibration Damper	33
Engine Barring Drive	21	Water Header	128, 158
Exhaust Elbow	192	Water Inlet Connection	183
Exhaust Manifold	191	Water Outlet Connection	187, 189
Fan Drive Arrangement	43, 45, 47	Water Pump	19
Fill & Breather	99	Water Transfer Tubes	185
Flywheel	84, 87	Option Number Index	A-1
Flywheel Housing	59	Part Number Index	B-1
Front Engine Support	39		
Fuel Block	79		
Fuel Filter	53, 55		
Fuel Filter Plumbing	56		
Fuel Manifold	25, 29		
Fuel Pump	67		
Fuel Pump Support	65		
Fuel Tubing	81		
Fuel Valve	83		
Gear Cover Mounting	48, 49, 51		
Housing, Fuel Pump	69, 71		
Injector	119, 145, 167		
Injector Mounting	14		
Intake Manifold	91, 93		
Lub Oil Pump Tubing	111		
Lubricating Oil Cooler	15		
Lubricating Oil Filter	95		



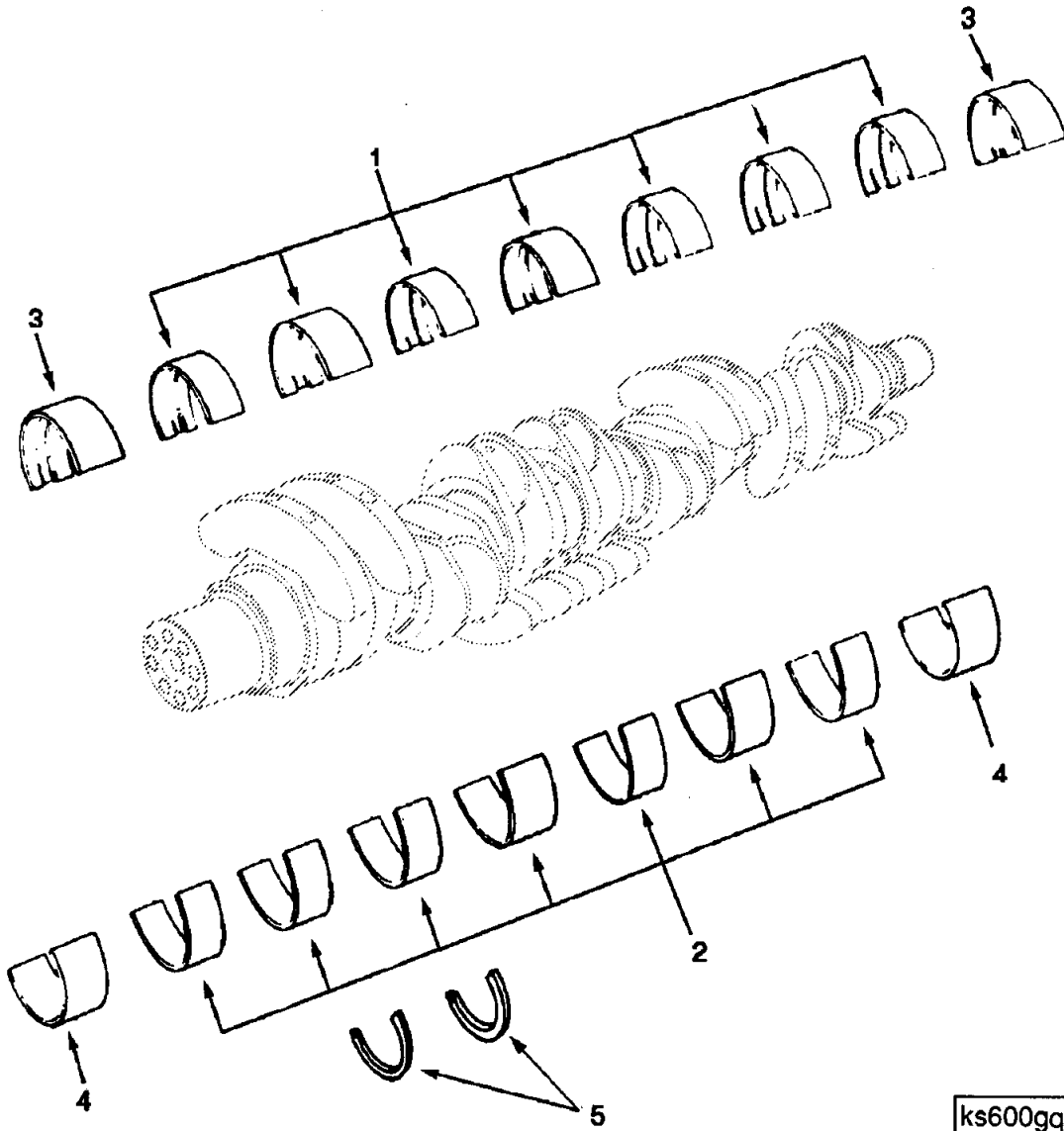
ck600go

Ref No.	Part Number	Part Name	Req	Remarks
		CYLINDER BLOCK OPTION BP6089		Base Parts for single stage KTA50-G3/G6/G7 with non-LTA K2000 technology. Includes: K-50 water pump STC stepped timing control ORS hoses for STC and turbo supply.
		CYLINDER BLOCK OPTION BP6103		Base parts for single stage KTA50-G5/G6 Ta-luft ratings includes: K-50 water pump STC stepped timing control wide camshaft rollers.
	3178803	Block, Cylinder	1	
1	(3178910)	Block, Cylinder	1	
2	139990	Washer, Plain	18	3/4 inch
3	3176857	Dowel, Ring	9	
4	3025485	Washer, Plain	18	
5	205230	Bushing	34	
6	3628452	Screw, Hexagon Head Cap	18	1-14x9.25 inch
7	205584	Screw, Twelve Point Cap	18	3/4 - 10 X 2 1/4 inch
8	206587	Cap, Main Bearing	7	2,3,4,5,6,7,8
8	206588	Cap, Main Bearing	2	1,9
10	S-610	Washer, Lock	6	
11	3628608	Plug, Pipe	4	
13	3628607	Plug, Pipe	1	
14	68445	Pin, Groove	32	
15	70662	Dowel, Pin	2	
17	106069	Screw, Hexagon Head Cap	6	7/16-14x2 inch
18	148582	Dowel, Pin	2	
19	3629168	Plug, Expansion	12	
20	3629497	Draincock	3	
25	206224	Plug, Expansion	21	
28	206742	Plug, Expansion	16	
29	3000138	Support, Bearing	1	
30	3628605	Plug, Pipe	18	
31	3002993	Dowel, Ring	32	
36	3175281	Support, Bearing	1	
66	3176649	Seal, Tamper Proof	16	
68	S-955	Bushing, Reducing Pipe	1	
21	3177443	Screw, Hex Flange Head Cap	1	5/8 - 18 X 4 1/2 inch
23	205059	Washer, Plain	96	
24	205199	Screw, Twelve Point Cap	2	3/8-16x3.5 inch
26	3178450	Shaft, Idler	1	
27	3178457	Washer, Plain	3	5/8 inch
32	3033853	Shaft, Idler	2	
33	3177945	Screw, Hex Flange Head Cap	2	5/8-18x3.75 inch
35	3032633	Screw, Twelve Point Cap	96	3/4 - 16 X 8 inch
37	205684	Bracket, Lifting	4	
38	206028	Screw, Socket Head Cap	4	3/4 - 10 X 2 1/4 inch
39	205059	Washer, Plain	4	3/4 inch
		Continued On Next Page...		



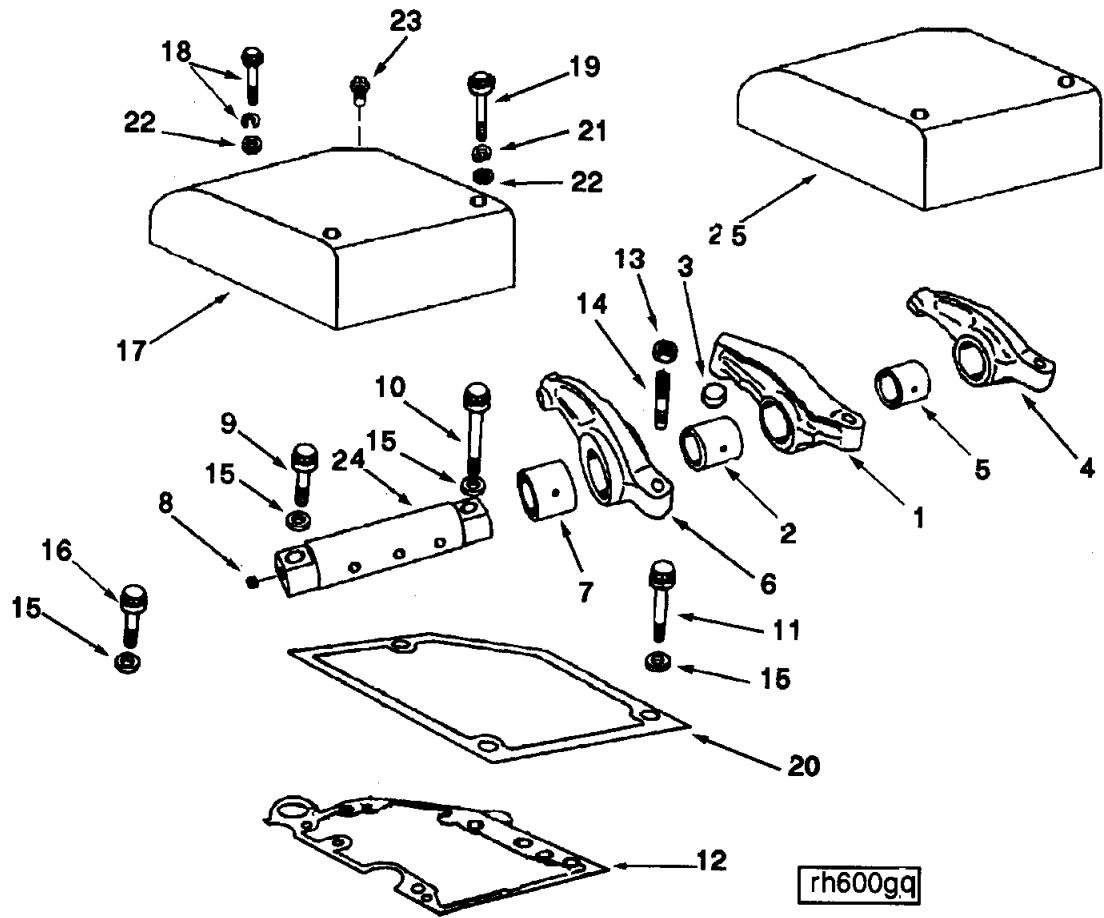
ck600go

Ref No.	Part Number	Part Name	Req	Remarks
		CYLINDER BLOCK		
		OPTION BP6089		
		OPTION BP6103		
61	S-112	Screw, Hexagon Head Cap	12	3/8 - 16 x 1 inch
62	S-604	Washer, Lock	12	3/8 inch
63	3177556	Seal, Rectangular Ring	6	
65	3178464	Plate, Cover	2	
69	S-186	Screw, Hexagon Head Cap	16	5/16 - 24 x 1 inch
70	3178466	Connection, Water Transfer	4	
71	3178534	Nipple, Reducing Hexagon	1	
	3007525	Kit, Liner	16	
40	(3022157)	Liner, Cylinder	1	
41	3014668	Seal, D Ring	1	Bottom
42	3011076	Seal, D Ring	1	Top
44	3081489	Seal, Oil	1	
43	3011884	Insert, Liner	1	
	3019150	Insert, Liner	A/R	.002 Inch O/S
	3021148	Insert, Liner	A/R	.004 Inch O/S
		CYLINDER LINER (O/S)		
	3012611	Kit, Liner	A/R	.010 Inch O/S
	3012612	Kit, Liner	A/R	.020 Inch O/S
	3801268	Kit, Liner	A/R	.030 Inch O/S
	3801269	Kit, Liner	A/R	.040 Inch O/S
		LINER SHIMS		
	205741	Shim	A/R	.007 Inch O/S
	205742	Shim	A/R	.008 Inch O/S
	205743	Shim	A/R	.009 Inch O/S
	205744	Shim	A/R	.020 Inch O/S
	205745	Shim	A/R	.031 Inch O/S
		PISTON COOLING NOZZLE		
45	3178947	Screw, Hexagon Head Cap	16	5/16 - 18 X 1 1/4 inch
	3179664	Valve, Piston Cooling	8	
54	3176552	Seal, Tamper Proof	2	
55	69204-D	Ring, Retaining	1	
56	3630068	Body, Piston Cooling Valve	1	
57	3058423	Plunger, Oil Control Valve	1	
58	3058424	Spring, Compression	1	
59	3179000	Dowel, Pin	2	

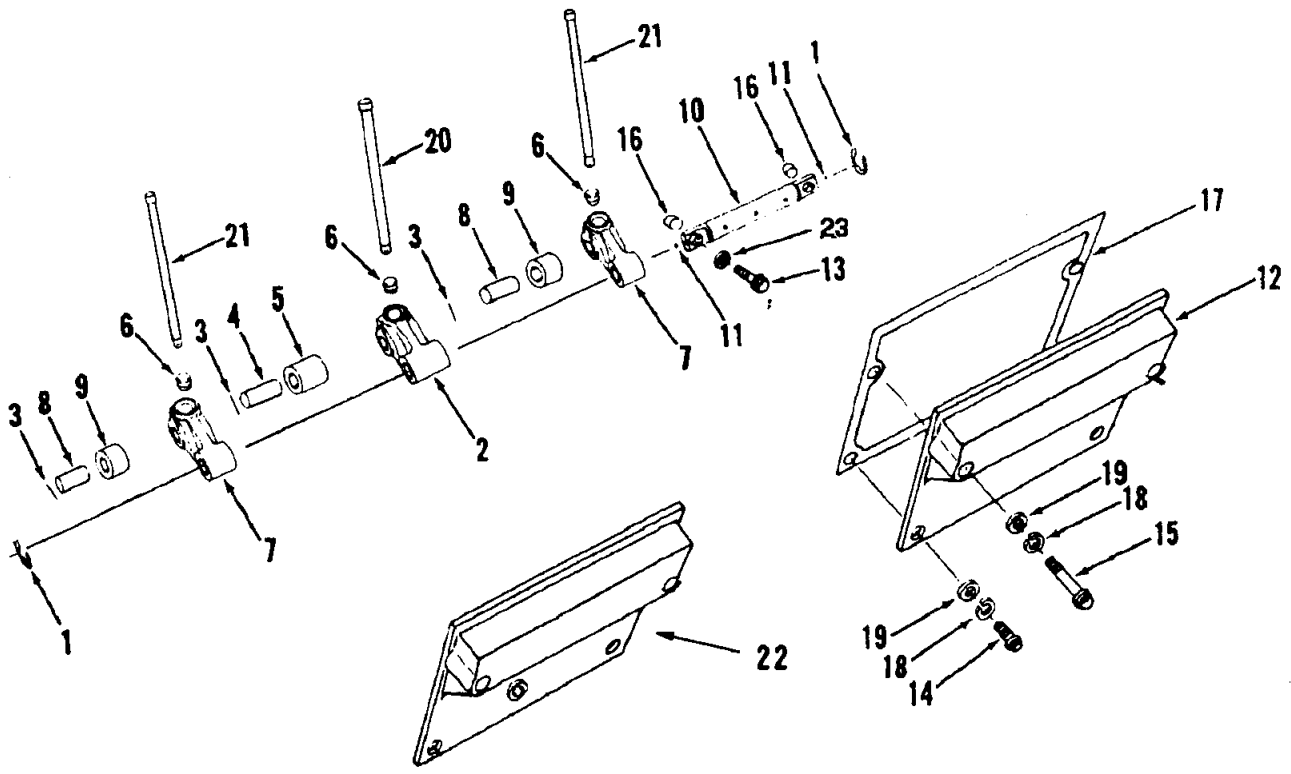


ks600ga

Ref No.	Part Number	Part Name	Req	Remarks
MAIN BEARING SHELL				
OPTION BP6089				
OPTION BP6103				
	3018210	Set, Main Bearing	1	Standard
1	206580	Bearing, Main	7	No.2,3,4,5,6,7,&8, Upper
2	206590	Bearing, Main	7	No.2,3,4,5,6,7,&8, Lower
3	206600	Bearing, Main	2	No.1&9, Upper
4	206610	Bearing, Main	2	No.1&9, Lower
5	3000139	Bearing, Thrust	2	
	3018211	Set, Main Bearing	A/R	.010 Inch O/S
1	206581	Bearing, Main	A/R	No.2,3,4,5,6,7,&8, Upper
2	206591	Bearing, Main	A/R	No.2,3,4,5,6,7,&8, Lower
3	206601	Bearing, Main	A/R	No.1&9, Upper
4	206611	Bearing, Main	A/R	No.1&9, Lower
5	3001708	Bearing, Thrust	A/R	.010 Inch O/S
	3018212	Set, Main Bearing	A/R	.020 Inch O/S
1	206582	Bearing, Main	A/R	No.2,3,4,5,6,7,&8, Upper
2	206592	Bearing, Main	A/R	No.2,3,4,5,6,7,&8, Lower
3	206602	Bearing, Main	A/R	No.1&9, Upper
4	206612	Bearing, Main	A/R	No.1&9, Lower
5	3001709	Bearing, Thrust	A/R	.020 Inch O/S
	3018213	Set, Main Bearing	A/R	.030 Inch O/S
1	206583	Bearing, Main	A/R	No.2,3,4,5,6,7,&8, Upper
2	206593	Bearing, Main	A/R	No.2,3,4,5,6,7,&8, Lower
3	206603	Bearing, Main	A/R	No.1&9, Upper
4	206613	Bearing, Main	A/R	No.1&9, Lower
5	3034075	Bearing, Thrust	A/R	.030 Inch O/S
	3018214	Set, Main Bearing	A/R	.040 Inch O/S
1	206584	Bearing, Main	A/R	No.2,3,4,5,6,7,&8, Upper
2	206594	Bearing, Main	A/R	No.2,3,4,5,6,7,&8, Lower
3	206604	Bearing, Main	A/R	No.1&9, Upper
4	206614	Bearing, Main	A/R	No.1&9, Lower
5	3034076	Bearing, Thrust	A/R	.040 Inch O/S

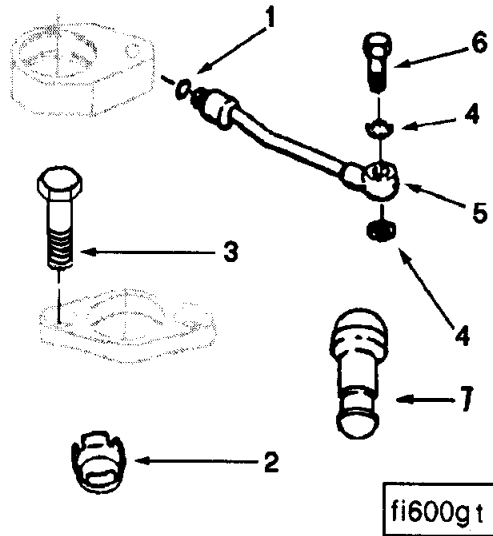


Ref No.	Part Number	Part Name	Req	Remarks
		ROCKER LEVER & COVER		
		OPTION BP6089		
		OPTION BP6103		
1	3053478	Lever, Rocker	16	
2	207226	Bushing	1	
3	194037	Socket, Rocker Lever	1	
	(3049437)	Lever, Rocker	1	
4	3053476	Lever, Rocker	16	
5	207344	Bushing	1	
	208084	Rivet	1	
	(3049438)	Lever, Rocker	1	
6	3053479	Lever, Rocker	16	
7	207344	Bushing	1	
	(3049432)	Lever, Rocker	1	
24	3176772	Shaft, Rocker Lever	16	
8	203933	Plug, Expansion	1	
9	205393	Screw, Twelve Point Cap	16	1/2 - 13 X 2 inch
10	205394	Screw, Twelve Point Cap	16	1/2 - 13 X 4 1/2 inch
11	108602	Screw, Hexagon Head Cap	80	1/2 - 13 x 3 3/4 inch
12	3630839	Gasket, Rkr Lever Housing	16	
13	S-212	Nut, Regular Hexagon	48	1/2 - 20 UNF
14	168306	Screw, Slotted Set	48	1/2 - 20 x 2 inch
15	205128	Washer, Plain	128	
16	S-125	Screw, Hexagon Head Cap	16	1/2 - 13 X 2 inch
17	3038938	Cover, Rocker Lever	1	
18	3628196	Screw, Hexagon Head Cap	16	3/8 - 16 X 2 inch
19	3628194	Screw, Hexagon Head Cap	32	3/8 - 16 X 4 1/2 inch
20	3629140	Gasket, Rocker Lever Cover	16	
21	S-604	Washer, Lock	48	3/8 inch
22	S-602	Washer, Plain	48	3/8 inch
23	3628604	Plug, Pipe	1	
25	3010247	Cover, Valve	15	

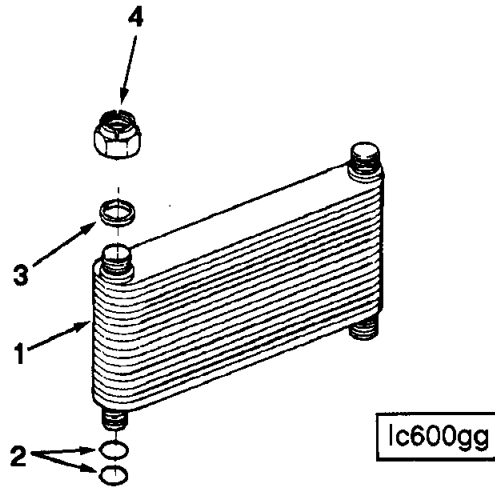


cm800gb

Ref No.	Part Number	Part Name	Req	Remarks
CAM FOLLOWER & COVER				
OPTION BP6089				
OPTION BP6103				
1	205439	Ring, Retaining	32	
2	3039163	Lever, Cam Follower	16	Injector
3	205438	Lockwire, Cam Roller Pin	1	
4	205068	Pin, Cam Follower Roller	1	
5	3016825	Roller, Cam Follower	1	
6	213559	Socket, Cam Follower	1	
7	3039164	Lever, Cam Follower	32	Intake and Exhaust
	(205069)	Lever, Cam Follower	1	
3	205438	Lockwire, Cam Roller Pin	1	
6	213559	Socket, Cam Follower	1	
8	205071	Pin, Cam Follower Roller	1	
9	3016826	Roller, Cam Follower	1	
10	AR10626	Shaft, Cam Follower	16	
11	205227	Plug, Expansion	32	
12	3628755	Cover, Camshaft	15	
22	3628756	Cover, Camshaft	1	This cover is to be mounted to the left side of the oil control valve when part no. 3175318, hose, is used for HVT oil drain. Mounted to the right side of oil control valve when HVT oil drain tube is used.
MOUNTING PARTS				
13	3177760	Screw, Hexagon Head Cap	32	3/8 - 16 X 2 1/2 inch
14	S-103-D	Screw, Hexagon Head Cap	32	3/8 - 16 X 1 1/4 inch
15	S-126	Screw, Hexagon Head Cap	32	3/8 - 16 X 2 1/2 inch
16	3002993	Dowel, Ring	32	
17	3040721	Gasket, Cam Fol Housing	16	
18	S-604	Washer, Lock	58	3/8 inch
19	127362	Washer, Plain	58	
23	127362	Washer, Plain	32	3/8 inch
PUSH RODS				
20	3017961	Rod, Push	16	
21	3057139	Rod, Push	32	



Ref No.	Part Number	Part Name	Req	Remarks
		INJECTOR MOUNTING		
		OPTION BP6089		
		OPTION BP6103		
1	131026	Seal, O Ring	16	
2	207244	Seal, Injector	16	
	3001658	Seal, Injector	A/R	.010 Inch O/S
	3001659	Seal, Injector	A/R	.020 Inch O/S
	3001660	Seal, Injector	A/R	.030 Inch O/S
3	3070962	Screw, Hexagon Head Cap	32	5/16 - 18 x 1 1/4 inch
4	3023095	Washer, Sealing	32	
5	3627044	Connection, Oil Transfer	16	
6	3179021	Screw, Banjo Connector	16	1/2 - 20 x 1 inch
7	3052233	Link, Injector Plunger	16	



Ref No.	Part Number	Part Name	Req	Remarks
		LUBRICATING OIL COOLER		
		OPTION BP6089		
		OPTION BP6103		
1	3627295	Core, Cooler	4	
2	212161	Seal, O Ring	16	
3	3630969	Gasket, Lub Oil Clr Cover	8	
4	3002126	Nut, Lock	8	