



## Parts Catalog

### KT19

VME  
L270  
L270B

**THE FOLLOWING FILTERS CAN BE PURCHASED THRU VME PARTS NORTH AMERICA:**

<u>FILTER</u>	<u>PART NUMBER</u>
FUEL	12003653
LUBE	12000200
LUBE-BYPASS	11996228
WATER-FOR FLUSHING	12967020
WATER-FOR SERVICING	12968028

(

(

(

(

(

(

(



# Cummins Engine Co., Inc.

## New Parts Warranty Heavy Duty

### COVERAGE

#### PRODUCTS WARRANTED

These warranties apply to New Parts marketed by Cummins for its engines (except those for A, B, and C series engines). They apply anywhere in the world where service is available through a Cummins distributor or full service dealer.\*

#### BASE WARRANTY

The Base Warranty covers any failures of parts on or after March 31, 1986, which result, under normal use and service, from defects in workmanship or material (Warrantable Failures). The coverage on cylinder kits designated by Cummins as "Premium Plus" extends two years, 200,000 miles (321,870 kilometers) or 7,200 hours of operation, whichever occurs first, from the date of first installation. The coverage on other parts extends one year, 100,000 miles (160,935 kilometers) or 3,600 hours of operation, whichever occurs first, from the date of first installation.

#### EXTENDED MAJOR COMPONENTS WARRANTY

The Extended Major Components Warranty covers Warrantable Failures on or after March 31, 1986, of engine cylinder blocks, crankshafts, flangeless NT camshafts\*\* and connecting rods (Covered Parts). Bushing and bearing failures are not included. This coverage begins with the expiration of the Base Warranty and ends three years, 300,000 miles (482,805 kilometers) or 10,800 hours of operation, whichever occurs first, from the date of first installation.

**Both the Base Warranty and Extended Major Components Warranty apply to all Owners in the chain of distribution, and coverage continues to all subsequent Owners until the end of the respective periods of coverage.**

#### CUMMINS RESPONSIBILITIES

##### DURING THE BASE WARRANTY

Cummins will pay for all parts and labor needed to repair the damage to the engine resulting from the Warrantable Failure. All labor costs will be paid in accordance with Cummins published Standard Repair Operation guidelines.

Cummins will pay for the lubricating oil, antifreeze, filter elements, and other maintenance items that are not reusable due to the Warrantable Failure.

Cummins will pay reasonable labor costs for engine removal and reinstallation when necessary to make the warranty repair.

When the parts are installed in a non-automotive engine, Cummins will pay reasonable travel expenses for mechanics to and from the engine site, or the repair dock in the case of a marine engine, including meals, mileage and lodging when it is necessary for mechanics to make on-site warranty repairs.

##### DURING THE EXTENDED MAJOR COMPONENTS WARRANTY

Cummins will pay for the Covered Part and for any Covered Part damaged by a Warrantable Failure of another Covered Part.

#### OWNER RESPONSIBILITIES

##### DURING THE BASE WARRANTY

Before expiration of the warranty, Owner must give notice to a Cummins distributor or full service dealer\* of a failure considered to be warrantable and have the repair performed by such facility.

If the part was installed in an automotive engine, the Owner must deliver the engine to the repair location. If installed in a marine engine, Owner is responsible for the cost of towing the boat to a repair dock and for any associated docking and harbor charges.

Owner is responsible for the cost of lubricating oil, antifreeze, filter elements and other maintenance items replaced during warranty repairs except where such items are not reusable due to a Warrantable Failure.

##### DURING THE EXTENDED MAJOR COMPONENTS WARRANTY

Before expiration of the warranty, Owner must give notice to a Cummins distributor or full service dealer\* of a failure considered to be warrantable and deliver the defective and damaged Covered Parts to such facility.

Owner is responsible for the cost of all parts needed for the repair except for the defective Covered Part and for any Covered Part damaged by a Warrantable Failure of another Covered Part.

Owner is responsible for the cost of all labor needed to repair the engine, including the labor to remove and reinstall the engine. When Cummins elects to repair a part instead of replacing it, Owner is not responsible for the labor needed to repair the part.

Owner is responsible for the cost of lubricating oil, antifreeze, filter elements and other maintenance items replaced during the repair.

##### DURING BOTH WARRANTIES

At the time when the parts are installed, Owner is responsible for the preparation of a written record containing the following: (1) the date of installation of the parts; (2) the engine serial number; (3) the engine miles, hours or kilometers of operation; (4) the parts installed, and (5) the location of the parts in the engine. The purpose of this record is to protect Owner's interests and support any claim for a Warrantable Failure.

Owner is responsible for the operation and maintenance of the engine as specified in Cummins Operation and Maintenance Manuals.

Owner is responsible for communication expenses, meals, lodging and similar costs incurred by Owner as a result of a Warrantable Failure. Owner is responsible for non-engine repairs and for "down time" expenses, cargo damage and all business costs and losses resulting from a Warrantable Failure. CUMMINS IS NOT RESPONSIBLE FOR INCIDENTAL OR CONSEQUENTIAL DAMAGES.

#### LIMITATIONS

Cummins is not responsible for failures resulting from Owner or Operator abuse or neglect, such as: operation without adequate coolant, fuel or lubricants; overfueling; overspeeding; lack of maintenance of lubricating, cooling or air intake systems; improper storage, starting, warm-up, run-in or shutdown practices. Cummins is also not responsible for failures caused by incorrect fuel, or by water, dirt or other contaminants in the fuel.

Cummins does not warrant parts supplied by Cummins which bear the name of another company. These parts are warranted by their manufacturers and not by Cummins. This category of parts includes, but is not limited to: hydraulic pumps, alternators, starters, fans, air conditioning compressors, clutches, steering pumps, transmissions, torque converters, marine gears, air cleaners, filters and non-Cummins air compressors, power steering pumps, and engine compression brakes.

Parts provided may be new Cummins, Cummins approved rebuilt parts, or repaired parts. Cummins is not responsible for failures resulting from the use of parts not approved by Cummins.

Before a claim for excessive oil consumption will be considered, Owner must submit adequate documentation to show that consumption exceeds Cummins published standards.

This warranty does not apply to parts furnished by Cummins at no charge to the Owner.

**INVEST IN THE BEST**

## Product Identification Information

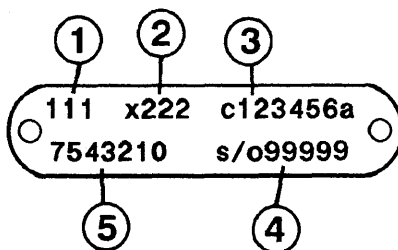
Data plates should be referred for parts identification.

### 1. ENGINE DATA PLATE

③	Engine No.	S.O. No.	
	Model	Ref. No.	
②	Advertised	Engine Cert	④
	Conf. No.	Indent.	
	Date of mfg.	Warranty start date	
Manufactured by Cummins Engine Co.			

1. Shop order number
2. Model designation
3. Engine serial number
4. Control parts list

### 2. FUEL PUMP DATA PLATE



1. Control parts list number
2. Calibration code
3. Serial number
4. Top level number
5. Fuel pump assembly number

**This catalog was compiled by Garry Wilber in Parts Communications.**

## Customer Service Information

This standard Parts Catalog contains parts information for the following Cummins Engine Model(s):

KT19C

D192027CX02

CPL 444

S.O. 68887

Certain basic engine components have been matched to give optimum performance to your engine. The part numbers listed in this catalog for these components are for a standard engine configuration. When ordering any of the Control Parts List (CPL) components listed below, please order by part description and engine serial number. Reference to the CPL number stamped on the engine data (name) plate will also help identify the proper service parts for your engine.

### Control Parts List (CPL) Components

Camshaft  
Cylinder Head  
Injector

Page 61  
Page 69  
Page 63

Piston, engine  
Turbocharger  
Exhaust, manifold

Page 60  
Page 65  
Page 75

### USER INFORMATION

- . Parts numbers appearing in ( ) are for identification purposes only and should not be used when ordering service replacement parts.
- . The reference numbers appearing on the art pages is for publication use only.
- . Assembly content is shown by part number indentation.
- . Options are engineered production part groupings, specifically used for compiling engine orders.
- . Option numbers are for reference only and are not sold for service.
- . Use assembly and not option content to determine service parts replacement.

### ALWAYS SPECIFY ENGINE MODEL AND SERIAL NUMBER WHEN ORDERING PARTS FROM THIS CATALOG

Engine Model \_\_\_\_\_ Engine Serial No. \_\_\_\_\_

MFG Make \_\_\_\_\_ Model \_\_\_\_\_ Chassis No. \_\_\_\_\_

Fuel Pump Assembly No. \_\_\_\_\_ Injector No. \_\_\_\_\_

Belt, Fan \_\_\_\_\_ Belt, Water Pump \_\_\_\_\_ Belt, Gen. \_\_\_\_\_

Element, Fuel Filter \_\_\_\_\_ Full Flow Lub. Filter \_\_\_\_\_

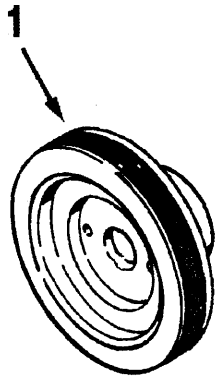
Air Cleaner \_\_\_\_\_ By-Pass Lub. Filter \_\_\_\_\_

Special Equipment  
\_\_\_\_\_  
\_\_\_\_\_  
\_\_\_\_\_



## Table of Contents

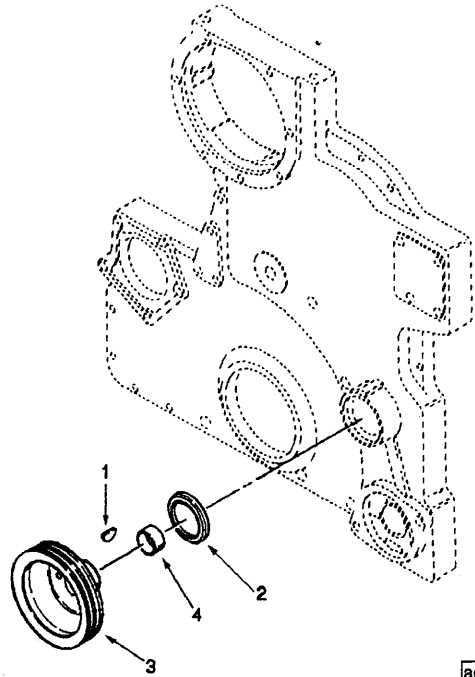
	Page No.		Page No.
Accessory Drive .....	3	Starter Mounting .....	71
Accessory Drive Pulley .....	2	Throttle Lever .....	81
Alternator Mounting .....	25	Turbocharger .....	65
Breather Location .....	21	Turbocharger Mounting .....	76
Cam Follower .....	15	Vibration Damper .....	22
Camshaft And Gear .....	61	Water Inlet Connection .....	83
Camshaft Idler Gear .....	8	Water Manifold .....	85
Corrosion Resistor .....	82	Water Outlet Connection .....	86
Cover Plate .....	47	Water Pump .....	89
Crankshaft & Main Bearings .....	11	Option Number Index .....	A-1
Cylinder Block .....	5, 7	Part Number Index .....	B-1
Cylinder Head .....	69		
Cylinder Head Mounting .....	67		
Dipstick .....	54		
Dipstick Tube .....	52		
Exhaust Elbow .....	90		
Exhaust Manifold/turbo Mtg .....	75		
Fan Drive Arrangement .....	30		
Flywheel .....	44		
Flywheel Housing .....	35		
Front Engine Support .....	27		
Fuel Filter .....	33		
Fuel Pump .....	39		
Fuel Pump Drive .....	38		
Fuel Shutoff Valve .....	43		
Fuel Tubing .....	41		
Gear Cover Mounting .....	29		
Hand Hole Covers .....	53		
Head Gasket Set - Single .....	92		
Injector .....	63		
Injector Mounting .....	18		
Intake Manifold .....	48, 49		
Intake Manifold Mounting .....	50		
Lifting Arrangement .....	70		
Lubricating Oil Pump .....	17		
Mag Pickup Location Plug .....	36		
Mounting .....	61		
Oil Cooler .....	79		
Oil Cooler Connection .....	80		
Oil Fill Location .....	37		
Oil Filter .....	51		
Oil Pan .....	57, 59		
Oversize Head Gasket .....	67		
Piston & Connecting Rod .....	60		
Pump Idler .....	8		
Rocker Levers .....	13		
Starter .....	72		



ad400gh

Ref No.	Part Number	Part Name	Req	Remarks
1	3002331	<p>ACCESSORY DRIVE PULLEY OPTION AD4007</p> <p>Pulley, Alternator</p>	1	<p>Pulley to drive alternator. Right side of engine. For use with the one piece aluminum gear cover.</p>





ad400gc

Ref No.	Part Number	Part Name	Req	Remarks
<b>ACCESSORY DRIVE OPTION AD4014</b>				
1	S-316	Key, Plain Woodruff	1	Accessory drive with two groove pulley to drive freon compressor. Fuel pump side of engine. Use with CF4004.
2	3200287	Seal, Keyway	1	
3	3014695	Pulley, Accessory Drive	1	
4	(3011826) 190397	Pulley, Accessory Drive Sleeve, Wear	1	

