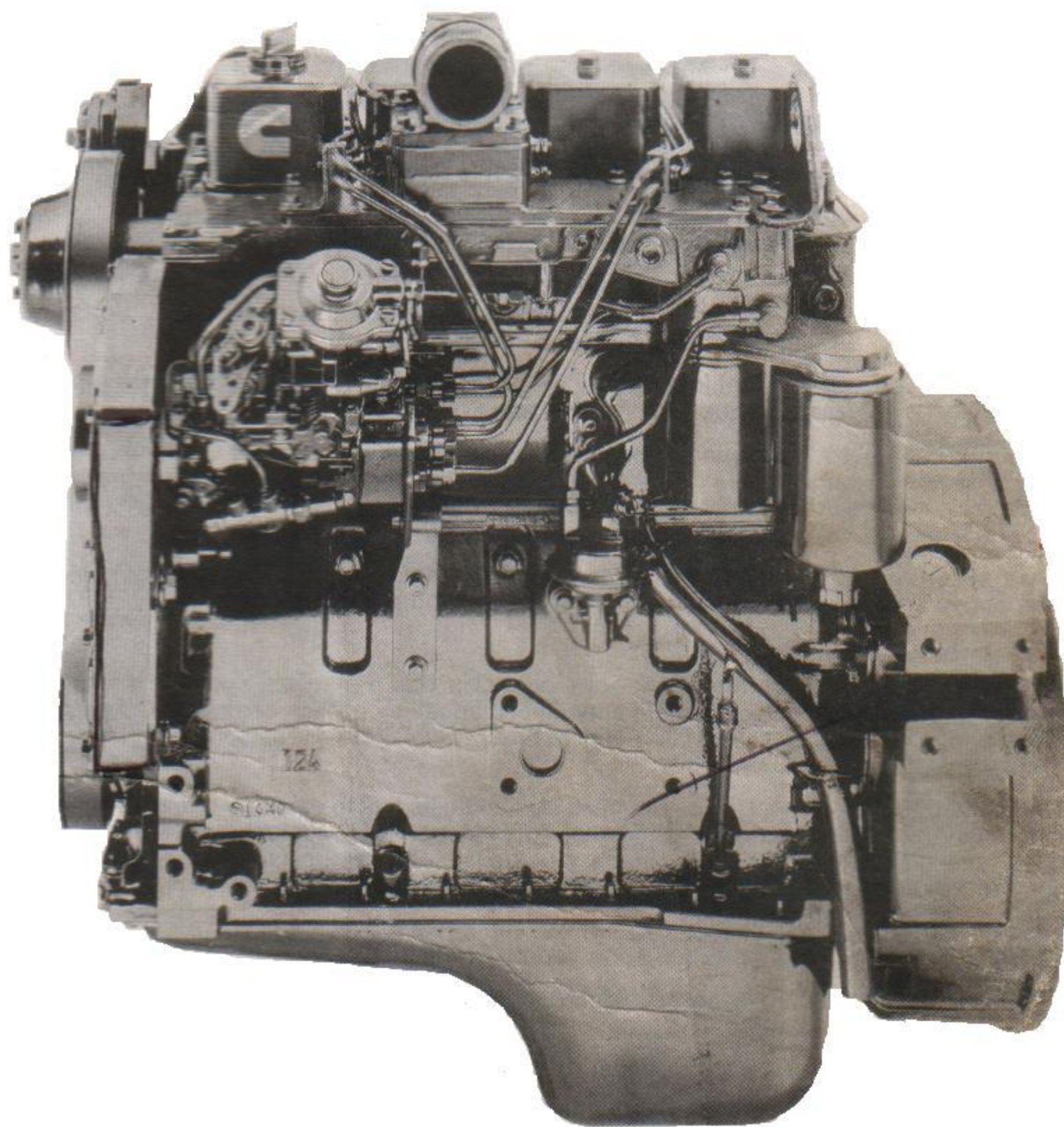




# Parts Catalog

## 4BT3.9

Charge Air Cooled  
Automotive





## Cummins Engine Co., Inc.

### New Parts Warranty Midrange

#### COVERAGE

##### PRODUCTS WARRANTED

This warranty applies to New Parts marketed by Cummins for its A, B, and C Series engines. It applies anywhere in the world where service is available through a Cummins distributor or A, B, and C Series dealer.\*

##### COVERAGE

This warranty covers any failures of parts on or after December 1, 1986, which result, under normal use and service, from defects in workmanship or material (Warrantable Failures). The coverage extends six months from the date of first installation.

This warranty continues to all subsequent Owners until the end of the period of coverage.

##### CUMMINS RESPONSIBILITIES

Cummins will pay for all parts and labor needed to repair the damage to the engine resulting from the Warrantable Failure. All labor costs will be paid in accordance with Cummins published Standard Repair Time guidelines.

Cummins will pay for the lubricating oil, antifreeze, filter elements, and other maintenance items that are not reusable due to the Warrantable Failure.

Cummins will pay reasonable labor costs for engine removal and reinstallation when necessary to make the warranty repair.

##### OWNER RESPONSIBILITIES

At the time when the parts are installed, Owner is responsible for the preparation of a written record containing the following: (1) the date of installation of the parts; (2) the engine serial number; (3) the engine miles, hours or kilometers of operation; (4) the parts installed, and (5) the location of the parts in the engine. The purpose of this record is to protect Owner's interests and support any claim for a Warrantable Failure.

Owner is responsible for the operation and maintenance of the engine as specified in Cummins Operation and Maintenance Manuals.

39125 expiration of the warranty, Owner must give notice to a Cummins distributor or A, B, and C Series dealer\* of a failure  
39133 required to be warrantable and deliver the engine to such facility for repair.

39141 Owner is responsible for the cost of lubricating oil, antifreeze, filter elements and other maintenance items replaced during warranty  
39142 repairs except where such items are not reusable due to a Warrantable Failure.

39143 Owner is responsible for communication expenses, meals, lodging and similar costs incurred by Owner as a result of a Warrantable  
39144 failure. Owner is responsible for non-engine repairs and for "downtime" expenses, cargo damage and all business costs and  
39145 losses resulting from a Warrantable Failure. **CUMMINS IS NOT RESPONSIBLE FOR INCIDENTAL OR CONSEQUENTIAL DAMAGES.**

(In the United States, some states do not allow the exclusion or limitation of incidental or consequential damages relating to Consumer Products, so the above limitation or exclusion may not apply to you.)

##### LIMITATIONS

Cummins is not responsible for failures resulting from Owner or Operator abuse or neglect, such as: operation without adequate coolant or lubricants; overfueling; overspeeding; lack of maintenance of lubricating, cooling or air intake systems; improper storage, starting, warm-up, run-in or shutdown practices. Cummins is also not responsible for failures caused by incorrect fuel, or by water, dirt or other contaminants in the fuel.

Except for fuel pumps, Cummins does not warrant parts supplied by Cummins which bear the name of another company. These parts are warranted by their manufacturers and not by Cummins. This category of parts includes, but is not limited to: hydraulic pumps, alternators, starters, fans, air conditioning compressors, clutches, filters, transmissions, torque converters, marine gears, air cleaners and non-Cummins air compressors, engine compression brakes, and steering pumps.

Parts used in warranty repairs may be new Cummins, Cummins approved rebuilt parts, or repaired parts. Cummins is not responsible for failures resulting from the use of parts not approved by Cummins.

Before a claim for excessive oil consumption will be considered, Owner must submit adequate documentation to show that consumption exceeds Cummins published standards.

This warranty does not apply to parts furnished by Cummins at no charge to the Owner.


**THIS WARRANTY IS THE SOLE WARRANTY MADE BY CUMMINS IN REGARD TO THESE PARTS. CUMMINS MAKES NO OTHER WARRANTIES, EXPRESS OR IMPLIED, OR OF MERCHANTABILITY OR FITNESS FOR A PARTICULAR PURPOSE.**

**INVEST IN THE BEST**

## Product Identification Information

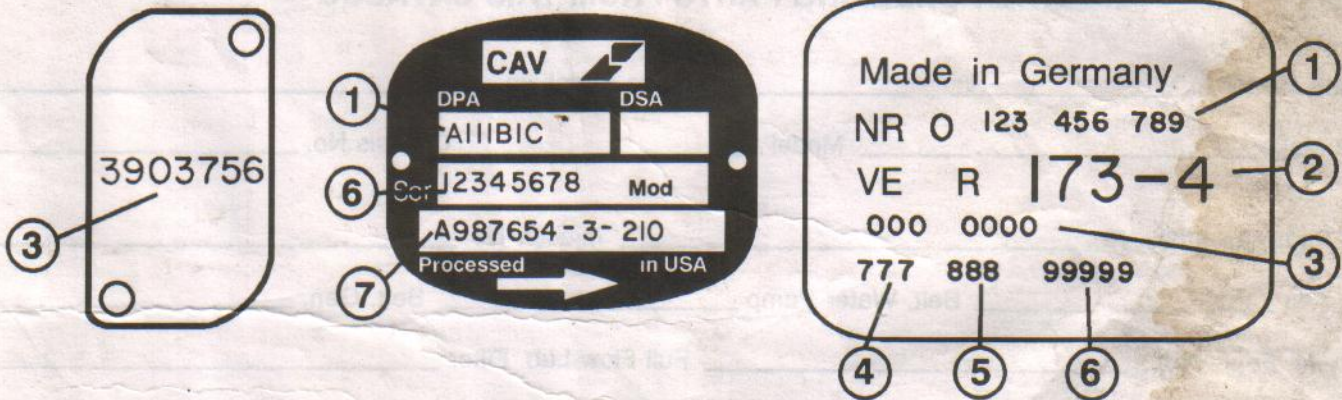
Data plates should be referred for parts identification.

### 1. ENGINE DATA PLATE

 <b>Cummins Engine Company, Inc.</b> Columbus, Indiana 47202-3005 Made in U.S.A. 3920701	Engine Cert. I.D. Certificat d'Identite'	C.I.D./L. Pouce Cube/L.	Family Famille	CPL	Model Modele	FEL	EPA	CARB
	WARNING: Injury may result and warranty is voided if fuel rate rpm or altitudes exceed published maximum values for this model and application. AVERTISSEMENT: Danger de blessures et d'annulation de la garantie si de'bit de combustible tr/min ou altitude de'passent les valeurs maximum annonce'es pour ce modele et son utilisation.					Injector P/N Injecteur P/N	NDX	
Timing—T.D.C. Colage—P.M.H.					Engine No. Moteur No.	PM		
Valve lash cold Jeux Soup. a Froid			Int. Adm.	Exh. Ech.	Ref. No.			
Firing Order Order d'Allumage					Fuel rate at adv. HP De'bit combust. a puissance indiquee			$\frac{\text{mm}^3}{\text{stroke}}$
Date of Mfg. Date of Fabrication	Idle Speed (rpm) Vitesse Rotenti	E.C.S.	Advertised HP Puiss. Indiquee (ch)		at a			rpm

1. Shop order number
2. Model designation
3. Engine serial number
4. Control parts list

### 2. FUEL PUMP DATA PLATE



1. Supplier part number
2. Supplier alpha-numerica designation
3. Cummins part number
4. Factory code
5. Manufacturing date code
6. Serial number of pump
7. Pump setting code

This catalog was compiled by Rita Wheeler in Parts Communications.

## Customer Service Information

This standard Parts Catalog contains parts information for the following Cummins Engine Model(s):

4BTA

D383017BX02

CPL 986, 1260

Certain basic engine components have been matched to give optimum performance to your engine. The part numbers listed in this catalog for these components are for a standard engine configuration. When ordering any of the Control Parts List (CPL) components listed below, please order by part description and engine serial number. Reference to the CPL number stamped on the engine data (name) plate will also help identify the proper service parts for your engine.

### Control Parts List (CPL) Components

Pump, Injection  
Camshaft  
Cylinder Head  
Injector

Page 30-31  
Page 56  
Page 59  
Page 61-63

Engine Piston  
Turbocharger  
Exhaust Manifold

Page 55  
Page 64-67  
Page 71

### USER INFORMATION

- . Parts numbers appearing in ( ) are for identification purposes only and should not be used when ordering service replacement parts.
- . The reference numbers appearing on the art pages is for publication use only.
- . Assembly content is shown by part number indentation.
- . Options are engineered production part groupings, specifically used for compiling engine orders.
- . Option numbers are for reference only and are not sold for service.
- . Use assembly and not option content to determine service parts replacement.

### ALWAYS SPECIFY ENGINE MODEL AND SERIAL NUMBER WHEN ORDERING PARTS FROM THIS CATALOG

Engine Model \_\_\_\_\_ Engine Serial No. \_\_\_\_\_

MFG Make \_\_\_\_\_ Model \_\_\_\_\_ Chassis No. \_\_\_\_\_

Fuel Pump Assembly No. \_\_\_\_\_ Injector No. \_\_\_\_\_

Belt, Fan \_\_\_\_\_ Belt, Water Pump \_\_\_\_\_ Belt, Gen. \_\_\_\_\_

Element, Fuel Filter \_\_\_\_\_ Full Flow Lub. Filter \_\_\_\_\_

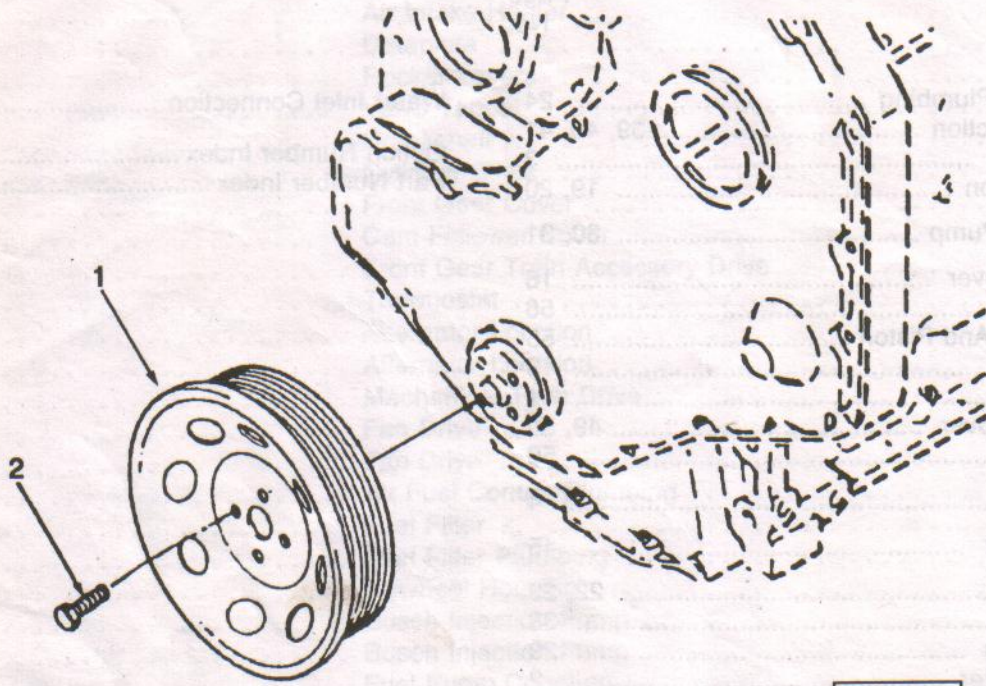
Air Cleaner \_\_\_\_\_ By-Pass Lub. Filter \_\_\_\_\_

Special Equipment \_\_\_\_\_  
\_\_\_\_\_  
\_\_\_\_\_

38  
3900

# Table of Contents

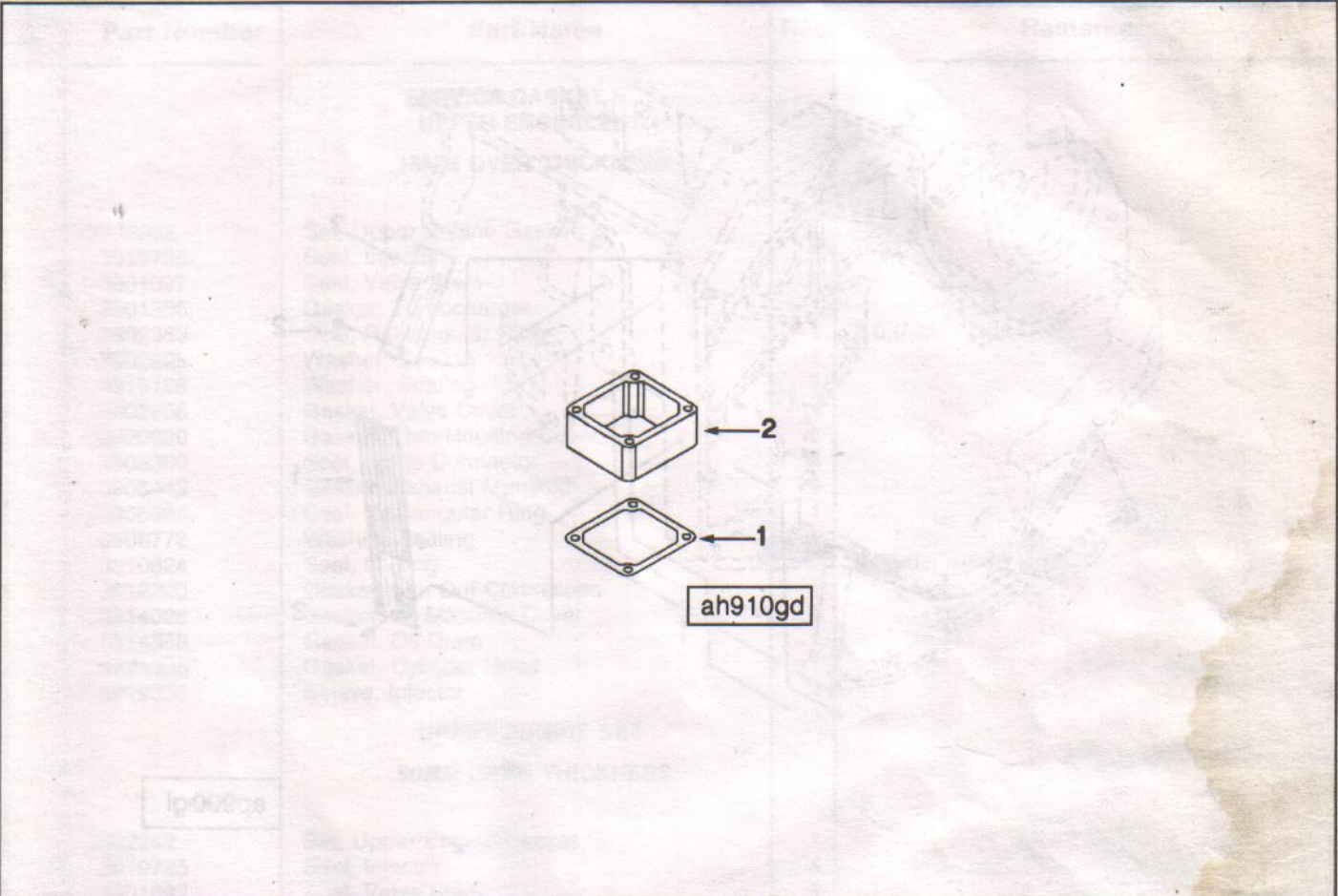
	Page No.	Page No.	
Air Fuel Control Plumbing .....	24	Water Inlet Connection .....	77, 78
Air Intake Connection .....	39, 40, 41	Option Number Index .....	A-1
Air Intake Heater .....	3	Part Number Index .....	B-1
Alternator Location .....	19, 20		
Bosch Injection Pump .....	30, 31		
Cam Follower Cover .....	16		
Camshaft .....	56		
Connecting Rod And Piston .....	55		
Crankshaft .....	13		
Cylinder Block .....	11		
Cylinder Block Cover .....	49, 50		
Cylinder Head .....	59		
Dataplate .....	4		
Engine Oil Cooler .....	45		
Fan Drive .....	22, 23		
Flywheel .....	38		
Flywheel Housing .....	29		
Front Drive Adapter .....	2		
Front Gear Cover .....	15		
Front Gear Train Accessory Drive .....	17		
Fuel Filter .....	25		
Fuel Filter Plumbing .....	26		
Fuel Injector .....	61, 63		
Fuel Pump Coupling .....	32		
Fuel System Accessories .....	33, 34		
Lifting Bracket .....	42		
Lubricating Oil Pump .....	47		
Main Bearing Kits .....	83		
Mechanical Tach Drive .....	21		
Oil Level Gauge .....	46		
Oil Pan .....	53		
Piston Kits .....	83		
Piston Ring Sets .....	83		
Plumbing, Fuel .....	37		
Pump Water .....	79		
Rocker Levers .....	7		
Service Gasket Set .....	80, 81, 82		
Service Repair Kits .....	83		
Starting Motor .....	69		
Starting Motor Mounting .....	68		
Thermostat .....	18		
Thermostat Housing .....	72		
Turbo Repair Kits .....	83		
Turbocharger .....	64, 67		
Turbocharger Location .....	71		
Turbocharger Plumbing .....	75		
Valve Cover .....	76		
Valve Tappet .....	8		



af900gk

Ref No.	Part Number	Part Name	Req	Remarks
		<b>FRONT DRIVE ADAPTER OPTION AF9006</b>		Adapter, Front Drive Cylinders: 4/6 Kit: No No. of Grooves: 8 Groove Torque Limit #FT: 210 Location From FFOB: Unknown Pulley Diameter MM: 174.00 Pulley Mounting Location: Crankshaft
1	3914494	Pulley, Crankshaft	1	
2	3903857	Screw, Hex Flange Head Cap	4	M12 x 1.25 x 36

W.  
WIS

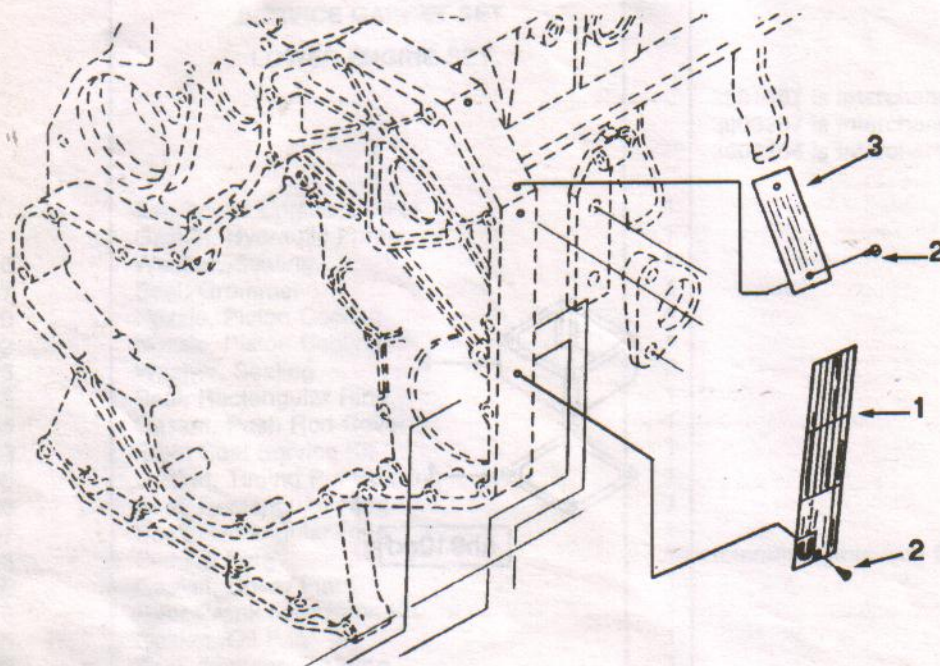


Ref No.	Part Number	Part Name	Req	Remarks
<b>AIR INTAKE HEATER OPTION AH9021</b>				
1	3913352	Gasket, Connection	1	Spacer connection for use when no grid-type engine air heater is required. For use on (4 & 6B ) charge air cooled engines.
2	3922484	Connection, Spacer	1	

Group No. 01.06.1

Dataplate

Option No. AP9056



ap900:gl

Ref No.	Part Number	Part Name	Req	Remarks
		<b>DATAPLATE OPTION AP9056</b>		
1	3919603	Dataplate	1	Certified EPA and California (ARB) dataplate for (1991 model year) engine classified as medium heavy duty diesel engines. Includes dataplate for engines manufactured for Cummins Engine Company. Located on fuel pump side of engine on the outboard edge of gear housing, orientated 90 degrees counter-clockwise from horizontal. Includes provision for tracking of emissions credits for banking and trading.
2	3908612	Screw, Drive	4	
3	3920701	Dataplate	1	
	(3916103)	Tag, Instruction	1	