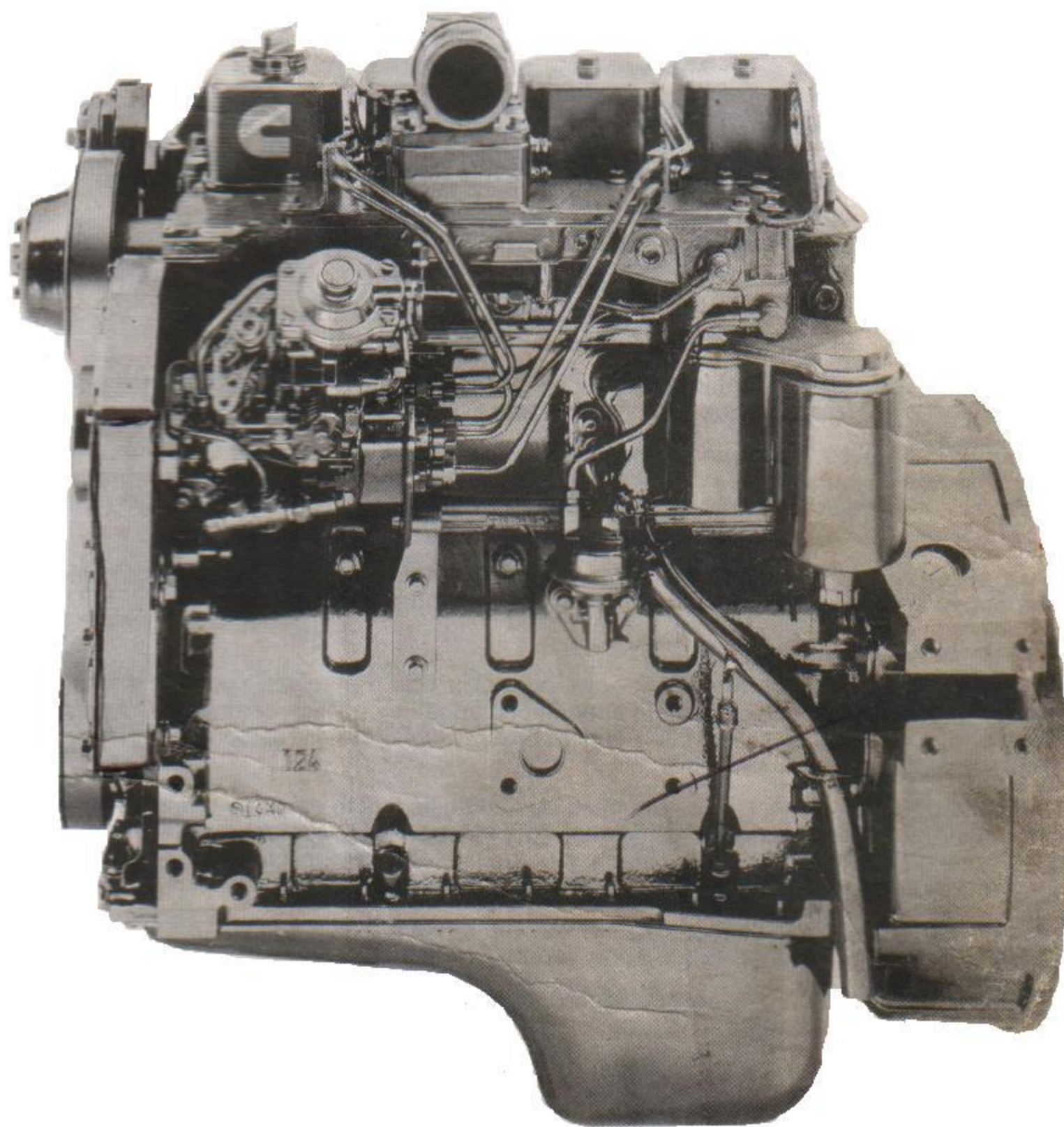




Parts Catalog

4BT3.9

Charge Air Cooled
Automotive





Cummins Engine Co., Inc.

New Parts Warranty Midrange

COVERAGE

PRODUCTS WARRANTED

This warranty applies to New Parts marketed by Cummins for its A, B, and C Series engines. It applies anywhere in the world where service is available through a Cummins distributor or A, B, and C Series dealer.*

COVERAGE

This warranty covers any failures of parts on or after December 1, 1986, which result, under normal use and service, from defects in workmanship or material (Warrantable Failures). The coverage extends six months from the date of first installation.

This warranty continues to all subsequent Owners until the end of the period of coverage.

CUMMINS RESPONSIBILITIES

Cummins will pay for all parts and labor needed to repair the damage to the engine resulting from the Warrantable Failure. All labor costs will be paid in accordance with Cummins published Standard Repair Time guidelines.

Cummins will pay for the lubricating oil, antifreeze, filter elements, and other maintenance items that are not reusable due to the Warrantable Failure.

Cummins will pay reasonable labor costs for engine removal and reinstallation when necessary to make the warranty repair.

OWNER RESPONSIBILITIES

At the time when the parts are installed, Owner is responsible for the preparation of a written record containing the following: (1) the date of installation of the parts; (2) the engine serial number; (3) the engine miles, hours or kilometers of operation; (4) the parts installed, and (5) the location of the parts in the engine. The purpose of this record is to protect Owner's interests and support any claim for a Warrantable Failure.

Owner is responsible for the operation and maintenance of the engine as specified in Cummins Operation and Maintenance Manuals.

39125 expiration of the warranty, Owner must give notice to a Cummins distributor or A, B, and C Series dealer* of a failure
39133 required to be warrantable and deliver the engine to such facility for repair.

39134 Owner is responsible for the cost of lubricating oil, antifreeze, filter elements and other maintenance items replaced during warranty
39135 repairs except where such items are not reusable due to a Warrantable Failure.

39136 Owner is responsible for communication expenses, meals, lodging and similar costs incurred by Owner as a result of a Warrantable
39137 failure. Owner is responsible for non-engine repairs and for "downtime" expenses, cargo damage and all business costs and
39138 losses resulting from a Warrantable Failure. **CUMMINS IS NOT RESPONSIBLE FOR INCIDENTAL OR CONSEQUENTIAL DAMAGES.**

(In the United States, some states do not allow the exclusion or limitation of incidental or consequential damages relating to Consumer Products, so the above limitation or exclusion may not apply to you.)

LIMITATIONS

Cummins is not responsible for failures resulting from Owner or Operator abuse or neglect, such as: operation without adequate coolant or lubricants; overfueling; overspeeding; lack of maintenance of lubricating, cooling or air intake systems; improper storage, starting, warm-up, run-in or shutdown practices. Cummins is also not responsible for failures caused by incorrect fuel, or by water, dirt or other contaminants in the fuel.

Except for fuel pumps, Cummins does not warrant parts supplied by Cummins which bear the name of another company. These parts are warranted by their manufacturers and not by Cummins. This category of parts includes, but is not limited to: hydraulic pumps, alternators, starters, fans, air conditioning compressors, clutches, filters, transmissions, torque converters, marine gears, air cleaners and non-Cummins air compressors, engine compression brakes, and steering pumps.

Parts used in warranty repairs may be new Cummins, Cummins approved rebuilt parts, or repaired parts. Cummins is not responsible for failures resulting from the use of parts not approved by Cummins.

Before a claim for excessive oil consumption will be considered, Owner must submit adequate documentation to show that consumption exceeds Cummins published standards.

This warranty does not apply to parts furnished by Cummins at no charge to the Owner.


THIS WARRANTY IS THE SOLE WARRANTY MADE BY CUMMINS IN REGARD TO THESE PARTS. CUMMINS MAKES NO OTHER WARRANTIES, EXPRESS OR IMPLIED, OR OF MERCHANTABILITY OR FITNESS FOR A PARTICULAR PURPOSE.



Product Identification Information

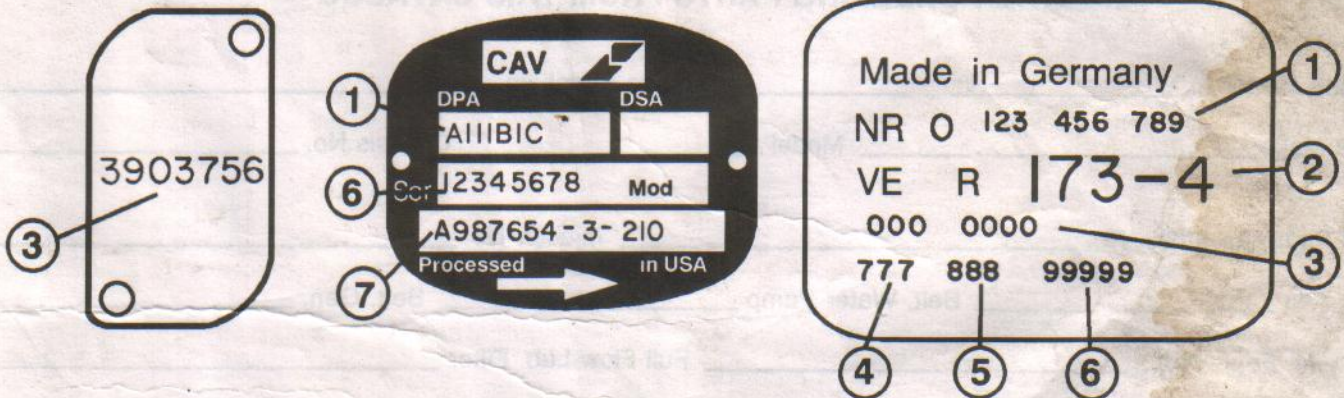
Data plates should be referred for parts identification.

1. ENGINE DATA PLATE

 Cummins Engine Company, Inc. Columbus, Indiana 47202-3005 Made in U.S.A. 3920701	Engine Cert. I.D. Certificat d'Identite'	C.I.D./L. Pouce Cube/L.	Family Famille	CPL	Model Modele	FEL	EPA	CARB	
	WARNING: Injury may result and warranty is voided if fuel rate rpm or altitudes exceed published maximum values for this model and application. AVERTISSEMENT: Danger de blessures et d'annulation de la garantie si de'bit de combustible tr/min ou altitude de'passent les valeurs maximum annonce'es pour ce modele et son utilisation.					Injector P/N Injecteur P/N	NDX		
Timing—T.D.C. Colage—P.M.H.					Engine No. Moteur No.	PM			
Valve lash cold Jeux Soup. a Froid					Int. Adm.	Exh. Ech.	Ref. No.		
Firing Order Order d'Allumage					Fuel rate at adv. HP De'bit combust. a puissance indiquee				$\frac{\text{mm}^3}{\text{stroke}}$
Date of Mfg. Date of Fabrication	Idle Speed (rpm) Vitesse Rotenti	E.C.S.		Advertised HP Puiss. Indiquee (ch)		at a	rpm		

1. Shop order number
2. Model designation
3. Engine serial number
4. Control parts list

2. FUEL PUMP DATA PLATE



1. Supplier part number
2. Supplier alpha-numerica designation
3. Cummins part number
4. Factory code
5. Manufacturing date code
6. Serial number of pump
7. Pump setting code

This catalog was compiled by Rita Wheeler in Parts Communications.

Customer Service Information

This standard Parts Catalog contains parts information for the following Cummins Engine Model(s):

4BTA

D383017BX02

CPL 986, 1260

Certain basic engine components have been matched to give optimum performance to your engine. The part numbers listed in this catalog for these components are for a standard engine configuration. When ordering any of the Control Parts List (CPL) components listed below, please order by part description and engine serial number. Reference to the CPL number stamped on the engine data (name) plate will also help identify the proper service parts for your engine.

Control Parts List (CPL) Components

Pump, Injection
Camshaft
Cylinder Head
Injector

Page 30-31
Page 56
Page 59
Page 61-63

Engine Piston
Turbocharger
Exhaust Manifold

Page 55
Page 64-67
Page 71

USER INFORMATION

- . Parts numbers appearing in () are for identification purposes only and should not be used when ordering service replacement parts.
- . The reference numbers appearing on the art pages is for publication use only.
- . Assembly content is shown by part number indentation.
- . Options are engineered production part groupings, specifically used for compiling engine orders.
- . Option numbers are for reference only and are not sold for service.
- . Use assembly and not option content to determine service parts replacement.

ALWAYS SPECIFY ENGINE MODEL AND SERIAL NUMBER WHEN ORDERING PARTS FROM THIS CATALOG

Engine Model _____ Engine Serial No. _____

MFG Make _____ Model _____ Chassis No. _____

Fuel Pump Assembly No. _____ Injector No. _____

Belt, Fan _____ Belt, Water Pump _____ Belt, Gen. _____

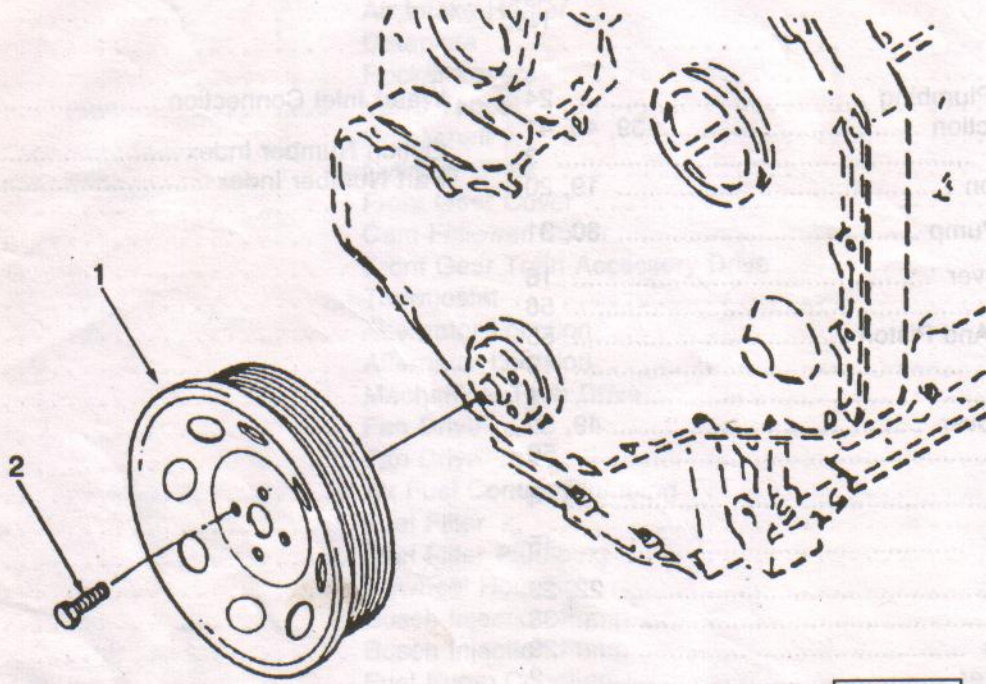
Element, Fuel Filter _____ Full Flow Lub. Filter _____

Air Cleaner _____ By-Pass Lub. Filter _____

Special Equipment

Table of Contents

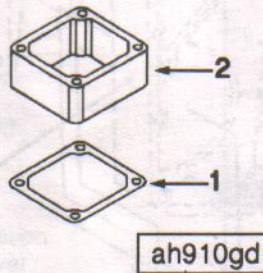
	Page No.		Page No.
Air Fuel Control Plumbing	24	Water Inlet Connection	77, 78
Air Intake Connection	39, 40, 41	Option Number Index	A-1
Air Intake Heater	3	Part Number Index	B-1
Alternator Location	19, 20		
Bosch Injection Pump	30, 31		
Cam Follower Cover	16		
Camshaft	56		
Connecting Rod And Piston	55		
Crankshaft	13		
Cylinder Block	11		
Cylinder Block Cover	49, 50		
Cylinder Head	59		
Dataplate	4		
Engine Oil Cooler	45		
Fan Drive	22, 23		
Flywheel	38		
Flywheel Housing	29		
Front Drive Adapter	2		
Front Gear Cover	15		
Front Gear Train Accessory Drive	17		
Fuel Filter	25		
Fuel Filter Plumbing	26		
Fuel Injector	61, 63		
Fuel Pump Coupling	32		
Fuel System Accessories	33, 34		
Lifting Bracket	42		
Lubricating Oil Pump	47		
Main Bearing Kits	83		
Mechanical Tach Drive	21		
Oil Level Gauge	46		
Oil Pan	53		
Piston Kits	83		
Piston Ring Sets	83		
Plumbing, Fuel	37		
Pump Water	79		
Rocker Levers	7		
Service Gasket Set	80, 81, 82		
Service Repair Kits	83		
Starting Motor	69		
Starting Motor Mounting	68		
Thermostat	18		
Thermostat Housing	72		
Turbo Repair Kits	83		
Turbocharger	64, 67		
Turbocharger Location	71		
Turbocharger Plumbing	75		
Valve Cover	76		
Valve Tappet	8		



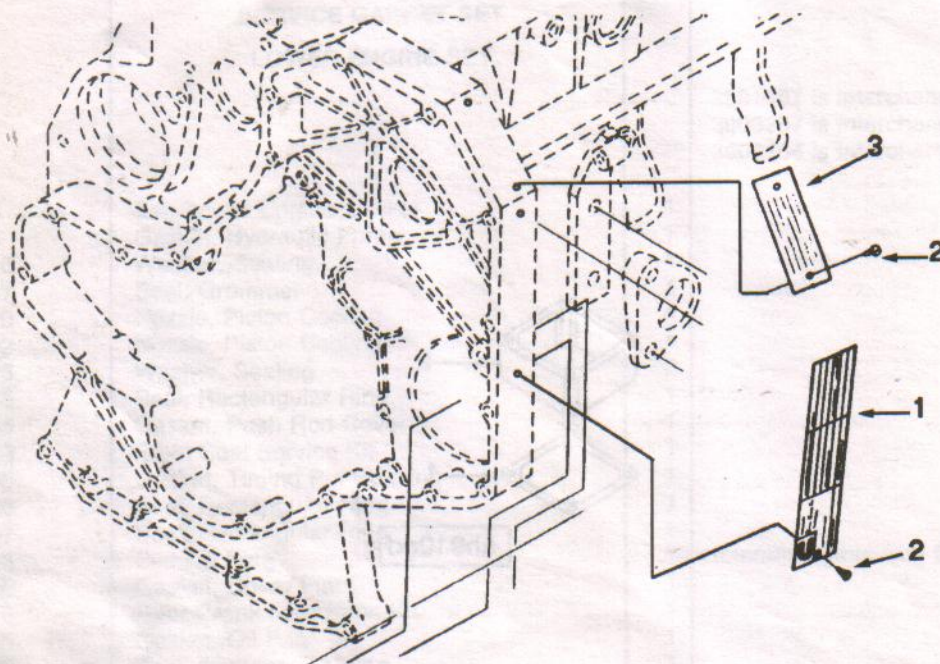
af900gk

Ref No.	Part Number	Part Name	Req	Remarks
		FRONT DRIVE ADAPTER OPTION AF9006		Adapter, Front Drive Cylinders: 4/6 Kit: No No. of Grooves: 8 Groove Torque Limit #FT: 210 Location From FFOB: Unknown Pulley Diameter MM: 174.00 Pulley Mounting Location: Crankshaft
1	3914494	Pulley, Crankshaft	1	
2	3903857	Screw, Hex Flange Head Cap	4	M12 x 1.25 x 36

W.
WIS



Ref No.	Part Number	Part Name	Req	Remarks
AIR INTAKE HEATER				
OPTION AH9021				
1	3913352	Gasket, Connection	1	Spacer connection for use when no grid-type engine air heater is required. For use on (4 & 6B) charge air cooled engines.
2	3922484	Connection, Spacer	1	



ap900:gl

Ref No.	Part Number	Part Name	Req	Remarks
		DATAPLATE OPTION AP9056		Certified EPA and California (ARB) dataplate for (1991 model year) engine classified as medium heavy duty diesel engines. Includes dataplate for engines manufactured for Cummins Engine Company. Located on fuel pump side of engine on the outboard edge of gear housing, orientated 90 degrees counter-clockwise from horizontal. Includes provision for tracking of emissions credits for banking and trading.
1	3919603	Dataplate	1	
2	3908612	Screw, Drive	4	
3	3920701	Dataplate	1	
	(3916103)	Tag, Instruction	1	