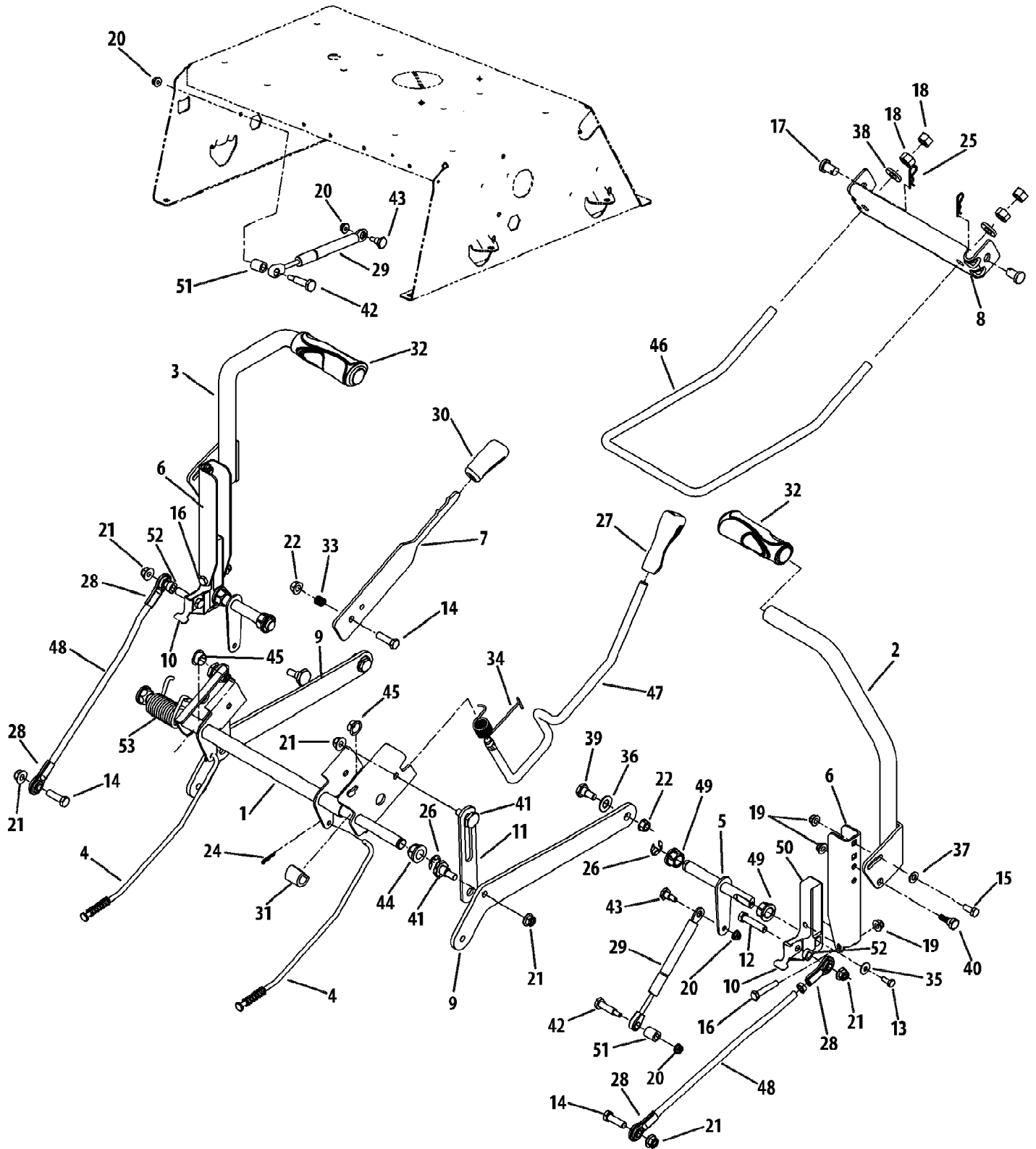


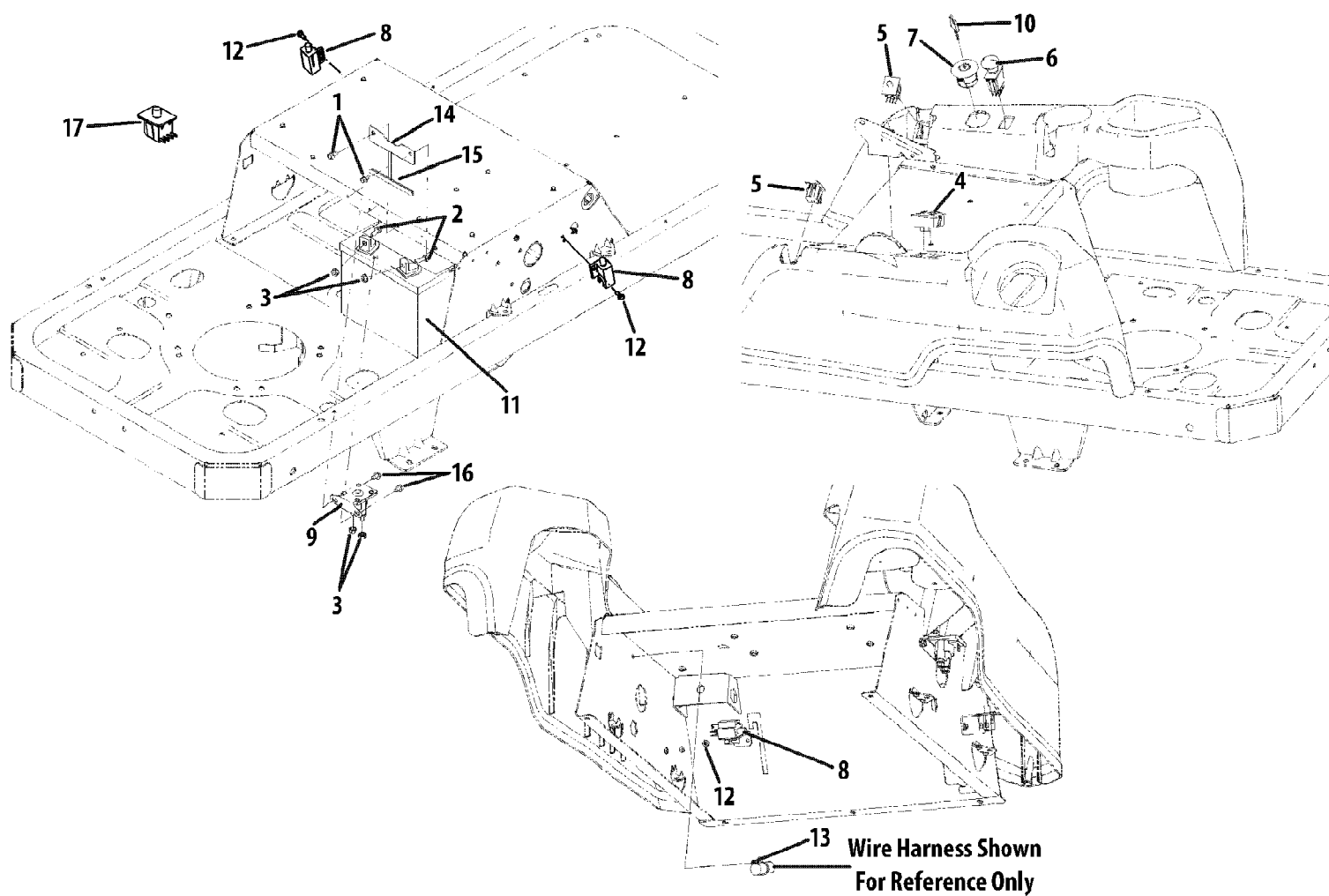
RZT50 Kawasaki 17AI2ACP (2010 & After)
Deck Lift & Controls



RZT50 Kawasaki 17A12ACP (2010 & After)
Deck Lift & Controls

Page 2 of 53

Ref #	Part Number	Qty	S/P/F	Description
1	603-04160B-0637	1	/P	Deck Lift Shaft Assembly
2	603-04322-0637	1		Lapbar Lever RH
3	603-04324-0637	1		Lapbar Lever LH
4	747-04651	1		Brake Rod
5	647-04099A	1	/P	Control Shaft
6	703-05387B	1	/P	Lapbar Pivot Bracket
7	703-05396A-0637	1	/P	Brake Handle
8	703-05414A-4021	1		Front Deck Hanger Bracket
9	703-05793A-4021	1		Deck Lift Arm
10	703-06096A	1		Switch Actuator Bracket
11	703-06169-0637	1	/P	Lift Link Plate
12	710-0347	1	/P	Hex Screw, 3/8-16 x 1.75
13	710-0433	1	/P	Hex Lock Screw, 1/4-20 x .62
14	710-3005	1	/P	Hex Cap Screw, 3/8-16 x 1.25
15	710-3008	1	/P	Hex Cap Screw, 5/16-18 x .75
16	710-3180	1	/P	Hex Cap Screw, 5/16-18 x 1.75
17	911-0332	1	/P	Clevis Pin, .50 x .78
18	912-0206	1	/P	Hex Nut, 1/2-13
19	712-04063	1	/P	Hex Flange Insert Lock Nut, 5/16-18
20	712-04064	1	/P	Hex Flange Insert Lock Nut, 1/4-20
21	712-04065	1	/P	Hex Flange Insert Lock Nut, 3/8-16
22	912-0431	1	/P	Hex Flange Lock Nut, 3/8-16
23	912-3001	1	/P	Jam Nut, 3/8-24
24	714-04040	1	/P	Bow-Tie Cotter Pin
25	914-04023	1	/P	Cotter Pin
26	716-0106	1	/P	E-Ring, .625 Dia.
27	720-0311	1		Handle Grip
28	723-04035	1		Rod End
29	727-04141	1		Damper Cylinder
30	731-04735	1		Handle Grip
31	731-05732	1		Spacer, .62 x 1.0
32	731-05882	1		Hand Grip
33	932-0334	1	/P	Compression Spring
34	732-0874	1	/P	Torsion Spring
35	736-0270	1	/P	Bell Washer, .265 x .75 x .062
36	736-0272	1	S	Flat Washer, .51 x 1.0 x .06
37	936-0275	1	/P	Flat Washer, .344 x .688 x .065
38	736-3019	1		Flat Washer, .531 x 1.062 x .134
39	738-0143	1	/P	Shoulder Screw, .498 x .340 x 3/8-16
40	938-0296	1	/P	Shoulder Screw, .437 x .268 x 5/16-18
41	938-0507B	1	/P	Shoulder Screw, .5 x .434 x 3/8-16
42	938-0572	1	/P	Shoulder Screw, .374 x 1.16 x 1/4-20
43	938-0974	1	/P	Shoulder Screw, .375 x .38 x 1/4-20
44	941-0225	1	/P	Hex Flange Bearing
45	741-3074	1		Flange Bearing, .626 x .938 x .344
46	747-04401A	1		Deck Front Hanger Rod
47	747-04637	1		Deck Lift Handle Rod
48	747-05057	1		Lapbar Control Rod
49	948-0227A	1	/P	Hex Flange Bearing
50	748-04169A	1		Control Hub
51	750-04676	1		Spacer, .385 x .630 x .75
52	750-04776	1		Spacer, .380 x .625 x .265
53	732-04420	1		Torsion Spring



Ref #	Part Number	Qty	S/P/F	Description
1	710-0599	1	/P	Hex Screw, 1/4-20 x .5
2	710-3015	1	/P	Hex Screw, 1/4-20 x .75
3	712-0271	1	/P	Hex Nut, 1/4-20
4	925-04022B	1	/P	Hour Meter
5	925-04165	1	/P	Double Pole - Neutral Switch
6	925-04174	1	/P	PTO Switch
7	925-04228	1	/P	Ignition Switch
8	725-04363	1		Interlock Switch
9	725-04439	1		Solenoid
10	925-1745A	1	/P	Key
11	925-1707D	1	/P	Battery, 235 CCA
12	738-04237A	1		Shoulder Screw, #10-32 x .500
13	726-0470	1		Cable Tie
14	703-05894-0637	1	/P	Battery Hold-down
15	731-0511	1	/P	Trim Strip
16	710-0653	1	/P	Hex Screw, 1/4-20 x .375
17	925-04040	1	/P	Seat Switch

RZT50 Kawasaki 17AI2ACP (2010 & After)
Electrical Schematic

