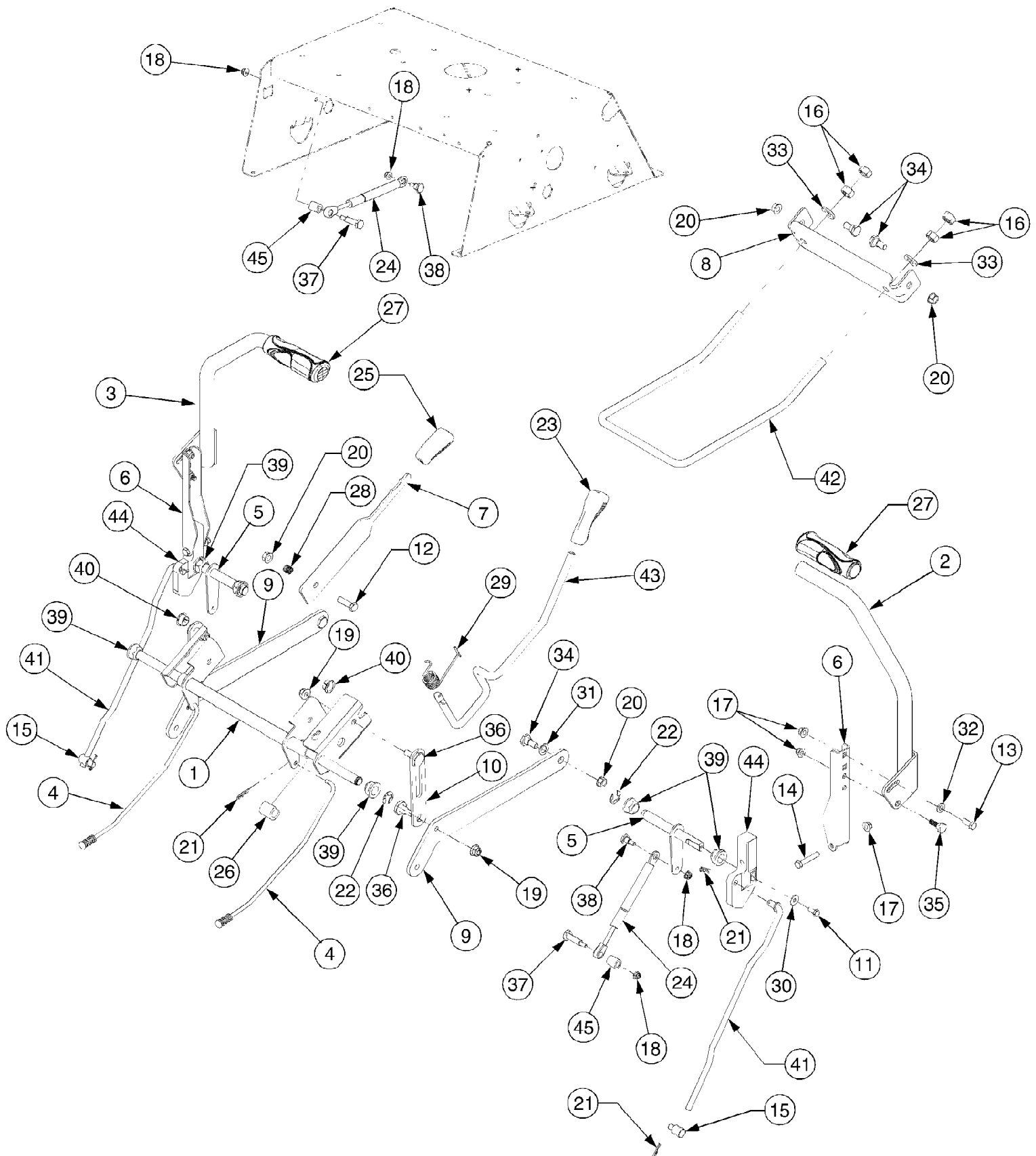


RZT42 Kohler 17AE2ACG (2007)
Air Intake Filtration

Page 2 of 40

Ref #	Part Number	Qty	S/P/F	Description
1	KH-20-096-04-S	1		Cover, air cleaner
2	KH-25-341-05-S	2		Knob, cover
3	KH-20-083-03-S	1	S	Element, precleaner
4	KH-20-083-02-S	1	S	Element, air cleaner
5	KH-20-094-01-S	1	S	Kit, air cleaner base (Includes 6)
6	KH-12-041-02	1	/P	Gasket, air cleaner base



RZT42 Kohler 17AE2ACG (2007)
Controls and Deck Lift

Ref #	Part Number	Qty	S/P/F	Description
1	603-04160B	1	S	Shaft Assembly, Deck Lift
2	603-04322	1		Lever, Lapbar, RH
3	603-04324	1		Lever, Lapbar, LH
4	947-04065	2	/P	Rod, Brake
5	647-04099	2	S	Shaft, Control
6	703-05387A	2	S	Bracket, Lapbar Pivot
7	703-05396	1	S	Handle, Brake
8	703-05414A	1		Bracket, Front Deck Hanger
9	703-05793A	2		Arm, Deck Lift
10	703-05907	2		Plate, Lift Link
11	710-0433	2	/P	Screw, Hex Lock, 1/4-20 x .62 GR5
12	710-3005	1	/P	Screw, Hex Cap, 3/8-16 x 1.25 GR5 ...
13	710-3008	2	/P	Screw, Hex Cap, 5/16-18 x .75 GR5 ...
14	710-3180	2	/P	Screw, Hex Cap, 5/16-18 x 1.75 GR5
15	711-0832	2	S	Ferrule, 3/8-24 x .375
16	712-0206	4	S	Nut, Hex, 1/2-13 GR5
17	712-04063	6	/P	Nut, Hx Flange Insert Lck, 5/16-18 GrF
18	712-04064	4	/P	Nut, Hx Flange Insert Lck, 1/4-20 GrF
19	712-04065	4	/P	Nut, Hx Flange Insert Lck, 3/8-16GrF
20	712-0431	5	S	Nut, Hex Flange Lock, 3/8-16 GRF
21	714-0104	6	S	Pin, Internal Cotter
22	716-0106	4	/P	E-Ring , .625 Dia. Shaft
23	720-0311	1		Grip, Handle
24	727-04141	2		Cylinder, Damper
25	731-04735	1		Grip, Handle
26	731-05732	1		Spacer, .62 x 1.0
27	731-05882	2		Grip, Hand
28	732-0334	1	S	Spring, Compression
29	732-04422	1	S	Spring, Torsion
30	736-0270	2	/P	Washer, Bell, .265 x .75 x .062
31	736-0272	2	S	Washer, Flat, .51 x 1.0 x .06
32	736-0275	2	S	Washer, Flat, .344 x .688 x .065
33	736-3019	2		Washer, Flat, .531 x 1.062 x .134 HT ..
34	738-0143	4	/P	Screw, Shoulder, .498 x .340:3/8-16
35	738-0296	2	S	Screw, Shoulder, .437 x .268:5/16-18
36	738-0507B	4	S	Screw, Shoulder, .5 x .434:3/8-16
37	738-0572	2	S	Screw, Shoulder, .374 x 1.16:1/4-20 ...
38	738-0974	2	S	Screw, Shoulder, .375 x .38:1/4-20
39	741-0225	6	S	Bearing, Hex Flange
40	741-3074	2		Bearing, Flange, .626 x .938 x .344
41	747-04225A	2	/P	Rod, Lapbar Control
42	747-04401A	1		Rod, Deck Front Hanger
43	747-04637	1		Rod, Deck Lift Handle
44	748-04052	2		Hub, Control
45	750-04676	2		Spacer, .385 x .63 x .75